

SCALE: 1" = 2000'
0' 1000' 2000'



NOTES:
1. THERE ARE NO KNOWN FLOWLINES WITHIN THE DEPICTED 2000' BUFFER ZONE PER COGCC AT THE TIME OF THIS SURVEY.

LEGEND

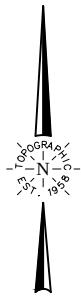
- SECTION LINE
- QUARTER SECTION LINE
- RANGE/TOWNSHIP LINE
- PARCEL LINE
- ROAD WAY
- EXISTING GAS/OIL FACILITY
- OIL / GAS WELL

VERDAD RESOURCES
PEANUT FED 3403

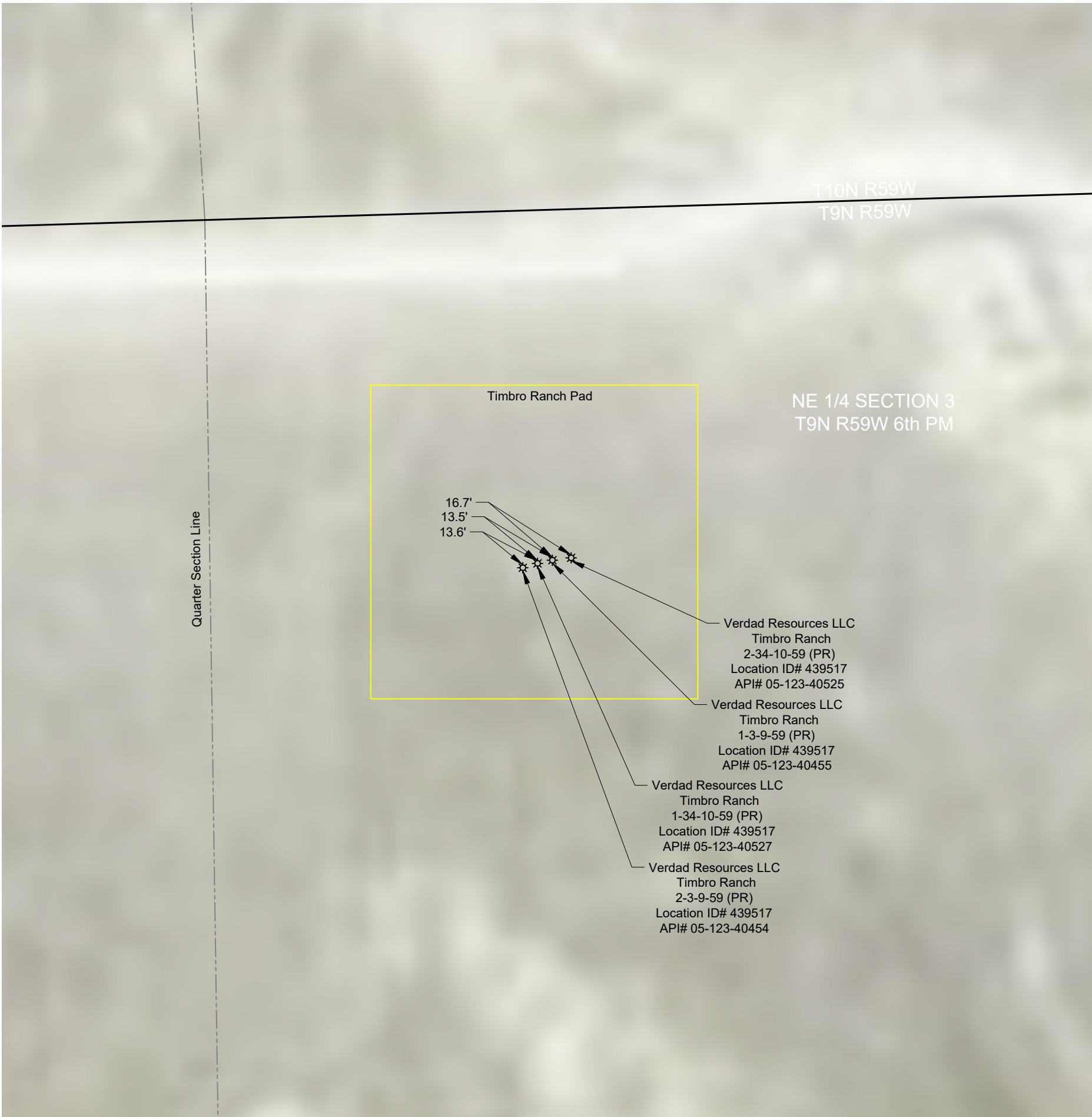
FIELD	10/29/2020	DRAFT	SW
REV 2	06/25/2021	CHECK	ZAK
SHEET : 1 OF 2		JOB: 134783	



RELATED LOCATION & FLOWLINE MAP
T10N, R59W 6TH P.M.
T9N, R59W 6TH P.M.
WELD COUNTY, COLORADO



SCALE: 1" = 100'



LEGEND

- SECTION LINE
- QUARTER SECTION LINE
- RANGE/TOWNSHIP LINE
- PARCEL LINE
- ROAD WAY
- EXISTING GAS/OIL FACILITY
- OIL / GAS WELL

VERDAD RESOURCES
PEANUT FED 3403

FIELD	10/29/2020	DRAFT	SW
REV 2	06/25/2021	CHECK	ZAK
SHEET :	2 OF 2	JOB:	134783



RELATED LOCATION &
FLOWLINE MAP
T10N, R59W 6TH P.M.
T9N, R59W 6TH P.M.
WELD COUNTY, COLORADO