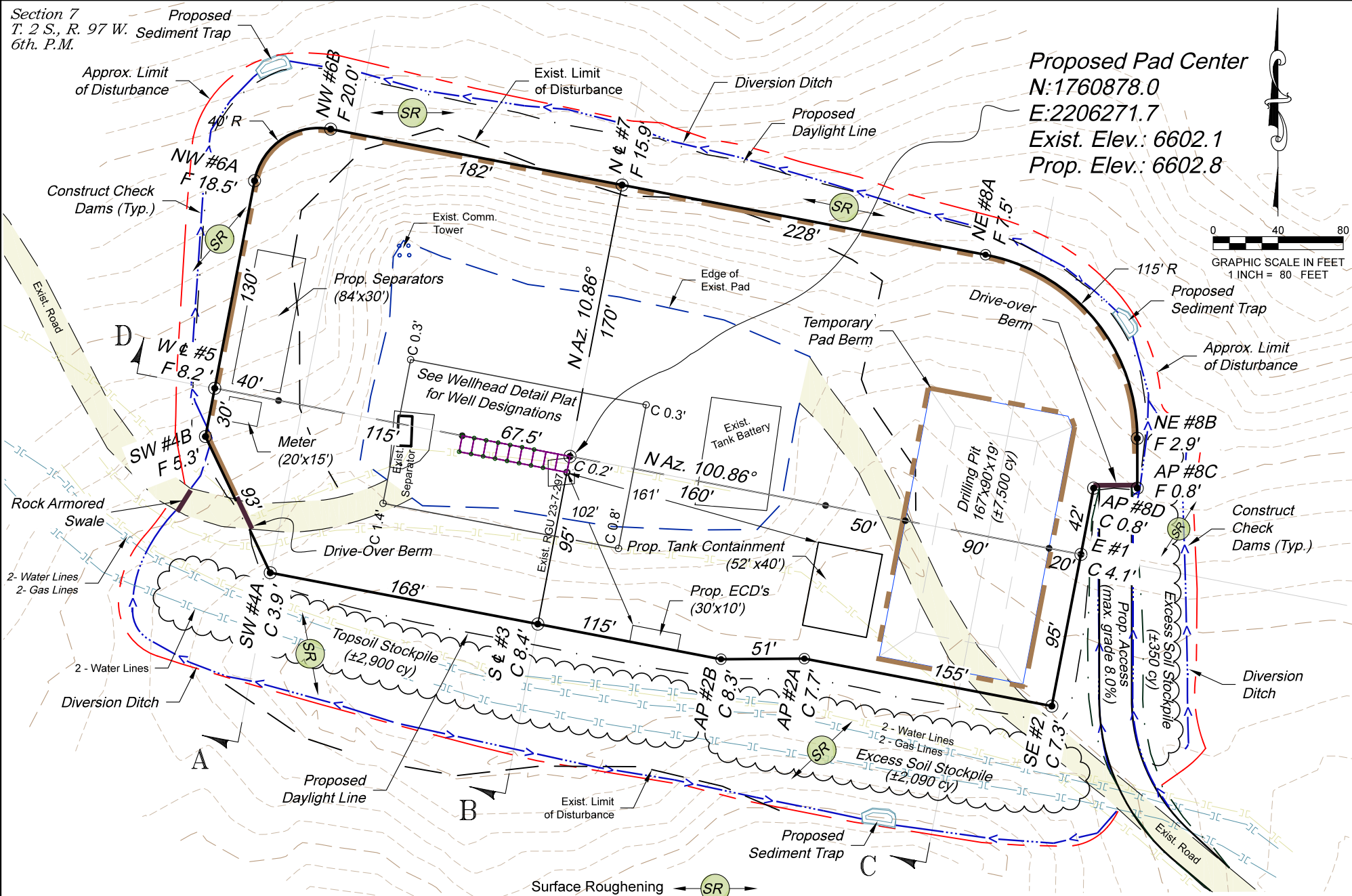
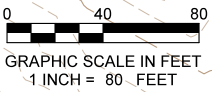


Section 7
T. 2 S., R. 97 W. Sediment Trap
6th. P.M.

Proposed Pad Center
N:1760878.0
E:2206271.7
Exist. Elev.: 6602.1
Prop. Elev.: 6602.8



Surface Roughening (SR)

REVISED: 11/10/20
SCALE: 1" = 80'
DATE: 9/06/19
SHEET: 2 of 7
PROJECT: Highlands
DFT: cs

1236 East Third Street
Rifle, Colorado 81650
Ph. (970) 625-1333
Fax (970) 625-2773

BOOKCLIFF
Survey Services, Inc.

Construction Plan Prepared for:

TEP Rocky Mountain LLC

RGU 23-7-297 Pad - Plat 2
CONSTRUCTION LAYOUT