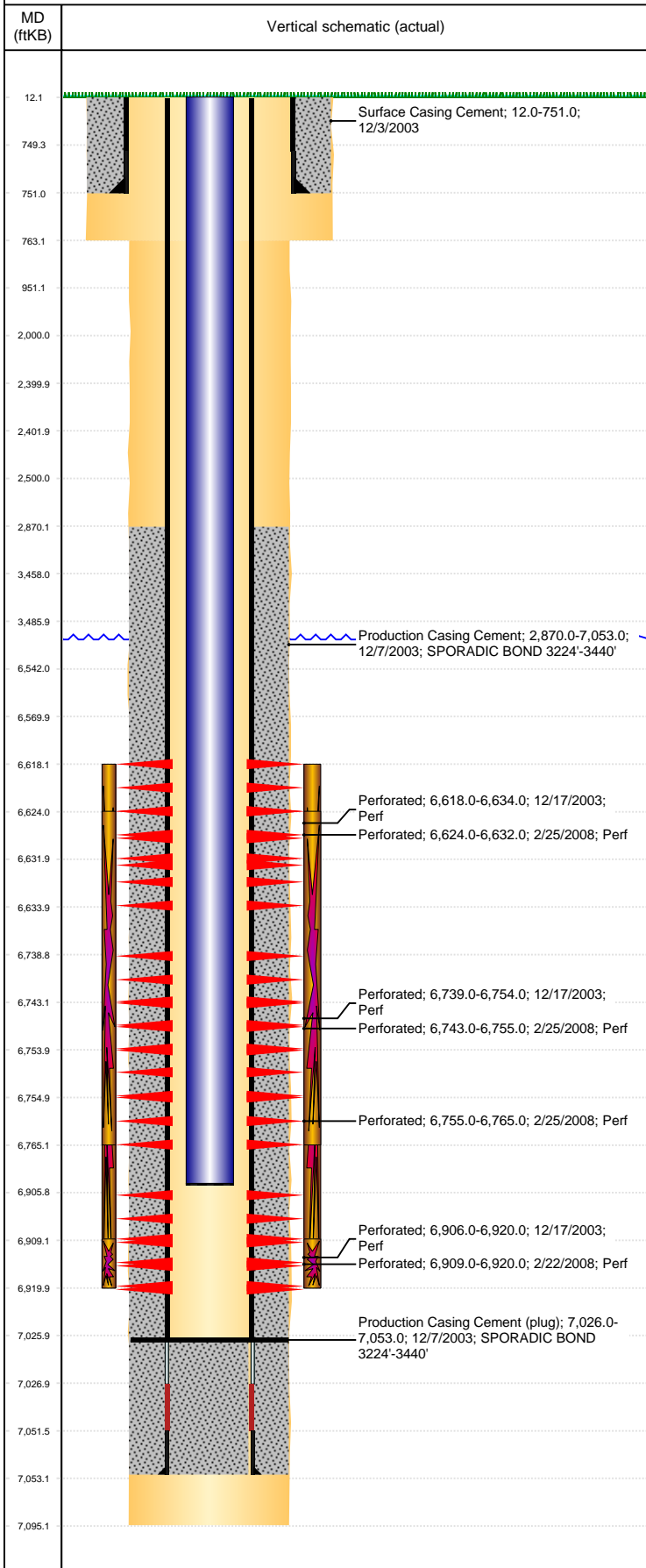


Well Name: UHRICH 14-29

VERTICAL, ORIGINAL HOLE, 11/10/2021 11:52:38 AM



Well Header									
API 05-123-21811		Business Unit DJ BASIN			District 15		Well Config VERTICAL		
KB - GL / MSL (ft... 12.00		Spud Date 12/2/2003		P & A Date		Well Production Status PR			SoRT No
Comment									
Surface Location (Congressional)									
Qtr 3 SE	Qtr 4 SW	Section 29	Twnshp 6	Twnsh... N	Range 64	Rng E/... W	Actual Latitude (°) 40.45114200	Actual Longitude (°) -104.57611400	
Wellbore Sections									
Section Des			Size (in)			Act Top, MD (ftKB)		Act Btm, MD (ftKB)	
SURFACE			12 1/4			12		763	
PRODUCTION			7 7/8			763		7,095	
Casing Strings									
Csg Des			Run Date	OD (in)	Wt/Len (lb/ft)	Grade	Top, MD (ftKB)	MD (ftKB)	
Surface			12/3/2003	8 5/8	24.00	J-55	12.0	751.0	
Production			12/6/2003	4 1/2	11.60	I-80	12.0	7,053.0	
Cement									
Des					Start Date		Top (ftKB)		Btm (ftKB)
Surface Casing Cement					12/3/2003		12.0		751.0
Production Casing Cement					12/7/2003		2,870.0		7,053.0
Zone Statuses									
Zone Name		Status Date	Status	Fluid Type	Job			Prod Method	
NIOBRARA		4/3/2008	PR	Water	RE-FRAC, 2/19/2008 00:00			Flowing Flowing	
NIOBRARA		4/25/2014	PR						
CODELL		4/25/2014	PR						
CODELL		1/1/2016	PR						
Perforation Data									
Linked Zone			Bnch/Stg	Entered Shot Total	Top (ftKB)		Btm (ftKB)		Date
NIOBRARA, ORIGINAL HOLE			A	4	6,618.00		6,634.00		12/17/2003
NIOBRARA, ORIGINAL HOLE			A	16	6,624.00		6,632.00		2/25/2008
NIOBRARA, ORIGINAL HOLE			B	1	6,739.00		6,754.00		12/17/2003
NIOBRARA, ORIGINAL HOLE			B	24	6,743.00		6,755.00		2/25/2008
NIOBRARA, ORIGINAL HOLE			C	30	6,755.00		6,765.00		2/25/2008
CODELL, ORIGINAL HOLE				28	6,906.00		6,920.00		12/17/2003
CODELL, ORIGINAL HOLE				33	6,909.00		6,920.00		2/22/2008
Stimulation Intervals									
Zone				Start Date		Top (ftKB)		Btm (ftKB)	
NIOBRARA-CODELL, ORIGINAL HOLE				12/18/2003		6,618.0		6,920.0	
NIOBRARA, ORIGINAL HOLE				2/25/2008		6,624.0		6,765.0	
CODELL, ORIGINAL HOLE				2/25/2008		6,909.0		6,920.0	
Other In Hole									
Run Date	Des				Make	OD (in)	Top (ftKB)	Btm (ftKB)	
Logs									
Date		Type				Top, MD (ftKB)		Btm, MD (ftKB)	
12/6/2003		COMPENSATED DENSITY				3,500.0		7,044.0	
12/6/2003		INDUCTION				751.0		7,064.0	
12/17/2003		CBL/CCL/GR				2,700.0		7,004.0	
12/12/2017		GYRO				11.0		6,800.0	
Plug Back Total Depths									
Date		Type		Com				Depth (ftKB)	
12/22/2003		FILL		CLEAN OUT				7,026.0	
3/31/2008		FILL		MOST RECENT REPORTED CLEAN OUT				7,026.0	