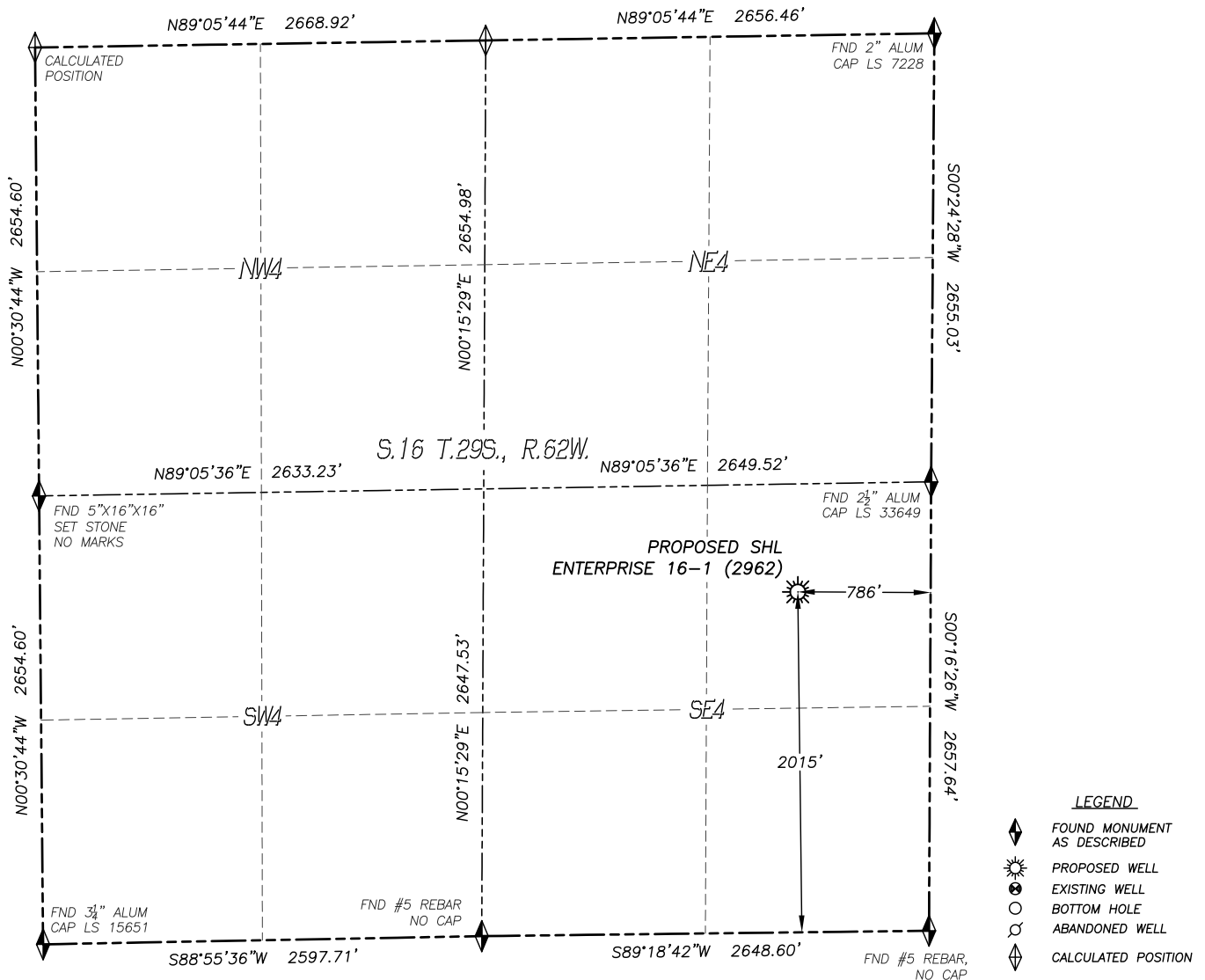


WELL LOCATION CERTIFICATE

ENTERPRISE STATE 16-1 (2962)

SECTION 16, TOWNSHIP 29 SOUTH, RANGE 62 WEST OF THE 6TH P.M.

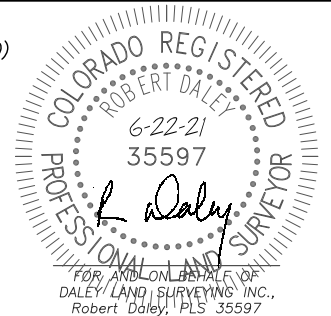


IN ACCORDANCE WITH A REQUEST FROM BNL (Enterprise) Inc., DALEY LAND SURVEYING, INC. HAS DETERMINED THE SURFACE LOCATION OF THE ENTERPRISE 16-1 (2962) WELL TO BE 2015' FSL, 786' FEL, AS MEASURED AT NINETY (90) DEGREES FROM THE SECTION LINES OF SECTION 16, TOWNSHIP 29 SOUTH, RANGE 62 WEST, OF THE 6TH PRINCIPAL MERIDIAN, LAS ANIMAS COUNTY, COLORADO.

I HEREBY STATE THAT THIS WELL LOCATION CERTIFICATE WAS PREPARED BY ME OR UNDER MY DIRECT SUPERVISION, THAT THE WORK WAS COMPLETED ON 6/10/2021 FOR AND ON BEHALF OF BNL (Enterprise) Inc., AND THAT THIS MAP DOES NOT REPRESENT A BOUNDARY SURVEY, IT IS NOT A LAND SURVEY PLAT OR AN IMPROVEMENT SURVEY PLAT AND IT IS NOT TO BE RELIED UPON FOR THE ESTABLISHMENT OF FENCE, BUILDING OR OTHER FUTURE IMPROVEMENT LINES.

NOTES:

1. BEARINGS FOR THIS MAP ARE ASSUMED AND BASED UPON GPS OBSERVATIONS MADE BETWEEN MONUMENTS LOCATED AT THE EAST QUARTER CORNER AND SOUTHEAST CORNER OF SECTION 16, T.29S., R.62W.
2. HORIZONTAL DATUM IS NAD83.
3. VERTICAL DATUM IS NAVD88 AND ORIGINATES FROM THE LOCAL C.O.R.S. NETWORK, UTILIZING THE GEOID12A MODEL.
4. SEE LOCATION DRAWING FOR VISIBLE IMPROVEMENTS WITHIN 500' OF PROPOSED DISTURBED AREA.
5. SURFACE USE: RANGELAND.
6. INST. OPERATOR: KYLE DALEY



NEAREST CULTURAL ITEMS:

BUILDING:	1644'± SE
BUILDING UNIT:	2153'± S
HIGH OCC. BLD. UNIT:	5280'+
DES. OUTSIDE ACTIVITY AREA:	5280'+
PUBLIC ROAD:	3867'± SW
ABOVE GROUND UTILITY:	3497'± SW
RAILROAD:	5280'+
PROPERTY LINE:	786'± E
SCHOOL FACILITY:	5280'+
SCHOOL PROPERTY LINE:	5280'+
CHILDCARE FACILITY:	5280'+

NAD 83 LATITUDE AND LONGITUDE

SURFACE LOCATION:

LATITUDE: N37.51829°
LONGITUDE: W104.33747°
ELEV.: 5753'
PDOP.: 1.3
QTR/QTR: NE4/SE4

