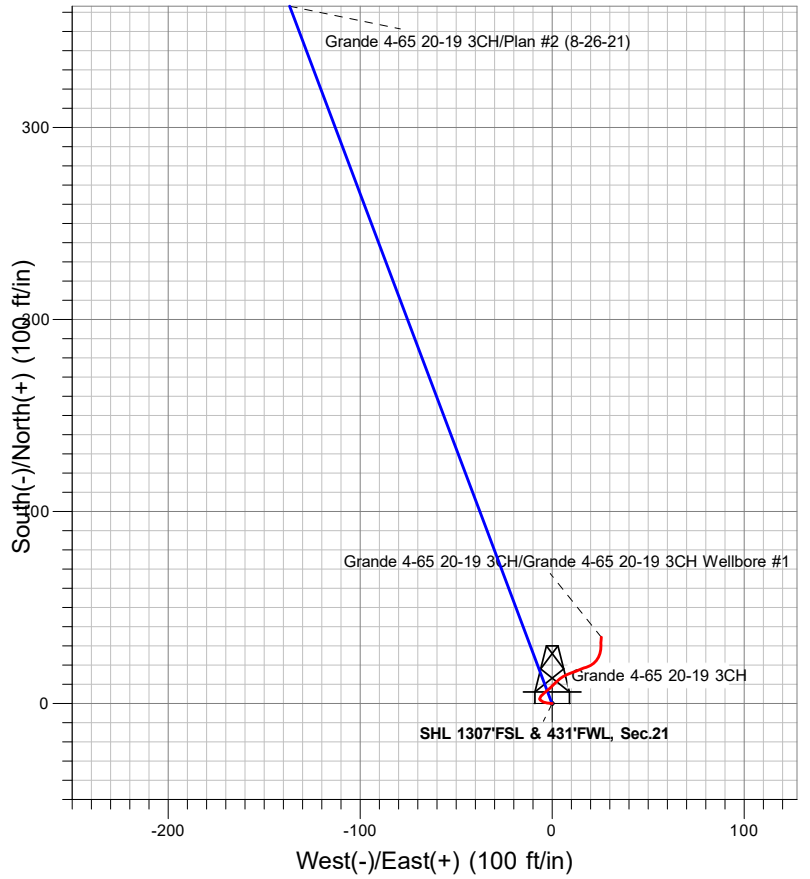


## Crestone Peak Resources

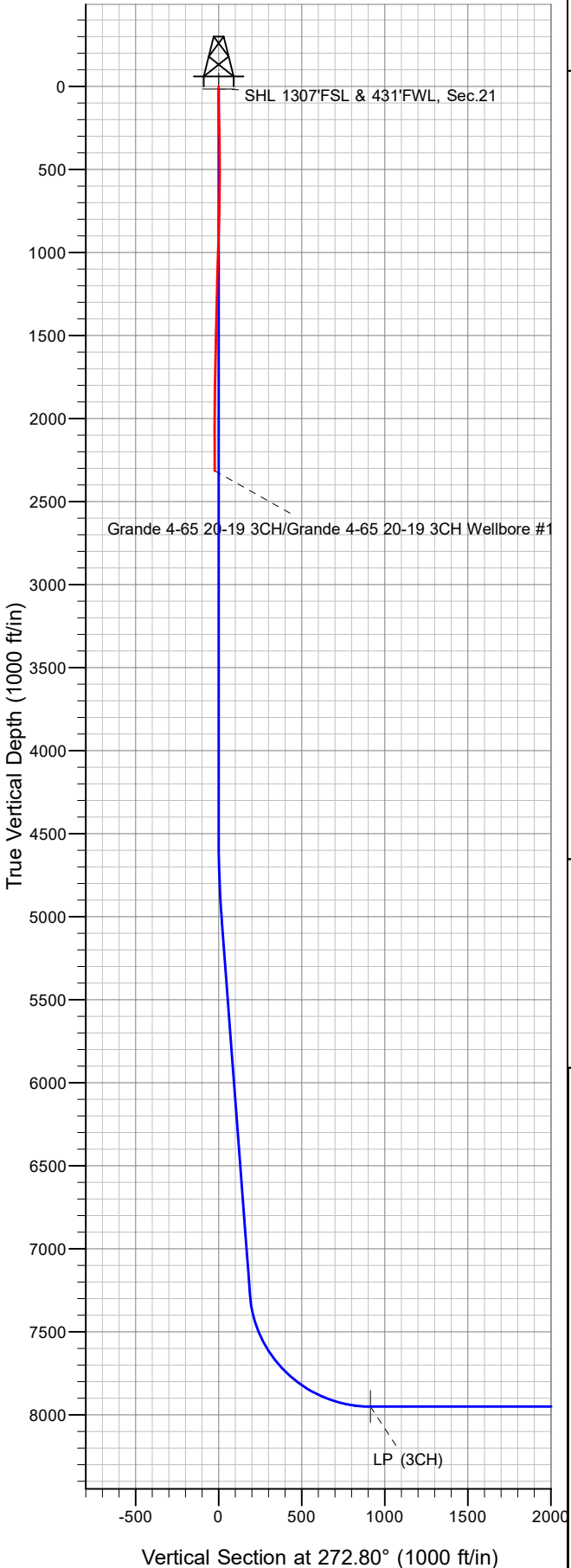


### LEGEND

- + Grande 4-65 20-19 3CH, Grande 4-65 20-19 3CH Wellbore #1, Plan #2 (8-26-21) V0
- + Grande 4-65 20-19 3CH Wellbore #1

# Final Survey Plot

Project: SEC.21-T4S-R65W  
 Site: Grande 6-65 20-19 3AH South Pad Sec.21-T4S-R65W  
 Well: Grande 4-65 20-19 3CH  
 Plan: Grande 4-65 20-19 3CH Wellbore #1





## **Crestone Peak Resources**

**SEC.21-T4S-R65W**

**Grande 6-65 20-19 3AH South Pad Sec.21-T4S-R65W**

**Grande 4-65 20-19 3CH**

**Grande 4-65 20-19 3CH Wellbore #1**

**Design: Grande 4-65 20-19 3CH Wellbore #1**

## **Standard Survey Report**

**15 September, 2021**

<b>Company:</b>	Crestone Peak Resources	<b>Local Co-ordinate Reference:</b>	Well Grande 4-65 20-19 3CH
<b>Project:</b>	SEC.21-T4S-R65W	<b>TVD Reference:</b>	WELL @ 5647.2ft (Original Well Elev)
<b>Site:</b>	Grande 6-65 20-19 3AH South Pad Sec.21-T4S-R65W	<b>MD Reference:</b>	WELL @ 5647.2ft (Original Well Elev)
<b>Well:</b>	Grande 4-65 20-19 3CH	<b>North Reference:</b>	True
<b>Wellbore:</b>	Grande 4-65 20-19 3CH Wellbore #1	<b>Survey Calculation Method:</b>	Minimum Curvature
<b>Design:</b>	Grande 4-65 20-19 3CH Wellbore #1	<b>Database:</b>	US_EDM

<b>Project</b>	SEC.21-T4S-R65W, Arapahoe County, CO		
<b>Map System:</b>	US State Plane 1983	<b>System Datum:</b>	Mean Sea Level
<b>Geo Datum:</b>	North American Datum 1983		
<b>Map Zone:</b>	Colorado Central Zone		

<b>Site</b>	Grande 6-65 20-19 3AH South Pad Sec.21-T4S-R65W				
<b>Site Position:</b>		<b>Northing:</b>	1,675,743.72 usft	<b>Latitude:</b>	39.685835
<b>From:</b>	Lat/Long	<b>Easting:</b>	3,231,646.73 usft	<b>Longitude:</b>	-104.676910
<b>Position Uncertainty:</b>	0.0 ft	<b>Slot Radius:</b>	13-3/16 "	<b>Grid Convergence:</b>	0.52 °

<b>Well</b>	Grande 4-65 20-19 3CH					
<b>Well Position</b>	<b>+N/-S</b>	0.0 ft	<b>Northing:</b>	1,675,668.68 usft	<b>Latitude:</b>	39.685629
	<b>+E/-W</b>	0.0 ft	<b>Easting:</b>	3,231,647.41 usft	<b>Longitude:</b>	-104.676910
<b>Position Uncertainty</b>		0.0 ft	<b>Wellhead Elevation:</b>	ft	<b>Ground Level:</b>	5,619.2 ft

<b>Wellbore</b>	Grande 4-65 20-19 3CH Wellbore #1				
<b>Magnetics</b>	<b>Model Name</b>	<b>Sample Date</b>	<b>Declination (°)</b>	<b>Dip Angle (°)</b>	<b>Field Strength (nT)</b>
	HRGM	08/27/2021	8.40	66.30	51,408.45566633

<b>Design</b>	Grande 4-65 20-19 3CH Wellbore #1				
<b>Audit Notes:</b>					
<b>Version:</b>	1.0	<b>Phase:</b>	ACTUAL	<b>Tie On Depth:</b>	0.0
<b>Vertical Section:</b>	<b>Depth From (TVD) (ft)</b>	<b>+N/-S (ft)</b>	<b>+E/-W (ft)</b>	<b>Direction (°)</b>	
	0.0	0.0	0.0	272.80	

<b>Survey Program</b>	<b>Date</b>	09/15/2021			
<b>From (ft)</b>	<b>To (ft)</b>	<b>Survey (Wellbore)</b>	<b>Tool Name</b>	<b>Description</b>	
115.0	2,315.0	Survey #1 (Grande 4-65 20-19 3CH Wellbor	MWD	MWD - Standard	

<b>Survey</b>										
<b>Measured Depth (ft)</b>	<b>Inclination (°)</b>	<b>Azimuth (°)</b>	<b>Vertical Depth (ft)</b>	<b>+N/-S (ft)</b>	<b>+E/-W (ft)</b>	<b>Vertical Section (ft)</b>	<b>Dogleg Rate (°/100usft)</b>	<b>Build Rate (°/100usft)</b>	<b>Turn Rate (°/100usft)</b>	
0.0	0.00	0.00	0.0	0.0	0.0	0.0	0.00	0.00	0.00	
115.0	0.88	278.93	115.0	0.1	-0.9	0.9	0.77	0.77	0.00	
206.0	1.41	274.71	206.0	0.3	-2.7	2.7	0.59	0.58	-4.64	
298.0	1.23	296.33	298.0	0.9	-4.7	4.7	0.57	-0.20	23.50	
383.0	0.44	316.90	382.9	1.5	-5.7	5.8	0.98	-0.93	24.20	
469.0	0.35	297.74	468.9	1.9	-6.2	6.3	0.18	-0.10	-22.28	
554.0	0.62	342.56	553.9	2.4	-6.6	6.7	0.52	0.32	52.73	
640.0	1.67	41.45	639.9	3.8	-5.9	6.0	1.69	1.22	68.48	
725.0	1.93	51.82	724.9	5.6	-3.9	4.2	0.49	0.31	12.20	
810.0	2.11	47.52	809.8	7.6	-1.6	2.0	0.28	0.21	-5.06	

<b>Company:</b>	Crestone Peak Resources	<b>Local Co-ordinate Reference:</b>	Well Grande 4-65 20-19 3CH
<b>Project:</b>	SEC.21-T4S-R65W	<b>TVD Reference:</b>	WELL @ 5647.2ft (Original Well Elev)
<b>Site:</b>	Grande 6-65 20-19 3AH South Pad Sec.21-T4S-R65W	<b>MD Reference:</b>	WELL @ 5647.2ft (Original Well Elev)
<b>Well:</b>	Grande 4-65 20-19 3CH	<b>North Reference:</b>	True
<b>Wellbore:</b>	Grande 4-65 20-19 3CH Wellbore #1	<b>Survey Calculation Method:</b>	Minimum Curvature
<b>Design:</b>	Grande 4-65 20-19 3CH Wellbore #1	<b>Database:</b>	US_EDM

Survey										
Measured Depth (ft)	Inclination (°)	Azimuth (°)	Vertical Depth (ft)	+N/-S (ft)	+E/-W (ft)	Vertical Section (ft)	Dogleg Rate (°/100usft)	Build Rate (°/100usft)	Turn Rate (°/100usft)	
895.0	2.37	43.56	894.8	9.9	0.7	-0.2	0.36	0.31	-4.66	
981.0	2.37	48.30	980.7	12.4	3.3	-2.7	0.23	0.00	5.51	
1,066.0	1.76	60.96	1,065.6	14.2	5.7	-5.0	0.89	-0.72	14.89	
1,151.0	1.58	71.15	1,150.6	15.2	8.0	-7.2	0.41	-0.21	11.99	
1,237.0	1.58	68.52	1,236.6	16.0	10.2	-9.4	0.08	0.00	-3.06	
1,322.0	1.49	66.41	1,321.5	16.9	12.3	-11.5	0.13	-0.11	-2.48	
1,407.0	1.67	68.17	1,406.5	17.8	14.5	-13.6	0.22	0.21	2.07	
1,492.0	1.32	69.92	1,491.5	18.6	16.5	-15.6	0.42	-0.41	2.06	
1,578.0	1.49	74.32	1,577.4	19.2	18.5	-17.6	0.23	0.20	5.12	
1,663.0	1.32	55.51	1,662.4	20.1	20.4	-19.4	0.58	-0.20	-22.13	
1,748.0	1.58	42.33	1,747.4	21.5	22.0	-20.9	0.50	0.31	-15.51	
1,834.0	2.11	34.77	1,833.4	23.7	23.7	-22.5	0.68	0.62	-8.79	
1,919.0	1.49	19.12	1,918.3	26.0	25.0	-23.7	0.92	-0.73	-18.41	
2,004.0	1.06	357.68	2,003.3	27.8	25.3	-23.9	0.75	-0.51	-25.22	
2,090.0	1.32	359.44	2,089.3	29.6	25.3	-23.8	0.31	0.30	2.05	
2,175.0	1.41	7.35	2,174.2	31.6	25.4	-23.8	0.25	0.11	9.31	
2,251.0	1.14	5.24	2,250.2	33.3	25.6	-23.9	0.36	-0.36	-2.78	
2,315.0	1.14	5.24	2,314.2	34.6	25.7	-24.0	0.00	0.00	0.00	

Checked By: \_\_\_\_\_ Approved By: \_\_\_\_\_ Date: \_\_\_\_\_