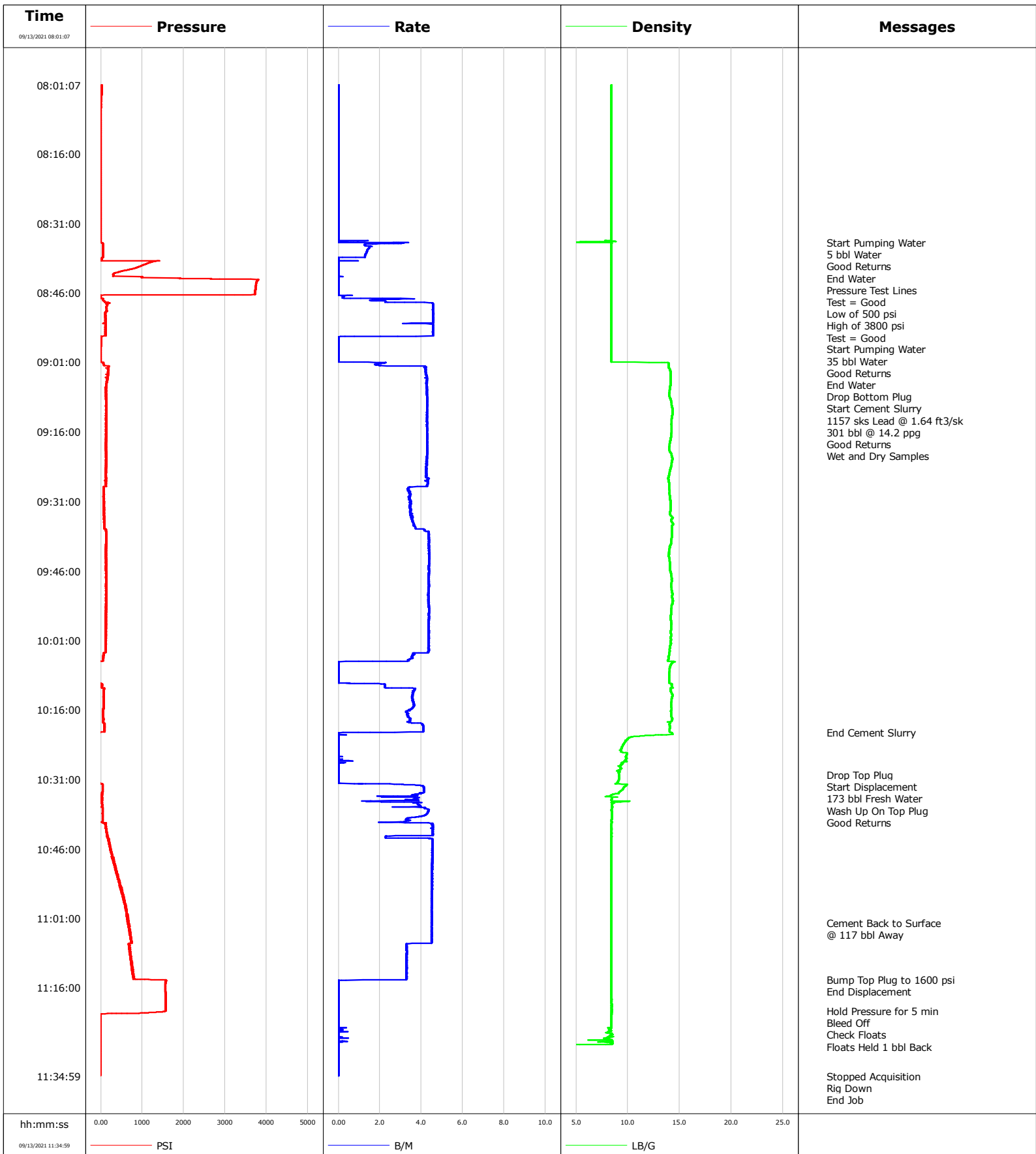


Well	Grande 4-65-20-19-3CH	Client	Crestone
Field	DJ	SIR No.	EN82-00308
Engineer		Job Type	Surface
Country	United States	Job Date	09-15-2021



				Customer			Job Number			
Well				Crestone			EN82-00308			
Grande 4-65-20-19-3CH				Location (legal)			Schlumberger Location			
							Job Start			
							Sep/15/2021			
Field		Formation Name/Type		Deviation		Bit Size		Well MD		Well TVD
DJ				deg		in		ft		ft
County		State/Province		BHP		BHST		BHCT		Pore Press. Gradient
Arapahoe		Colorado		psi		degF		degF		lb/gal
Well Master		API/UWI								
Rig Name		Drilled For		Service Via		Casing/Liner				
Ensign 122		Oil		Land						
						Depth, ft		Size, in		Weight, lb/ft
						2304.0		9.6		40.0
Offshore Zone		Well Class		Well Type		Grade		Thread		
		Old		Development		0.0		0.0		J55
						0.0		0.0		8RD
Drilling Fluid Type		Max. Density		Plastic Viscosity		Tubing/Drill Pipe				
		lb/gal		cP						
						T/D		Depth, ft		Size, in
										Weight, lb/ft
										Grade
										Thread
Service Line		Job Type								
Cementing		Surface								
Max. Allowed Tub. Press		Max. Allowed Ann. Press		WH Connection		Perforations/Open Hole				
psi		psi		Single Cement head						
						Top, ft		Bottom, ft		shot/ft
						ft		ft		No. of Shots
						ft		ft		Total Interval
										ft
Service Instructions						Treat Down		Displacement		Packer Type
Rate and Density Checked						Casing		173.0 bbl		Packer Depth
Flush Lines										ft
Pressure Test Lines - Low of 500 psi / High of 3800 psi										in
Pump 40 bbl Fresh Water Spacer										
Drop Bottom Plug										
Pump 1157 sks Tail @ 1.54 ft3/sk @ 301 bbl @ 14.2 ppg										
Drop Top Plug										
Displace 173 bbl Fresh Water										
Floats Held / 1 bbl Back										
56 bbls Cement to Surface										
Casing/Tubing Secured		1 Hole Vol. Circulated prior to Cement		Casing Tools			Squeeze Job			
<input checked="" type="checkbox"/>		<input checked="" type="checkbox"/>								
Lift Pressure		psi		Shoe Type			Squeeze Type			
Pipe Rotated		Pipe Reciprocated		Shoe Depth			Tool Type			
<input type="checkbox"/>		<input type="checkbox"/>		ft						
No. Centralizers		Top Plugs		Bottom Plugs		Stage Tool Type			Tool Depth	
									ft	
Cement Head Type		Stage Tool Depth			ft		Tail Pipe Size			
							in			
Job Scheduled For		Arrived on Location		Leave Location		Collar Type			Tail Pipe Depth	
Sep/15/2021		Sep/15/2021		Sep/15/2021					ft	
						Collar Depth			Sqz. Total Vol.	
						ft			bbl	
Date	Time 24-hr clock	Treating Pressure PSI	Flow Rate B/M	Density LB/G	Volume BBL	Message				
09/13/2021	08:01:07	18	0.0	8.39	0.0	Started Acquisition				
09/13/2021	08:35:11	12	2.8	8.14	0.3	Start Pumping Water				
09/13/2021	08:36:00	57	1.6	8.41	1.7	5 bbl Water				
09/13/2021	08:36:01	57	1.6	8.41	1.8	Good Returns				
09/13/2021	08:38:21	57	1.3	8.42	5.0	End Water				
09/13/2021	08:43:05	2870	0.0	8.41	5.0	Pressure Test Lines				
09/13/2021	08:43:06	3624	0.0	8.41	5.0	Test = Good				
09/13/2021	08:43:07	3796	0.0	8.41	5.0	Low of 500 psi				
09/13/2021	08:43:08	3799	0.0	8.41	5.0	High of 3800 psi				
09/13/2021	08:43:09	3800	0.0	8.42	5.0	Test = Good				
09/13/2021	08:47:08	-2	0.2	8.41	5.2	Start Pumping Water				
09/13/2021	08:48:00	91	2.3	8.42	7.0	35 bbl Water				
09/13/2021	08:55:43	4	0.0	8.42	40.4	End Water				
09/13/2021	08:59:00	-2	0.0	8.42	40.4	Drop Bottom Plug				
09/13/2021	09:00:56	-3	0.0	8.42	40.4	Start Cement Slurry				
09/13/2021	09:00:57	4	0.3	8.42	40.4	1157 sks Lead @ 1.64 ft3/sk				
09/13/2021	09:00:58	9	0.8	8.42	40.4	301 bbl @ 14.2 ppg				
09/13/2021	09:01:00	32	1.4	10.70	40.5	Good Returns				
09/13/2021	09:01:01	52	1.8	12.09	40.5	Wet and Dry Samples				
09/13/2021	10:30:00	-25	0.0	9.16	345.1	Drop Top Plug				
09/13/2021	10:30:51	-25	0.0	9.15	345.1	Start Displacement				

Well		Field		Job Start		Customer		Job Number	
Grande 4-65-20-19-3CH		DJ		Sep/15/2021		Crestone		EN82-00308	
Date	Time 24-hr clock	Treating Pressure PSI	Flow Rate B/M	Density LB/G	Volume BBL	Message			
09/13/2021	10:31:01	-25	0.0	9.13	345.1	Good Returns			
09/13/2021	11:02:00	653	4.5	8.43	473.4	Cement Back to Surface			
09/13/2021	11:02:01	684	4.5	8.42	473.5	@ 117 bbl Away			
09/13/2021	11:14:15	1408	3.3	8.42	519.0	Bump Top Plug to 1600 psi			
09/13/2021	11:14:16	1478	3.3	8.42	519.0	End Displacement			
09/13/2021	11:20:56	1569	0.0	8.43	519.1	Hold Pressure for 5 min			
09/13/2021	11:20:57	1566	0.0	8.43	519.1	Bleed Off			
09/13/2021	11:20:58	1562	0.0	8.43	519.1	Check Floats			
09/13/2021	11:20:59	1561	0.0	8.43	519.1	Floats Held 1 bbl Back			

Post Job Summary

Average Pump Rates, bbl/min				Volume of Fluid Injected, bbl			
Slurry	N2	Mud	Maximum Rate	Total Slurry	Mud	Spacer	N2
4.0			4.6	301.0	0.0	40.0	
Treating Pressure Summary, psi				Breakdown Fluid			
Maximum	Final	Average	Bump Plug to	Breakdown	Type	Volume	Density
3800	0	364				bbl	lb/gal
Avg. N2 Percent	Designed Slurry Volume		Displacement	Mix Water Temp	Cement Circulated to Surface?	Volume	bbl
%	301.0 bbl		173.0 bbl	73 degF	<input checked="" type="checkbox"/>	To	ft
Customer or Authorized Representative			Schlumberger Supervisor		Washed Thru Perfs	Circulation Lost	Job Completed
Ricky					<input type="checkbox"/>	-	<input checked="" type="checkbox"/>