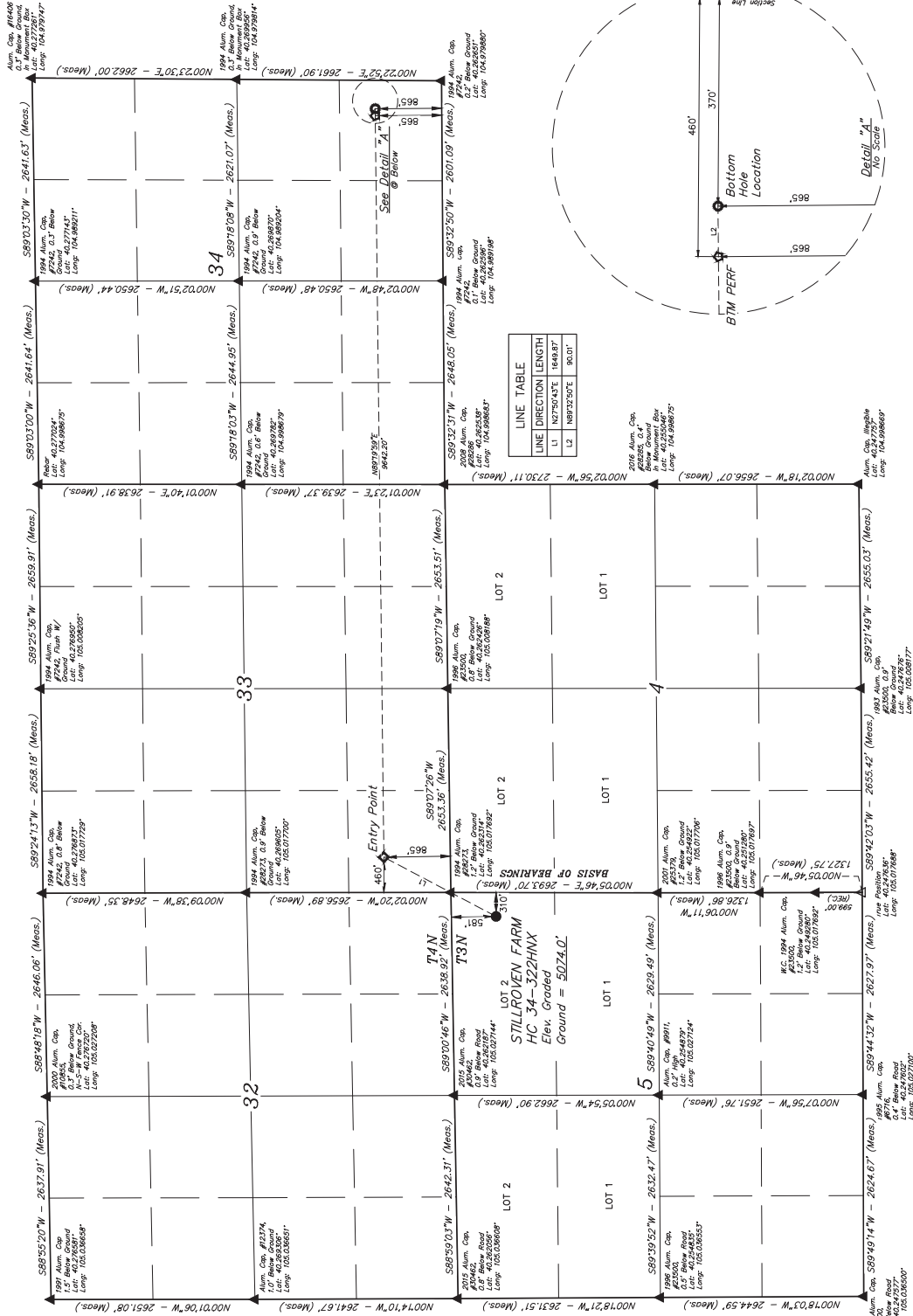
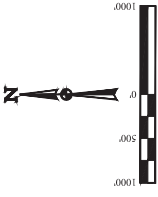


GREAT WESTERN OPERATING COMPANY

STILLROVEN FARM HC 34-322HNX
NE 1/4 NE 1/4, SECTION 5, T3N, R68W, 6th P.M.
WELD COUNTY, COLORADO

OPUS SOLUTION GENERATED NAVD 83



CERTIFICATE OF SURVEY
THIS IS TO CERTIFY THAT THE ABOVE
DESCRIPTION AND MONUMENTS ARE TRUE
AND THAT THE SAME ARE THE WORK
OF THE SURVEYOR'S KNOWLEDGE AND BELIEF.

PROF = 1.3

NAID (BUREAU) LOCATION	NAID (ENTRY POINT)	NAID (BOTTOM HOLE LOCATION)
1994 Alum. Cap. #12374 1.5' Below Ground Lat: 40.265000 Long: 105.036658	1994 Alum. Cap. #12374 1.5' Below Ground Lat: 40.265000 Long: 105.036658	1994 Alum. Cap. #12374 1.5' Below Ground Lat: 40.265000 Long: 105.036658
1994 Alum. Cap. #12374 1.5' Below Ground Lat: 40.265000 Long: 105.036658	1994 Alum. Cap. #12374 1.5' Below Ground Lat: 40.265000 Long: 105.036658	1994 Alum. Cap. #12374 1.5' Below Ground Lat: 40.265000 Long: 105.036658
1994 Alum. Cap. #12374 1.5' Below Ground Lat: 40.265000 Long: 105.036658	1994 Alum. Cap. #12374 1.5' Below Ground Lat: 40.265000 Long: 105.036658	1994 Alum. Cap. #12374 1.5' Below Ground Lat: 40.265000 Long: 105.036658
1994 Alum. Cap. #12374 1.5' Below Ground Lat: 40.265000 Long: 105.036658	1994 Alum. Cap. #12374 1.5' Below Ground Lat: 40.265000 Long: 105.036658	1994 Alum. Cap. #12374 1.5' Below Ground Lat: 40.265000 Long: 105.036658

NOTE:
Distances referenced
on plat to section lines
are perpendicular.

LEGEND:

- = PROPOSED WELHEAD
- = ENTRY POINT
- = BTM PERF. LOCATION
- = SECTION CORNERS LOCATED (NAD 83)
- = SECTION CORNERS RE-ESTABLISHED (Not Set on Ground) (NAD 83)