

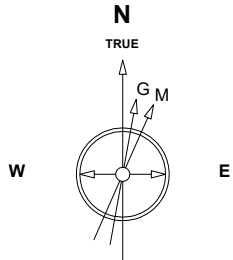
Great Western Operating Company, LLC

Location Colorado
Field Wattenburg
Installation Stillroven Farm

Slot Stillroven Farm 2
Well Stillroven Farm HC 34-322HNX
Wellbore Stillroven Farm HC 34-322HNX (PWB)

Created by mmount
Date plotted 20-Jul-2021

Plot reference is Stillroven Farm HC 34-322HNX (PWB).
Ref wellpath is Stillroven Farm HC 34-322HNX (PWP#1).
Coordinates are in Feet reference Stillroven Farm 2.
True Vertical Depths are reference Rig Datum.
Measured Depths are reference Rig Datum.
Rig Datum: Planned Datum #1
Rig Datum to Mean Sea Level: 5095.00 ft.
Plot North is aligned to TRUE North.

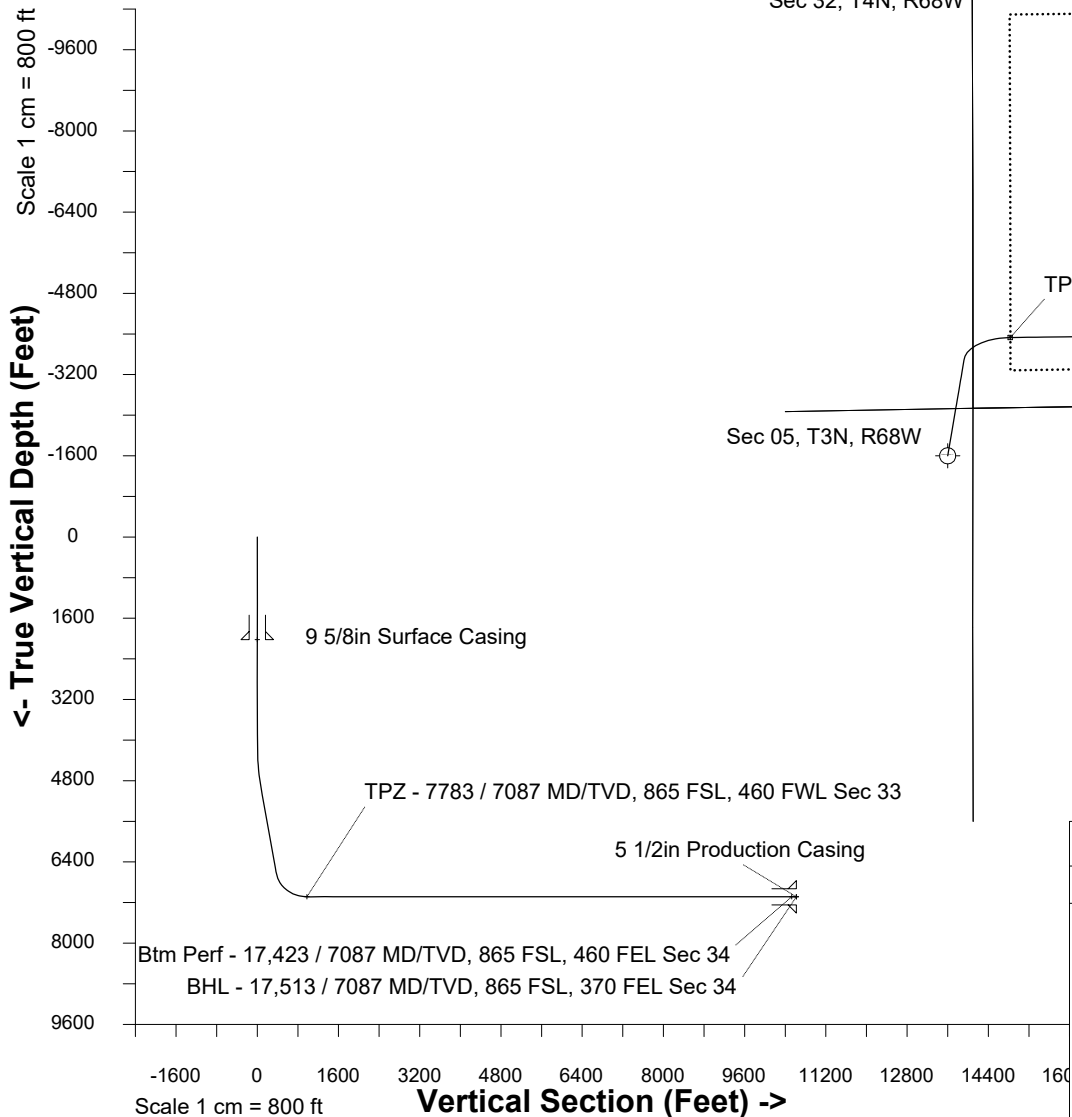
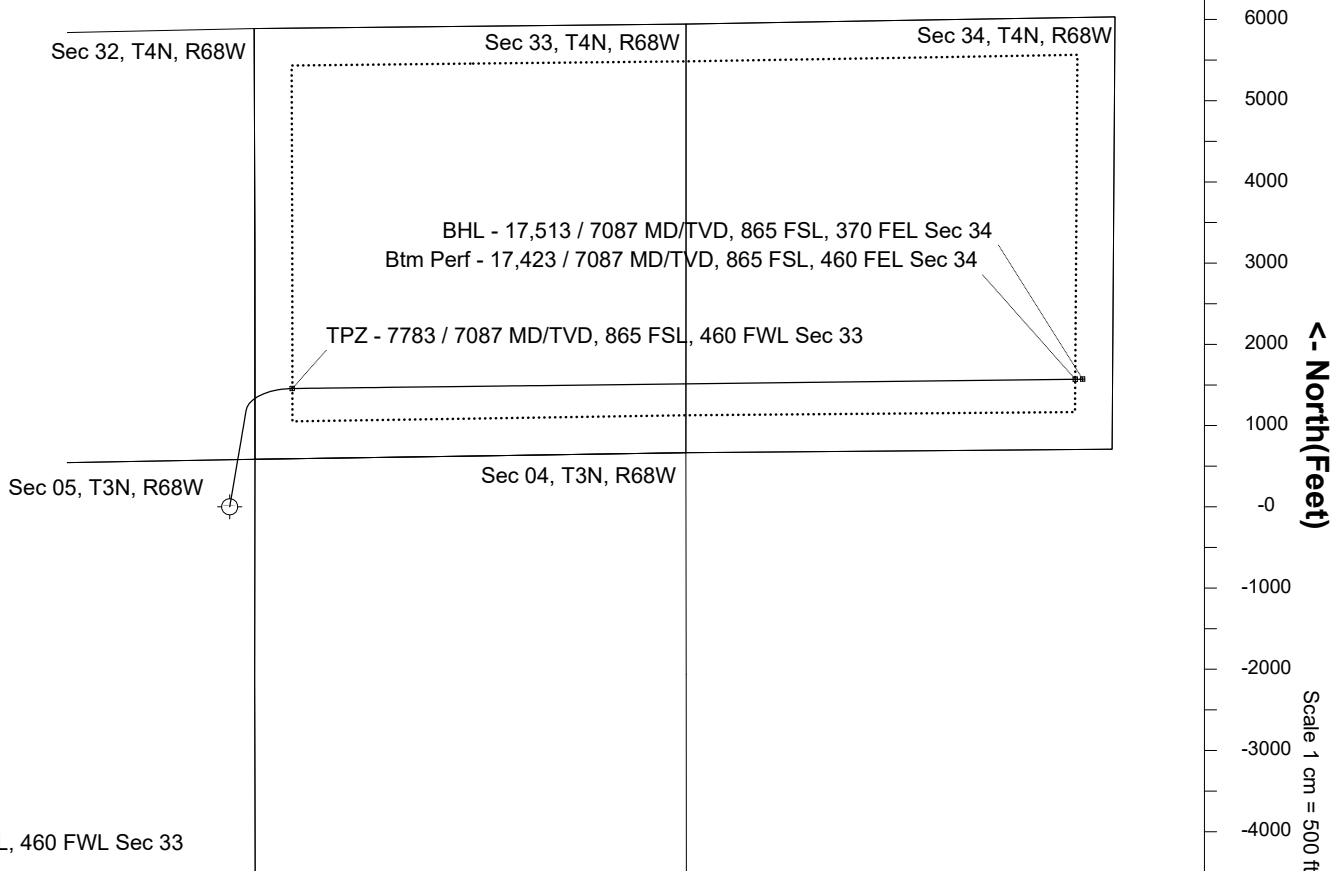


Aug-10-2018
EMM-2015 Dip: 66.62 deg Field: 52108.7 nT
Lat: N40 15 38.7000 Long: W105 1 7.7160 Elev: 5075.00 ft
Magnetic North is 8.48 deg East of TRUE North
To correct azimuth from Magnetic to TRUE add 8.48 deg

Scale 1 cm = 500 ft

East (Feet) ->

-2000 -1000 0 1000 2000 3000 4000 5000 6000 7000 8000 9000 10000 11000 12000



Azimuth 81.49 with reference 0.00 N, 0.00 E from Stillroven Farm 2

WELL PROFILE DATA

Point	MD	Inc	Azi	TVD	North	East	deg/100ft	V. Sect
Tie on	0.00	0.00	0.00	0.00	S 0.00	W 0.00		0.00
KOP	4027.00	0.00	9.69	4027.00	S 0.00	W 0.00	0.00	0.00
End of Build	5027.04	30.00	9.69	4981.96	N 252.24	E 43.06	3.00	79.92
End of Hold	6934.22	30.00	9.69	6633.61	N 1192.26	E 203.55	0.00	377.75
Target TPZ - ...Sec 33	7782.60	90.00	89.32	7087.00	N 1456.50	E 771.09	10.00	978.15
Target Btm Pe...Sec 34	17422.61	90.00	89.32	7087.00	N 1570.52	E 10410.43	0.00	10528.22
End of Turn	17424.53	90.00	89.51	7087.00	N 1570.54	E 10412.35	10.00	10530.12
T.D. & Target BHL... 34	17512.75	90.00	89.51	7087.00	N 1571.28	E 10500.57	0.00	10617.48

Header Information	measured depth (ft)	inclination (°)	azimuth (°)	true vertical depth (ft)	northing +N/-S (ft)	easting +E/-W (ft)
Operator Name	100	0.00	0.00	100	0.00	0.00
Great Western Oil & Gas Company LLC	200	0.00	0.00	200	0.00	0.00
Operator Number	300	0.00	0.00	300	0.00	0.00
10110	400	0.00	0.00	400	0.00	0.00
Well Name and Number	500	0.00	0.00	500	0.00	0.00
Stillroven Farm HC 34-322HXX	600	0.00	0.00	600	0.00	0.00
API Number (if available)	700	0.00	0.00	700	0.00	0.00
05-123-45411	800	0.00	0.00	800	0.00	0.00
Location: QQ SEC TWP RGE	900	0.00	0.00	900	0.00	0.00
NENE 05 3N 68W	1,000	0.00	0.00	1,000	0.00	0.00
Citing Type: Planned or Actual	1,100	0.00	0.00	1,100	0.00	0.00
Planned	1,200	0.00	0.00	1,200	0.00	0.00
Deviation Indicator	1,300	0.00	0.00	1,300	0.00	0.00
Horizontal ▼	1,400	0.00	0.00	1,400	0.00	0.00
North Reference	1,500	0.00	0.00	1,500	0.00	0.00
True ▼	1,600	0.00	0.00	1,600	0.00	0.00
Grid Type	1,700	0.00	0.00	1,700	0.00	0.00
▼	1,800	0.00	0.00	1,800	0.00	0.00
	1,900	0.00	0.00	1,900	0.00	0.00
	2,000	0.00	0.00	2,000	0.00	0.00
	2,100	0.00	0.00	2,100	0.00	0.00
	2,200	0.00	0.00	2,200	0.00	0.00
	2,300	0.00	0.00	2,300	0.00	0.00
	2,400	0.00	0.00	2,400	0.00	0.00
	2,500	0.00	0.00	2,500	0.00	0.00
	2,600	0.00	0.00	2,600	0.00	0.00
	2,700	0.00	0.00	2,700	0.00	0.00
	2,800	0.00	0.00	2,800	0.00	0.00
	2,900	0.00	0.00	2,900	0.00	0.00

3,000	0.00	0.00	3,000	0.00	0.00
3,100	0.00	0.00	3,100	0.00	0.00
3,200	0.00	0.00	3,200	0.00	0.00
3,300	0.00	0.00	3,300	0.00	0.00
3,400	0.00	0.00	3,400	0.00	0.00
3,500	0.00	0.00	3,500	0.00	0.00
3,600	0.00	0.00	3,600	0.00	0.00
3,700	0.00	0.00	3,700	0.00	0.00
3,800	0.00	0.00	3,800	0.00	0.00
3,900	0.00	0.00	3,900	0.00	0.00
4,000	0.00	0.00	4,000	0.00	0.00
4,100	2.19	9.69	4,100	1.38	0.23
4,200	5.19	9.69	4,200	7.72	1.32
4,300	8.19	9.69	4,299	19.20	3.28
4,400	11.19	9.69	4,398	35.79	6.11
4,500	14.19	9.69	4,495	57.44	9.81
4,600	17.19	9.69	4,591	84.10	14.36
4,700	20.19	9.69	4,686	115.68	19.75
4,800	23.19	9.69	4,779	152.11	25.97
4,900	26.19	9.69	4,870	193.28	33.00
5,000	29.19	9.69	4,958	239.08	40.82
5,100	30.00	9.69	5,045	288.20	49.20
5,200	30.00	9.69	5,132	337.49	57.62
5,300	30.00	9.69	5,218	386.78	66.03
5,400	30.00	9.69	5,305	436.07	74.45
5,500	30.00	9.69	5,392	485.36	82.86
5,600	30.00	9.69	5,478	534.65	91.28
5,700	30.00	9.69	5,565	583.94	99.69
5,800	30.00	9.69	5,651	633.22	108.11
5,900	30.00	9.69	5,738	682.51	116.52
6,000	30.00	9.69	5,825	731.80	124.93
6,100	30.00	9.69	5,911	781.09	133.35
6,200	30.00	9.69	5,998	830.38	141.76
6,300	30.00	9.69	6,084	879.67	150.18

6,400	30.00	9.69	6,171	928.95	158.59
6,500	30.00	9.69	6,258	978.24	167.01
6,600	30.00	9.69	6,344	1,027.53	175.42
6,700	30.00	9.69	6,431	1,076.82	183.84
6,800	30.00	9.69	6,517	1,126.11	192.25
6,900	30.00	9.69	6,604	1,175.40	200.67
7,000	31.64	22.14	6,690	1,224.49	212.83
7,100	36.13	38.24	6,773	1,272.06	241.03
7,200	42.31	50.72	6,851	1,316.64	285.45
7,300	49.55	60.36	6,920	1,356.87	344.72
7,400	57.42	68.04	6,980	1,391.53	417.04
7,500	65.69	74.45	7,028	1,419.56	500.23
7,600	74.19	80.07	7,062	1,440.13	591.75
7,700	82.82	85.22	7,082	1,452.59	688.82
7,800	90.00	89.32	7,087	1,456.70	788.49
7,900	90.00	89.32	7,087	1,457.89	888.48
8,000	90.00	89.32	7,087	1,459.07	988.48
8,100	90.00	89.32	7,087	1,460.25	1,088.47
8,200	90.00	89.32	7,087	1,461.43	1,188.46
8,300	90.00	89.32	7,087	1,462.62	1,288.46
8,400	90.00	89.32	7,087	1,463.80	1,388.45
8,500	90.00	89.32	7,087	1,464.98	1,488.44
8,600	90.00	89.32	7,087	1,466.17	1,588.44
8,700	90.00	89.32	7,087	1,467.35	1,688.43
8,800	90.00	89.32	7,087	1,468.53	1,788.42
8,900	90.00	89.32	7,087	1,469.71	1,888.41
9,000	90.00	89.32	7,087	1,470.90	1,988.41
9,100	90.00	89.32	7,087	1,472.08	2,088.40
9,200	90.00	89.32	7,087	1,473.26	2,188.39
9,300	90.00	89.32	7,087	1,474.44	2,288.39
9,400	90.00	89.32	7,087	1,475.63	2,388.38
9,500	90.00	89.32	7,087	1,476.81	2,488.37
9,600	90.00	89.32	7,087	1,477.99	2,588.37
9,700	90.00	89.32	7,087	1,479.18	2,688.36

9,800	90.00	89.32	7,087	1,480.36	2,788.35
9,900	90.00	89.32	7,087	1,481.54	2,888.34
10,000	90.00	89.32	7,087	1,482.72	2,988.34
10,100	90.00	89.32	7,087	1,483.91	3,088.33
10,200	90.00	89.32	7,087	1,485.09	3,188.32
10,300	90.00	89.32	7,087	1,486.27	3,288.32
10,400	90.00	89.32	7,087	1,487.45	3,388.31
10,500	90.00	89.32	7,087	1,488.64	3,488.30
10,600	90.00	89.32	7,087	1,489.82	3,588.30
10,700	90.00	89.32	7,087	1,491.00	3,688.29
10,800	90.00	89.32	7,087	1,492.19	3,788.28
10,900	90.00	89.32	7,087	1,493.37	3,888.28
11,000	90.00	89.32	7,087	1,494.55	3,988.27
11,100	90.00	89.32	7,087	1,495.73	4,088.26
11,200	90.00	89.32	7,087	1,496.92	4,188.25
11,300	90.00	89.32	7,087	1,498.10	4,288.25
11,400	90.00	89.32	7,087	1,499.28	4,388.24
11,500	90.00	89.32	7,087	1,500.47	4,488.23
11,600	90.00	89.32	7,087	1,501.65	4,588.23
11,700	90.00	89.32	7,087	1,502.83	4,688.22
11,800	90.00	89.32	7,087	1,504.01	4,788.21
11,900	90.00	89.32	7,087	1,505.20	4,888.21
12,000	90.00	89.32	7,087	1,506.38	4,988.20
12,100	90.00	89.32	7,087	1,507.56	5,088.19
12,200	90.00	89.32	7,087	1,508.74	5,188.18
12,300	90.00	89.32	7,087	1,509.93	5,288.18
12,400	90.00	89.32	7,087	1,511.11	5,388.17
12,500	90.00	89.32	7,087	1,512.29	5,488.16
12,600	90.00	89.32	7,087	1,513.48	5,588.16
12,700	90.00	89.32	7,087	1,514.66	5,688.15
12,800	90.00	89.32	7,087	1,515.84	5,788.14
12,900	90.00	89.32	7,087	1,517.02	5,888.14
13,000	90.00	89.32	7,087	1,518.21	5,988.13
13,100	90.00	89.32	7,087	1,519.39	6,088.12

13,200	90.00	89.32	7,087	1,520.57	6,188.11
13,300	90.00	89.32	7,087	1,521.76	6,288.11
13,400	90.00	89.32	7,087	1,522.94	6,388.10
13,500	90.00	89.32	7,087	1,524.12	6,488.09
13,600	90.00	89.32	7,087	1,525.30	6,588.09
13,700	90.00	89.32	7,087	1,526.49	6,688.08
13,800	90.00	89.32	7,087	1,527.67	6,788.07
13,900	90.00	89.32	7,087	1,528.85	6,888.07
14,000	90.00	89.32	7,087	1,530.03	6,988.06
14,100	90.00	89.32	7,087	1,531.22	7,088.05
14,200	90.00	89.32	7,087	1,532.40	7,188.04
14,300	90.00	89.32	7,087	1,533.58	7,288.04
14,400	90.00	89.32	7,087	1,534.77	7,388.03
14,500	90.00	89.32	7,087	1,535.95	7,488.02
14,600	90.00	89.32	7,087	1,537.13	7,588.02
14,700	90.00	89.32	7,087	1,538.31	7,688.01
14,800	90.00	89.32	7,087	1,539.50	7,788.00
14,900	90.00	89.32	7,087	1,540.68	7,888.00
15,000	90.00	89.32	7,087	1,541.86	7,987.99
15,100	90.00	89.32	7,087	1,543.04	8,087.98
15,200	90.00	89.32	7,087	1,544.23	8,187.97
15,300	90.00	89.32	7,087	1,545.41	8,287.97
15,400	90.00	89.32	7,087	1,546.59	8,387.96
15,500	90.00	89.32	7,087	1,547.78	8,487.95
15,600	90.00	89.32	7,087	1,548.96	8,587.95
15,700	90.00	89.32	7,087	1,550.14	8,687.94
15,800	90.00	89.32	7,087	1,551.32	8,787.93
15,900	90.00	89.32	7,087	1,552.51	8,887.93
16,000	90.00	89.32	7,087	1,553.69	8,987.92
16,100	90.00	89.32	7,087	1,554.87	9,087.91
16,200	90.00	89.32	7,087	1,556.06	9,187.90
16,300	90.00	89.32	7,087	1,557.24	9,287.90
16,400	90.00	89.32	7,087	1,558.42	9,387.89
16,500	90.00	89.32	7,087	1,559.60	9,487.88

[illegible]

[illegible]

[illegible]