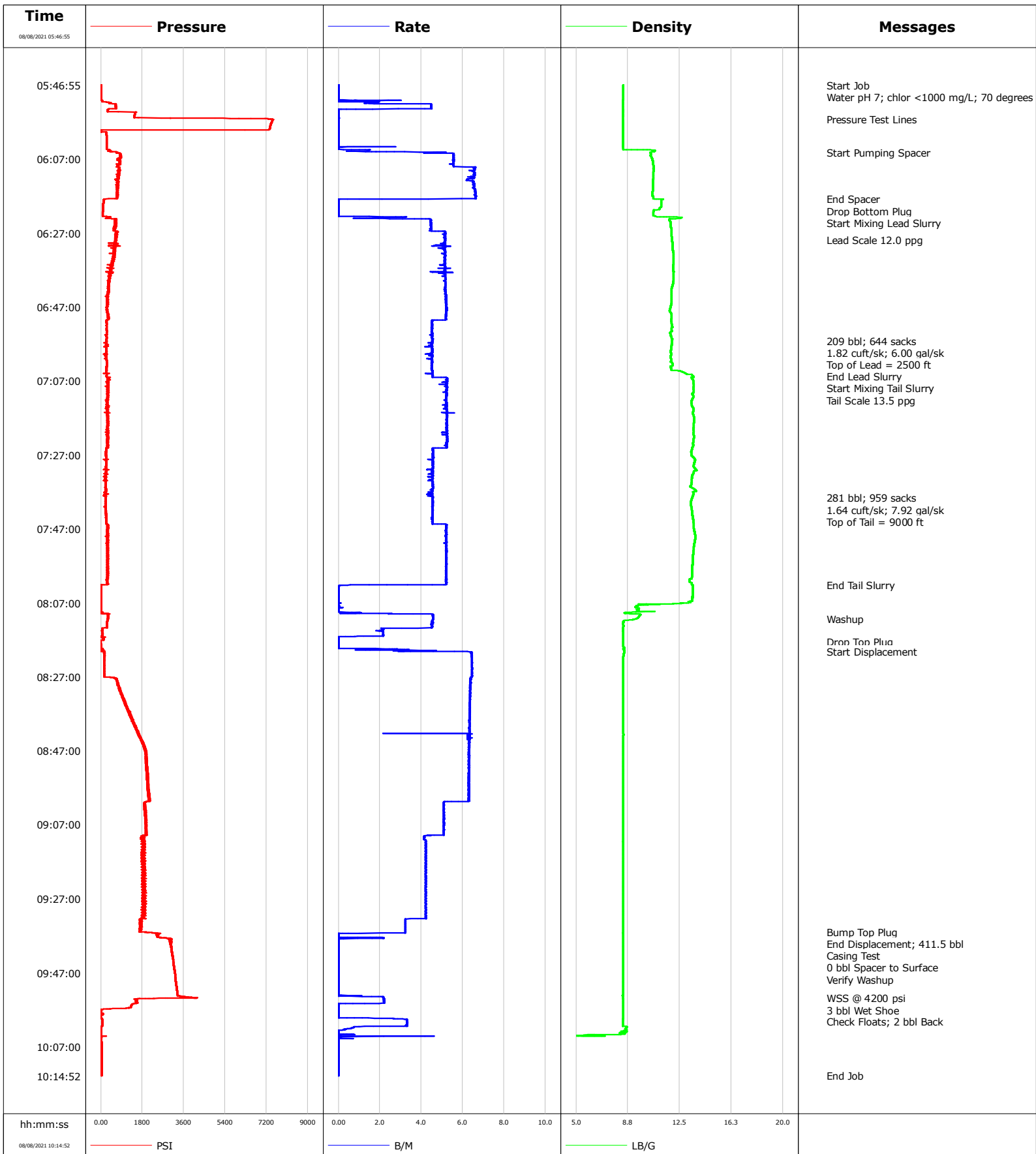


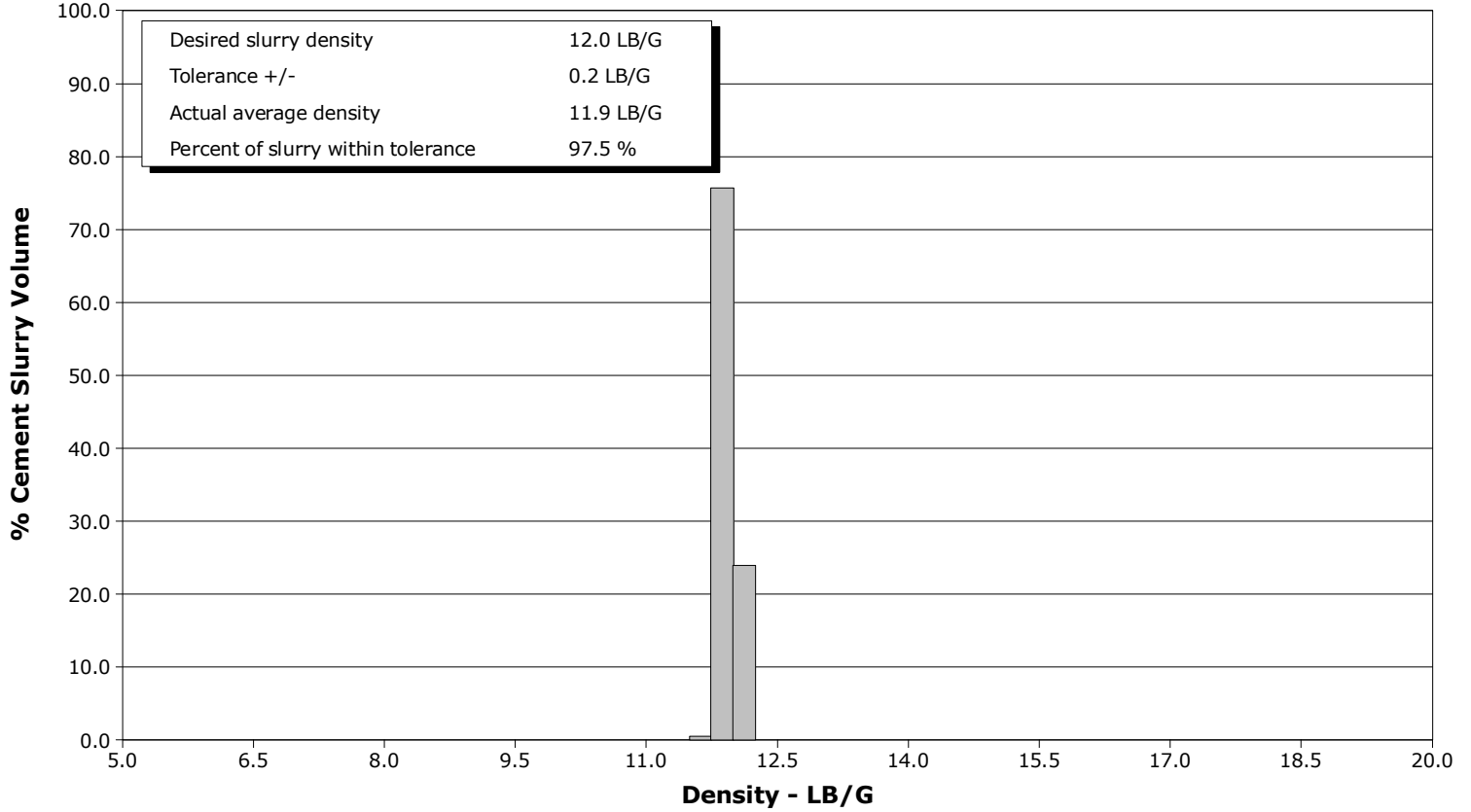
Well	Bake 11-22HZ	Client	Oxy
Field	Wattenberg	SIR No.	EAJ7-02408
Engineer	Grayland Balmer	Job Type	Production
Country	United States	Job Date	08-08-2021



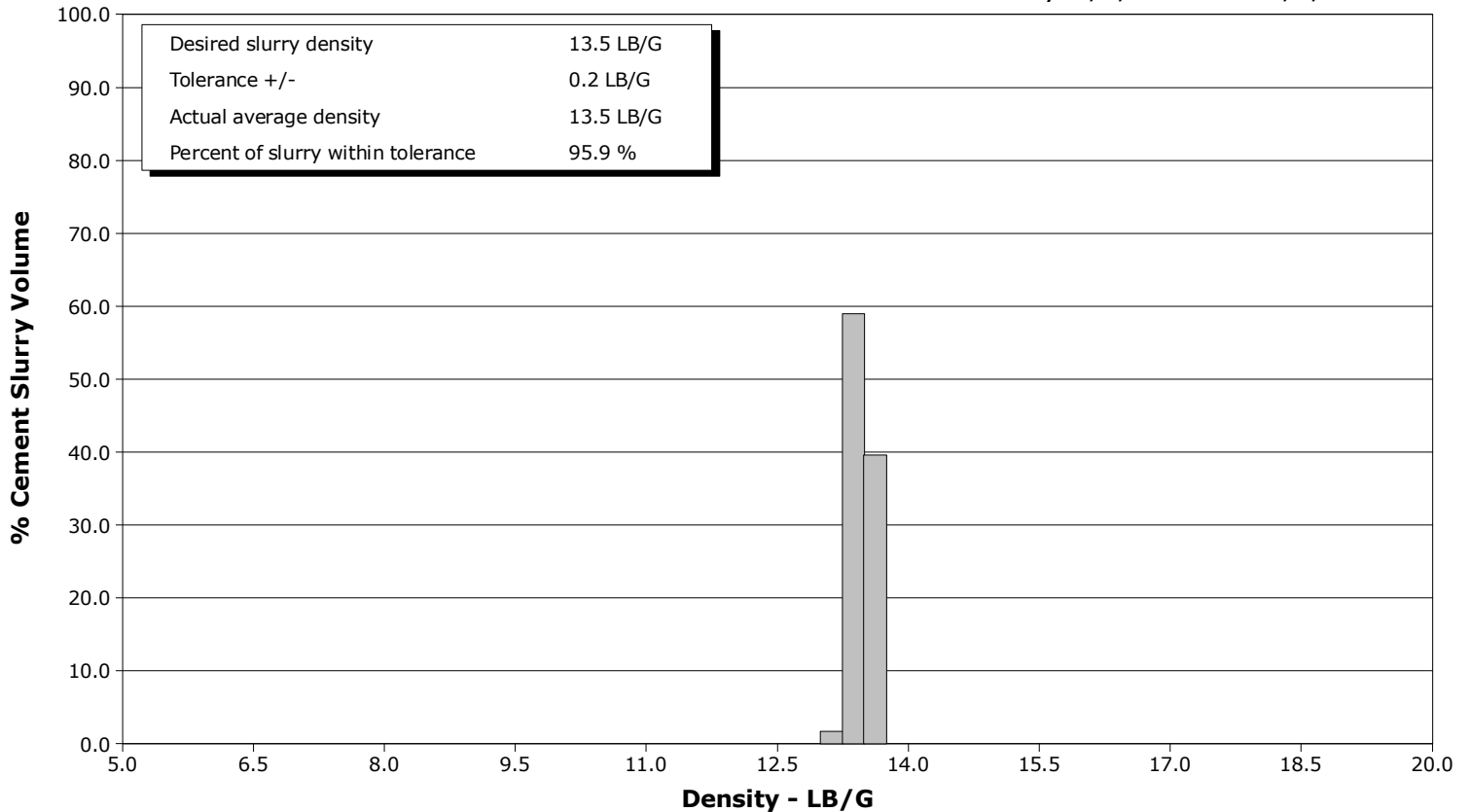
Well Bake 11-22HZ
Field Wattenberg
Engineer Grayland Balmer
Country United States

Client Oxy
SIR No. EAJ7-02408
Job Type Production
Job Date 08-08-2021

Lead Slurry - 08/08/2021 06:23:08 to 08/08/2021 07:04:00



Tail Slurry - 08/08/2021 07:05:30 to 08/08/2021 08:02:03



				Customer			Job Number			
				Oxy			EAJ7-02408			
Well		Location (legal)		Schlumberger Location			Job Start			
Bake 11-22HZ		PD461		Cheyenne			Aug/08/2021			
Field		Formation Name/Type		Deviation	Bit Size		Well MD		Well TVD	
Wattenberg				deg	7.9 in		17712.0 ft		6600.0 ft	
County		State/Province		BHP	BHST	BHCT	Pore Press. Gradient			
Weld		Colorado		psi	230 degF	230 degF	lb/gal			
Well Master		API/UWI								
0066139377		05-123-51408-00-00								
Rig Name	Drilled For		Service Via	Casing/Liner						
PD461				Depth, ft		Size, in	Weight, lb/ft	Grade	Thread	
Offshore Zone	Well Class		Well Type	1900.0		9.6	36.0	J55		
				17703.0		5.5	17.0	P110		
Drilling Fluid Type		Max. Density	Plastic Viscosity	Tubing/Drill Pipe						
OBM		9.30 lb/gal	cP	T/D	Depth, ft	Size, in	Weight, lb/ft	Grade	Thread	
Service Line	Job Type									
Cementing	Production									
Max. Allowed Tub. Press	Max. Allowed Ann. Press		WH Connection	Perforations/Open Hole						
psi	psi			Top, ft	Bottom, ft	shot/ft	No. of Shots	Total Interval		
				ft	ft			ft		
				ft	ft			Diameter		
				ft	ft			in		
Service Instructions	Water pH 7; Chlorides<1000 mg/L; 70 Degrees	Pressure Test 1000/7500	80 bbl spacer	Drop Bottom Plug	209 bbl Lead (644 sacks; 1.82 cuft/sk; 6.00 gal/sk; top = 2500 ft)	281 bbl Tail (959 sacks; 1.64 cuft/sk; 7.92 gal/sk; top = 9000 ft)	Washup Pump and Lines	Drop Top Plug	Displace 411.5 bbl	0 bbl Spacer to Surface
Casing/Tubing Secured	<input checked="" type="checkbox"/>	1 Hole Vol. Circulated prior to Cement	<input checked="" type="checkbox"/>	Casing Tools			Squeeze Job			
Lift Pressure	psi	Shoe Type	Float	Squeeze Type						
Pipe Rotated	<input type="checkbox"/>	Pipe Reciprocated	<input type="checkbox"/>	Shoe Depth	17703.0 ft	Tool Type				
No. Centralizers		Top Plugs	1	Bottom Plugs	1	Stage Tool Type		Tool Depth	ft	
Cement Head Type	Double	Stage Tool Depth	ft	Tail Pipe Size	in					
Job Scheduled For	Aug/08/2021 03:00	Arrived on Location	Aug/08/2021 03:00	Leave Location	Aug/08/2021	Collar Type	Float	Tail Pipe Depth	ft	
						Collar Depth	17700.0 ft	Sqz. Total Vol.	bbl	
Date	Time 24-hr clock	PRESSURE PSI	RATE B/M	DENSITY LB/G	Message					
08/08/2021	05:46:55	3	0.0	8.41	Started Acquisition					
08/08/2021	05:46:58	2	0.0	8.42	Start Job					
08/08/2021	05:47:00	3	0.0	8.41	Water pH 7; chlor <1000 mg/L; 70 degrees					
08/08/2021	05:47:30	3	0.0	8.41						
08/08/2021	05:48:05	5	0.0	8.42						
08/08/2021	05:48:40	3	0.0	8.41						
08/08/2021	05:49:15	3	0.0	8.41						
08/08/2021	05:49:50	3	0.0	8.42						
08/08/2021	05:50:25	2	0.0	8.42						
08/08/2021	05:51:00	3	0.0	8.42						
08/08/2021	05:51:35	237	2.0	8.39						
08/08/2021	05:52:10	645	4.5	8.38						
08/08/2021	05:52:45	638	4.5	8.38						
08/08/2021	05:53:20	656	4.5	8.38						
08/08/2021	05:53:55	288	0.0	8.39						
08/08/2021	05:54:30	1487	0.0	8.39						
08/08/2021	05:55:05	1460	0.0	8.39						
08/08/2021	05:56:12	7368	0.0	8.39	Pressure Test Lines					
08/08/2021	05:56:15	7464	0.0	8.39						
08/08/2021	05:56:50	7434	0.0	8.39						
08/08/2021	05:57:25	7394	0.0	8.39						

Well		Field	Job Start	Customer	Job Number
Bake 11-22HZ		Wattenberg	Aug/08/2021	Oxy	EAJ7-02408
Date	Time 24-hr clock	PRESSURE PSI	RATE B/M	DENSITY LB/G	Message
08/08/2021	05:58:35	7341	0.0	8.39	
08/08/2021	05:59:10	11	0.0	8.39	
08/08/2021	05:59:45	233	0.0	8.39	
08/08/2021	06:00:20	234	0.0	8.39	
08/08/2021	06:00:55	241	0.0	8.39	
08/08/2021	06:01:30	248	0.0	8.39	
08/08/2021	06:02:05	253	0.0	8.39	
08/08/2021	06:02:40	255	0.0	8.39	
08/08/2021	06:03:15	257	0.0	8.39	
08/08/2021	06:03:50	256	0.0	8.40	
08/08/2021	06:04:25	285	0.2	8.40	
08/08/2021	06:05:00	399	1.8	10.64	
08/08/2021	06:05:18	692	4.2	10.39	Start Pumping Spacer
08/08/2021	06:05:35	838	5.6	10.39	
08/08/2021	06:06:10	888	5.5	10.40	
08/08/2021	06:06:45	774	5.6	10.49	
08/08/2021	06:07:20	845	5.6	10.53	
08/08/2021	06:07:55	816	5.5	10.55	
08/08/2021	06:08:30	843	5.5	10.58	
08/08/2021	06:09:05	685	6.2	10.63	
08/08/2021	06:09:40	796	6.6	10.61	
08/08/2021	06:10:15	749	6.5	10.61	
08/08/2021	06:10:50	817	6.6	10.60	
08/08/2021	06:11:25	789	6.6	10.59	
08/08/2021	06:12:00	750	6.6	10.59	
08/08/2021	06:12:35	714	6.2	10.57	
08/08/2021	06:13:10	808	6.5	10.57	
08/08/2021	06:13:45	768	6.5	10.56	
08/08/2021	06:14:20	735	6.5	10.55	
08/08/2021	06:14:55	732	6.5	10.55	
08/08/2021	06:15:30	700	6.6	10.55	
08/08/2021	06:16:05	721	6.6	10.52	
08/08/2021	06:16:40	688	6.6	10.52	
08/08/2021	06:17:15	698	6.6	10.60	
08/08/2021	06:17:46	182	4.3	10.71	End Spacer
08/08/2021	06:17:50	157	0.1	11.21	
08/08/2021	06:18:25	112	0.0	11.17	
08/08/2021	06:19:00	107	0.0	11.16	
08/08/2021	06:19:32	99	0.0	11.15	Drop Bottom Plug
08/08/2021	06:19:35	99	0.0	11.16	
08/08/2021	06:20:10	92	0.0	11.06	
08/08/2021	06:20:45	88	0.0	10.66	
08/08/2021	06:21:20	85	0.0	10.60	
08/08/2021	06:21:55	82	0.0	10.60	
08/08/2021	06:22:30	79	0.0	10.75	
08/08/2021	06:23:05	415	2.2	12.45	
08/08/2021	06:23:08	596	3.7	11.90	Start Mixing Lead Slurry
08/08/2021	06:23:40	658	4.5	11.78	
08/08/2021	06:24:15	664	4.5	11.83	
08/08/2021	06:25:25	591	4.5	11.85	
08/08/2021	06:26:00	633	4.5	11.91	
08/08/2021	06:26:35	717	5.1	11.93	
08/08/2021	06:27:10	635	5.1	11.92	
08/08/2021	06:27:45	651	5.1	11.93	

Well		Field	Job Start	Customer	Job Number
Bake 11-22HZ		Wattenberg	Aug/08/2021	Oxy	EAJ7-02408
Date	Time 24-hr clock	PRESSURE PSI	RATE B/M	DENSITY LB/G	Message
08/08/2021	06:28:55	676	5.1	11.95	Lead Scale 12.0 ppg
08/08/2021	06:29:30	607	5.1	11.97	
08/08/2021	06:30:05	575	5.1	11.97	
08/08/2021	06:30:40	590	5.2	11.98	
08/08/2021	06:31:15	613	5.0	11.99	
08/08/2021	06:31:50	614	5.1	12.01	
08/08/2021	06:32:25	552	5.1	12.05	
08/08/2021	06:33:00	529	5.2	12.06	
08/08/2021	06:33:35	628	5.1	12.05	
08/08/2021	06:34:10	554	5.1	12.04	
08/08/2021	06:34:45	492	5.1	12.04	
08/08/2021	06:35:20	447	5.1	12.04	
08/08/2021	06:35:55	467	5.1	12.03	
08/08/2021	06:36:30	506	4.9	12.01	
08/08/2021	06:37:05	421	5.1	12.03	
08/08/2021	06:37:40	387	5.4	12.06	
08/08/2021	06:38:15	356	5.2	12.05	
08/08/2021	06:38:50	399	5.1	12.05	
08/08/2021	06:39:25	362	5.2	12.05	
08/08/2021	06:40:00	329	5.1	12.04	
08/08/2021	06:40:35	309	5.1	12.02	
08/08/2021	06:41:10	353	5.2	11.98	
08/08/2021	06:41:45	359	5.1	11.94	
08/08/2021	06:42:20	325	5.2	11.91	
08/08/2021	06:42:55	310	5.2	11.91	
08/08/2021	06:43:30	316	5.2	11.90	
08/08/2021	06:44:05	317	5.2	11.90	
08/08/2021	06:44:40	266	5.2	11.91	
08/08/2021	06:45:15	273	5.2	11.92	
08/08/2021	06:45:50	298	5.2	11.91	
08/08/2021	06:46:25	298	5.2	11.88	
08/08/2021	06:47:00	244	5.2	11.84	
08/08/2021	06:47:35	259	5.2	11.81	
08/08/2021	06:48:10	244	5.2	11.78	
08/08/2021	06:48:45	319	5.2	11.89	
08/08/2021	06:49:20	305	5.2	11.92	
08/08/2021	06:49:55	342	5.2	11.91	
08/08/2021	06:50:30	273	5.0	11.87	
08/08/2021	06:51:05	250	4.5	11.90	
08/08/2021	06:51:40	258	4.5	11.93	
08/08/2021	06:52:15	237	4.5	11.96	
08/08/2021	06:52:50	252	4.5	11.91	
08/08/2021	06:53:25	252	4.5	11.95	
08/08/2021	06:54:00	250	4.5	11.80	
08/08/2021	06:54:35	213	4.4	11.86	
08/08/2021	06:55:10	248	4.5	11.90	
08/08/2021	06:55:45	242	4.5	11.96	
08/08/2021	06:56:09	238	4.5	11.95	209 bbl; 644 sacks
08/08/2021	06:56:12	244	4.5	11.95	1.82 cuft/sk; 6.00 gal/sk
08/08/2021	06:56:14	237	4.5	11.95	Top of Lead = 2500 ft
08/08/2021	06:56:20	246	4.5	11.95	
08/08/2021	06:56:55	246	4.5	11.94	
08/08/2021	06:57:30	234	4.5	11.90	
08/08/2021	06:58:05	237	4.5	11.87	

Well		Field	Job Start	Customer	Job Number
Bake 11-22HZ		Wattenberg	Aug/08/2021	Oxy	EAJ7-02408
Date	Time 24-hr clock	PRESSURE PSI	RATE B/M	DENSITY LB/G	Message
08/08/2021	06:59:15	239	4.5	11.85	
08/08/2021	06:59:50	240	4.5	11.88	
08/08/2021	07:00:25	214	4.5	11.85	
08/08/2021	07:01:00	214	4.3	11.86	
08/08/2021	07:02:10	260	4.5	11.96	
08/08/2021	07:02:45	282	4.5	11.98	
08/08/2021	07:03:20	237	4.5	11.86	
08/08/2021	07:03:55	245	4.5	11.86	
08/08/2021	07:04:00	236	4.5	11.86	End Lead Slurry
08/08/2021	07:04:30	238	4.5	12.67	
08/08/2021	07:05:05	246	4.5	13.01	
08/08/2021	07:05:30	240	4.5	13.42	Start Mixing Tail Slurry
08/08/2021	07:05:40	239	4.5	13.47	
08/08/2021	07:06:15	306	5.2	13.38	
08/08/2021	07:06:50	328	5.2	13.48	
08/08/2021	07:07:25	280	5.2	13.49	
08/08/2021	07:08:00	305	5.2	13.51	
08/08/2021	07:08:35	301	5.2	13.50	
08/08/2021	07:09:10	332	5.2	13.50	
08/08/2021	07:09:45	275	5.2	13.51	
08/08/2021	07:10:20	272	5.2	13.44	
08/08/2021	07:10:22	265	5.2	13.41	Tail Scale 13.5 ppg
08/08/2021	07:10:55	281	5.2	13.47	
08/08/2021	07:11:30	318	5.2	13.47	
08/08/2021	07:12:05	267	5.2	13.40	
08/08/2021	07:12:40	249	5.2	13.34	
08/08/2021	07:13:15	283	5.2	13.37	
08/08/2021	07:13:50	268	5.2	13.40	
08/08/2021	07:14:25	288	5.2	13.50	
08/08/2021	07:15:00	253	5.2	13.49	
08/08/2021	07:15:35	396	5.2	13.45	
08/08/2021	07:16:10	262	5.2	13.49	
08/08/2021	07:16:45	316	5.2	13.54	
08/08/2021	07:17:20	279	5.2	13.55	
08/08/2021	07:17:55	314	5.2	13.55	
08/08/2021	07:18:30	310	5.2	13.53	
08/08/2021	07:19:05	305	5.2	13.51	
08/08/2021	07:19:40	264	5.2	13.50	
08/08/2021	07:20:15	317	5.2	13.50	
08/08/2021	07:20:50	312	5.2	13.50	
08/08/2021	07:21:25	275	5.2	13.49	
08/08/2021	07:22:00	286	5.2	13.56	
08/08/2021	07:22:35	326	5.2	13.52	
08/08/2021	07:23:10	318	5.2	13.48	
08/08/2021	07:23:45	271	5.2	13.46	
08/08/2021	07:24:20	275	5.2	13.48	
08/08/2021	07:24:55	282	5.2	13.43	
08/08/2021	07:25:30	217	4.6	13.40	
08/08/2021	07:26:05	222	4.6	13.32	
08/08/2021	07:26:40	222	4.6	13.33	
08/08/2021	07:27:15	216	4.6	13.38	
08/08/2021	07:27:50	222	4.6	13.55	
08/08/2021	07:28:25	223	4.5	13.61	
08/08/2021	07:29:00	229	4.6	13.57	

Well		Field	Job Start	Customer	Job Number
Bake 11-22HZ		Wattenberg	Aug/08/2021	Oxy	EAJ7-02408
Date	Time 24-hr clock	PRESSURE PSI	RATE B/M	DENSITY LB/G	Message
08/08/2021	07:30:10	222	4.6	13.51	
08/08/2021	07:31:20	235	4.5	13.56	
08/08/2021	07:31:55	212	4.5	13.51	
08/08/2021	07:32:30	204	4.5	13.43	
08/08/2021	07:33:05	202	4.5	13.39	
08/08/2021	07:33:40	254	4.4	13.37	
08/08/2021	07:34:15	198	4.6	13.37	
08/08/2021	07:34:50	205	4.5	13.34	
08/08/2021	07:35:25	206	4.6	13.28	
08/08/2021	07:36:00	205	4.6	13.46	
08/08/2021	07:36:35	221	4.5	13.67	
08/08/2021	07:37:10	200	4.5	13.51	
08/08/2021	07:37:45	220	4.5	13.48	
08/08/2021	07:38:20	218	4.6	13.43	
08/08/2021	07:38:35	216	4.5	13.41	281 bbl; 959 sacks
08/08/2021	07:38:38	207	4.5	13.40	1.64 cuft/sk; 7.92 gal/sk
08/08/2021	07:38:40	213	4.5	13.40	Top of Tail = 9000 ft
08/08/2021	07:38:55	212	4.5	13.37	
08/08/2021	07:39:30	200	4.5	13.31	
08/08/2021	07:40:05	202	4.5	13.29	
08/08/2021	07:40:40	201	4.5	13.31	
08/08/2021	07:41:15	188	4.5	13.36	
08/08/2021	07:41:50	211	4.5	13.39	
08/08/2021	07:42:25	206	4.5	13.41	
08/08/2021	07:43:00	224	4.5	13.42	
08/08/2021	07:43:35	224	4.5	13.44	
08/08/2021	07:44:10	230	4.5	13.46	
08/08/2021	07:44:45	219	4.5	13.48	
08/08/2021	07:45:20	230	4.5	13.50	
08/08/2021	07:45:55	290	5.2	13.52	
08/08/2021	07:46:30	291	5.2	13.53	
08/08/2021	07:47:05	308	5.2	13.54	
08/08/2021	07:47:40	257	5.2	13.57	
08/08/2021	07:48:15	305	5.2	13.60	
08/08/2021	07:48:50	302	5.2	13.62	
08/08/2021	07:49:25	296	5.2	13.62	
08/08/2021	07:50:00	264	5.2	13.60	
08/08/2021	07:50:35	320	5.2	13.58	
08/08/2021	07:51:10	293	5.2	13.56	
08/08/2021	07:51:45	279	5.2	13.53	
08/08/2021	07:52:20	274	5.2	13.52	
08/08/2021	07:52:55	311	5.2	13.50	
08/08/2021	07:53:30	286	5.2	13.48	
08/08/2021	07:54:05	267	5.2	13.46	
08/08/2021	07:54:40	264	5.2	13.45	
08/08/2021	07:55:15	272	5.2	13.44	
08/08/2021	07:55:50	316	5.2	13.44	
08/08/2021	07:56:25	270	5.2	13.43	
08/08/2021	07:57:00	270	5.2	13.43	
08/08/2021	07:57:35	265	5.2	13.42	
08/08/2021	07:58:10	316	5.2	13.41	
08/08/2021	07:58:45	275	5.2	13.40	
08/08/2021	07:59:20	273	5.2	13.40	
08/08/2021	07:59:55	280	5.2	13.39	

Well		Field	Job Start	Customer	Job Number
Bake 11-22HZ		Wattenberg	Aug/08/2021	Oxy	EAJ7-02408
Date	Time 24-hr clock	PRESSURE PSI	RATE B/M	DENSITY LB/G	Message
08/08/2021	08:01:05	262	5.2	13.21	
08/08/2021	08:01:40	276	5.2	13.39	
08/08/2021	08:02:03	140	5.1	13.38	End Tail Slurry
08/08/2021	08:02:15	13	0.1	13.44	
08/08/2021	08:02:50	7	0.0	13.44	
08/08/2021	08:03:25	12	0.0	13.43	
08/08/2021	08:04:00	12	0.0	13.43	
08/08/2021	08:04:35	12	0.0	13.43	
08/08/2021	08:05:10	12	0.0	13.43	
08/08/2021	08:05:45	11	0.0	13.43	
08/08/2021	08:06:20	11	0.0	13.40	
08/08/2021	08:06:55	11	0.0	13.25	
08/08/2021	08:08:05	11	0.0	9.35	
08/08/2021	08:08:40	11	0.0	9.54	
08/08/2021	08:09:15	11	0.0	9.41	
08/08/2021	08:09:50	118	0.1	8.58	
08/08/2021	08:10:25	312	4.6	9.61	
08/08/2021	08:11:00	311	4.6	9.47	
08/08/2021	08:11:21	305	4.6	9.33	Washup
08/08/2021	08:11:35	290	4.6	9.04	
08/08/2021	08:12:10	276	4.5	8.41	
08/08/2021	08:12:45	279	4.5	8.42	
08/08/2021	08:13:20	274	4.5	8.43	
08/08/2021	08:13:55	58	2.1	8.37	
08/08/2021	08:14:30	63	2.1	8.39	
08/08/2021	08:15:05	64	2.2	8.40	
08/08/2021	08:15:40	64	2.2	8.39	
08/08/2021	08:16:15	89	0.0	8.41	
08/08/2021	08:16:50	90	0.0	8.40	
08/08/2021	08:17:25	-3	0.0	8.40	
08/08/2021	08:17:28	-3	0.0	8.40	Drop Top Plug
08/08/2021	08:18:00	-1	0.0	8.40	
08/08/2021	08:18:35	1	0.0	8.40	
08/08/2021	08:19:10	1	0.0	8.49	
08/08/2021	08:19:45	125	1.5	8.47	
08/08/2021	08:20:09	182	5.6	8.47	Start Displacement
08/08/2021	08:20:20	174	6.4	8.47	
08/08/2021	08:20:55	163	6.4	8.46	
08/08/2021	08:21:30	172	6.4	8.42	
08/08/2021	08:22:05	153	6.4	8.40	
08/08/2021	08:22:40	150	6.4	8.40	
08/08/2021	08:23:15	141	6.5	8.40	
08/08/2021	08:23:50	140	6.4	8.41	
08/08/2021	08:24:25	163	6.4	8.40	
08/08/2021	08:25:00	156	6.5	8.40	
08/08/2021	08:25:35	136	6.5	8.40	
08/08/2021	08:26:10	150	6.5	8.40	
08/08/2021	08:26:45	162	6.5	8.40	
08/08/2021	08:27:20	669	6.4	8.40	
08/08/2021	08:27:55	683	6.4	8.40	
08/08/2021	08:28:30	749	6.4	8.40	
08/08/2021	08:29:05	780	6.4	8.40	
08/08/2021	08:29:40	794	6.4	8.40	
08/08/2021	08:30:15	785	6.4	8.40	

Well		Field	Job Start	Customer	Job Number
Bake 11-22HZ		Wattenberg	Aug/08/2021	Oxy	EAJ7-02408
Date	Time 24-hr clock	PRESSURE PSI	RATE B/M	DENSITY LB/G	Message
08/08/2021	08:31:25	914	6.4	8.40	
08/08/2021	08:32:00	911	6.3	8.40	
08/08/2021	08:32:35	939	6.4	8.40	
08/08/2021	08:33:10	1036	6.3	8.40	
08/08/2021	08:33:45	1056	6.3	8.40	
08/08/2021	08:34:20	1031	6.3	8.40	
08/08/2021	08:34:55	1078	6.3	8.40	
08/08/2021	08:35:30	1180	6.3	8.40	
08/08/2021	08:36:05	1183	6.3	8.40	
08/08/2021	08:37:15	1263	6.3	8.40	
08/08/2021	08:37:50	1308	6.3	8.40	
08/08/2021	08:38:25	1322	6.3	8.40	
08/08/2021	08:39:00	1371	6.3	8.40	
08/08/2021	08:39:35	1448	6.3	8.40	
08/08/2021	08:40:10	1526	6.3	8.40	
08/08/2021	08:40:45	1505	6.3	8.40	
08/08/2021	08:41:20	1524	6.3	8.40	
08/08/2021	08:41:55	1633	6.3	8.40	
08/08/2021	08:42:30	1659	6.2	8.44	
08/08/2021	08:43:05	1645	6.2	8.40	
08/08/2021	08:43:40	1698	6.4	8.40	
08/08/2021	08:44:15	1795	6.3	8.39	
08/08/2021	08:44:50	1838	6.3	8.40	
08/08/2021	08:45:25	1873	6.3	8.40	
08/08/2021	08:46:00	1911	6.3	8.40	
08/08/2021	08:46:35	1941	6.3	8.40	
08/08/2021	08:47:10	1954	6.3	8.39	
08/08/2021	08:47:45	1966	6.3	8.40	
08/08/2021	08:48:20	2002	6.3	8.40	
08/08/2021	08:48:55	2005	6.3	8.40	
08/08/2021	08:49:30	1979	6.3	8.40	
08/08/2021	08:50:05	1948	6.3	8.40	
08/08/2021	08:50:40	2028	6.3	8.40	
08/08/2021	08:51:15	2024	6.3	8.40	
08/08/2021	08:51:50	2045	6.3	8.40	
08/08/2021	08:52:25	1967	6.3	8.40	
08/08/2021	08:53:00	1989	6.3	8.40	
08/08/2021	08:53:35	2051	6.3	8.40	
08/08/2021	08:54:10	2059	6.3	8.40	
08/08/2021	08:54:45	1991	6.3	8.40	
08/08/2021	08:55:20	2001	6.3	8.40	
08/08/2021	08:55:55	2083	6.3	8.40	
08/08/2021	08:56:30	2069	6.3	8.40	
08/08/2021	08:57:05	2030	6.3	8.40	
08/08/2021	08:57:40	2033	6.3	8.40	
08/08/2021	08:58:15	2096	6.3	8.40	
08/08/2021	08:58:50	2093	6.3	8.40	
08/08/2021	08:59:25	2102	6.3	8.40	
08/08/2021	09:00:00	2076	6.3	8.40	
08/08/2021	09:00:35	2148	6.3	8.40	
08/08/2021	09:01:10	1899	5.1	8.40	
08/08/2021	09:01:45	1878	5.1	8.40	
08/08/2021	09:02:20	1904	5.1	8.40	
08/08/2021	09:02:55	1944	5.1	8.40	

Well		Field	Job Start	Customer	Job Number
Bake 11-22HZ		Wattenberg	Aug/08/2021	Oxy	EAJ7-02408
Date	Time 24-hr clock	PRESSURE PSI	RATE B/M	DENSITY LB/G	Message
08/08/2021	09:04:05	1905	5.1	8.40	
08/08/2021	09:04:40	1915	5.1	8.40	
08/08/2021	09:05:15	1938	5.1	8.40	
08/08/2021	09:05:50	1978	5.1	8.39	
08/08/2021	09:06:25	1932	5.1	8.39	
08/08/2021	09:07:00	1934	5.1	8.40	
08/08/2021	09:07:35	1939	5.1	8.40	
08/08/2021	09:08:10	2000	5.1	8.40	
08/08/2021	09:08:45	1990	5.1	8.40	
08/08/2021	09:09:20	1949	5.1	8.40	
08/08/2021	09:09:55	1808	4.4	8.40	
08/08/2021	09:10:30	1833	4.1	8.40	
08/08/2021	09:11:05	1849	4.2	8.40	
08/08/2021	09:11:40	1882	4.2	8.40	
08/08/2021	09:12:15	1759	4.2	8.39	
08/08/2021	09:12:50	1914	4.2	8.39	
08/08/2021	09:14:00	1792	4.2	8.40	
08/08/2021	09:14:35	1935	4.2	8.40	
08/08/2021	09:15:10	1754	4.2	8.40	
08/08/2021	09:15:45	1860	4.2	8.40	
08/08/2021	09:16:20	1873	4.2	8.40	
08/08/2021	09:16:55	1764	4.2	8.39	
08/08/2021	09:17:30	1917	4.2	8.39	
08/08/2021	09:18:05	1827	4.2	8.40	
08/08/2021	09:18:40	1824	4.2	8.40	
08/08/2021	09:19:15	1919	4.2	8.39	
08/08/2021	09:19:50	1805	4.2	8.40	
08/08/2021	09:20:25	1873	4.2	8.40	
08/08/2021	09:21:00	1865	4.2	8.40	
08/08/2021	09:21:35	1831	4.2	8.40	
08/08/2021	09:22:10	1882	4.2	8.39	
08/08/2021	09:22:45	1836	4.2	8.40	
08/08/2021	09:23:20	1850	4.2	8.40	
08/08/2021	09:23:55	1887	4.2	8.40	
08/08/2021	09:24:30	1852	4.2	8.40	
08/08/2021	09:25:05	1885	4.2	8.40	
08/08/2021	09:25:40	1859	4.2	8.40	
08/08/2021	09:26:15	1862	4.2	8.40	
08/08/2021	09:26:50	1885	4.2	8.40	
08/08/2021	09:27:25	1855	4.2	8.40	
08/08/2021	09:28:00	1877	4.2	8.40	
08/08/2021	09:28:35	1849	4.2	8.40	
08/08/2021	09:29:10	1869	4.2	8.40	
08/08/2021	09:29:45	1835	4.2	8.40	
08/08/2021	09:30:20	1840	4.2	8.40	
08/08/2021	09:30:55	1876	4.2	8.40	
08/08/2021	09:31:30	1847	4.2	8.40	
08/08/2021	09:32:05	1859	4.2	8.40	
08/08/2021	09:32:40	1773	3.2	8.39	
08/08/2021	09:33:15	1702	3.2	8.39	
08/08/2021	09:33:50	1705	3.2	8.39	
08/08/2021	09:34:25	1758	3.2	8.40	
08/08/2021	09:35:00	1736	3.2	8.39	
08/08/2021	09:35:35	1689	3.2	8.40	

Well		Field	Job Start	Customer	Job Number
Bake 11-22HZ		Wattenberg	Aug/08/2021	Oxy	EAJ7-02408
Date	Time 24-hr clock	PRESSURE PSI	RATE B/M	DENSITY LB/G	Message
08/08/2021	09:36:10	2224	3.2	8.40	
08/08/2021	09:36:16	2474	2.1	8.39	End Displacement; 411.5 bbl
08/08/2021	09:36:45	2517	0.0	8.40	
08/08/2021	09:37:20	2431	0.0	8.40	
08/08/2021	09:37:55	3024	0.0	8.39	
08/08/2021	09:38:05	3095	0.0	8.39	Casing Test
08/08/2021	09:38:13	3023	0.0	8.39	0 bbl Spacer to Surface
08/08/2021	09:38:24	3002	0.0	8.40	Verify Washup
08/08/2021	09:38:30	2982	0.0	8.39	
08/08/2021	09:39:05	3029	0.0	8.39	
08/08/2021	09:39:40	3056	0.0	8.39	
08/08/2021	09:40:15	3046	0.0	8.39	
08/08/2021	09:40:50	3069	0.0	8.39	
08/08/2021	09:41:25	3089	0.0	8.40	
08/08/2021	09:42:00	3099	0.0	8.40	
08/08/2021	09:42:35	3110	0.0	8.40	
08/08/2021	09:43:10	3128	0.0	8.39	
08/08/2021	09:43:45	3141	0.0	8.40	
08/08/2021	09:44:20	3153	0.0	8.40	
08/08/2021	09:44:55	3166	0.0	8.40	
08/08/2021	09:45:30	3180	0.0	8.40	
08/08/2021	09:46:05	3191	0.0	8.40	
08/08/2021	09:46:40	3203	0.0	8.40	
08/08/2021	09:47:15	3215	0.0	8.40	
08/08/2021	09:47:50	3227	0.0	8.40	
08/08/2021	09:48:25	3238	0.0	8.40	
08/08/2021	09:49:00	3249	0.0	8.40	
08/08/2021	09:49:35	3260	0.0	8.40	
08/08/2021	09:50:10	3272	0.0	8.40	
08/08/2021	09:50:45	3282	0.0	8.40	
08/08/2021	09:51:20	3293	0.0	8.40	
08/08/2021	09:51:55	3303	0.0	8.40	
08/08/2021	09:52:30	3314	0.0	8.40	
08/08/2021	09:53:05	3323	0.0	8.40	
08/08/2021	09:53:40	3964	2.2	8.39	
08/08/2021	09:53:52	2909	2.2	8.39	WSS @ 4200 psi
08/08/2021	09:54:15	1525	2.2	8.40	
08/08/2021	09:54:50	1533	2.2	8.39	
08/08/2021	09:55:00	1558	2.2	8.40	3 bbl Wet Shoe
08/08/2021	09:55:16	1483	1.3	8.40	Check Floats; 2 bbl Back
08/08/2021	09:55:25	1375	0.0	8.40	
08/08/2021	09:56:00	1312	0.0	8.40	
08/08/2021	09:56:35	1082	0.0	8.40	
08/08/2021	09:57:10	-1	0.0	8.40	
08/08/2021	09:57:45	1	0.0	8.40	
08/08/2021	09:58:20	74	0.0	8.40	
08/08/2021	09:58:55	-1	0.0	8.40	
08/08/2021	09:59:30	64	3.1	8.39	
08/08/2021	10:00:05	62	3.3	8.39	
08/08/2021	10:00:40	59	3.3	8.39	
08/08/2021	10:01:15	58	3.3	8.39	
08/08/2021	10:01:50	4	0.7	8.65	
08/08/2021	10:02:25	3	0.3	8.64	
08/08/2021	10:03:00	3	0.0	8.51	

Well		Field		Job Start		Customer		Job Number	
Bake 11-22HZ		Wattenberg		Aug/08/2021		Oxy		EAJ7-02408	
Date	Time 24-hr clock	PRESSURE PSI	RATE B/M	DENSITY LB/G	Message				
08/08/2021	10:04:10	12	4.6	4.21					
08/08/2021	10:04:45	9	0.0	1.45					
08/08/2021	10:05:20	3	0.0	0.11					
08/08/2021	10:05:55	26	0.0	0.11					
08/08/2021	10:06:30	24	0.0	0.10					
08/08/2021	10:07:05	25	0.0	0.12					
08/08/2021	10:07:40	24	0.0	0.11					
08/08/2021	10:08:15	25	0.0	0.10					
08/08/2021	10:08:50	25	0.0	0.10					
08/08/2021	10:09:25	26	0.0	0.09					
08/08/2021	10:10:00	25	0.0	0.09					
08/08/2021	10:10:35	26	0.0	0.09					
08/08/2021	10:11:10	26	0.0	0.08					
08/08/2021	10:11:45	26	0.0	0.08					
08/08/2021	10:12:20	26	0.0	0.09					
08/08/2021	10:12:55	25	0.0	0.09					
08/08/2021	10:13:30	26	0.0	0.11					
08/08/2021	10:14:05	26	0.0	0.09					
08/08/2021	10:14:40	26	0.0	0.10					

Post Job Summary

Average Pump Rates, bbl/min				Volume of Fluid Injected, bbl			
Slurry	N2	Mud	Maximum Rate	Total Slurry	Mud	Spacer	N2
5.0			6.7	1025.1	0.0	89.6	
Treating Pressure Summary, psi				Breakdown Fluid			
Maximum	Final	Average	Bump Plug to	Breakdown	Type	Volume	Density
7507	26	946				bbl	lb/gal
Avg. N2 Percent	Designed Slurry Volume	Displacement	Mix Water Temp	Cement Circulated to Surface?	<input type="checkbox"/>	Volume	bbl
%	0.0 bbl	364.6 bbl	70 degF	Washed Thru Perfs	<input type="checkbox"/>	To	ft
Customer or Authorized Representative	Schlumberger Supervisor			Circulation Lost	<input type="checkbox"/>	Job Completed	<input checked="" type="checkbox"/>
Joe Wallem	Grayland Balmer			-		-	