

KTM Operating LLC, Craig 6-4 SWD
073-06391

Inspection #688311533

11/2/2021

Reinspection

KIM
OPERATING

1246 Bayou Lacarpe Rd.
Houma, LA 70363

Craig 6-4 SWD

SE NW Sec 4, T14S, R55W

2,326' FNL 2,111' FWL

Lincoln County, Colorado

API 05-073-06391

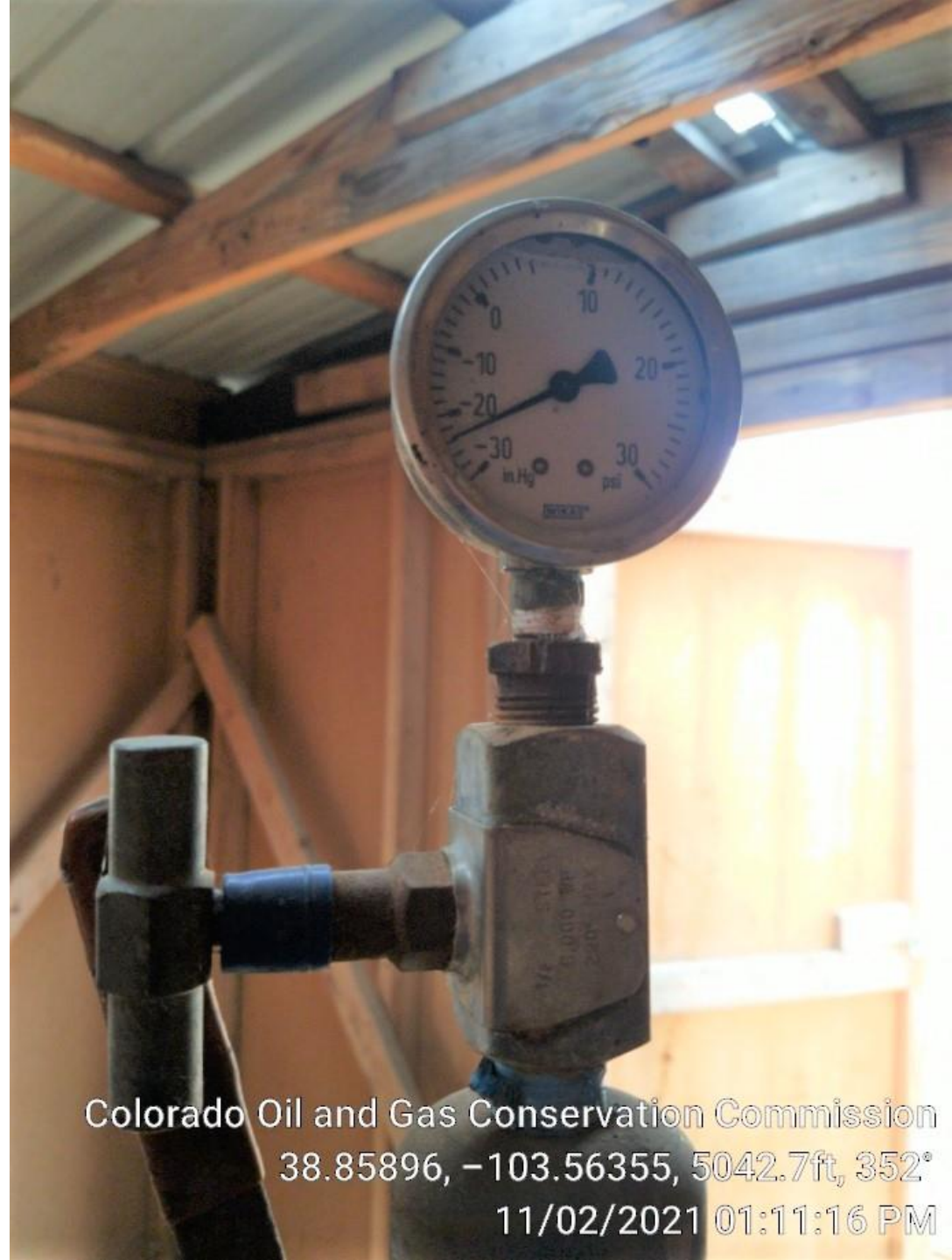
Colorado Oil and Gas Conservation Commission
38.85889, -103.56363, 5052.5ft, 28°
11/02/2021 01:10:15 PM



Colorado Oil and Gas Conservation Commission
38.85896, -103.56354, 5036.1ft, 14°
11/02/2021 01:13:28 PM



Colorado Oil and Gas Conservation Commission
38.85894, -103.56357, 5032.8ft, 272°
11/02/2021 01:10:56 PM



Colorado Oil and Gas Conservation Commission
38.85896, -103.56355, 5042.7ft, 352°
11/02/2021 01:11:16 PM



Colorado Oil and Gas Conservation Commission
38.85896, -103.56354, 5039.4ft, 345°
11/02/2021 01:11:23 PM



Colorado Oil and Gas Conservation Commission
38.85856, -103.56368, 5023.0ft, 60°
11/02/2021 01:06:29 PM



Colorado Oil and Gas Conservation Commission
38.85892, -103.56355, 5023.0ft, 158°
11/02/2021 01:14:19 PM



Colorado Oil and Gas Conservation Commission
38.85102, -103.56129, 5095.1ft, 222°
11/02/2021 01:04:10 PM