






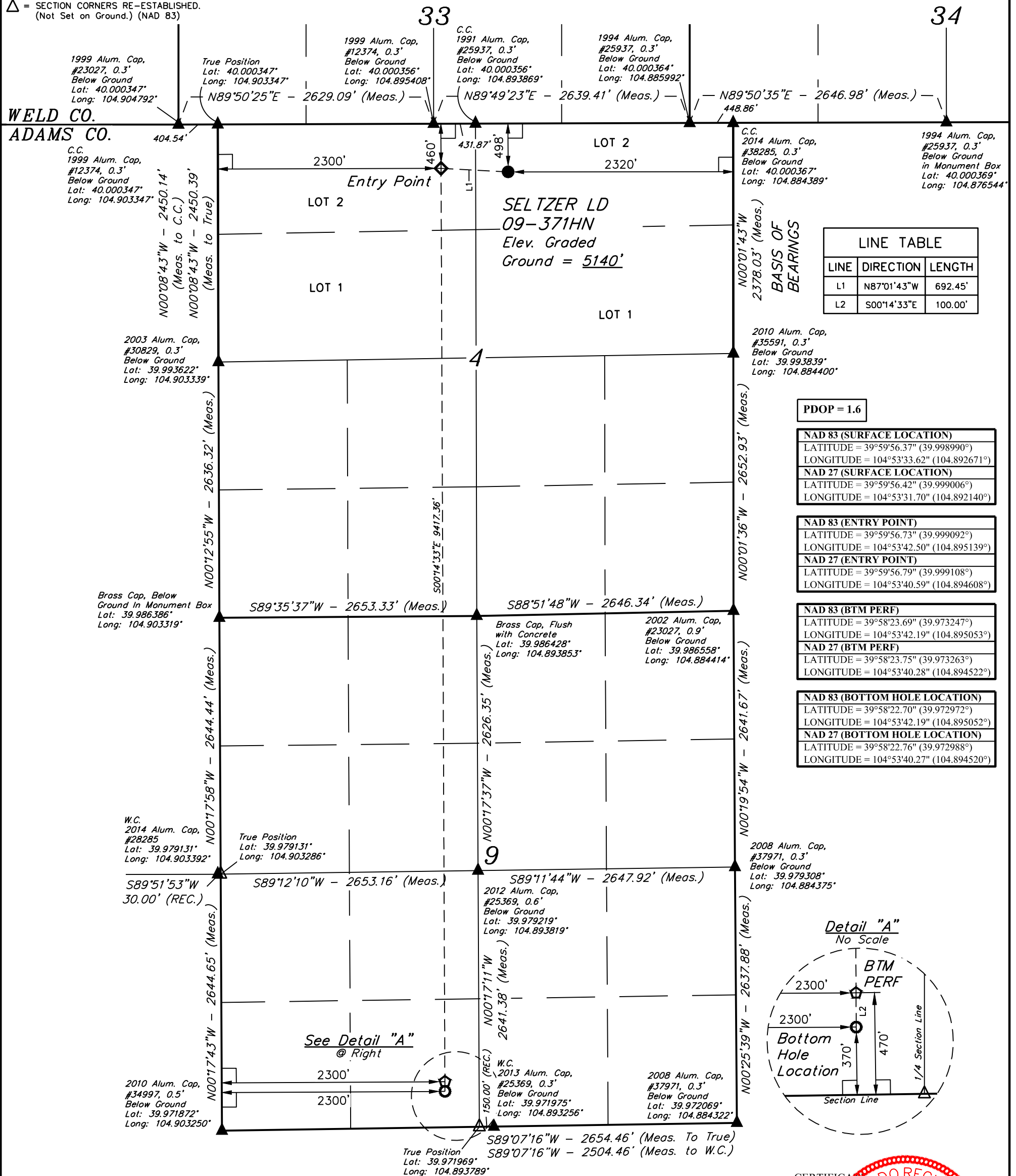


*T1S, R67W, 6th P.M.*

-  = 90° SYMBOL  
 = PROPOSED WELLHEAD.  
 = BOTTOM HOLE LOCATION.  
 = ENTRY POINT.  
 = BTM PERF.  
 = SECTION CORNERS LOCATED. (NAD 83)  
 = SECTION CORNERS RE-ESTABLISHED.  
 (Not Set on Ground.) (NAD 83)



| LINE TABLE |             |         |
|------------|-------------|---------|
| LINE       | DIRECTION   | LENGTH  |
| L1         | N87°01'43"W | 692.45' |
| L2         | S00°14'33"E | 100.00' |

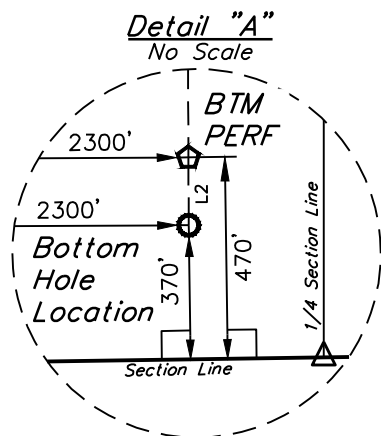
**PDOP = 1.6**

|   |
|---|
| <b>NAD 83 (SURFACE LOCATION)</b>        |
| LATITUDE = 39°59'56.37" (39.998990°)    |
| LONGITUDE = 104°53'33.62" (104.892671°) |
| <b>NAD 27 (SURFACE LOCATION)</b>        |
| LATITUDE = 39°59'56.42" (39.999006°)    |
| LONGITUDE = 104°53'31.70" (104.892140°) |

|   |
|---|
| <b>NAD 83 (ENTRY POINT)</b>             |
| LATITUDE = 39°59'56.73" (39.999092°)    |
| LONGITUDE = 104°53'42.50" (104.895139°) |
| <b>NAD 27 (ENTRY POINT)</b>             |
| LATITUDE = 39°59'56.79" (39.999108°)    |
| LONGITUDE = 104°53'40.59" (104.894608°) |

|   |
|---|
| <b>NAD 83 (BTM PERF)</b>                |
| LATITUDE = 39°58'23.69" (39.973247°)    |
| LONGITUDE = 104°53'42.19" (104.895053°) |
| <b>NAD 27 (BTM PERF)</b>                |
| LATITUDE = 39°58'23.75" (39.973263°)    |
| LONGITUDE = 104°53'40.28" (104.894522°) |

|   |
|---|
| <b>NAD 83 (BOTTOM HOLE LOCATION)</b>    |
| LATITUDE = 39°58'22.70" (39.972972°)    |
| LONGITUDE = 104°53'42.19" (104.895052°) |
| <b>NAD 27 (BOTTOM HOLE LOCATION)</b>    |
| LATITUDE = 39°58'22.76" (39.972988°)    |
| LONGITUDE = 104°53'40.27" (104.894520°) |



CERTIFICATE

THE ABOVE DEED WAS PREPARED FROM FIELD  
SURVEYS MADE IN ACCORDANCE WITH THE  
LAW UNDER MY SURVEY (1830)  
TRUE AND CORRECT TO THE BEST OF MY  
KNOWLEDGE

*John W. Smith*

REGISTERED LAND SURVEYOR  
REGISTRATION NO. 28285  
STATE OF COLORADO

1830-25-21

THIS IS TO CERTIFY THAT THE ABOVE MAP WAS PREPARED FROM FIELD NOTES OF ACTUAL SURVEYS MADE BY ME OR UNDER MY SUPERVISION, AND THAT THE SAME ARE TRUE AND CORRECT TO THE BEST OF MY KNOWLEDGE AND BELIEF.



REV: 16 10-25-21 T.L.L. (EP, BTM PERF &amp; BHL MOVES)

**GREAT WESTERN OPERATING COMPANY**

**SELTZER LD 09-371HN  
NW 1/4 NE 1/4, SECTION 4, T1S, R67W, 6th P.M.  
ADAMS COUNTY, COLORADO**

|                    |                        |          |              |
|--------------------|------------------------|----------|--------------|
| <b>SURVEYED BY</b> | JAMES FRESHWATER, N.W. | 04-19-18 | <b>SCALE</b> |
| <b>DRAWN BY</b>    | D.COX                  | 01-13-17 | 1" = 1000'   |

# WELL LOCATION PLAT

### BASIS OF ELEVATION

BENCHMARK JR 53 5026 LOCATED IN THE SW 1/4 SE 1/4 OF SECTION 18, T1N, R68W, 6th P.M., TAKEN FROM 1988 PUBLISHED DATUM BY THE UNITED STATES DEPARTMENT OF THE INTERIOR, GEOLOGICAL SURVEY AS BEING 5028 FEET.



**UELS, LLC**  
Corporate Office \* 85 South 200 East  
Vernal, UT 84078 \* (435) 789-1017

