

Interpretations are opinions based on inferences from electrical or other measurements and we cannot and do not guarantee the accuracy or correctness of any interpretation, and we shall not, except in the case of gross or willful negligence on our part, be liable or responsible for any loss, costs, damages, or expenses incurred sustained by anyone resulting from any interpretation made by any of our officers, agents or employees. These interpretations are also subject to our general terms and conditions set out in our current Price Schedule.

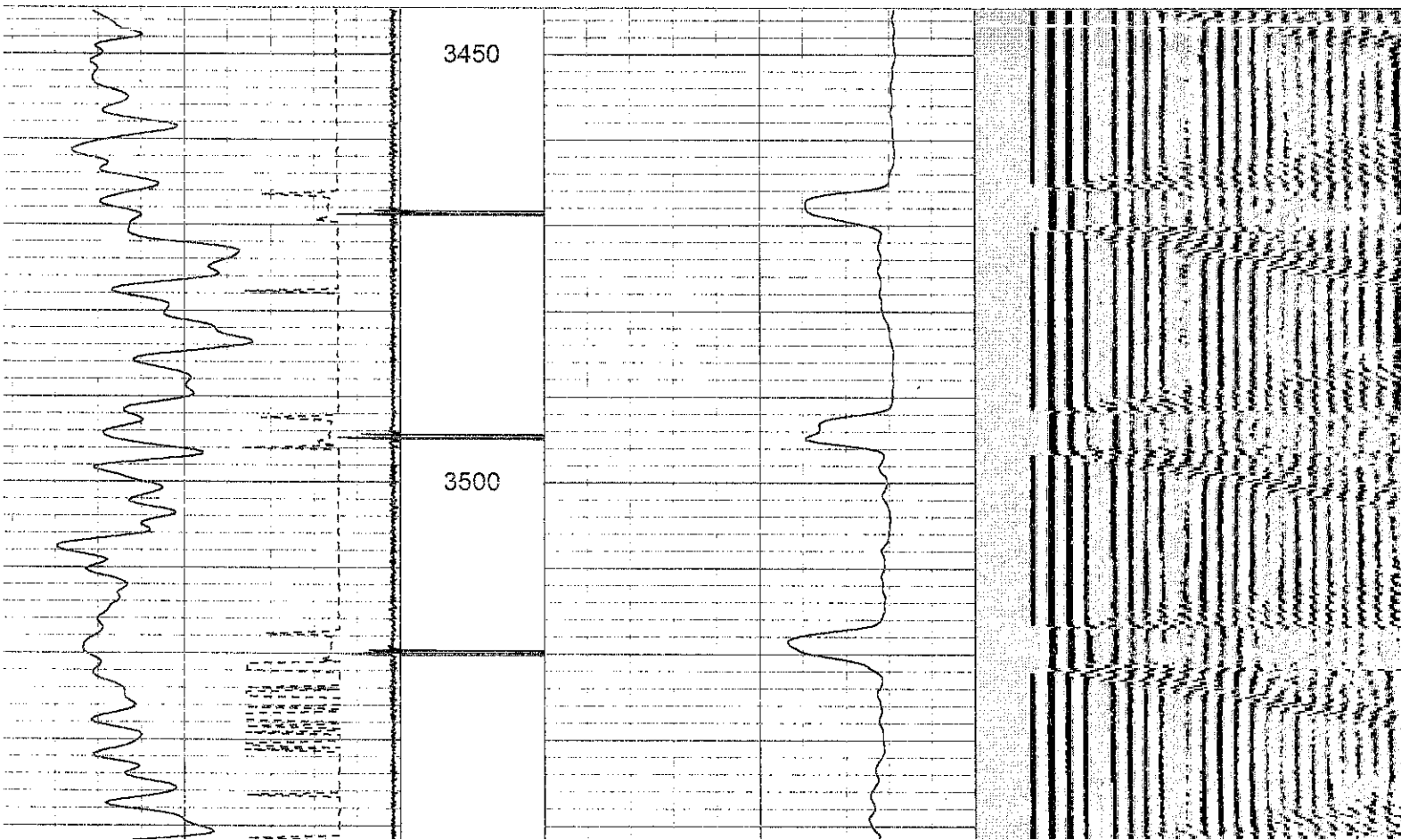
Comments

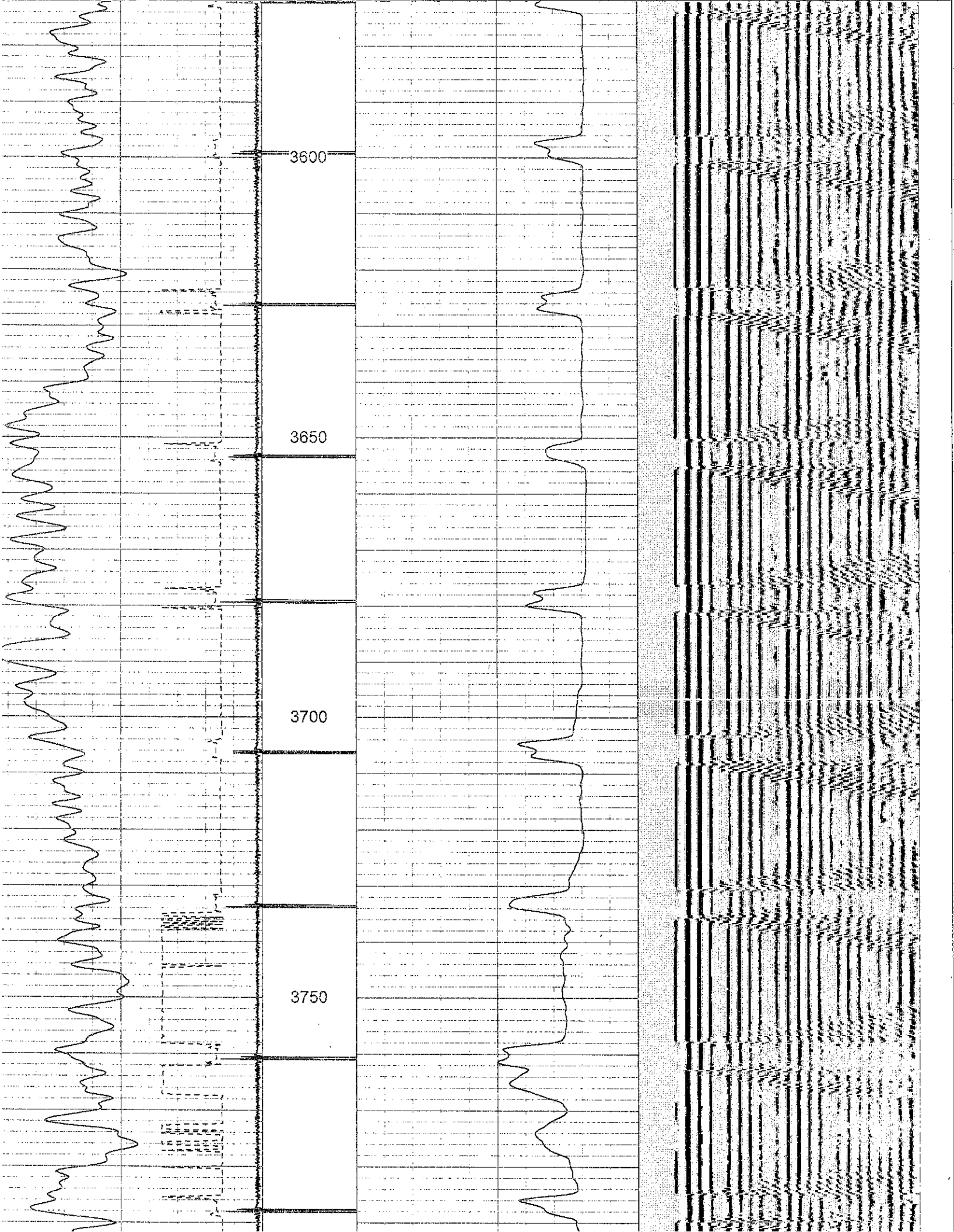
THANK YOU FOR USING SUPERIOR WELL SERVICES.

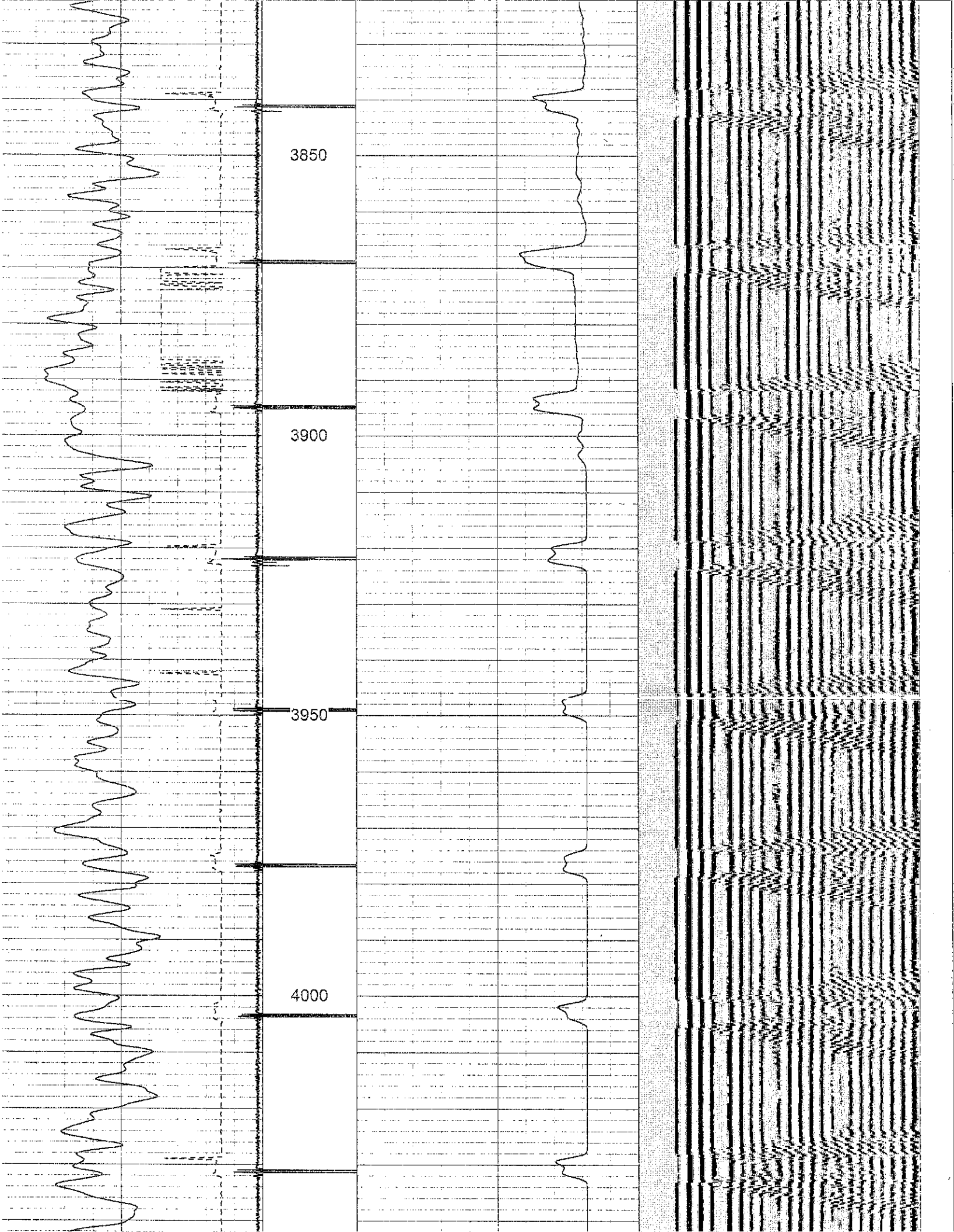
CORRECTED UP HOLE TO DRESSER ATLAS CEMENT BOND LOG
DATED 8-21-86.

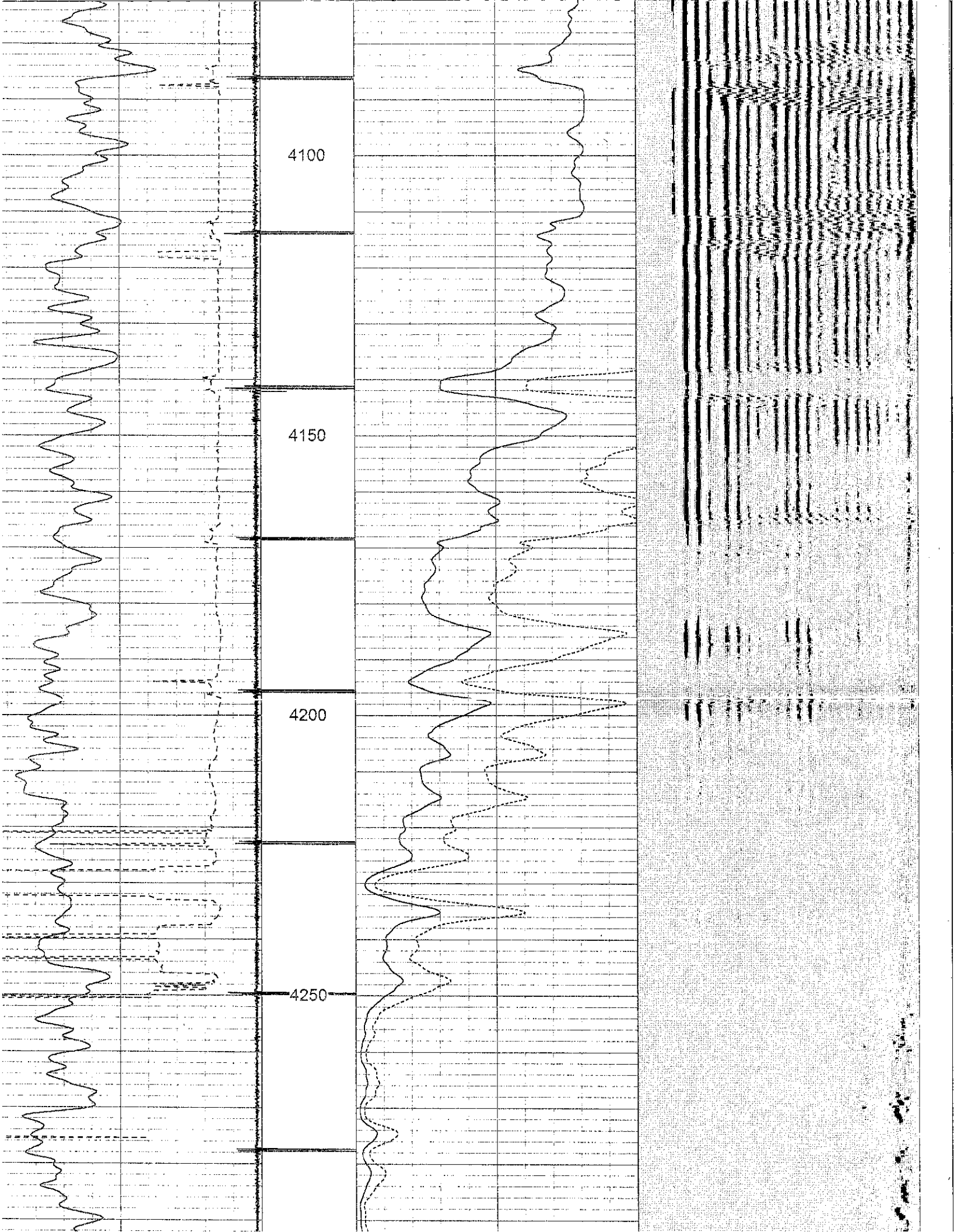
Database File: marie04-14cbl.db
Dataset Pathname: pass2
Presentation Format: cbl_sr
Dataset Creation: Fri Dec 09 07:57:55 2011 by Log Std Casedhole 10081
Charted by: Depth in Feet scaled 1:240

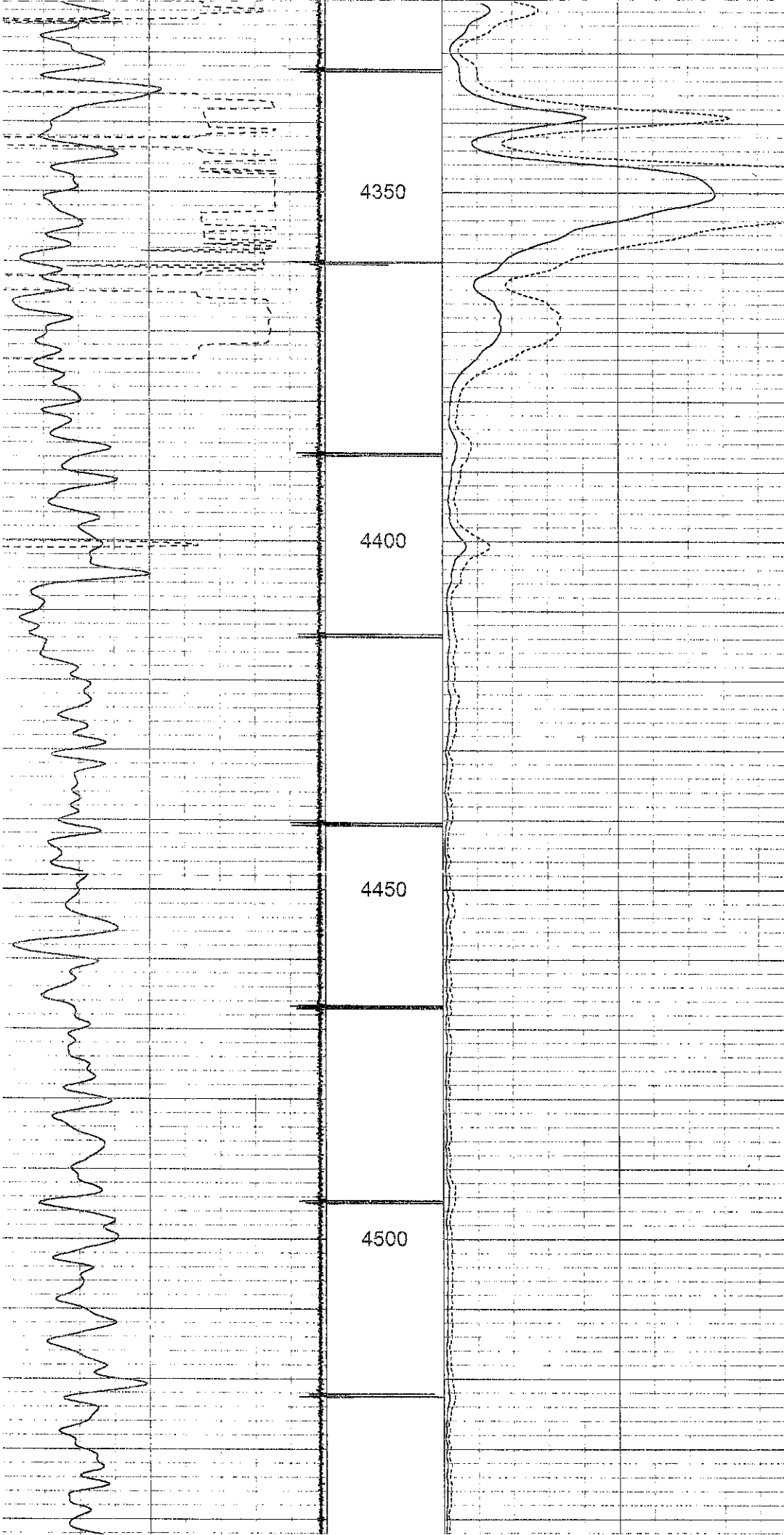
0	Travel Time (usec)	200	0.5 CCL	1 0	Amplitude (mV)	100 200	Variable Density	1200
	Collar Locator	-0.5						
	Gamma Ray (GAPI)	130						









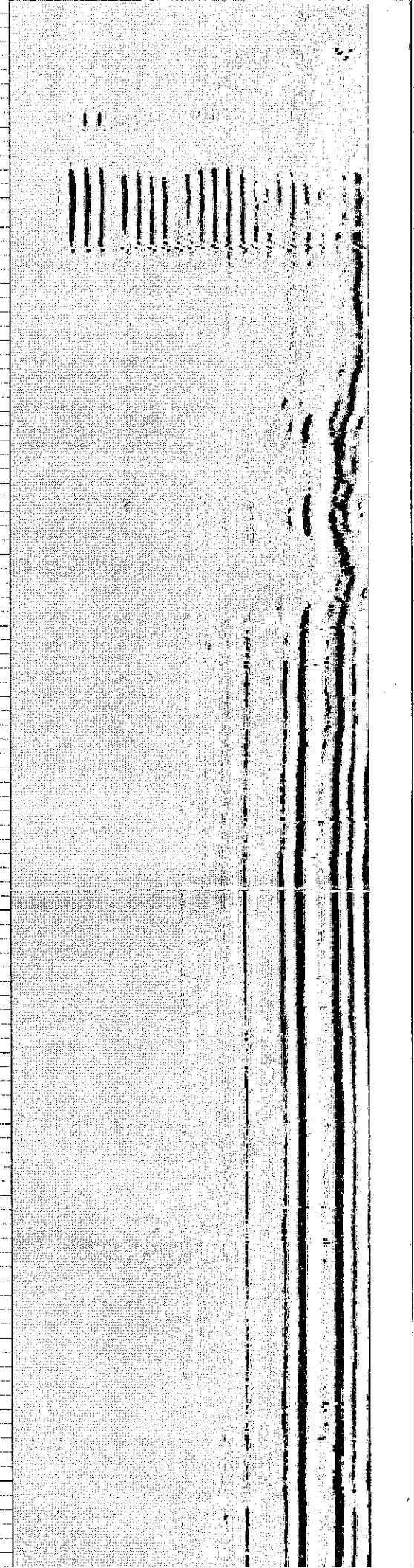


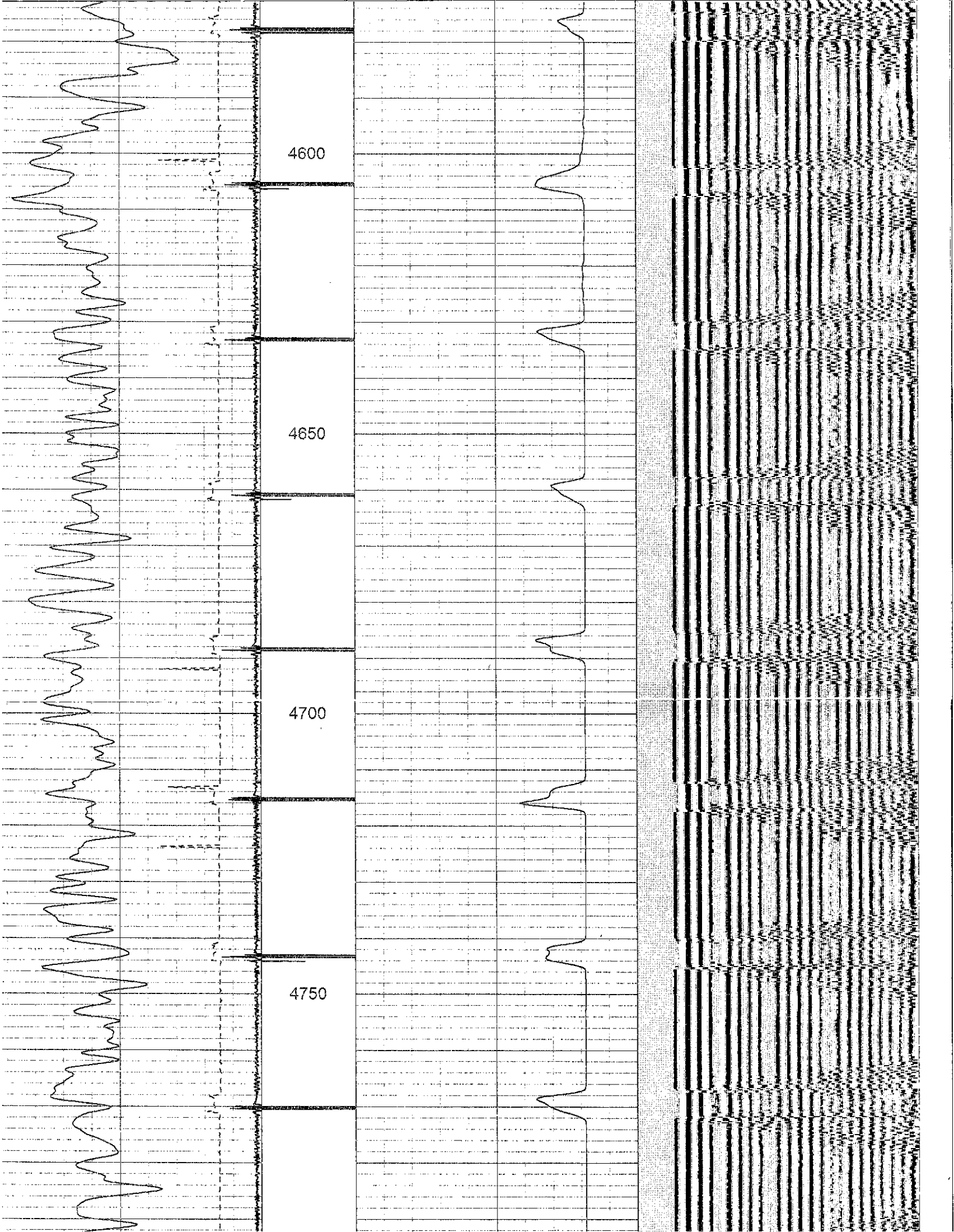
4350

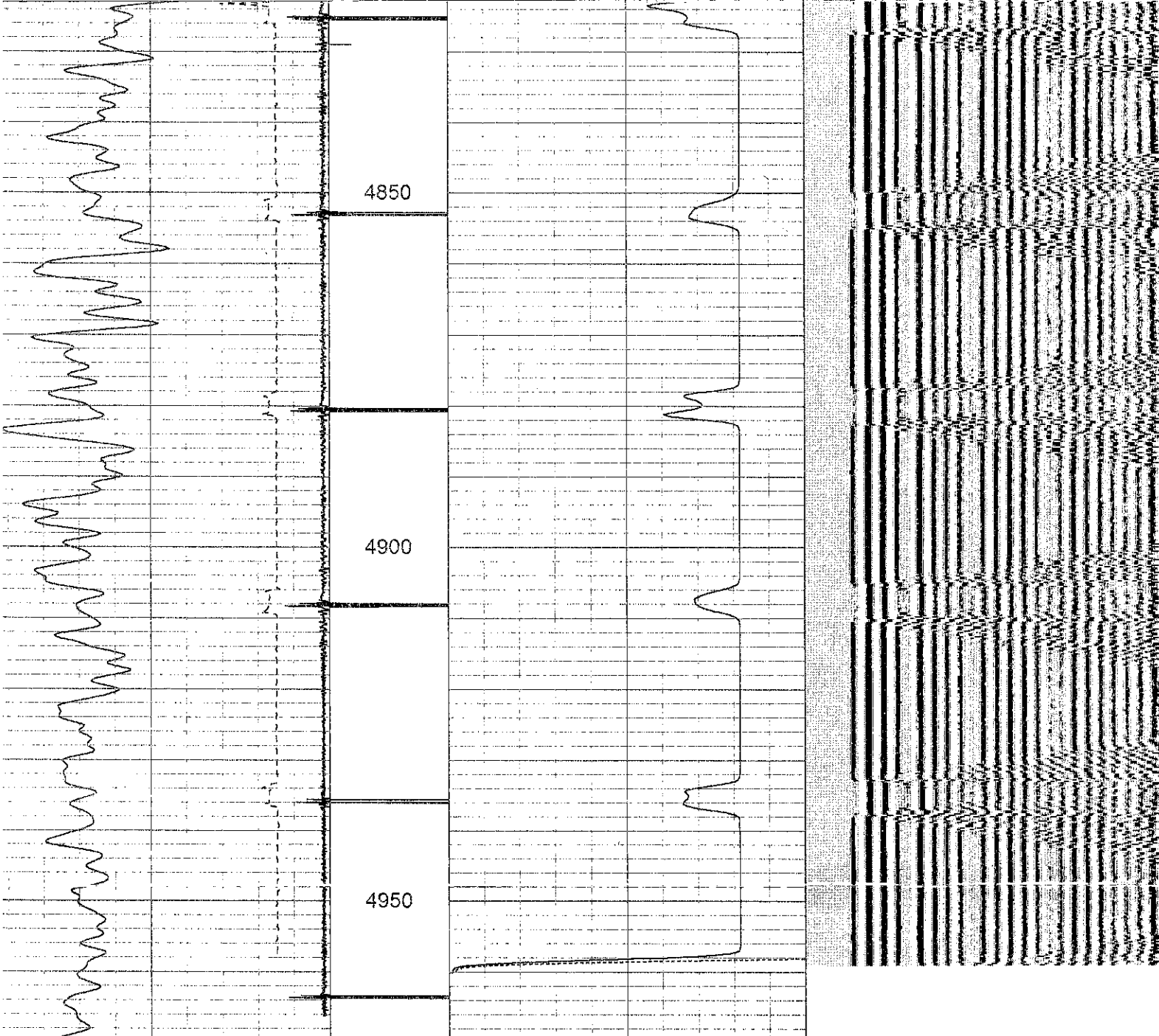
4400

4450

4500



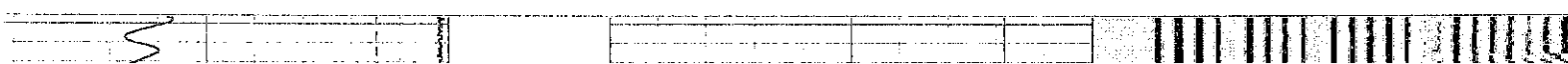


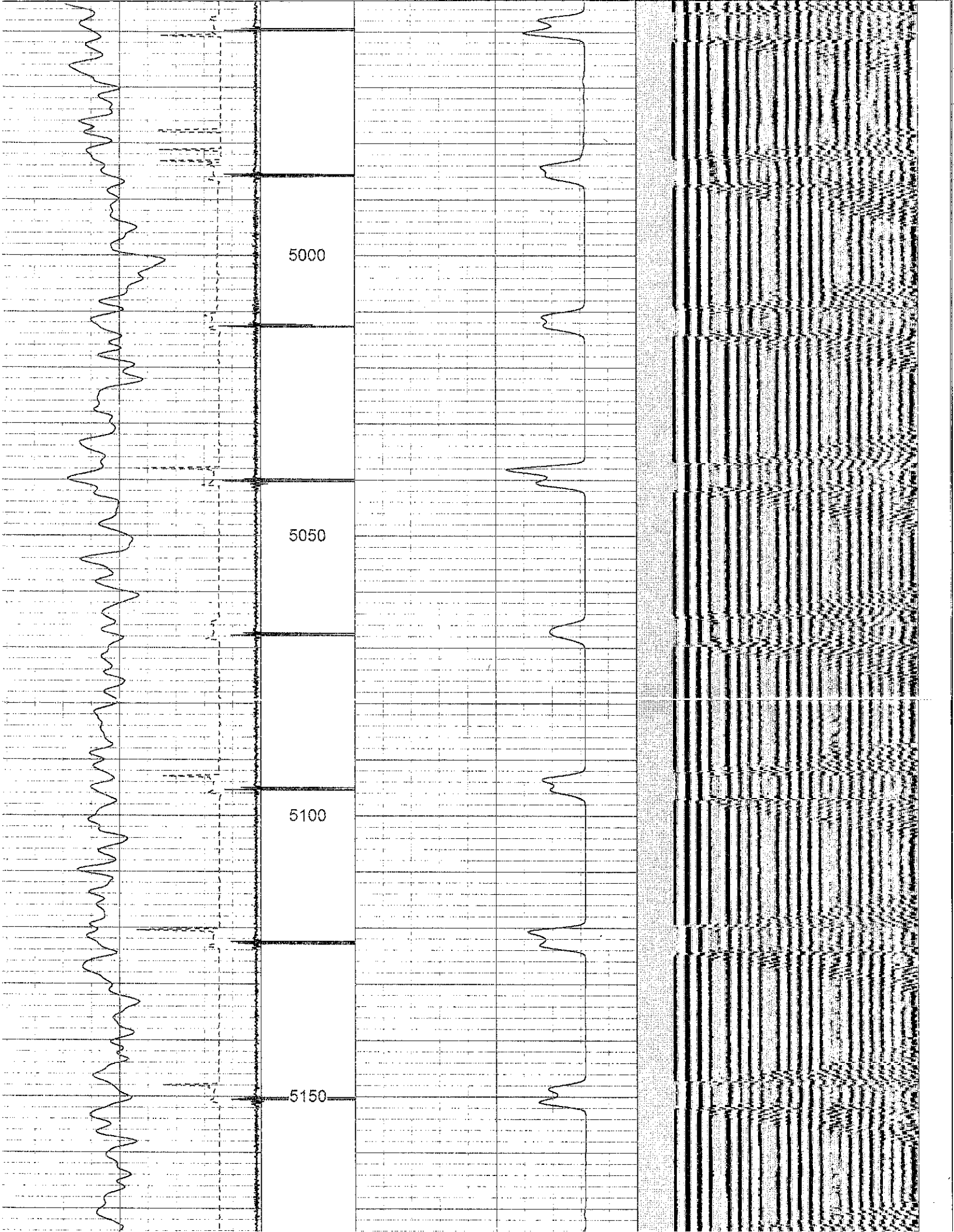


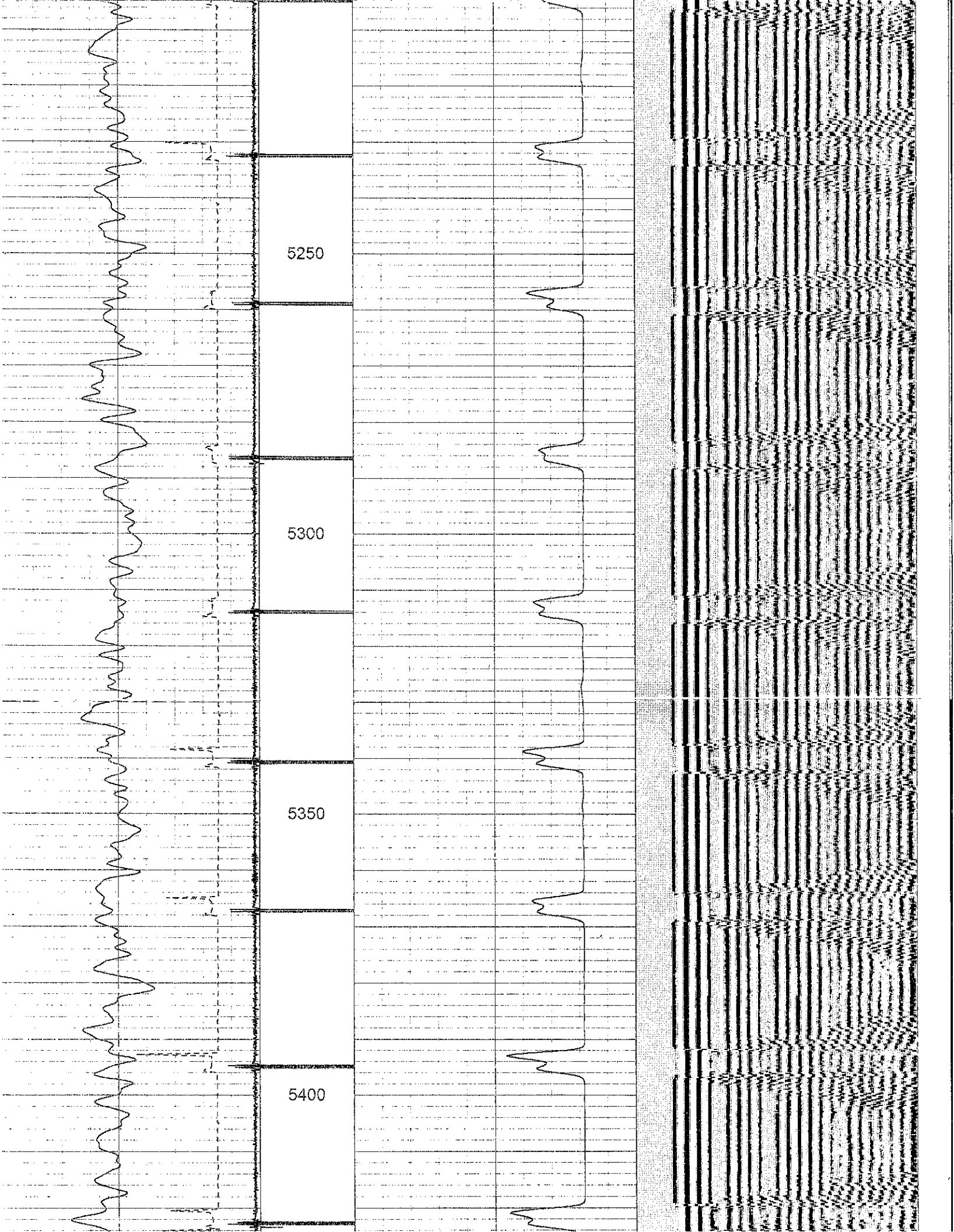
0	Travel Time (usec)	200	0.5 CCL	1	0	Amplitude (mV)	100	200	Variable Density	1200
	Collar Locator	-0.5								
	Gamma Ray (GAPI)	130								

Database File: marie04-14cbl.db
 Dataset Pathname: pass1
 Presentation Format: cbl_sr
 Dataset Creation: Fri Dec 09 07:42:06 2011 by Log Std Casedhole 10081
 Charted by: Depth in Feet scaled 1:240

0	Travel Time (usec)	200	0.5 CCL	1	0	Amplitude (mV)	100	200	Variable Density	1200
	Collar Locator	-0.5								
	Gamma Ray (GAPI)	200								





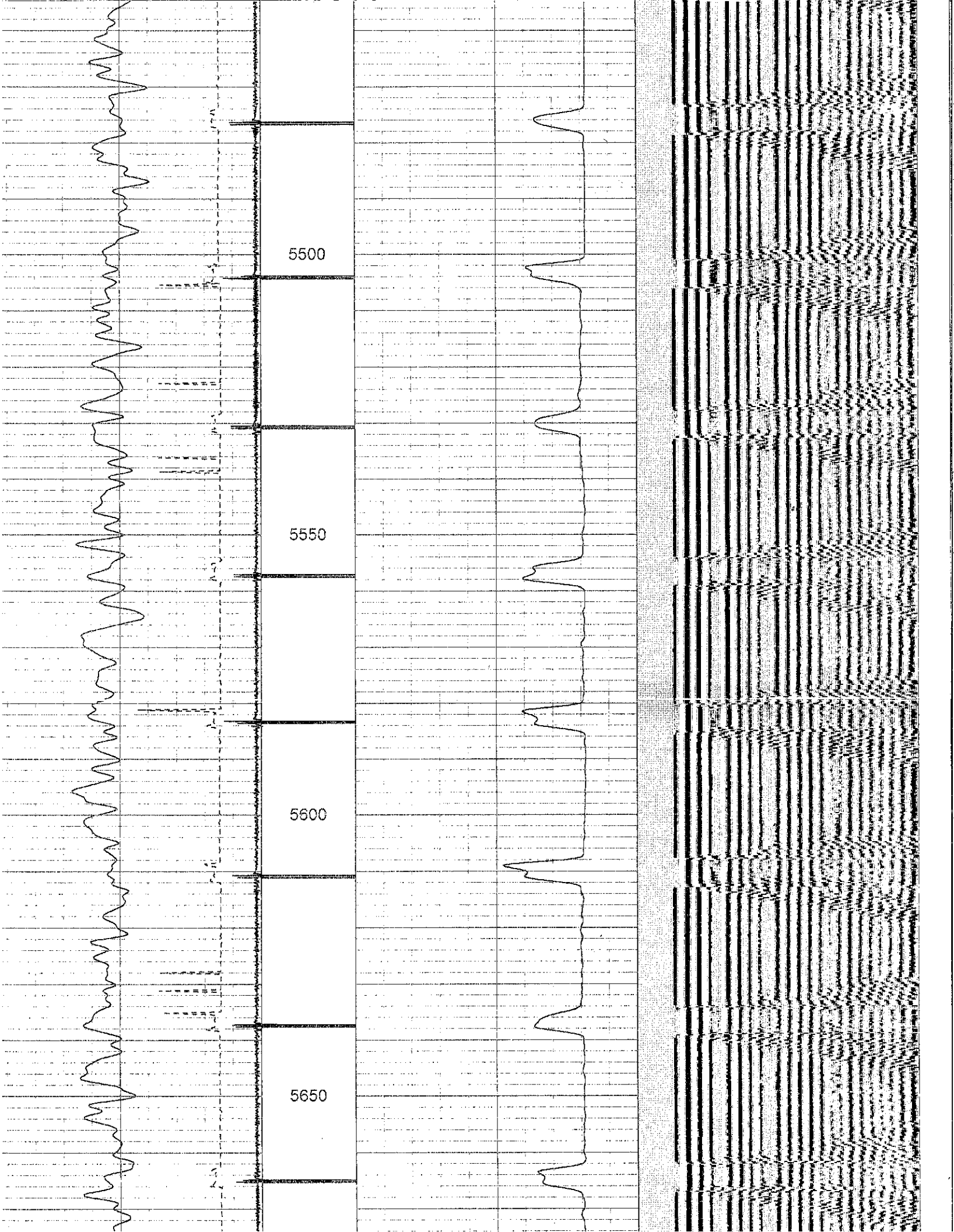


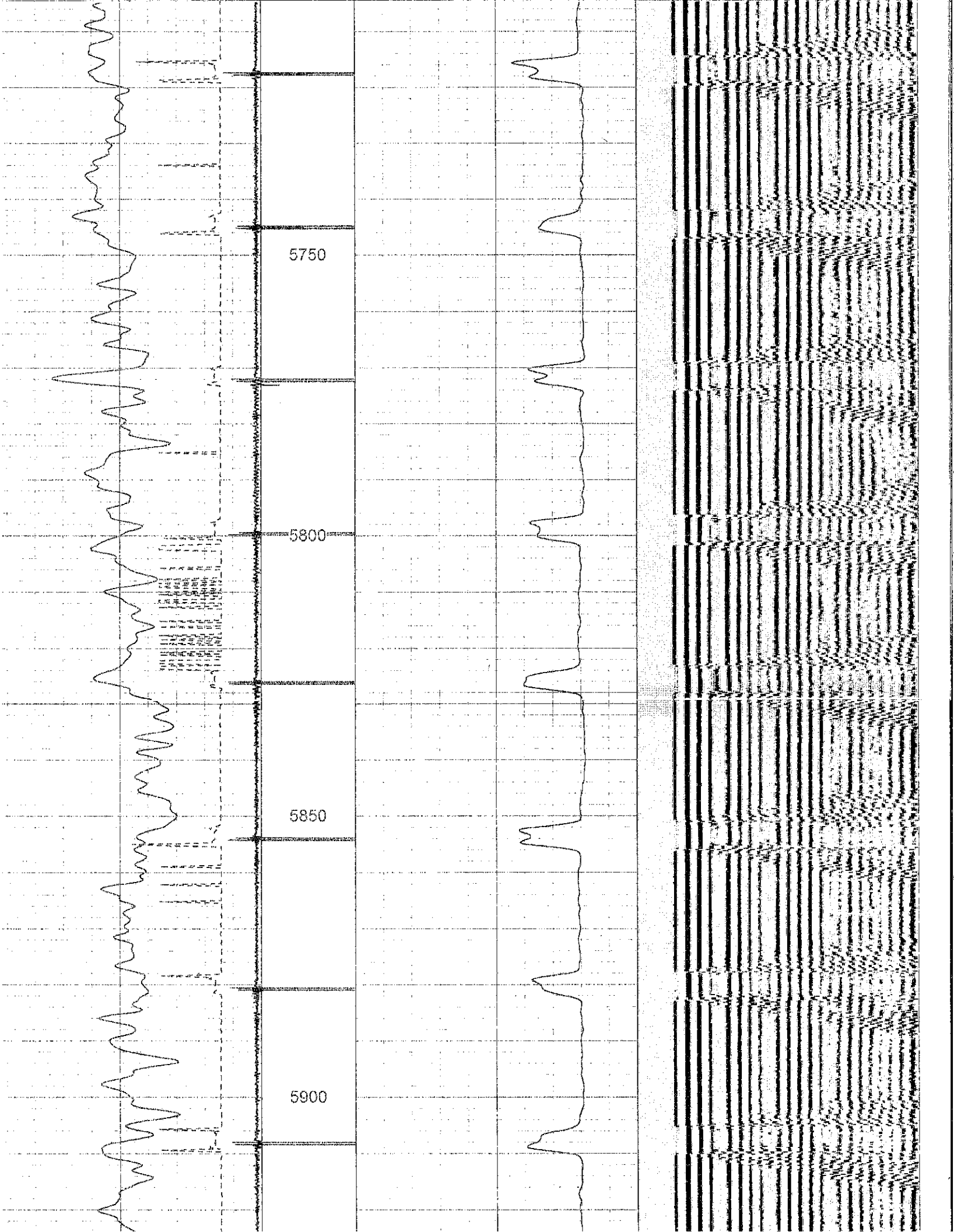
5250

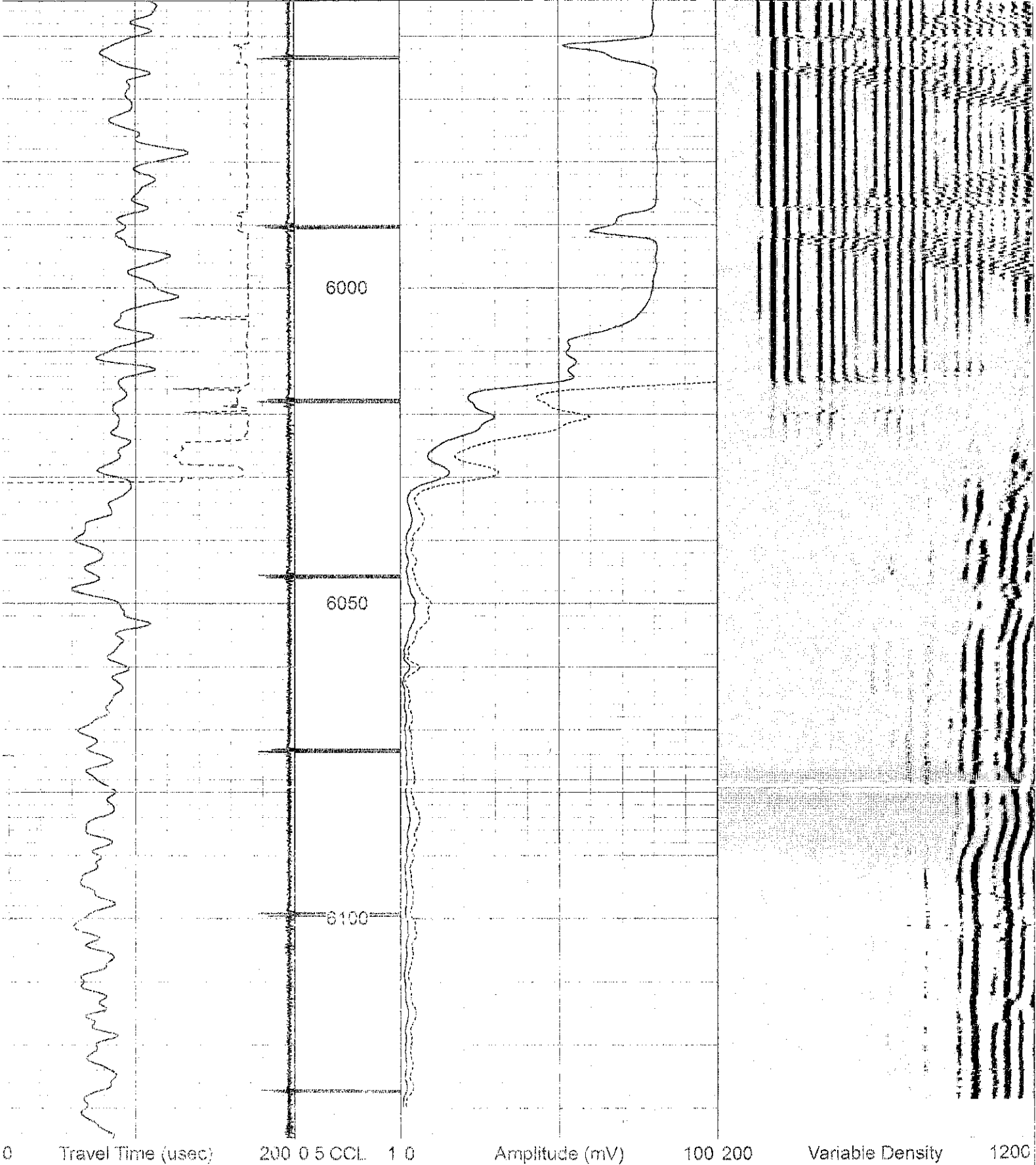
5300

5350

5400







0	Travel Time (usec)	200	0.5 CCL	1.0	Amplitude (mV)	100	200	Variable Density	1200
	Collar Locator	-0.5							
	Gamma Ray (GAPI)	200							