

Phillip Porter
Senior Environmental Representative – Wattenberg
PDC Energy Inc.
Phillip.Porter@pdce.com

Quantitative Vegetation Survey Report

COGCC Location Name (ID)	ANNIE-65N65W /9NENW (327364)
Operator Location Name	Annie 3-9 Well & Facility
COGCC Operator Name (ID)	PDC ENERGY, INC (69175)
Legal Description	NENW Sec. 9 T5N-R65W
Geographic Coordinates (WGS84)	40.419385/-104.670279

Mr. Porter,

Confluence Compliance Companies LLC (Confluence) is presenting this report to PDC Energy Inc. (PDC) documenting the results of a Quantitative Vegetation Survey (QVS) completed on the above-referenced location. The QVS was conducted to evaluate vegetation cover and composition in the reclaimed surface of the location (Reclaimed Surface) and an equivalent reference area (Reference Area) to determine if vegetative cover requirements for final reclamation in Colorado Oil & Gas Conservation Commission (COGCC) Rule 1004.d have been met. Included with this Report is a review of methodologies used to evaluate the Reclaimed Surface, results of those evaluations, and recommendations for how to proceed with the information presented in this Report. Attached is a Summary of Field Data, Topographic Location Map, Reclamation Survey Site Diagram, Vegetation Assessment Photo Log, Relative Foliar Species Abundance Table, and Vegetation Survey results that illustrate QVS findings.

Methods

The survey methodology employed by Confluence is based on the step-point method described in an interagency technical reference published by the Bureau of Land Management (BLM, 1996). Prior to field evaluation, a desktop review of historical PDC and COGCC records, and an aerial imagery evaluation is performed to define and map all portions of the Reclaimed Surface and identify and map an equivalent Reference Area. Equivalent Reference Area(s) are selected to ensure that comparative assessments are conducted in areas not previously impacted by oil and gas operations or other surface disturbing processes, have similar slope and aspect to the Reclaimed Surface, and are reflective of pre-disturbance conditions for the referenced location to the extent feasible. When on-site, data from the desktop review is confirmed with observations of site conditions to confirm the preliminary transect locations chosen to characterize the Reclaimed Surface and Reference Area. Transect locations are selected to best represent the vegetative cover and species composition of the respective areas, and to limit subjectivity of field personnel.

A bullseye target tool is used to collect vegetation survey data at 50 survey points along each transect. Foliar and basal cover, along with non-vegetated and noxious weed

occurrences, are documented at each survey point within the two Reclaim Transects and two Reference Transects, for a total of 100 survey points in both areas. Transect data is documented in the Vegetation Survey – Field Data Tables. Photographs are collected throughout the QVS to document site conditions and depict transects. These photos are included in the Vegetation Assessment Photo Log. The Reclamation Survey Site Diagram illustrates Transect locations as well as photo collection points.

Noxious weeds listed by the Colorado Department of Agriculture are excluded from the percent of reference vegetative coverage calculations, per COGCC Rule 1004.d. To ensure reclamation vegetative composition meets the standards of PDC and the COGCC, undesirable cover is also quantified in the attached Summary of Field Data. Undesirable cover includes species identified by the United States Department of Agriculture (USDA) Natural Resource Conservation Service (NRCS) as introduced and not native to the lower 48 states, and not considered beneficial for reclamation purposes. All other vegetation not classified as noxious or undesirable, is identified by growth habit (grass, forb, shrub) and is considered desirable vegetative cover.

Results

The QVS was conducted on August 8, 2021, with the following findings:

- Reclaimed Surface Desirable Foliar Cover is 41.0%.
- Reference Area Desirable Foliar Cover is 19.0%.
- Vegetative foliar cover within the Reclaimed Surface is composed of 41.0% desirable species, 53.0% undesirable species, and 6.0% noxious List C species.
- Vegetative foliar cover within the Reference Area is composed of 19.8% desirable species, 51.0% undesirable species, and 29.2% noxious List C species.
- Reclaimed Surface desirable dominant species include Bluebunch wheatgrass (*Pseudoroegneria spicata*), Sand dropseed (*Sporobolus cryptandrus*), and Western Wheatgrass (*Pascopyrum smithii*).
- Reference area desirable dominant species include Sand dropseed (*Sporobolus cryptandrus*), Smooth brome (*Bromus inermis*), Texas croton (*Croton texensis*), and Prairie sunflower (*Helianthus petiolaris*).

Based on these findings, the Reclaimed Surface has a desirable foliar vegetative cover that is 216.0% of the Reference Area.

Analysis and Recommendations

No reclamation maintenance is recommended for this location as undesirable and noxious weed species were under-represented on the Reclaimed Surface and vegetation establishment is uniform when compared to the Reference Area. Based on the results of the survey, final reclamation as defined by COGCC rules has been achieved and vegetation cover has been established that reflects surrounding conditions with a total plant cover of at least 80% of the Reference Area. Submittal of a Form 4 (Sundry Notice) is recommended to document successful completion of final reclamation and notify the COGCC that the site is ready for final reclamation inspection.



Confluence appreciates the opportunity to provide environmental consulting services on this project. If you have any questions about our methodology, the results of this assessment, or our conclusions, please let me know.

Respectfully,



Carolyn Craveiro de Sá

Project Manager

720-289-1631 (M)

720-432-7344 (O)

carolyn.craveiro@confluence-cc.com

Attachments

1. Quantitative Vegetation Survey – Summary of Field Data
2. Topographic Location Map
3. Reclamation Survey Site Diagram
4. Vegetation Assessment Photo Log
5. Quantitative Vegetation Survey – Relative Foliar Species Abundance Table
6. Quantitative Vegetation Survey – Field Data Tables

References

United States (U.S.) Department of Agriculture (USDA), Forest Service (USFS), Natural Resource Conservation Service (NRCS) and U.S. Department of the Interior (USDOI) Bureau of Land Management (BLM). "Sampling Vegetation Attributes, Interagency Technical Reference, 1996 (Revised in 1997, and 1999)". USDOI BLM Technical References #1734-4.



Quantitative Vegetation Survey - Summary of Field Data

Client	PDC ENERGY, INC (69175)
Operator Location Information	Annie 3-9 Well & Facility (Location ID: 327364)
Assessment Date	8/8/2021
Inspector Name	Adam Roll

Based on the survey methodology, the desirable foliar cover (%) in each survey area is calculated by summing the total number of grass, forb, and shrub foliar occurrences (#), excluding noxious weeds and undesirable species, and dividing by the total possible foliar occurrences in the transects (100). For this location:

Reclaim Area Vegetation

Desirable Foliar Cover = 41%

$$(41 + 0 + 0) / 100 = 0.41$$

Reference Area Vegetation

Desirable Foliar Cover = 19%

$$(15 + 4 + 0) / 100 = 0.19$$

For the purposes of this assessment, the undesirable foliar cover (%) in each survey is calculated by summing the total number of undesirable* foliar occurrences (#), excluding noxious weeds, and dividing by the total possible foliar occurrences in the transects (100). For this location:

Undesirable Foliar Cover = 53%

$$53 / 100 = 0.53$$

Undesirable Foliar Cover = 49%

$$49 / 100 = 0.49$$

The percent of reference used to evaluate the reclamation area for compliance with COGCC Rule 1003.e(2) is calculated by dividing the foliar cover (%) in the reclaim area by the foliar cover (%) in the reference area. For this location:

Percent of Reference = 216%

$$41\% / 19\% = 216\%$$

Reclaim Area Vegetation

Total Cover Type	#	%**
Desirable Foliar Cover	41	21%
Grass	41	21%
Forb	0	0%
Shrub	0	0%
Desirable Basal Cover	28	14%
Grass	28	14%
Forb	0	0%
Shrub	0	0%
Undesirable Cover	78	39%
Foliar	53	27%
Basal	25	13%
Non Vegetated	41	21%
Bare Ground	3	2%
Litter	36	18%
Rock	2	1%
Noxious Weeds Cover	12	6%
Foliar	6	3%
Basal	6	3%
Quality Assurance Total**	200	100%

Reference Area Vegetation

Total Cover Type	#	%**
Desirable Foliar Cover	19	10%
Grass	15	8%
Forb	4	2%
Shrub	0	0%
Desirable Basal Cover	13	7%
Grass	11	6%
Forb	2	1%
Shrub	0	0%
Undesirable Cover	69	35%
Foliar	49	25%
Basal	20	10%
Non Vegetated	37	19%
Bare Ground	3	2%
Litter	32	16%
Rock	2	1%
Noxious Weeds Cover	62	31%
Foliar	28	14%
Basal	34	17%
Quality Assurance Total**	200	100%

* Identified as introduced and non-native to the lower 48 states by the USDA NRCS, and not considered beneficial for reclamation purposes.

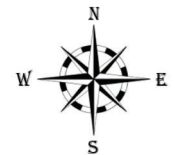
** % cover in the above cover detail tables represents Total Cover. For representation purposes, vegetative and non vegetated % Total Cover is rounded to the nearest whole number. The Quality Assurance Total is the summation of % cover with all applicable decimal numbers.

Topographic Location Map

PDC ENERGY, INC (69175)

Annie 3-9 Well
(ANNIE-65N65W /9NENW)
COGCC Location ID: 327364

Weld County
NENW Sec. 9 T5N-R65W



Topographic map sourced from 2020 Earth Point using
data provided by United States Geological Survey

Map created by Carolyn Craveiro on
10/10/2021.

Annie 3-9 Well

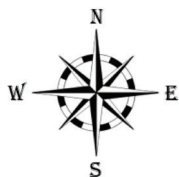
1 mi

Reclamation Survey Site Diagram





PDC ENERGY, INC (69175)

Annie 3-9 Well
(ANNIE-65N65W /9NENW)
COGCC Location ID: 327364

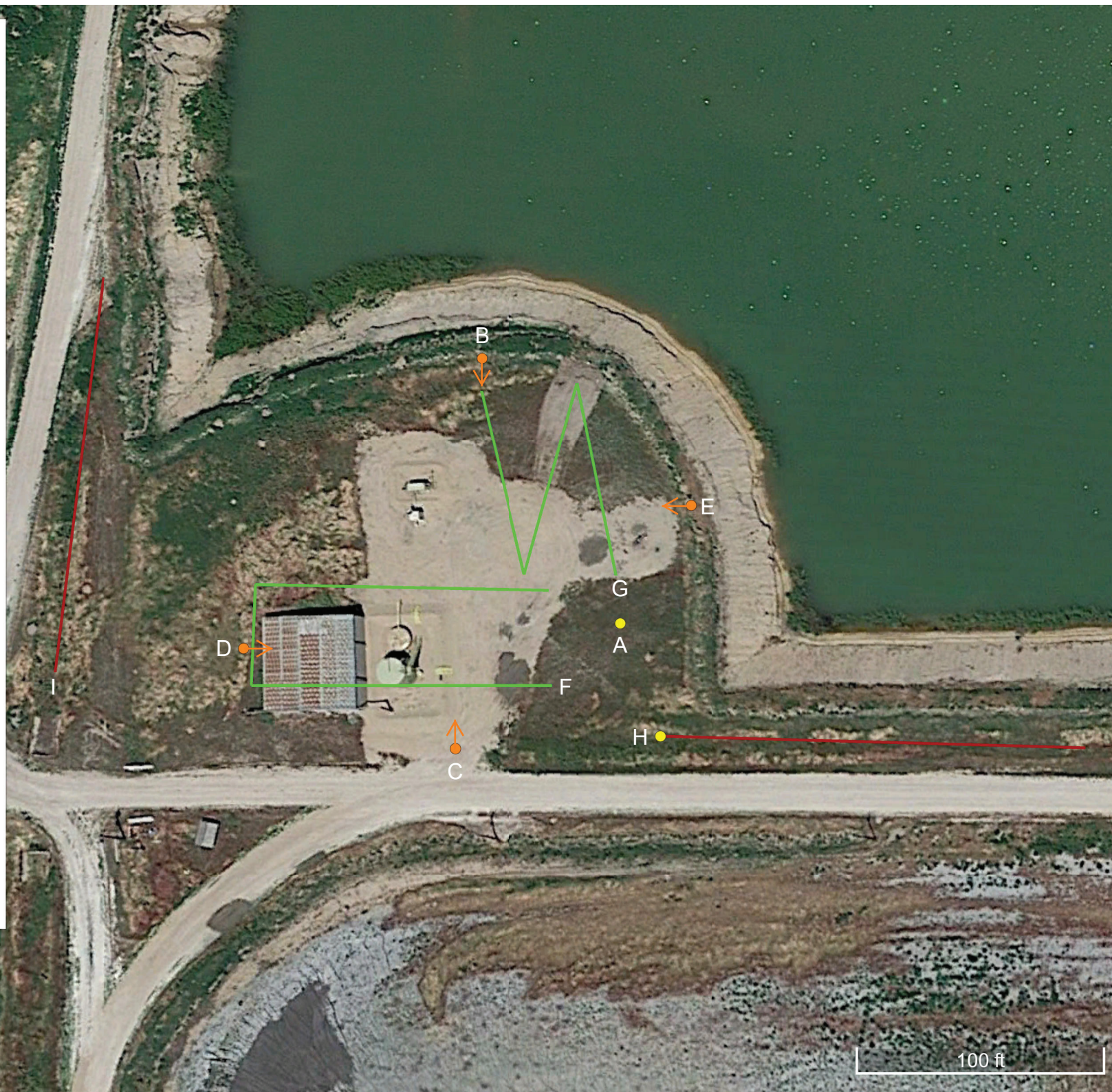
Weld County
NENW Sec. 9 T5N-R65W
Lat./Long.: 40.419385/-104.670279
Land Use: Non-Crop
Aerial Imagery Date: 06/19/2014



Legend

-  Directional Photo Point
-  Photo Point
-  Reference Transect
-  Reclaim Transect

Map created by Carolyn Craveiro on 10/10/2021.



Vegetation Assessment Photo Log

Date Completed - 08/08/2021

Client - PDC Energy Inc.

Location Name (ID) - Annie 3-9 Well & Facility (327364)



Photo Point A: Edge of Disturbance - Facing North



Vegetation Assessment Photo Log

Date Completed - 08/08/2021

Client - PDC Energy Inc.

Location Name (ID) - Annie 3-9 Well & Facility (327364)



Directional Photo Point B: North of Disturbance - Facing South



Directional Photo Point C: South of Disturbance - Facing North



Directional Photo Point D: West of Disturbance - Facing East



Directional Photo Point E: East of Disturbance - Facing West



Vegetation Assessment Photo Log

Date Completed - 08/08/2021

Client - PDC Energy Inc.

Location Name (ID) - Annie 3-9 Well & Facility (327364)



Photo Point A: Reclamation Area - Facing Northwest



Vegetation Assessment Photo Log

Client - PDC Energy Inc.

Date Completed - 08/08/2021

Location Name (ID) - Annie 3-9 Well & Facility (327364)



Photo Point F: Reclaim Transect 1 - Facing West



Photo Point G: Reclaim Transect 2 - Facing Northwest



Vegetation Assessment Photo Log

Date Completed - 08/08/2021

Client - PDC Energy Inc.

Location Name (ID) - Annie 3-9 Well & Facility (327364)



Photo Point H: Reference Area - Facing East



Vegetation Assessment Photo Log

Client - **PDC Energy Inc.**

Date Completed - 08/08/2021

Location Name (ID) - **Annie 3-9 Well & Facility (327364)**



Photo Point H: Reference Transect 1 - Facing East



Photo Point I: Reference Transect 2 - Facing North



Client	PDC ENERGY, INC (69175)
Operator Location Information	Annie 3-9 Well & Facility (Location ID: 327364)
Assessment Date	8/8/2021
Inspector Name	Adam Roll

Relative Foliar Species Abundance

Relative foliar species abundance is calculated by dividing the total number of foliar occurrences (#) of an individual species by the total number of foliar occurrences (#) in the transect(s).

Species listed by transect area	#	%
Reclaim	100	100.0%
Grass	41	41.0%
Bluebunch wheatgrass (<i>Pseudoroegneria spicata</i>)	19	19.0%
Sand dropseed (<i>Sporobolus cryptandrus</i>)	8	8.0%
Western Wheatgrass (<i>Pascopyrum smithii</i>)	5	5.0%
Alkali muhly (<i>Muhlenbergia asperifolia</i>)	5	5.0%
Inland saltgrass (<i>Distichlis spicata</i>)	3	3.0%
Blue Grama (<i>Bouteloua gracilis</i>)	1	1.0%
Noxious List C	6	6.0%
Field bindweed (<i>Convolvulus arvensis</i>)	4	4.0%
Puncturevine (<i>Tribulus terrestris</i>)	2	2.0%
Undesirable	53	53.0%
Stinkgrass (<i>Eragrostis cilianensis</i>)	22	22.0%
Kochia (<i>Kochia scoparia</i>)	20	20.0%
Russian thistle (<i>Salsola tragus</i> L.)	8	8.0%
Common Lambsquarters (<i>Chenopodium album</i>)	3	3.0%
Reference	96	100.0%
Forb	4	4.2%
Texas croton (<i>Croton texensis</i>)	2	2.1%
Prairie sunflower (<i>Helianthus petiolaris</i>)	2	2.1%
Grass	15	15.6%
Sand dropseed (<i>Sporobolus cryptandrus</i>)	9	9.4%
Smooth brome (<i>Bromus inermis</i>)	6	6.3%
Noxious List C	28	29.2%
Downy brome (<i>Bromus tectorum</i>)	14	14.6%
Field bindweed (<i>Convolvulus arvensis</i>)	12	12.5%
Puncturevine (<i>Tribulus terrestris</i>)	2	2.1%
Undesirable	49	51.0%
Kochia (<i>Kochia scoparia</i>)	38	39.6%
Large crabgrass (<i>Digitaria sanguinalis</i>)	4	4.2%
Russian thistle (<i>Salsola tragus</i> L.)	3	3.1%
Cereal rye (<i>Secale cereale</i>)	3	3.1%
Curly dock (<i>Rumex crispus</i>)	1	1.0%
Grand Total	196	

Client PDC ENERGY, INC (69175)
Operator Location Information Annie 3-9 Well site (Location ID: 327364)
Assessment Date 8/8/2021
Inspector Name Adam Roll
Transect Length 295 Feet

Reclaim Transect 1

Point #	Cover Type - Foliar	Species - Foliar	Cover Type - Basal	Species - Basal
1	Undesirable	Stinkgrass (Eragrostis cilianensis)	Undesirable	Stinkgrass (Eragrostis cilianensis)
2	Undesirable	Stinkgrass (Eragrostis cilianensis)	Non-Vegetated	Bare Ground
3	Undesirable	Kochia (Kochia scoparia)	Non-Vegetated	Litter
4	Undesirable	Stinkgrass (Eragrostis cilianensis)	Undesirable	Stinkgrass (Eragrostis cilianensis)
5	Grass	Bluebunch wheatgrass (Pseudoroegneria spicata)	Grass	Bluebunch wheatgrass (Pseudoroegneria spicata)
6	Noxious List C	Puncturevine (Tribulus terrestris)	Non-Vegetated	Litter
7	Grass	Bluebunch wheatgrass (Pseudoroegneria spicata)	Undesirable	Russian thistle (Salsola tragus L.)
8	Undesirable	Stinkgrass (Eragrostis cilianensis)	Undesirable	Stinkgrass (Eragrostis cilianensis)
9	Undesirable	Russian thistle (Salsola tragus L.)	Undesirable	Stinkgrass (Eragrostis cilianensis)
10	Grass	Blue Grama (Bouteloua gracilis)	Grass	Blue Grama (Bouteloua gracilis)
11	Undesirable	Russian thistle (Salsola tragus L.)	Noxious List C	Puncturevine (Tribulus terrestris)
12	Grass	Bluebunch wheatgrass (Pseudoroegneria spicata)	Non-Vegetated	Litter
13	Undesirable	Kochia (Kochia scoparia)	Non-Vegetated	Bare Ground
14	Noxious List C	Puncturevine (Tribulus terrestris)	Non-Vegetated	Litter
15	Undesirable	Kochia (Kochia scoparia)	Non-Vegetated	Litter
16	Undesirable	Russian thistle (Salsola tragus L.)	Non-Vegetated	Litter
17	Undesirable	Kochia (Kochia scoparia)	Grass	Bluebunch wheatgrass (Pseudoroegneria spicata)
18	Undesirable	Russian thistle (Salsola tragus L.)	Non-Vegetated	Litter
19	Undesirable	Stinkgrass (Eragrostis cilianensis)	Non-Vegetated	Litter
20	Undesirable	Stinkgrass (Eragrostis cilianensis)	Non-Vegetated	Litter
21	Undesirable	Stinkgrass (Eragrostis cilianensis)	Undesirable	Stinkgrass (Eragrostis cilianensis)
22	Grass	Bluebunch wheatgrass (Pseudoroegneria spicata)	Non-Vegetated	Litter
23	Grass	Bluebunch wheatgrass (Pseudoroegneria spicata)	Non-Vegetated	Litter
24	Grass	Bluebunch wheatgrass (Pseudoroegneria spicata)	Noxious List C	Field bindweed (Convolvulus arvensis)
25	Undesirable	Common Lambsquarters (Chenopodium album)	Non-Vegetated	Litter
26	Grass	Bluebunch wheatgrass (Pseudoroegneria spicata)	Undesirable	Stinkgrass (Eragrostis cilianensis)
27	Undesirable	Common Lambsquarters (Chenopodium album)	Grass	Bluebunch wheatgrass (Pseudoroegneria spicata)
28	Undesirable	Russian thistle (Salsola tragus L.)	Non-Vegetated	Litter
29	Grass	Bluebunch wheatgrass (Pseudoroegneria spicata)	Grass	Bluebunch wheatgrass (Pseudoroegneria spicata)
30	Grass	Bluebunch wheatgrass (Pseudoroegneria spicata)	Undesirable	Stinkgrass (Eragrostis cilianensis)
31	Grass	Bluebunch wheatgrass (Pseudoroegneria spicata)	Non-Vegetated	Litter
32	Undesirable	Stinkgrass (Eragrostis cilianensis)	Grass	Bluebunch wheatgrass (Pseudoroegneria spicata)
33	Grass	Bluebunch wheatgrass (Pseudoroegneria spicata)	Non-Vegetated	Litter
34	Grass	Bluebunch wheatgrass (Pseudoroegneria spicata)	Non-Vegetated	Litter
35	Undesirable	Kochia (Kochia scoparia)	Non-Vegetated	Litter
36	Undesirable	Kochia (Kochia scoparia)	Grass	Bluebunch wheatgrass (Pseudoroegneria spicata)
37	Grass	Alkali muhly (Muhlenbergia asperifolia)	Non-Vegetated	Litter
38	Undesirable	Stinkgrass (Eragrostis cilianensis)	Non-Vegetated	Litter
39	Undesirable	Stinkgrass (Eragrostis cilianensis)	Undesirable	Stinkgrass (Eragrostis cilianensis)
40	Undesirable	Stinkgrass (Eragrostis cilianensis)	Undesirable	Stinkgrass (Eragrostis cilianensis)
41	Undesirable	Stinkgrass (Eragrostis cilianensis)	Grass	Bluebunch wheatgrass (Pseudoroegneria spicata)
42	Undesirable	Stinkgrass (Eragrostis cilianensis)	Undesirable	Stinkgrass (Eragrostis cilianensis)
43	Grass	Alkali muhly (Muhlenbergia asperifolia)	Undesirable	Stinkgrass (Eragrostis cilianensis)
44	Undesirable	Stinkgrass (Eragrostis cilianensis)	Non-Vegetated	Litter
45	Undesirable	Kochia (Kochia scoparia)	Undesirable	Kochia (Kochia scoparia)
46	Undesirable	Kochia (Kochia scoparia)	Non-Vegetated	Litter
47	Grass	Bluebunch wheatgrass (Pseudoroegneria spicata)	Grass	Bluebunch wheatgrass (Pseudoroegneria spicata)
48	Undesirable	Kochia (Kochia scoparia)	Non-Vegetated	Litter
49	Undesirable	Kochia (Kochia scoparia)	Grass	Western Wheatgrass (Pascopyrum smithii)
50	Grass	Alkali muhly (Muhlenbergia asperifolia)	Undesirable	Stinkgrass (Eragrostis cilianensis)

Client PDC ENERGY, INC (69175)
Operator Location Information Annie 3-9 Well site (Location ID: 327364)
Assessment Date 8/8/2021
Inspector Name Adam Roll
Transect Length 257 Feet

Reclaim Transect 2

Point #	Cover Type - Foliar	Species - Foliar	Cover Type - Basal	Species - Basal
1	Grass	Inland saltgrass (<i>Distichlis spicata</i>)	Grass	Inland saltgrass (<i>Distichlis spicata</i>)
2	Grass	Sand dropseed (<i>Sporobolus cryptandrus</i>)	Non-Vegetated	Rock
3	Grass	Western Wheatgrass (<i>Pascopyrum smithii</i>)	Grass	Western Wheatgrass (<i>Pascopyrum smithii</i>)
4	Undesirable	Russian thistle (<i>Salsola tragus</i> L.)	Non-Vegetated	Bare Ground
5	Undesirable	Stinkgrass (<i>Eragrostis cilianensis</i>)	Undesirable	Stinkgrass (<i>Eragrostis cilianensis</i>)
6	Grass	Bluebunch wheatgrass (<i>Pseudoroegneria spicata</i>)	Undesirable	Stinkgrass (<i>Eragrostis cilianensis</i>)
7	Grass	Alkali muhly (<i>Muhlenbergia asperifolia</i>)	Non-Vegetated	Litter
8	Grass	Sand dropseed (<i>Sporobolus cryptandrus</i>)	Undesirable	Stinkgrass (<i>Eragrostis cilianensis</i>)
9	Grass	Western Wheatgrass (<i>Pascopyrum smithii</i>)	Non-Vegetated	Litter
10	Undesirable	Kochia (<i>Kochia scoparia</i>)	Grass	Bluebunch wheatgrass (<i>Pseudoroegneria spicata</i>)
11	Grass	Bluebunch wheatgrass (<i>Pseudoroegneria spicata</i>)	Non-Vegetated	Litter
12	Grass	Sand dropseed (<i>Sporobolus cryptandrus</i>)	Noxious List C	Field bindweed (<i>Convolvulus arvensis</i>)
13	Grass	Sand dropseed (<i>Sporobolus cryptandrus</i>)	Noxious List C	Field bindweed (<i>Convolvulus arvensis</i>)
14	Grass	Sand dropseed (<i>Sporobolus cryptandrus</i>)	Noxious List C	Field bindweed (<i>Convolvulus arvensis</i>)
15	Grass	Sand dropseed (<i>Sporobolus cryptandrus</i>)	Non-Vegetated	Litter
16	Noxious List C	Field bindweed (<i>Convolvulus arvensis</i>)	Grass	Inland saltgrass (<i>Distichlis spicata</i>)
17	Grass	Sand dropseed (<i>Sporobolus cryptandrus</i>)	Non-Vegetated	Litter
18	Noxious List C	Field bindweed (<i>Convolvulus arvensis</i>)	Grass	Sand dropseed (<i>Sporobolus cryptandrus</i>)
19	Grass	Bluebunch wheatgrass (<i>Pseudoroegneria spicata</i>)	Grass	Bluebunch wheatgrass (<i>Pseudoroegneria spicata</i>)
20	Noxious List C	Field bindweed (<i>Convolvulus arvensis</i>)	Non-Vegetated	Litter
21	Grass	Western Wheatgrass (<i>Pascopyrum smithii</i>)	Grass	Western Wheatgrass (<i>Pascopyrum smithii</i>)
22	Undesirable	Stinkgrass (<i>Eragrostis cilianensis</i>)	Non-Vegetated	Litter
23	Undesirable	Kochia (<i>Kochia scoparia</i>)	Non-Vegetated	Litter
24	Undesirable	Stinkgrass (<i>Eragrostis cilianensis</i>)	Non-Vegetated	Litter
25	Grass	Bluebunch wheatgrass (<i>Pseudoroegneria spicata</i>)	Non-Vegetated	Litter
26	Undesirable	Stinkgrass (<i>Eragrostis cilianensis</i>)	Grass	Bluebunch wheatgrass (<i>Pseudoroegneria spicata</i>)
27	Grass	Alkali muhly (<i>Muhlenbergia asperifolia</i>)	Undesirable	Stinkgrass (<i>Eragrostis cilianensis</i>)
28	Grass	Western Wheatgrass (<i>Pascopyrum smithii</i>)	Grass	Western Wheatgrass (<i>Pascopyrum smithii</i>)
29	Grass	Western Wheatgrass (<i>Pascopyrum smithii</i>)	Grass	Western Wheatgrass (<i>Pascopyrum smithii</i>)
30	Undesirable	Stinkgrass (<i>Eragrostis cilianensis</i>)	Undesirable	Stinkgrass (<i>Eragrostis cilianensis</i>)
31	Grass	Bluebunch wheatgrass (<i>Pseudoroegneria spicata</i>)	Grass	Bluebunch wheatgrass (<i>Pseudoroegneria spicata</i>)
32	Undesirable	Stinkgrass (<i>Eragrostis cilianensis</i>)	Non-Vegetated	Litter
33	Undesirable	Stinkgrass (<i>Eragrostis cilianensis</i>)	Non-Vegetated	Litter
34	Undesirable	Russian thistle (<i>Salsola tragus</i> L.)	Grass	Bluebunch wheatgrass (<i>Pseudoroegneria spicata</i>)
35	Undesirable	Kochia (<i>Kochia scoparia</i>)	Non-Vegetated	Litter
36	Undesirable	Kochia (<i>Kochia scoparia</i>)	Undesirable	Kochia (<i>Kochia scoparia</i>)
37	Grass	Bluebunch wheatgrass (<i>Pseudoroegneria spicata</i>)	Grass	Bluebunch wheatgrass (<i>Pseudoroegneria spicata</i>)
38	Undesirable	Stinkgrass (<i>Eragrostis cilianensis</i>)	Undesirable	Stinkgrass (<i>Eragrostis cilianensis</i>)
39	Undesirable	Kochia (<i>Kochia scoparia</i>)	Undesirable	Stinkgrass (<i>Eragrostis cilianensis</i>)
40	Grass	Inland saltgrass (<i>Distichlis spicata</i>)	Non-Vegetated	Rock
41	Grass	Inland saltgrass (<i>Distichlis spicata</i>)	Grass	Inland saltgrass (<i>Distichlis spicata</i>)
42	Noxious List C	Field bindweed (<i>Convolvulus arvensis</i>)	Grass	Inland saltgrass (<i>Distichlis spicata</i>)
43	Grass	Sand dropseed (<i>Sporobolus cryptandrus</i>)	Grass	Inland saltgrass (<i>Distichlis spicata</i>)
44	Undesirable	Common Lambsquarters (<i>Chenopodium album</i>)	Grass	Bluebunch wheatgrass (<i>Pseudoroegneria spicata</i>)
45	Undesirable	Kochia (<i>Kochia scoparia</i>)	Undesirable	Kochia (<i>Kochia scoparia</i>)
46	Undesirable	Kochia (<i>Kochia scoparia</i>)	Undesirable	Kochia (<i>Kochia scoparia</i>)
47	Undesirable	Kochia (<i>Kochia scoparia</i>)	Grass	Bluebunch wheatgrass (<i>Pseudoroegneria spicata</i>)
48	Undesirable	Russian thistle (<i>Salsola tragus</i> L.)	Non-Vegetated	Litter
49	Undesirable	Kochia (<i>Kochia scoparia</i>)	Noxious List C	Puncturevine (<i>Tribulus terrestris</i>)
50	Undesirable	Kochia (<i>Kochia scoparia</i>)	Undesirable	Kochia (<i>Kochia scoparia</i>)

Client PDC ENERGY, INC (69175)
Operator Location Information Annie 3-9 Well site (Location ID: 327364)
Assessment Date 8/8/2021
Inspector Name Adam Roll
Transect Length 275 Feet

Reference Transect 1

Point #	Cover Type - Foliar	Species - Foliar	Cover Type - Basal	Species - Basal
1	Undesirable	Russian thistle (Salsola tragus L.)	Non-Vegetated	Litter
2	Undesirable	Russian thistle (Salsola tragus L.)	Non-Vegetated	Bare Ground
3	Grass	Sand dropseed (Sporobolus cryptandrus)	Non-Vegetated	Litter
4	Noxious List C	Downy brome (Bromus tectorum)	Noxious List C	Downy brome (Bromus tectorum)
5	Undesirable	Large crabgrass (Digitaria sanguinalis)	Noxious List C	Downy brome (Bromus tectorum)
6	Noxious List C	Field bindweed (Convolvulus arvensis)	Noxious List C	Downy brome (Bromus tectorum)
7	Undesirable	Large crabgrass (Digitaria sanguinalis)	Noxious List C	Downy brome (Bromus tectorum)
8	Undesirable	Kochia (Kochia scoparia)	Undesirable	Common mallow (Malva neglecta)
9	Undesirable	Kochia (Kochia scoparia)	Non-Vegetated	Litter
10	Noxious List C	Downy brome (Bromus tectorum)	Noxious List C	Downy brome (Bromus tectorum)
11	Noxious List C	Field bindweed (Convolvulus arvensis)	Noxious List C	Downy brome (Bromus tectorum)
12	Noxious List C	Field bindweed (Convolvulus arvensis)	Grass	Inland saltgrass (Distichlis spicata)
13	Undesirable	Kochia (Kochia scoparia)	Non-Vegetated	Litter
14	Undesirable	Kochia (Kochia scoparia)	Noxious List C	Downy brome (Bromus tectorum)
15	Undesirable	Kochia (Kochia scoparia)	Undesirable	Large crabgrass (Digitaria sanguinalis)
16	Undesirable	Large crabgrass (Digitaria sanguinalis)	Noxious List C	Downy brome (Bromus tectorum)
17	Noxious List C	Downy brome (Bromus tectorum)	Undesirable	Curly dock (Rumex crispus)
18	Noxious List C	Downy brome (Bromus tectorum)	Noxious List C	Downy brome (Bromus tectorum)
19	Undesirable	Large crabgrass (Digitaria sanguinalis)	Noxious List C	Downy brome (Bromus tectorum)
20	Noxious List C	Downy brome (Bromus tectorum)	Noxious List C	Downy brome (Bromus tectorum)
21	Undesirable	Russian thistle (Salsola tragus L.)	Non-Vegetated	Litter
22	Grass	Smooth brome (Bromus inermis)	Grass	Smooth brome (Bromus inermis)
23	Undesirable	Kochia (Kochia scoparia)	Undesirable	Kochia (Kochia scoparia)
24	Undesirable	Kochia (Kochia scoparia)	Noxious List C	Downy brome (Bromus tectorum)
25	Noxious List C	Field bindweed (Convolvulus arvensis)	Noxious List C	Downy brome (Bromus tectorum)
26	Noxious List C	Field bindweed (Convolvulus arvensis)	Noxious List C	Downy brome (Bromus tectorum)
27	Noxious List C	Field bindweed (Convolvulus arvensis)	Noxious List C	Downy brome (Bromus tectorum)
28	Noxious List C	Field bindweed (Convolvulus arvensis)	Noxious List C	Downy brome (Bromus tectorum)
29	Undesirable	Kochia (Kochia scoparia)	Non-Vegetated	Litter
30	None	NA	Non-Vegetated	Litter
31	Noxious List C	Downy brome (Bromus tectorum)	Non-Vegetated	Litter
32	Noxious List C	Downy brome (Bromus tectorum)	Non-Vegetated	Litter
33	None	NA	Non-Vegetated	Litter
34	Undesirable	Kochia (Kochia scoparia)	Undesirable	Kochia (Kochia scoparia)
35	Undesirable	Kochia (Kochia scoparia)	Undesirable	Kochia (Kochia scoparia)
36	Undesirable	Kochia (Kochia scoparia)	Non-Vegetated	Litter
37	Grass	Sand dropseed (Sporobolus cryptandrus)	Noxious List C	Downy brome (Bromus tectorum)
38	Grass	Smooth brome (Bromus inermis)	Grass	Smooth brome (Bromus inermis)
39	Noxious List C	Downy brome (Bromus tectorum)	Noxious List C	Downy brome (Bromus tectorum)
40	Undesirable	Kochia (Kochia scoparia)	Non-Vegetated	Litter
41	Undesirable	Kochia (Kochia scoparia)	Grass	Smooth brome (Bromus inermis)
42	Noxious List C	Downy brome (Bromus tectorum)	Noxious List C	Puncturevine (Tribulus terrestris)
43	Grass	Smooth brome (Bromus inermis)	Non-Vegetated	Litter
44	Undesirable	Kochia (Kochia scoparia)	Non-Vegetated	Rock
45	Undesirable	Kochia (Kochia scoparia)	Undesirable	Kochia (Kochia scoparia)
46	Grass	Smooth brome (Bromus inermis)	Grass	Smooth brome (Bromus inermis)
47	Grass	Smooth brome (Bromus inermis)	Grass	Smooth brome (Bromus inermis)
48	Grass	Smooth brome (Bromus inermis)	Grass	Smooth brome (Bromus inermis)
49	Undesirable	Kochia (Kochia scoparia)	Non-Vegetated	Litter
50	Undesirable	Kochia (Kochia scoparia)	Grass	Smooth brome (Bromus inermis)

Client PDC ENERGY, INC (69175)
Operator Location Information Annie 3-9 Well site (Location ID: 327364)
Assessment Date 8/8/2021
Inspector Name Adam Roll
Transect Length 274 Feet

Reference Transect 2

Point #	Cover Type - Foliar	Species - Foliar	Cover Type - Basal	Species - Basal
1	None	NA	Non-Vegetated	Bare Ground
2	Undesirable	Kochia (Kochia scoparia)	Non-Vegetated	Litter
3	Forb	Texas croton (Croton texensis)	Forb	Texas croton (Croton texensis)
4	Undesirable	Kochia (Kochia scoparia)	Undesirable	Kochia (Kochia scoparia)
5	Undesirable	Kochia (Kochia scoparia)	Non-Vegetated	Litter
6	Forb	Texas croton (Croton texensis)	Noxious List C	Puncturevine (Tribulus terrestris)
7	Noxious List C	Puncturevine (Tribulus terrestris)	Non-Vegetated	Litter
8	Undesirable	Kochia (Kochia scoparia)	Forb	Texas croton (Croton texensis)
9	Undesirable	Kochia (Kochia scoparia)	Non-Vegetated	Litter
10	Undesirable	Kochia (Kochia scoparia)	Noxious List C	Puncturevine (Tribulus terrestris)
11	Grass	Sand dropseed (Sporobolus cryptandrus)	Non-Vegetated	Litter
12	Undesirable	Kochia (Kochia scoparia)	Non-Vegetated	Litter
13	Undesirable	Kochia (Kochia scoparia)	Non-Vegetated	Litter
14	Undesirable	Kochia (Kochia scoparia)	Non-Vegetated	Litter
15	Forb	Prairie sunflower (Helianthus petiolaris)	Undesirable	Kochia (Kochia scoparia)
16	None	NA	Non-Vegetated	Litter
17	Undesirable	Kochia (Kochia scoparia)	Non-Vegetated	Litter
18	Undesirable	Kochia (Kochia scoparia)	Non-Vegetated	Litter
19	Undesirable	Kochia (Kochia scoparia)	Non-Vegetated	Litter
20	Forb	Prairie sunflower (Helianthus petiolaris)	Non-Vegetated	Litter
21	Undesirable	Kochia (Kochia scoparia)	Undesirable	Kochia (Kochia scoparia)
22	Undesirable	Kochia (Kochia scoparia)	Grass	Sand dropseed (Sporobolus cryptandrus)
23	Undesirable	Kochia (Kochia scoparia)	Grass	Sand dropseed (Sporobolus cryptandrus)
24	Undesirable	Kochia (Kochia scoparia)	Undesirable	Kochia (Kochia scoparia)
25	Undesirable	Kochia (Kochia scoparia)	Non-Vegetated	Litter
26	Undesirable	Curly dock (Rumex crispus)	Undesirable	Curly dock (Rumex crispus)
27	Undesirable	Kochia (Kochia scoparia)	Non-Vegetated	Litter
28	Undesirable	Kochia (Kochia scoparia)	Undesirable	Kochia (Kochia scoparia)
29	Undesirable	Kochia (Kochia scoparia)	Undesirable	Kochia (Kochia scoparia)
30	Grass	Sand dropseed (Sporobolus cryptandrus)	Non-Vegetated	Rock
31	Undesirable	Kochia (Kochia scoparia)	Undesirable	Kochia (Kochia scoparia)
32	Noxious List C	Downy brome (Bromus tectorum)	Noxious List C	Downy brome (Bromus tectorum)
33	Noxious List C	Field bindweed (Convolvulus arvensis)	Noxious List C	Downy brome (Bromus tectorum)
34	Noxious List C	Field bindweed (Convolvulus arvensis)	Noxious List C	Field bindweed (Convolvulus arvensis)
35	Noxious List C	Field bindweed (Convolvulus arvensis)	Noxious List C	Field bindweed (Convolvulus arvensis)
36	Undesirable	Cereal rye (Secale cereale)	Noxious List C	Downy brome (Bromus tectorum)
37	Noxious List C	Field bindweed (Convolvulus arvensis)	Undesirable	Cereal rye (Secale cereale)
38	Noxious List C	Field bindweed (Convolvulus arvensis)	Undesirable	Cereal rye (Secale cereale)
39	Undesirable	Cereal rye (Secale cereale)	Undesirable	Cereal rye (Secale cereale)
40	Undesirable	Cereal rye (Secale cereale)	Undesirable	Cereal rye (Secale cereale)
41	Noxious List C	Puncturevine (Tribulus terrestris)	Noxious List C	Puncturevine (Tribulus terrestris)
42	Grass	Sand dropseed (Sporobolus cryptandrus)	Noxious List C	Downy brome (Bromus tectorum)
43	Grass	Sand dropseed (Sporobolus cryptandrus)	Noxious List C	Downy brome (Bromus tectorum)
44	Noxious List C	Downy brome (Bromus tectorum)	Noxious List C	Downy brome (Bromus tectorum)
45	Grass	Sand dropseed (Sporobolus cryptandrus)	Noxious List C	Downy brome (Bromus tectorum)
46	Noxious List C	Downy brome (Bromus tectorum)	Noxious List C	Puncturevine (Tribulus terrestris)
47	Grass	Sand dropseed (Sporobolus cryptandrus)	Undesirable	Kochia (Kochia scoparia)
48	Grass	Sand dropseed (Sporobolus cryptandrus)	Noxious List C	Downy brome (Bromus tectorum)
49	Noxious List C	Downy brome (Bromus tectorum)	Grass	Sand dropseed (Sporobolus cryptandrus)
50	Noxious List C	Downy brome (Bromus tectorum)	Noxious List C	Puncturevine (Tribulus terrestris)