



Pad Name: Blehm Pad  
Well Name: BLEHM\_06  
Ground Level: 5076.0  
SHL Latitude: 40° 34' 27.707 N  
SHL Longitude: 104° 49' 33.326 W

## SECTION DETAILS

Sec	MD	Inc	Azi	TVD	+N/-S	+E/-W	Dleg	TFace	VSect	Target
1	0.0	0.00	0.00	0.0	0.0	0.0	0.00	0.00	0.0	
2	1500.0	0.00	0.00	1500.0	0.0	0.0	0.00	0.00	0.0	
3	2525.8	20.52	281.59	2504.0	36.5	-178.0	2.00	281.59	178.8	
4	5937.3	20.52	281.59	5699.1	276.7	-1349.2	0.00	0.00	1355.3	
5	6963.1	0.00	269.77	6703.1	313.2	-1527.3	2.00	180.00	1534.1	
6	7873.8	91.07	269.77	7276.0	310.9	-2110.9	10.00	0.00	2117.6	BLEHM_06 LP
7	17489.1	91.07	269.77	7096.0	272.0	-11724.4	0.00	0.00	11727.6	BLEHM_06 PBHL

## DESIGN TARGET DETAILS

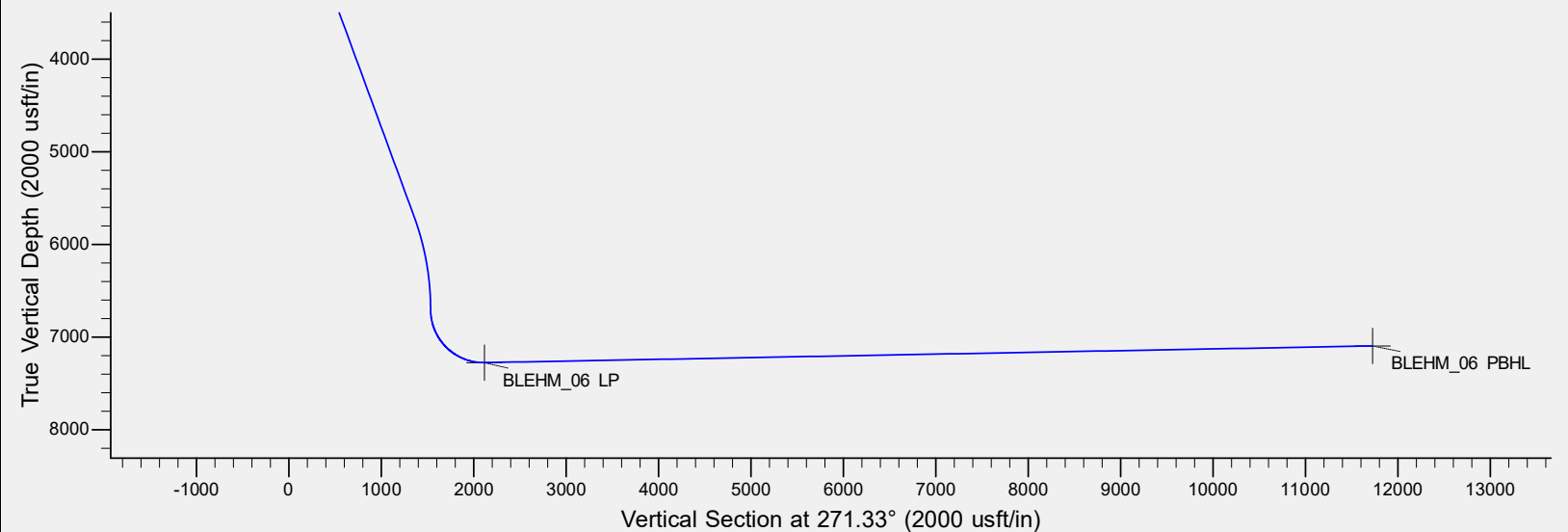
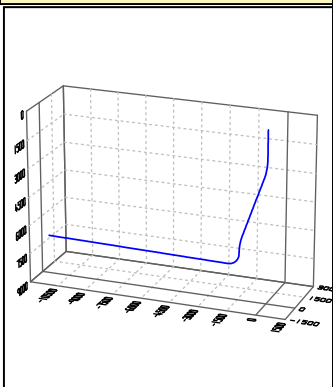
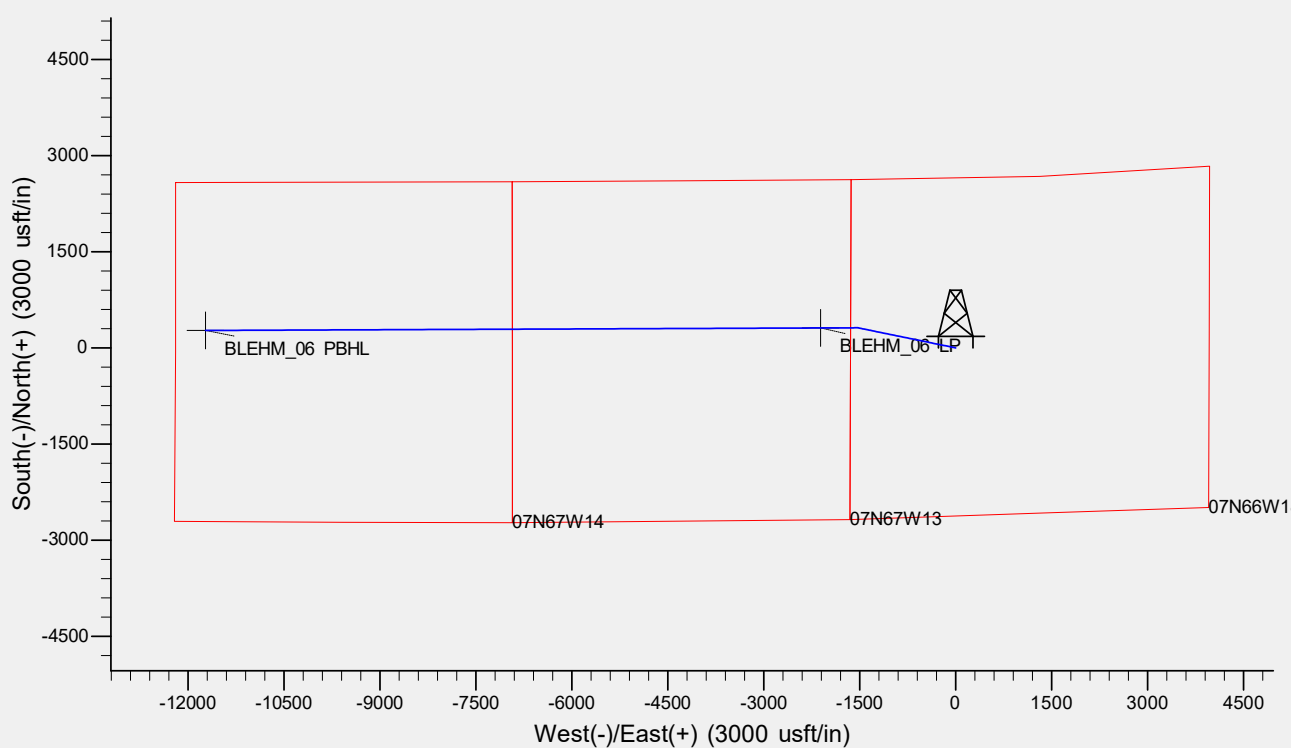
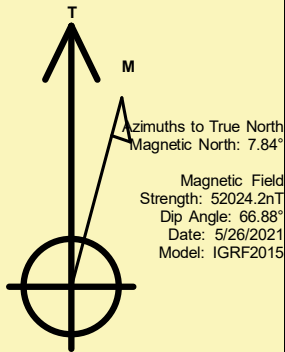
Name	TVD	+N/-S	+E/-W	Northing	Easting	Latitude	Longitude	Shape
BLEHM_06 LP	7276.0	310.9	-2110.9	1453088.11	3185139.25	40° 34' 30.778 N	104° 50' 0.683 W	Point
BLEHM_06 PBHL	- plan hits target center 7096.0	272.0	-11724.4	1452976.20	3175526.30	40° 34' 30.367 N	104° 52' 5.268 W	Point
	- plan hits target center							

## REFERENCE INFORMATION

Co-ordinate (N/E) Reference: Well BLEHM\_06, True North  
Vertical (TVD) Reference: KB @ 5096.0usft (Original Well Elev)  
Section (VS) Reference: Slot - (0.0N, 0.0E)  
Measured Depth Reference: KB @ 5096.0usft (Original Well Elev)  
Calculation Method: Minimum Curvature

## CASING DETAILS

No casing data is available



# **Bayswater Exploration & Production, LLC**

**DJ Basin**

**Blehm Pad**

**BLEHM\_06**

**Wellbore #1**

**Plan: Design #1**

## **Standard Planning Report**

**28 May, 2021**

# Bayswater Exploration & Production LLC

## Planning Report

<b>Database:</b>	edm	<b>Local Co-ordinate Reference:</b>	Well BLEHM_06
<b>Company:</b>	Bayswater Exploration & Production, LLC	<b>TVD Reference:</b>	KB @ 5096.0usft (Original Well Elev)
<b>Project:</b>	DJ Basin	<b>MD Reference:</b>	KB @ 5096.0usft (Original Well Elev)
<b>Site:</b>	Blehm Pad	<b>North Reference:</b>	True
<b>Well:</b>	BLEHM_06	<b>Survey Calculation Method:</b>	Minimum Curvature
<b>Wellbore:</b>	Wellbore #1		
<b>Design:</b>	Design #1		

<b>Project</b>	DJ Basin, DJ Basin		
<b>Map System:</b>	US State Plane 1983	<b>System Datum:</b>	Mean Sea Level
<b>Geo Datum:</b>	North American Datum 1983		
<b>Map Zone:</b>	Colorado Northern Zone		

Site		Blehm Pad			
Site Position:		Northing:	1,453,063.27 usft	Latitude:	40° 34' 30.382 N
From:	Lat/Long	Easting:	3,187,154.31 usft	Longitude:	104° 49' 34.572 W
Position Uncertainty:	0.0 usft	Slot Radius:	13-3/16 "	Grid Convergence:	0.44 °

Well	BLEHM_06					
Well Position	+N/-S	-270.7 usft	Northing:	1,452,793.31 usft	Latitude:	40° 34' 27.707 N
	+E/-W	96.1 usft	Easting:	3,187,252.48 usft	Longitude:	104° 49' 33.326 W
Position Uncertainty		0.0 usft	Wellhead Elevation:		Ground Level:	5,076.0 usft

<b>Wellbore</b>	Wellbore #1				
<b>Magnetics</b>	<b>Model Name</b>	<b>Sample Date</b>	<b>Declination (°)</b>	<b>Dip Angle (°)</b>	<b>Field Strength (nT)</b>
	IGRF2015	5/26/2021	7.84	66.88	52,024.20189869

Design	Design #1			
Audit Notes:				
Version:	Phase:	PLAN	Tie On Depth:	0.0
Vertical Section:	Depth From (TVD) (usft)	+N/-S (usft)	+E/-W (usft)	Direction (°)
	0.0	0.0	0.0	271.33

<b>Plan Survey Tool Program</b>	<b>Date</b>	5/26/2021			
<b>Depth From (usft)</b>	<b>Depth To (usft)</b>	<b>Survey (Wellbore)</b>	<b>Tool Name</b>	<b>Remarks</b>	
1	0.0	17,489.1	Design #1 (Wellbore #1)	MWD	
			OWSG MWD - Standard		

<b>Plan Sections</b>										
<b>Measured Depth (usft)</b>	<b>Inclination (°)</b>	<b>Azimuth (°)</b>	<b>Vertical Depth (usft)</b>	<b>+N/-S (usft)</b>	<b>+E/-W (usft)</b>	<b>Dogleg Rate (°/100usft)</b>	<b>Build Rate (°/100usft)</b>	<b>Turn Rate (°/100usft)</b>	<b>TFO (°)</b>	<b>Target</b>
0.0	0.00	0.00	0.0	0.0	0.0	0.00	0.00	0.00	0.00	
1,500.0	0.00	0.00	1,500.0	0.0	0.0	0.00	0.00	0.00	0.00	
2,525.8	20.52	281.59	2,504.0	36.5	-178.0	2.00	2.00	0.00	281.59	
5,937.3	20.52	281.59	5,699.1	276.7	-1,349.2	0.00	0.00	0.00	0.00	
6,963.1	0.00	269.77	6,703.1	313.2	-1,527.3	2.00	-2.00	0.00	180.00	
7,873.8	91.07	269.77	7,276.0	310.9	-2,110.9	10.00	10.00	0.00	0.00	BLEHM_06 LP
17,489.1	91.07	269.77	7,096.0	272.0	-11,724.4	0.00	0.00	0.00	0.00	BLEHM_06 PBHL

# Bayswater Exploration & Production LLC

## Planning Report

<b>Database:</b>	edm	<b>Local Co-ordinate Reference:</b>	Well BLEHM_06
<b>Company:</b>	Bayswater Exploration & Production, LLC	<b>TVD Reference:</b>	KB @ 5096.0usft (Original Well Elev)
<b>Project:</b>	DJ Basin	<b>MD Reference:</b>	KB @ 5096.0usft (Original Well Elev)
<b>Site:</b>	Blehm Pad	<b>North Reference:</b>	True
<b>Well:</b>	BLEHM_06	<b>Survey Calculation Method:</b>	Minimum Curvature
<b>Wellbore:</b>	Wellbore #1		
<b>Design:</b>	Design #1		

Planned Survey									
Measured Depth (usft)	Inclination (°)	Azimuth (°)	Vertical Depth (usft)	+N/-S (usft)	+E/-W (usft)	Vertical Section (usft)	Dogleg Rate (°/100usft)	Build Rate (°/100usft)	Turn Rate (°/100usft)
0.0	0.00	0.00	0.0	0.0	0.0	0.0	0.00	0.00	0.00
100.0	0.00	0.00	100.0	0.0	0.0	0.0	0.00	0.00	0.00
200.0	0.00	0.00	200.0	0.0	0.0	0.0	0.00	0.00	0.00
300.0	0.00	0.00	300.0	0.0	0.0	0.0	0.00	0.00	0.00
400.0	0.00	0.00	400.0	0.0	0.0	0.0	0.00	0.00	0.00
500.0	0.00	0.00	500.0	0.0	0.0	0.0	0.00	0.00	0.00
600.0	0.00	0.00	600.0	0.0	0.0	0.0	0.00	0.00	0.00
700.0	0.00	0.00	700.0	0.0	0.0	0.0	0.00	0.00	0.00
800.0	0.00	0.00	800.0	0.0	0.0	0.0	0.00	0.00	0.00
900.0	0.00	0.00	900.0	0.0	0.0	0.0	0.00	0.00	0.00
1,000.0	0.00	0.00	1,000.0	0.0	0.0	0.0	0.00	0.00	0.00
1,100.0	0.00	0.00	1,100.0	0.0	0.0	0.0	0.00	0.00	0.00
1,200.0	0.00	0.00	1,200.0	0.0	0.0	0.0	0.00	0.00	0.00
1,300.0	0.00	0.00	1,300.0	0.0	0.0	0.0	0.00	0.00	0.00
1,400.0	0.00	0.00	1,400.0	0.0	0.0	0.0	0.00	0.00	0.00
1,500.0	0.00	0.00	1,500.0	0.0	0.0	0.0	0.00	0.00	0.00
1,600.0	2.00	281.59	1,600.0	0.4	-1.7	1.7	2.00	2.00	0.00
1,700.0	4.00	281.59	1,699.8	1.4	-6.8	6.9	2.00	2.00	0.00
1,800.0	6.00	281.59	1,799.5	3.2	-15.4	15.4	2.00	2.00	0.00
1,900.0	8.00	281.59	1,898.7	5.6	-27.3	27.4	2.00	2.00	0.00
2,000.0	10.00	281.59	1,997.5	8.7	-42.6	42.8	2.00	2.00	0.00
2,100.0	12.00	281.59	2,095.6	12.6	-61.3	61.6	2.00	2.00	0.00
2,200.0	14.00	281.59	2,193.1	17.1	-83.4	83.7	2.00	2.00	0.00
2,300.0	16.00	281.59	2,289.6	22.3	-108.7	109.2	2.00	2.00	0.00
2,400.0	18.00	281.59	2,385.3	28.2	-137.4	138.0	2.00	2.00	0.00
2,500.0	20.00	281.59	2,479.8	34.7	-169.2	170.0	2.00	2.00	0.00
2,525.8	20.52	281.59	2,504.0	36.5	-178.0	178.8	2.00	2.00	0.00
2,600.0	20.52	281.59	2,573.5	41.7	-203.5	204.4	0.00	0.00	0.00
2,700.0	20.52	281.59	2,667.2	48.8	-237.8	238.9	0.00	0.00	0.00
2,800.0	20.52	281.59	2,760.8	55.8	-272.1	273.4	0.00	0.00	0.00
2,900.0	20.52	281.59	2,854.5	62.9	-306.5	307.8	0.00	0.00	0.00
3,000.0	20.52	281.59	2,948.1	69.9	-340.8	342.3	0.00	0.00	0.00
3,100.0	20.52	281.59	3,041.8	76.9	-375.1	376.8	0.00	0.00	0.00
3,200.0	20.52	281.59	3,135.5	84.0	-409.5	411.3	0.00	0.00	0.00
3,300.0	20.52	281.59	3,229.1	91.0	-443.8	445.8	0.00	0.00	0.00
3,400.0	20.52	281.59	3,322.8	98.1	-478.1	480.3	0.00	0.00	0.00
3,500.0	20.52	281.59	3,416.4	105.1	-512.5	514.8	0.00	0.00	0.00
3,600.0	20.52	281.59	3,510.1	112.1	-546.8	549.3	0.00	0.00	0.00
3,700.0	20.52	281.59	3,603.7	119.2	-581.1	583.7	0.00	0.00	0.00
3,800.0	20.52	281.59	3,697.4	126.2	-615.5	618.2	0.00	0.00	0.00
3,900.0	20.52	281.59	3,791.1	133.3	-649.8	652.7	0.00	0.00	0.00
4,000.0	20.52	281.59	3,884.7	140.3	-684.1	687.2	0.00	0.00	0.00
4,100.0	20.52	281.59	3,978.4	147.3	-718.5	721.7	0.00	0.00	0.00
4,200.0	20.52	281.59	4,072.0	154.4	-752.8	756.2	0.00	0.00	0.00
4,300.0	20.52	281.59	4,165.7	161.4	-787.1	790.7	0.00	0.00	0.00
4,400.0	20.52	281.59	4,259.3	168.5	-821.5	825.1	0.00	0.00	0.00
4,500.0	20.52	281.59	4,353.0	175.5	-855.8	859.6	0.00	0.00	0.00
4,600.0	20.52	281.59	4,446.7	182.6	-890.1	894.1	0.00	0.00	0.00
4,700.0	20.52	281.59	4,540.3	189.6	-924.5	928.6	0.00	0.00	0.00
4,800.0	20.52	281.59	4,634.0	196.6	-958.8	963.1	0.00	0.00	0.00
4,900.0	20.52	281.59	4,727.6	203.7	-993.1	997.6	0.00	0.00	0.00
5,000.0	20.52	281.59	4,821.3	210.7	-1,027.5	1,032.1	0.00	0.00	0.00
5,100.0	20.52	281.59	4,914.9	217.8	-1,061.8	1,066.6	0.00	0.00	0.00
5,200.0	20.52	281.59	5,008.6	224.8	-1,096.1	1,101.0	0.00	0.00	0.00

# Bayswater Exploration & Production LLC

## Planning Report

<b>Database:</b>	edm	<b>Local Co-ordinate Reference:</b>	Well BLEHM_06
<b>Company:</b>	Bayswater Exploration & Production, LLC	<b>TVD Reference:</b>	KB @ 5096.0usft (Original Well Elev)
<b>Project:</b>	DJ Basin	<b>MD Reference:</b>	KB @ 5096.0usft (Original Well Elev)
<b>Site:</b>	Blehm Pad	<b>North Reference:</b>	True
<b>Well:</b>	BLEHM_06	<b>Survey Calculation Method:</b>	Minimum Curvature
<b>Wellbore:</b>	Wellbore #1		
<b>Design:</b>	Design #1		

Planned Survey										
Measured Depth (usft)	Inclination (°)	Azimuth (°)	Vertical Depth (usft)	+N/-S (usft)	+E/-W (usft)	Vertical Section (usft)	Dogleg Rate (°/100usft)	Build Rate (°/100usft)	Turn Rate (°/100usft)	
5,300.0	20.52	281.59	5,102.3	231.8	-1,130.5	1,135.5	0.00	0.00	0.00	
5,400.0	20.52	281.59	5,195.9	238.9	-1,164.8	1,170.0	0.00	0.00	0.00	
5,500.0	20.52	281.59	5,289.6	245.9	-1,199.1	1,204.5	0.00	0.00	0.00	
5,600.0	20.52	281.59	5,383.2	253.0	-1,233.5	1,239.0	0.00	0.00	0.00	
5,700.0	20.52	281.59	5,476.9	260.0	-1,267.8	1,273.5	0.00	0.00	0.00	
5,800.0	20.52	281.59	5,570.5	267.0	-1,302.1	1,308.0	0.00	0.00	0.00	
5,900.0	20.52	281.59	5,664.2	274.1	-1,336.5	1,342.5	0.00	0.00	0.00	
5,937.3	20.52	281.59	5,699.1	276.7	-1,349.2	1,355.3	0.00	0.00	0.00	
6,000.0	19.26	281.59	5,758.1	281.0	-1,370.2	1,376.3	2.00	-2.00	0.00	
6,100.0	17.26	281.59	5,853.1	287.3	-1,400.8	1,407.1	2.00	-2.00	0.00	
6,200.0	15.26	281.59	5,949.0	292.9	-1,428.3	1,434.7	2.00	-2.00	0.00	
6,300.0	13.26	281.59	6,046.0	297.9	-1,452.4	1,458.9	2.00	-2.00	0.00	
6,400.0	11.26	281.59	6,143.7	302.1	-1,473.2	1,479.8	2.00	-2.00	0.00	
6,500.0	9.26	281.59	6,242.1	305.7	-1,490.7	1,497.4	2.00	-2.00	0.00	
6,600.0	7.26	281.59	6,341.0	308.6	-1,504.7	1,511.5	2.00	-2.00	0.00	
6,700.0	5.26	281.59	6,440.4	310.8	-1,515.4	1,522.2	2.00	-2.00	0.00	
6,800.0	3.26	281.59	6,540.1	312.3	-1,522.7	1,529.5	2.00	-2.00	0.00	
6,900.0	1.26	281.59	6,640.1	313.1	-1,526.6	1,533.4	2.00	-2.00	0.00	
6,963.1	0.00	269.77	6,703.1	313.2	-1,527.3	1,534.1	2.00	-2.00	0.00	
7,000.0	3.69	269.77	6,740.0	313.2	-1,528.4	1,535.3	10.00	10.00	0.00	
7,100.0	13.69	269.77	6,838.8	313.1	-1,543.5	1,550.4	10.00	10.00	0.00	
7,200.0	23.69	269.77	6,933.4	313.0	-1,575.5	1,582.4	10.00	10.00	0.00	
7,300.0	33.69	269.77	7,021.0	312.8	-1,623.5	1,630.3	10.00	10.00	0.00	
7,400.0	43.69	269.77	7,098.9	312.6	-1,685.9	1,692.7	10.00	10.00	0.00	
7,500.0	53.69	269.77	7,164.9	312.3	-1,760.9	1,767.7	10.00	10.00	0.00	
7,600.0	63.69	269.77	7,216.8	311.9	-1,846.3	1,853.0	10.00	10.00	0.00	
7,700.0	73.69	269.77	7,253.0	311.6	-1,939.3	1,946.0	10.00	10.00	0.00	
7,800.0	83.69	269.77	7,272.6	311.2	-2,037.2	2,043.9	10.00	10.00	0.00	
7,873.8	91.07	269.77	7,276.0	310.9	-2,110.9	2,117.6	10.00	10.00	0.00	
7,900.0	91.07	269.77	7,275.5	310.8	-2,137.1	2,143.7	0.00	0.00	0.00	
8,000.0	91.07	269.77	7,273.6	310.3	-2,237.1	2,243.7	0.00	0.00	0.00	
8,100.0	91.07	269.77	7,271.8	309.9	-2,337.1	2,343.6	0.00	0.00	0.00	
8,200.0	91.07	269.77	7,269.9	309.5	-2,437.1	2,443.6	0.00	0.00	0.00	
8,300.0	91.07	269.77	7,268.0	309.1	-2,537.0	2,543.5	0.00	0.00	0.00	
8,400.0	91.07	269.77	7,266.1	308.7	-2,637.0	2,643.5	0.00	0.00	0.00	
8,500.0	91.07	269.77	7,264.3	308.3	-2,737.0	2,743.4	0.00	0.00	0.00	
8,600.0	91.07	269.77	7,262.4	307.9	-2,837.0	2,843.4	0.00	0.00	0.00	
8,700.0	91.07	269.77	7,260.5	307.5	-2,937.0	2,943.3	0.00	0.00	0.00	
8,800.0	91.07	269.77	7,258.7	307.1	-3,036.9	3,043.3	0.00	0.00	0.00	
8,900.0	91.07	269.77	7,256.8	306.7	-3,136.9	3,143.2	0.00	0.00	0.00	
9,000.0	91.07	269.77	7,254.9	306.3	-3,236.9	3,243.1	0.00	0.00	0.00	
9,100.0	91.07	269.77	7,253.0	305.9	-3,336.9	3,343.1	0.00	0.00	0.00	
9,200.0	91.07	269.77	7,251.2	305.5	-3,436.9	3,443.0	0.00	0.00	0.00	
9,300.0	91.07	269.77	7,249.3	305.1	-3,536.9	3,543.0	0.00	0.00	0.00	
9,400.0	91.07	269.77	7,247.4	304.7	-3,636.8	3,642.9	0.00	0.00	0.00	
9,500.0	91.07	269.77	7,245.6	304.3	-3,736.8	3,742.9	0.00	0.00	0.00	
9,600.0	91.07	269.77	7,243.7	303.9	-3,836.8	3,842.8	0.00	0.00	0.00	
9,700.0	91.07	269.77	7,241.8	303.5	-3,936.8	3,942.8	0.00	0.00	0.00	
9,800.0	91.07	269.77	7,239.9	303.1	-4,036.8	4,042.7	0.00	0.00	0.00	
9,900.0	91.07	269.77	7,238.1	302.7	-4,136.7	4,142.7	0.00	0.00	0.00	
10,000.0	91.07	269.77	7,236.2	302.3	-4,236.7	4,242.6	0.00	0.00	0.00	
10,100.0	91.07	269.77	7,234.3	301.9	-4,336.7	4,342.5	0.00	0.00	0.00	
10,200.0	91.07	269.77	7,232.5	301.5	-4,436.7	4,442.5	0.00	0.00	0.00	
10,300.0	91.07	269.77	7,230.6	301.1	-4,536.7	4,542.4	0.00	0.00	0.00	

# Bayswater Exploration & Production LLC

## Planning Report

<b>Database:</b>	edm	<b>Local Co-ordinate Reference:</b>	Well BLEHM_06
<b>Company:</b>	Bayswater Exploration & Production, LLC	<b>TVD Reference:</b>	KB @ 5096.0usft (Original Well Elev)
<b>Project:</b>	DJ Basin	<b>MD Reference:</b>	KB @ 5096.0usft (Original Well Elev)
<b>Site:</b>	Blehm Pad	<b>North Reference:</b>	True
<b>Well:</b>	BLEHM_06	<b>Survey Calculation Method:</b>	Minimum Curvature
<b>Wellbore:</b>	Wellbore #1		
<b>Design:</b>	Design #1		

Planned Survey										
Measured Depth (usft)	Inclination (°)	Azimuth (°)	Vertical Depth (usft)	+N/-S (usft)	+E/-W (usft)	Vertical Section (usft)	Dogleg Rate (°/100usft)	Build Rate (°/100usft)	Turn Rate (°/100usft)	
10,400.0	91.07	269.77	7,228.7	300.7	-4,636.7	4,642.4	0.00	0.00	0.00	
10,500.0	91.07	269.77	7,226.8	300.3	-4,736.6	4,742.3	0.00	0.00	0.00	
10,600.0	91.07	269.77	7,225.0	299.8	-4,836.6	4,842.3	0.00	0.00	0.00	
10,700.0	91.07	269.77	7,223.1	299.4	-4,936.6	4,942.2	0.00	0.00	0.00	
10,800.0	91.07	269.77	7,221.2	299.0	-5,036.6	5,042.2	0.00	0.00	0.00	
10,900.0	91.07	269.77	7,219.3	298.6	-5,136.6	5,142.1	0.00	0.00	0.00	
11,000.0	91.07	269.77	7,217.5	298.2	-5,236.5	5,242.1	0.00	0.00	0.00	
11,100.0	91.07	269.77	7,215.6	297.8	-5,336.5	5,342.0	0.00	0.00	0.00	
11,200.0	91.07	269.77	7,213.7	297.4	-5,436.5	5,441.9	0.00	0.00	0.00	
11,300.0	91.07	269.77	7,211.9	297.0	-5,536.5	5,541.9	0.00	0.00	0.00	
11,400.0	91.07	269.77	7,210.0	296.6	-5,636.5	5,641.8	0.00	0.00	0.00	
11,500.0	91.07	269.77	7,208.1	296.2	-5,736.5	5,741.8	0.00	0.00	0.00	
11,600.0	91.07	269.77	7,206.2	295.8	-5,836.4	5,841.7	0.00	0.00	0.00	
11,700.0	91.07	269.77	7,204.4	295.4	-5,936.4	5,941.7	0.00	0.00	0.00	
11,800.0	91.07	269.77	7,202.5	295.0	-6,036.4	6,041.6	0.00	0.00	0.00	
11,900.0	91.07	269.77	7,200.6	294.6	-6,136.4	6,141.6	0.00	0.00	0.00	
12,000.0	91.07	269.77	7,198.8	294.2	-6,236.4	6,241.5	0.00	0.00	0.00	
12,100.0	91.07	269.77	7,196.9	293.8	-6,336.3	6,341.5	0.00	0.00	0.00	
12,200.0	91.07	269.77	7,195.0	293.4	-6,436.3	6,441.4	0.00	0.00	0.00	
12,300.0	91.07	269.77	7,193.1	293.0	-6,536.3	6,541.3	0.00	0.00	0.00	
12,400.0	91.07	269.77	7,191.3	292.6	-6,636.3	6,641.3	0.00	0.00	0.00	
12,500.0	91.07	269.77	7,189.4	292.2	-6,736.3	6,741.2	0.00	0.00	0.00	
12,600.0	91.07	269.77	7,187.5	291.8	-6,836.3	6,841.2	0.00	0.00	0.00	
12,700.0	91.07	269.77	7,185.7	291.4	-6,936.2	6,941.1	0.00	0.00	0.00	
12,800.0	91.07	269.77	7,183.8	291.0	-7,036.2	7,041.1	0.00	0.00	0.00	
12,900.0	91.07	269.77	7,181.9	290.6	-7,136.2	7,141.0	0.00	0.00	0.00	
13,000.0	91.07	269.77	7,180.0	290.2	-7,236.2	7,241.0	0.00	0.00	0.00	
13,100.0	91.07	269.77	7,178.2	289.8	-7,336.2	7,340.9	0.00	0.00	0.00	
13,200.0	91.07	269.77	7,176.3	289.3	-7,436.1	7,440.9	0.00	0.00	0.00	
13,300.0	91.07	269.77	7,174.4	288.9	-7,536.1	7,540.8	0.00	0.00	0.00	
13,400.0	91.07	269.77	7,172.5	288.5	-7,636.1	7,640.7	0.00	0.00	0.00	
13,500.0	91.07	269.77	7,170.7	288.1	-7,736.1	7,740.7	0.00	0.00	0.00	
13,600.0	91.07	269.77	7,168.8	287.7	-7,836.1	7,840.6	0.00	0.00	0.00	
13,700.0	91.07	269.77	7,166.9	287.3	-7,936.0	7,940.6	0.00	0.00	0.00	
13,800.0	91.07	269.77	7,165.1	286.9	-8,036.0	8,040.5	0.00	0.00	0.00	
13,900.0	91.07	269.77	7,163.2	286.5	-8,136.0	8,140.5	0.00	0.00	0.00	
14,000.0	91.07	269.77	7,161.3	286.1	-8,236.0	8,240.4	0.00	0.00	0.00	
14,100.0	91.07	269.77	7,159.4	285.7	-8,336.0	8,340.4	0.00	0.00	0.00	
14,200.0	91.07	269.77	7,157.6	285.3	-8,436.0	8,440.3	0.00	0.00	0.00	
14,300.0	91.07	269.77	7,155.7	284.9	-8,535.9	8,540.3	0.00	0.00	0.00	
14,400.0	91.07	269.77	7,153.8	284.5	-8,635.9	8,640.2	0.00	0.00	0.00	
14,500.0	91.07	269.77	7,152.0	284.1	-8,735.9	8,740.1	0.00	0.00	0.00	
14,600.0	91.07	269.77	7,150.1	283.7	-8,835.9	8,840.1	0.00	0.00	0.00	
14,700.0	91.07	269.77	7,148.2	283.3	-8,935.9	8,940.0	0.00	0.00	0.00	
14,800.0	91.07	269.77	7,146.3	282.9	-9,035.8	9,040.0	0.00	0.00	0.00	
14,900.0	91.07	269.77	7,144.5	282.5	-9,135.8	9,139.9	0.00	0.00	0.00	
15,000.0	91.07	269.77	7,142.6	282.1	-9,235.8	9,239.9	0.00	0.00	0.00	
15,100.0	91.07	269.77	7,140.7	281.7	-9,335.8	9,339.8	0.00	0.00	0.00	
15,200.0	91.07	269.77	7,138.9	281.3	-9,435.8	9,439.8	0.00	0.00	0.00	
15,300.0	91.07	269.77	7,137.0	280.9	-9,535.8	9,539.7	0.00	0.00	0.00	
15,400.0	91.07	269.77	7,135.1	280.5	-9,635.7	9,639.7	0.00	0.00	0.00	
15,500.0	91.07	269.77	7,133.2	280.1	-9,735.7	9,739.6	0.00	0.00	0.00	
15,600.0	91.07	269.77	7,131.4	279.7	-9,835.7	9,839.5	0.00	0.00	0.00	
15,700.0	91.07	269.77	7,129.5	279.3	-9,935.7	9,939.5	0.00	0.00	0.00	

# Bayswater Exploration & Production LLC

## Planning Report

<b>Database:</b>	edm	<b>Local Co-ordinate Reference:</b>	Well BLEHM_06
<b>Company:</b>	Bayswater Exploration & Production, LLC	<b>TVD Reference:</b>	KB @ 5096.0usft (Original Well Elev)
<b>Project:</b>	DJ Basin	<b>MD Reference:</b>	KB @ 5096.0usft (Original Well Elev)
<b>Site:</b>	Blehm Pad	<b>North Reference:</b>	True
<b>Well:</b>	BLEHM_06	<b>Survey Calculation Method:</b>	Minimum Curvature
<b>Wellbore:</b>	Wellbore #1		
<b>Design:</b>	Design #1		

Planned Survey										
Measured Depth (usft)	Inclination (°)	Azimuth (°)	Vertical Depth (usft)	+N/-S (usft)	+E/-W (usft)	Vertical Section (usft)	Dogleg Rate (°/100usft)	Build Rate (°/100usft)	Turn Rate (°/100usft)	
15,800.0	91.07	269.77	7,127.6	278.8	-10,035.7	10,039.4	0.00	0.00	0.00	
15,900.0	91.07	269.77	7,125.7	278.4	-10,135.6	10,139.4	0.00	0.00	0.00	
16,000.0	91.07	269.77	7,123.9	278.0	-10,235.6	10,239.3	0.00	0.00	0.00	
16,100.0	91.07	269.77	7,122.0	277.6	-10,335.6	10,339.3	0.00	0.00	0.00	
16,200.0	91.07	269.77	7,120.1	277.2	-10,435.6	10,439.2	0.00	0.00	0.00	
16,300.0	91.07	269.77	7,118.3	276.8	-10,535.6	10,539.2	0.00	0.00	0.00	
16,400.0	91.07	269.77	7,116.4	276.4	-10,635.6	10,639.1	0.00	0.00	0.00	
16,500.0	91.07	269.77	7,114.5	276.0	-10,735.5	10,739.1	0.00	0.00	0.00	
16,600.0	91.07	269.77	7,112.6	275.6	-10,835.5	10,839.0	0.00	0.00	0.00	
16,700.0	91.07	269.77	7,110.8	275.2	-10,935.5	10,938.9	0.00	0.00	0.00	
16,800.0	91.07	269.77	7,108.9	274.8	-11,035.5	11,038.9	0.00	0.00	0.00	
16,900.0	91.07	269.77	7,107.0	274.4	-11,135.5	11,138.8	0.00	0.00	0.00	
17,000.0	91.07	269.77	7,105.2	274.0	-11,235.4	11,238.8	0.00	0.00	0.00	
17,100.0	91.07	269.77	7,103.3	273.6	-11,335.4	11,338.7	0.00	0.00	0.00	
17,200.0	91.07	269.77	7,101.4	273.2	-11,435.4	11,438.7	0.00	0.00	0.00	
17,300.0	91.07	269.77	7,099.5	272.8	-11,535.4	11,538.6	0.00	0.00	0.00	
17,400.0	91.07	269.77	7,097.7	272.4	-11,635.4	11,638.6	0.00	0.00	0.00	
17,489.1	91.07	269.77	7,096.0	272.0	-11,724.4	11,727.6	0.00	0.00	0.00	
20" Casing										

Design Targets									
Target Name	Dip Angle (°)	Dip Dir. (°)	TVD (usft)	+N/-S (usft)	+E/-W (usft)	Northing (usft)	Easting (usft)	Latitude	Longitude
- hit/miss target									
- Shape									
BLEHM_06 PBHL	0.00	0.00	7,096.0	272.0	-11,724.4	1,452,976.21	3,175,526.30	40° 34' 30.367 N	104° 52' 5.268 W
- plan hits target center									
- Point									
BLEHM_06 LP	0.00	0.00	7,276.0	310.9	-2,110.9	1,453,088.11	3,185,139.25	40° 34' 30.778 N	104° 50' 0.683 W
- plan hits target center									
- Point									

Casing Points					
Measured Depth (usft)	Vertical Depth (usft)	Name	Casing Diameter (")	Hole Diameter (")	
17,489.1	7,096.0	20" Casing	20	24	