



Pad Name: Blehm Pad  
Well Name: BLEHM\_07  
Ground Level: 5076.0  
SHL Latitude: 40° 34' 27.638 N  
SHL Longitude: 104° 49' 33.157 W

## SECTION DETAILS

Sec	MD	Inc	Azi	TVD	+N/-S	+E/-W	Dleg	TFace	Vsect	Target
1	0.0	0.00	0.00	0.0	0.0	0.0	0.00	0.00	0.0	
2	1500.0	0.00	0.00	1500.0	0.0	0.0	0.00	0.00	0.0	
3	2491.9	19.84	265.55	2472.2	-13.2	-169.5	2.00	265.55	169.7	
4	6046.6	19.84	265.55	5815.9	-106.8	-1372.2	0.00	0.00	1373.6	
5	7038.5	0.00	269.77	6788.1	-120.0	-1541.7	2.00	180.00	1543.2	
6	7949.2	91.07	269.77	7361.0	-122.3	-2125.4	10.00	0.00	2126.9	BLEHM_07 LP
7	17563.9	91.07	269.77	7181.0	-161.1	-11738.3	0.00	0.00	11739.4	BLEHM_07 PBHL

## DESIGN TARGET DETAILS

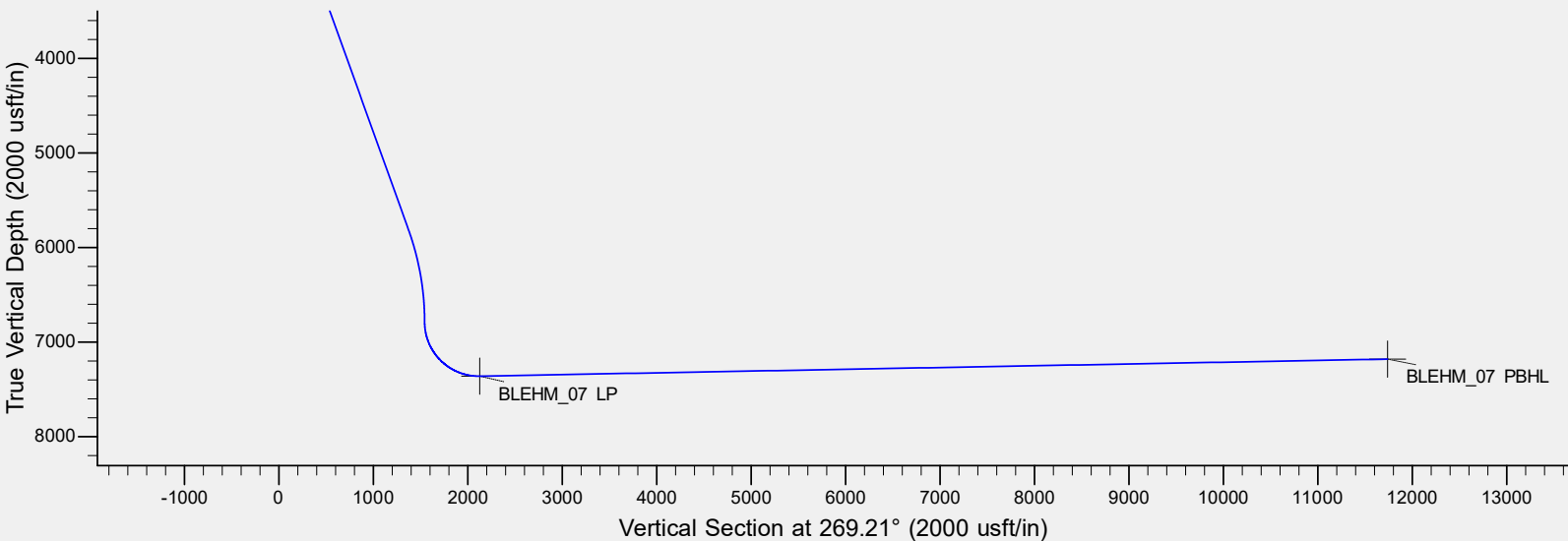
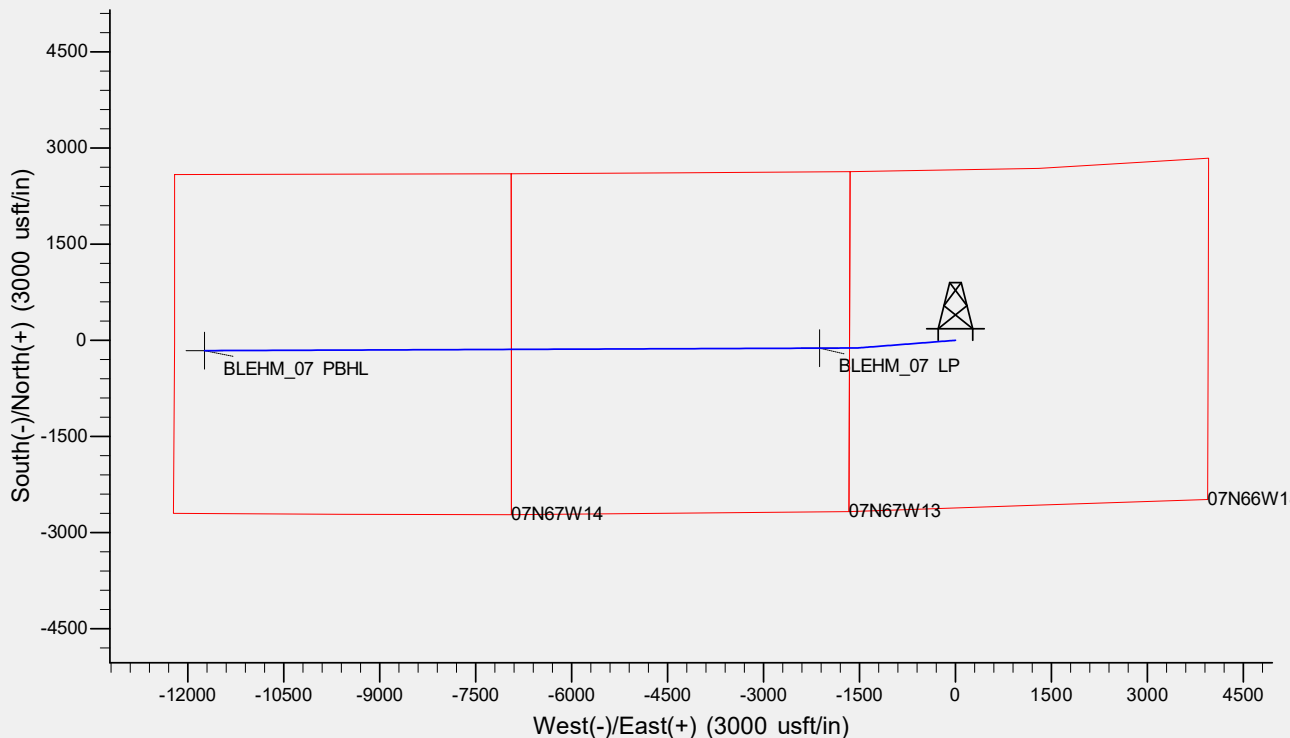
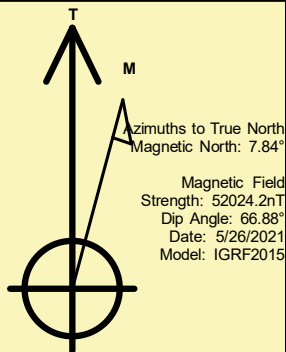
Name	TVD	+N/-S	+E/-W	Northing	Easting	Latitude	Longitude	Shape
BLEHM_07 LP	7361.0	-122.3	-2125.4	1452648.02	3185141.16	40° 34' 26.429 N	104° 50' 0.701 W	Point
BLEHM_07 PBHL	- plan hits target center 7181.0	-161.1	-11738.3	1452536.12	3175528.88	40° 34' 26.018 N	104° 52' 5.275 W	Point
	- plan hits target center							

## REFERENCE INFORMATION

Co-ordinate (N/E) Reference: Well BLEHM\_07, True North  
Vertical (TVD) Reference: KB @ 5096.0usft (Original Well Elev)  
Section (VS) Reference: Slot - (0.0N, 0.0E)  
Measured Depth Reference: KB @ 5096.0usft (Original Well Elev)  
Calculation Method: Minimum Curvature

## CASING DETAILS

No casing data is available



# **Bayswater Exploration & Production, LLC**

**DJ Basin**

**Blehm Pad**

**BLEHM\_07**

**Wellbore #1**

**Plan: Design #1**

## **Standard Planning Report**

**28 May, 2021**

# Bayswater Exploration & Production LLC

## Planning Report

<b>Database:</b>	edm	<b>Local Co-ordinate Reference:</b>	Well BLEHM_07
<b>Company:</b>	Bayswater Exploration & Production, LLC	<b>TVD Reference:</b>	KB @ 5096.0usft (Original Well Elev)
<b>Project:</b>	DJ Basin	<b>MD Reference:</b>	KB @ 5096.0usft (Original Well Elev)
<b>Site:</b>	Blehm Pad	<b>North Reference:</b>	True
<b>Well:</b>	BLEHM_07	<b>Survey Calculation Method:</b>	Minimum Curvature
<b>Wellbore:</b>	Wellbore #1		
<b>Design:</b>	Design #1		

<b>Project</b>	DJ Basin, DJ Basin		
<b>Map System:</b>	US State Plane 1983	<b>System Datum:</b>	Mean Sea Level
<b>Geo Datum:</b>	North American Datum 1983		
<b>Map Zone:</b>	Colorado Northern Zone		

Site		Blehm Pad			
Site Position:		Northing:	1,453,063.27 usft	Latitude:	40° 34' 30.382 N
From:	Lat/Long	Easting:	3,187,154.31 usft	Longitude:	104° 49' 34.572 W
Position Uncertainty:	0.0 usft	Slot Radius:	13-3/16 "	Grid Convergence:	0.44 °

Well	BLEHM_07					
Well Position	+N/-S	-277.6 usft	Northing:	1,452,786.49 usft	Latitude:	40° 34' 27.638 N
	+E/-W	109.2 usft	Easting:	3,187,265.59 usft	Longitude:	104° 49' 33.157 W
Position Uncertainty		0.0 usft	Wellhead Elevation:		Ground Level:	5,076.0 usft

<b>Wellbore</b>	Wellbore #1				
<b>Magnetics</b>	<b>Model Name</b>	<b>Sample Date</b>	<b>Declination (°)</b>	<b>Dip Angle (°)</b>	<b>Field Strength (nT)</b>
	IGRF2015	5/26/2021	7.84	66.88	52,024.19701579

<b>Design</b>	Design #1			
<b>Audit Notes:</b>				
<b>Version:</b>	<b>Phase:</b>	PLAN	<b>Tie On Depth:</b>	0.0
<b>Vertical Section:</b>	<b>Depth From (TVD) (usft)</b>	<b>+N/-S (usft)</b>	<b>+E/-W (usft)</b>	<b>Direction (°)</b>
	0.0	0.0	0.0	269.21

<b>Plan Survey Tool Program</b>	<b>Date</b>	5/26/2021		
<b>Depth From (usft)</b>	<b>Depth To (usft)</b>	<b>Survey (Wellbore)</b>	<b>Tool Name</b>	<b>Remarks</b>
1	0.0	17,563.9	Design #1 (Wellbore #1)	MWD
				OWSG MWD - Standard

<b>Plan Sections</b>										
<b>Measured Depth (usft)</b>	<b>Inclination (°)</b>	<b>Azimuth (°)</b>	<b>Vertical Depth (usft)</b>	<b>+N/-S (usft)</b>	<b>+E/-W (usft)</b>	<b>Dogleg Rate (°/100usft)</b>	<b>Build Rate (°/100usft)</b>	<b>Turn Rate (°/100usft)</b>	<b>TFO (°)</b>	<b>Target</b>
0.0	0.00	0.00	0.0	0.0	0.0	0.00	0.00	0.00	0.00	
1,500.0	0.00	0.00	1,500.0	0.0	0.0	0.00	0.00	0.00	0.00	
2,491.9	19.84	265.55	2,472.2	-13.2	-169.5	2.00	2.00	0.00	265.55	
6,046.6	19.84	265.55	5,815.9	-106.8	-1,372.2	0.00	0.00	0.00	0.00	
7,038.5	0.00	269.77	6,788.1	-120.0	-1,541.7	2.00	-2.00	0.00	180.00	
7,949.2	91.07	269.77	7,361.0	-122.3	-2,125.4	10.00	10.00	0.00	0.00	BLEHM_07 LP
17,563.9	91.07	269.77	7,181.0	-161.1	-11,738.3	0.00	0.00	0.00	0.00	BLEHM_07 PBHL

# Bayswater Exploration & Production LLC

## Planning Report

<b>Database:</b>	edm	<b>Local Co-ordinate Reference:</b>	Well BLEHM_07
<b>Company:</b>	Bayswater Exploration & Production, LLC	<b>TVD Reference:</b>	KB @ 5096.0usft (Original Well Elev)
<b>Project:</b>	DJ Basin	<b>MD Reference:</b>	KB @ 5096.0usft (Original Well Elev)
<b>Site:</b>	Blehm Pad	<b>North Reference:</b>	True
<b>Well:</b>	BLEHM_07	<b>Survey Calculation Method:</b>	Minimum Curvature
<b>Wellbore:</b>	Wellbore #1		
<b>Design:</b>	Design #1		

Planned Survey									
Measured Depth (usft)	Inclination (°)	Azimuth (°)	Vertical Depth (usft)	+N/-S (usft)	+E/-W (usft)	Vertical Section (usft)	Dogleg Rate (°/100usft)	Build Rate (°/100usft)	Turn Rate (°/100usft)
0.0	0.00	0.00	0.0	0.0	0.0	0.0	0.00	0.00	0.00
100.0	0.00	0.00	100.0	0.0	0.0	0.0	0.00	0.00	0.00
200.0	0.00	0.00	200.0	0.0	0.0	0.0	0.00	0.00	0.00
300.0	0.00	0.00	300.0	0.0	0.0	0.0	0.00	0.00	0.00
400.0	0.00	0.00	400.0	0.0	0.0	0.0	0.00	0.00	0.00
500.0	0.00	0.00	500.0	0.0	0.0	0.0	0.00	0.00	0.00
600.0	0.00	0.00	600.0	0.0	0.0	0.0	0.00	0.00	0.00
700.0	0.00	0.00	700.0	0.0	0.0	0.0	0.00	0.00	0.00
800.0	0.00	0.00	800.0	0.0	0.0	0.0	0.00	0.00	0.00
900.0	0.00	0.00	900.0	0.0	0.0	0.0	0.00	0.00	0.00
1,000.0	0.00	0.00	1,000.0	0.0	0.0	0.0	0.00	0.00	0.00
1,100.0	0.00	0.00	1,100.0	0.0	0.0	0.0	0.00	0.00	0.00
1,200.0	0.00	0.00	1,200.0	0.0	0.0	0.0	0.00	0.00	0.00
1,300.0	0.00	0.00	1,300.0	0.0	0.0	0.0	0.00	0.00	0.00
1,400.0	0.00	0.00	1,400.0	0.0	0.0	0.0	0.00	0.00	0.00
1,500.0	0.00	0.00	1,500.0	0.0	0.0	0.0	0.00	0.00	0.00
1,600.0	2.00	265.55	1,600.0	-0.1	-1.7	1.7	2.00	2.00	0.00
1,700.0	4.00	265.55	1,699.8	-0.5	-7.0	7.0	2.00	2.00	0.00
1,800.0	6.00	265.55	1,799.5	-1.2	-15.6	15.7	2.00	2.00	0.00
1,900.0	8.00	265.55	1,898.7	-2.2	-27.8	27.8	2.00	2.00	0.00
2,000.0	10.00	265.55	1,997.5	-3.4	-43.4	43.4	2.00	2.00	0.00
2,100.0	12.00	265.55	2,095.6	-4.9	-62.4	62.5	2.00	2.00	0.00
2,200.0	14.00	265.55	2,193.1	-6.6	-84.8	84.9	2.00	2.00	0.00
2,300.0	16.00	265.55	2,289.6	-8.6	-110.6	110.8	2.00	2.00	0.00
2,400.0	18.00	265.55	2,385.3	-10.9	-139.8	139.9	2.00	2.00	0.00
2,491.9	19.84	265.55	2,472.2	-13.2	-169.5	169.7	2.00	2.00	0.00
2,500.0	19.84	265.55	2,479.8	-13.4	-172.2	172.4	0.00	0.00	0.00
2,600.0	19.84	265.55	2,573.9	-16.0	-206.1	206.3	0.00	0.00	0.00
2,700.0	19.84	265.55	2,667.9	-18.7	-239.9	240.1	0.00	0.00	0.00
2,800.0	19.84	265.55	2,762.0	-21.3	-273.7	274.0	0.00	0.00	0.00
2,900.0	19.84	265.55	2,856.1	-23.9	-307.6	307.9	0.00	0.00	0.00
3,000.0	19.84	265.55	2,950.1	-26.6	-341.4	341.7	0.00	0.00	0.00
3,100.0	19.84	265.55	3,044.2	-29.2	-375.2	375.6	0.00	0.00	0.00
3,200.0	19.84	265.55	3,138.3	-31.8	-409.1	409.5	0.00	0.00	0.00
3,300.0	19.84	265.55	3,232.3	-34.5	-442.9	443.3	0.00	0.00	0.00
3,400.0	19.84	265.55	3,326.4	-37.1	-476.8	477.2	0.00	0.00	0.00
3,500.0	19.84	265.55	3,420.5	-39.7	-510.6	511.1	0.00	0.00	0.00
3,600.0	19.84	265.55	3,514.5	-42.4	-544.4	545.0	0.00	0.00	0.00
3,700.0	19.84	265.55	3,608.6	-45.0	-578.3	578.8	0.00	0.00	0.00
3,800.0	19.84	265.55	3,702.7	-47.6	-612.1	612.7	0.00	0.00	0.00
3,900.0	19.84	265.55	3,796.7	-50.3	-645.9	646.6	0.00	0.00	0.00
4,000.0	19.84	265.55	3,890.8	-52.9	-679.8	680.4	0.00	0.00	0.00
4,100.0	19.84	265.55	3,984.9	-55.5	-713.6	714.3	0.00	0.00	0.00
4,200.0	19.84	265.55	4,078.9	-58.2	-747.4	748.2	0.00	0.00	0.00
4,300.0	19.84	265.55	4,173.0	-60.8	-781.3	782.0	0.00	0.00	0.00
4,400.0	19.84	265.55	4,267.1	-63.4	-815.1	815.9	0.00	0.00	0.00
4,500.0	19.84	265.55	4,361.1	-66.1	-848.9	849.8	0.00	0.00	0.00
4,600.0	19.84	265.55	4,455.2	-68.7	-882.8	883.6	0.00	0.00	0.00
4,700.0	19.84	265.55	4,549.3	-71.3	-916.6	917.5	0.00	0.00	0.00
4,800.0	19.84	265.55	4,643.3	-73.9	-950.4	951.4	0.00	0.00	0.00
4,900.0	19.84	265.55	4,737.4	-76.6	-984.3	985.2	0.00	0.00	0.00
5,000.0	19.84	265.55	4,831.4	-79.2	-1,018.1	1,019.1	0.00	0.00	0.00
5,100.0	19.84	265.55	4,925.5	-81.8	-1,052.0	1,053.0	0.00	0.00	0.00
5,200.0	19.84	265.55	5,019.6	-84.5	-1,085.8	1,086.8	0.00	0.00	0.00

# Bayswater Exploration & Production LLC

## Planning Report

<b>Database:</b>	edm	<b>Local Co-ordinate Reference:</b>	Well BLEHM_07
<b>Company:</b>	Bayswater Exploration & Production, LLC	<b>TVD Reference:</b>	KB @ 5096.0usft (Original Well Elev)
<b>Project:</b>	DJ Basin	<b>MD Reference:</b>	KB @ 5096.0usft (Original Well Elev)
<b>Site:</b>	Blehm Pad	<b>North Reference:</b>	True
<b>Well:</b>	BLEHM_07	<b>Survey Calculation Method:</b>	Minimum Curvature
<b>Wellbore:</b>	Wellbore #1		
<b>Design:</b>	Design #1		

Planned Survey									
Measured Depth (usft)	Inclination (°)	Azimuth (°)	Vertical Depth (usft)	+N/-S (usft)	+E/-W (usft)	Vertical Section (usft)	Dogleg Rate (°/100usft)	Build Rate (°/100usft)	Turn Rate (°/100usft)
5,300.0	19.84	265.55	5,113.6	-87.1	-1,119.6	1,120.7	0.00	0.00	0.00
5,400.0	19.84	265.55	5,207.7	-89.7	-1,153.5	1,154.6	0.00	0.00	0.00
5,500.0	19.84	265.55	5,301.8	-92.4	-1,187.3	1,188.4	0.00	0.00	0.00
5,600.0	19.84	265.55	5,395.8	-95.0	-1,221.1	1,222.3	0.00	0.00	0.00
5,700.0	19.84	265.55	5,489.9	-97.6	-1,255.0	1,256.2	0.00	0.00	0.00
5,800.0	19.84	265.55	5,584.0	-100.3	-1,288.8	1,290.1	0.00	0.00	0.00
5,900.0	19.84	265.55	5,678.0	-102.9	-1,322.6	1,323.9	0.00	0.00	0.00
6,000.0	19.84	265.55	5,772.1	-105.5	-1,356.5	1,357.8	0.00	0.00	0.00
6,046.6	19.84	265.55	5,815.9	-106.8	-1,372.2	1,373.6	0.00	0.00	0.00
6,100.0	18.77	265.55	5,866.3	-108.1	-1,389.8	1,391.2	2.00	-2.00	0.00
6,200.0	16.77	265.55	5,961.6	-110.5	-1,420.3	1,421.6	2.00	-2.00	0.00
6,300.0	14.77	265.55	6,057.8	-112.6	-1,447.4	1,448.8	2.00	-2.00	0.00
6,400.0	12.77	265.55	6,154.9	-114.5	-1,471.1	1,472.5	2.00	-2.00	0.00
6,500.0	10.77	265.55	6,252.8	-116.0	-1,491.4	1,492.9	2.00	-2.00	0.00
6,600.0	8.77	265.55	6,351.3	-117.4	-1,508.3	1,509.8	2.00	-2.00	0.00
6,700.0	6.77	265.55	6,450.4	-118.4	-1,521.8	1,523.3	2.00	-2.00	0.00
6,800.0	4.77	265.55	6,549.9	-119.2	-1,531.8	1,533.3	2.00	-2.00	0.00
6,900.0	2.77	265.55	6,649.7	-119.7	-1,538.4	1,539.9	2.00	-2.00	0.00
7,000.0	0.77	265.55	6,749.6	-119.9	-1,541.5	1,543.0	2.00	-2.00	0.00
7,038.5	0.00	269.77	6,788.1	-120.0	-1,541.7	1,543.2	2.00	-2.00	0.00
7,100.0	6.15	269.77	6,849.5	-120.0	-1,545.0	1,546.5	10.00	10.00	0.00
7,200.0	16.15	269.77	6,947.5	-120.0	-1,564.3	1,565.8	10.00	10.00	0.00
7,300.0	26.15	269.77	7,040.6	-120.2	-1,600.4	1,601.9	10.00	10.00	0.00
7,400.0	36.15	269.77	7,126.1	-120.4	-1,652.0	1,653.5	10.00	10.00	0.00
7,500.0	46.15	269.77	7,201.3	-120.7	-1,717.8	1,719.2	10.00	10.00	0.00
7,600.0	56.15	269.77	7,264.0	-121.0	-1,795.5	1,797.0	10.00	10.00	0.00
7,700.0	66.15	269.77	7,312.2	-121.3	-1,883.0	1,884.5	10.00	10.00	0.00
7,800.0	76.15	269.77	7,344.4	-121.7	-1,977.5	1,979.0	10.00	10.00	0.00
7,900.0	86.15	269.77	7,359.8	-122.1	-2,076.2	2,077.7	10.00	10.00	0.00
7,949.2	91.07	269.77	7,361.0	-122.3	-2,125.4	2,126.9	10.00	10.00	0.00
8,000.0	91.07	269.77	7,360.0	-122.5	-2,176.2	2,177.6	0.00	0.00	0.00
8,100.0	91.07	269.77	7,358.2	-122.9	-2,276.1	2,277.6	0.00	0.00	0.00
8,200.0	91.07	269.77	7,356.3	-123.3	-2,376.1	2,377.6	0.00	0.00	0.00
8,300.0	91.07	269.77	7,354.4	-123.7	-2,476.1	2,477.6	0.00	0.00	0.00
8,400.0	91.07	269.77	7,352.6	-124.1	-2,576.1	2,577.6	0.00	0.00	0.00
8,500.0	91.07	269.77	7,350.7	-124.5	-2,676.1	2,677.5	0.00	0.00	0.00
8,600.0	91.07	269.77	7,348.8	-124.9	-2,776.1	2,777.5	0.00	0.00	0.00
8,700.0	91.07	269.77	7,346.9	-125.3	-2,876.0	2,877.5	0.00	0.00	0.00
8,800.0	91.07	269.77	7,345.1	-125.7	-2,976.0	2,977.5	0.00	0.00	0.00
8,900.0	91.07	269.77	7,343.2	-126.1	-3,076.0	3,077.4	0.00	0.00	0.00
9,000.0	91.07	269.77	7,341.3	-126.6	-3,176.0	3,177.4	0.00	0.00	0.00
9,100.0	91.07	269.77	7,339.5	-127.0	-3,276.0	3,277.4	0.00	0.00	0.00
9,200.0	91.07	269.77	7,337.6	-127.4	-3,375.9	3,377.4	0.00	0.00	0.00
9,300.0	91.07	269.77	7,335.7	-127.8	-3,475.9	3,477.4	0.00	0.00	0.00
9,400.0	91.07	269.77	7,333.8	-128.2	-3,575.9	3,577.3	0.00	0.00	0.00
9,500.0	91.07	269.77	7,332.0	-128.6	-3,675.9	3,677.3	0.00	0.00	0.00
9,600.0	91.07	269.77	7,330.1	-129.0	-3,775.9	3,777.3	0.00	0.00	0.00
9,700.0	91.07	269.77	7,328.2	-129.4	-3,875.9	3,877.3	0.00	0.00	0.00
9,800.0	91.07	269.77	7,326.4	-129.8	-3,975.8	3,977.2	0.00	0.00	0.00
9,900.0	91.07	269.77	7,324.5	-130.2	-4,075.8	4,077.2	0.00	0.00	0.00
10,000.0	91.07	269.77	7,322.6	-130.6	-4,175.8	4,177.2	0.00	0.00	0.00
10,100.0	91.07	269.77	7,320.7	-131.0	-4,275.8	4,277.2	0.00	0.00	0.00
10,200.0	91.07	269.77	7,318.9	-131.4	-4,375.8	4,377.2	0.00	0.00	0.00
10,300.0	91.07	269.77	7,317.0	-131.8	-4,475.7	4,477.1	0.00	0.00	0.00

# Bayswater Exploration & Production LLC

## Planning Report

<b>Database:</b>	edm	<b>Local Co-ordinate Reference:</b>	Well BLEHM_07
<b>Company:</b>	Bayswater Exploration & Production, LLC	<b>TVD Reference:</b>	KB @ 5096.0usft (Original Well Elev)
<b>Project:</b>	DJ Basin	<b>MD Reference:</b>	KB @ 5096.0usft (Original Well Elev)
<b>Site:</b>	Blehm Pad	<b>North Reference:</b>	True
<b>Well:</b>	BLEHM_07	<b>Survey Calculation Method:</b>	Minimum Curvature
<b>Wellbore:</b>	Wellbore #1		
<b>Design:</b>	Design #1		

Planned Survey										
Measured Depth (usft)	Inclination (°)	Azimuth (°)	Vertical Depth (usft)	+N/-S (usft)	+E/-W (usft)	Vertical Section (usft)	Dogleg Rate (°/100usft)	Build Rate (°/100usft)	Turn Rate (°/100usft)	
10,400.0	91.07	269.77	7,315.1	-132.2	-4,575.7	4,577.1	0.00	0.00	0.00	
10,500.0	91.07	269.77	7,313.2	-132.6	-4,675.7	4,677.1	0.00	0.00	0.00	
10,600.0	91.07	269.77	7,311.4	-133.0	-4,775.7	4,777.1	0.00	0.00	0.00	
10,700.0	91.07	269.77	7,309.5	-133.4	-4,875.7	4,877.0	0.00	0.00	0.00	
10,800.0	91.07	269.77	7,307.6	-133.8	-4,975.7	4,977.0	0.00	0.00	0.00	
10,900.0	91.07	269.77	7,305.8	-134.2	-5,075.6	5,077.0	0.00	0.00	0.00	
11,000.0	91.07	269.77	7,303.9	-134.6	-5,175.6	5,177.0	0.00	0.00	0.00	
11,100.0	91.07	269.77	7,302.0	-135.0	-5,275.6	5,277.0	0.00	0.00	0.00	
11,200.0	91.07	269.77	7,300.1	-135.4	-5,375.6	5,376.9	0.00	0.00	0.00	
11,300.0	91.07	269.77	7,298.3	-135.8	-5,475.6	5,476.9	0.00	0.00	0.00	
11,400.0	91.07	269.77	7,296.4	-136.2	-5,575.5	5,576.9	0.00	0.00	0.00	
11,500.0	91.07	269.77	7,294.5	-136.6	-5,675.5	5,676.9	0.00	0.00	0.00	
11,600.0	91.07	269.77	7,292.7	-137.1	-5,775.5	5,776.8	0.00	0.00	0.00	
11,700.0	91.07	269.77	7,290.8	-137.5	-5,875.5	5,876.8	0.00	0.00	0.00	
11,800.0	91.07	269.77	7,288.9	-137.9	-5,975.5	5,976.8	0.00	0.00	0.00	
11,900.0	91.07	269.77	7,287.0	-138.3	-6,075.5	6,076.8	0.00	0.00	0.00	
12,000.0	91.07	269.77	7,285.2	-138.7	-6,175.4	6,176.8	0.00	0.00	0.00	
12,100.0	91.07	269.77	7,283.3	-139.1	-6,275.4	6,276.7	0.00	0.00	0.00	
12,200.0	91.07	269.77	7,281.4	-139.5	-6,375.4	6,376.7	0.00	0.00	0.00	
12,300.0	91.07	269.77	7,279.5	-139.9	-6,475.4	6,476.7	0.00	0.00	0.00	
12,400.0	91.07	269.77	7,277.7	-140.3	-6,575.4	6,576.7	0.00	0.00	0.00	
12,500.0	91.07	269.77	7,275.8	-140.7	-6,675.3	6,676.6	0.00	0.00	0.00	
12,600.0	91.07	269.77	7,273.9	-141.1	-6,775.3	6,776.6	0.00	0.00	0.00	
12,700.0	91.07	269.77	7,272.1	-141.5	-6,875.3	6,876.6	0.00	0.00	0.00	
12,800.0	91.07	269.77	7,270.2	-141.9	-6,975.3	6,976.6	0.00	0.00	0.00	
12,900.0	91.07	269.77	7,268.3	-142.3	-7,075.3	7,076.6	0.00	0.00	0.00	
13,000.0	91.07	269.77	7,266.4	-142.7	-7,175.3	7,176.5	0.00	0.00	0.00	
13,100.0	91.07	269.77	7,264.6	-143.1	-7,275.2	7,276.5	0.00	0.00	0.00	
13,200.0	91.07	269.77	7,262.7	-143.5	-7,375.2	7,376.5	0.00	0.00	0.00	
13,300.0	91.07	269.77	7,260.8	-143.9	-7,475.2	7,476.5	0.00	0.00	0.00	
13,400.0	91.07	269.77	7,259.0	-144.3	-7,575.2	7,576.4	0.00	0.00	0.00	
13,500.0	91.07	269.77	7,257.1	-144.7	-7,675.2	7,676.4	0.00	0.00	0.00	
13,600.0	91.07	269.77	7,255.2	-145.1	-7,775.1	7,776.4	0.00	0.00	0.00	
13,700.0	91.07	269.77	7,253.3	-145.5	-7,875.1	7,876.4	0.00	0.00	0.00	
13,800.0	91.07	269.77	7,251.5	-145.9	-7,975.1	7,976.4	0.00	0.00	0.00	
13,900.0	91.07	269.77	7,249.6	-146.3	-8,075.1	8,076.3	0.00	0.00	0.00	
14,000.0	91.07	269.77	7,247.7	-146.7	-8,175.1	8,176.3	0.00	0.00	0.00	
14,100.0	91.07	269.77	7,245.8	-147.1	-8,275.0	8,276.3	0.00	0.00	0.00	
14,200.0	91.07	269.77	7,244.0	-147.6	-8,375.0	8,376.3	0.00	0.00	0.00	
14,300.0	91.07	269.77	7,242.1	-148.0	-8,475.0	8,476.2	0.00	0.00	0.00	
14,400.0	91.07	269.77	7,240.2	-148.4	-8,575.0	8,576.2	0.00	0.00	0.00	
14,500.0	91.07	269.77	7,238.4	-148.8	-8,675.0	8,676.2	0.00	0.00	0.00	
14,600.0	91.07	269.77	7,236.5	-149.2	-8,775.0	8,776.2	0.00	0.00	0.00	
14,700.0	91.07	269.77	7,234.6	-149.6	-8,874.9	8,876.2	0.00	0.00	0.00	
14,800.0	91.07	269.77	7,232.7	-150.0	-8,974.9	8,976.1	0.00	0.00	0.00	
14,900.0	91.07	269.77	7,230.9	-150.4	-9,074.9	9,076.1	0.00	0.00	0.00	
15,000.0	91.07	269.77	7,229.0	-150.8	-9,174.9	9,176.1	0.00	0.00	0.00	
15,100.0	91.07	269.77	7,227.1	-151.2	-9,274.9	9,276.1	0.00	0.00	0.00	
15,200.0	91.07	269.77	7,225.3	-151.6	-9,374.8	9,376.0	0.00	0.00	0.00	
15,300.0	91.07	269.77	7,223.4	-152.0	-9,474.8	9,476.0	0.00	0.00	0.00	
15,400.0	91.07	269.77	7,221.5	-152.4	-9,574.8	9,576.0	0.00	0.00	0.00	
15,500.0	91.07	269.77	7,219.6	-152.8	-9,674.8	9,676.0	0.00	0.00	0.00	
15,600.0	91.07	269.77	7,217.8	-153.2	-9,774.8	9,776.0	0.00	0.00	0.00	
15,700.0	91.07	269.77	7,215.9	-153.6	-9,874.8	9,875.9	0.00	0.00	0.00	

# Bayswater Exploration & Production LLC

## Planning Report

<b>Database:</b>	edm	<b>Local Co-ordinate Reference:</b>	Well BLEHM_07
<b>Company:</b>	Bayswater Exploration & Production, LLC	<b>TVD Reference:</b>	KB @ 5096.0usft (Original Well Elev)
<b>Project:</b>	DJ Basin	<b>MD Reference:</b>	KB @ 5096.0usft (Original Well Elev)
<b>Site:</b>	Blehm Pad	<b>North Reference:</b>	True
<b>Well:</b>	BLEHM_07	<b>Survey Calculation Method:</b>	Minimum Curvature
<b>Wellbore:</b>	Wellbore #1		
<b>Design:</b>	Design #1		

Planned Survey										
Measured Depth (usft)	Inclination (°)	Azimuth (°)	Vertical Depth (usft)	+N/-S (usft)	+E/-W (usft)	Vertical Section (usft)	Dogleg Rate (°/100usft)	Build Rate (°/100usft)	Turn Rate (°/100usft)	
15,800.0	91.07	269.77	7,214.0	-154.0	-9,974.7	9,975.9	0.00	0.00	0.00	
15,900.0	91.07	269.77	7,212.1	-154.4	-10,074.7	10,075.9	0.00	0.00	0.00	
16,000.0	91.07	269.77	7,210.3	-154.8	-10,174.7	10,175.9	0.00	0.00	0.00	
16,100.0	91.07	269.77	7,208.4	-155.2	-10,274.7	10,275.8	0.00	0.00	0.00	
16,200.0	91.07	269.77	7,206.5	-155.6	-10,374.7	10,375.8	0.00	0.00	0.00	
16,300.0	91.07	269.77	7,204.7	-156.0	-10,474.6	10,475.8	0.00	0.00	0.00	
16,400.0	91.07	269.77	7,202.8	-156.4	-10,574.6	10,575.8	0.00	0.00	0.00	
16,500.0	91.07	269.77	7,200.9	-156.8	-10,674.6	10,675.8	0.00	0.00	0.00	
16,600.0	91.07	269.77	7,199.0	-157.2	-10,774.6	10,775.7	0.00	0.00	0.00	
16,700.0	91.07	269.77	7,197.2	-157.6	-10,874.6	10,875.7	0.00	0.00	0.00	
16,800.0	91.07	269.77	7,195.3	-158.1	-10,974.6	10,975.7	0.00	0.00	0.00	
16,900.0	91.07	269.77	7,193.4	-158.5	-11,074.5	11,075.7	0.00	0.00	0.00	
17,000.0	91.07	269.77	7,191.6	-158.9	-11,174.5	11,175.6	0.00	0.00	0.00	
17,100.0	91.07	269.77	7,189.7	-159.3	-11,274.5	11,275.6	0.00	0.00	0.00	
17,200.0	91.07	269.77	7,187.8	-159.7	-11,374.5	11,375.6	0.00	0.00	0.00	
17,300.0	91.07	269.77	7,185.9	-160.1	-11,474.5	11,475.6	0.00	0.00	0.00	
17,400.0	91.07	269.77	7,184.1	-160.5	-11,574.4	11,575.6	0.00	0.00	0.00	
17,500.0	91.07	269.77	7,182.2	-160.9	-11,674.4	11,675.5	0.00	0.00	0.00	
17,563.9	91.07	269.77	7,181.0	-161.1	-11,738.3	11,739.4	0.00	0.00	0.00	
20" Casing										

Design Targets									
Target Name	Dip Angle (°)	Dip Dir. (°)	TVD (usft)	+N/-S (usft)	+E/-W (usft)	Northing (usft)	Easting (usft)	Latitude	Longitude
- hit/miss target									
- Shape									
BLEHM_07 PBHL	0.00	0.00	7,181.0	-161.1	-11,738.3	1,452,536.12	3,175,528.88	40° 34' 26.018 N	104° 52' 5.275 W
- plan hits target center									
- Point									
BLEHM_07 LP	0.00	0.00	7,361.0	-122.3	-2,125.4	1,452,648.03	3,185,141.17	40° 34' 26.429 N	104° 50' 0.701 W
- plan hits target center									
- Point									

Casing Points					
Measured Depth (usft)	Vertical Depth (usft)	Name	Casing Diameter (")	Hole Diameter (")	
17,563.9	7,181.0	20" Casing	20	24	