



Pad Name: Blehm Pad  
Well Name: BLEHM\_03  
Ground Level: 5076.0  
SHL Latitude: 40° 34' 27.923 N  
SHL Longitude: 104° 49' 33.838 W

## SECTION DETAILS

Sec	MD	Inc	Azi	TVD	+N/-S	+E/-W	Dleg	TFace	VSect	Target
1	0.0	0.00	0.00	0.0	0.0	0.0	0.00	0.00	0.0	
2	1500.0	0.00	0.00	1500.0	0.0	0.0	0.00	0.00	0.0	
3	3126.6	32.53	317.39	3040.6	330.8	-304.3	2.00	317.39	345.7	
4	5524.9	32.53	317.39	5062.6	1280.1	-1177.5	0.00	0.00	1337.4	
5	7151.5	0.00	269.77	6603.2	1610.9	-1481.8	2.00	180.00	1683.1	
6	8063.4	91.19	269.77	7176.0	1608.5	-2066.7	10.00	0.00	2262.4	BLEHM_03 LP
7	17683.6	91.19	269.77	6976.0	1569.7	-11684.7	0.00	0.00	11789.6	BLEHM_03 PBHL

## DESIGN TARGET DETAILS

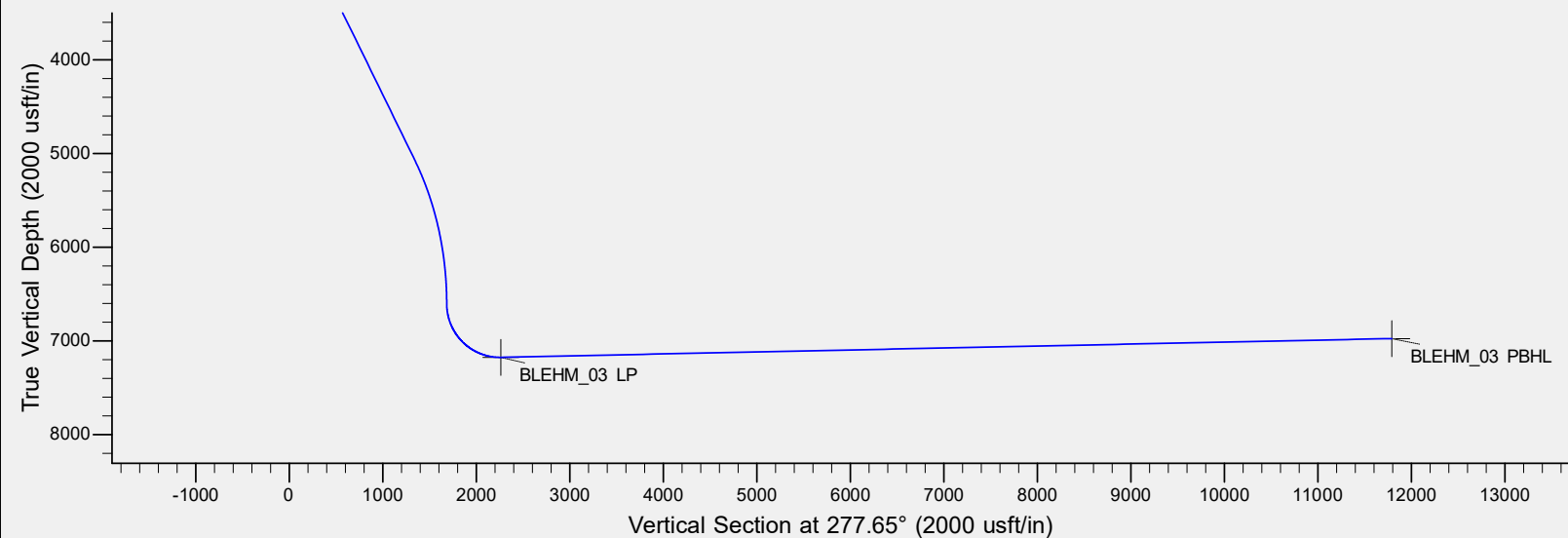
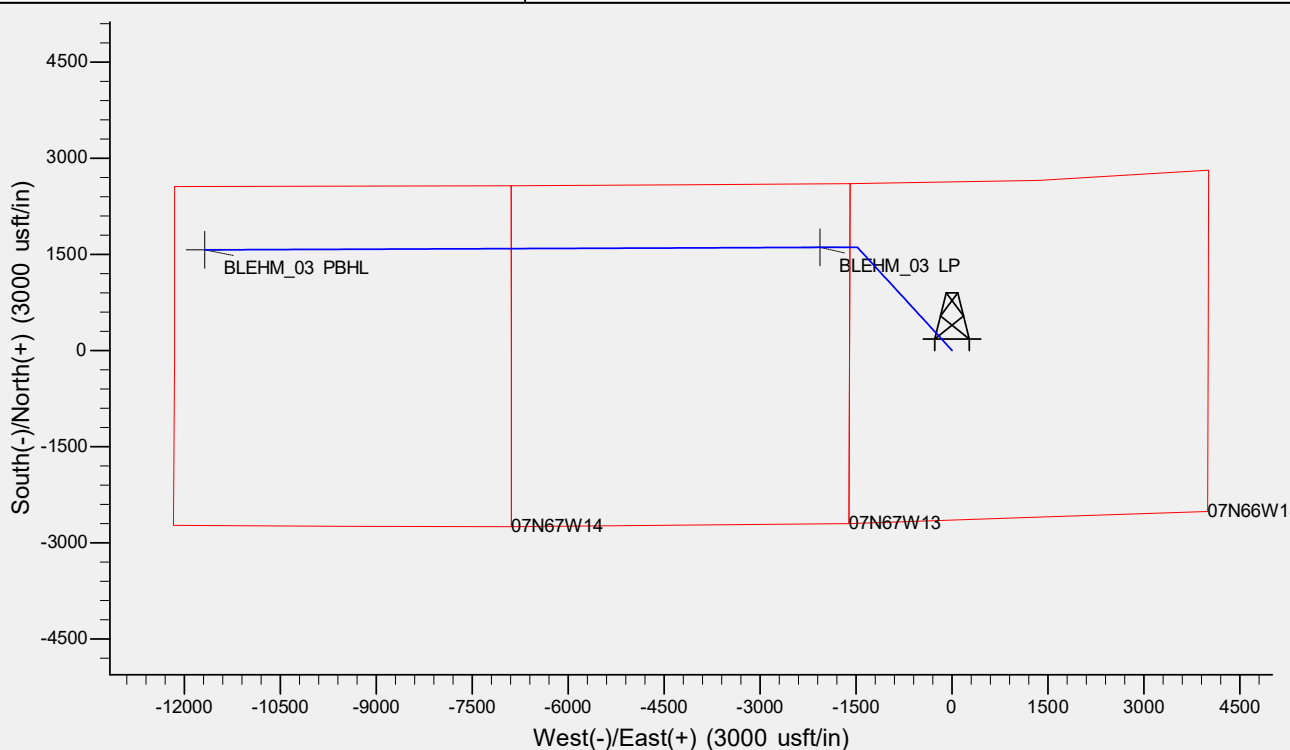
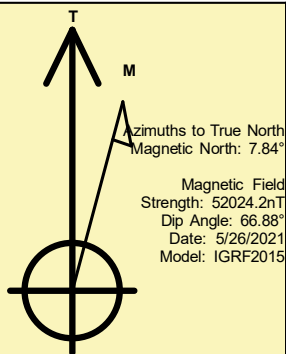
Name	TVD	+N/-S	+E/-W	Northing	Easting	Latitude	Longitude	Shape
BLEHM_03 LP	7176.0	1608.5	-2066.7	1454407.65	3185134.05	40° 34' 43.817 N	104° 50' 0.622 W	Point
BLEHM_03 PBHL	- plan hits target center 6976.0	1569.7	-11684.7	1454295.71	3175516.62	40° 34' 43.406 N	104° 52' 5.272 W	Point
	- plan hits target center							

## REFERENCE INFORMATION

Co-ordinate (N/E) Reference: Well BLEHM\_03, True North  
Vertical (TVD) Reference: KB @ 5096.0usft (Original Well Elev)  
Section (VS) Reference: Slot - (0.0N, 0.0E)  
Measured Depth Reference: KB @ 5096.0usft (Original Well Elev)  
Calculation Method: Minimum Curvature

## CASING DETAILS

No casing data is available



# **Bayswater Exploration & Production, LLC**

**DJ Basin**

**Blehm Pad**

**BLEHM\_03**

**Wellbore #1**

**Plan: Design #1**

## **Standard Planning Report**

**27 May, 2021**

# Bayswater Exploration & Production LLC

## Planning Report

<b>Database:</b>	edm	<b>Local Co-ordinate Reference:</b>	Well BLEHM_03
<b>Company:</b>	Bayswater Exploration & Production, LLC	<b>TVD Reference:</b>	KB @ 5096.0usft (Original Well Elev)
<b>Project:</b>	DJ Basin	<b>MD Reference:</b>	KB @ 5096.0usft (Original Well Elev)
<b>Site:</b>	Blehm Pad	<b>North Reference:</b>	True
<b>Well:</b>	BLEHM_03	<b>Survey Calculation Method:</b>	Minimum Curvature
<b>Wellbore:</b>	Wellbore #1		
<b>Design:</b>	Design #1		

<b>Project</b>	DJ Basin, DJ Basin		
<b>Map System:</b>	US State Plane 1983	<b>System Datum:</b>	Mean Sea Level
<b>Geo Datum:</b>	North American Datum 1983		
<b>Map Zone:</b>	Colorado Northern Zone		

Site		Blehm Pad			
Site Position:		Northing:	1,453,063.27 usft	Latitude:	40° 34' 30.382 N
From:	Lat/Long	Easting:	3,187,154.31 usft	Longitude:	104° 49' 34.572 W
Position Uncertainty:	0.0 usft	Slot Radius:	13-3/16 "	Grid Convergence:	0.44 °

Well	BLEHM_03					
Well Position	+N/-S	-248.8 usft	Northing:	1,452,814.87 usft	Latitude:	40° 34' 27.923 N
	+E/-W	56.7 usft	Easting:	3,187,212.87 usft	Longitude:	104° 49' 33.838 W
Position Uncertainty		0.0 usft	Wellhead Elevation:		Ground Level:	5,076.0 usft

<b>Wellbore</b>	Wellbore #1				
<b>Magnetics</b>	<b>Model Name</b>	<b>Sample Date</b>	<b>Declination (°)</b>	<b>Dip Angle (°)</b>	<b>Field Strength (nT)</b>
	IGRF2015	5/26/2021	7.84	66.88	52,024.21798140

Design	Design #1			
Audit Notes:				
Version:	Phase:	PLAN	Tie On Depth:	0.0
Vertical Section:	Depth From (TVD) (usft)	+N/-S (usft)	+E/-W (usft)	Direction (°)
	0.0	0.0	0.0	277.65

<b>Plan Survey Tool Program</b>	<b>Date</b>	5/27/2021			
<b>Depth From (usft)</b>	<b>Depth To (usft)</b>	<b>Survey (Wellbore)</b>	<b>Tool Name</b>	<b>Remarks</b>	
1	0.0	17,683.6	Design #1 (Wellbore #1)	MWD	
				OWSG MWD - Standard	

<b>Plan Sections</b>										
<b>Measured Depth (usft)</b>	<b>Inclination (°)</b>	<b>Azimuth (°)</b>	<b>Vertical Depth (usft)</b>	<b>+N/-S (usft)</b>	<b>+E/-W (usft)</b>	<b>Dogleg Rate (°/100usft)</b>	<b>Build Rate (°/100usft)</b>	<b>Turn Rate (°/100usft)</b>	<b>TFO (°)</b>	<b>Target</b>
0.0	0.00	0.00	0.0	0.0	0.0	0.00	0.00	0.00	0.00	
1,500.0	0.00	0.00	1,500.0	0.0	0.0	0.00	0.00	0.00	0.00	
3,126.6	32.53	317.39	3,040.6	330.8	-304.3	2.00	2.00	0.00	317.39	
5,524.9	32.53	317.39	5,062.6	1,280.1	-1,177.5	0.00	0.00	0.00	0.00	
7,151.5	0.00	269.77	6,603.2	1,610.9	-1,481.8	2.00	-2.00	0.00	180.00	
8,063.4	91.19	269.77	7,176.0	1,608.5	-2,066.7	10.00	10.00	0.00	0.00	BLEHM_03 LP
17,683.6	91.19	269.77	6,976.0	1,569.7	-11,684.7	0.00	0.00	0.00	0.00	BLEHM_03 PBHL

# Bayswater Exploration & Production LLC

## Planning Report

<b>Database:</b>	edm	<b>Local Co-ordinate Reference:</b>	Well BLEHM_03
<b>Company:</b>	Bayswater Exploration & Production, LLC	<b>TVD Reference:</b>	KB @ 5096.0usft (Original Well Elev)
<b>Project:</b>	DJ Basin	<b>MD Reference:</b>	KB @ 5096.0usft (Original Well Elev)
<b>Site:</b>	Blehm Pad	<b>North Reference:</b>	True
<b>Well:</b>	BLEHM_03	<b>Survey Calculation Method:</b>	Minimum Curvature
<b>Wellbore:</b>	Wellbore #1		
<b>Design:</b>	Design #1		

Planned Survey									
Measured Depth (usft)	Inclination (°)	Azimuth (°)	Vertical Depth (usft)	+N/-S (usft)	+E/-W (usft)	Vertical Section (usft)	Dogleg Rate (°/100usft)	Build Rate (°/100usft)	Turn Rate (°/100usft)
0.0	0.00	0.00	0.0	0.0	0.0	0.0	0.00	0.00	0.00
100.0	0.00	0.00	100.0	0.0	0.0	0.0	0.00	0.00	0.00
200.0	0.00	0.00	200.0	0.0	0.0	0.0	0.00	0.00	0.00
300.0	0.00	0.00	300.0	0.0	0.0	0.0	0.00	0.00	0.00
400.0	0.00	0.00	400.0	0.0	0.0	0.0	0.00	0.00	0.00
500.0	0.00	0.00	500.0	0.0	0.0	0.0	0.00	0.00	0.00
600.0	0.00	0.00	600.0	0.0	0.0	0.0	0.00	0.00	0.00
700.0	0.00	0.00	700.0	0.0	0.0	0.0	0.00	0.00	0.00
800.0	0.00	0.00	800.0	0.0	0.0	0.0	0.00	0.00	0.00
900.0	0.00	0.00	900.0	0.0	0.0	0.0	0.00	0.00	0.00
1,000.0	0.00	0.00	1,000.0	0.0	0.0	0.0	0.00	0.00	0.00
1,100.0	0.00	0.00	1,100.0	0.0	0.0	0.0	0.00	0.00	0.00
1,200.0	0.00	0.00	1,200.0	0.0	0.0	0.0	0.00	0.00	0.00
1,300.0	0.00	0.00	1,300.0	0.0	0.0	0.0	0.00	0.00	0.00
1,400.0	0.00	0.00	1,400.0	0.0	0.0	0.0	0.00	0.00	0.00
1,500.0	0.00	0.00	1,500.0	0.0	0.0	0.0	0.00	0.00	0.00
1,600.0	2.00	317.39	1,600.0	1.3	-1.2	1.3	2.00	2.00	0.00
1,700.0	4.00	317.39	1,699.8	5.1	-4.7	5.4	2.00	2.00	0.00
1,800.0	6.00	317.39	1,799.5	11.6	-10.6	12.1	2.00	2.00	0.00
1,900.0	8.00	317.39	1,898.7	20.5	-18.9	21.4	2.00	2.00	0.00
2,000.0	10.00	317.39	1,997.5	32.0	-29.5	33.5	2.00	2.00	0.00
2,100.0	12.00	317.39	2,095.6	46.1	-42.4	48.1	2.00	2.00	0.00
2,200.0	14.00	317.39	2,193.1	62.6	-57.6	65.4	2.00	2.00	0.00
2,300.0	16.00	317.39	2,289.6	81.7	-75.1	85.3	2.00	2.00	0.00
2,400.0	18.00	317.39	2,385.3	103.2	-94.9	107.8	2.00	2.00	0.00
2,500.0	20.00	317.39	2,479.8	127.2	-117.0	132.9	2.00	2.00	0.00
2,600.0	22.00	317.39	2,573.2	153.5	-141.2	160.4	2.00	2.00	0.00
2,700.0	24.00	317.39	2,665.2	182.3	-167.7	190.5	2.00	2.00	0.00
2,800.0	26.00	317.39	2,755.8	213.4	-196.3	222.9	2.00	2.00	0.00
2,900.0	28.00	317.39	2,844.9	246.8	-227.0	257.9	2.00	2.00	0.00
3,000.0	30.00	317.39	2,932.4	282.5	-259.8	295.1	2.00	2.00	0.00
3,100.0	32.00	317.39	3,018.1	320.4	-294.7	334.7	2.00	2.00	0.00
3,126.6	32.53	317.39	3,040.6	330.8	-304.3	345.7	2.00	2.00	0.00
3,200.0	32.53	317.39	3,102.5	359.9	-331.0	376.0	0.00	0.00	0.00
3,300.0	32.53	317.39	3,186.8	399.5	-367.4	417.4	0.00	0.00	0.00
3,400.0	32.53	317.39	3,271.1	439.0	-403.9	458.7	0.00	0.00	0.00
3,500.0	32.53	317.39	3,355.4	478.6	-440.3	500.1	0.00	0.00	0.00
3,600.0	32.53	317.39	3,439.7	518.2	-476.7	541.4	0.00	0.00	0.00
3,700.0	32.53	317.39	3,524.0	557.8	-513.1	582.8	0.00	0.00	0.00
3,800.0	32.53	317.39	3,608.3	597.4	-549.5	624.1	0.00	0.00	0.00
3,900.0	32.53	317.39	3,692.6	636.9	-585.9	665.5	0.00	0.00	0.00
4,000.0	32.53	317.39	3,777.0	676.5	-622.3	706.8	0.00	0.00	0.00
4,100.0	32.53	317.39	3,861.3	716.1	-658.7	748.2	0.00	0.00	0.00
4,200.0	32.53	317.39	3,945.6	755.7	-695.1	789.5	0.00	0.00	0.00
4,300.0	32.53	317.39	4,029.9	795.3	-731.5	830.9	0.00	0.00	0.00
4,400.0	32.53	317.39	4,114.2	834.8	-767.9	872.2	0.00	0.00	0.00
4,500.0	32.53	317.39	4,198.5	874.4	-804.3	913.6	0.00	0.00	0.00
4,600.0	32.53	317.39	4,282.8	914.0	-840.7	954.9	0.00	0.00	0.00
4,700.0	32.53	317.39	4,367.1	953.6	-877.1	996.3	0.00	0.00	0.00
4,800.0	32.53	317.39	4,451.4	993.2	-913.6	1,037.7	0.00	0.00	0.00
4,900.0	32.53	317.39	4,535.7	1,032.7	-950.0	1,079.0	0.00	0.00	0.00
5,000.0	32.53	317.39	4,620.0	1,072.3	-986.4	1,120.4	0.00	0.00	0.00
5,100.0	32.53	317.39	4,704.3	1,111.9	-1,022.8	1,161.7	0.00	0.00	0.00
5,200.0	32.53	317.39	4,788.7	1,151.5	-1,059.2	1,203.1	0.00	0.00	0.00

# Bayswater Exploration & Production LLC

## Planning Report

<b>Database:</b>	edm	<b>Local Co-ordinate Reference:</b>	Well BLEHM_03
<b>Company:</b>	Bayswater Exploration & Production, LLC	<b>TVD Reference:</b>	KB @ 5096.0usft (Original Well Elev)
<b>Project:</b>	DJ Basin	<b>MD Reference:</b>	KB @ 5096.0usft (Original Well Elev)
<b>Site:</b>	Blehm Pad	<b>North Reference:</b>	True
<b>Well:</b>	BLEHM_03	<b>Survey Calculation Method:</b>	Minimum Curvature
<b>Wellbore:</b>	Wellbore #1		
<b>Design:</b>	Design #1		

Planned Survey										
Measured Depth (usft)	Inclination (°)	Azimuth (°)	Vertical Depth (usft)	+N/-S (usft)	+E/-W (usft)	Vertical Section (usft)	Dogleg Rate (°/100usft)	Build Rate (°/100usft)	Turn Rate (°/100usft)	
5,300.0	32.53	317.39	4,873.0	1,191.1	-1,095.6	1,244.4	0.00	0.00	0.00	
5,400.0	32.53	317.39	4,957.3	1,230.6	-1,132.0	1,285.8	0.00	0.00	0.00	
5,500.0	32.53	317.39	5,041.6	1,270.2	-1,168.4	1,327.1	0.00	0.00	0.00	
5,524.9	32.53	317.39	5,062.6	1,280.1	-1,177.5	1,337.4	0.00	0.00	0.00	
5,600.0	31.03	317.39	5,126.4	1,309.2	-1,204.2	1,367.8	2.00	-2.00	0.00	
5,700.0	29.03	317.39	5,213.0	1,346.0	-1,238.1	1,406.3	2.00	-2.00	0.00	
5,800.0	27.03	317.39	5,301.3	1,380.6	-1,269.9	1,442.4	2.00	-2.00	0.00	
5,900.0	25.03	317.39	5,391.1	1,412.9	-1,299.6	1,476.2	2.00	-2.00	0.00	
6,000.0	23.03	317.39	5,482.4	1,442.9	-1,327.2	1,507.5	2.00	-2.00	0.00	
6,100.0	21.03	317.39	5,575.1	1,470.5	-1,352.6	1,536.3	2.00	-2.00	0.00	
6,200.0	19.03	317.39	5,669.1	1,495.7	-1,375.8	1,562.7	2.00	-2.00	0.00	
6,300.0	17.03	317.39	5,764.2	1,518.4	-1,396.7	1,586.5	2.00	-2.00	0.00	
6,400.0	15.03	317.39	5,860.3	1,538.8	-1,415.4	1,607.7	2.00	-2.00	0.00	
6,500.0	13.03	317.39	5,957.3	1,556.6	-1,431.9	1,626.4	2.00	-2.00	0.00	
6,600.0	11.03	317.39	6,055.1	1,572.0	-1,446.0	1,642.4	2.00	-2.00	0.00	
6,700.0	9.03	317.39	6,153.5	1,584.8	-1,457.8	1,655.8	2.00	-2.00	0.00	
6,800.0	7.03	317.39	6,252.6	1,595.0	-1,467.2	1,666.5	2.00	-2.00	0.00	
6,900.0	5.03	317.39	6,352.0	1,602.8	-1,474.3	1,674.6	2.00	-2.00	0.00	
7,000.0	3.03	317.39	6,451.7	1,608.0	-1,479.1	1,680.0	2.00	-2.00	0.00	
7,100.0	1.03	317.39	6,551.7	1,610.6	-1,481.5	1,682.7	2.00	-2.00	0.00	
7,151.5	0.00	269.77	6,603.2	1,610.9	-1,481.8	1,683.1	2.00	-2.00	0.00	
7,200.0	4.85	269.77	6,651.6	1,610.9	-1,483.8	1,685.1	10.00	10.00	0.00	
7,300.0	14.85	269.77	6,750.0	1,610.8	-1,500.9	1,702.0	10.00	10.00	0.00	
7,400.0	24.85	269.77	6,844.0	1,610.7	-1,534.8	1,735.6	10.00	10.00	0.00	
7,500.0	34.85	269.77	6,930.6	1,610.5	-1,584.6	1,784.9	10.00	10.00	0.00	
7,600.0	44.85	269.77	7,007.3	1,610.2	-1,648.5	1,848.3	10.00	10.00	0.00	
7,700.0	54.85	269.77	7,071.7	1,609.9	-1,724.9	1,923.9	10.00	10.00	0.00	
7,800.0	64.85	269.77	7,121.8	1,609.6	-1,811.3	2,009.4	10.00	10.00	0.00	
7,900.0	74.85	269.77	7,156.2	1,609.2	-1,905.0	2,102.3	10.00	10.00	0.00	
8,000.0	84.85	269.77	7,173.8	1,608.8	-2,003.3	2,199.7	10.00	10.00	0.00	
8,063.4	91.19	269.77	7,176.0	1,608.5	-2,066.7	2,262.4	10.00	10.00	0.00	
8,100.0	91.19	269.77	7,175.2	1,608.4	-2,103.2	2,298.7	0.00	0.00	0.00	
8,200.0	91.19	269.77	7,173.2	1,608.0	-2,203.2	2,397.7	0.00	0.00	0.00	
8,300.0	91.19	269.77	7,171.1	1,607.6	-2,303.2	2,496.7	0.00	0.00	0.00	
8,400.0	91.19	269.77	7,169.0	1,607.2	-2,403.2	2,595.8	0.00	0.00	0.00	
8,500.0	91.19	269.77	7,166.9	1,606.8	-2,503.2	2,694.8	0.00	0.00	0.00	
8,600.0	91.19	269.77	7,164.8	1,606.4	-2,603.1	2,793.8	0.00	0.00	0.00	
8,700.0	91.19	269.77	7,162.8	1,606.0	-2,703.1	2,892.9	0.00	0.00	0.00	
8,800.0	91.19	269.77	7,160.7	1,605.6	-2,803.1	2,991.9	0.00	0.00	0.00	
8,900.0	91.19	269.77	7,158.6	1,605.2	-2,903.1	3,090.9	0.00	0.00	0.00	
9,000.0	91.19	269.77	7,156.5	1,604.8	-3,003.0	3,190.0	0.00	0.00	0.00	
9,100.0	91.19	269.77	7,154.4	1,604.3	-3,103.0	3,289.0	0.00	0.00	0.00	
9,200.0	91.19	269.77	7,152.4	1,603.9	-3,203.0	3,388.0	0.00	0.00	0.00	
9,300.0	91.19	269.77	7,150.3	1,603.5	-3,303.0	3,487.1	0.00	0.00	0.00	
9,400.0	91.19	269.77	7,148.2	1,603.1	-3,403.0	3,586.1	0.00	0.00	0.00	
9,500.0	91.19	269.77	7,146.1	1,602.7	-3,502.9	3,685.1	0.00	0.00	0.00	
9,600.0	91.19	269.77	7,144.1	1,602.3	-3,602.9	3,784.2	0.00	0.00	0.00	
9,700.0	91.19	269.77	7,142.0	1,601.9	-3,702.9	3,883.2	0.00	0.00	0.00	
9,800.0	91.19	269.77	7,139.9	1,601.5	-3,802.9	3,982.2	0.00	0.00	0.00	
9,900.0	91.19	269.77	7,137.8	1,601.1	-3,902.8	4,081.3	0.00	0.00	0.00	
10,000.0	91.19	269.77	7,135.7	1,600.7	-4,002.8	4,180.3	0.00	0.00	0.00	
10,100.0	91.19	269.77	7,133.7	1,600.3	-4,102.8	4,279.3	0.00	0.00	0.00	
10,200.0	91.19	269.77	7,131.6	1,599.9	-4,202.8	4,378.4	0.00	0.00	0.00	
10,300.0	91.19	269.77	7,129.5	1,599.5	-4,302.7	4,477.4	0.00	0.00	0.00	

# Bayswater Exploration & Production LLC

## Planning Report

<b>Database:</b>	edm	<b>Local Co-ordinate Reference:</b>	Well BLEHM_03
<b>Company:</b>	Bayswater Exploration & Production, LLC	<b>TVD Reference:</b>	KB @ 5096.0usft (Original Well Elev)
<b>Project:</b>	DJ Basin	<b>MD Reference:</b>	KB @ 5096.0usft (Original Well Elev)
<b>Site:</b>	Blehm Pad	<b>North Reference:</b>	True
<b>Well:</b>	BLEHM_03	<b>Survey Calculation Method:</b>	Minimum Curvature
<b>Wellbore:</b>	Wellbore #1		
<b>Design:</b>	Design #1		

Planned Survey										
Measured Depth (usft)	Inclination (°)	Azimuth (°)	Vertical Depth (usft)	+N/-S (usft)	+E/-W (usft)	Vertical Section (usft)	Dogleg Rate (°/100usft)	Build Rate (°/100usft)	Turn Rate (°/100usft)	
10,400.0	91.19	269.77	7,127.4	1,599.1	-4,402.7	4,576.4	0.00	0.00	0.00	
10,500.0	91.19	269.77	7,125.3	1,598.7	-4,502.7	4,675.5	0.00	0.00	0.00	
10,600.0	91.19	269.77	7,123.3	1,598.3	-4,602.7	4,774.5	0.00	0.00	0.00	
10,700.0	91.19	269.77	7,121.2	1,597.9	-4,702.7	4,873.5	0.00	0.00	0.00	
10,800.0	91.19	269.77	7,119.1	1,597.5	-4,802.6	4,972.6	0.00	0.00	0.00	
10,900.0	91.19	269.77	7,117.0	1,597.1	-4,902.6	5,071.6	0.00	0.00	0.00	
11,000.0	91.19	269.77	7,114.9	1,596.7	-5,002.6	5,170.6	0.00	0.00	0.00	
11,100.0	91.19	269.77	7,112.9	1,596.3	-5,102.6	5,269.7	0.00	0.00	0.00	
11,200.0	91.19	269.77	7,110.8	1,595.9	-5,202.5	5,368.7	0.00	0.00	0.00	
11,300.0	91.19	269.77	7,108.7	1,595.5	-5,302.5	5,467.7	0.00	0.00	0.00	
11,400.0	91.19	269.77	7,106.6	1,595.1	-5,402.5	5,566.8	0.00	0.00	0.00	
11,500.0	91.19	269.77	7,104.6	1,594.7	-5,502.5	5,665.8	0.00	0.00	0.00	
11,600.0	91.19	269.77	7,102.5	1,594.3	-5,602.5	5,764.8	0.00	0.00	0.00	
11,700.0	91.19	269.77	7,100.4	1,593.9	-5,702.4	5,863.9	0.00	0.00	0.00	
11,800.0	91.19	269.77	7,098.3	1,593.4	-5,802.4	5,962.9	0.00	0.00	0.00	
11,900.0	91.19	269.77	7,096.2	1,593.0	-5,902.4	6,061.9	0.00	0.00	0.00	
12,000.0	91.19	269.77	7,094.2	1,592.6	-6,002.4	6,161.0	0.00	0.00	0.00	
12,100.0	91.19	269.77	7,092.1	1,592.2	-6,102.3	6,260.0	0.00	0.00	0.00	
12,200.0	91.19	269.77	7,090.0	1,591.8	-6,202.3	6,359.0	0.00	0.00	0.00	
12,300.0	91.19	269.77	7,087.9	1,591.4	-6,302.3	6,458.1	0.00	0.00	0.00	
12,400.0	91.19	269.77	7,085.8	1,591.0	-6,402.3	6,557.1	0.00	0.00	0.00	
12,500.0	91.19	269.77	7,083.8	1,590.6	-6,502.3	6,656.1	0.00	0.00	0.00	
12,600.0	91.19	269.77	7,081.7	1,590.2	-6,602.2	6,755.2	0.00	0.00	0.00	
12,700.0	91.19	269.77	7,079.6	1,589.8	-6,702.2	6,854.2	0.00	0.00	0.00	
12,800.0	91.19	269.77	7,077.5	1,589.4	-6,802.2	6,953.2	0.00	0.00	0.00	
12,900.0	91.19	269.77	7,075.4	1,589.0	-6,902.2	7,052.3	0.00	0.00	0.00	
13,000.0	91.19	269.77	7,073.4	1,588.6	-7,002.1	7,151.3	0.00	0.00	0.00	
13,100.0	91.19	269.77	7,071.3	1,588.2	-7,102.1	7,250.3	0.00	0.00	0.00	
13,200.0	91.19	269.77	7,069.2	1,587.8	-7,202.1	7,349.4	0.00	0.00	0.00	
13,300.0	91.19	269.77	7,067.1	1,587.4	-7,302.1	7,448.4	0.00	0.00	0.00	
13,400.0	91.19	269.77	7,065.1	1,587.0	-7,402.1	7,547.4	0.00	0.00	0.00	
13,500.0	91.19	269.77	7,063.0	1,586.6	-7,502.0	7,646.5	0.00	0.00	0.00	
13,600.0	91.19	269.77	7,060.9	1,586.2	-7,602.0	7,745.5	0.00	0.00	0.00	
13,700.0	91.19	269.77	7,058.8	1,585.8	-7,702.0	7,844.5	0.00	0.00	0.00	
13,800.0	91.19	269.77	7,056.7	1,585.4	-7,802.0	7,943.6	0.00	0.00	0.00	
13,900.0	91.19	269.77	7,054.7	1,585.0	-7,901.9	8,042.6	0.00	0.00	0.00	
14,000.0	91.19	269.77	7,052.6	1,584.6	-8,001.9	8,141.6	0.00	0.00	0.00	
14,100.0	91.19	269.77	7,050.5	1,584.2	-8,101.9	8,240.7	0.00	0.00	0.00	
14,200.0	91.19	269.77	7,048.4	1,583.8	-8,201.9	8,339.7	0.00	0.00	0.00	
14,300.0	91.19	269.77	7,046.3	1,583.4	-8,301.9	8,438.7	0.00	0.00	0.00	
14,400.0	91.19	269.77	7,044.3	1,582.9	-8,401.8	8,537.8	0.00	0.00	0.00	
14,500.0	91.19	269.77	7,042.2	1,582.5	-8,501.8	8,636.8	0.00	0.00	0.00	
14,600.0	91.19	269.77	7,040.1	1,582.1	-8,601.8	8,735.9	0.00	0.00	0.00	
14,700.0	91.19	269.77	7,038.0	1,581.7	-8,701.8	8,834.9	0.00	0.00	0.00	
14,800.0	91.19	269.77	7,035.9	1,581.3	-8,801.7	8,933.9	0.00	0.00	0.00	
14,900.0	91.19	269.77	7,033.9	1,580.9	-8,901.7	9,033.0	0.00	0.00	0.00	
15,000.0	91.19	269.77	7,031.8	1,580.5	-9,001.7	9,132.0	0.00	0.00	0.00	
15,100.0	91.19	269.77	7,029.7	1,580.1	-9,101.7	9,231.0	0.00	0.00	0.00	
15,200.0	91.19	269.77	7,027.6	1,579.7	-9,201.6	9,330.1	0.00	0.00	0.00	
15,300.0	91.19	269.77	7,025.6	1,579.3	-9,301.6	9,429.1	0.00	0.00	0.00	
15,400.0	91.19	269.77	7,023.5	1,578.9	-9,401.6	9,528.1	0.00	0.00	0.00	
15,500.0	91.19	269.77	7,021.4	1,578.5	-9,501.6	9,627.2	0.00	0.00	0.00	
15,600.0	91.19	269.77	7,019.3	1,578.1	-9,601.6	9,726.2	0.00	0.00	0.00	
15,700.0	91.19	269.77	7,017.2	1,577.7	-9,701.5	9,825.2	0.00	0.00	0.00	

# Bayswater Exploration & Production LLC

## Planning Report

<b>Database:</b>	edm	<b>Local Co-ordinate Reference:</b>	Well BLEHM_03
<b>Company:</b>	Bayswater Exploration & Production, LLC	<b>TVD Reference:</b>	KB @ 5096.0usft (Original Well Elev)
<b>Project:</b>	DJ Basin	<b>MD Reference:</b>	KB @ 5096.0usft (Original Well Elev)
<b>Site:</b>	Blehm Pad	<b>North Reference:</b>	True
<b>Well:</b>	BLEHM_03	<b>Survey Calculation Method:</b>	Minimum Curvature
<b>Wellbore:</b>	Wellbore #1		
<b>Design:</b>	Design #1		

Planned Survey										
Measured Depth (usft)	Inclination (°)	Azimuth (°)	Vertical Depth (usft)	+N/-S (usft)	+E/-W (usft)	Vertical Section (usft)	Dogleg Rate (°/100usft)	Build Rate (°/100usft)	Turn Rate (°/100usft)	
15,800.0	91.19	269.77	7,015.2	1,577.3	-9,801.5	9,924.3	0.00	0.00	0.00	
15,900.0	91.19	269.77	7,013.1	1,576.9	-9,901.5	10,023.3	0.00	0.00	0.00	
16,000.0	91.19	269.77	7,011.0	1,576.5	-10,001.5	10,122.3	0.00	0.00	0.00	
16,100.0	91.19	269.77	7,008.9	1,576.1	-10,101.4	10,221.4	0.00	0.00	0.00	
16,200.0	91.19	269.77	7,006.8	1,575.7	-10,201.4	10,320.4	0.00	0.00	0.00	
16,300.0	91.19	269.77	7,004.8	1,575.3	-10,301.4	10,419.4	0.00	0.00	0.00	
16,400.0	91.19	269.77	7,002.7	1,574.9	-10,401.4	10,518.5	0.00	0.00	0.00	
16,500.0	91.19	269.77	7,000.6	1,574.5	-10,501.4	10,617.5	0.00	0.00	0.00	
16,600.0	91.19	269.77	6,998.5	1,574.1	-10,601.3	10,716.5	0.00	0.00	0.00	
16,700.0	91.19	269.77	6,996.4	1,573.7	-10,701.3	10,815.6	0.00	0.00	0.00	
16,800.0	91.19	269.77	6,994.4	1,573.3	-10,801.3	10,914.6	0.00	0.00	0.00	
16,900.0	91.19	269.77	6,992.3	1,572.9	-10,901.3	11,013.6	0.00	0.00	0.00	
17,000.0	91.19	269.77	6,990.2	1,572.4	-11,001.2	11,112.7	0.00	0.00	0.00	
17,100.0	91.19	269.77	6,988.1	1,572.0	-11,101.2	11,211.7	0.00	0.00	0.00	
17,200.0	91.19	269.77	6,986.1	1,571.6	-11,201.2	11,310.7	0.00	0.00	0.00	
17,300.0	91.19	269.77	6,984.0	1,571.2	-11,301.2	11,409.8	0.00	0.00	0.00	
17,400.0	91.19	269.77	6,981.9	1,570.8	-11,401.2	11,508.8	0.00	0.00	0.00	
17,500.0	91.19	269.77	6,979.8	1,570.4	-11,501.1	11,607.8	0.00	0.00	0.00	
17,600.0	91.19	269.77	6,977.7	1,570.0	-11,601.1	11,706.9	0.00	0.00	0.00	
17,683.6	91.19	269.77	6,976.0	1,569.7	-11,684.7	11,789.6	0.00	0.00	0.00	
20" Casing										

Design Targets										
Target Name	Dip Angle (°)	Dip Dir. (°)	TVD (usft)	+N/-S (usft)	+E/-W (usft)	Northing (usft)	Easting (usft)	Latitude	Longitude	
BLEHM_03 PBHL - hit/miss target - Shape - Point	0.00	0.00	6,976.0	1,569.7	-11,684.7	1,454,295.71	3,175,516.62	40° 34' 43.406 N	104° 52' 5.272 W	
BLEHM_03 LP - plan hits target center - Point	0.00	0.00	7,176.0	1,608.5	-2,066.7	1,454,407.65	3,185,134.05	40° 34' 43.817 N	104° 50' 0.622 W	

Casing Points										
Measured Depth (usft)	Vertical Depth (usft)	Name	Casing Diameter (")	Hole Diameter (")						
17,683.6	6,976.0	20" Casing	20	24						