



Pad Name: Blehm Pad  
Well Name: BLEHM\_04  
Ground Level: 5076.0  
SHL Latitude: 40° 34' 27.851 N  
SHL Longitude: 104° 49' 33.668 W

## SECTION DETAILS

Sec	MD	Inc	Azi	TVD	+N/-S	+E/-W	Dleg	TFace	Vsect	Target
1	0.0	0.00	0.00	0.0	0.0	0.0	0.00	0.00	0.0	
2	1500.0	0.00	0.00	1500.0	0.0	0.0	0.00	0.00	0.0	
3	2771.3	25.43	308.24	2729.9	171.7	-217.9	2.00	308.24	233.5	
4	5913.9	25.43	308.24	5568.2	1006.8	-1277.7	0.00	0.00	1369.1	
5	7185.2	0.00	269.77	6798.2	1178.5	-1495.7	2.00	180.00	1602.7	
6	8097.7	91.25	269.77	7371.0	1176.1	-2081.1	10.00	0.00	2185.1	BLEHM_04 LP
7	17716.8	91.25	269.77	7161.0	1136.9	-11697.9	0.00	0.00	11753.0	BLEHM_04 PBHL

## DESIGN TARGET DETAILS

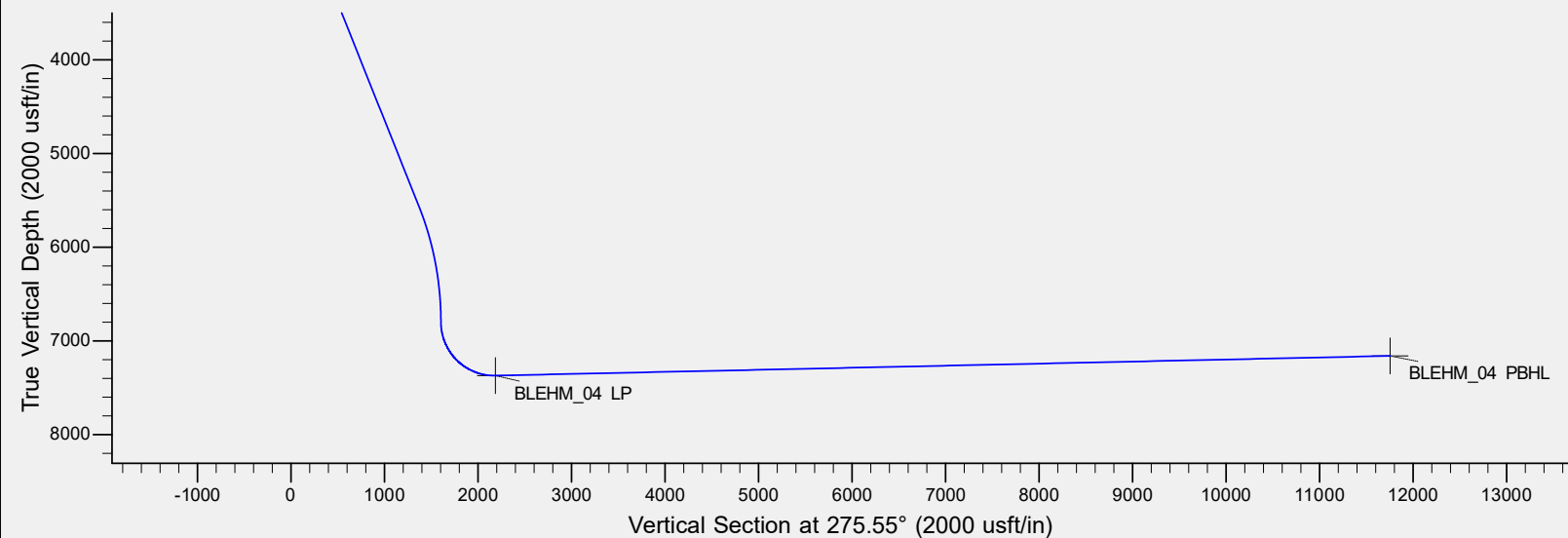
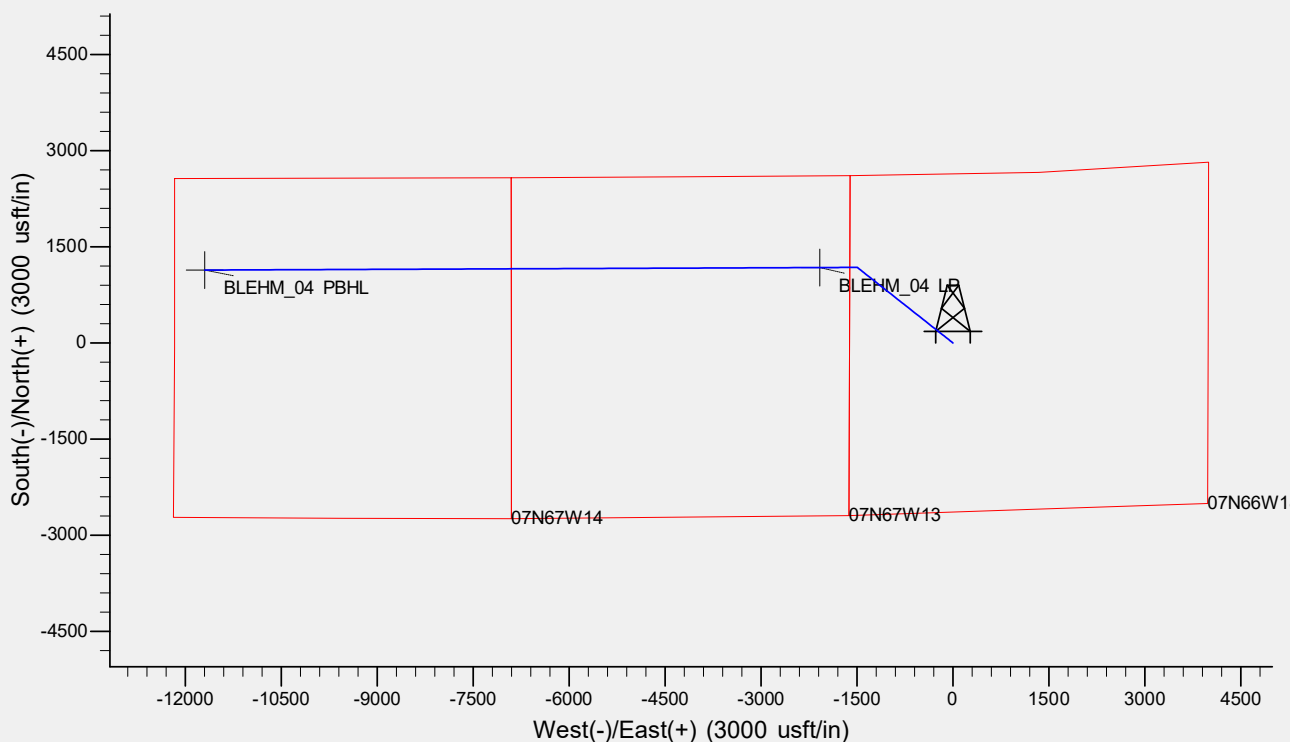
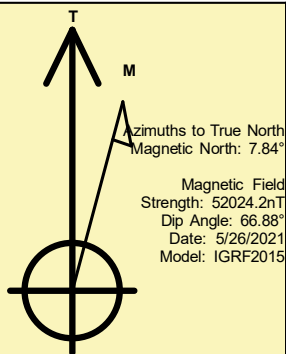
Name	TVD	+N/-S	+E/-W	Northing	Easting	Latitude	Longitude	Shape
BLEHM_04 LP	7371.0	1176.1	-2081.1	1453967.93	3185135.97	40° 34' 39.472 N	104° 50' 0.640 W	Point
BLEHM_04 PBHL	- plan hits target center 7161.0	1136.9	-11697.9	1453855.63	3175519.76	40° 34' 39.058 N	104° 52' 5.272 W	Point
	- plan hits target center							

## REFERENCE INFORMATION

Co-ordinate (N/E) Reference: Well BLEHM\_04, True North  
Vertical (TVD) Reference: KB @ 5096.0usft (Original Well Elev)  
Section (VS) Reference: Slot - (0.0N, 0.0E)  
Measured Depth Reference: KB @ 5096.0usft (Original Well Elev)  
Calculation Method: Minimum Curvature

## CASING DETAILS

No casing data is available



# **Bayswater Exploration & Production, LLC**

**DJ Basin**

**Blehm Pad**

**BLEHM\_04**

**Wellbore #1**

**Plan: Design #1**

## **Standard Planning Report**

**27 May, 2021**

# Bayswater Exploration & Production LLC

## Planning Report

<b>Database:</b>	edm	<b>Local Co-ordinate Reference:</b>	Well BLEHM_04
<b>Company:</b>	Bayswater Exploration & Production, LLC	<b>TVD Reference:</b>	KB @ 5096.0usft (Original Well Elev)
<b>Project:</b>	DJ Basin	<b>MD Reference:</b>	KB @ 5096.0usft (Original Well Elev)
<b>Site:</b>	Blehm Pad	<b>North Reference:</b>	True
<b>Well:</b>	BLEHM_04	<b>Survey Calculation Method:</b>	Minimum Curvature
<b>Wellbore:</b>	Wellbore #1		
<b>Design:</b>	Design #1		

<b>Project</b>	DJ Basin, DJ Basin		
<b>Map System:</b>	US State Plane 1983	<b>System Datum:</b>	Mean Sea Level
<b>Geo Datum:</b>	North American Datum 1983		
<b>Map Zone:</b>	Colorado Northern Zone		

Site		Blehm Pad			
Site Position:		Northing:	1,453,063.27 usft	Latitude:	40° 34' 30.382 N
From:	Lat/Long	Easting:	3,187,154.31 usft	Longitude:	104° 49' 34.572 W
Position Uncertainty:	0.0 usft	Slot Radius:	13-3/16 "	Grid Convergence:	0.44 °

Well	BLEHM_04					
Well Position	+N/-S	-256.1 usft	Northing:	1,452,807.68 usft	Latitude:	40° 34' 27.851 N
	+E/-W	69.7 usft	Easting:	3,187,225.98 usft	Longitude:	104° 49' 33.668 W
Position Uncertainty		0.0 usft	Wellhead Elevation:		Ground Level:	5,076.0 usft

<b>Wellbore</b>	Wellbore #1				
<b>Magnetics</b>	<b>Model Name</b>	<b>Sample Date</b>	<b>Declination (°)</b>	<b>Dip Angle (°)</b>	<b>Field Strength (nT)</b>
	IGRF2015	5/26/2021	7.84	66.88	52,024.21258609

Design	Design #1			
Audit Notes:				
Version:	Phase:	PLAN	Tie On Depth:	0.0
Vertical Section:	Depth From (TVD) (usft)	+N/-S (usft)	+E/-W (usft)	Direction (°)
	0.0	0.0	0.0	275.55

<b>Plan Survey Tool Program</b>	<b>Date</b>	5/26/2021			
<b>Depth From (usft)</b>	<b>Depth To (usft)</b>	<b>Survey (Wellbore)</b>	<b>Tool Name</b>	<b>Remarks</b>	
1	0.0	17,716.8	Design #1 (Wellbore #1)	MWD	
				OWSG MWD - Standard	

<b>Plan Sections</b>										
<b>Measured Depth (usft)</b>	<b>Inclination (°)</b>	<b>Azimuth (°)</b>	<b>Vertical Depth (usft)</b>	<b>+N/-S (usft)</b>	<b>+E/-W (usft)</b>	<b>Dogleg Rate (°/100usft)</b>	<b>Build Rate (°/100usft)</b>	<b>Turn Rate (°/100usft)</b>	<b>TFO (°)</b>	<b>Target</b>
0.0	0.00	0.00	0.0	0.0	0.0	0.00	0.00	0.00	0.00	
1,500.0	0.00	0.00	1,500.0	0.0	0.0	0.00	0.00	0.00	0.00	
2,771.3	25.43	308.24	2,729.9	171.7	-217.9	2.00	2.00	0.00	308.24	
5,913.9	25.43	308.24	5,568.2	1,006.8	-1,277.7	0.00	0.00	0.00	0.00	
7,185.2	0.00	269.77	6,798.2	1,178.5	-1,495.7	2.00	-2.00	0.00	180.00	
8,097.7	91.25	269.77	7,371.0	1,176.1	-2,081.1	10.00	10.00	0.00	0.00	BLEHM_04 LP
17,716.8	91.25	269.77	7,161.0	1,136.9	-11,697.9	0.00	0.00	0.00	0.00	BLEHM_04 PBHL

# Bayswater Exploration & Production LLC

## Planning Report

<b>Database:</b>	edm	<b>Local Co-ordinate Reference:</b>	Well BLEHM_04
<b>Company:</b>	Bayswater Exploration & Production, LLC	<b>TVD Reference:</b>	KB @ 5096.0usft (Original Well Elev)
<b>Project:</b>	DJ Basin	<b>MD Reference:</b>	KB @ 5096.0usft (Original Well Elev)
<b>Site:</b>	Blehm Pad	<b>North Reference:</b>	True
<b>Well:</b>	BLEHM_04	<b>Survey Calculation Method:</b>	Minimum Curvature
<b>Wellbore:</b>	Wellbore #1		
<b>Design:</b>	Design #1		

Planned Survey									
Measured Depth (usft)	Inclination (°)	Azimuth (°)	Vertical Depth (usft)	+N/-S (usft)	+E/-W (usft)	Vertical Section (usft)	Dogleg Rate (°/100usft)	Build Rate (°/100usft)	Turn Rate (°/100usft)
0.0	0.00	0.00	0.0	0.0	0.0	0.0	0.00	0.00	0.00
100.0	0.00	0.00	100.0	0.0	0.0	0.0	0.00	0.00	0.00
200.0	0.00	0.00	200.0	0.0	0.0	0.0	0.00	0.00	0.00
300.0	0.00	0.00	300.0	0.0	0.0	0.0	0.00	0.00	0.00
400.0	0.00	0.00	400.0	0.0	0.0	0.0	0.00	0.00	0.00
500.0	0.00	0.00	500.0	0.0	0.0	0.0	0.00	0.00	0.00
600.0	0.00	0.00	600.0	0.0	0.0	0.0	0.00	0.00	0.00
700.0	0.00	0.00	700.0	0.0	0.0	0.0	0.00	0.00	0.00
800.0	0.00	0.00	800.0	0.0	0.0	0.0	0.00	0.00	0.00
900.0	0.00	0.00	900.0	0.0	0.0	0.0	0.00	0.00	0.00
1,000.0	0.00	0.00	1,000.0	0.0	0.0	0.0	0.00	0.00	0.00
1,100.0	0.00	0.00	1,100.0	0.0	0.0	0.0	0.00	0.00	0.00
1,200.0	0.00	0.00	1,200.0	0.0	0.0	0.0	0.00	0.00	0.00
1,300.0	0.00	0.00	1,300.0	0.0	0.0	0.0	0.00	0.00	0.00
1,400.0	0.00	0.00	1,400.0	0.0	0.0	0.0	0.00	0.00	0.00
1,500.0	0.00	0.00	1,500.0	0.0	0.0	0.0	0.00	0.00	0.00
1,600.0	2.00	308.24	1,600.0	1.1	-1.4	1.5	2.00	2.00	0.00
1,700.0	4.00	308.24	1,699.8	4.3	-5.5	5.9	2.00	2.00	0.00
1,800.0	6.00	308.24	1,799.5	9.7	-12.3	13.2	2.00	2.00	0.00
1,900.0	8.00	308.24	1,898.7	17.3	-21.9	23.5	2.00	2.00	0.00
2,000.0	10.00	308.24	1,997.5	26.9	-34.2	36.6	2.00	2.00	0.00
2,100.0	12.00	308.24	2,095.6	38.7	-49.2	52.7	2.00	2.00	0.00
2,200.0	14.00	308.24	2,193.1	52.7	-66.8	71.6	2.00	2.00	0.00
2,300.0	16.00	308.24	2,289.6	68.7	-87.2	93.4	2.00	2.00	0.00
2,400.0	18.00	308.24	2,385.3	86.8	-110.1	118.0	2.00	2.00	0.00
2,500.0	20.00	308.24	2,479.8	106.9	-135.7	145.4	2.00	2.00	0.00
2,600.0	22.00	308.24	2,573.2	129.1	-163.9	175.6	2.00	2.00	0.00
2,700.0	24.00	308.24	2,665.2	153.3	-194.5	208.5	2.00	2.00	0.00
2,771.3	25.43	308.24	2,729.9	171.7	-217.9	233.5	2.00	2.00	0.00
2,800.0	25.43	308.24	2,755.9	179.4	-227.6	243.9	0.00	0.00	0.00
2,900.0	25.43	308.24	2,846.2	205.9	-261.4	280.0	0.00	0.00	0.00
3,000.0	25.43	308.24	2,936.5	232.5	-295.1	316.2	0.00	0.00	0.00
3,100.0	25.43	308.24	3,026.8	259.1	-328.8	352.3	0.00	0.00	0.00
3,200.0	25.43	308.24	3,117.2	285.6	-362.5	388.5	0.00	0.00	0.00
3,300.0	25.43	308.24	3,207.5	312.2	-396.2	424.6	0.00	0.00	0.00
3,400.0	25.43	308.24	3,297.8	338.8	-430.0	460.7	0.00	0.00	0.00
3,500.0	25.43	308.24	3,388.1	365.4	-463.7	496.9	0.00	0.00	0.00
3,600.0	25.43	308.24	3,478.4	391.9	-497.4	533.0	0.00	0.00	0.00
3,700.0	25.43	308.24	3,568.7	418.5	-531.1	569.1	0.00	0.00	0.00
3,800.0	25.43	308.24	3,659.1	445.1	-564.9	605.3	0.00	0.00	0.00
3,900.0	25.43	308.24	3,749.4	471.6	-598.6	641.4	0.00	0.00	0.00
4,000.0	25.43	308.24	3,839.7	498.2	-632.3	677.5	0.00	0.00	0.00
4,100.0	25.43	308.24	3,930.0	524.8	-666.0	713.7	0.00	0.00	0.00
4,200.0	25.43	308.24	4,020.3	551.4	-699.8	749.8	0.00	0.00	0.00
4,300.0	25.43	308.24	4,110.6	577.9	-733.5	785.9	0.00	0.00	0.00
4,400.0	25.43	308.24	4,200.9	604.5	-767.2	822.1	0.00	0.00	0.00
4,500.0	25.43	308.24	4,291.3	631.1	-800.9	858.2	0.00	0.00	0.00
4,600.0	25.43	308.24	4,381.6	657.6	-834.6	894.3	0.00	0.00	0.00
4,700.0	25.43	308.24	4,471.9	684.2	-868.4	930.5	0.00	0.00	0.00
4,800.0	25.43	308.24	4,562.2	710.8	-902.1	966.6	0.00	0.00	0.00
4,900.0	25.43	308.24	4,652.5	737.4	-935.8	1,002.7	0.00	0.00	0.00
5,000.0	25.43	308.24	4,742.8	763.9	-969.5	1,038.9	0.00	0.00	0.00
5,100.0	25.43	308.24	4,833.1	790.5	-1,003.3	1,075.0	0.00	0.00	0.00
5,200.0	25.43	308.24	4,923.5	817.1	-1,037.0	1,111.2	0.00	0.00	0.00

# Bayswater Exploration & Production LLC

## Planning Report

<b>Database:</b>	edm	<b>Local Co-ordinate Reference:</b>	Well BLEHM_04
<b>Company:</b>	Bayswater Exploration & Production, LLC	<b>TVD Reference:</b>	KB @ 5096.0usft (Original Well Elev)
<b>Project:</b>	DJ Basin	<b>MD Reference:</b>	KB @ 5096.0usft (Original Well Elev)
<b>Site:</b>	Blehm Pad	<b>North Reference:</b>	True
<b>Well:</b>	BLEHM_04	<b>Survey Calculation Method:</b>	Minimum Curvature
<b>Wellbore:</b>	Wellbore #1		
<b>Design:</b>	Design #1		

Planned Survey										
Measured Depth (usft)	Inclination (°)	Azimuth (°)	Vertical Depth (usft)	+N/-S (usft)	+E/-W (usft)	Vertical Section (usft)	Dogleg Rate (°/100usft)	Build Rate (°/100usft)	Turn Rate (°/100usft)	
5,300.0	25.43	308.24	5,013.8	843.6	-1,070.7	1,147.3	0.00	0.00	0.00	
5,400.0	25.43	308.24	5,104.1	870.2	-1,104.4	1,183.4	0.00	0.00	0.00	
5,500.0	25.43	308.24	5,194.4	896.8	-1,138.1	1,219.6	0.00	0.00	0.00	
5,600.0	25.43	308.24	5,284.7	923.4	-1,171.9	1,255.7	0.00	0.00	0.00	
5,700.0	25.43	308.24	5,375.0	949.9	-1,205.6	1,291.8	0.00	0.00	0.00	
5,800.0	25.43	308.24	5,465.3	976.5	-1,239.3	1,328.0	0.00	0.00	0.00	
5,900.0	25.43	308.24	5,555.7	1,003.1	-1,273.0	1,364.1	0.00	0.00	0.00	
5,913.9	25.43	308.24	5,568.2	1,006.8	-1,277.7	1,369.1	0.00	0.00	0.00	
6,000.0	23.70	308.24	5,646.5	1,028.9	-1,305.8	1,399.2	2.00	-2.00	0.00	
6,100.0	21.70	308.24	5,738.8	1,052.8	-1,336.2	1,431.7	2.00	-2.00	0.00	
6,200.0	19.70	308.24	5,832.3	1,074.7	-1,363.9	1,461.5	2.00	-2.00	0.00	
6,300.0	17.70	308.24	5,927.0	1,094.5	-1,389.1	1,488.5	2.00	-2.00	0.00	
6,400.0	15.70	308.24	6,022.8	1,112.3	-1,411.7	1,512.7	2.00	-2.00	0.00	
6,500.0	13.70	308.24	6,119.5	1,128.0	-1,431.6	1,534.0	2.00	-2.00	0.00	
6,600.0	11.70	308.24	6,217.1	1,141.6	-1,448.9	1,552.5	2.00	-2.00	0.00	
6,700.0	9.70	308.24	6,315.3	1,153.1	-1,463.5	1,568.2	2.00	-2.00	0.00	
6,800.0	7.70	308.24	6,414.2	1,162.5	-1,475.4	1,580.9	2.00	-2.00	0.00	
6,900.0	5.70	308.24	6,513.5	1,169.7	-1,484.5	1,590.7	2.00	-2.00	0.00	
7,000.0	3.70	308.24	6,613.1	1,174.8	-1,491.0	1,597.6	2.00	-2.00	0.00	
7,100.0	1.70	308.24	6,713.0	1,177.7	-1,494.7	1,601.6	2.00	-2.00	0.00	
7,185.2	0.00	269.77	6,798.2	1,178.5	-1,495.7	1,602.7	2.00	-2.00	0.00	
7,200.0	1.48	269.77	6,813.0	1,178.5	-1,495.9	1,602.8	10.00	10.00	0.00	
7,300.0	11.48	269.77	6,912.2	1,178.4	-1,507.1	1,614.1	10.00	10.00	0.00	
7,400.0	21.48	269.77	7,008.0	1,178.3	-1,535.5	1,642.3	10.00	10.00	0.00	
7,500.0	31.48	269.77	7,097.4	1,178.1	-1,580.0	1,686.6	10.00	10.00	0.00	
7,600.0	41.48	269.77	7,177.7	1,177.9	-1,639.4	1,745.6	10.00	10.00	0.00	
7,700.0	51.48	269.77	7,246.5	1,177.6	-1,711.8	1,817.7	10.00	10.00	0.00	
7,800.0	61.48	269.77	7,301.6	1,177.3	-1,795.1	1,900.5	10.00	10.00	0.00	
7,900.0	71.48	269.77	7,341.5	1,176.9	-1,886.7	1,991.6	10.00	10.00	0.00	
8,000.0	81.48	269.77	7,364.8	1,176.5	-1,983.8	2,088.3	10.00	10.00	0.00	
8,097.7	91.25	269.77	7,371.0	1,176.1	-2,081.1	2,185.1	10.00	10.00	0.00	
8,100.0	91.25	269.77	7,370.9	1,176.1	-2,083.4	2,187.4	0.00	0.00	0.00	
8,200.0	91.25	269.77	7,368.8	1,175.7	-2,183.4	2,286.9	0.00	0.00	0.00	
8,300.0	91.25	269.77	7,366.6	1,175.3	-2,283.4	2,386.4	0.00	0.00	0.00	
8,400.0	91.25	269.77	7,364.4	1,174.9	-2,383.4	2,485.8	0.00	0.00	0.00	
8,500.0	91.25	269.77	7,362.2	1,174.5	-2,483.3	2,585.3	0.00	0.00	0.00	
8,600.0	91.25	269.77	7,360.0	1,174.0	-2,583.3	2,684.8	0.00	0.00	0.00	
8,700.0	91.25	269.77	7,357.9	1,173.6	-2,683.3	2,784.2	0.00	0.00	0.00	
8,800.0	91.25	269.77	7,355.7	1,173.2	-2,783.3	2,883.7	0.00	0.00	0.00	
8,900.0	91.25	269.77	7,353.5	1,172.8	-2,883.2	2,983.2	0.00	0.00	0.00	
9,000.0	91.25	269.77	7,351.3	1,172.4	-2,983.2	3,082.6	0.00	0.00	0.00	
9,100.0	91.25	269.77	7,349.1	1,172.0	-3,083.2	3,182.1	0.00	0.00	0.00	
9,200.0	91.25	269.77	7,346.9	1,171.6	-3,183.2	3,281.6	0.00	0.00	0.00	
9,300.0	91.25	269.77	7,344.8	1,171.2	-3,283.1	3,381.0	0.00	0.00	0.00	
9,400.0	91.25	269.77	7,342.6	1,170.8	-3,383.1	3,480.5	0.00	0.00	0.00	
9,500.0	91.25	269.77	7,340.4	1,170.4	-3,483.1	3,580.0	0.00	0.00	0.00	
9,600.0	91.25	269.77	7,338.2	1,170.0	-3,583.1	3,679.4	0.00	0.00	0.00	
9,700.0	91.25	269.77	7,336.0	1,169.6	-3,683.0	3,778.9	0.00	0.00	0.00	
9,800.0	91.25	269.77	7,333.8	1,169.2	-3,783.0	3,878.4	0.00	0.00	0.00	
9,900.0	91.25	269.77	7,331.7	1,168.8	-3,883.0	3,977.8	0.00	0.00	0.00	
10,000.0	91.25	269.77	7,329.5	1,168.3	-3,983.0	4,077.3	0.00	0.00	0.00	
10,100.0	91.25	269.77	7,327.3	1,167.9	-4,082.9	4,176.8	0.00	0.00	0.00	
10,200.0	91.25	269.77	7,325.1	1,167.5	-4,182.9	4,276.2	0.00	0.00	0.00	
10,300.0	91.25	269.77	7,322.9	1,167.1	-4,282.9	4,375.7	0.00	0.00	0.00	

# Bayswater Exploration & Production LLC

## Planning Report

<b>Database:</b>	edm	<b>Local Co-ordinate Reference:</b>	Well BLEHM_04
<b>Company:</b>	Bayswater Exploration & Production, LLC	<b>TVD Reference:</b>	KB @ 5096.0usft (Original Well Elev)
<b>Project:</b>	DJ Basin	<b>MD Reference:</b>	KB @ 5096.0usft (Original Well Elev)
<b>Site:</b>	Blehm Pad	<b>North Reference:</b>	True
<b>Well:</b>	BLEHM_04	<b>Survey Calculation Method:</b>	Minimum Curvature
<b>Wellbore:</b>	Wellbore #1		
<b>Design:</b>	Design #1		

Planned Survey										
Measured Depth (usft)	Inclination (°)	Azimuth (°)	Vertical Depth (usft)	+N/-S (usft)	+E/-W (usft)	Vertical Section (usft)	Dogleg Rate (°/100usft)	Build Rate (°/100usft)	Turn Rate (°/100usft)	
10,400.0	91.25	269.77	7,320.7	1,166.7	-4,382.9	4,475.2	0.00	0.00	0.00	
10,500.0	91.25	269.77	7,318.6	1,166.3	-4,482.9	4,574.6	0.00	0.00	0.00	
10,600.0	91.25	269.77	7,316.4	1,165.9	-4,582.8	4,674.1	0.00	0.00	0.00	
10,700.0	91.25	269.77	7,314.2	1,165.5	-4,682.8	4,773.6	0.00	0.00	0.00	
10,800.0	91.25	269.77	7,312.0	1,165.1	-4,782.8	4,873.0	0.00	0.00	0.00	
10,900.0	91.25	269.77	7,309.8	1,164.7	-4,882.8	4,972.5	0.00	0.00	0.00	
11,000.0	91.25	269.77	7,307.6	1,164.3	-4,982.7	5,072.0	0.00	0.00	0.00	
11,100.0	91.25	269.77	7,305.5	1,163.9	-5,082.7	5,171.4	0.00	0.00	0.00	
11,200.0	91.25	269.77	7,303.3	1,163.5	-5,182.7	5,270.9	0.00	0.00	0.00	
11,300.0	91.25	269.77	7,301.1	1,163.0	-5,282.7	5,370.4	0.00	0.00	0.00	
11,400.0	91.25	269.77	7,298.9	1,162.6	-5,382.6	5,469.9	0.00	0.00	0.00	
11,500.0	91.25	269.77	7,296.7	1,162.2	-5,482.6	5,569.3	0.00	0.00	0.00	
11,600.0	91.25	269.77	7,294.5	1,161.8	-5,582.6	5,668.8	0.00	0.00	0.00	
11,700.0	91.25	269.77	7,292.4	1,161.4	-5,682.6	5,768.3	0.00	0.00	0.00	
11,800.0	91.25	269.77	7,290.2	1,161.0	-5,782.5	5,867.7	0.00	0.00	0.00	
11,900.0	91.25	269.77	7,288.0	1,160.6	-5,882.5	5,967.2	0.00	0.00	0.00	
12,000.0	91.25	269.77	7,285.8	1,160.2	-5,982.5	6,066.7	0.00	0.00	0.00	
12,100.0	91.25	269.77	7,283.6	1,159.8	-6,082.5	6,166.1	0.00	0.00	0.00	
12,200.0	91.25	269.77	7,281.4	1,159.4	-6,182.4	6,265.6	0.00	0.00	0.00	
12,300.0	91.25	269.77	7,279.3	1,159.0	-6,282.4	6,365.1	0.00	0.00	0.00	
12,400.0	91.25	269.77	7,277.1	1,158.6	-6,382.4	6,464.5	0.00	0.00	0.00	
12,500.0	91.25	269.77	7,274.9	1,158.2	-6,482.4	6,564.0	0.00	0.00	0.00	
12,600.0	91.25	269.77	7,272.7	1,157.7	-6,582.3	6,663.5	0.00	0.00	0.00	
12,700.0	91.25	269.77	7,270.5	1,157.3	-6,682.3	6,762.9	0.00	0.00	0.00	
12,800.0	91.25	269.77	7,268.3	1,156.9	-6,782.3	6,862.4	0.00	0.00	0.00	
12,900.0	91.25	269.77	7,266.2	1,156.5	-6,882.3	6,961.9	0.00	0.00	0.00	
13,000.0	91.25	269.77	7,264.0	1,156.1	-6,982.2	7,061.3	0.00	0.00	0.00	
13,100.0	91.25	269.77	7,261.8	1,155.7	-7,082.2	7,160.8	0.00	0.00	0.00	
13,200.0	91.25	269.77	7,259.6	1,155.3	-7,182.2	7,260.3	0.00	0.00	0.00	
13,300.0	91.25	269.77	7,257.4	1,154.9	-7,282.2	7,359.7	0.00	0.00	0.00	
13,400.0	91.25	269.77	7,255.2	1,154.5	-7,382.1	7,459.2	0.00	0.00	0.00	
13,500.0	91.25	269.77	7,253.1	1,154.1	-7,482.1	7,558.7	0.00	0.00	0.00	
13,600.0	91.25	269.77	7,250.9	1,153.7	-7,582.1	7,658.1	0.00	0.00	0.00	
13,700.0	91.25	269.77	7,248.7	1,153.3	-7,682.1	7,757.6	0.00	0.00	0.00	
13,800.0	91.25	269.77	7,246.5	1,152.9	-7,782.0	7,857.1	0.00	0.00	0.00	
13,900.0	91.25	269.77	7,244.3	1,152.4	-7,882.0	7,956.5	0.00	0.00	0.00	
14,000.0	91.25	269.77	7,242.1	1,152.0	-7,982.0	8,056.0	0.00	0.00	0.00	
14,100.0	91.25	269.77	7,240.0	1,151.6	-8,082.0	8,155.5	0.00	0.00	0.00	
14,200.0	91.25	269.77	7,237.8	1,151.2	-8,181.9	8,254.9	0.00	0.00	0.00	
14,300.0	91.25	269.77	7,235.6	1,150.8	-8,281.9	8,354.4	0.00	0.00	0.00	
14,400.0	91.25	269.77	7,233.4	1,150.4	-8,381.9	8,453.9	0.00	0.00	0.00	
14,500.0	91.25	269.77	7,231.2	1,150.0	-8,481.9	8,553.3	0.00	0.00	0.00	
14,600.0	91.25	269.77	7,229.0	1,149.6	-8,581.8	8,652.8	0.00	0.00	0.00	
14,700.0	91.25	269.77	7,226.9	1,149.2	-8,681.8	8,752.3	0.00	0.00	0.00	
14,800.0	91.25	269.77	7,224.7	1,148.8	-8,781.8	8,851.7	0.00	0.00	0.00	
14,900.0	91.25	269.77	7,222.5	1,148.4	-8,881.8	8,951.2	0.00	0.00	0.00	
15,000.0	91.25	269.77	7,220.3	1,148.0	-8,981.7	9,050.7	0.00	0.00	0.00	
15,100.0	91.25	269.77	7,218.1	1,147.6	-9,081.7	9,150.1	0.00	0.00	0.00	
15,200.0	91.25	269.77	7,215.9	1,147.1	-9,181.7	9,249.6	0.00	0.00	0.00	
15,300.0	91.25	269.77	7,213.8	1,146.7	-9,281.7	9,349.1	0.00	0.00	0.00	
15,400.0	91.25	269.77	7,211.6	1,146.3	-9,381.6	9,448.5	0.00	0.00	0.00	
15,500.0	91.25	269.77	7,209.4	1,145.9	-9,481.6	9,548.0	0.00	0.00	0.00	
15,600.0	91.25	269.77	7,207.2	1,145.5	-9,581.6	9,647.5	0.00	0.00	0.00	
15,700.0	91.25	269.77	7,205.0	1,145.1	-9,681.6	9,746.9	0.00	0.00	0.00	

# Bayswater Exploration & Production LLC

## Planning Report

<b>Database:</b>	edm	<b>Local Co-ordinate Reference:</b>	Well BLEHM_04
<b>Company:</b>	Bayswater Exploration & Production, LLC	<b>TVD Reference:</b>	KB @ 5096.0usft (Original Well Elev)
<b>Project:</b>	DJ Basin	<b>MD Reference:</b>	KB @ 5096.0usft (Original Well Elev)
<b>Site:</b>	Blehm Pad	<b>North Reference:</b>	True
<b>Well:</b>	BLEHM_04	<b>Survey Calculation Method:</b>	Minimum Curvature
<b>Wellbore:</b>	Wellbore #1		
<b>Design:</b>	Design #1		

Planned Survey										
Measured Depth (usft)	Inclination (°)	Azimuth (°)	Vertical Depth (usft)	+N/-S (usft)	+E/-W (usft)	Vertical Section (usft)	Dogleg Rate (°/100usft)	Build Rate (°/100usft)	Turn Rate (°/100usft)	
15,800.0	91.25	269.77	7,202.8	1,144.7	-9,781.5	9,846.4	0.00	0.00	0.00	
15,900.0	91.25	269.77	7,200.7	1,144.3	-9,881.5	9,945.9	0.00	0.00	0.00	
16,000.0	91.25	269.77	7,198.5	1,143.9	-9,981.5	10,045.3	0.00	0.00	0.00	
16,100.0	91.25	269.77	7,196.3	1,143.5	-10,081.5	10,144.8	0.00	0.00	0.00	
16,200.0	91.25	269.77	7,194.1	1,143.1	-10,181.4	10,244.3	0.00	0.00	0.00	
16,300.0	91.25	269.77	7,191.9	1,142.7	-10,281.4	10,343.7	0.00	0.00	0.00	
16,400.0	91.25	269.77	7,189.7	1,142.3	-10,381.4	10,443.2	0.00	0.00	0.00	
16,500.0	91.25	269.77	7,187.6	1,141.9	-10,481.4	10,542.7	0.00	0.00	0.00	
16,600.0	91.25	269.77	7,185.4	1,141.4	-10,581.3	10,642.1	0.00	0.00	0.00	
16,700.0	91.25	269.77	7,183.2	1,141.0	-10,681.3	10,741.6	0.00	0.00	0.00	
16,800.0	91.25	269.77	7,181.0	1,140.6	-10,781.3	10,841.1	0.00	0.00	0.00	
16,900.0	91.25	269.77	7,178.8	1,140.2	-10,881.3	10,940.5	0.00	0.00	0.00	
17,000.0	91.25	269.77	7,176.6	1,139.8	-10,981.2	11,040.0	0.00	0.00	0.00	
17,100.0	91.25	269.77	7,174.5	1,139.4	-11,081.2	11,139.5	0.00	0.00	0.00	
17,200.0	91.25	269.77	7,172.3	1,139.0	-11,181.2	11,238.9	0.00	0.00	0.00	
17,300.0	91.25	269.77	7,170.1	1,138.6	-11,281.2	11,338.4	0.00	0.00	0.00	
17,400.0	91.25	269.77	7,167.9	1,138.2	-11,381.1	11,437.9	0.00	0.00	0.00	
17,500.0	91.25	269.77	7,165.7	1,137.8	-11,481.1	11,537.3	0.00	0.00	0.00	
17,600.0	91.25	269.77	7,163.6	1,137.4	-11,581.1	11,636.8	0.00	0.00	0.00	
17,700.0	91.25	269.77	7,161.4	1,137.0	-11,681.1	11,736.3	0.00	0.00	0.00	
17,716.8	91.25	269.77	7,161.0	1,136.9	-11,697.9	11,753.0	0.00	0.00	0.00	
20" Casing										

Design Targets									
Target Name	Dip Angle (°)	Dip Dir. (°)	TVD (usft)	+N/-S (usft)	+E/-W (usft)	Northing (usft)	Easting (usft)	Latitude	Longitude
- hit/miss target									
- Shape									
BLEHM_04 PBHL	0.00	0.00	7,161.0	1,136.9	-11,697.9	1,453,855.63	3,175,519.76	40° 34' 39.058 N	104° 52' 5.272 W
- plan hits target center									
- Point									
BLEHM_04 LP	0.00	0.00	7,371.0	1,176.1	-2,081.1	1,453,967.93	3,185,135.97	40° 34' 39.472 N	104° 50' 0.640 W
- plan hits target center									
- Point									

Casing Points					
Measured Depth (usft)	Vertical Depth (usft)	Name	Casing Diameter (")	Hole Diameter (")	
17,716.8	7,161.0	20" Casing	20	24	