



Pad Name: Blehm Pad  
Well Name: BLEHM\_05  
Ground Level: 5076.0  
SHL Latitude: 40° 34' 27.779 N  
SHL Longitude: 104° 49' 33.496 W

## SECTION DETAILS

Sec	MD	Inc	Azi	TVD	+N/-S	+E/-W	Dleg	TFace	Vsect	Target
1	0.0	0.00	0.00	0.0	0.0	0.0	0.00	0.00	0.0	
2	1500.0	0.00	0.00	1500.0	0.0	0.0	0.00	0.00	0.0	
3	2574.1	21.48	296.23	2549.1	88.0	-178.5	2.00	296.23	183.5	
4	6093.5	21.48	296.23	5824.0	657.7	-1334.6	0.00	0.00	1371.7	
5	7167.6	0.00	269.77	6873.1	745.7	-1513.1	2.00	180.00	1555.1	
6	8077.7	91.01	269.77	7446.0	743.3	-2096.2	10.00	0.00	2137.0	BLEHM_05 LP
7	17694.6	91.01	269.77	7276.0	704.5	-11711.5	0.00	0.00	11732.6	BLEHM_05 PBHL

## DESIGN TARGET DETAILS

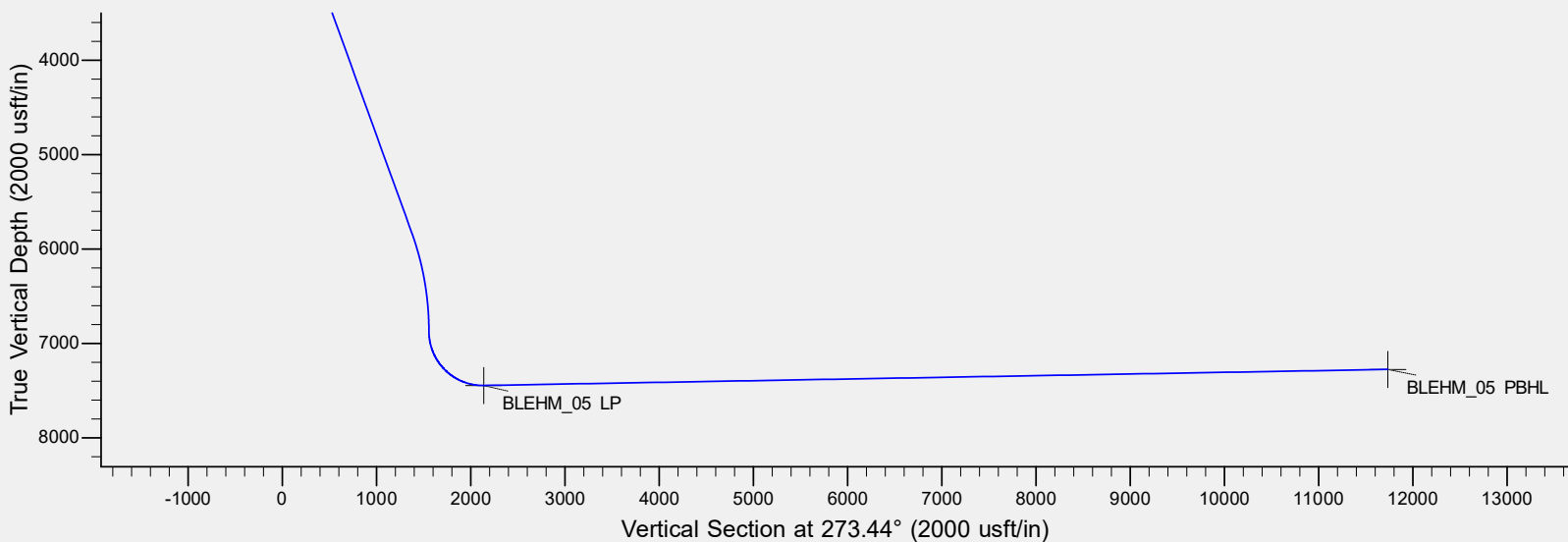
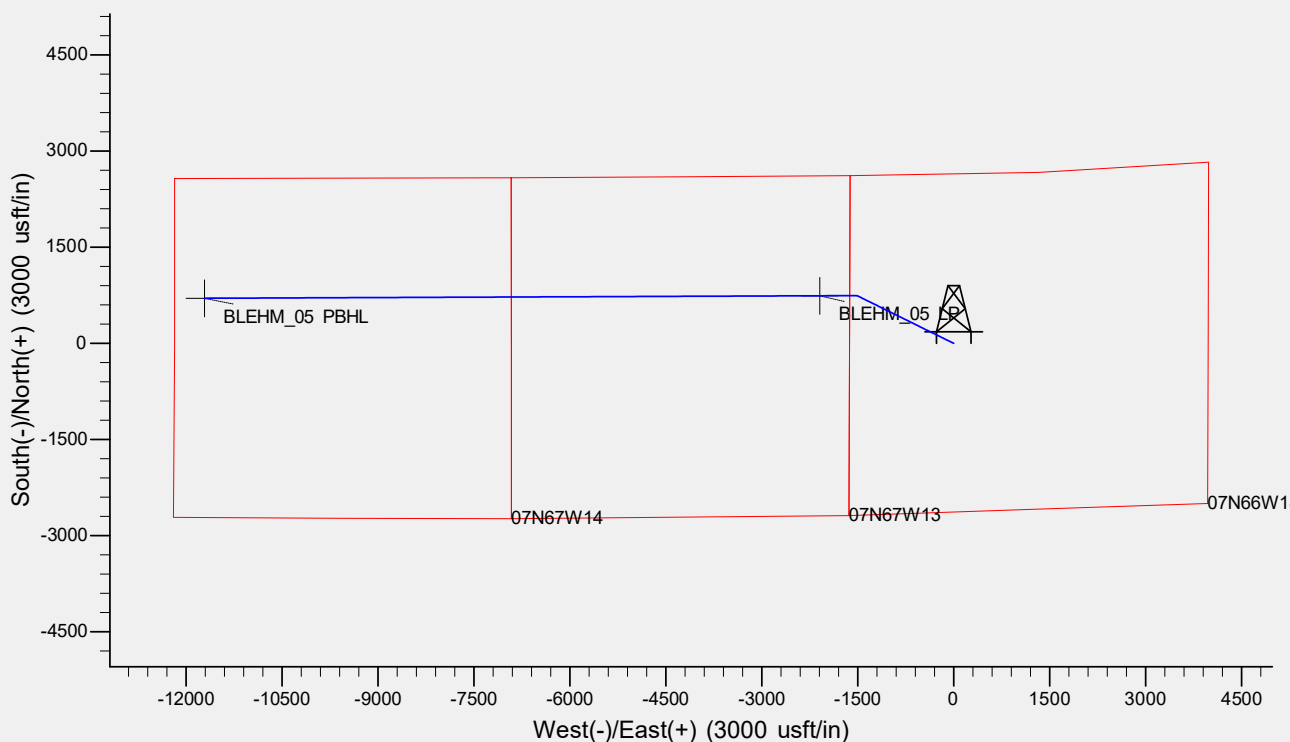
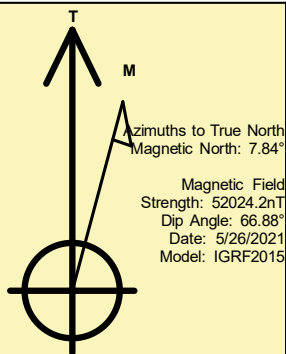
Name	TVD	+N/-S	+E/-W	Northing	Easting	Latitude	Longitude	Shape
BLEHM_05 LP	7446.0	743.3	-2096.2	1453527.84	3185137.61	40° 34' 35.123 N	104° 50' 0.661 W	Point
BLEHM_05 PBHL	- plan hits target center 7276.0	704.5	-11711.5	1453415.92	3175522.89	40° 34' 34.712 N	104° 52' 5.272 W	Point

## REFERENCE INFORMATION

Co-ordinate (N/E) Reference: Well BLEHM\_05, True North  
Vertical (TVD) Reference: KB @ 5096.0usft (Original Well Elev)  
Section (VS) Reference: Slot - (0.0N, 0.0E)  
Measured Depth Reference: KB @ 5096.0usft (Original Well Elev)  
Calculation Method: Minimum Curvature

## CASING DETAILS

No casing data is available



# **Bayswater Exploration & Production, LLC**

**DJ Basin**

**Blehm Pad**

**BLEHM\_05**

**Wellbore #1**

**Plan: Design #1**

## **Standard Planning Report**

**27 May, 2021**

# Bayswater Exploration & Production LLC

## Planning Report

<b>Database:</b>	edm	<b>Local Co-ordinate Reference:</b>	Well BLEHM_05
<b>Company:</b>	Bayswater Exploration & Production, LLC	<b>TVD Reference:</b>	KB @ 5096.0usft (Original Well Elev)
<b>Project:</b>	DJ Basin	<b>MD Reference:</b>	KB @ 5096.0usft (Original Well Elev)
<b>Site:</b>	Blehm Pad	<b>North Reference:</b>	True
<b>Well:</b>	BLEHM_05	<b>Survey Calculation Method:</b>	Minimum Curvature
<b>Wellbore:</b>	Wellbore #1		
<b>Design:</b>	Design #1		

<b>Project</b>	DJ Basin, DJ Basin		
<b>Map System:</b>	US State Plane 1983	<b>System Datum:</b>	Mean Sea Level
<b>Geo Datum:</b>	North American Datum 1983		
<b>Map Zone:</b>	Colorado Northern Zone		

Site		Blehm Pad			
Site Position:		Northing:	1,453,063.27 usft	Latitude:	40° 34' 30.382 N
From:	Lat/Long	Easting:	3,187,154.31 usft	Longitude:	104° 49' 34.572 W
Position Uncertainty:	0.0 usft	Slot Radius:	13-3/16 "	Grid Convergence:	0.44 °

Well	BLEHM_05					
Well Position	+N/-S	-263.4 usft	Northing:	1,452,800.50 usft	Latitude:	40° 34' 27.779 N
	+E/-W	83.1 usft	Easting:	3,187,239.37 usft	Longitude:	104° 49' 33.496 W
Position Uncertainty		0.0 usft	Wellhead Elevation:		Ground Level:	5,076.0 usft

<b>Wellbore</b>	Wellbore #1				
<b>Magnetics</b>	<b>Model Name</b>	<b>Sample Date</b>	<b>Declination (°)</b>	<b>Dip Angle (°)</b>	<b>Field Strength (nT)</b>
	IGRF2015	5/26/2021	7.84	66.88	52,024.20729404

<b>Design</b>	Design #1			
<b>Audit Notes:</b>				
<b>Version:</b>	<b>Phase:</b>	PLAN	<b>Tie On Depth:</b>	0.0
<b>Vertical Section:</b>	<b>Depth From (TVD) (usft)</b>	<b>+N/-S (usft)</b>	<b>+E/-W (usft)</b>	<b>Direction (°)</b>
	0.0	0.0	0.0	273.44

<b>Plan Survey Tool Program</b>	<b>Date</b>	5/26/2021		
<b>Depth From (usft)</b>	<b>Depth To (usft)</b>	<b>Survey (Wellbore)</b>	<b>Tool Name</b>	<b>Remarks</b>
1	0.0	17,694.6	Design #1 (Wellbore #1)	MWD
				OWSG MWD - Standard

<b>Plan Sections</b>										
<b>Measured Depth (usft)</b>	<b>Inclination (°)</b>	<b>Azimuth (°)</b>	<b>Vertical Depth (usft)</b>	<b>+N/-S (usft)</b>	<b>+E/-W (usft)</b>	<b>Dogleg Rate (°/100usft)</b>	<b>Build Rate (°/100usft)</b>	<b>Turn Rate (°/100usft)</b>	<b>TFO (°)</b>	<b>Target</b>
0.0	0.00	0.00	0.0	0.0	0.0	0.00	0.00	0.00	0.00	
1,500.0	0.00	0.00	1,500.0	0.0	0.0	0.00	0.00	0.00	0.00	
2,574.1	21.48	296.23	2,549.1	88.0	-178.5	2.00	2.00	0.00	296.23	
6,093.5	21.48	296.23	5,824.0	657.7	-1,334.6	0.00	0.00	0.00	0.00	
7,167.6	0.00	269.77	6,873.1	745.6	-1,513.1	2.00	-2.00	0.00	180.00	
8,077.7	91.01	269.77	7,446.0	743.3	-2,096.2	10.00	10.00	0.00	0.00	BLEHM_05 LP
17,694.6	91.01	269.77	7,276.0	704.5	-11,711.5	0.00	0.00	0.00	0.00	BLEHM_05 PBHL

# Bayswater Exploration & Production LLC

## Planning Report

<b>Database:</b>	edm	<b>Local Co-ordinate Reference:</b>	Well BLEHM_05
<b>Company:</b>	Bayswater Exploration & Production, LLC	<b>TVD Reference:</b>	KB @ 5096.0usft (Original Well Elev)
<b>Project:</b>	DJ Basin	<b>MD Reference:</b>	KB @ 5096.0usft (Original Well Elev)
<b>Site:</b>	Blehm Pad	<b>North Reference:</b>	True
<b>Well:</b>	BLEHM_05	<b>Survey Calculation Method:</b>	Minimum Curvature
<b>Wellbore:</b>	Wellbore #1		
<b>Design:</b>	Design #1		

Planned Survey									
Measured Depth (usft)	Inclination (°)	Azimuth (°)	Vertical Depth (usft)	+N/-S (usft)	+E/-W (usft)	Vertical Section (usft)	Dogleg Rate (°/100usft)	Build Rate (°/100usft)	Turn Rate (°/100usft)
0.0	0.00	0.00	0.0	0.0	0.0	0.0	0.00	0.00	0.00
100.0	0.00	0.00	100.0	0.0	0.0	0.0	0.00	0.00	0.00
200.0	0.00	0.00	200.0	0.0	0.0	0.0	0.00	0.00	0.00
300.0	0.00	0.00	300.0	0.0	0.0	0.0	0.00	0.00	0.00
400.0	0.00	0.00	400.0	0.0	0.0	0.0	0.00	0.00	0.00
500.0	0.00	0.00	500.0	0.0	0.0	0.0	0.00	0.00	0.00
600.0	0.00	0.00	600.0	0.0	0.0	0.0	0.00	0.00	0.00
700.0	0.00	0.00	700.0	0.0	0.0	0.0	0.00	0.00	0.00
800.0	0.00	0.00	800.0	0.0	0.0	0.0	0.00	0.00	0.00
900.0	0.00	0.00	900.0	0.0	0.0	0.0	0.00	0.00	0.00
1,000.0	0.00	0.00	1,000.0	0.0	0.0	0.0	0.00	0.00	0.00
1,100.0	0.00	0.00	1,100.0	0.0	0.0	0.0	0.00	0.00	0.00
1,200.0	0.00	0.00	1,200.0	0.0	0.0	0.0	0.00	0.00	0.00
1,300.0	0.00	0.00	1,300.0	0.0	0.0	0.0	0.00	0.00	0.00
1,400.0	0.00	0.00	1,400.0	0.0	0.0	0.0	0.00	0.00	0.00
1,500.0	0.00	0.00	1,500.0	0.0	0.0	0.0	0.00	0.00	0.00
1,600.0	2.00	296.23	1,600.0	0.8	-1.6	1.6	2.00	2.00	0.00
1,700.0	4.00	296.23	1,699.8	3.1	-6.3	6.4	2.00	2.00	0.00
1,800.0	6.00	296.23	1,799.5	6.9	-14.1	14.5	2.00	2.00	0.00
1,900.0	8.00	296.23	1,898.7	12.3	-25.0	25.7	2.00	2.00	0.00
2,000.0	10.00	296.23	1,997.5	19.2	-39.0	40.1	2.00	2.00	0.00
2,100.0	12.00	296.23	2,095.6	27.7	-56.2	57.7	2.00	2.00	0.00
2,200.0	14.00	296.23	2,193.1	37.6	-76.3	78.5	2.00	2.00	0.00
2,300.0	16.00	296.23	2,289.6	49.1	-99.5	102.3	2.00	2.00	0.00
2,400.0	18.00	296.23	2,385.3	62.0	-125.8	129.3	2.00	2.00	0.00
2,500.0	20.00	296.23	2,479.8	76.4	-155.0	159.3	2.00	2.00	0.00
2,574.1	21.48	296.23	2,549.1	88.0	-178.5	183.5	2.00	2.00	0.00
2,600.0	21.48	296.23	2,573.2	92.2	-187.0	192.2	0.00	0.00	0.00
2,700.0	21.48	296.23	2,666.3	108.4	-219.9	226.0	0.00	0.00	0.00
2,800.0	21.48	296.23	2,759.3	124.5	-252.7	259.7	0.00	0.00	0.00
2,900.0	21.48	296.23	2,852.4	140.7	-285.6	293.5	0.00	0.00	0.00
3,000.0	21.48	296.23	2,945.4	156.9	-318.4	327.3	0.00	0.00	0.00
3,100.0	21.48	296.23	3,038.5	173.1	-351.3	361.0	0.00	0.00	0.00
3,200.0	21.48	296.23	3,131.5	189.3	-384.1	394.8	0.00	0.00	0.00
3,300.0	21.48	296.23	3,224.6	205.5	-417.0	428.5	0.00	0.00	0.00
3,400.0	21.48	296.23	3,317.6	221.7	-449.8	462.3	0.00	0.00	0.00
3,500.0	21.48	296.23	3,410.7	237.9	-482.7	496.1	0.00	0.00	0.00
3,600.0	21.48	296.23	3,503.7	254.0	-515.5	529.8	0.00	0.00	0.00
3,700.0	21.48	296.23	3,596.8	270.2	-548.4	563.6	0.00	0.00	0.00
3,800.0	21.48	296.23	3,689.9	286.4	-581.2	597.3	0.00	0.00	0.00
3,900.0	21.48	296.23	3,782.9	302.6	-614.0	631.1	0.00	0.00	0.00
4,000.0	21.48	296.23	3,876.0	318.8	-646.9	664.9	0.00	0.00	0.00
4,100.0	21.48	296.23	3,969.0	335.0	-679.7	698.6	0.00	0.00	0.00
4,200.0	21.48	296.23	4,062.1	351.2	-712.6	732.4	0.00	0.00	0.00
4,300.0	21.48	296.23	4,155.1	367.4	-745.4	766.2	0.00	0.00	0.00
4,400.0	21.48	296.23	4,248.2	383.5	-778.3	799.9	0.00	0.00	0.00
4,500.0	21.48	296.23	4,341.2	399.7	-811.1	833.7	0.00	0.00	0.00
4,600.0	21.48	296.23	4,434.3	415.9	-844.0	867.4	0.00	0.00	0.00
4,700.0	21.48	296.23	4,527.3	432.1	-876.8	901.2	0.00	0.00	0.00
4,800.0	21.48	296.23	4,620.4	448.3	-909.7	935.0	0.00	0.00	0.00
4,900.0	21.48	296.23	4,713.4	464.5	-942.5	968.7	0.00	0.00	0.00
5,000.0	21.48	296.23	4,806.5	480.7	-975.4	1,002.5	0.00	0.00	0.00
5,100.0	21.48	296.23	4,899.5	496.9	-1,008.2	1,036.2	0.00	0.00	0.00
5,200.0	21.48	296.23	4,992.6	513.0	-1,041.1	1,070.0	0.00	0.00	0.00

# Bayswater Exploration & Production LLC

## Planning Report

<b>Database:</b>	edm	<b>Local Co-ordinate Reference:</b>	Well BLEHM_05
<b>Company:</b>	Bayswater Exploration & Production, LLC	<b>TVD Reference:</b>	KB @ 5096.0usft (Original Well Elev)
<b>Project:</b>	DJ Basin	<b>MD Reference:</b>	KB @ 5096.0usft (Original Well Elev)
<b>Site:</b>	Blehm Pad	<b>North Reference:</b>	True
<b>Well:</b>	BLEHM_05	<b>Survey Calculation Method:</b>	Minimum Curvature
<b>Wellbore:</b>	Wellbore #1		
<b>Design:</b>	Design #1		

Planned Survey										
Measured Depth (usft)	Inclination (°)	Azimuth (°)	Vertical Depth (usft)	+N/-S (usft)	+E/-W (usft)	Vertical Section (usft)	Dogleg Rate (°/100usft)	Build Rate (°/100usft)	Turn Rate (°/100usft)	
5,300.0	21.48	296.23	5,085.7	529.2	-1,073.9	1,103.8	0.00	0.00	0.00	
5,400.0	21.48	296.23	5,178.7	545.4	-1,106.8	1,137.5	0.00	0.00	0.00	
5,500.0	21.48	296.23	5,271.8	561.6	-1,139.6	1,171.3	0.00	0.00	0.00	
5,600.0	21.48	296.23	5,364.8	577.8	-1,172.5	1,205.1	0.00	0.00	0.00	
5,700.0	21.48	296.23	5,457.9	594.0	-1,205.3	1,238.8	0.00	0.00	0.00	
5,800.0	21.48	296.23	5,550.9	610.2	-1,238.2	1,272.6	0.00	0.00	0.00	
5,900.0	21.48	296.23	5,644.0	626.4	-1,271.0	1,306.3	0.00	0.00	0.00	
6,000.0	21.48	296.23	5,737.0	642.5	-1,303.9	1,340.1	0.00	0.00	0.00	
6,093.5	21.48	296.23	5,824.0	657.7	-1,334.6	1,371.7	0.00	0.00	0.00	
6,100.0	21.35	296.23	5,830.1	658.7	-1,336.7	1,373.9	2.00	-2.00	0.00	
6,200.0	19.35	296.23	5,923.8	674.1	-1,367.9	1,405.9	2.00	-2.00	0.00	
6,300.0	17.35	296.23	6,018.7	688.0	-1,396.1	1,434.9	2.00	-2.00	0.00	
6,400.0	15.35	296.23	6,114.7	700.5	-1,421.4	1,460.9	2.00	-2.00	0.00	
6,500.0	13.35	296.23	6,211.6	711.4	-1,443.6	1,483.7	2.00	-2.00	0.00	
6,600.0	11.35	296.23	6,309.2	720.9	-1,462.8	1,503.5	2.00	-2.00	0.00	
6,700.0	9.35	296.23	6,407.6	728.8	-1,478.9	1,520.0	2.00	-2.00	0.00	
6,800.0	7.35	296.23	6,506.6	735.2	-1,492.0	1,533.4	2.00	-2.00	0.00	
6,900.0	5.35	296.23	6,605.9	740.1	-1,501.9	1,543.6	2.00	-2.00	0.00	
7,000.0	3.35	296.23	6,705.6	743.5	-1,508.7	1,550.6	2.00	-2.00	0.00	
7,100.0	1.35	296.23	6,805.5	745.3	-1,512.4	1,554.4	2.00	-2.00	0.00	
7,167.6	0.00	269.77	6,873.1	745.6	-1,513.1	1,555.1	2.00	-2.00	0.00	
7,200.0	3.24	269.77	6,905.5	745.6	-1,514.0	1,556.0	10.00	10.00	0.00	
7,300.0	13.24	269.77	7,004.4	745.6	-1,528.3	1,570.3	10.00	10.00	0.00	
7,400.0	23.24	269.77	7,099.2	745.5	-1,559.6	1,601.5	10.00	10.00	0.00	
7,500.0	33.24	269.77	7,187.2	745.3	-1,606.8	1,648.7	10.00	10.00	0.00	
7,600.0	43.24	269.77	7,265.6	745.0	-1,668.7	1,710.4	10.00	10.00	0.00	
7,700.0	53.24	269.77	7,332.2	744.7	-1,743.2	1,784.7	10.00	10.00	0.00	
7,800.0	63.24	269.77	7,384.7	744.4	-1,828.1	1,869.5	10.00	10.00	0.00	
7,900.0	73.24	269.77	7,421.8	744.0	-1,920.8	1,962.0	10.00	10.00	0.00	
8,000.0	83.24	269.77	7,442.1	743.6	-2,018.6	2,059.6	10.00	10.00	0.00	
8,077.7	91.01	269.77	7,446.0	743.3	-2,096.2	2,137.0	10.00	10.00	0.00	
8,100.0	91.01	269.77	7,445.6	743.2	-2,118.4	2,159.3	0.00	0.00	0.00	
8,200.0	91.01	269.77	7,443.8	742.8	-2,218.4	2,259.0	0.00	0.00	0.00	
8,300.0	91.01	269.77	7,442.1	742.4	-2,318.4	2,358.8	0.00	0.00	0.00	
8,400.0	91.01	269.77	7,440.3	742.0	-2,418.4	2,458.6	0.00	0.00	0.00	
8,500.0	91.01	269.77	7,438.5	741.6	-2,518.4	2,558.4	0.00	0.00	0.00	
8,600.0	91.01	269.77	7,436.8	741.2	-2,618.4	2,658.1	0.00	0.00	0.00	
8,700.0	91.01	269.77	7,435.0	740.8	-2,718.4	2,757.9	0.00	0.00	0.00	
8,800.0	91.01	269.77	7,433.2	740.4	-2,818.3	2,857.7	0.00	0.00	0.00	
8,900.0	91.01	269.77	7,431.5	740.0	-2,918.3	2,957.5	0.00	0.00	0.00	
9,000.0	91.01	269.77	7,429.7	739.6	-3,018.3	3,057.3	0.00	0.00	0.00	
9,100.0	91.01	269.77	7,427.9	739.2	-3,118.3	3,157.0	0.00	0.00	0.00	
9,200.0	91.01	269.77	7,426.2	738.8	-3,218.3	3,256.8	0.00	0.00	0.00	
9,300.0	91.01	269.77	7,424.4	738.4	-3,318.3	3,356.6	0.00	0.00	0.00	
9,400.0	91.01	269.77	7,422.6	738.0	-3,418.2	3,456.4	0.00	0.00	0.00	
9,500.0	91.01	269.77	7,420.9	737.6	-3,518.2	3,556.2	0.00	0.00	0.00	
9,600.0	91.01	269.77	7,419.1	737.1	-3,618.2	3,655.9	0.00	0.00	0.00	
9,700.0	91.01	269.77	7,417.3	736.7	-3,718.2	3,755.7	0.00	0.00	0.00	
9,800.0	91.01	269.77	7,415.6	736.3	-3,818.2	3,855.5	0.00	0.00	0.00	
9,900.0	91.01	269.77	7,413.8	735.9	-3,918.2	3,955.3	0.00	0.00	0.00	
10,000.0	91.01	269.77	7,412.0	735.5	-4,018.1	4,055.1	0.00	0.00	0.00	
10,100.0	91.01	269.77	7,410.3	735.1	-4,118.1	4,154.8	0.00	0.00	0.00	
10,200.0	91.01	269.77	7,408.5	734.7	-4,218.1	4,254.6	0.00	0.00	0.00	
10,300.0	91.01	269.77	7,406.7	734.3	-4,318.1	4,354.4	0.00	0.00	0.00	

# Bayswater Exploration & Production LLC

## Planning Report

<b>Database:</b>	edm	<b>Local Co-ordinate Reference:</b>	Well BLEHM_05
<b>Company:</b>	Bayswater Exploration & Production, LLC	<b>TVD Reference:</b>	KB @ 5096.0usft (Original Well Elev)
<b>Project:</b>	DJ Basin	<b>MD Reference:</b>	KB @ 5096.0usft (Original Well Elev)
<b>Site:</b>	Blehm Pad	<b>North Reference:</b>	True
<b>Well:</b>	BLEHM_05	<b>Survey Calculation Method:</b>	Minimum Curvature
<b>Wellbore:</b>	Wellbore #1		
<b>Design:</b>	Design #1		

Planned Survey									
Measured Depth (usft)	Inclination (°)	Azimuth (°)	Vertical Depth (usft)	+N/-S (usft)	+E/-W (usft)	Vertical Section (usft)	Dogleg Rate (°/100usft)	Build Rate (°/100usft)	Turn Rate (°/100usft)
10,400.0	91.01	269.77	7,404.9	733.9	-4,418.1	4,454.2	0.00	0.00	0.00
10,500.0	91.01	269.77	7,403.2	733.5	-4,518.1	4,553.9	0.00	0.00	0.00
10,600.0	91.01	269.77	7,401.4	733.1	-4,618.0	4,653.7	0.00	0.00	0.00
10,700.0	91.01	269.77	7,399.6	732.7	-4,718.0	4,753.5	0.00	0.00	0.00
10,800.0	91.01	269.77	7,397.9	732.3	-4,818.0	4,853.3	0.00	0.00	0.00
10,900.0	91.01	269.77	7,396.1	731.9	-4,918.0	4,953.1	0.00	0.00	0.00
11,000.0	91.01	269.77	7,394.3	731.5	-5,018.0	5,052.8	0.00	0.00	0.00
11,100.0	91.01	269.77	7,392.6	731.1	-5,118.0	5,152.6	0.00	0.00	0.00
11,200.0	91.01	269.77	7,390.8	730.7	-5,217.9	5,252.4	0.00	0.00	0.00
11,300.0	91.01	269.77	7,389.0	730.3	-5,317.9	5,352.2	0.00	0.00	0.00
11,400.0	91.01	269.77	7,387.3	729.9	-5,417.9	5,452.0	0.00	0.00	0.00
11,500.0	91.01	269.77	7,385.5	729.5	-5,517.9	5,551.7	0.00	0.00	0.00
11,600.0	91.01	269.77	7,383.7	729.1	-5,617.9	5,651.5	0.00	0.00	0.00
11,700.0	91.01	269.77	7,382.0	728.7	-5,717.9	5,751.3	0.00	0.00	0.00
11,800.0	91.01	269.77	7,380.2	728.3	-5,817.8	5,851.1	0.00	0.00	0.00
11,900.0	91.01	269.77	7,378.4	727.9	-5,917.8	5,950.9	0.00	0.00	0.00
12,000.0	91.01	269.77	7,376.7	727.5	-6,017.8	6,050.6	0.00	0.00	0.00
12,100.0	91.01	269.77	7,374.9	727.1	-6,117.8	6,150.4	0.00	0.00	0.00
12,200.0	91.01	269.77	7,373.1	726.6	-6,217.8	6,250.2	0.00	0.00	0.00
12,300.0	91.01	269.77	7,371.4	726.2	-6,317.8	6,350.0	0.00	0.00	0.00
12,400.0	91.01	269.77	7,369.6	725.8	-6,417.7	6,449.7	0.00	0.00	0.00
12,500.0	91.01	269.77	7,367.8	725.4	-6,517.7	6,549.5	0.00	0.00	0.00
12,600.0	91.01	269.77	7,366.1	725.0	-6,617.7	6,649.3	0.00	0.00	0.00
12,700.0	91.01	269.77	7,364.3	724.6	-6,717.7	6,749.1	0.00	0.00	0.00
12,800.0	91.01	269.77	7,362.5	724.2	-6,817.7	6,848.9	0.00	0.00	0.00
12,900.0	91.01	269.77	7,360.8	723.8	-6,917.7	6,948.6	0.00	0.00	0.00
13,000.0	91.01	269.77	7,359.0	723.4	-7,017.6	7,048.4	0.00	0.00	0.00
13,100.0	91.01	269.77	7,357.2	723.0	-7,117.6	7,148.2	0.00	0.00	0.00
13,200.0	91.01	269.77	7,355.5	722.6	-7,217.6	7,248.0	0.00	0.00	0.00
13,300.0	91.01	269.77	7,353.7	722.2	-7,317.6	7,347.8	0.00	0.00	0.00
13,400.0	91.01	269.77	7,351.9	721.8	-7,417.6	7,447.5	0.00	0.00	0.00
13,500.0	91.01	269.77	7,350.1	721.4	-7,517.6	7,547.3	0.00	0.00	0.00
13,600.0	91.01	269.77	7,348.4	721.0	-7,617.5	7,647.1	0.00	0.00	0.00
13,700.0	91.01	269.77	7,346.6	720.6	-7,717.5	7,746.9	0.00	0.00	0.00
13,800.0	91.01	269.77	7,344.8	720.2	-7,817.5	7,846.6	0.00	0.00	0.00
13,900.0	91.01	269.77	7,343.1	719.8	-7,917.5	7,946.4	0.00	0.00	0.00
14,000.0	91.01	269.77	7,341.3	719.4	-8,017.5	8,046.2	0.00	0.00	0.00
14,100.0	91.01	269.77	7,339.5	719.0	-8,117.5	8,146.0	0.00	0.00	0.00
14,200.0	91.01	269.77	7,337.8	718.6	-8,217.4	8,245.8	0.00	0.00	0.00
14,300.0	91.01	269.77	7,336.0	718.2	-8,317.4	8,345.5	0.00	0.00	0.00
14,400.0	91.01	269.77	7,334.2	717.8	-8,417.4	8,445.3	0.00	0.00	0.00
14,500.0	91.01	269.77	7,332.5	717.4	-8,517.4	8,545.1	0.00	0.00	0.00
14,600.0	91.01	269.77	7,330.7	717.0	-8,617.4	8,644.9	0.00	0.00	0.00
14,700.0	91.01	269.77	7,328.9	716.6	-8,717.4	8,744.7	0.00	0.00	0.00
14,800.0	91.01	269.77	7,327.2	716.1	-8,817.3	8,844.4	0.00	0.00	0.00
14,900.0	91.01	269.77	7,325.4	715.7	-8,917.3	8,944.2	0.00	0.00	0.00
15,000.0	91.01	269.77	7,323.6	715.3	-9,017.3	9,044.0	0.00	0.00	0.00
15,100.0	91.01	269.77	7,321.9	714.9	-9,117.3	9,143.8	0.00	0.00	0.00
15,200.0	91.01	269.77	7,320.1	714.5	-9,217.3	9,243.6	0.00	0.00	0.00
15,300.0	91.01	269.77	7,318.3	714.1	-9,317.3	9,343.3	0.00	0.00	0.00
15,400.0	91.01	269.77	7,316.6	713.7	-9,417.2	9,443.1	0.00	0.00	0.00
15,500.0	91.01	269.77	7,314.8	713.3	-9,517.2	9,542.9	0.00	0.00	0.00
15,600.0	91.01	269.77	7,313.0	712.9	-9,617.2	9,642.7	0.00	0.00	0.00
15,700.0	91.01	269.77	7,311.3	712.5	-9,717.2	9,742.4	0.00	0.00	0.00

# Bayswater Exploration & Production LLC

## Planning Report

<b>Database:</b>	edm	<b>Local Co-ordinate Reference:</b>	Well BLEHM_05
<b>Company:</b>	Bayswater Exploration & Production, LLC	<b>TVD Reference:</b>	KB @ 5096.0usft (Original Well Elev)
<b>Project:</b>	DJ Basin	<b>MD Reference:</b>	KB @ 5096.0usft (Original Well Elev)
<b>Site:</b>	Blehm Pad	<b>North Reference:</b>	True
<b>Well:</b>	BLEHM_05	<b>Survey Calculation Method:</b>	Minimum Curvature
<b>Wellbore:</b>	Wellbore #1		
<b>Design:</b>	Design #1		

Planned Survey										
Measured Depth (usft)	Inclination (°)	Azimuth (°)	Vertical Depth (usft)	+N/-S (usft)	+E/-W (usft)	Vertical Section (usft)	Dogleg Rate (°/100usft)	Build Rate (°/100usft)	Turn Rate (°/100usft)	
15,800.0	91.01	269.77	7,309.5	712.1	-9,817.2	9,842.2	0.00	0.00	0.00	
15,900.0	91.01	269.77	7,307.7	711.7	-9,917.2	9,942.0	0.00	0.00	0.00	
16,000.0	91.01	269.77	7,306.0	711.3	-10,017.2	10,041.8	0.00	0.00	0.00	
16,100.0	91.01	269.77	7,304.2	710.9	-10,117.1	10,141.6	0.00	0.00	0.00	
16,200.0	91.01	269.77	7,302.4	710.5	-10,217.1	10,241.3	0.00	0.00	0.00	
16,300.0	91.01	269.77	7,300.7	710.1	-10,317.1	10,341.1	0.00	0.00	0.00	
16,400.0	91.01	269.77	7,298.9	709.7	-10,417.1	10,440.9	0.00	0.00	0.00	
16,500.0	91.01	269.77	7,297.1	709.3	-10,517.1	10,540.7	0.00	0.00	0.00	
16,600.0	91.01	269.77	7,295.3	708.9	-10,617.1	10,640.5	0.00	0.00	0.00	
16,700.0	91.01	269.77	7,293.6	708.5	-10,717.0	10,740.2	0.00	0.00	0.00	
16,800.0	91.01	269.77	7,291.8	708.1	-10,817.0	10,840.0	0.00	0.00	0.00	
16,900.0	91.01	269.77	7,290.0	707.7	-10,917.0	10,939.8	0.00	0.00	0.00	
17,000.0	91.01	269.77	7,288.3	707.3	-11,017.0	11,039.6	0.00	0.00	0.00	
17,100.0	91.01	269.77	7,286.5	706.9	-11,117.0	11,139.4	0.00	0.00	0.00	
17,200.0	91.01	269.77	7,284.7	706.5	-11,217.0	11,239.1	0.00	0.00	0.00	
17,300.0	91.01	269.77	7,283.0	706.1	-11,316.9	11,338.9	0.00	0.00	0.00	
17,400.0	91.01	269.77	7,281.2	705.6	-11,416.9	11,438.7	0.00	0.00	0.00	
17,500.0	91.01	269.77	7,279.4	705.2	-11,516.9	11,538.5	0.00	0.00	0.00	
17,600.0	91.01	269.77	7,277.7	704.8	-11,616.9	11,638.2	0.00	0.00	0.00	
17,694.6	91.01	269.77	7,276.0	704.5	-11,711.5	11,732.6	0.00	0.00	0.00	
20" Casing										

Design Targets									
Target Name	Dip Angle (°)	Dip Dir. (°)	TVD (usft)	+N/-S (usft)	+E/-W (usft)	Northing (usft)	Easting (usft)	Latitude	Longitude
BLEHM_05 PBHL - hit/miss target - Shape - Point	0.00	0.00	7,276.0	704.5	-11,711.5	1,453,415.92	3,175,522.89	40° 34' 34.712 N	104° 52' 5.272 W
BLEHM_05 LP - plan hits target center - Point	0.00	0.00	7,446.0	743.3	-2,096.2	1,453,527.84	3,185,137.61	40° 34' 35.123 N	104° 50' 0.661 W

Casing Points					
Measured Depth (usft)	Vertical Depth (usft)	Name	Casing Diameter (")	Hole Diameter (")	
17,694.6	7,276.0	20" Casing	20	24	