



Pad Name: Blehm Pad  
Well Name: BLEHM\_11  
Ground Level: 5076.0  
SHL Latitude: 40° 34' 27.350 N  
SHL Longitude: 104° 49' 32.477 W

## SECTION DETAILS

Sec	MD	Inc	Azi	TVD	+N/-S	+E/-W	Dleg	TFace	VSec	Target
1	0.0	0.00	0.00	0.0	0.0	0.0	0.00	0.00	0.0	
2	1500.0	0.00	0.00	1500.0	0.0	0.0	0.00	0.00	0.0	
3	3208.8	34.18	220.92	3109.2	-373.8	-324.0	2.00	220.92	379.1	
4	5807.1	34.18	220.92	5258.9	-1476.7	-1280.0	0.00	0.00	1497.6	
5	7515.8	0.00	269.77	6868.1	-1850.4	-1604.0	2.00	180.00	1876.7	
6	8423.6	90.77	269.77	7441.0	-1852.8	-2184.7	10.00	0.00	2450.4	BLEHM_11 LP
7	18042.5	90.77	269.77	7311.0	-1891.6	-11802.7	0.00	0.00	11953.3	BLEHM_11 PBHL

## DESIGN TARGET DETAILS

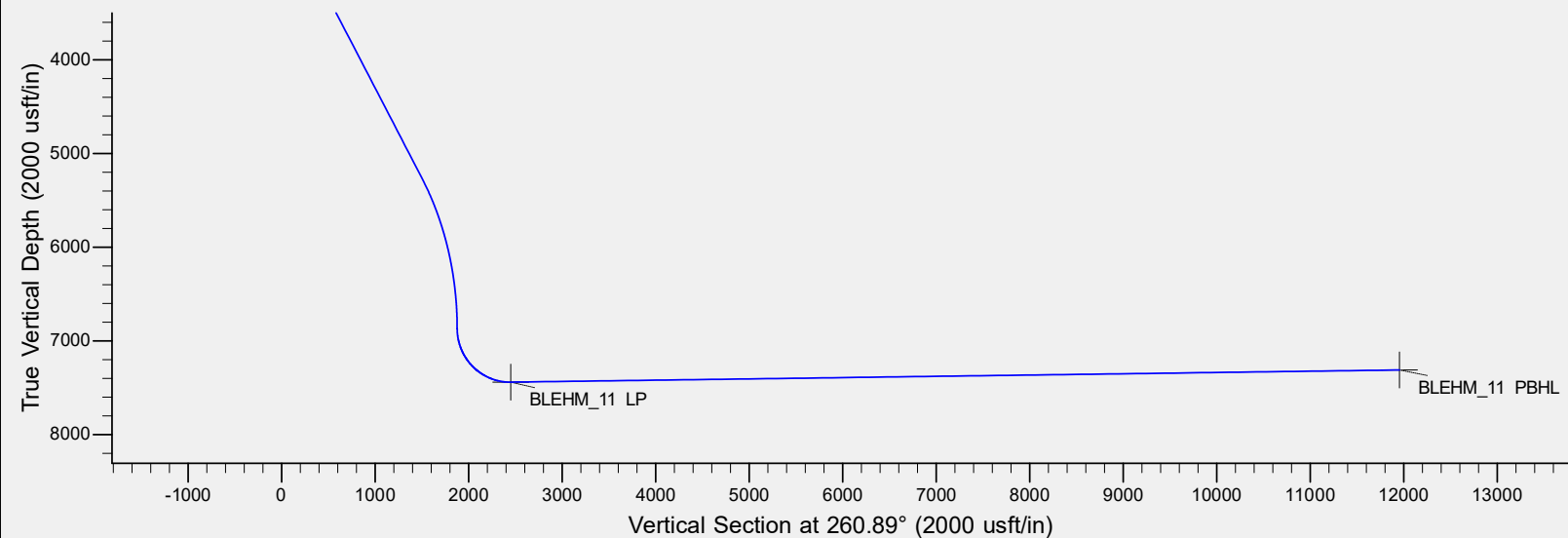
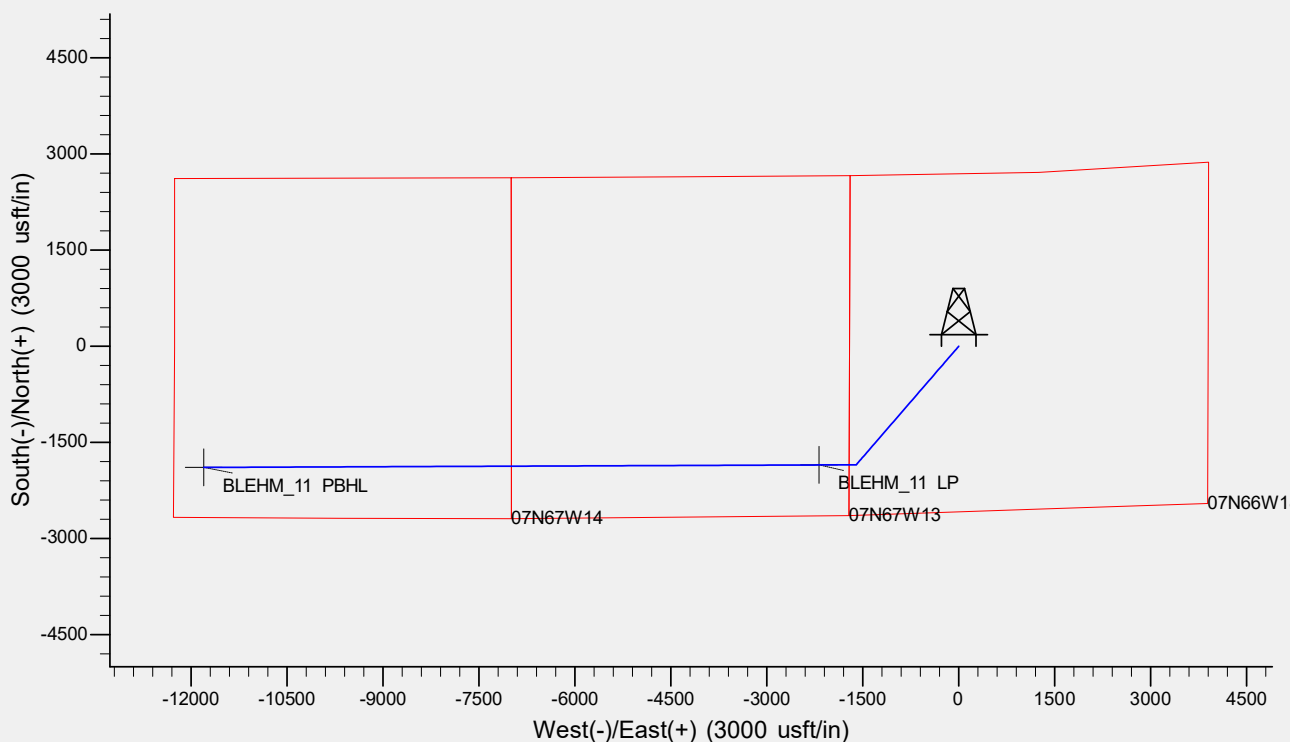
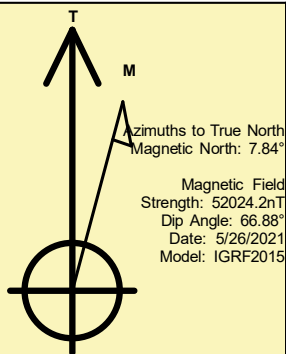
Name	TVD	+N/-S	+E/-W	Northing	Easting	Latitude	Longitude	Shape
BLEHM_11 LP	7441.0	-1852.8	-2184.7	1450888.40	3185147.72	40° 34' 9.041 N	104° 50' 0.787 W	Point
BLEHM_11 PBHL	- plan hits target center 7311.0	-1891.6	-11802.7	1450776.46	3175530.31	40° 34' 8.630 N	104° 52' 5.419 W	Point
	- plan hits target center							

## REFERENCE INFORMATION

Co-ordinate (N/E) Reference: Well BLEHM\_11, True North  
Vertical (TVD) Reference: KB @ 5096.0usft (Original Well Elev)  
Section (VS) Reference: Slot - (0.0N, 0.0E)  
Measured Depth Reference: KB @ 5096.0usft (Original Well Elev)  
Calculation Method: Minimum Curvature

## CASING DETAILS

No casing data is available



# **Bayswater Exploration & Production, LLC**

**DJ Basin**

**Blehm Pad**

**BLEHM\_11**

**Wellbore #1**

**Plan: Design #1**

## **Standard Planning Report**

**28 May, 2021**

# Bayswater Exploration & Production LLC

## Planning Report

<b>Database:</b>	edm	<b>Local Co-ordinate Reference:</b>	Well BLEHM_11
<b>Company:</b>	Bayswater Exploration & Production, LLC	<b>TVD Reference:</b>	KB @ 5096.0usft (Original Well Elev)
<b>Project:</b>	DJ Basin	<b>MD Reference:</b>	KB @ 5096.0usft (Original Well Elev)
<b>Site:</b>	Blehm Pad	<b>North Reference:</b>	True
<b>Well:</b>	BLEHM_11	<b>Survey Calculation Method:</b>	Minimum Curvature
<b>Wellbore:</b>	Wellbore #1		
<b>Design:</b>	Design #1		

<b>Project</b>	DJ Basin, DJ Basin		
<b>Map System:</b>	US State Plane 1983	<b>System Datum:</b>	Mean Sea Level
<b>Geo Datum:</b>	North American Datum 1983		
<b>Map Zone:</b>	Colorado Northern Zone		

Site		Blehm Pad			
Site Position:		Northing:	1,453,063.27 usft	Latitude:	40° 34' 30.382 N
From:	Lat/Long	Easting:	3,187,154.31 usft	Longitude:	104° 49' 34.572 W
Position Uncertainty:	0.0 usft	Slot Radius:	13-3/16 "	Grid Convergence:	0.44 °

Well	BLEHM_11					
Well Position	+N/-S	-306.8 usft	Northing:	1,452,757.74 usft	Latitude:	40° 34' 27.350 N
	+E/-W	161.7 usft	Easting:	3,187,318.31 usft	Longitude:	104° 49' 32.477 W
Position Uncertainty		0.0 usft	Wellhead Elevation:		Ground Level:	5,076.0 usft

<b>Wellbore</b>	Wellbore #1				
<b>Magnetics</b>	<b>Model Name</b>	<b>Sample Date</b>	<b>Declination (°)</b>	<b>Dip Angle (°)</b>	<b>Field Strength (nT)</b>
	IGRF2015	5/26/2021	7.84	66.88	52,024.17553748

Design	Design #1			
Audit Notes:				
Version:	Phase:	PLAN	Tie On Depth:	0.0
Vertical Section:	Depth From (TVD) (usft)	+N/-S (usft)	+E/-W (usft)	Direction (°)
	0.0	0.0	0.0	260.89

<b>Plan Survey Tool Program</b>	<b>Date</b>	5/26/2021			
<b>Depth From (usft)</b>	<b>Depth To (usft)</b>	<b>Survey (Wellbore)</b>	<b>Tool Name</b>	<b>Remarks</b>	
1	0.0	18,042.5	Design #1 (Wellbore #1)	MWD	
				OWSG MWD - Standard	

<b>Plan Sections</b>										
<b>Measured Depth (usft)</b>	<b>Inclination (°)</b>	<b>Azimuth (°)</b>	<b>Vertical Depth (usft)</b>	<b>+N/-S (usft)</b>	<b>+E/-W (usft)</b>	<b>Dogleg Rate (°/100usft)</b>	<b>Build Rate (°/100usft)</b>	<b>Turn Rate (°/100usft)</b>	<b>TFO (°)</b>	<b>Target</b>
0.0	0.00	0.00	0.0	0.0	0.0	0.00	0.00	0.00	0.00	
1,500.0	0.00	0.00	1,500.0	0.0	0.0	0.00	0.00	0.00	0.00	
3,208.8	34.18	220.92	3,109.2	-373.8	-324.0	2.00	2.00	0.00	220.92	
5,807.1	34.18	220.92	5,258.9	-1,476.7	-1,280.0	0.00	0.00	0.00	0.00	
7,515.8	0.00	269.77	6,868.1	-1,850.4	-1,604.0	2.00	-2.00	0.00	180.00	
8,423.6	90.77	269.77	7,441.0	-1,852.8	-2,184.7	10.00	10.00	0.00	0.00	BLEHM_11 LP
18,042.5	90.77	269.77	7,311.0	-1,891.6	-11,802.7	0.00	0.00	0.00	0.00	BLEHM_11 PBHL

# Bayswater Exploration & Production LLC

## Planning Report

<b>Database:</b>	edm	<b>Local Co-ordinate Reference:</b>	Well BLEHM_11
<b>Company:</b>	Bayswater Exploration & Production, LLC	<b>TVD Reference:</b>	KB @ 5096.0usft (Original Well Elev)
<b>Project:</b>	DJ Basin	<b>MD Reference:</b>	KB @ 5096.0usft (Original Well Elev)
<b>Site:</b>	Blehm Pad	<b>North Reference:</b>	True
<b>Well:</b>	BLEHM_11	<b>Survey Calculation Method:</b>	Minimum Curvature
<b>Wellbore:</b>	Wellbore #1		
<b>Design:</b>	Design #1		

Planned Survey									
Measured Depth (usft)	Inclination (°)	Azimuth (°)	Vertical Depth (usft)	+N/-S (usft)	+E/-W (usft)	Vertical Section (usft)	Dogleg Rate (°/100usft)	Build Rate (°/100usft)	Turn Rate (°/100usft)
0.0	0.00	0.00	0.0	0.0	0.0	0.0	0.00	0.00	0.00
100.0	0.00	0.00	100.0	0.0	0.0	0.0	0.00	0.00	0.00
200.0	0.00	0.00	200.0	0.0	0.0	0.0	0.00	0.00	0.00
300.0	0.00	0.00	300.0	0.0	0.0	0.0	0.00	0.00	0.00
400.0	0.00	0.00	400.0	0.0	0.0	0.0	0.00	0.00	0.00
500.0	0.00	0.00	500.0	0.0	0.0	0.0	0.00	0.00	0.00
600.0	0.00	0.00	600.0	0.0	0.0	0.0	0.00	0.00	0.00
700.0	0.00	0.00	700.0	0.0	0.0	0.0	0.00	0.00	0.00
800.0	0.00	0.00	800.0	0.0	0.0	0.0	0.00	0.00	0.00
900.0	0.00	0.00	900.0	0.0	0.0	0.0	0.00	0.00	0.00
1,000.0	0.00	0.00	1,000.0	0.0	0.0	0.0	0.00	0.00	0.00
1,100.0	0.00	0.00	1,100.0	0.0	0.0	0.0	0.00	0.00	0.00
1,200.0	0.00	0.00	1,200.0	0.0	0.0	0.0	0.00	0.00	0.00
1,300.0	0.00	0.00	1,300.0	0.0	0.0	0.0	0.00	0.00	0.00
1,400.0	0.00	0.00	1,400.0	0.0	0.0	0.0	0.00	0.00	0.00
1,500.0	0.00	0.00	1,500.0	0.0	0.0	0.0	0.00	0.00	0.00
1,600.0	2.00	220.92	1,600.0	-1.3	-1.1	1.3	2.00	2.00	0.00
1,700.0	4.00	220.92	1,699.8	-5.3	-4.6	5.3	2.00	2.00	0.00
1,800.0	6.00	220.92	1,799.5	-11.9	-10.3	12.0	2.00	2.00	0.00
1,900.0	8.00	220.92	1,898.7	-21.1	-18.3	21.4	2.00	2.00	0.00
2,000.0	10.00	220.92	1,997.5	-32.9	-28.5	33.4	2.00	2.00	0.00
2,100.0	12.00	220.92	2,095.6	-47.3	-41.0	48.0	2.00	2.00	0.00
2,200.0	14.00	220.92	2,193.1	-64.3	-55.7	65.2	2.00	2.00	0.00
2,300.0	16.00	220.92	2,289.6	-83.9	-72.7	85.0	2.00	2.00	0.00
2,400.0	18.00	220.92	2,385.3	-105.9	-91.8	107.4	2.00	2.00	0.00
2,500.0	20.00	220.92	2,479.8	-130.5	-113.2	132.4	2.00	2.00	0.00
2,600.0	22.00	220.92	2,573.2	-157.6	-136.6	159.9	2.00	2.00	0.00
2,700.0	24.00	220.92	2,665.2	-187.1	-162.2	189.8	2.00	2.00	0.00
2,800.0	26.00	220.92	2,755.8	-219.1	-189.9	222.2	2.00	2.00	0.00
2,900.0	28.00	220.92	2,844.9	-253.4	-219.6	257.0	2.00	2.00	0.00
3,000.0	30.00	220.92	2,932.4	-290.0	-251.4	294.1	2.00	2.00	0.00
3,100.0	32.00	220.92	3,018.1	-328.9	-285.1	333.6	2.00	2.00	0.00
3,200.0	34.00	220.92	3,102.0	-370.1	-320.8	375.3	2.00	2.00	0.00
3,208.8	34.18	220.92	3,109.2	-373.8	-324.0	379.1	2.00	2.00	0.00
3,300.0	34.18	220.92	3,184.7	-412.5	-357.6	418.4	0.00	0.00	0.00
3,400.0	34.18	220.92	3,267.4	-455.0	-394.4	461.4	0.00	0.00	0.00
3,500.0	34.18	220.92	3,350.2	-497.4	-431.2	504.5	0.00	0.00	0.00
3,600.0	34.18	220.92	3,432.9	-539.9	-468.0	547.5	0.00	0.00	0.00
3,700.0	34.18	220.92	3,515.6	-582.3	-504.8	590.5	0.00	0.00	0.00
3,800.0	34.18	220.92	3,598.4	-624.7	-541.6	633.6	0.00	0.00	0.00
3,900.0	34.18	220.92	3,681.1	-667.2	-578.3	676.6	0.00	0.00	0.00
4,000.0	34.18	220.92	3,763.8	-709.6	-615.1	719.7	0.00	0.00	0.00
4,100.0	34.18	220.92	3,846.6	-752.1	-651.9	762.7	0.00	0.00	0.00
4,200.0	34.18	220.92	3,929.3	-794.5	-688.7	805.8	0.00	0.00	0.00
4,300.0	34.18	220.92	4,012.0	-837.0	-725.5	848.8	0.00	0.00	0.00
4,400.0	34.18	220.92	4,094.8	-879.4	-762.3	891.9	0.00	0.00	0.00
4,500.0	34.18	220.92	4,177.5	-921.9	-799.1	934.9	0.00	0.00	0.00
4,600.0	34.18	220.92	4,260.2	-964.3	-835.9	978.0	0.00	0.00	0.00
4,700.0	34.18	220.92	4,343.0	-1,006.8	-872.7	1,021.0	0.00	0.00	0.00
4,800.0	34.18	220.92	4,425.7	-1,049.2	-909.5	1,064.1	0.00	0.00	0.00
4,900.0	34.18	220.92	4,508.4	-1,091.6	-946.3	1,107.1	0.00	0.00	0.00
5,000.0	34.18	220.92	4,591.2	-1,134.1	-983.1	1,150.2	0.00	0.00	0.00
5,100.0	34.18	220.92	4,673.9	-1,176.5	-1,019.9	1,193.2	0.00	0.00	0.00
5,200.0	34.18	220.92	4,756.6	-1,219.0	-1,056.7	1,236.2	0.00	0.00	0.00

# Bayswater Exploration & Production LLC

## Planning Report

<b>Database:</b>	edm	<b>Local Co-ordinate Reference:</b>	Well BLEHM_11
<b>Company:</b>	Bayswater Exploration & Production, LLC	<b>TVD Reference:</b>	KB @ 5096.0usft (Original Well Elev)
<b>Project:</b>	DJ Basin	<b>MD Reference:</b>	KB @ 5096.0usft (Original Well Elev)
<b>Site:</b>	Blehm Pad	<b>North Reference:</b>	True
<b>Well:</b>	BLEHM_11	<b>Survey Calculation Method:</b>	Minimum Curvature
<b>Wellbore:</b>	Wellbore #1		
<b>Design:</b>	Design #1		

Planned Survey									
Measured Depth (usft)	Inclination (°)	Azimuth (°)	Vertical Depth (usft)	+N/-S (usft)	+E/-W (usft)	Vertical Section (usft)	Dogleg Rate (°/100usft)	Build Rate (°/100usft)	Turn Rate (°/100usft)
5,300.0	34.18	220.92	4,839.4	-1,261.4	-1,093.5	1,279.3	0.00	0.00	0.00
5,400.0	34.18	220.92	4,922.1	-1,303.9	-1,130.2	1,322.3	0.00	0.00	0.00
5,500.0	34.18	220.92	5,004.8	-1,346.3	-1,167.0	1,365.4	0.00	0.00	0.00
5,600.0	34.18	220.92	5,087.6	-1,388.8	-1,203.8	1,408.4	0.00	0.00	0.00
5,700.0	34.18	220.92	5,170.3	-1,431.2	-1,240.6	1,451.5	0.00	0.00	0.00
5,800.0	34.18	220.92	5,253.0	-1,473.7	-1,277.4	1,494.5	0.00	0.00	0.00
5,807.1	34.18	220.92	5,258.9	-1,476.7	-1,280.0	1,497.6	0.00	0.00	0.00
5,900.0	32.32	220.92	5,336.6	-1,515.1	-1,313.4	1,536.6	2.00	-2.00	0.00
6,000.0	30.32	220.92	5,422.0	-1,554.4	-1,347.4	1,576.4	2.00	-2.00	0.00
6,100.0	28.32	220.92	5,509.2	-1,591.4	-1,379.5	1,614.0	2.00	-2.00	0.00
6,200.0	26.32	220.92	5,598.0	-1,626.1	-1,409.6	1,649.1	2.00	-2.00	0.00
6,300.0	24.32	220.92	5,688.4	-1,658.4	-1,437.6	1,681.9	2.00	-2.00	0.00
6,400.0	22.32	220.92	5,780.3	-1,688.3	-1,463.5	1,712.2	2.00	-2.00	0.00
6,500.0	20.32	220.92	5,873.4	-1,715.8	-1,487.3	1,740.1	2.00	-2.00	0.00
6,600.0	18.32	220.92	5,967.8	-1,740.8	-1,509.0	1,765.4	2.00	-2.00	0.00
6,700.0	16.32	220.92	6,063.2	-1,763.3	-1,528.5	1,788.2	2.00	-2.00	0.00
6,800.0	14.32	220.92	6,159.7	-1,783.2	-1,545.8	1,808.5	2.00	-2.00	0.00
6,900.0	12.32	220.92	6,257.0	-1,800.6	-1,560.9	1,826.1	2.00	-2.00	0.00
7,000.0	10.32	220.92	6,355.0	-1,815.4	-1,573.7	1,841.2	2.00	-2.00	0.00
7,100.0	8.32	220.92	6,453.7	-1,827.7	-1,584.3	1,853.6	2.00	-2.00	0.00
7,200.0	6.32	220.92	6,552.9	-1,837.3	-1,592.7	1,863.3	2.00	-2.00	0.00
7,300.0	4.32	220.92	6,652.5	-1,844.3	-1,598.7	1,870.4	2.00	-2.00	0.00
7,400.0	2.32	220.92	6,752.3	-1,848.7	-1,602.5	1,874.9	2.00	-2.00	0.00
7,500.0	0.32	220.92	6,852.3	-1,850.4	-1,604.0	1,876.6	2.00	-2.00	0.00
7,515.8	0.00	269.77	6,868.1	-1,850.4	-1,604.0	1,876.7	2.00	-2.00	0.00
7,600.0	8.42	269.77	6,952.0	-1,850.5	-1,610.2	1,882.8	10.00	10.00	0.00
7,700.0	18.42	269.77	7,049.1	-1,850.6	-1,633.4	1,905.7	10.00	10.00	0.00
7,800.0	28.42	269.77	7,140.8	-1,850.7	-1,673.1	1,944.9	10.00	10.00	0.00
7,900.0	38.42	269.77	7,224.1	-1,850.9	-1,728.1	1,999.2	10.00	10.00	0.00
8,000.0	48.42	269.77	7,296.7	-1,851.2	-1,796.7	2,067.0	10.00	10.00	0.00
8,100.0	58.42	269.77	7,356.2	-1,851.5	-1,876.9	2,146.3	10.00	10.00	0.00
8,200.0	68.42	269.77	7,400.9	-1,851.9	-1,966.2	2,234.5	10.00	10.00	0.00
8,300.0	78.42	269.77	7,429.4	-1,852.3	-2,062.0	2,329.1	10.00	10.00	0.00
8,400.0	88.42	269.77	7,440.8	-1,852.7	-2,161.2	2,427.1	10.00	10.00	0.00
8,423.6	90.77	269.77	7,441.0	-1,852.8	-2,184.7	2,450.4	10.00	10.00	0.00
8,500.0	90.77	269.77	7,440.0	-1,853.1	-2,261.2	2,525.9	0.00	0.00	0.00
8,600.0	90.77	269.77	7,438.6	-1,853.5	-2,361.1	2,624.7	0.00	0.00	0.00
8,700.0	90.77	269.77	7,437.3	-1,853.9	-2,461.1	2,723.5	0.00	0.00	0.00
8,800.0	90.77	269.77	7,435.9	-1,854.3	-2,561.1	2,822.3	0.00	0.00	0.00
8,900.0	90.77	269.77	7,434.6	-1,854.7	-2,661.1	2,921.1	0.00	0.00	0.00
9,000.0	90.77	269.77	7,433.2	-1,855.1	-2,761.1	3,019.9	0.00	0.00	0.00
9,100.0	90.77	269.77	7,431.9	-1,855.5	-2,861.1	3,118.7	0.00	0.00	0.00
9,200.0	90.77	269.77	7,430.5	-1,855.9	-2,961.1	3,217.5	0.00	0.00	0.00
9,300.0	90.77	269.77	7,429.2	-1,856.3	-3,061.1	3,316.3	0.00	0.00	0.00
9,400.0	90.77	269.77	7,427.8	-1,856.7	-3,161.1	3,415.1	0.00	0.00	0.00
9,500.0	90.77	269.77	7,426.5	-1,857.1	-3,261.1	3,513.9	0.00	0.00	0.00
9,600.0	90.77	269.77	7,425.1	-1,857.5	-3,361.0	3,612.6	0.00	0.00	0.00
9,700.0	90.77	269.77	7,423.7	-1,857.9	-3,461.0	3,711.4	0.00	0.00	0.00
9,800.0	90.77	269.77	7,422.4	-1,858.3	-3,561.0	3,810.2	0.00	0.00	0.00
9,900.0	90.77	269.77	7,421.0	-1,858.7	-3,661.0	3,909.0	0.00	0.00	0.00
10,000.0	90.77	269.77	7,419.7	-1,859.1	-3,761.0	4,007.8	0.00	0.00	0.00
10,100.0	90.77	269.77	7,418.3	-1,859.5	-3,861.0	4,106.6	0.00	0.00	0.00
10,200.0	90.77	269.77	7,417.0	-1,860.0	-3,961.0	4,205.4	0.00	0.00	0.00
10,300.0	90.77	269.77	7,415.6	-1,860.4	-4,061.0	4,304.2	0.00	0.00	0.00

# Bayswater Exploration & Production LLC

## Planning Report

<b>Database:</b>	edm	<b>Local Co-ordinate Reference:</b>	Well BLEHM_11
<b>Company:</b>	Bayswater Exploration & Production, LLC	<b>TVD Reference:</b>	KB @ 5096.0usft (Original Well Elev)
<b>Project:</b>	DJ Basin	<b>MD Reference:</b>	KB @ 5096.0usft (Original Well Elev)
<b>Site:</b>	Blehm Pad	<b>North Reference:</b>	True
<b>Well:</b>	BLEHM_11	<b>Survey Calculation Method:</b>	Minimum Curvature
<b>Wellbore:</b>	Wellbore #1		
<b>Design:</b>	Design #1		

Planned Survey										
Measured Depth (usft)	Inclination (°)	Azimuth (°)	Vertical Depth (usft)	+N/-S (usft)	+E/-W (usft)	Vertical Section (usft)	Dogleg Rate (°/100usft)	Build Rate (°/100usft)	Turn Rate (°/100usft)	
10,400.0	90.77	269.77	7,414.3	-1,860.8	-4,161.0	4,403.0	0.00	0.00	0.00	
10,500.0	90.77	269.77	7,412.9	-1,861.2	-4,261.0	4,501.8	0.00	0.00	0.00	
10,600.0	90.77	269.77	7,411.6	-1,861.6	-4,360.9	4,600.6	0.00	0.00	0.00	
10,700.0	90.77	269.77	7,410.2	-1,862.0	-4,460.9	4,699.4	0.00	0.00	0.00	
10,800.0	90.77	269.77	7,408.9	-1,862.4	-4,560.9	4,798.2	0.00	0.00	0.00	
10,900.0	90.77	269.77	7,407.5	-1,862.8	-4,660.9	4,897.0	0.00	0.00	0.00	
11,000.0	90.77	269.77	7,406.2	-1,863.2	-4,760.9	4,995.8	0.00	0.00	0.00	
11,100.0	90.77	269.77	7,404.8	-1,863.6	-4,860.9	5,094.6	0.00	0.00	0.00	
11,200.0	90.77	269.77	7,403.5	-1,864.0	-4,960.9	5,193.4	0.00	0.00	0.00	
11,300.0	90.77	269.77	7,402.1	-1,864.4	-5,060.9	5,292.1	0.00	0.00	0.00	
11,400.0	90.77	269.77	7,400.8	-1,864.8	-5,160.9	5,390.9	0.00	0.00	0.00	
11,500.0	90.77	269.77	7,399.4	-1,865.2	-5,260.9	5,489.7	0.00	0.00	0.00	
11,600.0	90.77	269.77	7,398.1	-1,865.6	-5,360.8	5,588.5	0.00	0.00	0.00	
11,700.0	90.77	269.77	7,396.7	-1,866.0	-5,460.8	5,687.3	0.00	0.00	0.00	
11,800.0	90.77	269.77	7,395.4	-1,866.4	-5,560.8	5,786.1	0.00	0.00	0.00	
11,900.0	90.77	269.77	7,394.0	-1,866.8	-5,660.8	5,884.9	0.00	0.00	0.00	
12,000.0	90.77	269.77	7,392.7	-1,867.2	-5,760.8	5,983.7	0.00	0.00	0.00	
12,100.0	90.77	269.77	7,391.3	-1,867.6	-5,860.8	6,082.5	0.00	0.00	0.00	
12,200.0	90.77	269.77	7,390.0	-1,868.0	-5,960.8	6,181.3	0.00	0.00	0.00	
12,300.0	90.77	269.77	7,388.6	-1,868.4	-6,060.8	6,280.1	0.00	0.00	0.00	
12,400.0	90.77	269.77	7,387.3	-1,868.8	-6,160.8	6,378.9	0.00	0.00	0.00	
12,500.0	90.77	269.77	7,385.9	-1,869.2	-6,260.8	6,477.7	0.00	0.00	0.00	
12,600.0	90.77	269.77	7,384.6	-1,869.6	-6,360.7	6,576.5	0.00	0.00	0.00	
12,700.0	90.77	269.77	7,383.2	-1,870.0	-6,460.7	6,675.3	0.00	0.00	0.00	
12,800.0	90.77	269.77	7,381.9	-1,870.4	-6,560.7	6,774.1	0.00	0.00	0.00	
12,900.0	90.77	269.77	7,380.5	-1,870.8	-6,660.7	6,872.8	0.00	0.00	0.00	
13,000.0	90.77	269.77	7,379.1	-1,871.2	-6,760.7	6,971.6	0.00	0.00	0.00	
13,100.0	90.77	269.77	7,377.8	-1,871.7	-6,860.7	7,070.4	0.00	0.00	0.00	
13,200.0	90.77	269.77	7,376.4	-1,872.1	-6,960.7	7,169.2	0.00	0.00	0.00	
13,300.0	90.77	269.77	7,375.1	-1,872.5	-7,060.7	7,268.0	0.00	0.00	0.00	
13,400.0	90.77	269.77	7,373.7	-1,872.9	-7,160.7	7,366.8	0.00	0.00	0.00	
13,500.0	90.77	269.77	7,372.4	-1,873.3	-7,260.7	7,465.6	0.00	0.00	0.00	
13,600.0	90.77	269.77	7,371.0	-1,873.7	-7,360.6	7,564.4	0.00	0.00	0.00	
13,700.0	90.77	269.77	7,369.7	-1,874.1	-7,460.6	7,663.2	0.00	0.00	0.00	
13,800.0	90.77	269.77	7,368.3	-1,874.5	-7,560.6	7,762.0	0.00	0.00	0.00	
13,900.0	90.77	269.77	7,367.0	-1,874.9	-7,660.6	7,860.8	0.00	0.00	0.00	
14,000.0	90.77	269.77	7,365.6	-1,875.3	-7,760.6	7,959.6	0.00	0.00	0.00	
14,100.0	90.77	269.77	7,364.3	-1,875.7	-7,860.6	8,058.4	0.00	0.00	0.00	
14,200.0	90.77	269.77	7,362.9	-1,876.1	-7,960.6	8,157.2	0.00	0.00	0.00	
14,300.0	90.77	269.77	7,361.6	-1,876.5	-8,060.6	8,256.0	0.00	0.00	0.00	
14,400.0	90.77	269.77	7,360.2	-1,876.9	-8,160.6	8,354.8	0.00	0.00	0.00	
14,500.0	90.77	269.77	7,358.9	-1,877.3	-8,260.6	8,453.6	0.00	0.00	0.00	
14,600.0	90.77	269.77	7,357.5	-1,877.7	-8,360.6	8,552.3	0.00	0.00	0.00	
14,700.0	90.77	269.77	7,356.2	-1,878.1	-8,460.5	8,651.1	0.00	0.00	0.00	
14,800.0	90.77	269.77	7,354.8	-1,878.5	-8,560.5	8,749.9	0.00	0.00	0.00	
14,900.0	90.77	269.77	7,353.5	-1,878.9	-8,660.5	8,848.7	0.00	0.00	0.00	
15,000.0	90.77	269.77	7,352.1	-1,879.3	-8,760.5	8,947.5	0.00	0.00	0.00	
15,100.0	90.77	269.77	7,350.8	-1,879.7	-8,860.5	9,046.3	0.00	0.00	0.00	
15,200.0	90.77	269.77	7,349.4	-1,880.1	-8,960.5	9,145.1	0.00	0.00	0.00	
15,300.0	90.77	269.77	7,348.1	-1,880.5	-9,060.5	9,243.9	0.00	0.00	0.00	
15,400.0	90.77	269.77	7,346.7	-1,880.9	-9,160.5	9,342.7	0.00	0.00	0.00	
15,500.0	90.77	269.77	7,345.4	-1,881.3	-9,260.5	9,441.5	0.00	0.00	0.00	
15,600.0	90.77	269.77	7,344.0	-1,881.7	-9,360.5	9,540.3	0.00	0.00	0.00	
15,700.0	90.77	269.77	7,342.7	-1,882.1	-9,460.4	9,639.1	0.00	0.00	0.00	

# Bayswater Exploration & Production LLC

## Planning Report

<b>Database:</b>	edm	<b>Local Co-ordinate Reference:</b>	Well BLEHM_11
<b>Company:</b>	Bayswater Exploration & Production, LLC	<b>TVD Reference:</b>	KB @ 5096.0usft (Original Well Elev)
<b>Project:</b>	DJ Basin	<b>MD Reference:</b>	KB @ 5096.0usft (Original Well Elev)
<b>Site:</b>	Blehm Pad	<b>North Reference:</b>	True
<b>Well:</b>	BLEHM_11	<b>Survey Calculation Method:</b>	Minimum Curvature
<b>Wellbore:</b>	Wellbore #1		
<b>Design:</b>	Design #1		

Planned Survey										
Measured Depth (usft)	Inclination (°)	Azimuth (°)	Vertical Depth (usft)	+N/-S (usft)	+E/-W (usft)	Vertical Section (usft)	Dogleg Rate (°/100usft)	Build Rate (°/100usft)	Turn Rate (°/100usft)	
15,800.0	90.77	269.77	7,341.3	-1,882.5	-9,560.4	9,737.9	0.00	0.00	0.00	
15,900.0	90.77	269.77	7,340.0	-1,882.9	-9,660.4	9,836.7	0.00	0.00	0.00	
16,000.0	90.77	269.77	7,338.6	-1,883.3	-9,760.4	9,935.5	0.00	0.00	0.00	
16,100.0	90.77	269.77	7,337.3	-1,883.8	-9,860.4	10,034.3	0.00	0.00	0.00	
16,200.0	90.77	269.77	7,335.9	-1,884.2	-9,960.4	10,133.0	0.00	0.00	0.00	
16,300.0	90.77	269.77	7,334.6	-1,884.6	-10,060.4	10,231.8	0.00	0.00	0.00	
16,400.0	90.77	269.77	7,333.2	-1,885.0	-10,160.4	10,330.6	0.00	0.00	0.00	
16,500.0	90.77	269.77	7,331.8	-1,885.4	-10,260.4	10,429.4	0.00	0.00	0.00	
16,600.0	90.77	269.77	7,330.5	-1,885.8	-10,360.4	10,528.2	0.00	0.00	0.00	
16,700.0	90.77	269.77	7,329.1	-1,886.2	-10,460.3	10,627.0	0.00	0.00	0.00	
16,800.0	90.77	269.77	7,327.8	-1,886.6	-10,560.3	10,725.8	0.00	0.00	0.00	
16,900.0	90.77	269.77	7,326.4	-1,887.0	-10,660.3	10,824.6	0.00	0.00	0.00	
17,000.0	90.77	269.77	7,325.1	-1,887.4	-10,760.3	10,923.4	0.00	0.00	0.00	
17,100.0	90.77	269.77	7,323.7	-1,887.8	-10,860.3	11,022.2	0.00	0.00	0.00	
17,200.0	90.77	269.77	7,322.4	-1,888.2	-10,960.3	11,121.0	0.00	0.00	0.00	
17,300.0	90.77	269.77	7,321.0	-1,888.6	-11,060.3	11,219.8	0.00	0.00	0.00	
17,400.0	90.77	269.77	7,319.7	-1,889.0	-11,160.3	11,318.6	0.00	0.00	0.00	
17,500.0	90.77	269.77	7,318.3	-1,889.4	-11,260.3	11,417.4	0.00	0.00	0.00	
17,600.0	90.77	269.77	7,317.0	-1,889.8	-11,360.3	11,516.2	0.00	0.00	0.00	
17,700.0	90.77	269.77	7,315.6	-1,890.2	-11,460.2	11,615.0	0.00	0.00	0.00	
17,800.0	90.77	269.77	7,314.3	-1,890.6	-11,560.2	11,713.8	0.00	0.00	0.00	
17,900.0	90.77	269.77	7,312.9	-1,891.0	-11,660.2	11,812.5	0.00	0.00	0.00	
18,000.0	90.77	269.77	7,311.6	-1,891.4	-11,760.2	11,911.3	0.00	0.00	0.00	
18,042.5	90.77	269.77	7,311.0	-1,891.6	-11,802.7	11,953.3	0.00	0.00	0.00	
20" Casing										

Design Targets										
Target Name	Dip Angle (°)	Dip Dir. (°)	TVD (usft)	+N/-S (usft)	+E/-W (usft)	Northing (usft)	Easting (usft)	Latitude		Longitude
BLEHM_11 PBHL - hit/miss target - Shape - Point	0.00	0.00	7,311.0	-1,891.6	-11,802.7	1,450,776.46	3,175,530.31	40° 34' 8.630 N		104° 52' 5.419 W
BLEHM_11 LP - plan hits target center - Point	0.00	0.00	7,441.0	-1,852.8	-2,184.7	1,450,888.40	3,185,147.72	40° 34' 9.041 N		104° 50' 0.787 W

Casing Points						Casing Diameter (")	Hole Diameter (")
Measured Depth (usft)	Vertical Depth (usft)	Name					
18,042.5	7,311.0	20" Casing				20	24