



Pad Name: Blehm Pad  
Well Name: BLEHM\_10  
Ground Level: 5076.0  
SHL Latitude: 40° 34' 27.422 N  
SHL Longitude: 104° 49' 32.646 W

## SECTION DETAILS

Sec	MD	Inc	Azi	TVD	+N/-S	+E/-W	Dleg	TFace	Vsect	Target
1	0.0	0.00	0.00	0.0	0.0	0.0	0.00	0.00	0.0	
2	1500.0	0.00	0.00	1500.0	0.0	0.0	0.00	0.00	0.0	
3	2921.0	28.42	228.16	2863.4	-230.3	-257.2	2.00	228.16	283.5	
4	5935.7	28.42	228.16	5514.8	-1187.3	-1326.1	0.00	0.00	1461.9	
5	7356.6	0.00	269.77	6878.2	-1417.6	-1583.3	2.00	180.00	1745.5	
6	8270.3	91.37	269.77	7451.0	-1420.0	-2170.0	10.00	0.00	2328.0	BLEHM_10 LP
7	17889.8	91.37	269.77	7221.0	-1458.8	-11786.7	0.00	0.00	11876.6	BLEHM_10 PBHL

## DESIGN TARGET DETAILS

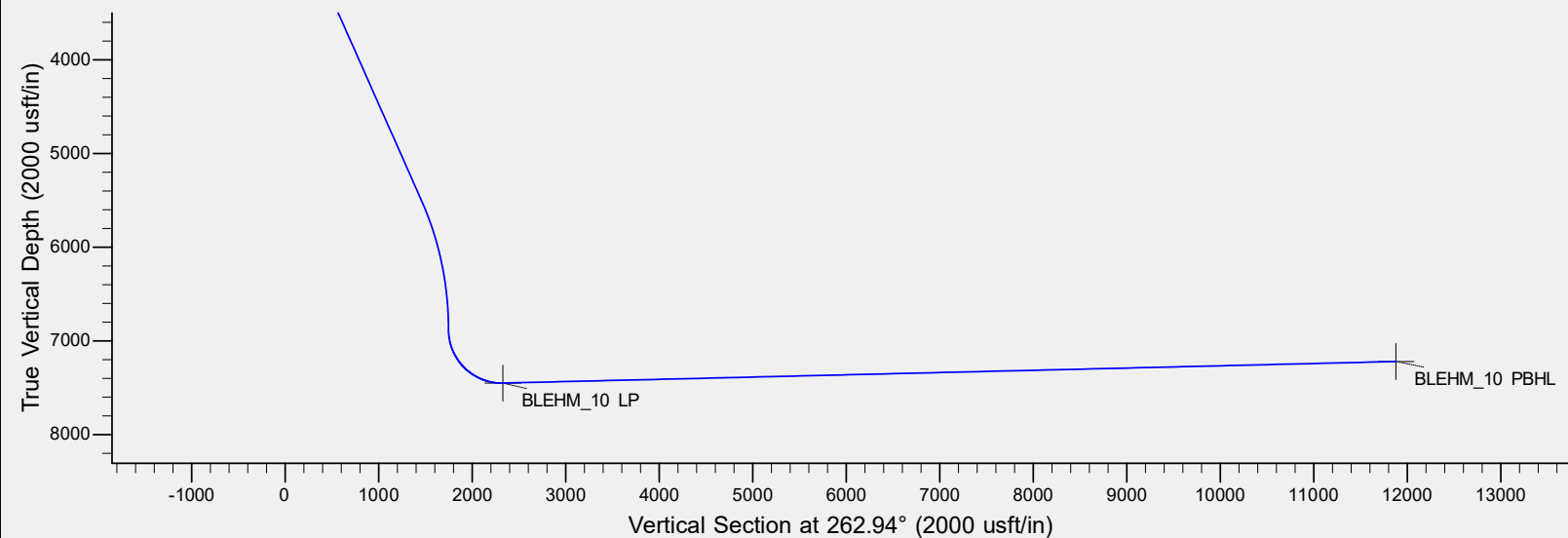
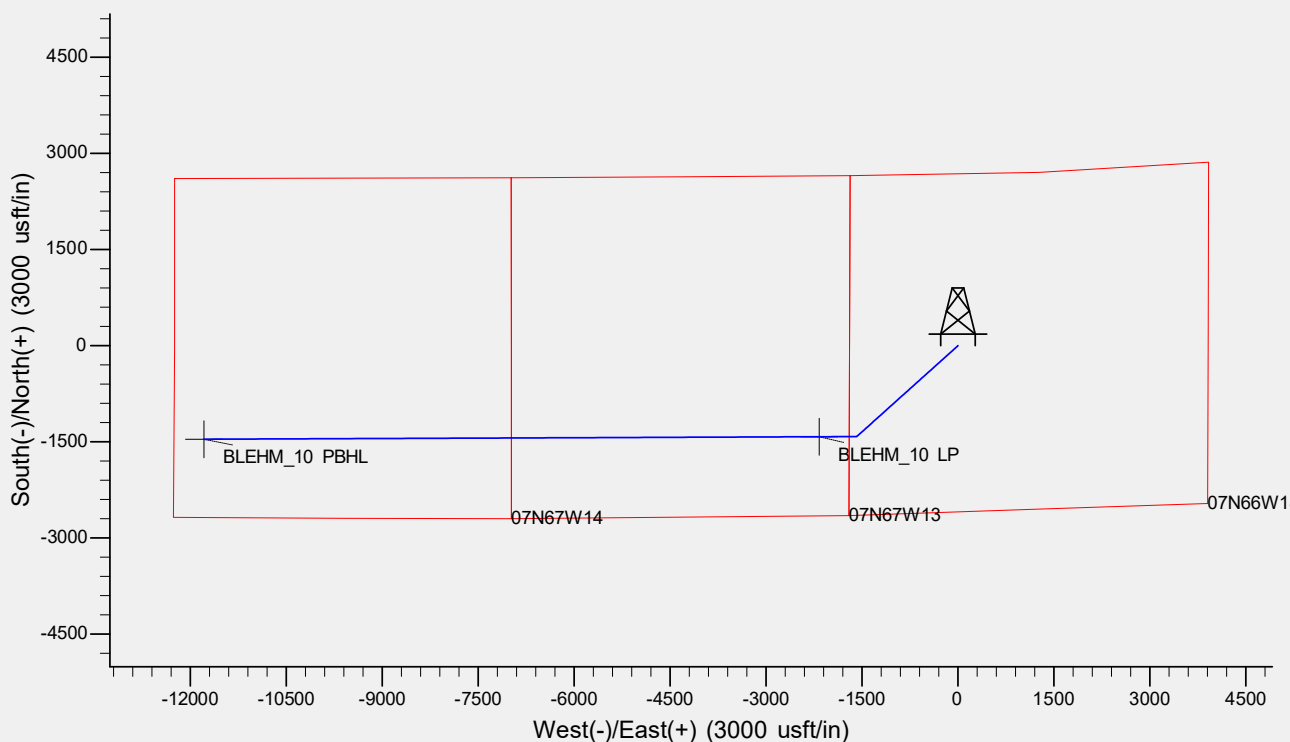
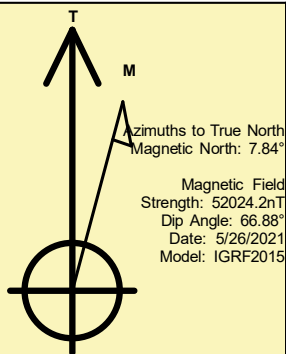
Name	TVD	+N/-S	+E/-W	Northing	Easting	Latitude	Longitude	Shape
BLEHM_10 LP	7451.0	-1420.0	-2170.0	1451328.48	3185146.08	40° 34' 13.390 N	104° 50' 0.766 W	Point
BLEHM_10 PBHL	- plan hits target center 7221.0	-1458.8	-11786.7	1451216.56	3175529.95	40° 34' 12.979 N	104° 52' 5.383 W	Point
	- plan hits target center							

## REFERENCE INFORMATION

Co-ordinate (N/E) Reference: Well BLEHM\_10, True North  
Vertical (TVD) Reference: KB @ 5096.0usft (Original Well Elev)  
Section (VS) Reference: Slot - (0.0N, 0.0E)  
Measured Depth Reference: KB @ 5096.0usft (Original Well Elev)  
Calculation Method: Minimum Curvature

## CASING DETAILS

No casing data is available



# **Bayswater Exploration & Production, LLC**

**DJ Basin**

**Blehm Pad**

**BLEHM\_10**

**Wellbore #1**

**Plan: Design #1**

## **Standard Planning Report**

**28 May, 2021**

# Bayswater Exploration & Production LLC

## Planning Report

<b>Database:</b>	edm	<b>Local Co-ordinate Reference:</b>	Well BLEHM_10
<b>Company:</b>	Bayswater Exploration & Production, LLC	<b>TVD Reference:</b>	KB @ 5096.0usft (Original Well Elev)
<b>Project:</b>	DJ Basin	<b>MD Reference:</b>	KB @ 5096.0usft (Original Well Elev)
<b>Site:</b>	Blehm Pad	<b>North Reference:</b>	True
<b>Well:</b>	BLEHM_10	<b>Survey Calculation Method:</b>	Minimum Curvature
<b>Wellbore:</b>	Wellbore #1		
<b>Design:</b>	Design #1		

<b>Project</b>	DJ Basin, DJ Basin		
<b>Map System:</b>	US State Plane 1983	<b>System Datum:</b>	Mean Sea Level
<b>Geo Datum:</b>	North American Datum 1983		
<b>Map Zone:</b>	Colorado Northern Zone		

Site		Blehm Pad			
Site Position:		Northing:	1,453,063.27 usft	Latitude:	40° 34' 30.382 N
From:	Lat/Long	Easting:	3,187,154.31 usft	Longitude:	104° 49' 34.572 W
Position Uncertainty:	0.0 usft	Slot Radius:	13-3/16 "	Grid Convergence:	0.44 °

Well	BLEHM_10					
Well Position	+N/-S	-299.5 usft	Northing:	1,452,764.93 usft	Latitude:	40° 34' 27.422 N
	+E/-W	148.6 usft	Easting:	3,187,305.20 usft	Longitude:	104° 49' 32.646 W
Position Uncertainty		0.0 usft	Wellhead Elevation:		Ground Level:	5,076.0 usft

<b>Wellbore</b>	Wellbore #1				
<b>Magnetics</b>	<b>Model Name</b>	<b>Sample Date</b>	<b>Declination (°)</b>	<b>Dip Angle (°)</b>	<b>Field Strength (nT)</b>
	IGRF2015	5/26/2021	7.84	66.88	52,024.18093290

Design	Design #1			
Audit Notes:				
Version:	Phase:	PLAN	Tie On Depth:	0.0
Vertical Section:	Depth From (TVD) (usft)	+N/-S (usft)	+E/-W (usft)	Direction (°)
	0.0	0.0	0.0	262.94

<b>Plan Survey Tool Program</b>	<b>Date</b>	5/26/2021			
<b>Depth From (usft)</b>	<b>Depth To (usft)</b>	<b>Survey (Wellbore)</b>	<b>Tool Name</b>	<b>Remarks</b>	
1	0.0	17,889.8	Design #1 (Wellbore #1)	MWD	
				OWSG MWD - Standard	

<b>Plan Sections</b>										
<b>Measured Depth (usft)</b>	<b>Inclination (°)</b>	<b>Azimuth (°)</b>	<b>Vertical Depth (usft)</b>	<b>+N/-S (usft)</b>	<b>+E/-W (usft)</b>	<b>Dogleg Rate (°/100usft)</b>	<b>Build Rate (°/100usft)</b>	<b>Turn Rate (°/100usft)</b>	<b>TFO (°)</b>	<b>Target</b>
0.0	0.00	0.00	0.0	0.0	0.0	0.00	0.00	0.00	0.00	
1,500.0	0.00	0.00	1,500.0	0.0	0.0	0.00	0.00	0.00	0.00	
2,921.0	28.42	228.16	2,863.4	-230.3	-257.2	2.00	2.00	0.00	228.16	
5,935.7	28.42	228.16	5,514.8	-1,187.3	-1,326.1	0.00	0.00	0.00	0.00	
7,356.6	0.00	269.77	6,878.2	-1,417.6	-1,583.3	2.00	-2.00	0.00	180.00	
8,270.3	91.37	269.77	7,451.0	-1,420.0	-2,170.0	10.00	10.00	0.00	0.00	BLEHM_10 LP
17,889.8	91.37	269.77	7,221.0	-1,458.8	-11,786.7	0.00	0.00	0.00	0.00	BLEHM_10 PBHL

# Bayswater Exploration & Production LLC

## Planning Report

<b>Database:</b>	edm	<b>Local Co-ordinate Reference:</b>	Well BLEHM_10
<b>Company:</b>	Bayswater Exploration & Production, LLC	<b>TVD Reference:</b>	KB @ 5096.0usft (Original Well Elev)
<b>Project:</b>	DJ Basin	<b>MD Reference:</b>	KB @ 5096.0usft (Original Well Elev)
<b>Site:</b>	Blehm Pad	<b>North Reference:</b>	True
<b>Well:</b>	BLEHM_10	<b>Survey Calculation Method:</b>	Minimum Curvature
<b>Wellbore:</b>	Wellbore #1		
<b>Design:</b>	Design #1		

Planned Survey									
Measured Depth (usft)	Inclination (°)	Azimuth (°)	Vertical Depth (usft)	+N/-S (usft)	+E/-W (usft)	Vertical Section (usft)	Dogleg Rate (°/100usft)	Build Rate (°/100usft)	Turn Rate (°/100usft)
0.0	0.00	0.00	0.0	0.0	0.0	0.0	0.00	0.00	0.00
100.0	0.00	0.00	100.0	0.0	0.0	0.0	0.00	0.00	0.00
200.0	0.00	0.00	200.0	0.0	0.0	0.0	0.00	0.00	0.00
300.0	0.00	0.00	300.0	0.0	0.0	0.0	0.00	0.00	0.00
400.0	0.00	0.00	400.0	0.0	0.0	0.0	0.00	0.00	0.00
500.0	0.00	0.00	500.0	0.0	0.0	0.0	0.00	0.00	0.00
600.0	0.00	0.00	600.0	0.0	0.0	0.0	0.00	0.00	0.00
700.0	0.00	0.00	700.0	0.0	0.0	0.0	0.00	0.00	0.00
800.0	0.00	0.00	800.0	0.0	0.0	0.0	0.00	0.00	0.00
900.0	0.00	0.00	900.0	0.0	0.0	0.0	0.00	0.00	0.00
1,000.0	0.00	0.00	1,000.0	0.0	0.0	0.0	0.00	0.00	0.00
1,100.0	0.00	0.00	1,100.0	0.0	0.0	0.0	0.00	0.00	0.00
1,200.0	0.00	0.00	1,200.0	0.0	0.0	0.0	0.00	0.00	0.00
1,300.0	0.00	0.00	1,300.0	0.0	0.0	0.0	0.00	0.00	0.00
1,400.0	0.00	0.00	1,400.0	0.0	0.0	0.0	0.00	0.00	0.00
1,500.0	0.00	0.00	1,500.0	0.0	0.0	0.0	0.00	0.00	0.00
1,600.0	2.00	228.16	1,600.0	-1.2	-1.3	1.4	2.00	2.00	0.00
1,700.0	4.00	228.16	1,699.8	-4.7	-5.2	5.7	2.00	2.00	0.00
1,800.0	6.00	228.16	1,799.5	-10.5	-11.7	12.9	2.00	2.00	0.00
1,900.0	8.00	228.16	1,898.7	-18.6	-20.8	22.9	2.00	2.00	0.00
2,000.0	10.00	228.16	1,997.5	-29.0	-32.4	35.7	2.00	2.00	0.00
2,100.0	12.00	228.16	2,095.6	-41.8	-46.6	51.4	2.00	2.00	0.00
2,200.0	14.00	228.16	2,193.1	-56.8	-63.4	69.9	2.00	2.00	0.00
2,300.0	16.00	228.16	2,289.6	-74.0	-82.7	91.1	2.00	2.00	0.00
2,400.0	18.00	228.16	2,385.3	-93.5	-104.5	115.2	2.00	2.00	0.00
2,500.0	20.00	228.16	2,479.8	-115.2	-128.7	141.9	2.00	2.00	0.00
2,600.0	22.00	228.16	2,573.2	-139.1	-155.4	171.3	2.00	2.00	0.00
2,700.0	24.00	228.16	2,665.2	-165.2	-184.5	203.4	2.00	2.00	0.00
2,800.0	26.00	228.16	2,755.8	-193.4	-216.0	238.1	2.00	2.00	0.00
2,900.0	28.00	228.16	2,844.9	-223.7	-249.8	275.4	2.00	2.00	0.00
2,921.0	28.42	228.16	2,863.4	-230.3	-257.2	283.5	2.00	2.00	0.00
3,000.0	28.42	228.16	2,932.9	-255.4	-285.2	314.4	0.00	0.00	0.00
3,100.0	28.42	228.16	3,020.9	-287.1	-320.7	353.5	0.00	0.00	0.00
3,200.0	28.42	228.16	3,108.8	-318.9	-356.1	392.6	0.00	0.00	0.00
3,300.0	28.42	228.16	3,196.8	-350.6	-391.6	431.7	0.00	0.00	0.00
3,400.0	28.42	228.16	3,284.7	-382.4	-427.1	470.8	0.00	0.00	0.00
3,500.0	28.42	228.16	3,372.7	-414.1	-462.5	509.9	0.00	0.00	0.00
3,600.0	28.42	228.16	3,460.6	-445.9	-498.0	549.0	0.00	0.00	0.00
3,700.0	28.42	228.16	3,548.6	-477.6	-533.4	588.1	0.00	0.00	0.00
3,800.0	28.42	228.16	3,636.5	-509.3	-568.9	627.1	0.00	0.00	0.00
3,900.0	28.42	228.16	3,724.5	-541.1	-604.3	666.2	0.00	0.00	0.00
4,000.0	28.42	228.16	3,812.4	-572.8	-639.8	705.3	0.00	0.00	0.00
4,100.0	28.42	228.16	3,900.4	-604.6	-675.3	744.4	0.00	0.00	0.00
4,200.0	28.42	228.16	3,988.3	-636.3	-710.7	783.5	0.00	0.00	0.00
4,300.0	28.42	228.16	4,076.3	-668.1	-746.2	822.6	0.00	0.00	0.00
4,400.0	28.42	228.16	4,164.2	-699.8	-781.6	861.7	0.00	0.00	0.00
4,500.0	28.42	228.16	4,252.2	-731.6	-817.1	900.8	0.00	0.00	0.00
4,600.0	28.42	228.16	4,340.1	-763.3	-852.5	939.8	0.00	0.00	0.00
4,700.0	28.42	228.16	4,428.1	-795.1	-888.0	978.9	0.00	0.00	0.00
4,800.0	28.42	228.16	4,516.0	-826.8	-923.5	1,018.0	0.00	0.00	0.00
4,900.0	28.42	228.16	4,604.0	-858.6	-958.9	1,057.1	0.00	0.00	0.00
5,000.0	28.42	228.16	4,691.9	-890.3	-994.4	1,096.2	0.00	0.00	0.00
5,100.0	28.42	228.16	4,779.9	-922.0	-1,029.8	1,135.3	0.00	0.00	0.00
5,200.0	28.42	228.16	4,867.8	-953.8	-1,065.3	1,174.4	0.00	0.00	0.00

# Bayswater Exploration & Production LLC

## Planning Report

<b>Database:</b>	edm	<b>Local Co-ordinate Reference:</b>	Well BLEHM_10
<b>Company:</b>	Bayswater Exploration & Production, LLC	<b>TVD Reference:</b>	KB @ 5096.0usft (Original Well Elev)
<b>Project:</b>	DJ Basin	<b>MD Reference:</b>	KB @ 5096.0usft (Original Well Elev)
<b>Site:</b>	Blehm Pad	<b>North Reference:</b>	True
<b>Well:</b>	BLEHM_10	<b>Survey Calculation Method:</b>	Minimum Curvature
<b>Wellbore:</b>	Wellbore #1		
<b>Design:</b>	Design #1		

Planned Survey										
Measured Depth (usft)	Inclination (°)	Azimuth (°)	Vertical Depth (usft)	+N/-S (usft)	+E/-W (usft)	Vertical Section (usft)	Dogleg Rate (°/100usft)	Build Rate (°/100usft)	Turn Rate (°/100usft)	
5,300.0	28.42	228.16	4,955.7	-985.5	-1,100.7	1,213.5	0.00	0.00	0.00	
5,400.0	28.42	228.16	5,043.7	-1,017.3	-1,136.2	1,252.5	0.00	0.00	0.00	
5,500.0	28.42	228.16	5,131.6	-1,049.0	-1,171.6	1,291.6	0.00	0.00	0.00	
5,600.0	28.42	228.16	5,219.6	-1,080.8	-1,207.1	1,330.7	0.00	0.00	0.00	
5,700.0	28.42	228.16	5,307.5	-1,112.5	-1,242.6	1,369.8	0.00	0.00	0.00	
5,800.0	28.42	228.16	5,395.5	-1,144.3	-1,278.0	1,408.9	0.00	0.00	0.00	
5,900.0	28.42	228.16	5,483.4	-1,176.0	-1,313.5	1,448.0	0.00	0.00	0.00	
5,935.7	28.42	228.16	5,514.8	-1,187.3	-1,326.1	1,461.9	0.00	0.00	0.00	
6,000.0	27.13	228.16	5,571.7	-1,207.3	-1,348.5	1,486.5	2.00	-2.00	0.00	
6,100.0	25.13	228.16	5,661.5	-1,236.7	-1,381.3	1,522.7	2.00	-2.00	0.00	
6,200.0	23.13	228.16	5,752.8	-1,264.0	-1,411.7	1,556.3	2.00	-2.00	0.00	
6,300.0	21.13	228.16	5,845.4	-1,289.1	-1,439.8	1,587.2	2.00	-2.00	0.00	
6,400.0	19.13	228.16	5,939.3	-1,312.1	-1,465.4	1,615.5	2.00	-2.00	0.00	
6,500.0	17.13	228.16	6,034.3	-1,332.8	-1,488.6	1,641.1	2.00	-2.00	0.00	
6,600.0	15.13	228.16	6,130.4	-1,351.4	-1,509.3	1,663.9	2.00	-2.00	0.00	
6,700.0	13.13	228.16	6,227.3	-1,367.6	-1,527.5	1,683.9	2.00	-2.00	0.00	
6,800.0	11.13	228.16	6,325.1	-1,381.7	-1,543.2	1,701.2	2.00	-2.00	0.00	
6,900.0	9.13	228.16	6,423.5	-1,393.4	-1,556.3	1,715.6	2.00	-2.00	0.00	
7,000.0	7.13	228.16	6,522.5	-1,402.8	-1,566.8	1,727.3	2.00	-2.00	0.00	
7,100.0	5.13	228.16	6,621.9	-1,410.0	-1,574.8	1,736.0	2.00	-2.00	0.00	
7,200.0	3.13	228.16	6,721.7	-1,414.8	-1,580.1	1,741.9	2.00	-2.00	0.00	
7,300.0	1.13	228.16	6,821.6	-1,417.2	-1,582.9	1,745.0	2.00	-2.00	0.00	
7,356.6	0.00	269.77	6,878.2	-1,417.6	-1,583.3	1,745.5	2.00	-2.00	0.00	
7,400.0	4.34	269.77	6,921.6	-1,417.6	-1,585.0	1,747.1	10.00	10.00	0.00	
7,500.0	14.34	269.77	7,020.1	-1,417.7	-1,601.2	1,763.2	10.00	10.00	0.00	
7,600.0	24.34	269.77	7,114.3	-1,417.8	-1,634.2	1,796.0	10.00	10.00	0.00	
7,700.0	34.34	269.77	7,201.4	-1,418.0	-1,683.2	1,844.6	10.00	10.00	0.00	
7,800.0	44.34	269.77	7,278.6	-1,418.3	-1,746.5	1,907.5	10.00	10.00	0.00	
7,900.0	54.34	269.77	7,343.7	-1,418.6	-1,822.3	1,982.7	10.00	10.00	0.00	
8,000.0	64.34	269.77	7,394.7	-1,418.9	-1,908.2	2,068.0	10.00	10.00	0.00	
8,100.0	74.34	269.77	7,429.9	-1,419.3	-2,001.6	2,160.8	10.00	10.00	0.00	
8,200.0	84.34	269.77	7,448.4	-1,419.7	-2,099.8	2,258.2	10.00	10.00	0.00	
8,270.3	91.37	269.77	7,451.0	-1,420.0	-2,170.0	2,328.0	10.00	10.00	0.00	
8,300.0	91.37	269.77	7,450.3	-1,420.1	-2,199.7	2,357.4	0.00	0.00	0.00	
8,400.0	91.37	269.77	7,447.9	-1,420.5	-2,299.6	2,456.7	0.00	0.00	0.00	
8,500.0	91.37	269.77	7,445.5	-1,420.9	-2,399.6	2,556.0	0.00	0.00	0.00	
8,600.0	91.37	269.77	7,443.1	-1,421.3	-2,499.6	2,655.2	0.00	0.00	0.00	
8,700.0	91.37	269.77	7,440.7	-1,421.7	-2,599.5	2,754.5	0.00	0.00	0.00	
8,800.0	91.37	269.77	7,438.3	-1,422.1	-2,699.5	2,853.7	0.00	0.00	0.00	
8,900.0	91.37	269.77	7,435.9	-1,422.5	-2,799.5	2,953.0	0.00	0.00	0.00	
9,000.0	91.37	269.77	7,433.6	-1,422.9	-2,899.5	3,052.3	0.00	0.00	0.00	
9,100.0	91.37	269.77	7,431.2	-1,423.3	-2,999.4	3,151.5	0.00	0.00	0.00	
9,200.0	91.37	269.77	7,428.8	-1,423.7	-3,099.4	3,250.8	0.00	0.00	0.00	
9,300.0	91.37	269.77	7,426.4	-1,424.1	-3,199.4	3,350.1	0.00	0.00	0.00	
9,400.0	91.37	269.77	7,424.0	-1,424.5	-3,299.3	3,449.3	0.00	0.00	0.00	
9,500.0	91.37	269.77	7,421.6	-1,424.9	-3,399.3	3,548.6	0.00	0.00	0.00	
9,600.0	91.37	269.77	7,419.2	-1,425.3	-3,499.3	3,647.9	0.00	0.00	0.00	
9,700.0	91.37	269.77	7,416.8	-1,425.8	-3,599.2	3,747.1	0.00	0.00	0.00	
9,800.0	91.37	269.77	7,414.4	-1,426.2	-3,699.2	3,846.4	0.00	0.00	0.00	
9,900.0	91.37	269.77	7,412.0	-1,426.6	-3,799.2	3,945.6	0.00	0.00	0.00	
10,000.0	91.37	269.77	7,409.6	-1,427.0	-3,899.2	4,044.9	0.00	0.00	0.00	
10,100.0	91.37	269.77	7,407.3	-1,427.4	-3,999.1	4,144.2	0.00	0.00	0.00	
10,200.0	91.37	269.77	7,404.9	-1,427.8	-4,099.1	4,243.4	0.00	0.00	0.00	
10,300.0	91.37	269.77	7,402.5	-1,428.2	-4,199.1	4,342.7	0.00	0.00	0.00	

# Bayswater Exploration & Production LLC

## Planning Report

<b>Database:</b>	edm	<b>Local Co-ordinate Reference:</b>	Well BLEHM_10
<b>Company:</b>	Bayswater Exploration & Production, LLC	<b>TVD Reference:</b>	KB @ 5096.0usft (Original Well Elev)
<b>Project:</b>	DJ Basin	<b>MD Reference:</b>	KB @ 5096.0usft (Original Well Elev)
<b>Site:</b>	Blehm Pad	<b>North Reference:</b>	True
<b>Well:</b>	BLEHM_10	<b>Survey Calculation Method:</b>	Minimum Curvature
<b>Wellbore:</b>	Wellbore #1		
<b>Design:</b>	Design #1		

Planned Survey									
Measured Depth (usft)	Inclination (°)	Azimuth (°)	Vertical Depth (usft)	+N/-S (usft)	+E/-W (usft)	Vertical Section (usft)	Dogleg Rate (°/100usft)	Build Rate (°/100usft)	Turn Rate (°/100usft)
10,400.0	91.37	269.77	7,400.1	-1,428.6	-4,299.0	4,442.0	0.00	0.00	0.00
10,500.0	91.37	269.77	7,397.7	-1,429.0	-4,399.0	4,541.2	0.00	0.00	0.00
10,600.0	91.37	269.77	7,395.3	-1,429.4	-4,499.0	4,640.5	0.00	0.00	0.00
10,700.0	91.37	269.77	7,392.9	-1,429.8	-4,599.0	4,739.7	0.00	0.00	0.00
10,800.0	91.37	269.77	7,390.5	-1,430.2	-4,698.9	4,839.0	0.00	0.00	0.00
10,900.0	91.37	269.77	7,388.1	-1,430.6	-4,798.9	4,938.3	0.00	0.00	0.00
11,000.0	91.37	269.77	7,385.7	-1,431.0	-4,898.9	5,037.5	0.00	0.00	0.00
11,100.0	91.37	269.77	7,383.3	-1,431.4	-4,998.8	5,136.8	0.00	0.00	0.00
11,200.0	91.37	269.77	7,381.0	-1,431.8	-5,098.8	5,236.1	0.00	0.00	0.00
11,300.0	91.37	269.77	7,378.6	-1,432.2	-5,198.8	5,335.3	0.00	0.00	0.00
11,400.0	91.37	269.77	7,376.2	-1,432.6	-5,298.7	5,434.6	0.00	0.00	0.00
11,500.0	91.37	269.77	7,373.8	-1,433.0	-5,398.7	5,533.9	0.00	0.00	0.00
11,600.0	91.37	269.77	7,371.4	-1,433.4	-5,498.7	5,633.1	0.00	0.00	0.00
11,700.0	91.37	269.77	7,369.0	-1,433.8	-5,598.7	5,732.4	0.00	0.00	0.00
11,800.0	91.37	269.77	7,366.6	-1,434.2	-5,698.6	5,831.6	0.00	0.00	0.00
11,900.0	91.37	269.77	7,364.2	-1,434.6	-5,798.6	5,930.9	0.00	0.00	0.00
12,000.0	91.37	269.77	7,361.8	-1,435.0	-5,898.6	6,030.2	0.00	0.00	0.00
12,100.0	91.37	269.77	7,359.4	-1,435.4	-5,998.5	6,129.4	0.00	0.00	0.00
12,200.0	91.37	269.77	7,357.0	-1,435.8	-6,098.5	6,228.7	0.00	0.00	0.00
12,300.0	91.37	269.77	7,354.7	-1,436.2	-6,198.5	6,328.0	0.00	0.00	0.00
12,400.0	91.37	269.77	7,352.3	-1,436.6	-6,298.5	6,427.2	0.00	0.00	0.00
12,500.0	91.37	269.77	7,349.9	-1,437.0	-6,398.4	6,526.5	0.00	0.00	0.00
12,600.0	91.37	269.77	7,347.5	-1,437.5	-6,498.4	6,625.7	0.00	0.00	0.00
12,700.0	91.37	269.77	7,345.1	-1,437.9	-6,598.4	6,725.0	0.00	0.00	0.00
12,800.0	91.37	269.77	7,342.7	-1,438.3	-6,698.3	6,824.3	0.00	0.00	0.00
12,900.0	91.37	269.77	7,340.3	-1,438.7	-6,798.3	6,923.5	0.00	0.00	0.00
13,000.0	91.37	269.77	7,337.9	-1,439.1	-6,898.3	7,022.8	0.00	0.00	0.00
13,100.0	91.37	269.77	7,335.5	-1,439.5	-6,998.2	7,122.1	0.00	0.00	0.00
13,200.0	91.37	269.77	7,333.1	-1,439.9	-7,098.2	7,221.3	0.00	0.00	0.00
13,300.0	91.37	269.77	7,330.7	-1,440.3	-7,198.2	7,320.6	0.00	0.00	0.00
13,400.0	91.37	269.77	7,328.4	-1,440.7	-7,298.2	7,419.9	0.00	0.00	0.00
13,500.0	91.37	269.77	7,326.0	-1,441.1	-7,398.1	7,519.1	0.00	0.00	0.00
13,600.0	91.37	269.77	7,323.6	-1,441.5	-7,498.1	7,618.4	0.00	0.00	0.00
13,700.0	91.37	269.77	7,321.2	-1,441.9	-7,598.1	7,717.6	0.00	0.00	0.00
13,800.0	91.37	269.77	7,318.8	-1,442.3	-7,698.0	7,816.9	0.00	0.00	0.00
13,900.0	91.37	269.77	7,316.4	-1,442.7	-7,798.0	7,916.2	0.00	0.00	0.00
14,000.0	91.37	269.77	7,314.0	-1,443.1	-7,898.0	8,015.4	0.00	0.00	0.00
14,100.0	91.37	269.77	7,311.6	-1,443.5	-7,998.0	8,114.7	0.00	0.00	0.00
14,200.0	91.37	269.77	7,309.2	-1,443.9	-8,097.9	8,214.0	0.00	0.00	0.00
14,300.0	91.37	269.77	7,306.8	-1,444.3	-8,197.9	8,313.2	0.00	0.00	0.00
14,400.0	91.37	269.77	7,304.4	-1,444.7	-8,297.9	8,412.5	0.00	0.00	0.00
14,500.0	91.37	269.77	7,302.0	-1,445.1	-8,397.8	8,511.7	0.00	0.00	0.00
14,600.0	91.37	269.77	7,299.7	-1,445.5	-8,497.8	8,611.0	0.00	0.00	0.00
14,700.0	91.37	269.77	7,297.3	-1,445.9	-8,597.8	8,710.3	0.00	0.00	0.00
14,800.0	91.37	269.77	7,294.9	-1,446.3	-8,697.7	8,809.5	0.00	0.00	0.00
14,900.0	91.37	269.77	7,292.5	-1,446.7	-8,797.7	8,908.8	0.00	0.00	0.00
15,000.0	91.37	269.77	7,290.1	-1,447.1	-8,897.7	9,008.1	0.00	0.00	0.00
15,100.0	91.37	269.77	7,287.7	-1,447.5	-8,997.7	9,107.3	0.00	0.00	0.00
15,200.0	91.37	269.77	7,285.3	-1,447.9	-9,097.6	9,206.6	0.00	0.00	0.00
15,300.0	91.37	269.77	7,282.9	-1,448.3	-9,197.6	9,305.9	0.00	0.00	0.00
15,400.0	91.37	269.77	7,280.5	-1,448.7	-9,297.6	9,405.1	0.00	0.00	0.00
15,500.0	91.37	269.77	7,278.1	-1,449.2	-9,397.5	9,504.4	0.00	0.00	0.00
15,600.0	91.37	269.77	7,275.7	-1,449.6	-9,497.5	9,603.6	0.00	0.00	0.00
15,700.0	91.37	269.77	7,273.4	-1,450.0	-9,597.5	9,702.9	0.00	0.00	0.00

# Bayswater Exploration & Production LLC

## Planning Report

<b>Database:</b>	edm	<b>Local Co-ordinate Reference:</b>	Well BLEHM_10
<b>Company:</b>	Bayswater Exploration & Production, LLC	<b>TVD Reference:</b>	KB @ 5096.0usft (Original Well Elev)
<b>Project:</b>	DJ Basin	<b>MD Reference:</b>	KB @ 5096.0usft (Original Well Elev)
<b>Site:</b>	Blehm Pad	<b>North Reference:</b>	True
<b>Well:</b>	BLEHM_10	<b>Survey Calculation Method:</b>	Minimum Curvature
<b>Wellbore:</b>	Wellbore #1		
<b>Design:</b>	Design #1		

Planned Survey										
Measured Depth (usft)	Inclination (°)	Azimuth (°)	Vertical Depth (usft)	+N/-S (usft)	+E/-W (usft)	Vertical Section (usft)	Dogleg Rate (°/100usft)	Build Rate (°/100usft)	Turn Rate (°/100usft)	
15,800.0	91.37	269.77	7,271.0	-1,450.4	-9,697.5	9,802.2	0.00	0.00	0.00	
15,900.0	91.37	269.77	7,268.6	-1,450.8	-9,797.4	9,901.4	0.00	0.00	0.00	
16,000.0	91.37	269.77	7,266.2	-1,451.2	-9,897.4	10,000.7	0.00	0.00	0.00	
16,100.0	91.37	269.77	7,263.8	-1,451.6	-9,997.4	10,100.0	0.00	0.00	0.00	
16,200.0	91.37	269.77	7,261.4	-1,452.0	-10,097.3	10,199.2	0.00	0.00	0.00	
16,300.0	91.37	269.77	7,259.0	-1,452.4	-10,197.3	10,298.5	0.00	0.00	0.00	
16,400.0	91.37	269.77	7,256.6	-1,452.8	-10,297.3	10,397.7	0.00	0.00	0.00	
16,500.0	91.37	269.77	7,254.2	-1,453.2	-10,397.2	10,497.0	0.00	0.00	0.00	
16,600.0	91.37	269.77	7,251.8	-1,453.6	-10,497.2	10,596.3	0.00	0.00	0.00	
16,700.0	91.37	269.77	7,249.4	-1,454.0	-10,597.2	10,695.5	0.00	0.00	0.00	
16,800.0	91.37	269.77	7,247.1	-1,454.4	-10,697.2	10,794.8	0.00	0.00	0.00	
16,900.0	91.37	269.77	7,244.7	-1,454.8	-10,797.1	10,894.1	0.00	0.00	0.00	
17,000.0	91.37	269.77	7,242.3	-1,455.2	-10,897.1	10,993.3	0.00	0.00	0.00	
17,100.0	91.37	269.77	7,239.9	-1,455.6	-10,997.1	11,092.6	0.00	0.00	0.00	
17,200.0	91.37	269.77	7,237.5	-1,456.0	-11,097.0	11,191.9	0.00	0.00	0.00	
17,300.0	91.37	269.77	7,235.1	-1,456.4	-11,197.0	11,291.1	0.00	0.00	0.00	
17,400.0	91.37	269.77	7,232.7	-1,456.8	-11,297.0	11,390.4	0.00	0.00	0.00	
17,500.0	91.37	269.77	7,230.3	-1,457.2	-11,397.0	11,489.6	0.00	0.00	0.00	
17,600.0	91.37	269.77	7,227.9	-1,457.6	-11,496.9	11,588.9	0.00	0.00	0.00	
17,700.0	91.37	269.77	7,225.5	-1,458.0	-11,596.9	11,688.2	0.00	0.00	0.00	
17,800.0	91.37	269.77	7,223.1	-1,458.4	-11,696.9	11,787.4	0.00	0.00	0.00	
17,889.8	91.37	269.77	7,221.0	-1,458.8	-11,786.7	11,876.6	0.00	0.00	0.00	
20" Casing										

Design Targets										
Target Name	Dip Angle (°)	Dip Dir. (°)	TVD (usft)	+N/-S (usft)	+E/-W (usft)	Northing (usft)	Easting (usft)	Latitude	Longitude	
- hit/miss target										
- Shape										
BLEHM_10 PBHL	0.00	0.00	7,221.0	-1,458.8	-11,786.7	1,451,216.56	3,175,529.95	40° 34' 12.979 N	104° 52' 5.383 W	
- plan hits target center										
- Point										
BLEHM_10 LP	0.00	0.00	7,451.0	-1,420.0	-2,170.0	1,451,328.49	3,185,146.08	40° 34' 13.390 N	104° 50' 0.766 W	
- plan hits target center										
- Point										

Casing Points					
Measured Depth (usft)	Vertical Depth (usft)	Name	Casing Diameter (")	Hole Diameter (")	
17,889.8	7,221.0	20" Casing	20	24	