



HighPoint Operating Corporation

RSU Anschutz Fed 4-61-05-0909CS

API # 05-123-50082

Intermediate

September 17, 2019

Quote #: QUO-36775-L2Q1P8

Execution #: EXC-21279-C9S3D002



HighPoint Operating Corporation

Attention: Mr. Matthew Schwartz | (303) 312-8142 | mschwartz@hpres.com

HighPoint Operating Corporation | 1099 18th St. | Denver, CO. 80202

Dear Mr. Matthew Schwartz,

Thank you for the opportunity to provide cementing services on this well. BJ Services strives to achieve complete customer satisfaction. If you have any questions regarding the services or data provided, please contact BJ Services at any time.

Sincerely,
Jason Creel
Field Engineer I | (307) 365-9038 | jason.creel@bjservices.com

Field Office 1716 East Allison Rd., Cheyenne WY, 82007
Phone: (307) 459-6487

Sales Office 999 18th St. Suite 1200 Denver, CO 80202
Phone: (281) 408-2361

BJ Cementing Treatment Report

SERVICE SUPERVISOR	Chad Johnson	RIG	Cade 23
DISTRICT	Cheyenne, WY	COUNTY	WELD
SERVICE	Cementing	STATE / PROVINCE	CO

WELL GEOMETRY

TYPE	ID (in)	OD (in)	WEIGHT (lb/ft)	MD (ft)	TVD (ft)	EXCESS (%)	GRADE
Previous Casing	8.92	9.63	36.00	839.00			
Casing	6.37	7.00	23.00	6,277.00			J-55
Open Hole	8.75	0.00	0.00			25.00	

HARDWARE

Bottom Plug Used?	No	Centralizers Type	Bow
Top Plug Used?	Yes	Landing Collar Depth (ft)	6,231
Top Plug Provided By	BJ	Max Casing Pressure - Rated (psi)	4368.00
Top Plug Size	7.000	Max Casing Pressure - Operated (psi)	4000.00
Centralizers Used	Yes	Top Connection Size	7
Centralizers Quantity	10.00		

CIRCULATION PRIOR TO JOB

Well Circulated By	Rig	PV Mud In	30
Circulation Prior to Job	Yes	PV Mud Out	36
Circulation Time (min)	120.00	Solids Present at End of Circulation	No
Circulation Rate (bpm)	7.00	10 sec SGS	2
Lost Circulation Prior to Cement Job	No	10 min SGS	6
Mud Density In (ppg)	9.80	Flare Prior to / during the Cement Job	No
Mud Density Out (ppg)	10.20	Gas Present	No

TEMPERATURE

Ambient Temperature (°F)	75.00	Slurry Cement Temperature (°F)	69.00
Mix Water Temperature (°F)	70.00		

Client: HighPoint Operating Corporation

Well: RSU ANSCHUTZ FED #4-61-05-0909CS

Well API: 05-123-50082

Start Date: 9/17/2019

End Date: 9/18/2019

Field Ticket #: FT-21279-C9S3D00201-1693133891



FLUID DETAILS

FLUID TYPE	FLUID NAME	DENSITY (ppg)	YIELD (Cu Ft/sk)	H ₂ O REQ (gals/sk)	PLN TOP FLD (ft)	LENGTH (ft)	VOL (sk)	VOL (Cu Ft)	VOL (bbls)
Spacer / Pre Flush / Flush	Fresh Water	8.3300			0.00				40.0000
Lead Slurry	BJCem I100.3.01C	12.5000	2.0726	11.83	0.00	5,788.00	520	1078.0000	191.9000
Tail Slurry	BJCem I100.6.01C	15.8000	1.1560	4.98	4,707.00	500.00	95	110.0000	19.6000
Displacement Final	Water	8.3300			0.00			0.0000	245.7000

FLUID TYPE	FLUID NAME	COMPONENT	CONCENTRATION	UOM
Lead Slurry	BJCem I100.3.01C	CEMENT, ASTM TYPE III	100.0000	PCT
Lead Slurry	BJCem I100.3.01C	FOAM PREVENTER, FP-25	0.3000	BWOB
Lead Slurry	BJCem I100.3.01C	FLUID LOSS, FL-24	0.3000	BWOB
Lead Slurry	BJCem I100.3.01C	BONDING AGENT, BA-60	0.3000	BWOB
Lead Slurry	BJCem I100.3.01C	RETARDER, SR-20	0.3000	BWOB
Tail Slurry	BJCem I100.6.01C	DISPERSANT, CD-31	0.2000	BWOB
Tail Slurry	BJCem I100.6.01C	RETARDER, R-6	0.2000	BWOB
Tail Slurry	BJCem I100.6.01C	BONDING AGENT, BA-60	0.2000	BWOB
Tail Slurry	BJCem I100.6.01C	FOAM PREVENTER, FP-25	0.3000	BWOB
Tail Slurry	BJCem I100.6.01C	FLUID LOSS, FL-24	0.2000	BWOB
Tail Slurry	BJCem I100.6.01C	CEMENT, CLASS G	100.0000	PCT

DISPLACEMENT AND END OF JOB SUMMARY

Displaced By	BJ	Amt of Cement Returned / Reversed	2.00
Calculated Displacement Vol (bbls)	246.00	Method Used to Verify Returns	Visual
Actual Displacement Vol (bbls)	246.00	Amt of Spacer to Surface	40.00
Did Float Hold?	Yes	Pressure Left on Casing (psi)	0.00
Bump Plug	Yes	Amt Bled Back After Job	1.00
Bump Plug Pressure (psi)	2000.00	Total Volume Pumped (bbls)	500.00
Were Returned Planned at Surface	No	Top Out Cement Spotted	No
		Lost Circulation During Cement Job	No

Client: HighPoint Operating Corporation

Well: RSU ANSCHUTZ FED #4-61-05-0909CS

Well API: 05-123-50082

Start Date: 9/17/2019

End Date: 9/18/2019

Field Ticket #: FT-21279-C9S3D00201-1693133891



BJ Cementing Event Log

Intermediate - Cheyenne, WY - Michael Lopez

SEQ	START DATE / TIME	EVENT	DENSITY (ppg)	PUMP RATE (bpm)	PUMP VOL (bbls)	PIPE PRESSURE (psi)	COMMENTS
1	09/17/2019 14:00	Callout					Called out -1400; bol - 2030
2	09/17/2019 15:00	Callout					Pre-trip equipment
3	09/17/2019 17:00	Callout					Steacs brief to leave yard
4	09/17/2019 17:10	Depart for Location					Leave yard
5	09/17/2019 19:00	Arrive on Location					Arrive at
6	09/17/2019 19:00	STEACS Briefing					Steacs brief to rig up
7	09/17/2019 20:00	Rig Up					Rig up to standards
8	09/17/2019 21:50	STEACS Briefing					Safety meeting with all personnel on location
9	09/17/2019 22:13	Prime Up		3.00	3.00	75.00	Three bbls Ahead
10	09/17/2019 22:15	Pressure Test					Pressure Test To 3000 psi
11	09/17/2019 22:17	Pump Spacer	8.3000	5.00	40.00	350.00	Fresh Water - 40 bbls
12	09/17/2019 22:26	Pump Lead Cement	12.5000	6.00	192.00	500.00	Lead - 12.5 ppg; 520 sks; 192 bbls; Yield - 2.0726 cuft/sk; Mix Water - 11.83 gal/sk
13	09/17/2019 22:57	Pump Tail Cement	15.8000	4.20	20.00	180.00	Tail - 15.8 ppg; 95 sks; 20 bbls; Yield - 1.1560 cuft/sk; Mix Water - 4.98 gal/sk
14	09/17/2019 23:02	Drop Top Plug					Shut down and drop top plug
15	09/17/2019 23:07	Pump Displacement					First 123 bbls Of Displacement - 7bpm; Last 123 bbls - 5 bpm
16	09/17/2019 23:07	Pump Displacement	8.3000	7.00	50.00	130.00	
17	09/17/2019 23:15	Pump Displacement	8.3000	7.00	100.00	700.00	
18	09/17/2019 23:24	Pump Displacement	8.3000	7.00	123.00	850.00	
19	09/17/2019 23:27	Pump Displacement	8.3000	5.00	170.00	1000.00	
20	09/17/2019 23:37	Pump Displacement	8.3000	5.00	220.00	1400.00	
21	09/17/2019 23:49	Pump Displacement	8.3000	2.00	246.00		
22	09/17/2019 23:50	Land Plug					Circulating Pressure -1500 psi; Bump Pressure - 2000 psi
23	09/17/2019 23:52	Check Floats					Floats Held; 1 bbl Back
24	09/18/2019 00:39	Other (See comment)					Casing Test - 30 mins; Got Back What We Pumped Back - 1 bbl

Client: HighPoint Operating Corporation

Well Name / API: RSU ANSCHUTZ FED #4-61-05-0909CS / 05-123-50082

Well MD: 6339



Quote #: QUO-36775-L2Q1P8

Plan #: ORD-21279-C9S3D0

Execution #: EXC-21279-C9S3D002

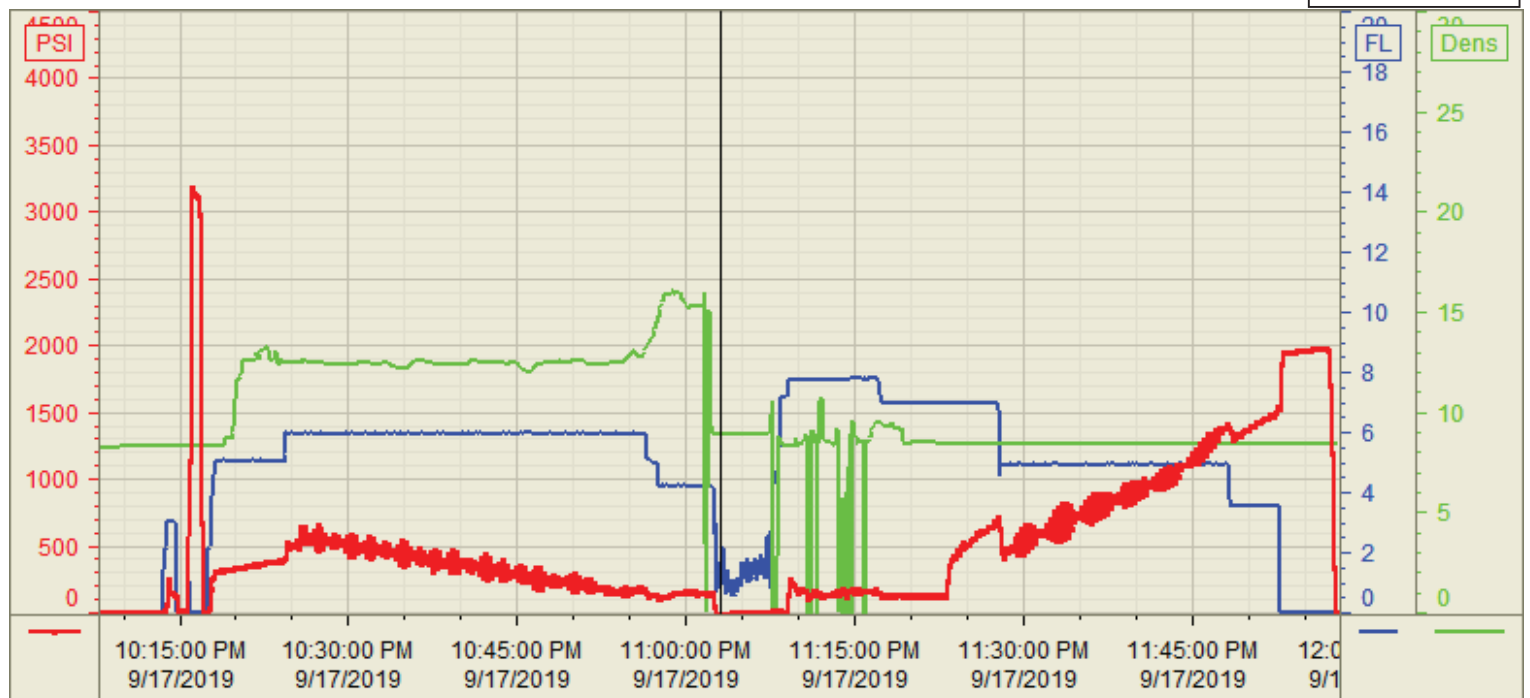
25	09/18/2019 01:12	Cement Back-to-Surface					Cement to Surface - 2 bbls
26	09/18/2019 01:12	STEACS Briefing					Steacs brief on rigging down
27	09/18/2019 01:20	Rig Down					Rig down
28	09/18/2019 02:20	STEACS Briefing					Steacs brief on journey management
29	09/18/2019 02:25	Leave Location					Leave location

Customer: HighPoint Operating
Well Number: 4-61-5-0909CS
Lease Info: RSU Anschutz Fed



Print Date/Time

9/18/2019 1:26:06 AM



	Name	Y value	X value/time stamp	Tag name Y
1	DS - Press (PSI)	-8.7 i.	9/17/2019 11:03:02 PM i.	Cementer\DS_DISCHARGE_PRESS_DIAL
2	Den - Density (PPG)	8.87	9/17/2019 11:03:01 PM	Cementer\DENSITY_ACTUAL_RATE
3	Pump Rate	0.93	9/17/2019 11:03:01 PM	Cementer\Flow_Combined
4				
5				

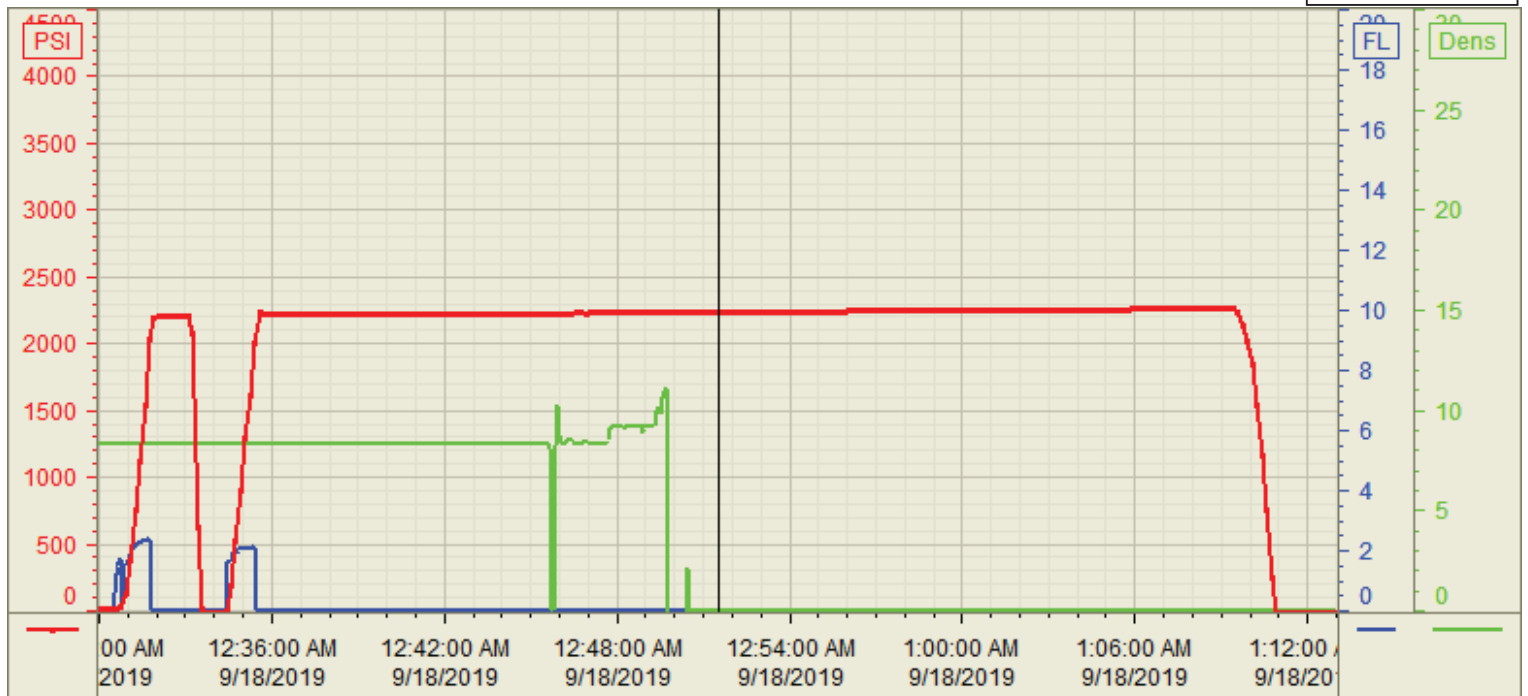
Source: Control1 1:26:05 AM

Customer: HighPoint
Well Number: 4-61-5-0909CS
Lease Info: RSU Anschutz Fed



Print Date/Time

9/18/2019 1:23:10 AM



	Name	Y value	X value/time stamp	Tag name Y
1	DS - Press (PSI)	2235.2 i.	9/18/2019 12:51:31 AM i.	Cementer\DS_DISCHARGE_PRESS_DIAL
2	Den - Density (PPG)	0.01 i.	9/18/2019 12:51:31 AM i.	Cementer\DENSITY_ACTUAL_RATE
3	Pump Rate	0.00 i.	9/18/2019 12:51:31 AM i.	Cementer\Flow_Combined
4				
5				

Source: Control1 1:23:11 AM