



HighPoint Operating Corporation

RSU Anschutz Fed 4-61-5-0808C

API # 05-123-50083

Intermediate

September 02, 2019

Quote #: QUO-36108-F7M0D4

Execution #: EXC-20891-Q1B0H302



HighPoint Operating Corporation

Attention: Mr. Matthew Schwartz | (303) 312-8142 | mschwartz@hpres.com

HighPoint Operating Corporation | 1099 18th St. | Denver, CO. 80202

Dear Mr. Matthew Schwartz,

Thank you for the opportunity to provide cementing services on this well. BJ Services strives to achieve complete customer satisfaction. If you have any questions regarding the services or data provided, please contact BJ Services at any time.

Sincerely,
Jason Creel
Field Engineer I | (307) 365-9038 | jason.creel@bjservices.com

Field Office 1716 East Allison Rd., Cheyenne WY, 82007
Phone: (307) 459-6487

Sales Office 999 18th St. Suite 1200 Denver, CO 80202
Phone: (281) 408-2361

BJ Cementing Treatment Report

SERVICE SUPERVISOR	Edgar Rodriguez	RIG	Cade 23
CLIENT FIELD REPRESENTATIVE	Dustin Davis	COUNTY	WELD
DISTRICT	Cheyenne, WY	STATE / PROVINCE	CO
SERVICE	Cementing		

WELL GEOMETRY

TYPE	ID (in)	OD (in)	WEIGHT (lb/ft)	MD (ft)	TVD (ft)	EXCESS (%)	GRADE
Open Hole	8.75	0.00	0.00			20.00	
Casing	6.37	7.00	23.00	6,388.00			J-55
Previous Casing	8.92	9.63	36.00	839.00			

HARDWARE

Bottom Plug Used?	No	Tool Type	Float Collar
Top Plug Used?	No	Tool Depth (ft)	6,346.00
Top Plug Provided By	Non BJ	Max Casing Pressure - Rated (psi)	7500.00
Top Plug Size	7.000	Max Casing Pressure - Operated (psi)	2200.00
Centralizers Used	No	Pipe Movement	None
Centralizers Quantity	14.00	Job Pumped Through	No Manifold
Centralizers Type	Rigid	Top Connection Thread	8RD
Landing Collar Depth (ft)	6,346	Top Connection Size	7

CIRCULATION PRIOR TO JOB

Well Circulated By	Rig	PV Mud Out	12
Circulation Prior to Job	Yes	YP Mud In	9
Circulation Time (min)	90.00	YP Mud Out	9
Circulation Rate (bpm)	5.00	Solids Present at End of Circulation	No
Circulation Volume (bbls)	800.00	10 sec SGS	6
Lost Circulation Prior to Cement Job	No	10 min SGS	4
Mud Density In (ppg)	10.00	30 min SGS	2
Mud Density Out (ppg)	10.00	Flare Prior to / during the Cement Job	No
PV Mud In	12	Gas Present	No

Client: HighPoint Operating Corporation

Well: RSU ANSCHUTZ FED #4-61-5-0808C

Well API: 05-123-50083

Start Date: 9/2/2019

End Date: 9/3/2019



TEMPERATURE

Ambient Temperature (°F)	65.00	Slurry Cement Temperature (°F)	65.00
Mix Water Temperature (°F)	65.00		

FLUID DETAILS

FLUID TYPE	FLUID NAME	DENSITY (ppg)	YIELD (Cu Ft/sk)	H ₂ O REQ (gals/sk)	PLN TOP FLD (ft)	LENGTH (ft)	VOL (sk)	VOL (Cu Ft)	VOL (bbls)
Spacer / Pre Flush / Flush	Fresh Water	8.3300			0.00				40.0000
Lead Slurry	BJCem I100.3.01C	12.5000	2.0726	11.83	0.00	5,387.00	465	964.0000	172.0000
Tail Slurry	BJCem I100.6.01C	15.8000	1.1560	4.98	5,387.00	1,000.00	165	191.0000	34.0000
Displacement Final	Water	8.3300			0.00			0.0000	249.0000

FLUID TYPE	FLUID NAME	COMPONENT	CONCENTRATION	UOM
Lead Slurry	BJCem I100.3.01C	FLUID LOSS, FL-24	0.3000	BWOB
Lead Slurry	BJCem I100.3.01C	CEMENT, ASTM TYPE III	100.0000	PCT
Lead Slurry	BJCem I100.3.01C	BONDING AGENT, BA-60	0.3000	BWOB
Lead Slurry	BJCem I100.3.01C	RETARDER, SR-20	0.3000	BWOB
Lead Slurry	BJCem I100.3.01C	FOAM PREVENTER, FP-25	0.3000	BWOB
Tail Slurry	BJCem I100.6.01C	FLUID LOSS, FL-24	0.2000	BWOB
Tail Slurry	BJCem I100.6.01C	FOAM PREVENTER, FP-25	0.3000	BWOB
Tail Slurry	BJCem I100.6.01C	BONDING AGENT, BA-60	0.2000	BWOB
Tail Slurry	BJCem I100.6.01C	DISPERSANT, CD-31	0.2000	BWOB
Tail Slurry	BJCem I100.6.01C	CEMENT, CLASS G	100.0000	PCT
Tail Slurry	BJCem I100.6.01C	RETARDER, R-6	0.2000	BWOB

DISPLACEMENT AND END OF JOB SUMMARY

Displaced By	BJ	Amt of Cement Returned / Reversed	2.00
Calculated Displacement Vol (bbls)	249.00	Method Used to Verify Returns	Visual
Actual Displacement Vol (bbls)	249.00	Amt of Spacer to Surface	40.00
Did Float Hold?	Yes	Pressure Left on Casing (psi)	0.00
Bump Plug	Yes	Amt Bled Back After Job	2.00
Bump Plug Pressure (psi)	2200.00	Total Volume Pumped (bbls)	495.00
Were Returns Planned at Surface	Yes	Top Out Cement Spotted	No
Cement Returns During Job	Full	Lost Circulation During Cement Job	No

Client: HighPoint Operating Corporation

Well: RSU ANSCHUTZ FED #4-61-5-0808C

Well API: 05-123-50083

Start Date: 9/2/2019

End Date: 9/3/2019



BJ Cementing Event Log

Intermediate - Cheyenne, WY - Edgar Rodriguez

SEQ	START DATE / TIME	EVENT	DENSITY (ppg)	PUMP RATE (bpm)	PUMP VOL (bbls)	PIPE PRESSURE (psi)	COMMENTS
1	09/02/2019 15:30	Callout					CALLED OUT TO BE ON LOCATION @21:00
2	09/02/2019 18:00	Depart for Location					CREW LEAVE FOR LOCATION
3	09/02/2019 20:45	Arrive on Location					ARRIVE ON LOCATION
4	09/02/2019 20:45	Other (See comment)					GET NUMBERS FROM CUSTOMER REP / CASING ON BOTTOM AND CIRCULATING
5	09/02/2019 20:50	STEACS Briefing					STEACS BRIEFING
6	09/02/2019 21:10	Spot Units					SPOT EQUIPMENT
7	09/02/2019 21:20	STEACS Briefing					STEACS BRIEFING
8	09/02/2019 21:30	Rig Up					RIG UP GROUND
9	09/02/2019 22:00	Rig Up					JOB STEACS BRIEFING
10	09/02/2019 22:14	Rig					RIG CIRCULATING
11	09/02/2019 22:34	Rig Up					SWITCH LINES TO PUMP
12	09/02/2019 22:39	Other (See comment)	8.3000	3.00	1.00	400.00	LOAD LINES
13	09/02/2019 22:41	Pressure Test	8.3000	1.00	1.00	4100.00	TEST LINES
14	09/02/2019 22:46	Pump Spacer	8.3000	6.00	40.00	400.00	PUMPING FRESH WATER / 1ST 10 WITH BLUE DYE
15	09/02/2019 22:50	Pump Lead Cement	12.5000	6.00	172.00	500.00	PUMPING 465 SKS LEAD TYPE III CEMENT / 12.5 LBS/GAL -- 2.0726 CUFT/SK -- 11.83 GAL/SK
16	09/02/2019 23:23	Pump Tail Cement	15.8000	6.00	34.00	250.00	PUMPING 165 SKS TAIL CLASS G CEMENT / 15.8 LBS/GAL -- 1.1560 CUFT/SK -- 4.98 GAL/SK / 5180' TOP OF CEMENT
17	09/02/2019 23:31	End Pumping					SHUTDOWN
18	09/02/2019 23:31	Drop Top Plug					DROP TOP PLUG
19	09/02/2019 23:38	Pump Displacement	8.3000	7.00		300.00	PUMPING DISPLACEMENT
20	09/02/2019 23:52	Other (See comment)	8.3000	7.00	92.00	560.00	DISPLACEMENT REACHED CEMENT
21	09/03/2019 00:08	Spacer Back-to-Surface	8.3000	7.00	207.00	1500.00	BLUE DYE WATER BACK TO SURFACE

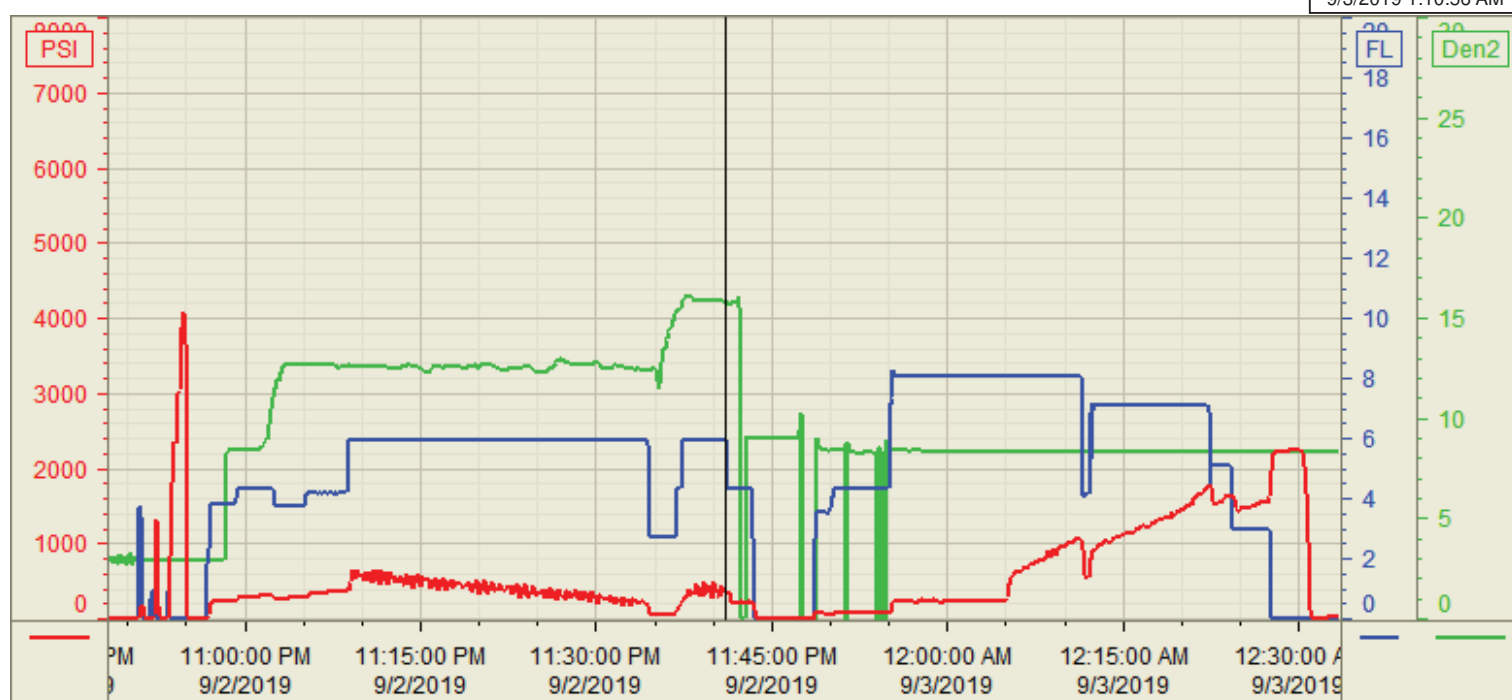
22	09/03/2019 00:10	Pump Displacement	8.3000	5.00	220.00	1800.00	SLOW RATE
23	09/03/2019 00:12	Pump Displacement	8.3000	3.00	233.00	1600.00	SLOW RATE TO BUMP PLUG
24	09/03/2019 00:15	Cement Back-to-Surface	8.3000	3.00	247.00	1700.00	CEMENT BACK TO SURFACE
25	09/03/2019 00:16	Land Plug	8.3000	3.00	249.00	2200.00	LANDED PLUG AT 1700 PSI AND TOOK UP TO 2200
26	09/03/2019 00:19	Check Floats					FLOATS HOLDING / 2 BBLS BACK
27	09/03/2019 00:22	Pressure Test				1570.00	30 MINUTE CASING TEST
28	09/03/2019 00:54	Pressure Test				1610.00	CASING TEST SUCCESSFUL / 1 BBLS BACK WHEN RELEASED
29	09/03/2019 00:55	End Pumping					END JOB / FULL CIRCULATION ENTIRE JOB / 2 BBLS CEMENT TO SURFACE
30	09/03/2019 01:00	STEACS Briefing					STEACS BRIEFING
31	09/03/2019 01:10	Rig Down					RIG DOWN
32	09/03/2019 01:35	Leave Location					CREW LEAVE LOCATION

Customer: HighPoint Operating
Well Number: RSU Anschutz Fed
Lease Info: 4-61-5-0808C



Print Date/Time

9/3/2019 1:10:56 AM



	Name	Y value	X value/time stamp	Tag name Y
1	DS - Press (PSI)	348.4	9/2/2019 11:40:57 PM	Cementar\DS_DISCHARGE_PRESS_DIAL
2	Combined pump rate	5.95 i.	9/2/2019 11:40:59 PM i.	Cementar\Flow_Combined
3	re circdensity	15.77	9/2/2019 11:40:57 PM	Cementar\DENSITY_ACTUAL_RATE
4				
5				

Source: Control1 1:10:56 AM