



HighPoint Operating Corporation

RSU Anschutz Fed 4-61-5-0808C

API # 05-123-50083

Production

September 07, 2019

Quote #: QUO-36163-Y5F5Y6

Execution #: EXC-20985-W8Y9V702



HighPoint Operating Corporation

Attention: Mr. Matthew Schwartz | (303) 312-8142 | mschwartz@hpres.com

HighPoint Operating Corporation | 1099 18th St. | Denver, CO. 80202

Dear Mr. Matthew Schwartz,

Thank you for the opportunity to provide cementing services on this well. BJ Services strives to achieve complete customer satisfaction. If you have any questions regarding the services or data provided, please contact BJ Services at any time.

Sincerely,
Jason Creel
Field Engineer I | (307) 365-9038 | jason.creel@bjservices.com

Field Office 1716 East Allison Rd., Cheyenne WY, 82007
Phone: (307) 459-6487

Sales Office 999 18th St. Suite 1200 Denver, CO 80202
Phone: (281) 408-2361

BJ Cementing Treatment Report

SERVICE SUPERVISOR	Edgar Rodriguez	RIG	Cade 23
CLIENT FIELD REPRESENTATIVE	Dustin Davis	COUNTY	WELD
DISTRICT	Cheyenne, WY	STATE / PROVINCE	CO
SERVICE	Cementing		

WELL GEOMETRY

TYPE	ID (in)	OD (in)	WEIGHT (lb/ft)	MD (ft)	TVD (ft)	EXCESS (%)	GRADE
Previous Casing	6.37	7.00	23.00	6,388.00	6,005.00		J-55
Open Hole	6.13	0.00	0.00	17,171.00	6,075.00	10.00	
Casing	4.00	4.50	11.60	17,163.00	6,076.00		P-110

HARDWARE

Bottom Plug Used?	No	Tool Type	Float Collar
Top Plug Used?	Yes	Tool Depth (ft)	17,148.00
Top Plug Provided By	Non BJ	Max Casing Pressure - Rated (psi)	7500.00
Top Plug Size	4.500	Max Casing Pressure - Operated (psi)	3000.00
Centralizers Used	No	Pipe Movement	None
Centralizers Quantity	135.00	Job Pumped Through	Manifold
Centralizers Type	Bow	Top Connection Thread	8RD
Landing Collar Depth (ft)	17,148	Top Connection Size	4.5

CIRCULATION PRIOR TO JOB

Well Circulated By	Rig	PV Mud Out	3
Circulation Prior to Job	Yes	YP Mud In	2
Circulation Time (min)	120.00	YP Mud Out	2
Circulation Rate (bpm)	10.00	Solids Present at End of Circulation	No
Circulation Volume (bbls)	1000.00	10 sec SGS	1
Lost Circulation Prior to Cement Job	No	10 min SGS	1
Mud Density In (ppg)	8.80	30 min SGS	1
Mud Density Out (ppg)	8.80	Flare Prior to / during the Cement Job	No
PV Mud In	3	Gas Present	No

Client: HighPoint Operating Corporation

Well: RSU ANSCHUTZ FED #4-61-5-0808C

Well API: 05-123-50083

Start Date: 9/7/2019

End Date: 9/7/2019



TEMPERATURE

Ambient Temperature (°F)	80.00
Mix Water Temperature (°F)	70.00

Slurry Cement Temperature (°F)	70.00
--------------------------------	-------

FLUID DETAILS

FLUID TYPE	FLUID NAME	DENSITY (ppg)	YIELD (Cu Ft/sk)	H ₂ O REQ (gals/sk)	PLN TOP FLD (ft)	LENGTH (ft)	VOL (sk)	VOL (Cu Ft)	VOL (bbls)
Spacer / Pre Flush / Flush	Fresh Water	8.3300			3,600.00				40.0000
Tail Slurry	BJCem P50.6.01C	13.5000	1.5930	7.95	5,630.00	11,518.00	754	1200.0000	213.6000
Displacement 1	Retarded Water	8.3300			15,848.00			0.0000	20.0000
Displacement Final	Water + Chems	8.3300			0.00			0.0000	246.3000

FLUID TYPE	FLUID NAME	COMPONENT	CONCENTRATION	UOM
Tail Slurry	BJCem P50.6.01C	CEMENT, CLASS G	50.0000	PCT
Tail Slurry	BJCem P50.6.01C	EXTENDER, BENTONITE	4.0000	BWOB
Tail Slurry	BJCem P50.6.01C	RETARDER, SR-20	0.2000	BWOB
Tail Slurry	BJCem P50.6.01C	BONDING AGENT, BA-90	3.0000	LBS/SK
Tail Slurry	BJCem P50.6.01C	IntegraCare EC-2	3.0000	BWOB
Tail Slurry	BJCem P50.6.01C	Flyash (Rockies)	50.0000	PCT
Tail Slurry	BJCem P50.6.01C	IntegraGuard GW-86	0.1000	BWOB
Tail Slurry	BJCem P50.6.01C	FOAM PREVENTER, FP-25	0.3000	BWOB
Tail Slurry	BJCem P50.6.01C	FLUID LOSS, FL-24	0.4000	BWOB
Displacement Final	Water + Chems	OXYGEN SCAVENGER, OS-30	0.1680	GPB
Displacement Final	Water + Chems	BIOCIDE, BIOC11139W	0.0210	GPB
Displacement Final	Water + Chems	CORROSION INHIBITORS, CI-27	0.2100	GPB

DISPLACEMENT AND END OF JOB SUMMARY

Displaced By	BJ	Amt of Cement Returned / Reversed	0.00
Calculated Displacement Vol (bbls)	266.00	Method Used to Verify Returns	Visual
Actual Displacement Vol (bbls)	266.00	Amt of Spacer to Surface	0.00
Did Float Hold?	Yes	Pressure Left on Casing (psi)	0.00
Bump Plug	Yes	Amt Bled Back After Job	0.50
Bump Plug Pressure (psi)	1900.00	Total Volume Pumped (bbls)	266.00
Were Returns Planned at Surface	Yes	Top Out Cement Spotted	No
Cement Returns During Job	None	Lost Circulation During Cement Job	No

Client: HighPoint Operating Corporation

Well: RSU ANSCHUTZ FED #4-61-5-0808C

Well API: 05-123-50083

Start Date: 9/7/2019

End Date: 9/7/2019



BJ Cementing Event Log

Long String - Cheyenne, WY - Edgar Rodriguez

SEQ	START DATE / TIME	EVENT	DENSITY (ppg)	PUMP RATE (bpm)	PUMP VOL (bbls)	PIPE PRESSURE (psi)	COMMENTS
1	09/07/2019 05:30	Callout					CALLED OUT TO BE ON LOCATION @11:00
2	09/07/2019 09:00	Depart for Location					CREW LEAVE FOR LOCATION
3	09/07/2019 10:30	Arrive on Location					ARRIVE ON LOCATION
4	09/07/2019 10:35	Other (See comment)					GET NUMBERS FROM CUSTOMER REP / RIG RUNNING CASING
5	09/07/2019 15:30	Rig					CASING ON BOTTOM / CIRCULATING / RIGGING CASING CREW DOWN
6	09/07/2019 16:00	STEACS Briefing					STEACS BRIEFING
7	09/07/2019 16:10	Spot Units					SPOT EQUIPMENT
8	09/07/2019 16:20	STEACS Briefing					STEACS BRIEFING
9	09/07/2019 16:30	Rig Up					RIG UP GROUND
10	09/07/2019 17:00	STEACS Briefing					JOB STEACS BRIEFING
11	09/07/2019 17:10	Rig Up					SWITCH LINES TO PUMP
12	09/07/2019 17:18	Other (See comment)	8.3000	3.00	3.00	950.00	LOAD LINES
13	09/07/2019 17:20	Pressure Test	8.3000	1.00	1.00	5400.00	TEST LINES
14	09/07/2019 17:22	Pump Spacer	8.3000	5.00	40.00	1400.00	PUMPING FRESH WATER SPACER
15	09/07/2019 17:34	Pumping Cement	13.5000	7.00	214.00	400.00	PUMPING 754 SKS 50/50 CLASS G CEMENT / 13.5 LBS/GAL -- 1.59 CUFT/SK -- 7.95 GAL/SK / 4713' TOP OF CEMENT
16	09/07/2019 18:13	End Pumping					SHUTDOWN
17	09/07/2019 18:13	Wash Pumps and Lines					WASH PUMPS AND LINES
18	09/07/2019 18:19	Drop Top Plug					DROP TOP PLUG
19	09/07/2019 18:23	Pump Displacement	8.3000	7.00		1800.00	PUMPING DISPLACEMENT WITH RETARDER
20	09/07/2019 18:25	Pump Displacement	8.3000	7.00	20.00	1800.00	PUMPING DISPLACEMENT WITH BIOCID, OXYGEN SCAVENGER, CORROSION INHIBITORS
21	09/07/2019 18:47	Pump Displacement	8.3000	6.50	155.00	2800.00	SLOW RATE

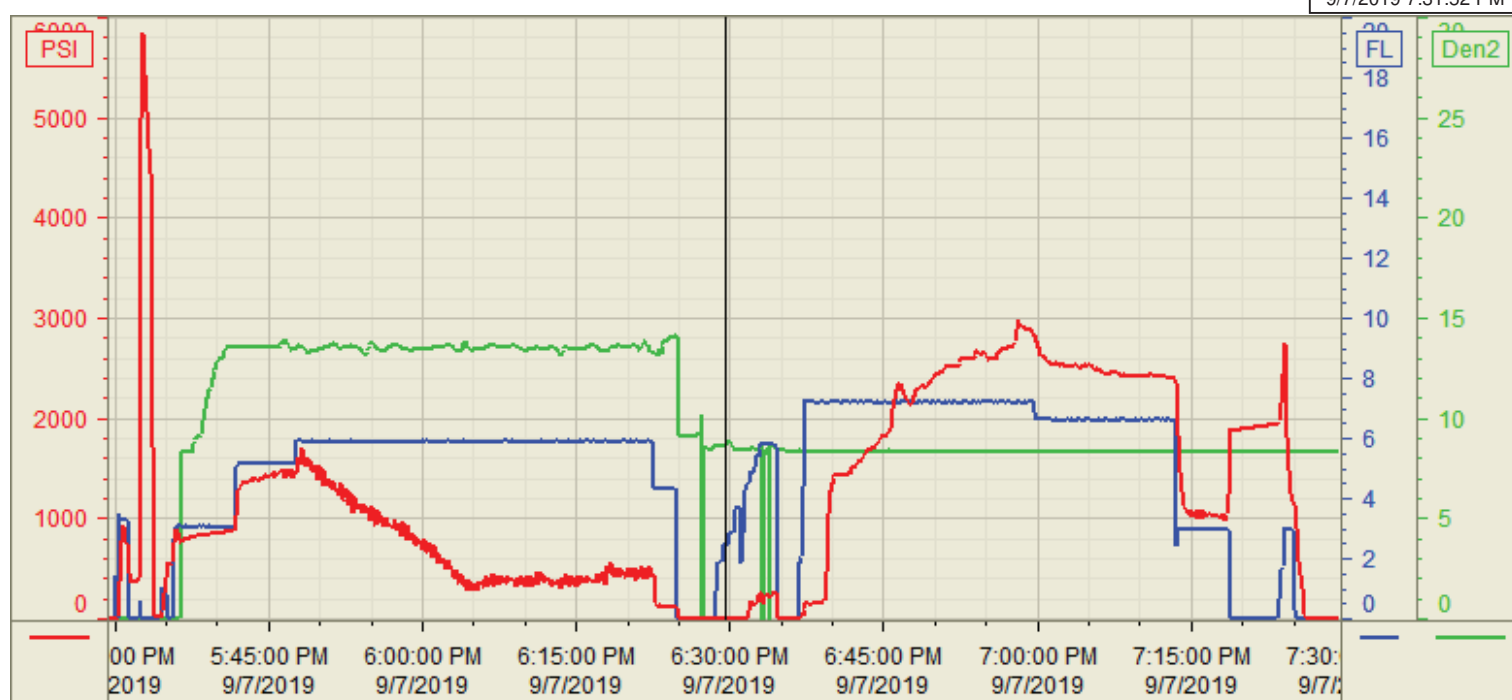
22	09/07/2019 19:02	Pump Displacement	8.3000	3.00	245.00	1400.00	SLOW RATE TO BUMP PLUG
23	09/07/2019 19:06	Land Plug	8.3000	3.00	266.00	1900.00	LANDED PLUG AT 1300 PSI AND TOOK UP TO 1900 PSI
24	09/07/2019 19:12	Pump Displacement	8.3000	4.00	2.50	1600.00	RUPTURE PLUG AT 3000 PSI AND STABILIZED AT 1600 PSI / PUMP 2.5 BBLS FOR WET SHOE
25	09/07/2019 19:13	End Pumping					SHUTDOWN
26	09/07/2019 19:14	Check Floats					FLOATS HOLDING / 0.5 BBL BACK
27	09/07/2019 19:15	End Pumping					END JOB / FULL CIRCULATION ENTIRE JOB
28	09/07/2019 19:15	STEACS Briefing					STEACS BRIEFING
29	09/07/2019 19:25	Rig Down					RIG DOWN
30	09/07/2019 19:50	Leave Location					CREW LEAVE LOCATION

Customer: HighPoint Operating
Well Number: 4-61-5-0808C
Lease Info: RSU Anschutz Fed



Print Date/Time

9/7/2019 7:31:52 PM



	Name	Y value	X value/time stamp	Tag name Y
1	DS - Press (PSI)	8.8 i.	9/7/2019 6:29:31 PM i.	CementerDS_DISCHARGE_PRESS_DIAL
2	Combined pump rate	2.47	9/7/2019 6:29:29 PM	CementerFlow_Combined
3	re circdensity	8.68 i.	9/7/2019 6:29:31 PM i.	CementerDENSITY_ACTUAL_RATE
4				
5				

Source: Control1 7:31:52 PM