



HighPoint Operating Corporation

RSU Anschutz Fed 4-61-5-2528C

API # 05-123-50080

Intermediate

October 3, 2019

Quote #: QUO-37286-P1R0S1

Execution #: EXC-21578-H4D6F502



HighPoint Operating Corporation

Attention: Mr. Matthew Schwartz | (303) 312-8142 | mschwartz@hpres.com

HighPoint Operating Corporation | 1099 18th St. | Denver, CO. 80202

Dear Mr. Matthew Schwartz,

Thank you for the opportunity to provide cementing services on this well. BJ Services strives to achieve complete customer satisfaction. If you have any questions regarding the services or data provided, please contact BJ Services at any time.

Sincerely,
Jason Creel
Field Engineer I | (307) 365-9038 | jason.creel@bjservices.com

Field Office 1716 East Allison Rd., Cheyenne WY, 82007
Phone: (307) 459-6487

Sales Office 999 18th St. Suite 1200 Denver, CO 80202
Phone: (281) 408-2361

BJ Cementing Treatment Report

SERVICE SUPERVISOR	William Silvester	RIG	Cade 23
DISTRICT	Cheyenne, WY	COUNTY	WELD
SERVICE	Cementing	STATE / PROVINCE	CO

WELL GEOMETRY

TYPE	ID (in)	OD (in)	WEIGHT (lb/ft)	MD (ft)	TVD (ft)	EXCESS (%)	GRADE
Casing	6.37	7.00	23.00	6,393.00	6,001.00		J-55
Previous Casing	8.92	9.63	36.00	840.00	840.00		
Open Hole	8.75	0.00	0.00	6,410.00	6,002.00	30.00	

HARDWARE

Bottom Plug Used?	No	Centralizers Type	Rigid
Top Plug Used?	Yes	Landing Collar Depth (ft)	6,348
Top Plug Provided By	Non BJ	Tool Type	Float Collar
Top Plug Size	7.000	Tool Depth (ft)	6,348.00
Centralizers Used	Yes	Pipe Movement	None
Centralizers Quantity	13.00	Job Pumped Through	Manifold

CIRCULATION PRIOR TO JOB

Well Circulated By	Rig	PV Mud Out	36
Circulation Prior to Job	Yes	YP Mud In	5
Circulation Time (min)	60.00	Solids Present at End of Circulation	No
Circulation Rate (bpm)	8.00	10 sec SGS	1
Circulation Volume (bbls)	338.00	10 min SGS	3
Lost Circulation Prior to Cement Job	No	30 min SGS	0
Mud Density In (ppg)	9.90	Flare Prior to / during the Cement Job	No
PV Mud In	32	Gas Present	No

TEMPERATURE

Ambient Temperature (°F)	40.00	Slurry Cement Temperature (°F)	68.00
Mix Water Temperature (°F)	68.00		

Client: HighPoint Operating Corporation

Well: RSU ANSCHUTZ FED #4-61-5-2528C

Well API: 05-123-50080

Start Date: 10/3/2019

End Date: 10/3/2019



FLUID DETAILS

FLUID TYPE	FLUID NAME	DENSITY (ppg)	YIELD (Cu Ft/sk)	H ₂ O REQ (gals/sk)	PLN TOP FLD (ft)	LENGTH (ft)	VOL (sk)	VOL (Cu Ft)	VOL (bbls)
Spacer / Pre Flush / Flush	Fresh Water	8.3300			0.00				40.0000
Lead Slurry	BJCem I100.3.01C	12.5000	2.0726	11.83	0.00	5,896.00	545	1129.0000	200.9000
Tail Slurry	BJCem I100.6.01C	15.8000	1.1560	4.98	5,727.00	500.00	95	110.0000	19.6000
Displacement Final	Water	8.3300			0.00			0.0000	250.0000

FLUID TYPE	FLUID NAME	COMPONENT	CONCENTRATION	UOM
Lead Slurry	BJCem I100.3.01C	BONDING AGENT, BA-60	0.3000	BWOB
Lead Slurry	BJCem I100.3.01C	FOAM PREVENTER, FP-25	0.3000	BWOB
Lead Slurry	BJCem I100.3.01C	RETARDER, SR-20	0.3000	BWOB
Lead Slurry	BJCem I100.3.01C	FLUID LOSS, FL-24	0.3000	BWOB
Lead Slurry	BJCem I100.3.01C	CEMENT, ASTM TYPE III	100.0000	PCT
Tail Slurry	BJCem I100.6.01C	FLUID LOSS, FL-24	0.2000	BWOB
Tail Slurry	BJCem I100.6.01C	CEMENT, CLASS G	100.0000	PCT
Tail Slurry	BJCem I100.6.01C	FOAM PREVENTER, FP-25	0.3000	BWOB
Tail Slurry	BJCem I100.6.01C	BONDING AGENT, BA-60	0.2000	BWOB
Tail Slurry	BJCem I100.6.01C	RETARDER, R-6	0.2000	BWOB
Tail Slurry	BJCem I100.6.01C	DISPERSANT, CD-31	0.2000	BWOB

DISPLACEMENT AND END OF JOB SUMMARY

Displaced By	BJ	Amt of Cement Returned / Reversed	15.00
Calculated Displacement Vol (bbls)	250.00	Method Used to Verify Returns	Visual
Actual Displacement Vol (bbls)	250.00	Amt of Spacer to Surface	40.00
Did Float Hold?	Yes	Pressure Left on Casing (psi)	0.00
Bump Plug	Yes	Amt Bled Back After Job	1.50
Bump Plug Pressure (psi)	2074.00	Total Volume Pumped (bbls)	511.00
Were Returns Planned at Surface	Yes	Top Out Cement Spotted	No
Cement Returns During Job	Full	Lost Circulation During Cement Job	No

BJ Cementing Event Log

Intermediate - Cheyenne, WY - William Silvester

SEQ	START DATE / TIME	EVENT	DENSITY (ppg)	PUMP RATE (bpm)	PUMP VOL (bbls)	PIPE PRESSURE (psi)	COMMENTS
1	10/02/2019 21:00	Callout					Arrive at yard Pre Trip Equipment Location Time Is 0200 am
2	10/02/2019 21:30	STEACS Briefing					Pre Convoy meeting to location / Driving at night Etc
3	10/02/2019 21:30	Depart for Location					Depart for Location/ Yammer Out
4	10/03/2019 00:00	Arrive on Location					Arrive on Location At 0000
5	10/03/2019 01:00	STEACS Briefing					Pre rig up steacs
6	10/03/2019 01:00	Rig Up					Rig up as Per Standard
7	10/03/2019 03:00	STEACS Briefing					Pre job steacs meeting
8	10/03/2019 03:24	Prime Up	8.3000	3.00	3.00	200.00	3 Bbls ahead
9	10/03/2019 03:26	Pressure Test					Pressure Test Lines To 3,000 psi
10	10/03/2019 03:30	Pump Spacer	8.3000	5.00	40.00	400.00	Pump Spacer with blue dye in first 10 bbls
11	10/03/2019 03:41	Pump Lead Cement	12.5000	6.00	201.00	600.00	Lead = 545 sks 2.0726 ft3/sk 11.83 gps =201 bbls
12	10/03/2019 04:14	Pump Tail Cement	15.8000	6.00	20.00	300.00	Tail = 95 sks 1.156 ft3/sk 4.98 gps = 19.5 bbls
13	10/03/2019 04:18	Drop Top Plug					Drop plug
14	10/03/2019 04:23	Pump Displacement	8.3000	8.00	50.00	400.00	Pump Displacement with Fresh Water
15	10/03/2019 04:40	Pump Displacement	8.3000	5.00	190.00	1200.00	Pump Displacement with Fresh Water
16	10/03/2019 05:02	Pump Displacement	8.3000	5.00	200.00	1300.00	Pump Displacement with Fresh Water
17	10/03/2019 05:04	Pump Displacement	8.3000	3.00	220.00		Pump Displacement with Fresh Water
18	10/03/2019 05:15	Land Plug	8.3000				Bump Plug To 1600 psi 2070 psi over Final Circulation Pressure
19	10/03/2019 05:17	Check Floats	8.3000				Bleed Pressure Check Floats 1.7 bbls back
20	10/03/2019 05:21	Other (See comment)				2074.00	30 min Casing Test at 2074 psi
21	10/03/2019 05:55	Cement Back-to-Surface			234.00		15.0bbls Cement to Surface
22	10/03/2019 05:55	STEACS Briefing					Rig Down STEACS Meeting
23	10/03/2019 05:55	Rig Down					Rig Down as Per Standard
24	10/03/2019 06:55	STEACS Briefing					Pre Convoy STEACS Briefing
25	10/03/2019 07:00	Leave Location					Leave Location

Client: HighPoint Operating Corporation

Well Name / API: RSU ANSCHUTZ FED #4-61-5-2528C / 05-123-50080

Well MD: 6410



Quote #: QUO-37286-P1R0S1

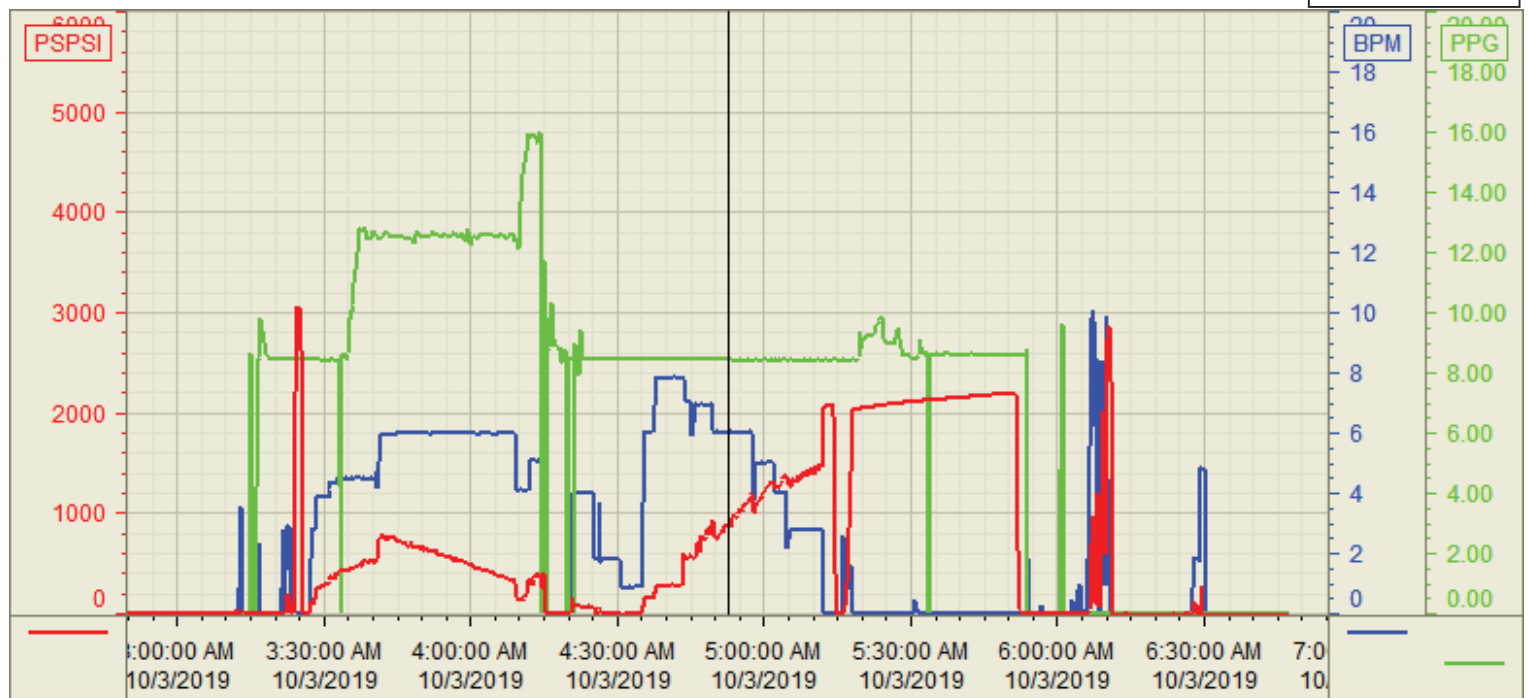
Plan #: ORD-21578-H4D6F5

Execution #: EXC-21578-H4D6F502

Customer: HighPoint
Well Number: 4-61-5-2528C
Lease Info: RSU Anschutz Fed



Print Date/Time
10/3/2019 6:47:34 AM



	Name	Y value	X value/time stamp	Tag name Y
1	PS - Press(PSI)	911.1	10/3/2019 4:52:39 AM	CementorPS_DISCHARGE_PRESS_DIAL
2	Recirc - Density (PPG)	8.42 i.	10/3/2019 4:52:36 AM i.	CementorDENSITY_ACTUAL_RATE
3	Combined rate (BPM)	6.02	10/3/2019 4:52:35 AM	CementorFlow_Combined
4				
5				

Source: Control1 6:47:30 AM