



HighPoint Operating Corporation

RSU Anschutz Fed 4-61-5-0909CN

API # 05-123-50078

Production

September 16, 2019

Quote #: QUO-36544-Y0S2P4

Execution #: EXC-21167-V4W3K002



HighPoint Operating Corporation

Attention: Mr. Matthew Schwartz | (303) 312-8142 | mschwartz@hpres.com

HighPoint Operating Corporation | 1099 18th St. | Denver, CO. 80202

Dear Mr. Matthew Schwartz,

Thank you for the opportunity to provide cementing services on this well. BJ Services strives to achieve complete customer satisfaction. If you have any questions regarding the services or data provided, please contact BJ Services at any time.

Sincerely,
Jason Creel
Field Engineer I | (307) 365-9038 | jason.creel@bjservices.com

Field Office 1716 East Allison Rd., Cheyenne WY, 82007
Phone: (307) 459-6487

Sales Office 999 18th St. Suite 1200 Denver, CO 80202
Phone: (281) 408-2361

BJ Cementing Treatment Report

SERVICE SUPERVISOR	Michael Lopez	RIG	Cade 23
DISTRICT	Cheyenne, WY	COUNTY	WELD
SERVICE	Cementing	STATE / PROVINCE	CO

WELL GEOMETRY

TYPE	ID (in)	OD (in)	WEIGHT (lbs/ft)	MD (ft)	TVD (ft)	EXCESS (%)	GRADE
Previous Casing	6.37	7.00	23.00	6,382.00			J-55
Open Hole	6.13			17,114.00		10.00	
Casing	4.00	4.50	11.60	17,109.00			P-110

HARDWARE

Bottom Plug Used?	No	Max Casing Pressure - Rated (psi)	7580
Top Plug Used?	Yes	Max Casing Pressure - Operated (psi)	758
Top Plug Provided By	Rig	Job Pumped Through	Swage
Top Plug Size	4.5	Top Connection Thread	LTC
Centralizers Used	No	Top Connection Size	4.5
Landing Collar Depth (ft)	17,092		

CIRCULATION PRIOR TO JOB

Well Circulated By	Rig	Lost Circulation Prior to Cement Job	No
Circulation Prior to Job	Yes	Solids Present at End of Circulation	No
Circulation Time (min)	60	Flare Prior to / during the Cement Job	No
Circulation Rate (bpm)	8	Gas Present	No

TEMPERATURE

Ambient Temperature (°F)	75	Slurry Cement Temperature (°F)	65
Mix Water Temperature (°F)	70		

FLUID DETAILS

FLUID TYPE	FLUID NAME	DENSITY (ppg)	YIELD (Cu Ft/sk)	H ₂ O REQ. (gals/sk)	PLN TOP FLD (ft)	LENGTH (ft)	VOL (sk)	VOL (Cu Ft)	VOL (bbls)
Spacer / Pre Flush / Flush	Fresh Water	8.3300			3,370.00				40.0000
Tail Slurry	BJCem P50.6.01C	13.5000	1.5930	7.95	5,400.00	11,712.00	770	1,227.0000	218.5000
Displacement 1	Retarded Water	8.3300			15,812.00			0.0000	20.0000
Displacement Final	Water + Chems	8.3300			0.00			0.0000	245.7000

FLUID TYPE	FLUID NAME	COMPONENT	CONCENTRATION	UOM
Tail Slurry	BJCem P50.6.01C	IntegraCare EC-2	3.0000	BWOB
Tail Slurry	BJCem P50.6.01C	Flyash (Rockies)	50.0000	PCT
Tail Slurry	BJCem P50.6.01C	FLUID LOSS, FL-24	0.4000	BWOB
Tail Slurry	BJCem P50.6.01C	IntegraGuard GW-86	0.1000	BWOB
Tail Slurry	BJCem P50.6.01C	BONDING AGENT, BA-90	3.0000	LBS/SK
Tail Slurry	BJCem P50.6.01C	FOAM PREVENTER, FP-25	0.3000	BWOB
Tail Slurry	BJCem P50.6.01C	RETARDER, SR-20	0.2000	BWOB
Tail Slurry	BJCem P50.6.01C	CEMENT, CLASS G	50.0000	PCT
Tail Slurry	BJCem P50.6.01C	EXTENDER, BENTONITE	4.0000	BWOB
Displacement 1	Retarded Water	RETARDER, SR-61L	0.1000	GPB
Displacement Final	Water + Chems	BIOCIDE, BIOC11139W	0.0210	GPB
Displacement Final	Water + Chems	OXYGEN SCAVENGER, OS-30	0.1680	GPB
Displacement Final	Water + Chems	CORROSION INHIBITORS, CI-27	0.2100	GPB

DISPLACEMENT AND END OF JOB SUMMARY

Displaced By	BJ Services	Amt of Cement Returned / Reversed	0
Calculated Displacement Vol (bbls)	265 bbls	Method Used to Verify Returns	Flow Meter
Actual Displacement Vol (bbls)	245 bbls	Amt of Spacer to Surface	0
Did Float Hold?	Yes	Pressure Left on Casing (psi)	0
Bump Plug	Yes	Amt Bled Back After Job	.5
Bump Plug Pressure (psi)	1400	Total Volume Pumped (bbls)	524 .00
Were Returns Planned at Surface	No	Top Out Cement Spotted	No
Cement Returns During Job	Yes	Lost Circulation During Cement Job	No

BJ Cementing Event Log

Long String - Cheyenne, WY - Michael Lopez

SEQ	START DATE / TIME	EVENT	DENSITY (ppg)	PUMP RATE (bpm)	PUMP VOL (bbls)	PIPE PRESSURE (psi)	COMMENTS
1	09/15/2019 15:00	Callout					Arrive at yard-1400 to pre-trip vehicles; bol 2200
2	09/15/2019 16:30	Callout					Steacs brief - driving to location
3	09/15/2019 16:45	Callout					Depart for location at
4	09/15/2019 17:00	Callout					Arrive at location at
5	09/15/2019 21:00	STEACS Briefing					Steacs brief for rigging up
6	09/15/2019 21:10	Rig Up					Rig up to standards
7	09/15/2019 23:20	STEACS Briefing					Safety meeting with all personnel on location
8	09/15/2019 23:45	Prime Up	8.3000	3.00	3.00		Three bbls Of Water Ahead
9	09/15/2019 23:47	Pressure Test	8.3000		3.00	6500.00	Pressure test
10	09/16/2019 00:06	Pump Spacer	8.3000	4.00	40.00	1100.00	Fresh Water - 40 bbls
11	09/16/2019 00:16	Pump Tail Cement	8.3000	6.00	219.00	200.00	Tail = 13.5 ppg; 770 sks; Yield = 1.593 cuft/sk; Mix Water = 7.95 gal/sk
12	09/16/2019 00:54	Wash Pumps and Lines	8.3000				Shutdown and Wash Up
13	09/16/2019 01:05	Drop Top Plug	8.3000				Drop Plug
14	09/16/2019 01:05	Pump Displacement	8.3000	8.00	20.00	200.00	First 20 bbls with SR-61L
15	09/16/2019 01:13	Pump Displacement	8.3000	8.00	50.00	2000.00	Biocide = 10 gals; Scavenger = 30 gals; Corrosion Inhibitor = 55 gals
16	09/16/2019 01:19	Pump Displacement	8.3000	8.00	100.00	2700.00	Biocide = 10 gals; Scavenger = 30 gals; Corrosion Inhibitor = 55 gals
17	09/16/2019 01:26	Pump Displacement	8.3000	7.00	150.00	2000.00	Biocide = 10 gals; Scavenger = 30 gals; Corrosion Inhibitor = 55 gals
18	09/16/2019 01:34	Pump Displacement	8.3000	7.00	200.00	1900.00	Biocide = 10 gals; Scavenger = 30 gals; Corrosion Inhibitor = 55 gals
19	09/16/2019 01:44	Land Plug	8.3000	2.00	265.00		Circulating Pressure = 900 psi; Bumped At = 1400 psi
20	09/16/2019 01:44	Other (See comment)	8.3000			1400.00	Held Pressure
21	09/16/2019 01:45	Other (See comment)	8.3000				Pressured up get a wetshoe
22	09/16/2019 01:47	Other (See comment)	8.3000			2900.00	Wetshoe at 2900 psi

Page 1

Client: HighPoint Operating Corporation

Well: RSU ANSCHUTZ FED #4-61-5-0909CN

Well 05-123-50078
API:



Plan #: ORD-21167-V4W3K00

Execution #: EXC-21167-V4W3K002

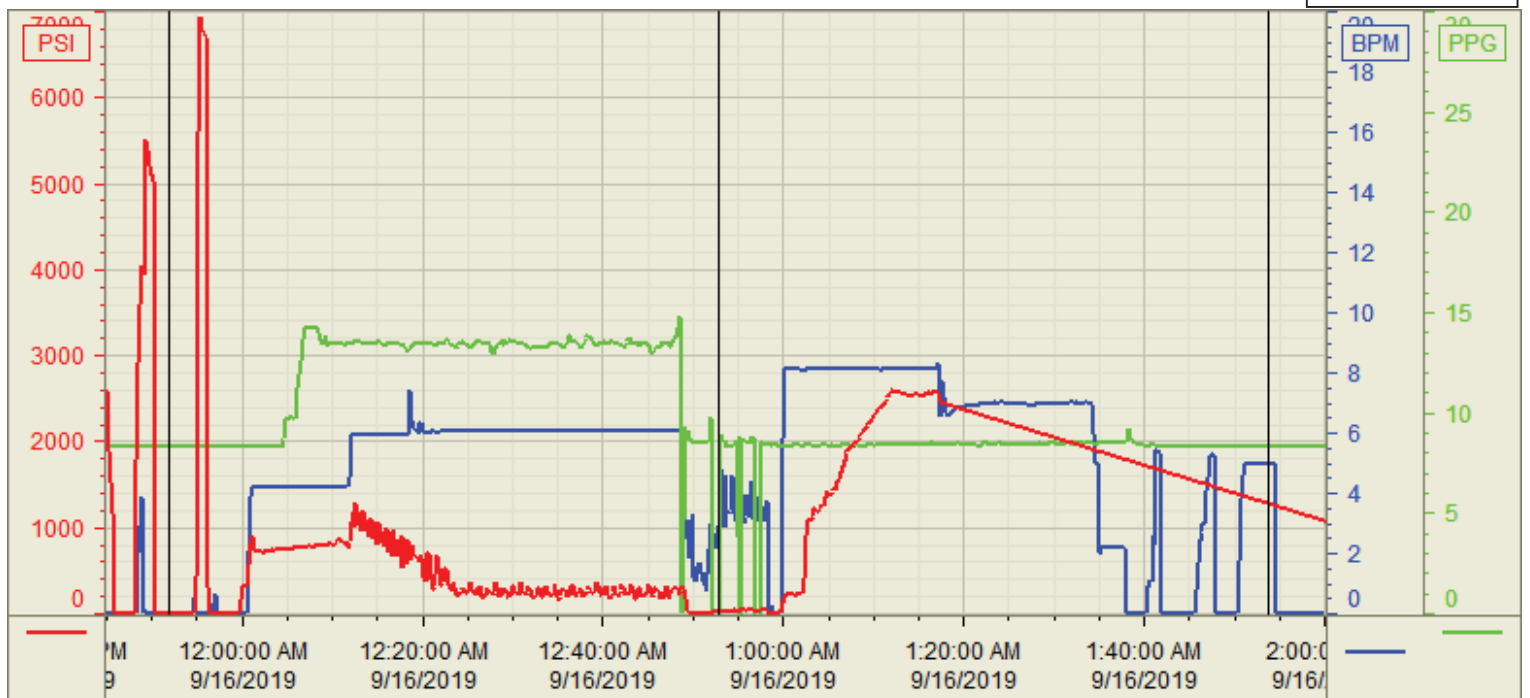
Quote #: QUO-36544-Y0S2P4

23	09/16/2019 01:48	Other (See comment)	8.3000	7.00	2.50	1400.00	Pumped 2.5 bbls
24	09/16/2019 01:49	Check Floats					Floats Held .5 bbl Back
25	09/16/2019 01:49	STEACS Briefing					Steacs brief to rig down
26	09/16/2019 02:00	Rig Down					Rig down
27	09/16/2019 03:00	STEACS Briefing					Steacs brief to drive back to yard
28	09/16/2019 03:10	Leave Location					Leave location

Customer: HighPoint Operating
Well Number: 4-61-5-0909CN
Lease Info: RSU Anschutz



Print Date/Time
9/16/2019 2:53:30 AM



	Name	Time stamp (LL)	Y value (LL)	Time stamp (UL)	Y value (UL)	
1	DS - Press (PSI)	9/15/2019 11:51:49	4.2 i.	9/16/2019 1:53:39 A	1291.3 i. u.	
2	Recirc - Density (PPG)	9/15/2019 11:51:52	8.30	9/16/2019 1:53:42 A	8.31	
3	Combined Rate	9/15/2019 11:51:52	0.00	9/16/2019 1:53:39 A	4.99 i.	
4						
5						
						Source: Control1 2:53:25 AM