

## Measured Depth Log

UNKNOWN	ANHYDRITE	BENTONITE	BRECCIA	CEMENT	CHALK	CHEST	CLAY CHOKO SAND	CLAYSTONE

## Operator

CORP.

STE. 2300  
0202

## Geologist

CORP.

STE. 2300  
0202

## Other

WELLSITE GEOLOGIST

WELLSITE GEOLOGIST

## Rock Types

	METAMORPHIC		SHALY SILTSTONE
	NO SAMPLE		SILTY SHALE
	SALT		TILL
	GRANITE		WELDED TUFF
	GYPSUM		
	IGNEOUS		
	LIMESTONE		
	SHALE		
	SHALE COLORED		
	SIDERITE or LIMONITE		
	MARLSTONE		
	SHALY SANDSTONE		

## Accessories

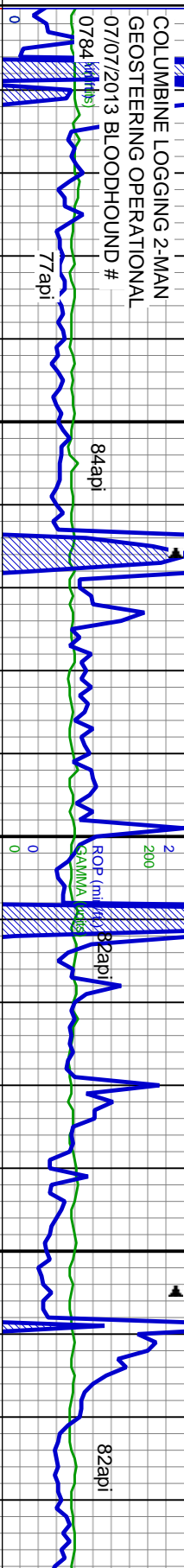
<b>Fossils</b>		F FOSSIL		ARGILLACEOUS		FERRUGINOUS		TUFFACEOUS
	GASTROPOD		INOCERAMUS		ARGILLITE GRAIN		GYPSIFEROUS	<b>Stringer</b>
	ALGAE		OOLITE		B BENTONITE		HEAVY MINERAL	
	AMPHIPORA		OSTRACOD		BITUMINOUS SUBSTANCE		KAOLIN	
	BELLENNITE		PELECYPOD		BRECCIA FRAGMENTS		MARLSTONE	
	BIOCLASTIC		PELLET		CALCAREOUS		MINERAL CRYSTALS	
	BRACHIOPOD		PI SULITE		CARBONACEOUS FLAKES		NODULES	
	BRACHIOZOA		PLANT REMAINS		CHERT		PHOSPHATE PELLET	
	CEPHALOPOD		PLANT SPORES		COAL - THIN BEDS		PYRITE	
	CORAL		SCAPHOPOD		DOLOMITIC		SALT CAST	
	CRINOID		STROMATOPOROID		FELDSPAR		SANDY	
	ECHINOID						SILTY	
	FISH							
	FORAMINIFERA	<b>Minerals</b>		FERRUGINOUS PELLET				
			ARGILLACEOUS		FERRUGINOUS		TUFFACEOUS	
			GYPSIFEROUS					
			HEAVY MINERAL					
			KAOLIN					
			MARLSTONE					
			DOLOMITE STRINGER					
			GYPSUM STRINGER					
			LIMESTONE STRINGER					
			MARLSTONE (CALC) STRG					
			MARLSTONE (DOL) STRG					
			SANDSTONE STRINGER					
			SHALE STRINGER					
			SILTSTONE STRINGER					

## Other Symbols

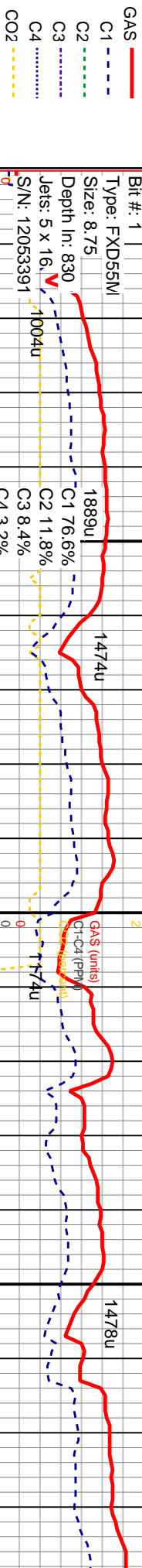
<b>Oil Show</b>	MOLDIC	ORGANIC	DEAD	EVEN	QUESTIONABLE	SPOTTED STAINING	<b>Porosity</b>	E EARTHY	F FENESTRAL	F FRACTURE	X INTERCRYSTALLINE	X INTERCRYSTALLINE
MOLDIC	ORGANIC	DEAD	EVEN	QUESTIONABLE	SPOTTED STAINING	E EARTHY	F FENESTRAL	F FRACTURE	X INTERCRYSTALLINE	X INTERCRYSTALLINE	X INTERCRYSTALLINE	X INTERCRYSTALLINE
FAULT	FORMATION TOP	GAS SHOW	MINDEPTH MIN DEPTH	NORMAL FAULT	OIL SHOW	OVERTURNED STRATA	REVERSE FAULT	SIDEWALL CORE (LEFT)	SIDEWALL CORE (RIGHT)	SLIDE	SURVEY	TRIP GAS
WIRELINE TESTED - LEFT	WIRELINE TESTED - RT	Fx FINELYXLN	GS GRAINSTONE	L LITHOGRAPHIC	A ANGULAR	R ROUNDED	S SUBANG	P SUBRAND	BS BOUNDSTONE	C CHALKY	CX CRYPTOXLN	E EARTHY
WIRELINE TESTED - LEFT	WIRELINE TESTED - RT	Fx FINELYXLN	GS GRAINSTONE	L LITHOGRAPHIC	A ANGULAR	R ROUNDED	S SUBANG	P SUBRAND	BS BOUNDSTONE	C CHALKY	CX CRYPTOXLN	E EARTHY
WIRELINE TESTED - LEFT	WIRELINE TESTED - RT	Fx FINELYXLN	GS GRAINSTONE	L LITHOGRAPHIC	A ANGULAR	R ROUNDED	S SUBANG	P SUBRAND	BS BOUNDSTONE	C CHALKY	CX CRYPTOXLN	E EARTHY
WIRELINE TESTED - LEFT	WIRELINE TESTED - RT	Fx FINELYXLN	GS GRAINSTONE	L LITHOGRAPHIC	A ANGULAR	R ROUNDED	S SUBANG	P SUBRAND	BS BOUNDSTONE	C CHALKY	CX CRYPTOXLN	E EARTHY
WIRELINE TESTED - LEFT	WIRELINE TESTED - RT	Fx FINELYXLN	GS GRAINSTONE	L LITHOGRAPHIC	A ANGULAR	R ROUNDED	S SUBANG	P SUBRAND	BS BOUNDSTONE	C CHALKY	CX CRYPTOXLN	E EARTHY
WIRELINE TESTED - LEFT	WIRELINE TESTED - RT	Fx FINELYXLN	GS GRAINSTONE	L LITHOGRAPHIC	A ANGULAR	R ROUNDED	S SUBANG	P SUBRAND	BS BOUNDSTONE	C CHALKY	CX CRYPTOXLN	E EARTHY
WIRELINE TESTED - LEFT	WIRELINE TESTED - RT	Fx FINELYXLN	GS GRAINSTONE	L LITHOGRAPHIC	A ANGULAR	R ROUNDED	S SUBANG	P SUBRAND	BS BOUNDSTONE	C CHALKY	CX CRYPTOXLN	E EARTHY
WIRELINE TESTED - LEFT	WIRELINE TESTED - RT	Fx FINELYXLN	GS GRAINSTONE	L LITHOGRAPHIC	A ANGULAR	R ROUNDED	S SUBANG	P SUBRAND	BS BOUNDSTONE	C CHALKY	CX CRYPTOXLN	E EARTHY
WIRELINE TESTED - LEFT	WIRELINE TESTED - RT	Fx FINELYXLN	GS GRAINSTONE	L LITHOGRAPHIC	A ANGULAR	R ROUNDED	S SUBANG	P SUBRAND	BS BOUNDSTONE	C CHALKY	CX CRYPTOXLN	E EARTHY
WIRELINE TESTED - LEFT	WIRELINE TESTED - RT	Fx FINELYXLN	GS GRAINSTONE	L LITHOGRAPHIC	A ANGULAR	R ROUNDED	S SUBANG	P SUBRAND	BS BOUNDSTONE	C CHALKY	CX CRYPTOXLN	E EARTHY
WIRELINE TESTED - LEFT	WIRELINE TESTED - RT	Fx FINELYXLN	GS GRAINSTONE	L LITHOGRAPHIC	A ANGULAR	R ROUNDED	S SUBANG	P SUBRAND	BS BOUNDSTONE	C CHALKY	CX CRYPTOXLN	E EARTHY
WIRELINE TESTED - LEFT	WIRELINE TESTED - RT	Fx FINELYXLN	GS GRAINSTONE	L LITHOGRAPHIC	A ANGULAR	R ROUNDED	S SUBANG	P SUBRAND	BS BOUNDSTONE	C CHALKY	CX CRYPTOXLN	E EARTHY
WIRELINE TESTED - LEFT	WIRELINE TESTED - RT	Fx FINELYXLN	GS GRAINSTONE	L LITHOGRAPHIC	A ANGULAR	R ROUNDED	S SUBANG	P SUBRAND	BS BOUNDSTONE	C CHALKY	CX CRYPTOXLN	E EARTHY
WIRELINE TESTED - LEFT	WIRELINE TESTED - RT	Fx FINELYXLN	GS GRAINSTONE	L LITHOGRAPHIC	A ANGULAR	R ROUNDED	S SUBANG	P SUBRAND	BS BOUNDSTONE	C CHALKY	CX CRYPTOXLN	E EARTHY
WIRELINE TESTED - LEFT	WIRELINE TESTED - RT	Fx FINELYXLN	GS GRAINSTONE	L LITHOGRAPHIC	A ANGULAR	R ROUNDED	S SUBANG	P SUBRAND	BS BOUNDSTONE	C CHALKY	CX CRYPTOXLN	E EARTHY
WIRELINE TESTED - LEFT	WIRELINE TESTED - RT	Fx FINELYXLN	GS GRAINSTONE	L LITHOGRAPHIC	A ANGULAR	R ROUNDED	S SUBANG	P SUBRAND	BS BOUNDSTONE	C CHALKY	CX CRYPTOXLN	E EARTHY
WIRELINE TESTED - LEFT	WIRELINE TESTED - RT	Fx FINELYXLN	GS GRAINSTONE	L LITHOGRAPHIC	A ANGULAR	R ROUNDED	S SUBANG	P SUBRAND	BS BOUNDSTONE	C CHALKY	CX CRYPTOXLN	E EARTHY
WIRELINE TESTED - LEFT	WIRELINE TESTED - RT	Fx FINELYXLN	GS GRAINSTONE	L LITHOGRAPHIC	A ANGULAR	R ROUNDED	S SUBANG	P SUBRAND	BS BOUNDSTONE	C CHALKY	CX CRYPTOXLN	E EARTHY
WIRELINE TESTED - LEFT	WIRELINE TESTED - RT	Fx FINELYXLN	GS GRAINSTONE	L LITHOGRAPHIC	A ANGULAR	R ROUNDED	S SUBANG	P SUBRAND	BS BOUNDSTONE	C CHALKY	CX CRYPTOXLN	E EARTHY
WIRELINE TESTED - LEFT	WIRELINE TESTED - RT	Fx FINELYXLN	GS GRAINSTONE	L LITHOGRAPHIC	A ANGULAR	R ROUNDED	S SUBANG	P SUBRAND	BS BOUNDSTONE	C CHALKY	CX CRYPTOXLN	E EARTHY
WIRELINE TESTED - LEFT	WIRELINE TESTED - RT	Fx FINELYXLN	GS GRAINSTONE	L LITHOGRAPHIC	A ANGULAR	R ROUNDED	S SUBANG	P SUBRAND	BS BOUNDSTONE	C CHALKY	CX CRYPTOXLN	E EARTHY
WIRELINE TESTED - LEFT	WIRELINE TESTED - RT	Fx FINELYXLN	GS GRAINSTONE	L LITHOGRAPHIC	A ANGULAR	R ROUNDED	S SUBANG	P SUBRAND	BS BOUNDSTONE	C CHALKY	CX CRYPTOXLN	E EARTHY
WIRELINE TESTED - LEFT	WIRELINE TESTED - RT	Fx FINELYXLN	GS GRAINSTONE	L LITHOGRAPHIC	A ANGULAR	R ROUNDED	S SUBANG	P SUBRAND	BS BOUNDSTONE	C CHALKY	CX CRYPTOXLN	E EARTHY
WIRELINE TESTED - LEFT	WIRELINE TESTED - RT	Fx FINELYXLN	GS GRAINSTONE	L LITHOGRAPHIC	A ANGULAR	R ROUNDED	S SUBANG	P SUBRAND	BS BOUNDSTONE	C CHALKY	CX CRYPTOXLN	E EARTHY
WIRELINE TESTED - LEFT	WIRELINE TESTED - RT	Fx FINELYXLN	GS GRAINSTONE	L LITHOGRAPHIC	A ANGULAR	R ROUNDED	S SUBANG	P SUBRAND	BS BOUNDSTONE	C CHALKY	CX CRYPTOXLN	E EARTHY
WIRELINE TESTED - LEFT	WIRELINE TESTED - RT	Fx FINELYXLN	GS GRAINSTONE	L LITHOGRAPHIC	A ANGULAR	R ROUNDED	S SUBANG	P SUBRAND	BS BOUNDSTONE	C CHALKY	CX CRYPTOXLN	E EARTHY
WIRELINE TESTED - LEFT	WIRELINE TESTED - RT	Fx FINELYXLN	GS GRAINSTONE	L LITHOGRAPHIC	A ANGULAR	R ROUNDED	S SUBANG	P SUBRAND	BS BOUNDSTONE	C CHALKY	CX CRYPTOXLN	E EARTHY
WIRELINE TESTED - LEFT	WIRELINE TESTED - RT	Fx FINELYXLN	GS GRAINSTONE	L LITHOGRAPHIC	A ANGULAR	R ROUNDED	S SUBANG	P SUBRAND	BS BOUNDSTONE	C CHALKY	CX CRYPTOXLN	E EARTHY
WIRELINE TESTED - LEFT	WIRELINE TESTED - RT	Fx FINELYXLN	GS GRAINSTONE	L LITHOGRAPHIC	A ANGULAR	R ROUNDED	S SUBANG	P SUBRAND	BS BOUNDSTONE	C CHALKY	CX CRYPTOXLN	E EARTHY
WIRELINE TESTED - LEFT	WIRELINE TESTED - RT	Fx FINELYXLN	GS GRAINSTONE	L LITHOGRAPHIC	A ANGULAR	R ROUNDED	S SUBANG	P SUBRAND	BS BOUNDSTONE	C CHALKY	CX CRYPTOXLN	E EARTHY
WIRELINE TESTED - LEFT	WIRELINE TESTED - RT	Fx FINELYXLN	GS GRAINSTONE	L LITHOGRAPHIC	A ANGULAR	R ROUNDED	S SUBANG	P SUBRAND	BS BOUNDSTONE	C CHALKY	CX CRYPTOXLN	E EARTHY
WIRELINE TESTED - LEFT	WIRELINE TESTED - RT	Fx FINELYXLN	GS GRAINSTONE	L LITHOGRAPHIC	A ANGULAR	R ROUNDED	S SUBANG	P SUBRAND	BS BOUNDSTONE	C CHALKY	CX CRYPTOXLN	E EARTHY
WIRELINE TESTED - LEFT	WIRELINE TESTED - RT	Fx FINELYXLN	GS GRAINSTONE	L LITHOGRAPHIC	A ANGULAR	R ROUNDED	S SUBANG	P SUBRAND	BS BOUNDSTONE	C CHALKY	CX CRYPTOXLN	E EARTHY
WIRELINE TESTED - LEFT	WIRELINE TESTED - RT	Fx FINELYXLN	GS GRAINSTONE	L LITHOGRAPHIC	A ANGULAR	R ROUNDED	S SUBANG	P SUBRAND	BS BOUNDSTONE	C CHALKY	CX CRYPTOXLN	E EARTHY
WIRELINE TESTED - LEFT	WIRELINE TESTED - RT	Fx FINELYXLN	GS GRAINSTONE	L LITHOGRAPHIC	A ANGULAR	R ROUNDED	S SUBANG	P SUBRAND	BS BOUNDSTONE	C CHALKY	CX CRYPTOXLN	E EARTHY
WIRELINE TESTED - LEFT	WIRELINE TESTED - RT	Fx FINELYXLN	GS GRAINSTONE	L LITHOGRAPHIC	A ANGULAR	R ROUNDED	S SUBANG	P SUBRAND	BS BOUNDSTONE	C CHALKY	CX CRYPTOXLN	E EARTHY
WIRELINE TESTED - LEFT	WIRELINE TESTED - RT	Fx FINELYXLN	GS GRAINSTONE	L LITHOGRAPHIC	A ANGULAR	R ROUNDED	S SUBANG	P SUBRAND	BS BOUNDSTONE	C CHALKY	CX CRYPTOXLN	E EARTHY
WIRELINE TESTED - LEFT	WIRELINE TESTED - RT	Fx FINELYXLN	GS GRAINSTONE	L LITHOGRAPHIC	A ANGULAR	R ROUNDED	S SUBANG	P SUBRAND	BS BOUNDSTONE	C CHALKY	CX CRYPTOXLN	E EARTHY
WIRELINE TESTED - LEFT	WIRELINE TESTED - RT	Fx FINELYXLN	GS GRAINSTONE	L LITHOGRAPHIC	A ANGULAR	R ROUNDED	S SUBANG	P SUBRAND	BS BOUNDSTONE	C CHALKY	CX CRYPTOXLN	E EARTHY
WIRELINE TESTED - LEFT	WIRELINE TESTED - RT	Fx FINELYXLN	GS GRAINSTONE	L LITHOGRAPHIC	A ANGULAR	R ROUNDED	S SUBANG	P SUBRAND	BS BOUNDSTONE	C CHALKY	CX CRYPTOXLN	E EARTHY
WIRELINE TESTED - LEFT	WIRELINE TESTED - RT	Fx FINELYXLN	GS GRAINSTONE	L LITHOGRAPHIC	A ANGULAR	R ROUNDED	S SUBANG	P SUBRAND	BS BOUNDSTONE	C CHALKY	CX CRYPTOXLN	E EARTHY
WIRELINE TESTED - LEFT	WIRELINE TESTED - RT	Fx FINELYXLN	GS GRAINSTONE	L LITHOGRAPHIC	A ANGULAR	R ROUNDED	S SUBANG	P SUBRAND	BS BOUNDSTONE	C CHALKY	CX CRYPTOXLN	E EARTHY
WIRELINE TESTED - LEFT	WIRELINE TESTED - RT	Fx FINELYXLN	GS GRAINSTONE	L LITHOGRAPHIC	A ANGULAR	R ROUNDED	S SUBANG	P SUBRAND	BS BOUNDSTONE	C CHALKY	CX CRYPTOXLN	E EARTHY
WIRELINE TESTED - LEFT	WIRELINE TESTED - RT	Fx FINELYXLN	GS GRAINSTONE	L LITHOGRAPHIC	A ANGULAR	R ROUNDED	S SUBANG	P SUBRAND	BS BOUNDSTONE	C CHALKY	CX CRYPTOXLN	E EARTHY
WIRELINE TESTED - LEFT	WIRELINE TESTED - RT	Fx FINELYXLN	GS GRAINSTONE	L LITHOGRAPHIC	A ANGULAR	R ROUNDED	S SUBANG	P SUBRAND	BS BOUNDSTONE	C CHALKY	CX CRYPTOXLN	E EARTHY
WIRELINE TESTED - LEFT	WIRELINE TESTED - RT	Fx FINELYXLN	GS GRAINSTONE	L LITHOGRAPHIC	A ANGULAR	R ROUNDED	S SUBANG	P SUBRAND	BS BOUNDSTONE	C CHALKY	CX CRYPTOXLN	E EARTHY
WIRELINE TESTED - LEFT	WIRELINE TESTED - RT	Fx FINELYXLN	GS GRAINSTONE	L LITHOGRAPHIC	A ANGULAR	R ROUNDED	S SUBANG	P SUBRAND	BS BOUNDSTONE	C CHALKY	CX CRYPTOXLN	E EARTHY
WIRELINE TESTED - LEFT	WIRELINE TESTED - RT	Fx FINELYXLN	GS GRAINSTONE	L LITHOGRAPHIC	A ANGULAR	R ROUNDED	S SUBANG	P SUBRAND	BS BOUNDSTONE	C CHALKY	CX CRYPTOXLN	E EARTHY
WIRELINE TESTED - LEFT	WIRELINE TESTED - RT	Fx FINELYXLN	GS GRAINSTONE	L LITHOGRAPHIC	A ANGULAR	R ROUNDED	S SUBANG	P SUBRAND	BS BOUNDSTONE	C CHALKY	CX CRYPTOXLN	E EARTHY
WIRELINE TESTED - LEFT	WIRELINE TESTED - RT	Fx FINELYXLN	GS GRAINSTONE	L LITHOGRAPHIC	A ANGULAR	R ROUNDED	S SUBANG	P SUBRAND	BS BOUNDSTONE	C CHALKY	CX CRYPTOXLN	E EARTHY
WIRELINE TESTED - LEFT	WIRELINE TESTED - RT	Fx FINELYXLN	GS GRAINSTONE	L LITHOGRAPHIC	A ANGULAR	R ROUNDED	S SUBANG	P SUBRAND	BS BOUNDSTONE	C CHALKY	CX CRYPTOXLN	E EARTHY

Slide/Rotate

ROP  
ROF  
GAMMA

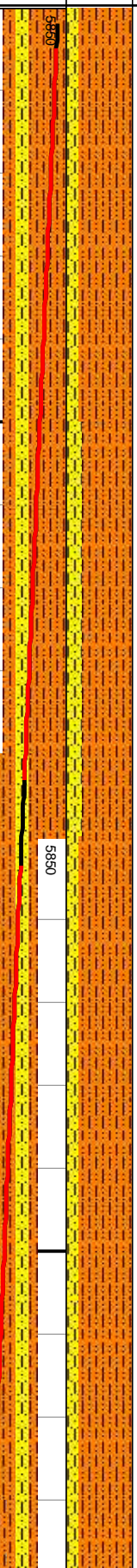


Total Gas & Chromatograph



Depth Labels

% Lith



Well Bore  
TVD

MD: 6,302'	MD: 6,333'	MD: 6,364'	MD: 6,395'	MD: 6,426'	MD: 6,456'	MD: 6,487'
TVD: 5,874.56'	TVD: 5,905.46'	TVD: 5,936.14'	TVD: 5,966.52'	TVD: 5,996.49'	TVD: 6,025.05'	TVD: 6,053.61'
Inclination: 2.3 °	Inclination: 6.6 °	Inclination: 10 °	Inclination: 12.9 °	Inclination: 16.6 °	Inclination: 19.7 °	Inclination: 22.4 °
Azimuth: 53.1 °	Azimuth: 70.7 °	Azimuth: 70.9 °	Azimuth: 70.7 °	Azimuth: 72.1 °	Azimuth: 77.2 °	Azimuth: 82.3 °
VS: 504.38'	VS: 506.76'	VS: 511.22'	VS: 517.36'	VS: 523.23'	VS: 534.48'	VS: 545.73'

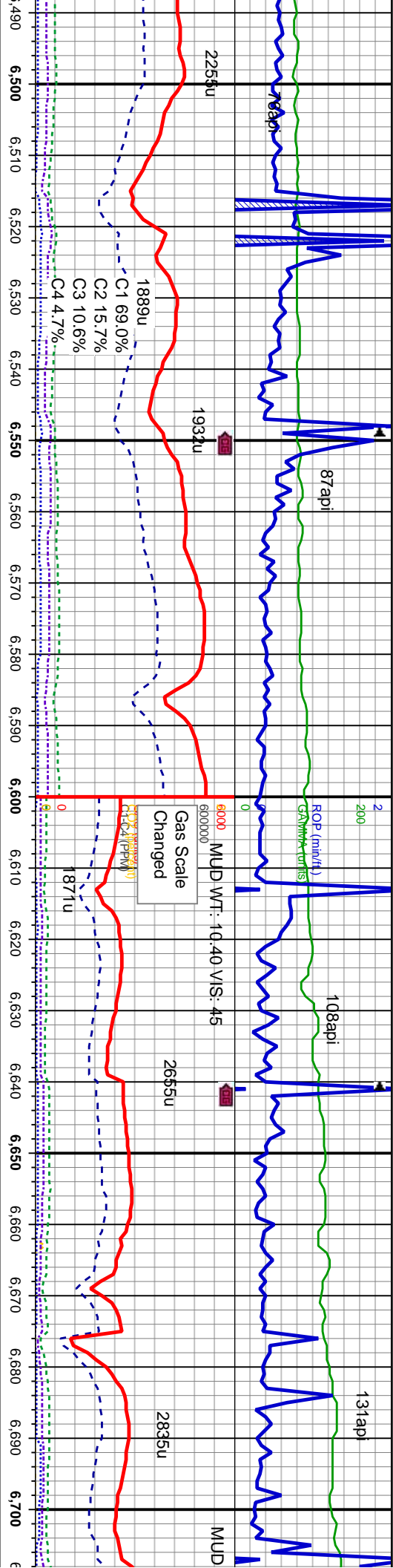
SHY SLTST: medgy-some dk gy, sft-sl firm, sb biky-sb ply, rthy lstr, lam silty tex, occ carb mat, sl calc,	SHY SLTST: medgy-some dk gy, sft-sl firm, sb biky-sb ply, rthy lstr, lam silty tex, occ carb mat, sl calc,	SHY SLTST: medgy-some dk gy, sft-sl firm, sb biky-sb ply, rthy lstr, lam silty tex, occ carb mat, sl calc, tr pyr	SHY SLTST: medgy-some dk gy, sft-sl firm, sb biky-sb ply, rthy lstr, lam silty tex, occ carb mat, sl calc, tr pyr	SHY SLTST: medgy-some dk gy, sft-sl firm, sb biky-sb ply, rthy lstr, lam silty tex, occ carb mat, sl calc, tr pyr	SHY SLTST: medgy-some dk gy, sft-sl firm, sb biky-sb ply, rthy lstr, lam silty tex, occ carb mat, sl calc, tr pyr	SHY SLTST: medgy-some dk gy, sft-sl firm, sb biky-sb ply, rthy lstr, lam silty tex, occ carb mat, sl calc, tr pyr
SHYSS: llyg, some medgy, occ S&P, firm-sl hd, mod-w srt, sb rd-rd, sd-sily mtx, v sl calc	SHYSS: llyg, some medgy, occ S&P, firm-sl hd, mod-w srt, sb rd-rd, sd-sily mtx, v sl calc	SHYSS: llyg, some medgy, occ S&P, firm-sl hd, mod-w srt, sb rd-rd, sd-sily mtx, v sl calc, mod abnt glau & biot	SHYSS: llyg, some medgy, occ S&P, firm-sl hd, mod-w srt, sb rd-rd, sd-sily mtx, v sl calc, mod abnt glau & biot	SHYSS: llyg, some medgy, occ S&P, firm-sl hd, mod-w srt, sb rd-rd, sd-sily mtx, v sl calc, mod abnt glau & biot	SHYSS: llyg, some medgy, occ S&P, firm-sl hd, mod-w srt, sb rd-rd, sd-sily mtx, v sl calc, mod abnt glau & biot	SHYSS: llyg, some medgy, occ S&P, firm-sl hd, mod-w srt, sb rd-rd, sd-sily mtx, v sl calc, mod abnt glau & biot

Oil Show

Images





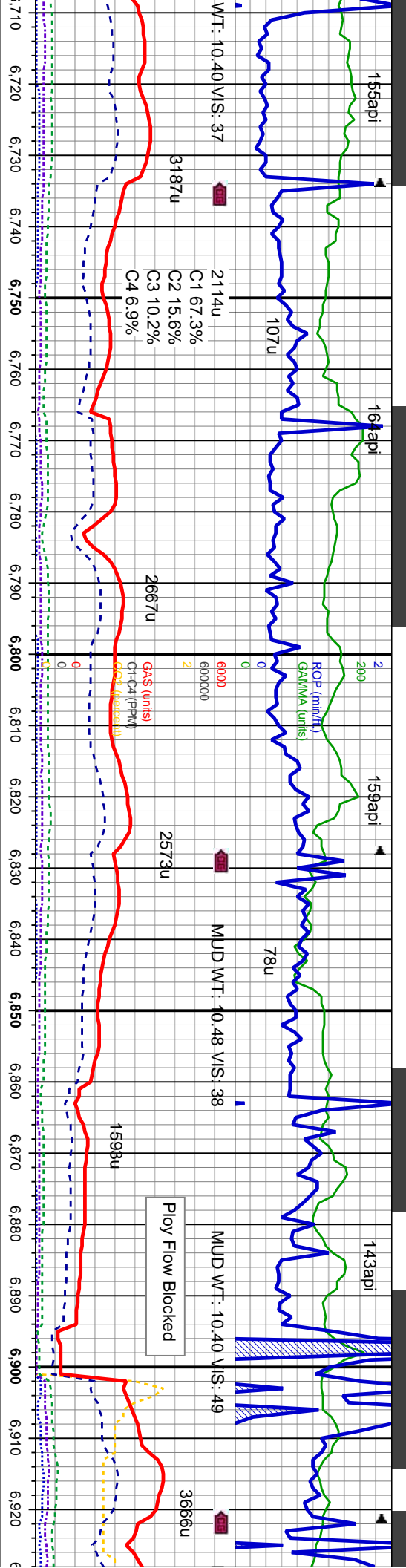


SHARON SPRINGS

488'	MD: 6,519'	MD: 6,549'	MD: 6,580'	MD: 6,611'	MD: 6,643'	MD: 6,674'	MD: 6,705'
6,054.74'	TVD: 6,082.69'	TVD: 6,108.84'	TVD: 6,134.92'	TVD: 6,159.69'	TVD: 6,183.56'	TVD: 6,205.03'	TVD: 6,222'
Inclination: 23.5 °	Inclination: 27.8 °	Inclination: 30.9 °	Inclination: 34.5 °	Inclination: 39.4 °	Inclination: 44.1 °	Inclination: 48.2 °	Inclination: 51.2 °
Azimuth: 81.2 °	Azimuth: 87.4 °	Azimuth: 92.6 °	Azimuth: 97.2 °	Azimuth: 99.7 °	Azimuth: 99.5 °	Azimuth: 98.1 °	Azimuth: 95.3 °
VS: 558.76'	VS: 572.27'	VS: 587.05'	VS: 602.93'	VS: 620.88'	VS: 639.89'	VS: 660.33'	VS: 680.33'
SHY SLTST: medgy-some dk gy, sft-sl firm, sb bly-sb ply, rthy istr, lam silty tex, occ carb mat, sl calc, tr pyr	SHY SLTST: mgy-occ dkgy, sft-sl firm, sb bly-sb ply, occ ply, silty-gly, arg mtx, sl calc, SHYSS: llyg-some mgy-gy brn, occ S&P, firm-sil hd, mod-w srt, sb rd-rd, sd-sily max, v sl calc, SLTY SH: med-dkgy, some brn blk - blk, sft - frm, bnnd, sb bly - sb ply some-com fis, sl carb, sl tr org mat, fnt bl mky cut, v fnt pale yel ring, v v fnt brn vis lt ring	SHY SLTST: mgy-occ dkgy, sft-sl firm, sb bly-sb ply, occ ply, silty-gly, arg mtx, sl calc, SHYSS: llyg-some mgy-gy brn, occ S&P, firm-sil hd, mod-w srt, sb rd-rd, sd-sily max, v sl calc, SLTY SH: med-dkgy, some brn blk - blk, sft - frm, bnnd, sb bly - sb ply some-com fis, sl carb, sl tr org mat, fnt bl mky cut, v fnt pale yel ring, v v fnt brn vis lt ring	SHY SLTST: mgy-occ dkgy, sft-sl firm, sb bly-sb ply, occ ply, silty-gly, arg mtx, sl calc, SHYSS: llyg-some mgy-gy brn, occ S&P, firm-sil hd, mod-w srt, sb rd-rd, sd-sily max, v sl calc, SLTY SH: med-dkgy, some brn blk - blk, sft - frm, bnnd, sb bly - sb ply some-com fis, sl carb, sl tr org mat, fnt bl mky cut, v fnt pale yel ring, v v fnt brn vis lt ring	SHY SLTST: mgy-occ dkgy, sft-sl firm, sb bly-sb ply, occ ply, silty-gly, arg mtx, sl calc, SHYSS: llyg-some mgy-gy brn, occ S&P, firm-sil hd, mod-w srt, sb rd-rd, sd-sily max, v sl calc, SLTY SH: med-dkgy, some brn blk - blk, sft - frm, bnnd, sb bly - sb ply some-com fis, sl carb, sl tr org mat, fnt bl mky cut, v fnt pale yel ring, v v fnt brn vis lt ring	SHY SLTST: mgy-occ dkgy, sft-sl firm, sb bly-sb ply, occ ply, silty-gly, arg mtx, sl calc, SHYSS: llyg-some mgy-gy brn, occ S&P, firm-sil hd, mod-w srt, sb rd-rd, sd-sily max, v sl calc, SLTY SH: med-dkgy, some brn blk - blk, sft - frm, bnnd, sb bly - sb ply some-com fis, sl carb, sl tr org mat, fnt bl mky cut, v fnt pale yel ring, v v fnt brn vis lt ring	SHY SLTST: mgy-occ dkgy, sft-sl firm, sb bly-sb ply, occ ply, silty-gly, arg mtx, sl calc, SHYSS: llyg-some mgy-gy brn, occ S&P, firm-sil hd, mod-w srt, sb rd-rd, sd-sily max, v sl calc, SLTY SH: med-dkgy, some brn blk - blk, sft - frm, bnnd, sb bly - sb ply some-com fis, sl carb, sl tr org mat, fnt bl mky cut, v fnt pale yel ring, v v fnt brn vis lt ring	SHY SLTST: mgy-occ dkgy, sft-sl firm, sb bly-sb ply, occ ply, silty-gly, arg mtx, sl calc, SHYSS: llyg-some mgy-gy brn, occ S&P, firm-sil hd, mod-w srt, sb rd-rd, sd-sily max, v sl calc, SLTY SH: med-dkgy, some brn blk - blk, sft - frm, bnnd, sb bly - sb ply some-com fis, sl carb, sl tr org mat, fnt bl mky cut, v fnt pale yel ring, v v fnt brn vis lt ring







MD: 6.736'	MD: 6.767'	MD: 6.798'	MD: 6.829'	MD: 6.860'	MD: 6.891'	MD: 6.922'
TVD: 6,245.45'	TVD: 6,265.46'	TVD: 6,285.64'	TVD: 6,305.92'	TVD: 6,325.86'	TVD: 6,345.03'	TVD: 6,362.9'
Inclination: 49.9 °	Inclination: 49.7 °	Inclination: 49.1 °	Inclination: 49.2 °	Inclination: 50.7 °	Inclination: 52.9 °	Inclination: 56 °
Azimuth: 90 °	Azimuth: 86.3 °	Azimuth: 82.3 °	Azimuth: 81.6 °	Azimuth: 80.7 °	Azimuth: 79.8 °	Azimuth: 79.6 °
VS: 681.9'	VS: 703.98'	VS: 726.45'	VS: 749.1'	VS: 772.12'	VS: 795.83'	VS: 820.48'

NIORARA

SLTY SH: med-dkgy, some brn blk - blk, sft - frm, brndd, sb blk - sb ply some-com fis, sl carb, sl tr org mat, tr pyr, tr	CHK: lt-med gy, sme wht, sft, sb blk, wxy-sb wxy lstr, mot tex, v calc,	MRSLT: m-dk gy, sme blk, sft, sb blk, rthy, mot tex, v calc, some fis, inbdd wi chk, frnt bl mod fast mly cut, frnt pale yel ring, v v frnt brn vis lt ring	MRSLT: m-dk gy, sme blk, sft, sb blk, rthy, mot tex, v calc, some fis, inbdd wi chk, abnt bent, tr pyr	CHK: lt-med gy, sme wht, sft, sb blk, sb wxy-rthy lstr, mot tex, v calc, bl wh mod fast sl string cut, pale yel gn ring, frnt brn vis lt ring	MRSLT: m-dk gy, sme blk, sft, tex, v calc, some fis, inbdd wi pyr	CHK: lt-med gy, sme wht, sft, lstr, mot tex, v calc, bl wh mod pale yel gn ring, frnt brn vis lt r
---	---	---	--	---	---	--



7/09/2013

7/09/2013

65api

105api

82api

98api

69api

MUD WT: 10.40 V/S: 38

MUD WT: 10.40 V/S: 36

4117u

311

C1

C2

C3

C4

C1

C2

C3

C4

C1

C2

C3

C4

C1

C2

C3

C4

C1

C2

C3

C4

C1

C2

C3

C4

C1

C2

C3

C4

C1

C2

C3

C4

C1

C2

C3

C4

C1

C2

C3

C4

C1

C2

C3

C4

C1

C2

C3

C4

C1

C2

C3

C4

C1

C2

C3

C4

C1

C2

C3

C4

C1

C2

C3

C4

C1

C2

C3

C4

C1

C2

C3

C4

C1

C2

C3

C4

C1

C2

C3

C4

C1

C2

C3

C4

C1

C2

C3

C4

C1

C2

C3

C4

C1

C2

C3

C4

C1

C2

C3

C4

C1

C2

C3

C4

C1

C2

C3

C4

C1

C2

C3

C4

C1

C2

C3

C4

C1

C2

C3

C4

C1

C2

C3

C4

C1

C2

C3

C4

C1

C2

C3

C4

C1

C2

C3

C4

C1

C2

C3

C4

C1

C2

C3

C4

C1

C2

C3

C4

C1

C2

C3

C4

C1

C2

C3

C4

C1

C2

C3

C4

C1

C2

C3

C4

C1

C2

C3

C4

C1

C2

C3

C4

C1

C2

C3

C4

C1

C2

C3

C4

C1

C2

C3

C4

C1

C2

C3

C4

C1

C2

C3

C4

C1

C2

C3

C4

C1

C2

C3

C4

C1

C2

C3

C4

C1

C2

C3

C4

C1

C2

C3

C4

C1

C2

C3

C4

C1

C2

C3

C4

C1

C2

C3

C4

C1

C2

C3

C4

C1

C2

C3

C4

C1

C2

C3

C4

C1

C2

C3

C4

C1

C2

C3

C4

C1

C2

C3

C4

C1

C2

C3

C4

C1

C2

C3

C4

C1

C2

C3

C4

C1

C2

C3

C4

C1

C2

C3

C4

C1

C2

C3

C4

C1

C2

C3

C4

C1

C2

C3

C4

C1

C2

C3

C4

C1

C2

C3

C4

C1

C2

C3

C4

C1

C2

C3

C4

C1

C2

C3

C4

C1

C2

C3

C4

C1

C2

C3

C4

C1

C2

C3

C4

C1

C2

C3

C4

C1

C2

C3

C4

C1

C2

C3

C4

C1

C2

C3

C4

C1

C2

C3

C4

C1

C2

C3

C4

C1

C2

C3

C4

C1

C2

C3

C4

C1

C2

C3

C4

C1

C2

C3

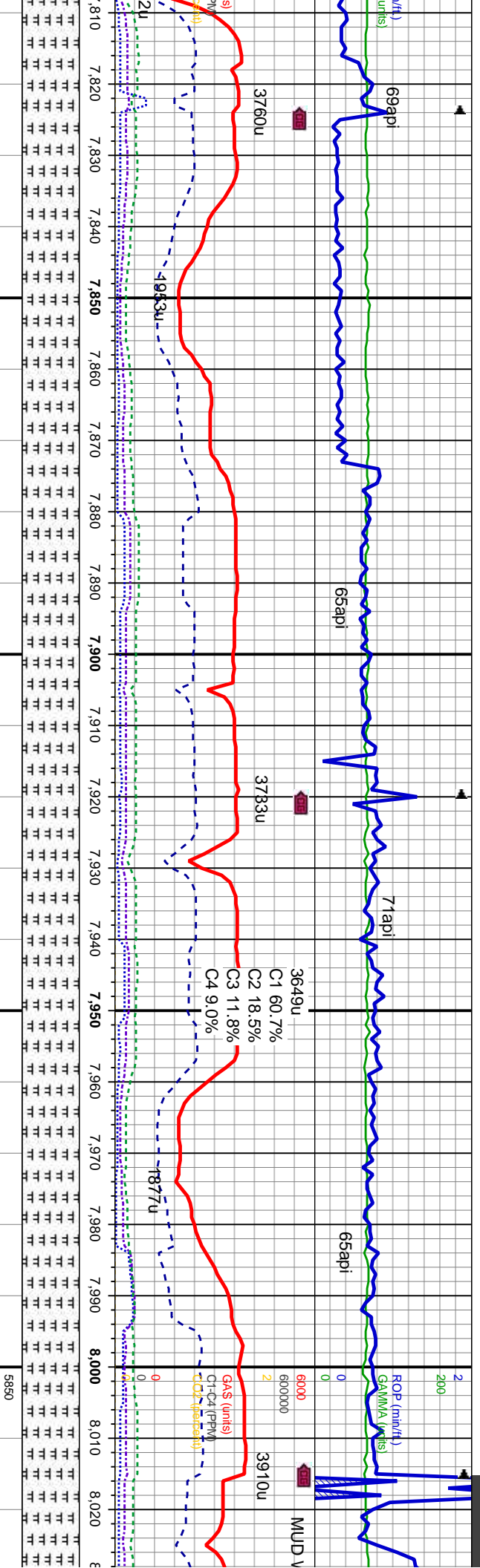












MD: 7,859  
TVD: 6,463  
Inclination: 90.2 °  
Azimuth: 87.6 °  
VS: 1,680.51 ' ...

MD: 7,955
TVD: 6,464.31
Inclination: 90.2 °
Azimuth: 86.8 °
VS: 1,771.11

: dk gy-blk, some med gy, sft, sb blk, rthy,  
 x, v calc, unc fls, intbdd wi chk, tr dissm  
 r wh fos frag; bl sl mky cut, fnt pale yel  
 nt bm vis lt ring

MRLST: dk gy-blk, some med gy, sft, sb biky, rthy,  
gritty tex, v calc, unc fis, inbodd wi chlk, tr dissim  
pyr, vstr wh fos frag; bl sl mky cut, fnt pale yel  
ring, v fnt bwn vis lt ring

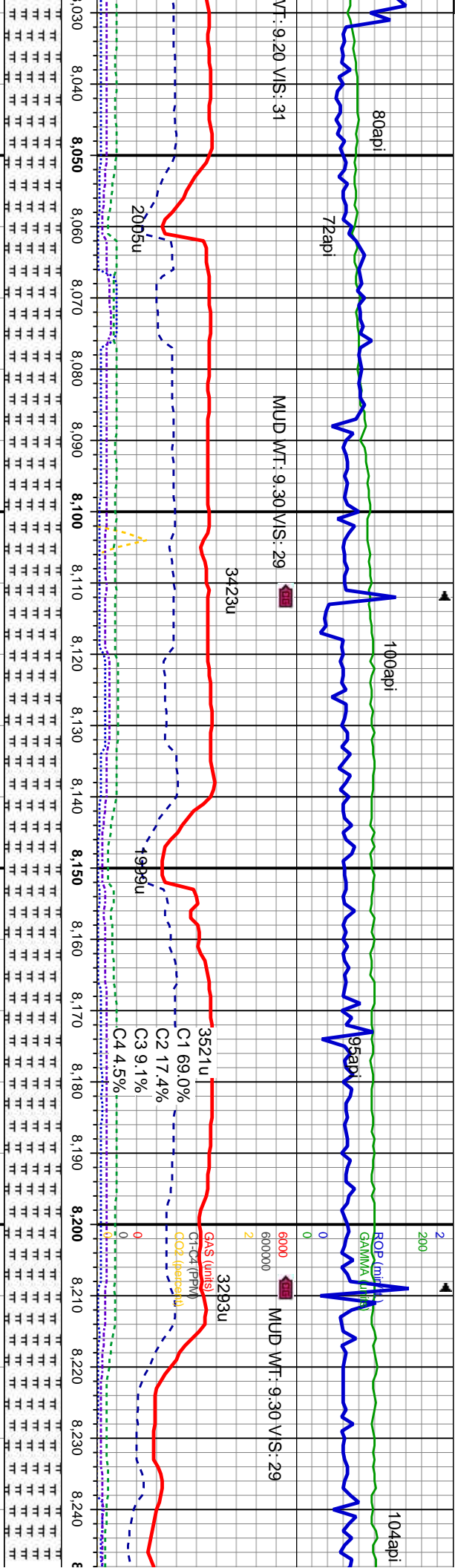
MRLST: dk gy-blk, some med gy, sit, sb biky, rthy  
gritty tex, v calc, unc fis, inbodd wi chk, tr dissm  
pyr, vstr wh fos frag, bl sl mky cut, fnt pale yel  
ring, v fnt brn vis it ring

MLRLS : dk gy-dik, some med gy, sit, sb diky, rny  
gritty tex, v calc, unc fls, inbodd wi chk, tr diss  
pyr, vsstr wh fos frag; bl sl rny cut, fnt pale yel  
ring, v fnt brn vis lt ring

MRLST: dk gy-bik, some med  
gritty tex, v calc, unc fis, intbda  
pyr, vsitr wh fos frag; bl sl mky  
ring, v fnt brn vis lt ring  
7150







MD: 8.050  
TVD: 6,463.31  
Inclination: 91 °  
Azimuth: 88.1 °  
VS: 1,860.13

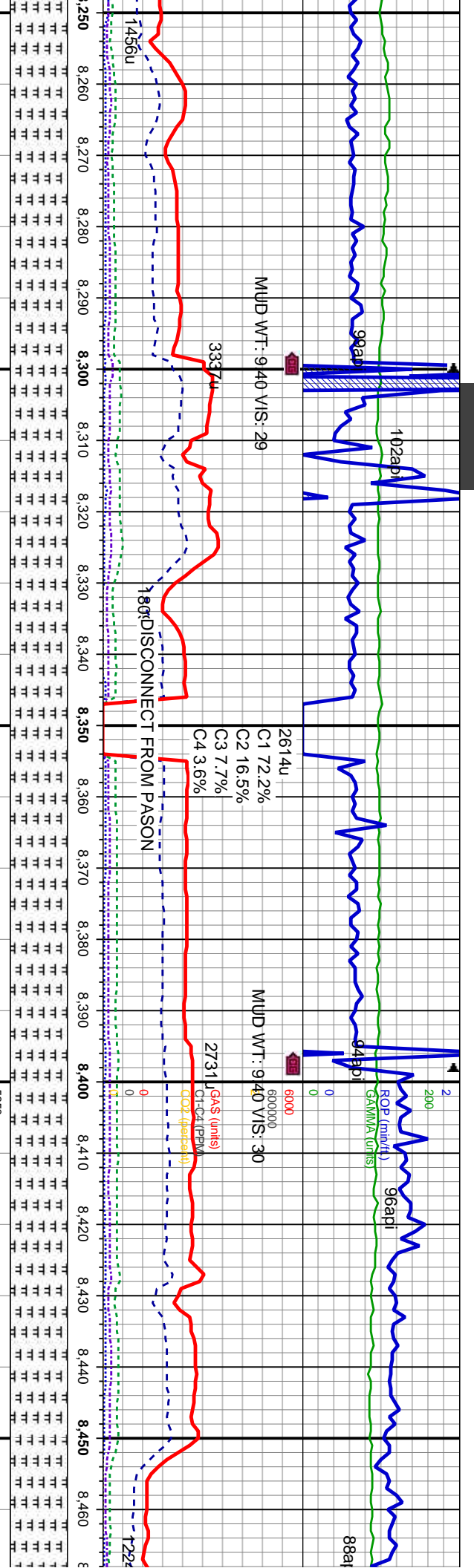
MD: 8.146  
TVD: 6,461.05  
Inclination: 91.7 °  
Azimuth: 88.4 °  
VS: 1,949.6

MD: 8.242  
TVD: 6,458.2  
Inclination: 91.7 °  
Azimuth: 87.4 °  
VS: 2,039.26

gy, sft, sb blk, rthy, cut, fnt pale yel  
MRLST: dk gy-blk, some med gy, sft, sb blk, rthy, gritty tex, v calc, unc fis, inbdd wi chk, tr dissim pyr, vstr wh fos frag, tr inoc fos frag, bl sl mky cut, fnt pale yel ring, v fnt brn vis lt ring

MRLST: dk gy-blk, some med gy, sft, sb blk, rthy, gritty tex, v calc, unc fis, inbdd wi chk, tr dissim pyr, vstr wh fos frag, tr inoc fos frag, bl sl mky cut, fnt pale yel ring, v fnt brn vis lt ring





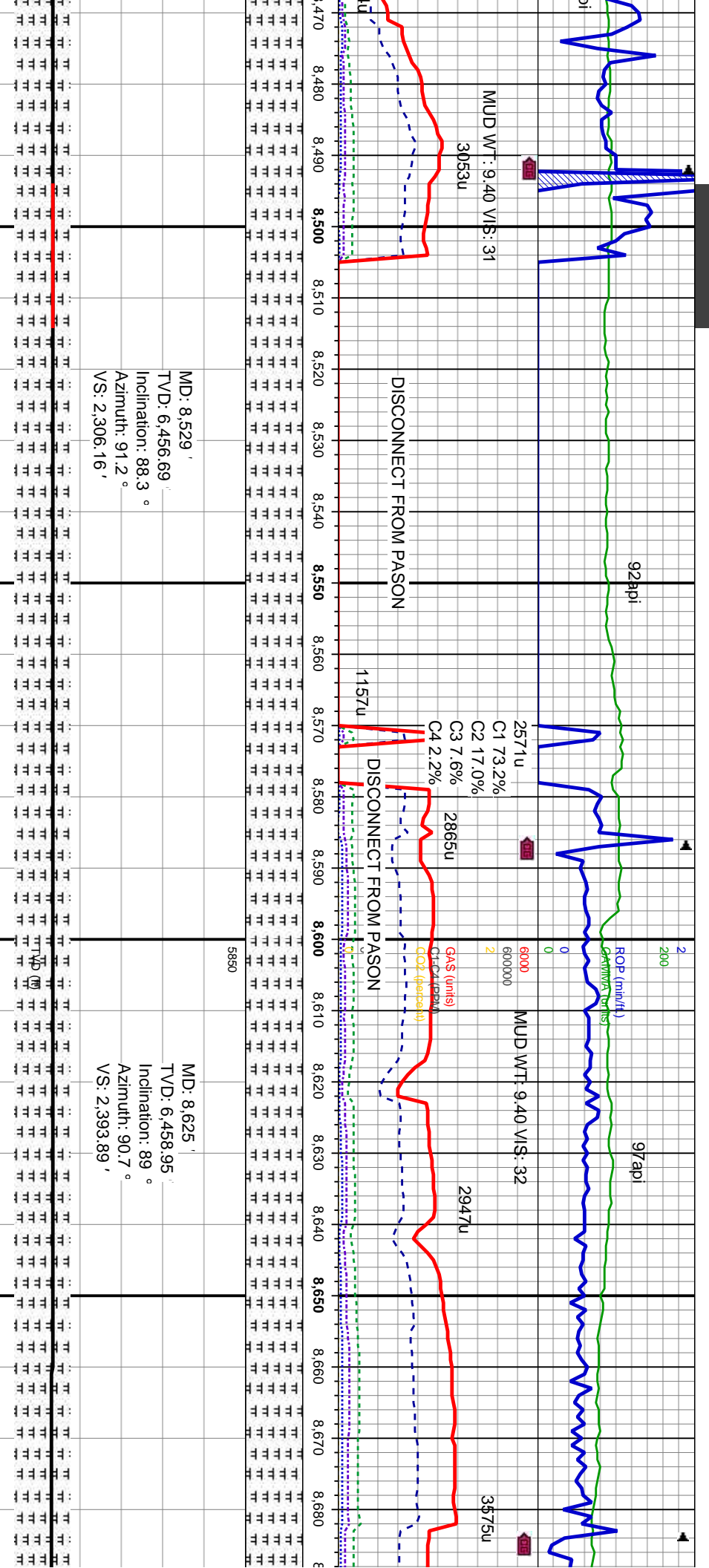
MD: 8,338  
TVD: 6,456.61  
Inclination: 90.2 °  
Azimuth: 88.3 °  
VS: 2,128.97

MD: 8,434  
TVD: 6,455.86  
Inclination: 90.7 °  
Azimuth: 88.1 °  
VS: 2,218.49

MD	TVD	Inclination	Azimuth	VS
8,338	6,456.61	90.2 °	88.3 °	2,128.97
8,434	6,455.86	90.7 °	88.1 °	2,218.49







some med gy, sft, sb blk, rthy,  
unc fis, intbdd wi chk, tr dissn  
pyr, tr-mod abnt inoc fos frag, tr  
cut, int, pale yel ring, v fnt brn

MRLST: dk gy-blk, some med gy, sft, sb blk, rthy,  
gritty tex, v calc, unc fis, intbdd wi chk, tr dissn  
pyr, vsir wh fos frag, tr-mod abnt inoc fos frag, tr  
dism pyr; bl sl mky cut, int pale yel ring, v fnt brn  
vis lt ring

MRLST: dk gy-blk, some med gy, sft, sb blk, rthy,  
gritty tex, v calc, unc fis, intbdd wi chk, tr dissn  
pyr, vsir wh fos frag, tr-mod abnt inoc fos frag, tr  
dism pyr; bl sl mky cut, int pale yel ring, v fnt brn  
vis lt ring

MRLST: dk gy-blk, some med gy, sft, sb blk, rthy,  
gritty tex, v calc, unc fis, intbdd wi chk, tr dissn  
pyr, vsir wh fos frag, tr-mod abnt inoc fos frag, tr  
dism pyr; bl sl mky cut, int pale yel ring, v fnt brn  
vis lt ring

MRLST: dk gy-blk, some med gy, sft, sb blk, rthy,  
gritty tex, v calc, unc fis, intbdd wi chk, tr dissn  
pyr, vsir wh fos frag, tr-mod abnt inoc fos frag, tr  
dism pyr; bl sl mky cut, int pale yel ring, v fnt brn  
vis lt ring

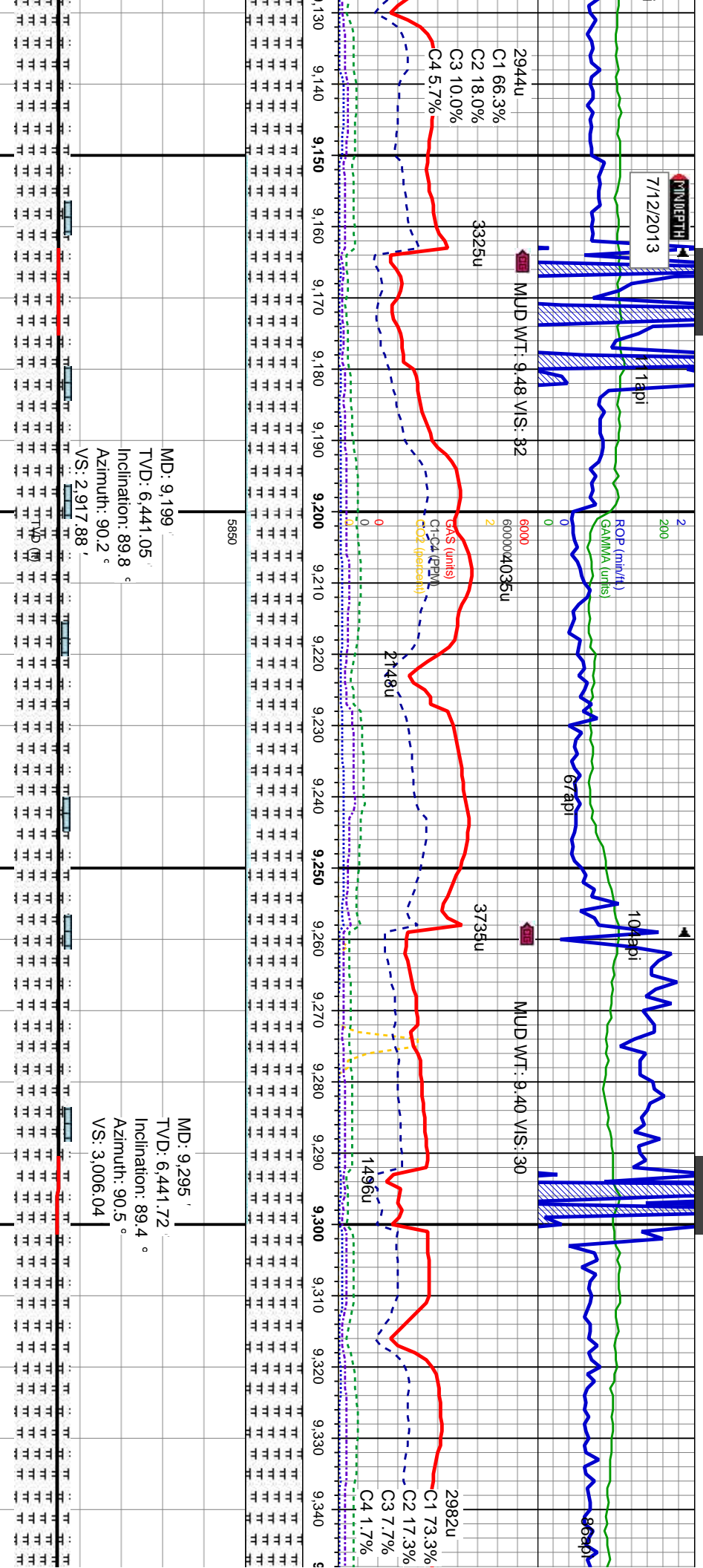












gy, sft, sb blk, rthy,  
d wi chk, tr diss  
bnt inoc fos frag, tr  
e yel ring, v fnt brn

MRLST: dk gy-blk, some med gy, sft, sb blk, rthy,  
gritty tex, v calc, unc fis, inbdd wi chk, tr diss pyr  
CHK: lt-med gy, sft, sb blk, wxy-sb wxy lst, mot  
tex, v calc, mod abnt-abnt fos frag, bl mod fast  
mky cut, fnt pale yel ring, v fnt brn vis lt ring

MRLST: dk gy-blk, some med gy, sft, sb blk, rthy,  
gritty tex, v calc, unc fis, inbdd wi chk, tr diss pyr  
CHK: lt-med gy, sft, sb blk, wxy-sb wxy lst, mot  
tex, v calc, mod abnt-abnt fos frag, bl mod fast  
mky cut, fnt pale yel ring, v fnt brn vis lt ring

MRLST: dk gy-blk, some med gy, sft, sb blk, rthy,  
gritty tex, v calc, unc fis, inbdd wi chk, tr diss  
pyr: bl mod fast mky cut, fnt pale yel ring, v fnt brn  
vis lt ring





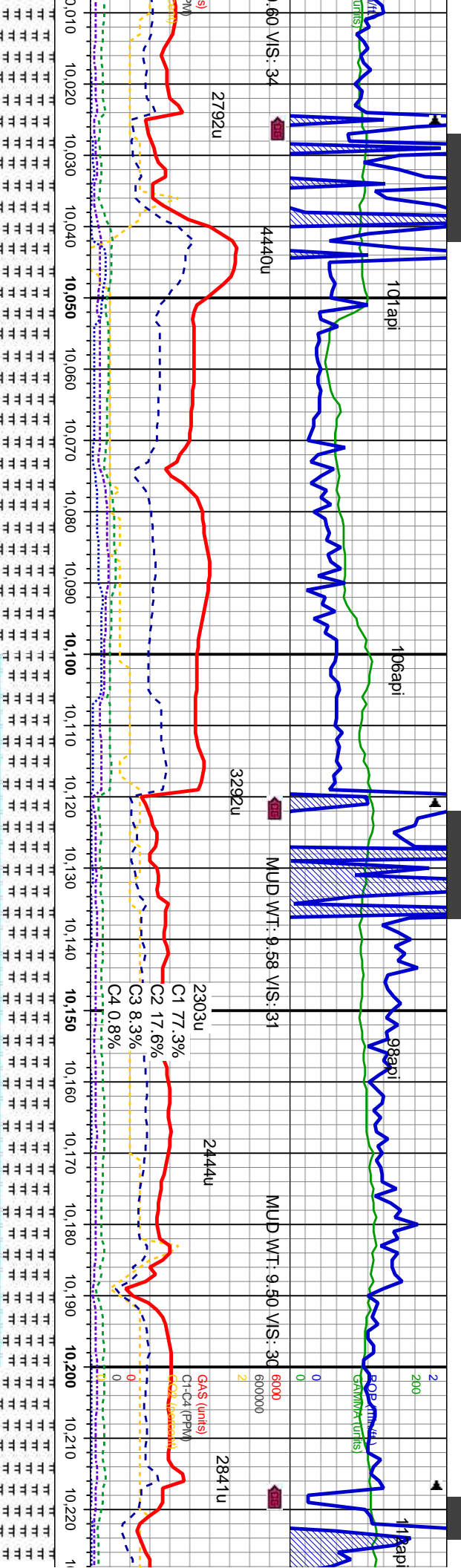












MD: 10,062'  
TVD: 6,434.63'  
Inclination: 88.9°  
Azimuth: 87.6°  
VS: 3,726.57'

MD: 10,158'  
TVD: 6,437.06'  
Inclination: 88.2°  
Azimuth: 89.5°  
VS: 3,815.85'

MRSLST: dk gy-blk, some med gy, sft, sb blkly, rthy, gritty tex, v calc, unc fis, inbdd wi chk, tr dissim pyr  
CHK: lt-med gy, sft, sb blkly, wxy-sb wxy lst, mot tex, v calc, mod abnt-abnt fos frag, bl mod fast mky cut, fnt pale yel ring, v fnt brn vis lt ring

MRSLST: dk gy-blk, some med gy, sft, sb blkly, rthy, gritty tex, v calc, unc fis, inbdd wi chk, tr dissim pyr  
CHK: lt-med gy, sft, sb blkly, wxy-sb wxy lst, mot tex, v calc, mod abnt-abnt fos frag, bl mod fast mky cut, fnt pale yel ring, v fnt brn vis lt ring

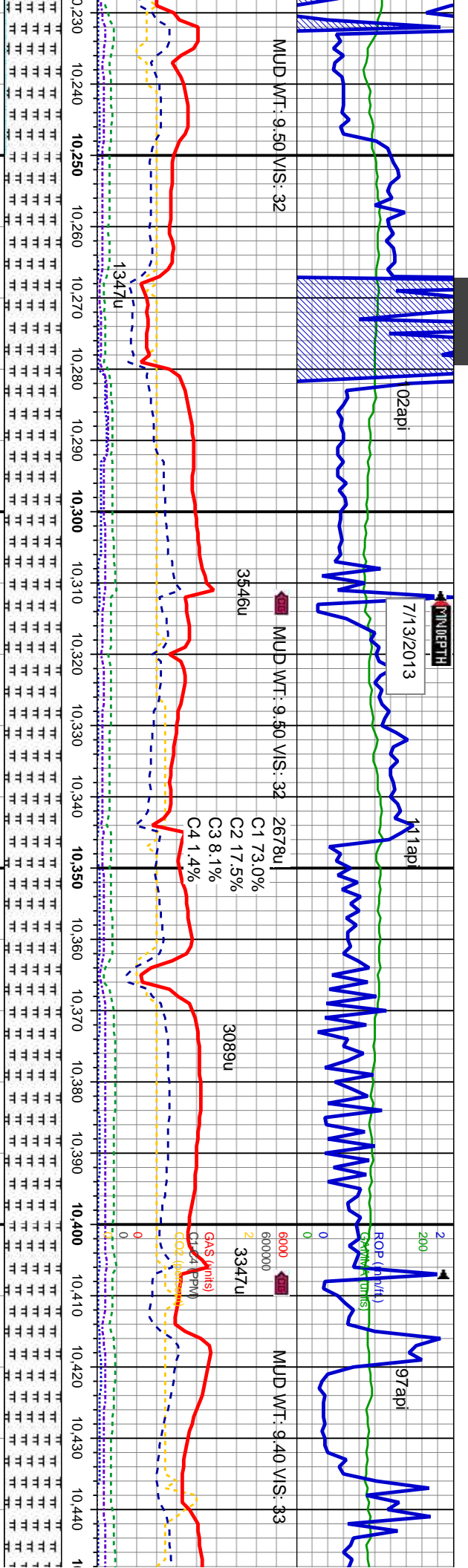
MRSLST: dk gy-blk, some med gy, sft, sb blkly, rthy, gritty tex, v calc, unc fis, inbdd wi chk, tr dissim pyr  
CHK: lt-med gy, sft, sb blkly, wxy-sb wxy lst, mot tex, v calc, mod abnt-abnt fos frag, bl mod fast mky cut, fnt pale yel ring, v fnt brn vis lt ring

MRSLST: dk gy-blk, some med gy, sft, sb blkly, rthy, gritty tex, v calc, unc fis, inbdd wi chk, tr dissim pyr  
CHK: lt-med gy, sft, sb blkly, wxy-sb wxy lst, mot tex, v calc, mod abnt-abnt fos frag, bl mod fast mky cut, fnt pale yel ring, v fnt brn vis lt ring

7150







MD: 10,253'  
TVD: 6,438.72'  
Inclination: 89.8 °  
Azimuth: 88.6 °  
VS: 3,903.9'

MD: 10,349'  
TVD: 6,437.38'  
Inclination: 91.8 °  
Azimuth: 87.4 °  
VS: 3,993.53'

MD: 10,441'  
TVD: 6,433'  
Inclination: 8 °  
Azimuth: 8 °  
VS: 4,083.3'

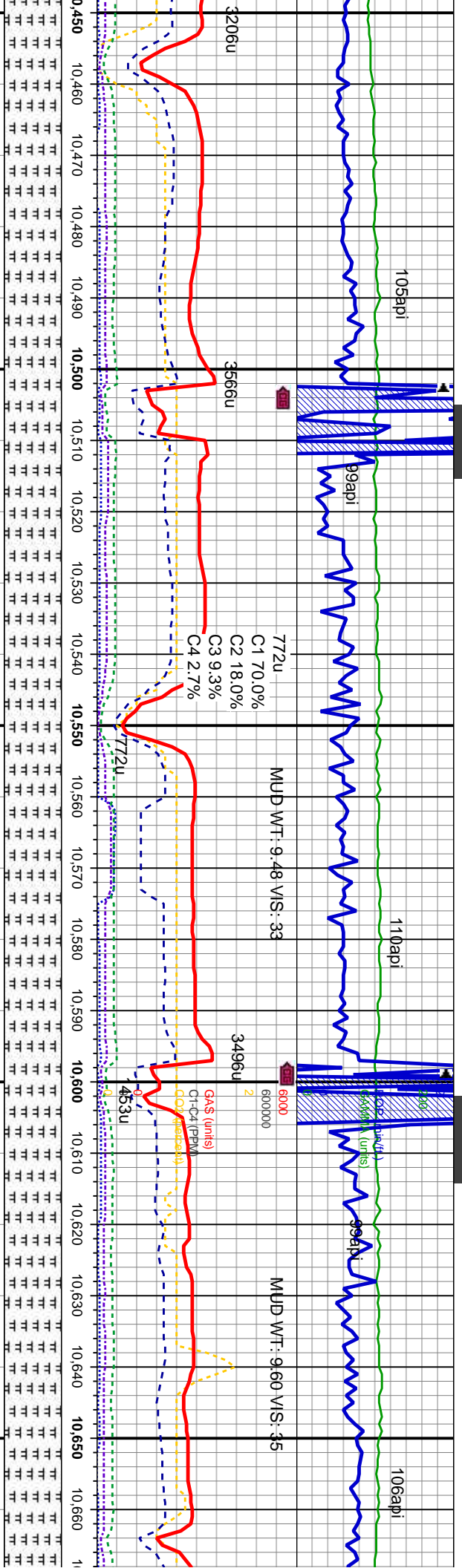
gy, sft, sb blk, rthy, w/ chk, tr diss pyr  
gy-sb wxy lst, mot  
rag, bl mod fast  
brn vis lt ring

MRSLT: dk gy-blk, some med gy, sft, sb blk, rthy, gritty tex, v calc, unc fis, inbdd w/ chk, tr diss pyr, bl mod fast mky cut, fnt pale yel ring, v fnt brn vis lt ring

MRSLT: dk gy-blk, some med gy, sft, sb blk, rthy, gritty tex, v calc, unc fis, inbdd w/ chk, tr diss pyr, bl mod fast mky cut, fnt pale yel ring, v fnt brn vis lt ring

MRSLT: dk gy-blk, some med gy, sft, sb blk, rthy, gritty tex, v calc, unc fis, inbdd w/ chk, tr diss pyr, bl mod fast mky cut, fnt pale yel ring, v fnt brn vis lt ring





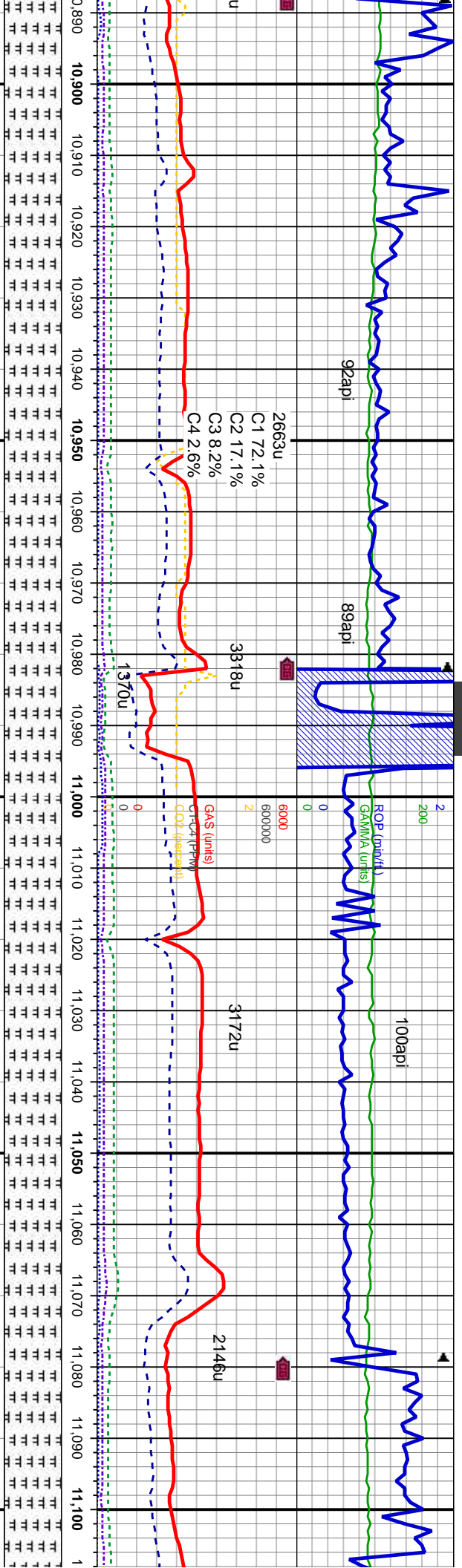
5'	MD: 10,542'	MD: 10,637'
4.37'	TVD: 6,432.5'	TVD: 6,431.34'
91.8 °	Inclination: 90.4 °	Inclination: 91 °
7.6 °	Azimuth: 87.9 °	Azimuth: 88.6 °
42'	VS: 4,174.13'	VS: 4,262.68'

MRSLST: dk gy-blk, some med gy, sft, sb blk, rthy, grtly tex, v calc, unc fis, inbnd wi chk, tr dissim pyr; bl mod fast mky cut, fnt pale yel ring, v fnt brn vis lt ring	MRSLST: dk gy-blk, some med gy, sft, sb blk, rthy, grtly tex, v calc, unc fis, inbnd wi chk, tr dissim pyr; bl mod fast mky cut, fnt pale yel ring, v fnt brn vis lt ring	MRSLST: dk gy-blk, some med gy, sft, sb blk, rthy, grtly tex, v calc, unc fis, inbnd wi chk, tr dissim pyr; bl mod fast mky cut, fnt pale yel ring, v fnt brn vis lt ring
---	---	---









MD: 10,924  
TVD: 6,428.34'  
Inclination: 90 °  
Azimuth: 88.3 °  
VS: 4,529.69'

MD: 11,020  
TVD: 6,427.58'  
Inclination: 90.9 °  
Azimuth: 89.7 °  
VS: 4,618.72'

MRLST: dk gy-blk, some med gy, sft, sb blk, rthy, gritty tex, v calc, unc fis, inbdd wi chk, tr diss pyr, bl mod fast mky cut, fnt pale yel ring, v fnt brn vis lt ring

MRLST: dk gy-blk, some med gy, sft, sb blk, rthy, gritty tex, v calc, unc fis, inbdd wi chk, tr diss pyr, bl mod fast mky cut, fnt pale yel ring, v fnt brn vis lt ring

MRLST: dk gy-blk, some med gy, sft, sb blk, rthy, gritty tex, v calc, unc fis, inbdd wi chk, tr diss pyr, bl mod fast mky cut, fnt pale yel ring, v fnt brn vis lt ring

MRLST: dk gy-blk, some med gy, sft, sb blk, rthy, gritty tex, v calc, unc fis, inbdd wi chk, tr diss pyr, bl mod fast mky cut, fnt pale yel ring, v fnt brn vis lt ring

MRLST: dk gy-blk, some med gy, sft, sb blk, rthy, gritty tex, v calc, unc fis, inbdd wi chk, tr diss pyr, bl mod fast mky cut, fnt pale yel ring, v fnt brn vis lt ring







