



**PATRIOT**  
WELL SOLUTIONS

SCBL / GR / CCL  
Log

Company KERR MCGEE OIL & GAS  
Well HSR-ROEDER 14-7A  
Field WATTENBERG  
County WELD  
State COLORADO  
Country USA

Company KERR MCGEE OIL & GAS  
Well HSR-ROEDER 14-7A  
Field WATTENBERG  
County WELD  
State COLORADO  
Country USA

Location: 778' FSL 1819' FWL  
API #: 05-123-15064  
Other Services  
Permanent Datum SEC 7 TWP 3N RGE 65W  
Log Measured From 4992' Elevation 4992'  
Drilling Measured From KB  
K.B. 5002'  
D.F. N/A  
G.L. 4992'

Date	02-SEP-2021
Run Number	1
Depth Driller	8003'
Depth Logger	4141'
Bottom Logged Interval	4141'
Top Log Interval	SURFACE
Open Hole Size	N/A
Type Fluid	H2O
Density / Viscosity	N/A
Max. Recorded Temp.	N/A
Estimated Cement Top	N/A
Time Well Ready	N/A
Time Logger on Bottom	N/A
Equipment Number	1096
Location	WELD COUNTY
Recorded By	J. KOTT
Witnessed By	

Borehole Record			Tubing Record				
Run Number	Bit	From	To	Size	Weight	From	To


Casing Record	Size	Mgt/Ft	Top	Bottom
Surface String	8 5/8"	24 #/FT	SURFACE	620'
Prot. String				
Production String	4 1/2"	11.6 #/FT	SURFACE	7521'
Liner				

<<< Fold Here >>>

All interpretations are opinions based on inferences from electrical or other measurements and we cannot and do not guarantee the accuracy or correctness of any interpretation, and we shall not, except in the case of gross or willful negligence on our part, be liable or responsible for any loss, costs, damages, or expenses incurred or sustained by anyone resulting from any interpretation made by any of our officers, agents or employees. These interpretations are also subject to our general terms and conditions set out in our current Price Schedule.

Comments

LOG CORRELATED TO KB  
INTERMITTENT CYCLE SKIPPING  
LOGGING TOOL ERROR

Sensor	Offset (ft)	Schematic	Description	Length (ft)	O.D. (in)	Weight (lb)
			Cable_Head-1_7/16 Titan 1 7/16" Cable Head	1.02	1.44	3.31

			Centralizers-8071-275-200 Tekco 2 3/4" Adjustable Centralizer	2.73	2.75	25.00
WVFCAL	16.00					
WVFS8	13.58					
WVFS7	13.58		SCBLTEKSECT-275 No Temp (111) TekCo 2 3/4" 400 Deg F Sector Tool with No Temperature	9.13	2.75	102.00
WVFS6	13.58					
WVFS5	13.58					
WVFS4	13.58					
WVFS3	13.58					
WVFS2	13.58					
WVFS1	13.58					
WVF3FT	12.83					
WVF5FT	11.83					
WVFSYNC	8.50					
			Centralizers-8071-275-200 Tekco 2 3/4" Adjustable Centralizer	2.73	2.75	25.00
CCL	4.62		CCL-275tekco (111) Tekco 2 3/4" 450 Deg. F Rare Earth Magnets	1.83	2.75	33.00
			GR-Tek-Co 2 3/4 (0111) Tekco 2 3/4" 400 Deg. F Logging Gamma Ray	3.67	2.75	40.00
GR	1.31					
			Bull_Plug-1_7/16_GO Titan 1 7/16" Female Bull Plug	0.27	1.44	1.00

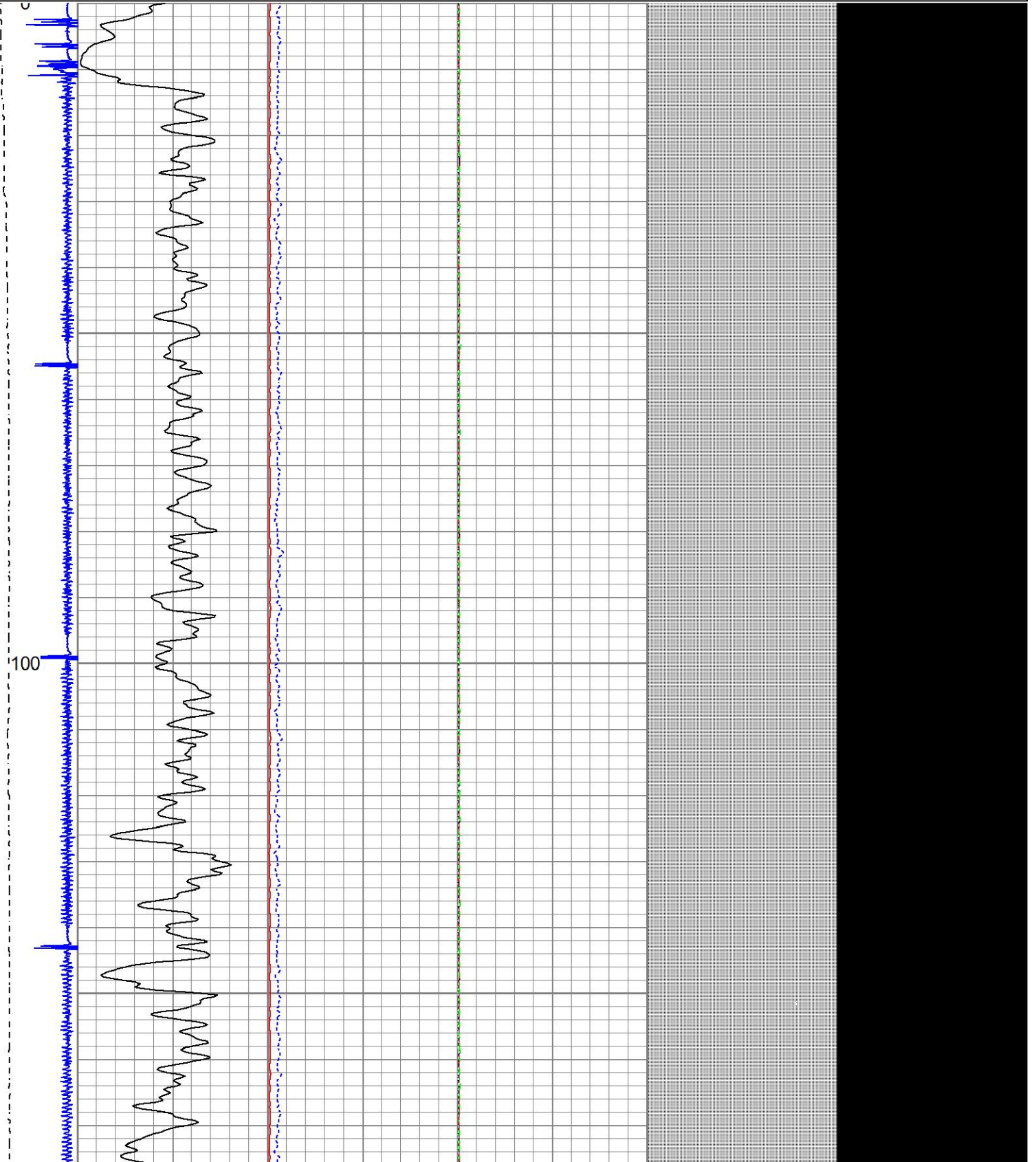
Dataset: oxy\_roeder\_14-7a.db: field/well/run8/pass18  
Total length: 21.37 ft  
Total weight: 229.31 lb  
O.D.: 2.75 in

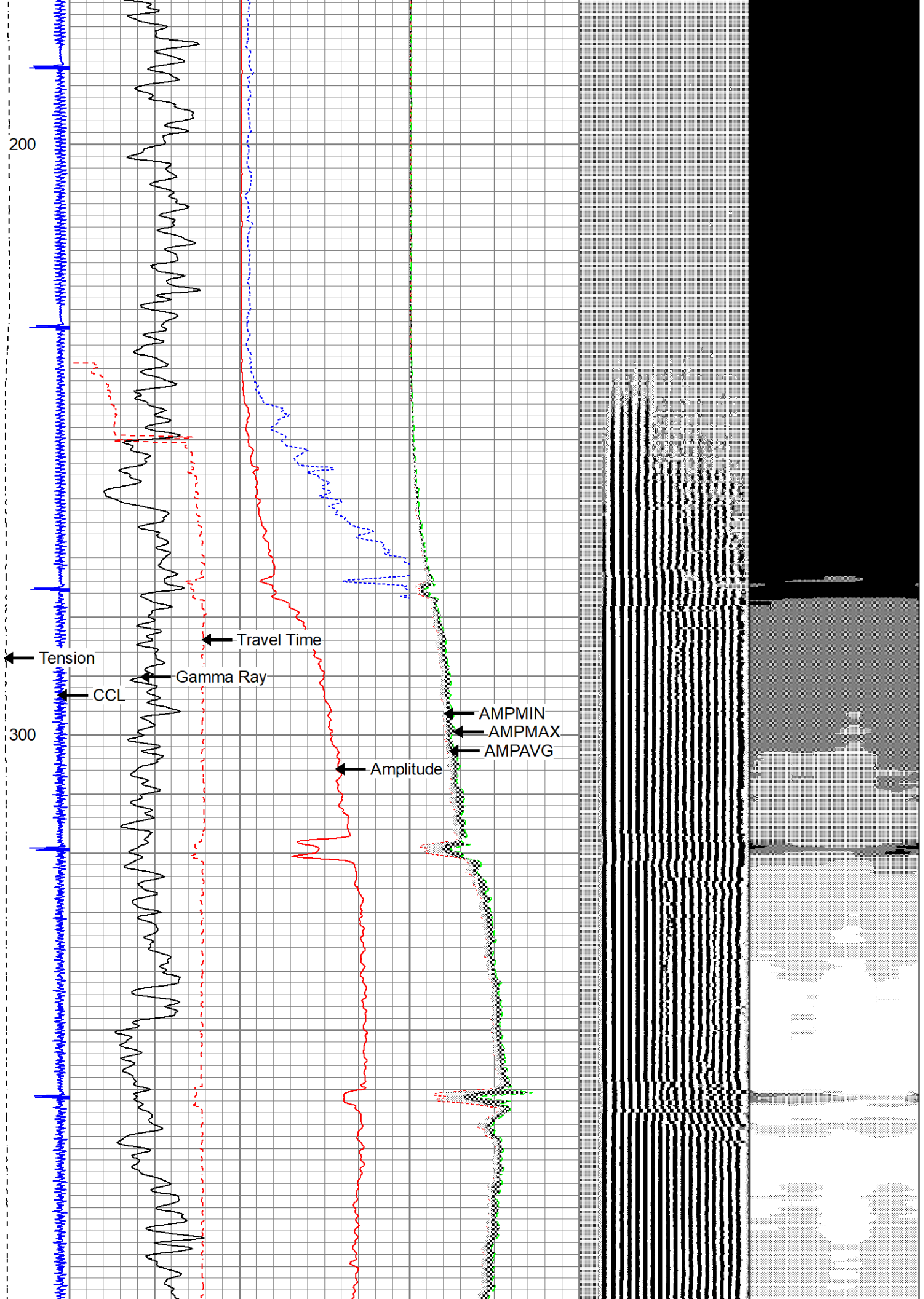


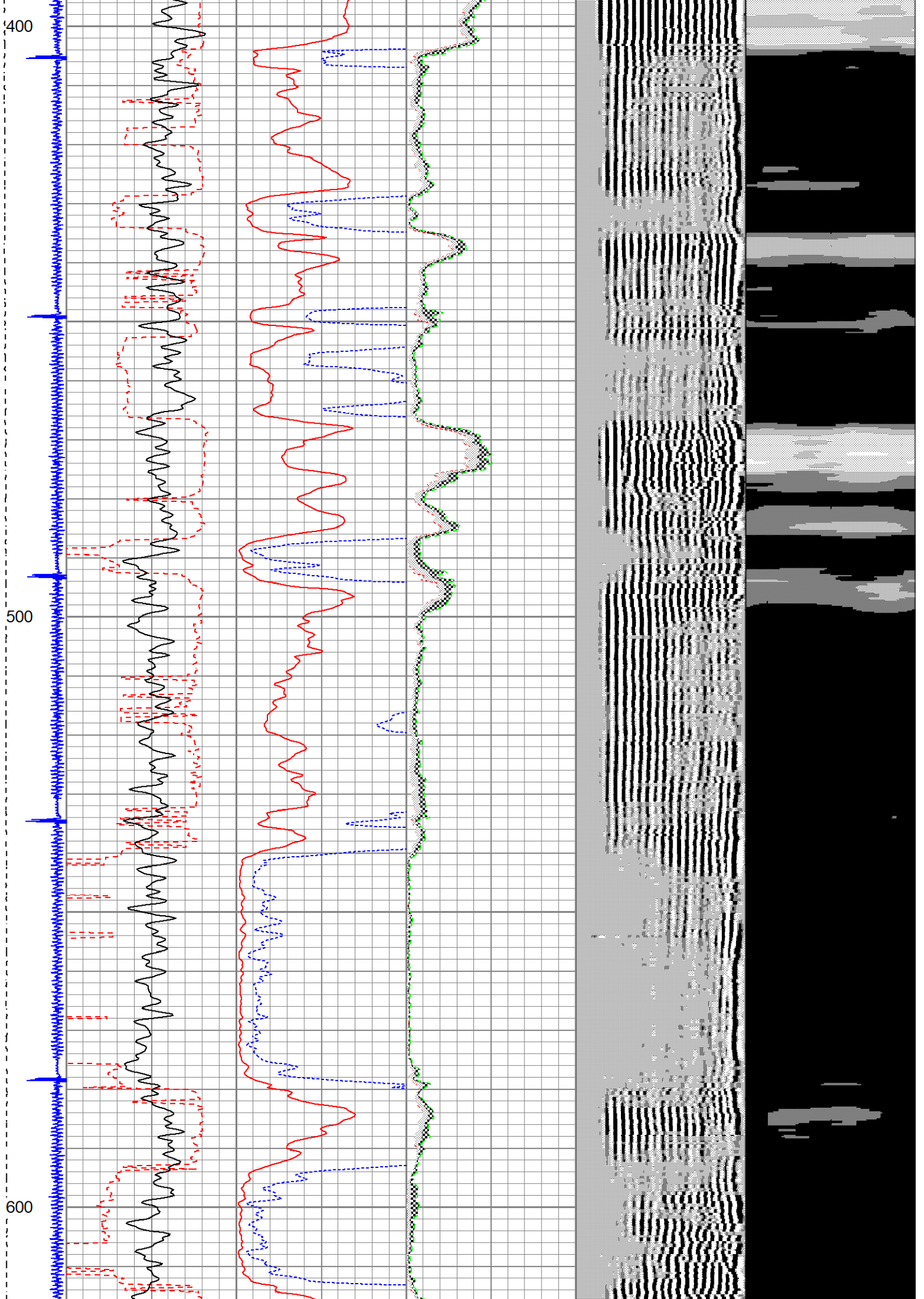
# MAIN PASS

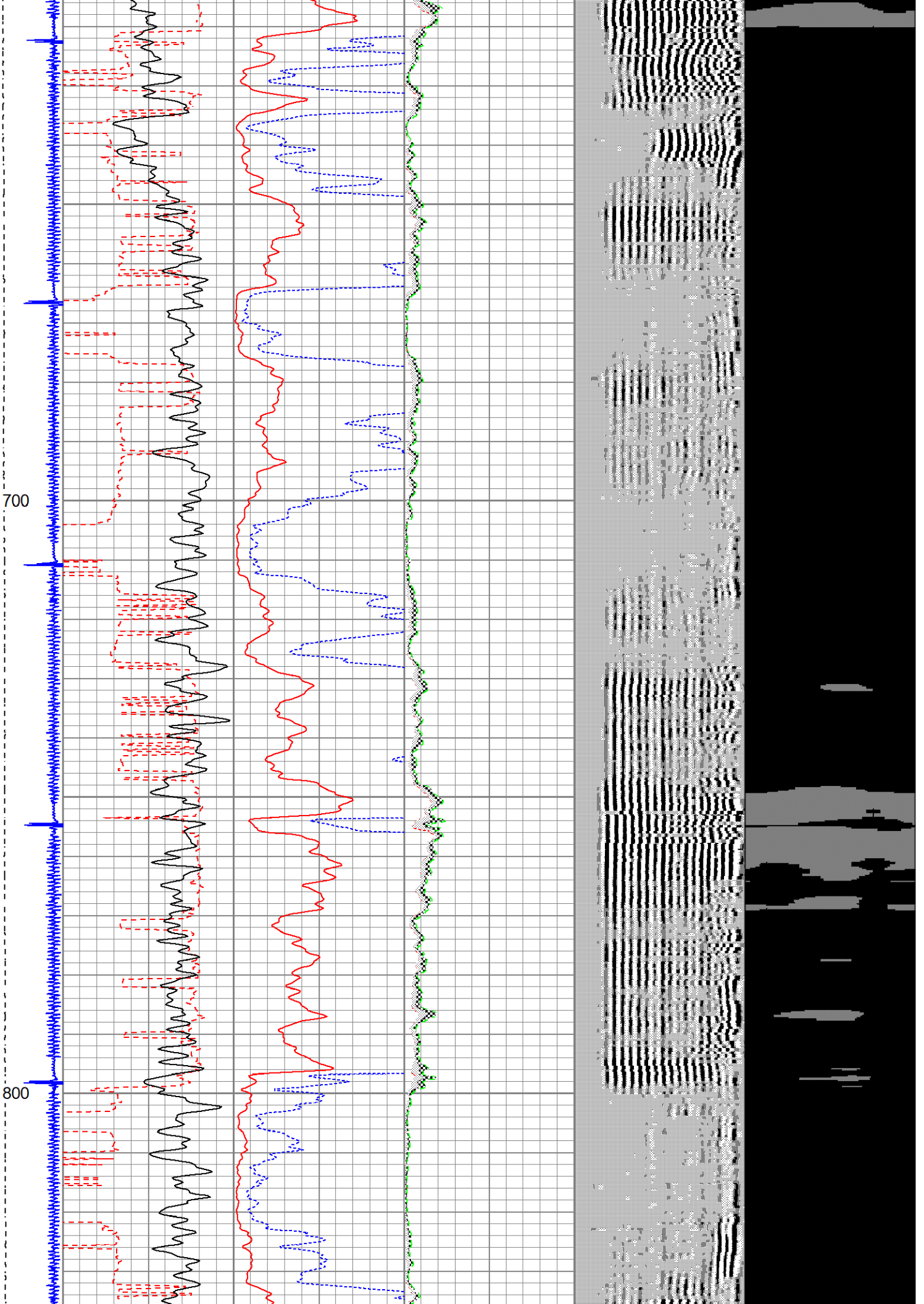
Database File oxy\_roeder\_14-7a.db  
 Dataset Pathname run8/pass18  
 Presentation Format scbl  
 Dataset Creation Thu Sep 02 11:23:37 2021  
 Charted by Depth in Feet scaled 1:240

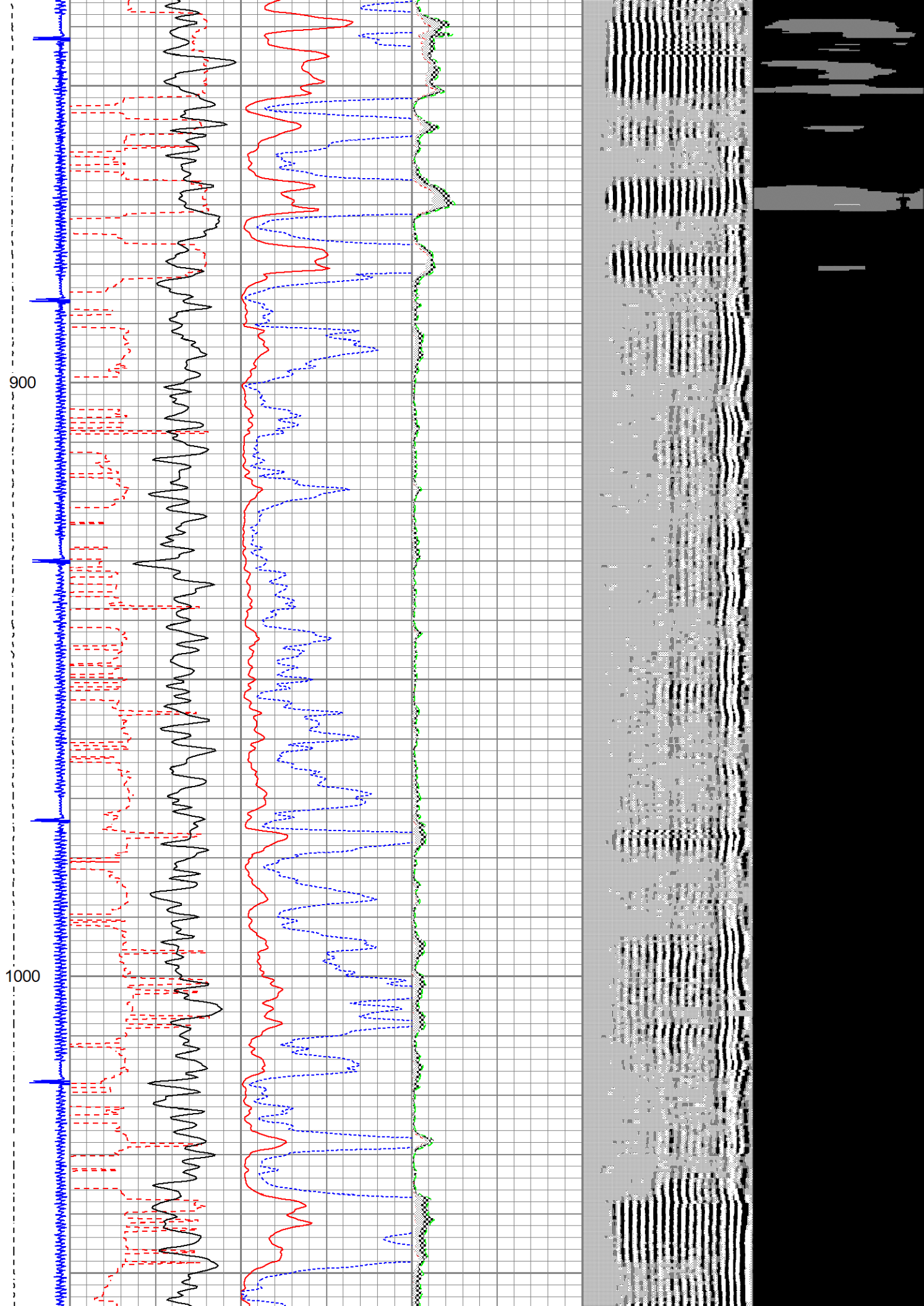
-9 CCL 1	Travel Time	0	Amplitude (mV)100	-1	AMPAVG	150	200	VDL (usec) 1200	1	RADIAL MAP	8
Tension	300 (usec)	200	Amplified Amplitude	-1	AMPMAX	150					
0 (lb1000)	Gamma Ray	0	(mV) 20	-1	AMPMIN	150					
	0 (GAPI)	150									

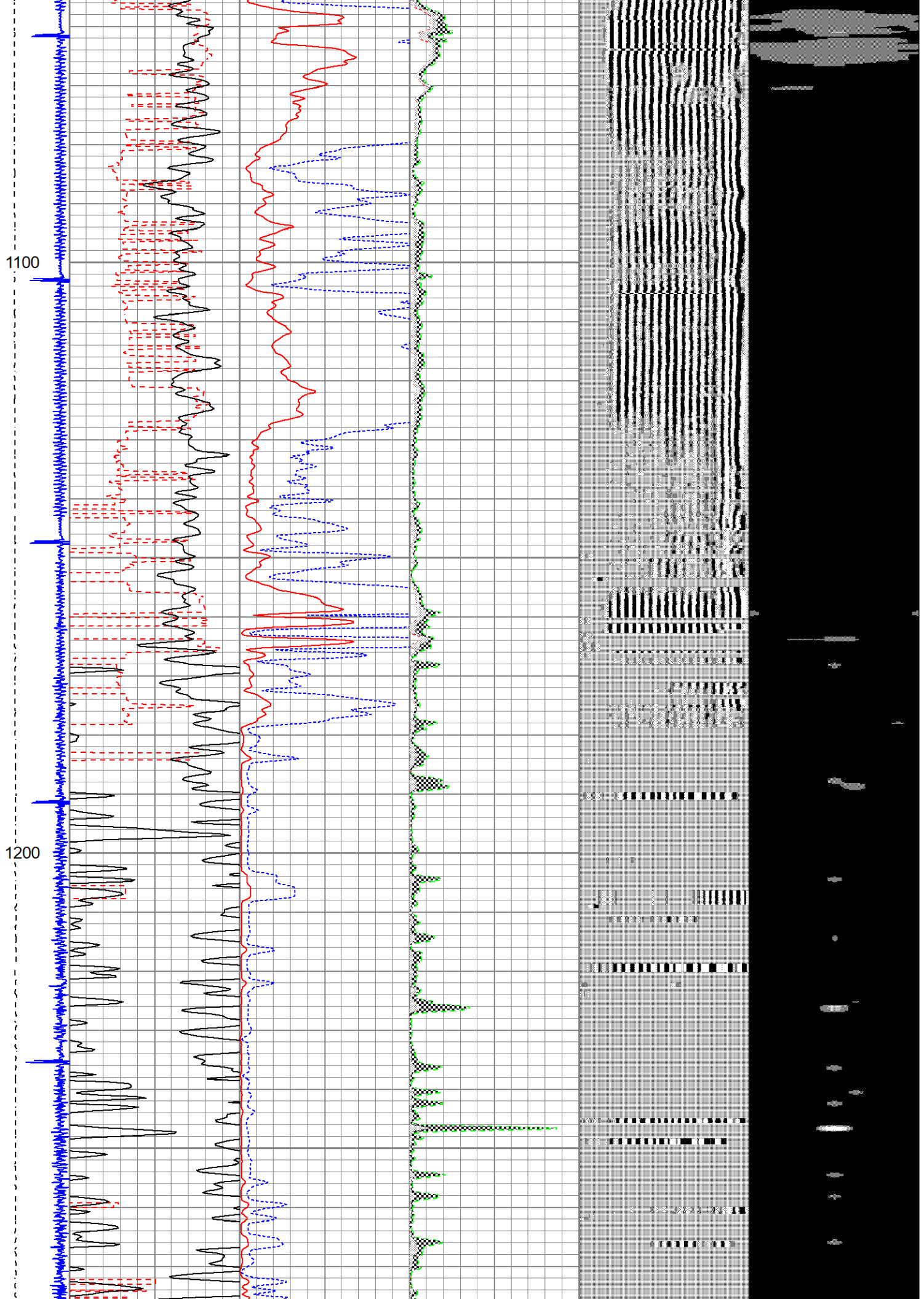






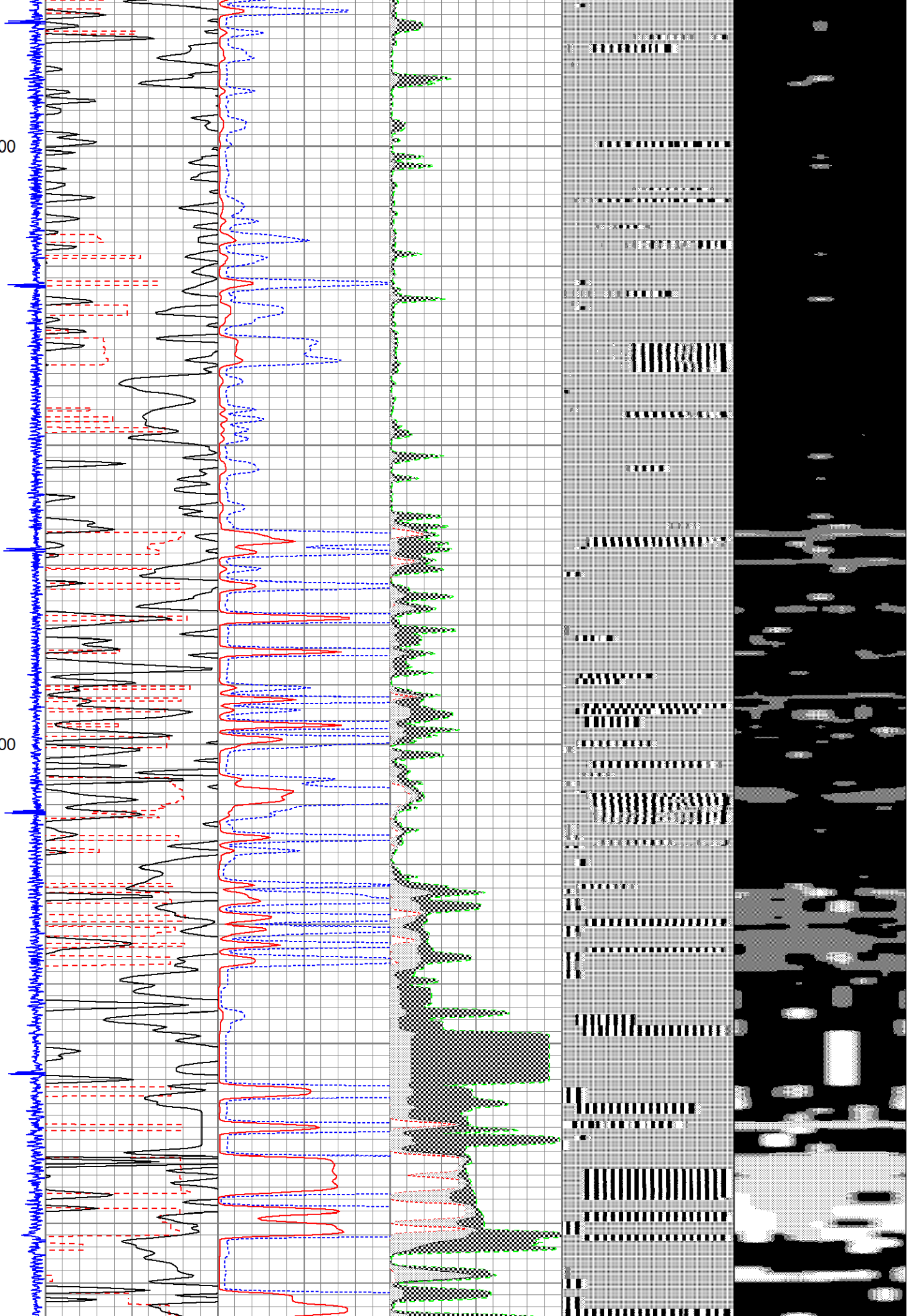


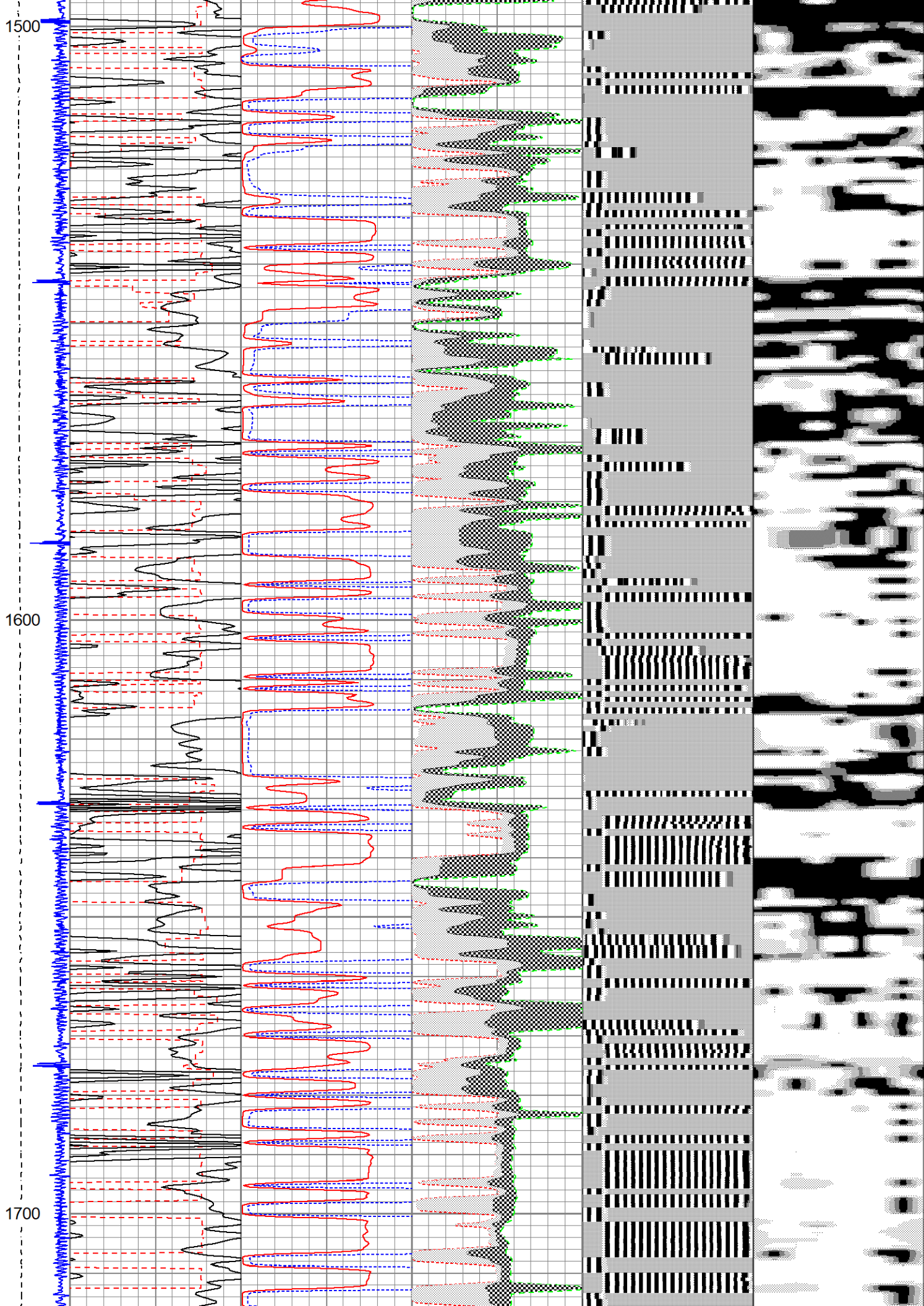


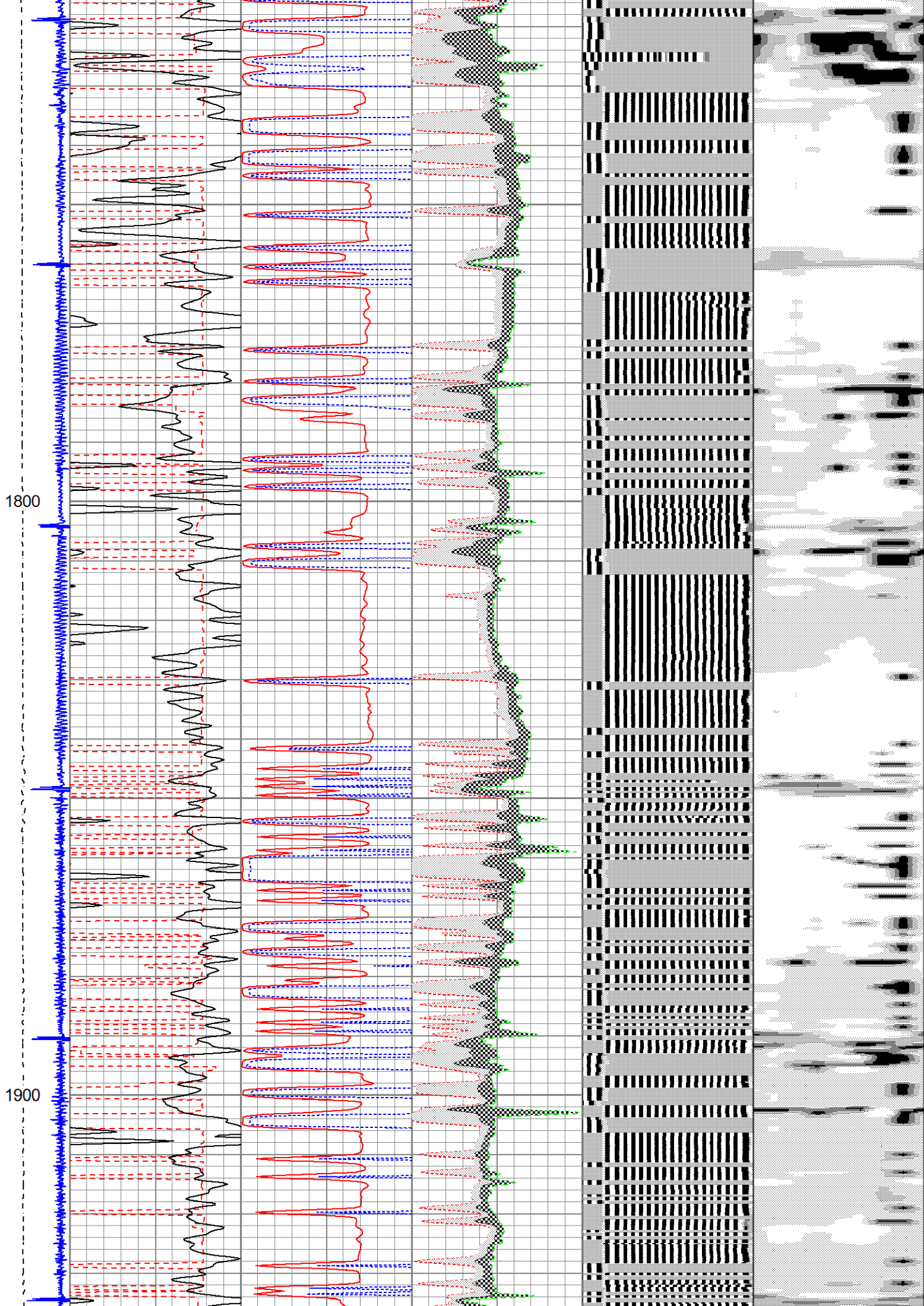


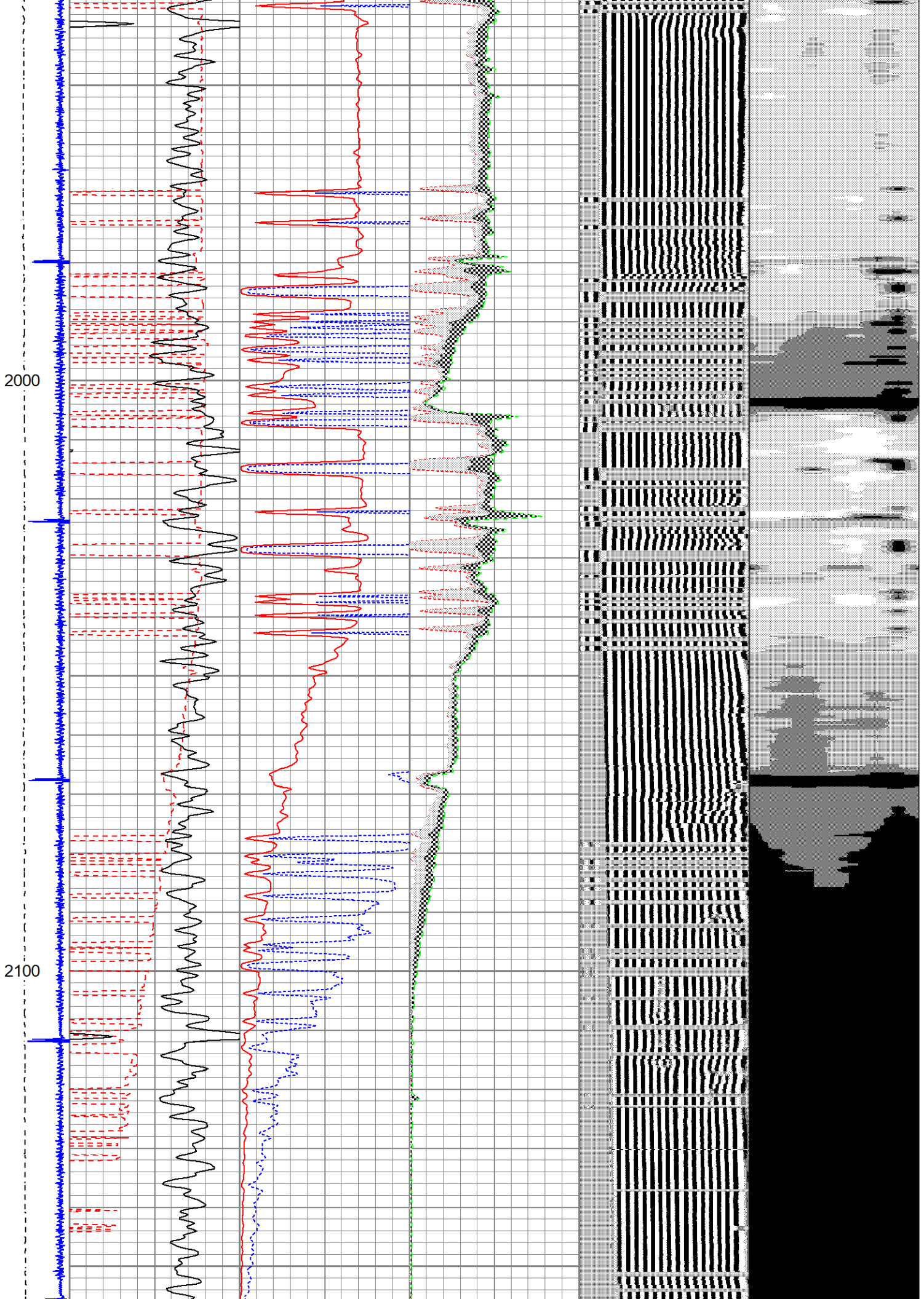
1300

1400



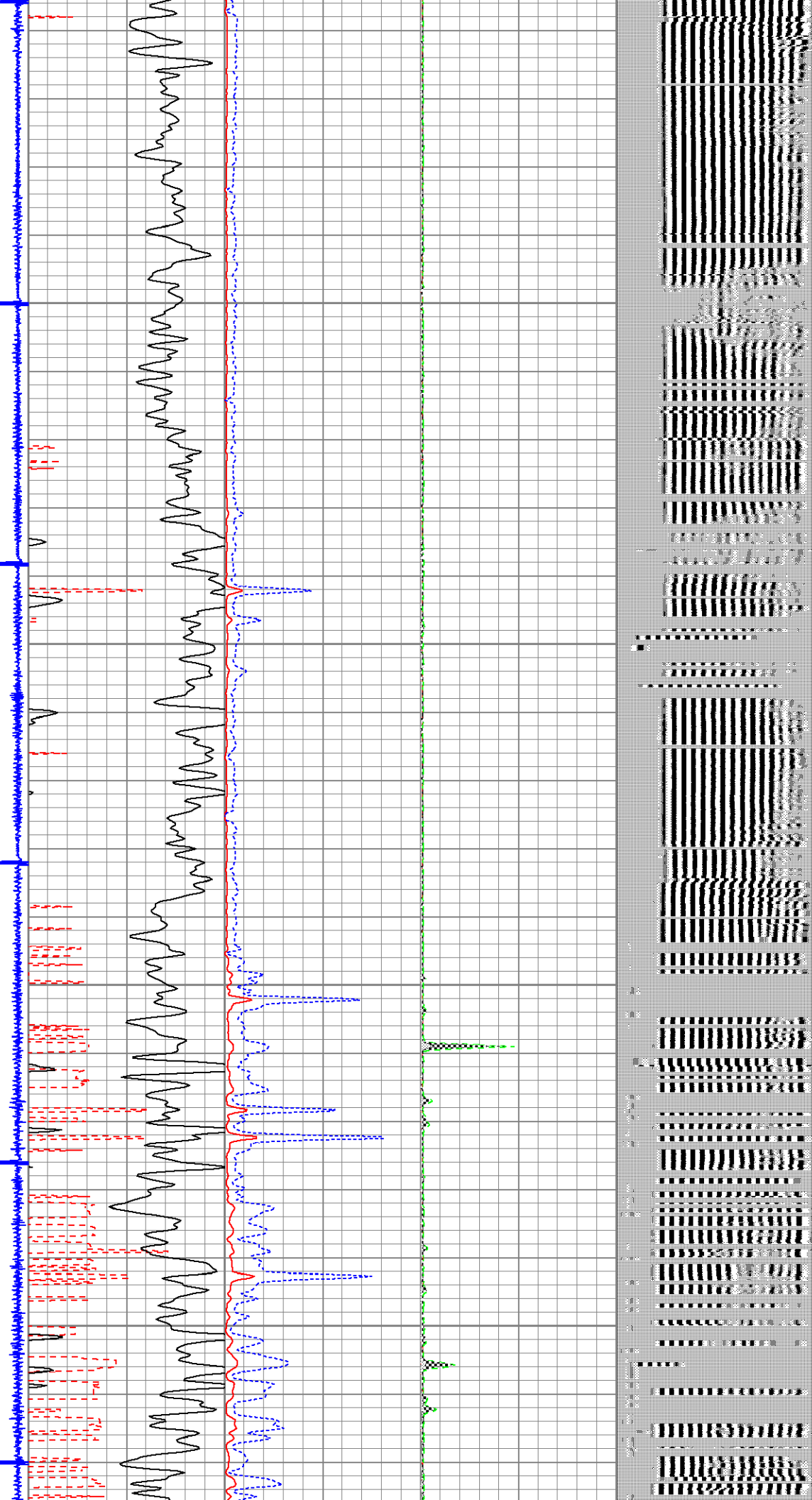






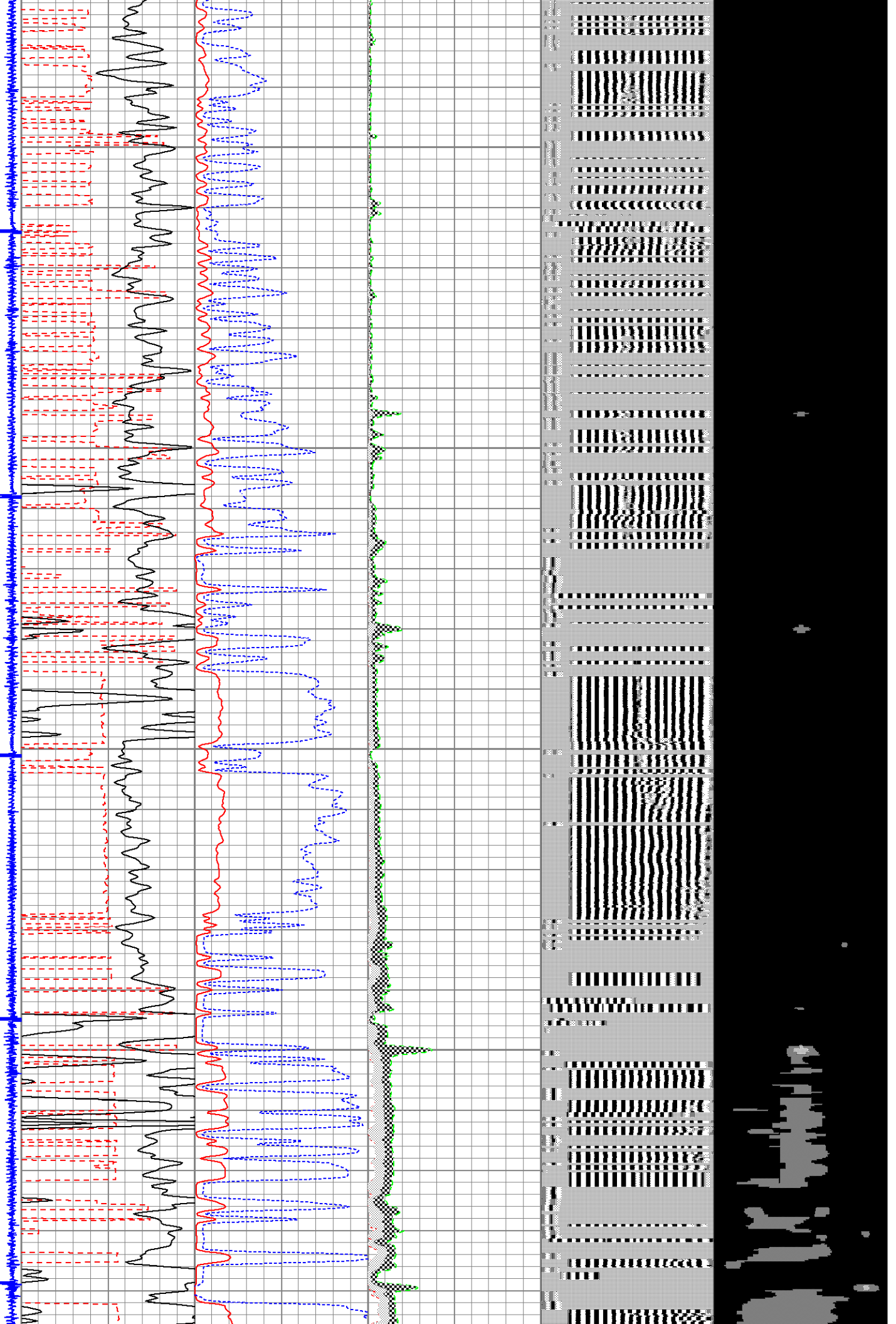
2200

2300



2400

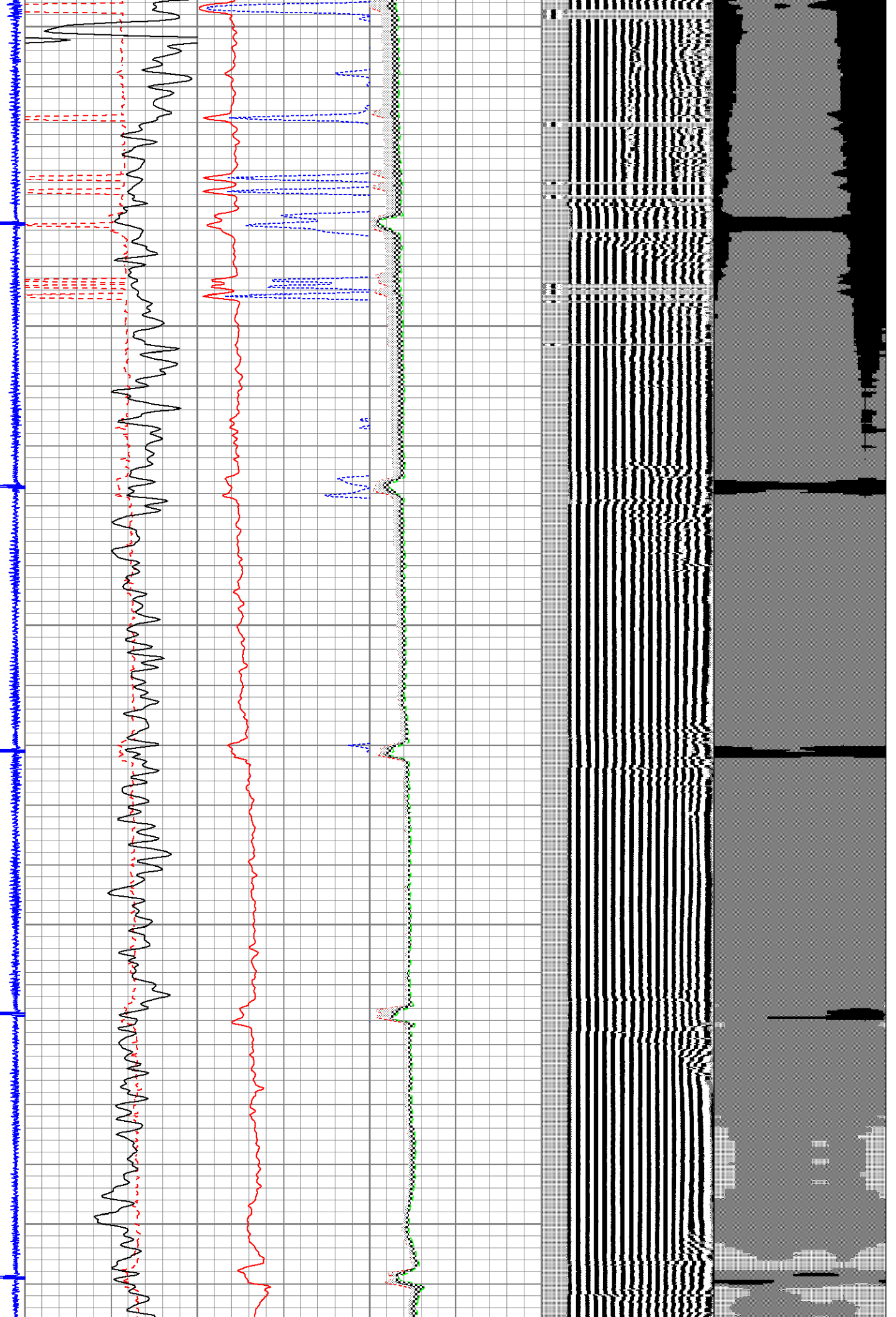
2500

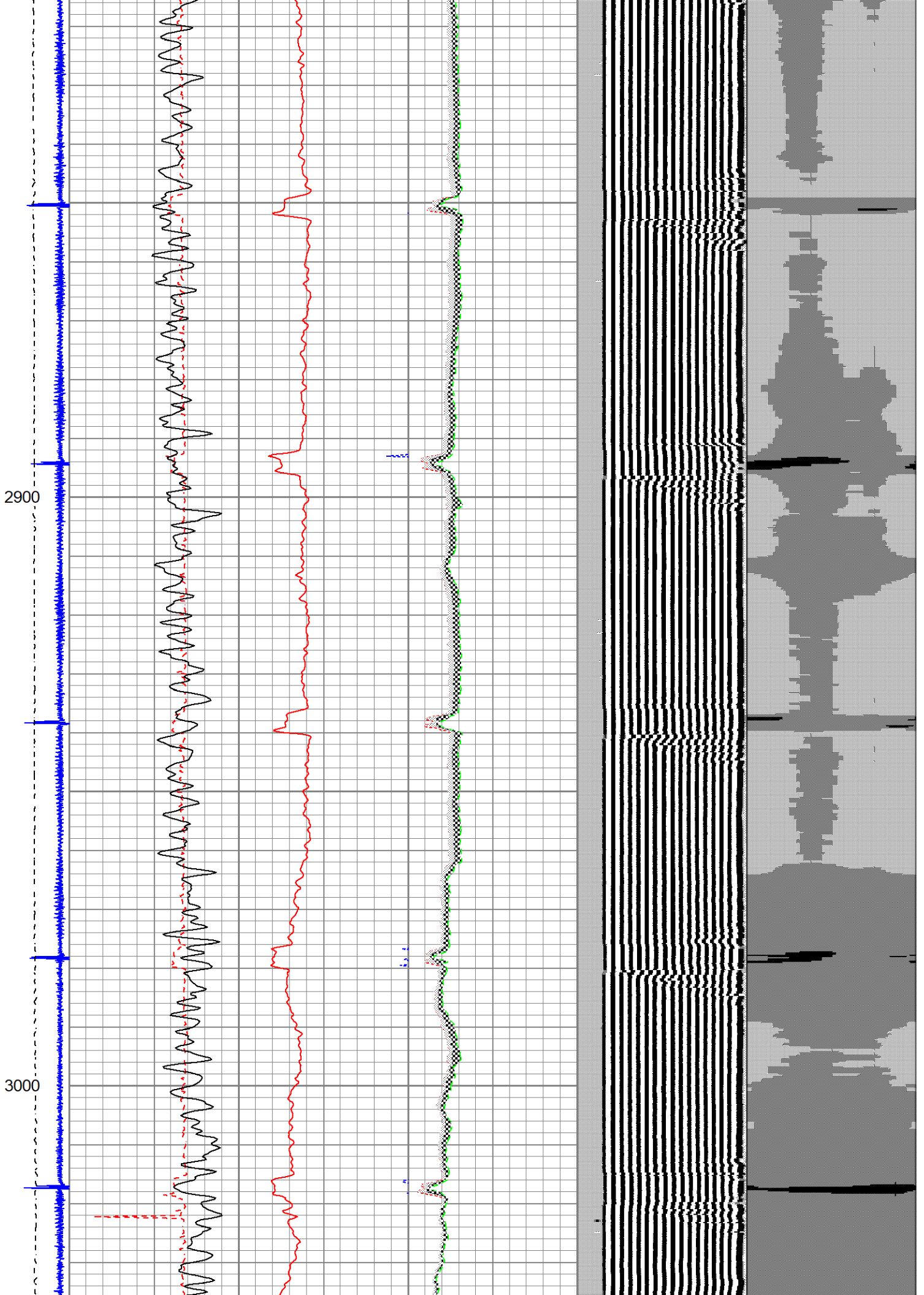


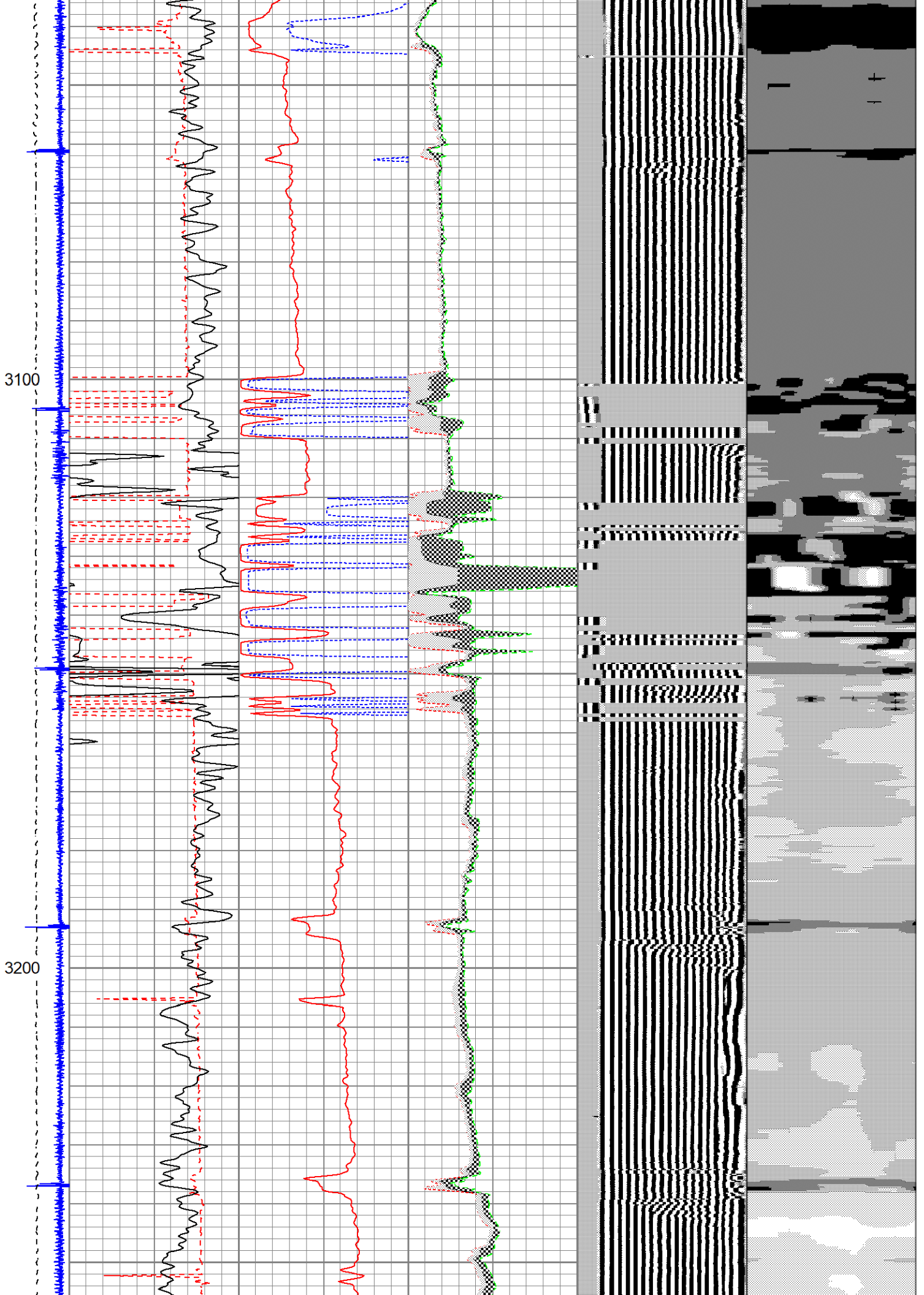
2600

2700

2800

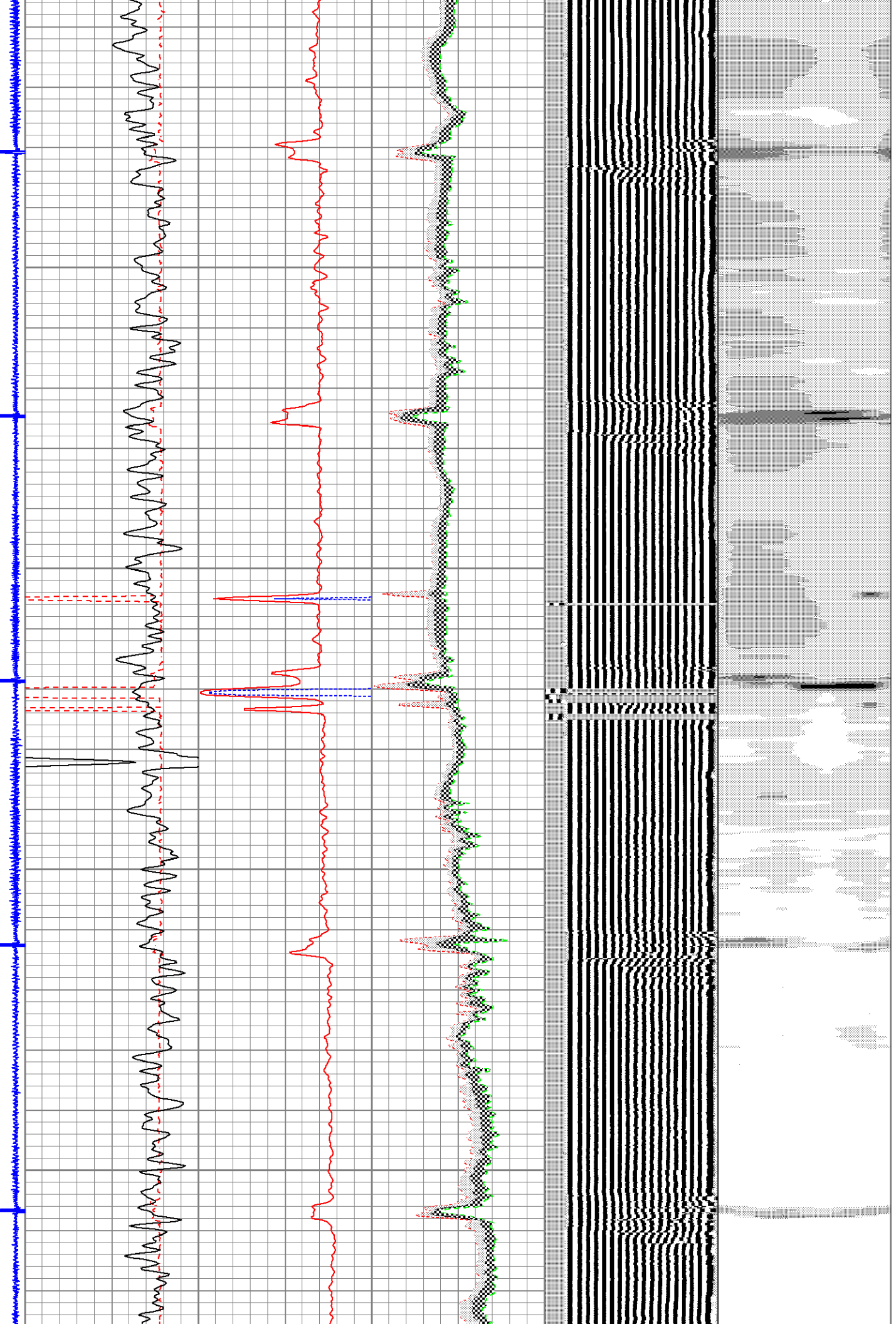






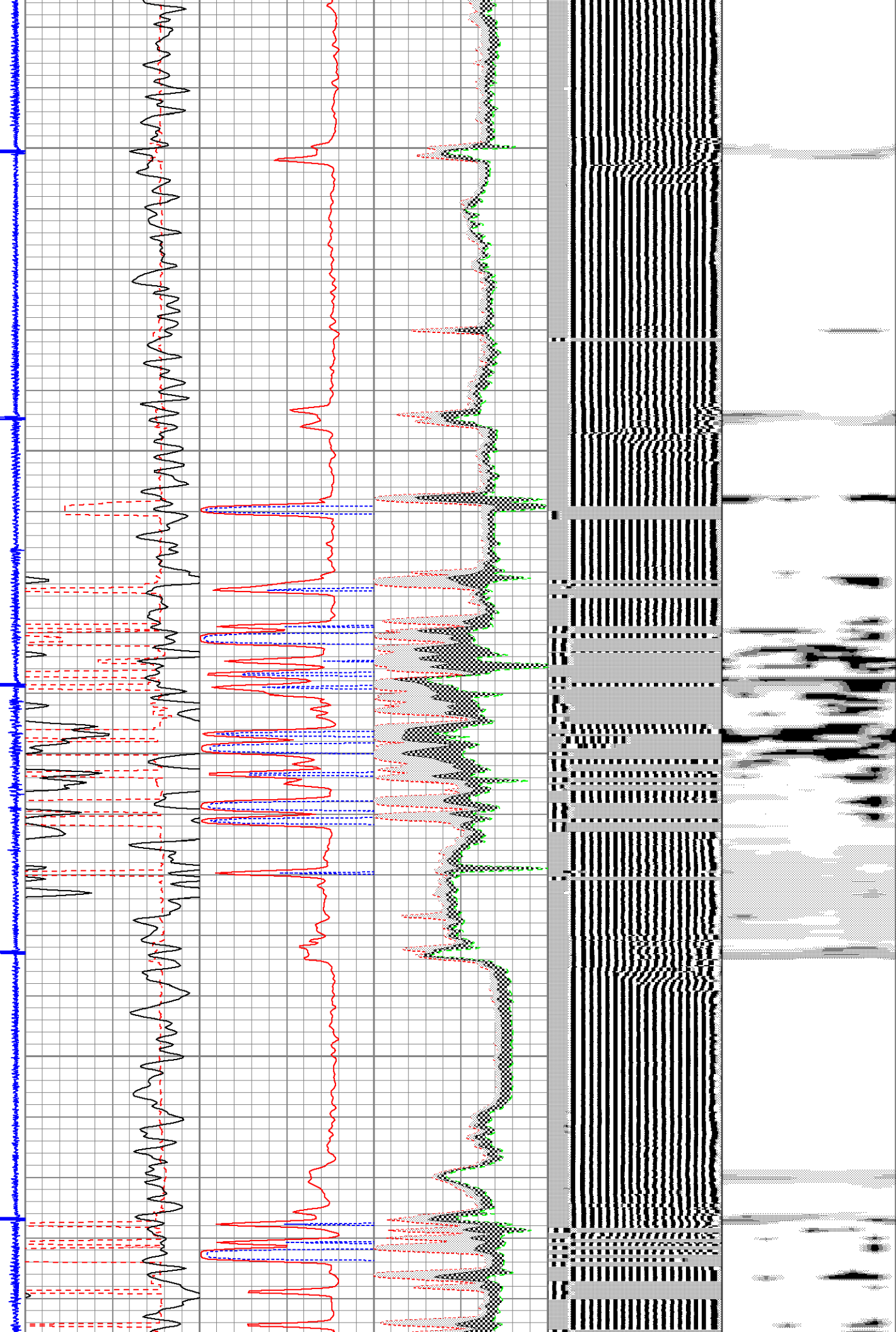
3300

3400



3500

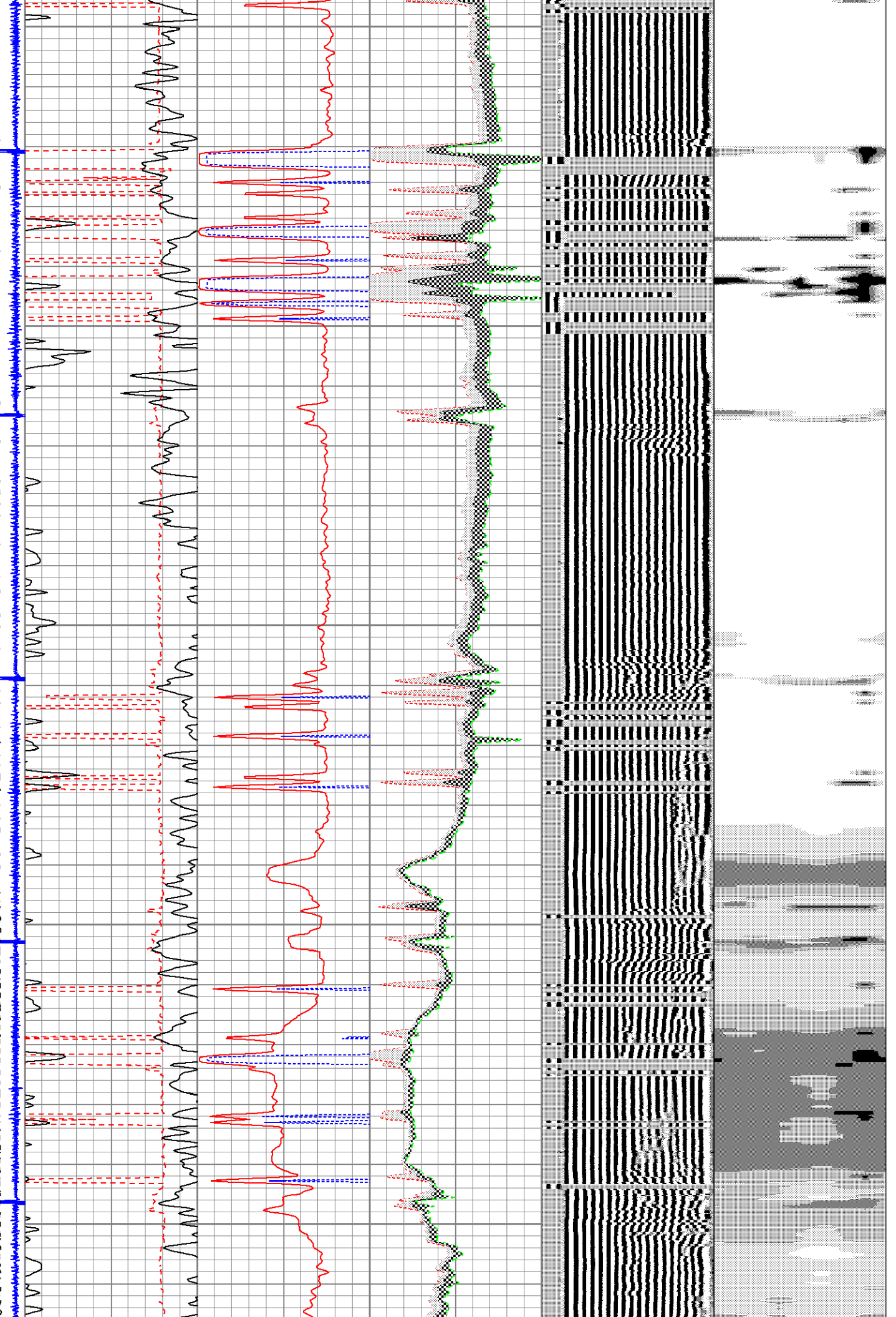
3600

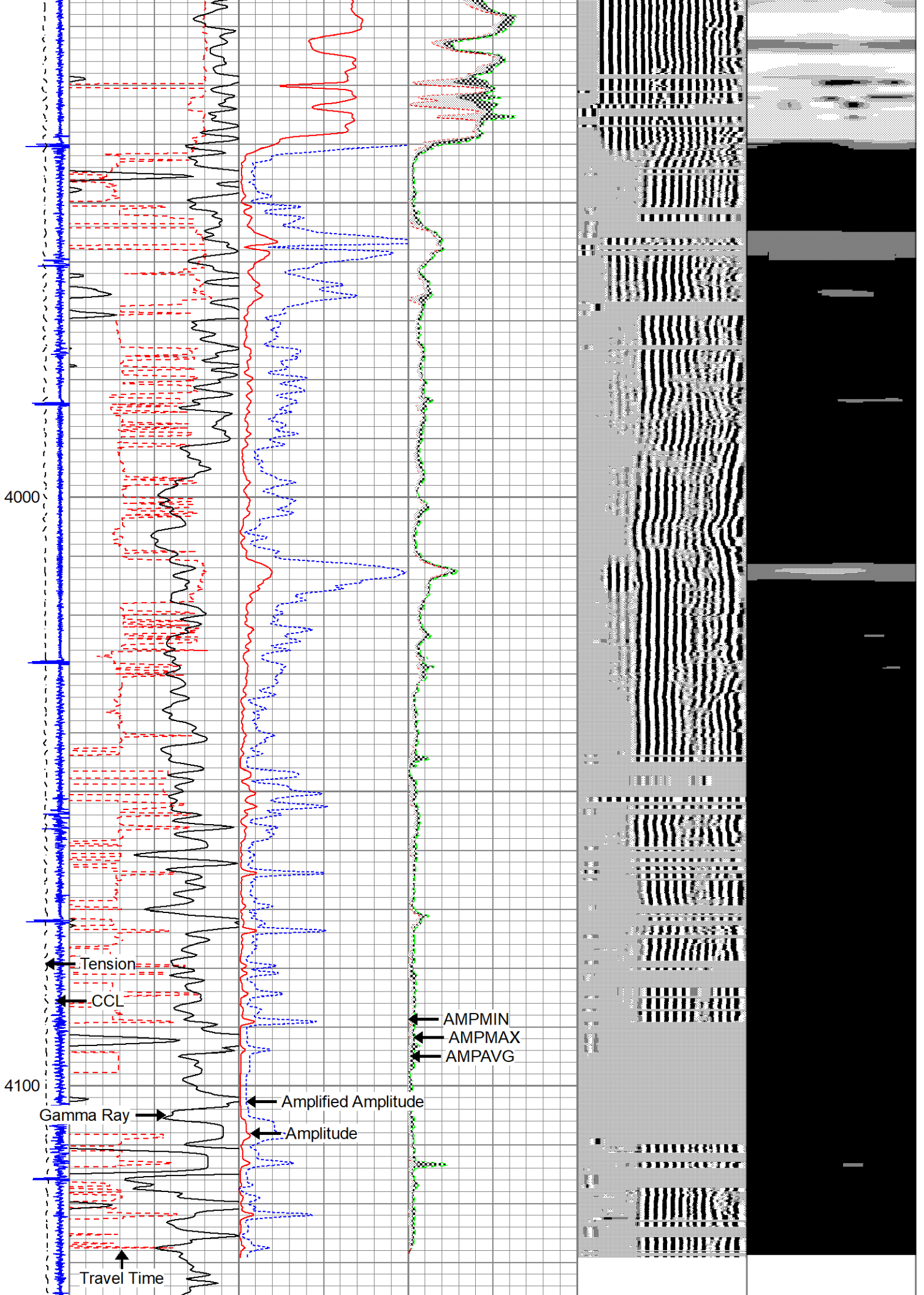


3700

3800

3900





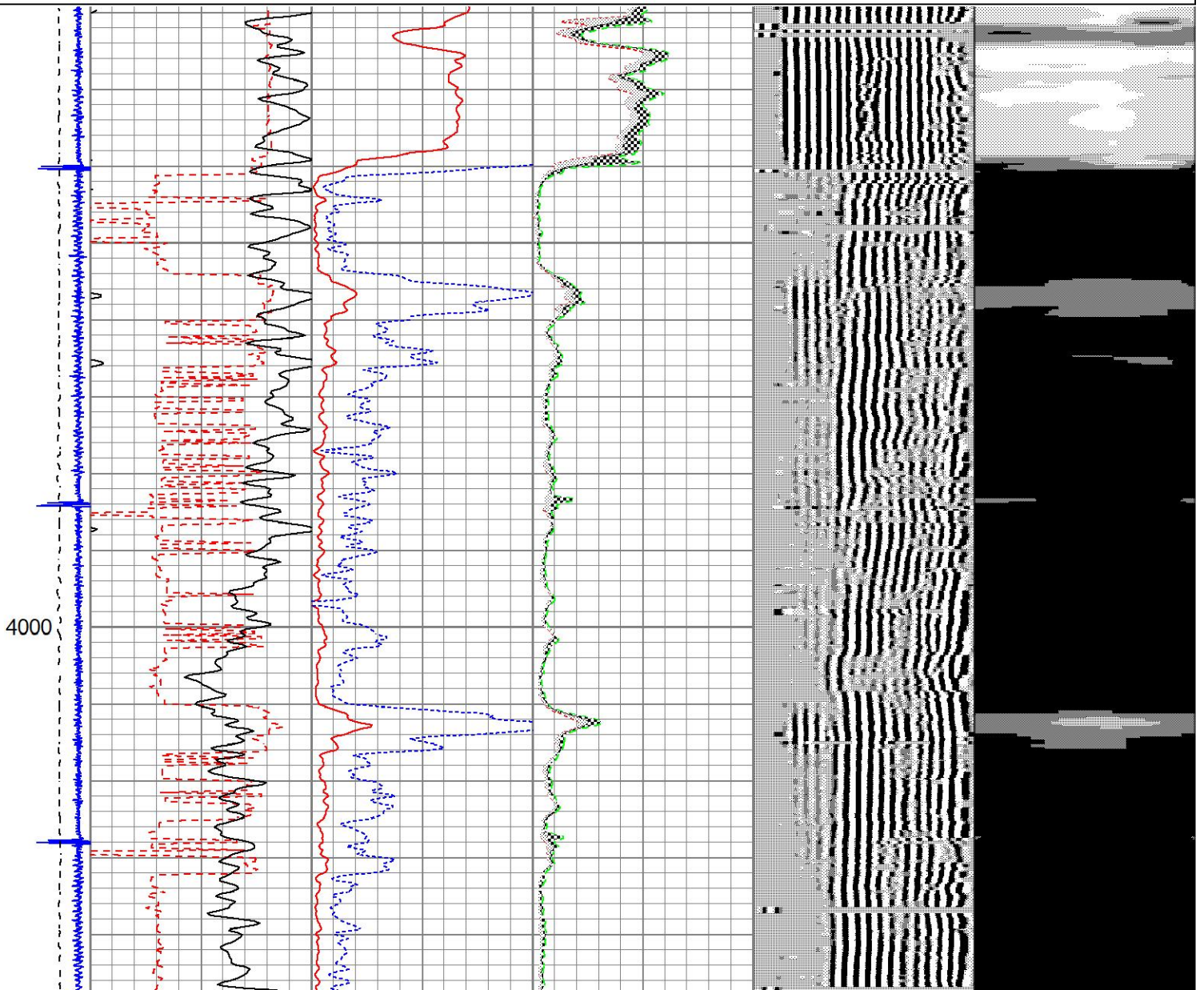
-9	CCL	1	Travel Time	0	Amplitude (mV)	100	-1	AMPAVG	150	200	VDL (usec)	1200	1	RADIAL MAP	8
	Tension	300	(usec)	200	Amplified Amplitude		-1	AMPMAX	150						
0	(lb1000)		Gamma Ray	0	(mV)	20	-1	AMPMIN	150						
		0	(GAPI)	150											

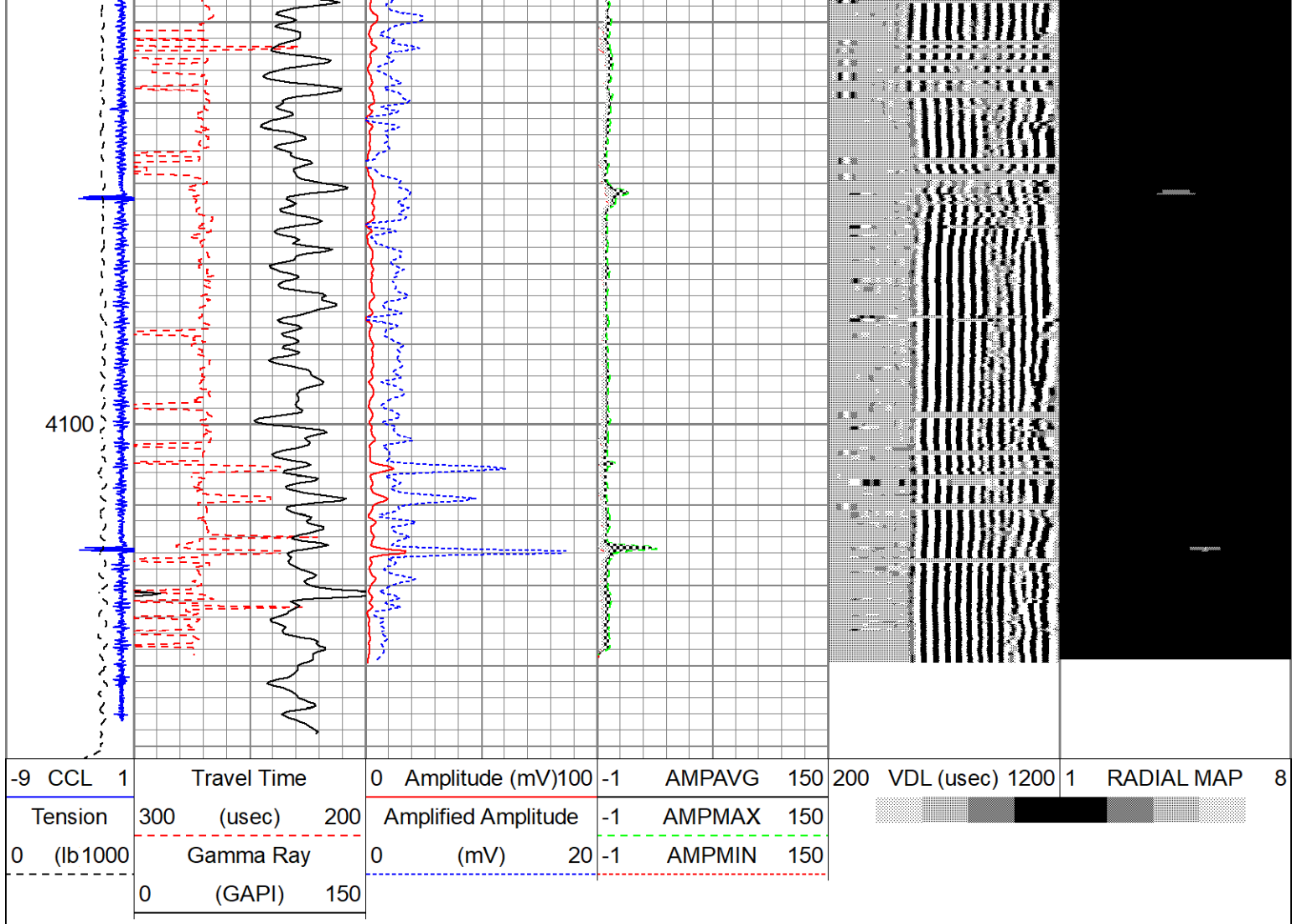


# REPEAT PASS

Database File oxy\_roeder\_14-7a.db  
 Dataset Pathname run8/pass16  
 Presentation Format scbl  
 Dataset Creation Thu Sep 02 11:14:59 2021  
 Charted by Depth in Feet scaled 1:240

-9	CCL	1	Travel Time	0	Amplitude (mV)	100	-1	AMPAVG	150	200	VDL (usec)	1200	1	RADIAL MAP	8
	Tension	300	(usec)	200	Amplified Amplitude		-1	AMPMAX	150						
0	(lb1000)		Gamma Ray	0	(mV)	20	-1	AMPMIN	150						
		0	(GAPI)	150											





Calibration Report

Database File oxy\_roeder\_14-7a.db  
 Dataset Pathname run8/pass18  
 Dataset Creation Thu Sep 02 11:23:37 2021

Gamma Ray Calibration Report

Serial Number: 0111  
 Tool Model: Tek-Co 2 3/4  
 Performed: Thu Apr 18 09:37:49 2013

Calibrator Value: 1.0 GAPI  
 Background Reading: 0.0 cps  
 Calibrator Reading: 1.0 cps

Sensitivity: 1.0000 GAPI/cps

Segmented Cement Bond Log Calibration Report

Serial Number: 111  
 Tool Model: 275 No Temp

Calibration Casing Diameter: 4.500 in  
 Calibration Depth: 2384.347 ft

Master Calibration, performed Thu Sep 2 10:53:13 2021:

Raw (v)

Calibrated (mv)

Results

	Zero	Cal	Zero	Cal	Gain	Offset
3'	0.000	2.499	1.000	81.196	32.094	1.000
CAL	0.000	0.870				
5'	0.000	2.499	1.000	81.196	32.094	1.000
SUM						
S1	0.000	1.347	0.000	100.000	74.255	0.000
S2	0.000	1.375	0.000	100.000	72.709	0.000
S3	0.000	1.400	0.000	100.000	71.406	0.000
S4	0.000	1.404	0.000	100.000	71.247	0.000
S5	0.000	1.231	0.000	100.000	81.267	0.000
S6	0.000	1.176	0.000	100.000	85.037	0.000
S7	0.000	1.238	0.000	100.000	80.760	0.000
S8	0.000	1.273	0.000	100.000	78.556	0.000

Internal Reference Calibration, performed (Not Performed):

	Raw (v)		Calibrated (v)		Results	
	Zero	Cal	Zero	Cal	Gain	Offset
CAL	0.000	0.000	0.000	0.870	1.000	0.000

Air Zero Calibration, performed Thu Sep 2 09:54:16 2021:

	Raw (v)		Calibrated (v)		Results	
	Zero		Zero		Gain	Offset
3'	0.000		0.000			0.000
5'	0.000		0.000			0.000
SUM						
S1	0.000		0.000			0.000
S2	0.000		0.000			0.000
S3	0.000		0.000			0.000
S4	0.000		0.000			0.000
S5	0.000		0.000			0.000
S6	0.000		0.000			0.000
S7	0.000		0.000			0.000
S8	0.000		0.000			0.000



Company	KERR MCGEE OIL & GAS		
Well	HSR-ROEDER 14-7A		
Field	WATTENBERG		
County	WELD		
State	COLORADO	Country	USA