

# Inspection Photos

10/25/2021

Operator: TEP ROCKY MOUNTAIN LLC #  
96850

Location ID: 452011  
Garfield County, CO

Aaron Trujillo  
NW Reclamation Specialist  
COGCC

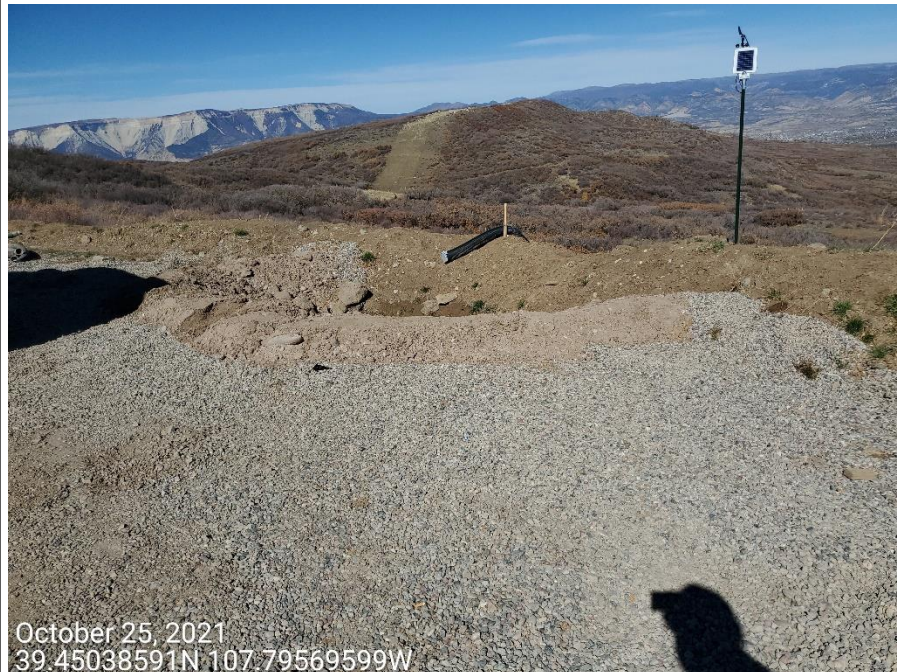
Inspection Photos  
Operator Name: TEP ROCKY MOUNTAIN LLC # 96850  
Location ID: 452011



**Photo 1:** Photos taken from the western corner of the Location. Photos provide an overview of the Location from northeast to southeast. Completion operations observed “in process” during inspection.



Inspection Photos  
Operator Name: TEP ROCKY MOUNTAIN LLC # 96850  
Location ID: 452011



**Photo 2:** Photos provide example of the sediment traps observed on the northern and perimeter of the working pad area. Photos show control measures have not been installed or maintained in proper functioning condition; a berm has been installed at the inlet rendering the traps inoperable.



Inspection Photos  
Operator Name: TEP ROCKY MOUNTAIN LLC # 96850  
Location ID: 452011



**Photo 3:** Photos provide examples showing control measures to protect and stabilize the cut (photo left) and fill (photo right) slopes are missing or insufficient.



Inspection Photos  
Operator Name: TEP ROCKY MOUNTAIN LLC # 96850  
Location ID: 452011



October 25, 2021  
39.4508091N 107.79795513W

**Photo 3.a:** Photo shows control measures to protect and stabilize the cut slopes along the access road are missing or insufficient.



Inspection Photos  
Operator Name: TEP ROCKY MOUNTAIN LLC # 96850  
Location ID: 452011



**Photo 4:** Photos taken from the sediment trap at the Location entrance (west end of the Location). Control has not been constructed with and appropriate inlet/outlet per good engineering practices; geotextile lining not observed; erosion degradation under/around rip-rap material evident (photo right); offsite erosion degradation and sediment transport observed below outlet.



Inspection Photos  
Operator Name: TEP ROCKY MOUNTAIN LLC # 96850  
Location ID: 452011



**Photo 5:** Photos taken from the sediment trap on the east end of the Location. Control has not been constructed with and appropriate inlet/outlet per good engineering practices; geotextile lining not observed; erosion degradation under/around rip-rap material evident (photo right); offsite erosion degradation and sediment transport observed below outlet.



Inspection Photos  
Operator Name: TEP ROCKY MOUNTAIN LLC # 96850  
Location ID: 452011



**Photo 6.** Continued from photo 5. Photo shows stormwater erosion degradation and offsite sediment transport below the sediment trap outlet.



Inspection Photos  
Operator Name: TEP ROCKY MOUNTAIN LLC # 96850  
Location ID: 452011



**Photo 7:** Continue from photo 5. Photo shows the to “inlets” at the sediment trap; inlets have not been installed in accordance with good endangering practices, or maintained in proper functioning condition.



Inspection Photos  
Operator Name: TEP ROCKY MOUNTAIN LLC # 96850  
Location ID: 452011



**Photo 8:** Photos provide examples of the single straw wattle erosion log installed along the perimeter of the Location, and at the toe of the fill slopes. Wattle alone inadequate to properly manage runoff from the entire Location, and to allow for sediment laden-free stormwater discharge; wattle observed to be in disrepair along several sections, resulting in offsite sediment discharge, as well as contamination and erosion degradation at the topsoil stockpiles.



Inspection Photos  
Operator Name: TEP ROCKY MOUNTAIN LLC # 96850  
Location ID: 452011



**Photo 9:** Photo provide example of inadequate perimeter control measures resulting in sediment discharge, contamination and erosion degradation to the topsoil stockpiles along the perimeter of the Location.



Inspection Photos  
Operator Name: TEP ROCKY MOUNTAIN LLC # 96850  
Location ID: 452011



**Photo 10:** Photo provide example of inadequate perimeter control measures resulting in sediment discharge, contamination and erosion degradation to the topsoil stockpiles along the perimeter of the Location. Perimeter stormwater and erosion control measures to allow for sediment laden-free stormwater discharge inadequate.



Inspection Photos  
Operator Name: TEP ROCKY MOUNTAIN LLC # 96850  
Location ID: 452011



**Photo 11:** Continued from photo 10. Photo shows example of erosion degradation observed at the topsoil stockpiles below the wattle erosion log.



Inspection Photos  
Operator Name: TEP ROCKY MOUNTAIN LLC # 96850  
Location ID: 452011



**Photo 12:** Bull thistle (photo left) and Canada thistle (photo right). Photos provide example of noxious weeds including observed established on the topsoil stockpiles and slopes throughout the Location.



## Inspection Photos

Operator Name: TEP ROCKY MOUNTAIN LLC # 96850

Location ID: 452011



**Photo 13:** Photo shows the cuttings trench on the southwest end of the Location. Trench/pit requires permitting. Photo also shows that stormwater has been allowed to flow into the cuttings trench and is now considered E&P waste; fluids required removal and disposal.





## Inspection Photos

Operator Name: TEP ROCKY MOUNTAIN LLC # 96850

Location ID: 452011



October 25, 2021  
39.5250884N 107.7989694W

**Photo 14:** Photo shows culvert at the Location entrance has filled with sediment.



**COLORADO**  
Oil & Gas Conservation  
Commission  
Department of Natural Resources