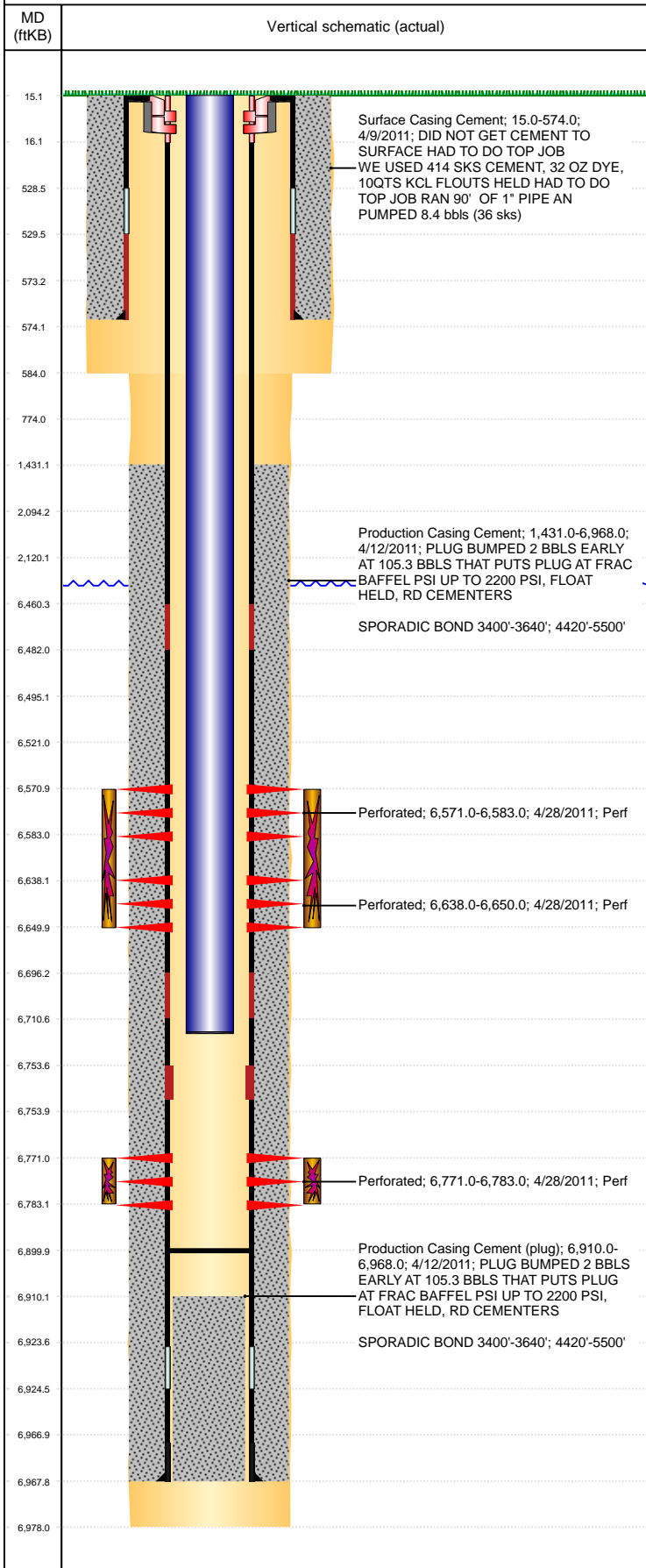


**Well Name: MARLEY C01-30D**

DEVIATED, ORIGINAL HOLE, 10/27/2021 9:13:49 AM



| Well Header   |             |  |                    |                     |   |                              |                                    |                                       |            |
|---|-------------|--|--------------------|---------------------|---|------------------------------|------------------------------------|---------------------------------------|------------|
| API<br>05-123-31223   |             | Business Unit<br>DJ BASIN              |                    |                     | District<br>15                              |                              | Well Config<br>DEVIATED            |                                       |            |
| KB - GL / MSL (ft...<br>15.00   |             | Spud Date<br>4/8/2011                  |                    | P & A Date          |   | Well Production Status<br>PR |                                    |                                       | SoRT<br>No |
| Comment<br>DRILL THOUGH THE FRAC BAFFLE WITH 3 7/8" JUNCK MILL. TIGHT BETWEEN 6583, DOWN TO 6650' |             |  |                    |                     |   |                              |                                    |                                       |            |
| Surface Location (Congressional)  |             |  |                    |                     |   |                              |                                    |                                       |            |
| Qtr 3<br>NW   | Qtr 4<br>NW | Section<br>1                           | Twnshp<br>4        | Twnsh...<br>N       | Range<br>64                                 | Rng E...<br>W                | Actual Latitude (°)<br>40.34726576 | Actual Longitude (°)<br>-104.50581609 |            |
| Wellbore Sections   |             |  |                    |                     |   |                              |                                    |                                       |            |
| Section Des   |             |  | Size (in)          |                     |   | Act Top, MD (ftKB)           |                                    | Act Btm, MD (ftKB)                    |            |
| SURFACE   |             |  | 12 1/4             |                     |   | 15                           |                                    | 584                                   |            |
| PRODUCTION  |             |  | 7 7/8              |                     |   | 584                          |                                    | 6,978                                 |            |
| Casing Strings  |             |  |                    |                     |   |                              |                                    |                                       |            |
| Csg Des   |             | Run Date                               |                    | OD (in)             | Wt/Len (lb/ft)                              | Grade                        | Top, MD (ftKB)                     | MD (ftKB)                             |            |
| Surface   |             | 4/9/2011                               |                    | 8 5/8               | 24.00                                       | J-55                         | 14.9                               | 574.0                                 |            |
| Production  |             | 4/12/2011                              |                    | 4 1/2               | 11.60                                       | M-80                         | 15.1                               | 6,968.0                               |            |
| Cement  |             |  |                    |                     |   |                              |                                    |                                       |            |
| Des   |             |  |                    | Start Date          |   | Top (ftKB)                   |                                    | Btm (ftKB)                            |            |
| Surface Casing Cement   |             |  |                    | 4/9/2011            |   | 15.0                         |                                    | 574.0                                 |            |
| Production Casing Cement  |             |  |                    | 4/12/2011           |   | 1,431.0                      |                                    | 6,968.0                               |            |
| Zone Statuses   |             |  |                    |                     |   |                              |                                    |                                       |            |
| Zone Name   |             | Status Date                            | Status             | Fluid Type          | Job   |                              |                                    | Prod Method                           |            |
| NIOBRARA  |             | 7/19/2011                              | PR                 |                     | DRILLING/COMPLETION - ORIGINAL, 4/8/2011... |                              |                                    |                                       |            |
| CODELL  |             | 7/19/2011                              | PR                 |                     | DRILLING/COMPLETION - ORIGINAL, 4/8/2011... |                              |                                    |                                       |            |
| Perforation Data  |             |  |                    |                     |   |                              |                                    |                                       |            |
| Linked Zone   |             | Bnch/Stg                               | Entered Shot Total | Top (ftKB)          |   | Btm (ftKB)                   |                                    | Date                                  |            |
| NIOBRARA, ORIGINAL HOLE   |             | B                                      | 24                 | 6,571.00            |   | 6,583.00                     |                                    | 4/28/2011                             |            |
| NIOBRARA, ORIGINAL HOLE   |             | C                                      | 24                 | 6,638.00            |   | 6,650.00                     |                                    | 4/28/2011                             |            |
| CODELL, ORIGINAL HOLE   |             |  | 48                 | 6,771.00            |   | 6,783.00                     |                                    | 4/28/2011                             |            |
| Stimulation Intervals   |             |  |                    |                     |   |                              |                                    |                                       |            |
| Zone  |             |  | Start Date         |                     |   | Top (ftKB)                   |                                    | Btm (ftKB)                            |            |
| NIOBRARA, ORIGINAL HOLE   |             |  | 5/13/2011          |                     |   | 6,571.0                      |                                    | 6,650.0                               |            |
| CODELL, ORIGINAL HOLE   |             |  | 5/13/2011          |                     |   | 6,771.0                      |                                    | 6,783.0                               |            |
| Other In Hole   |             |  |                    |                     |   |                              |                                    |                                       |            |
| Run Date  | Des         |  |                    | Make                |   | OD (in)                      | Top (ftKB)                         | Btm (ftKB)                            |            |
|   |             |  |                    |                     |   |                              |                                    |                                       |            |
| Logs  |             |  |                    |                     |   |                              |                                    |                                       |            |
| Date  |             | Type                                   |                    |                     |   | Top, MD (ftKB)               |                                    | Btm, MD (ftKB)                        |            |
| 4/12/2011   |             | Caliper/Comp. Density/Neutron/GR/SP/ML |                    |                     |   | 2,440.0                      |                                    | 6,955.0                               |            |
| 4/12/2011   |             | DIL/GR/SP/Caliper                      |                    |                     |   | 574.0                        |                                    | 6,975.0                               |            |
| 4/25/2011   |             | CBL/CCL/GR                             |                    |                     |   | 1,096.0                      |                                    | 6,909.0                               |            |
| Plug Back Total Depths  |             |  |                    |                     |   |                              |                                    |                                       |            |
| Date  |             | Type                                   |                    | Com                 |   |                              |                                    | Depth (ftKB)                          |            |
| 4/25/2011   |             | FILL                                   |                    | DEPTH LOGGER ON CBL |   |                              |                                    | 6,901.0                               |            |
| 10/26/2011  |             | FILL                                   |                    | 117' OF RAT HOLE    |   |                              |                                    | 6,900.0                               |            |