



**CEMENT BOND
GAMMA RAY
CCL**

Company PDC ENERGY INC.
Well LAIR #1
Field WATTENBERG
County WELD
State COLORADO
Country USA

Company PDC ENERGY INC.
Well LAIR #1
Field WATTENBERG
County WELD
State COLORADO
Country USA

Location: API #: 05-123-12146
SEC 30 TWP 4N RGE 66W
NWSW
Elevation
K.B: 4767'
D.F: 4755'
G.L: 4755'

Date 7/15/2021
Run Number 1
Depth Driller 7460'
Depth Logger 5016'
Bottom Logged Interval 4995'
Top Log Interval 0'
Open Hole Size 12-1/4"
Type Fluid H2O
Density / Viscosity 8.3
Max. Recorded Temp. N/A
Estimated Cement Top N/A
Time Well Ready 0650
Time Logger on Bottom 0730
Equipment Number WL001
Location
Recorded By A-REAGAN
Witnessed By O.MOLINAR

Borehole Record				Tubing Record			
Run Number	Bit	From	To	Size	Weight	From	To

Casing Record	Size	Wgt/Ft	Top	Bottom
Surface String	8-5/8"	24#	0	262'
Prot. String	4-1/2"	11.6#	0	7460'
Production String				
Liner				

<<< Fold Here >>>

All interpretations are opinions based on inferences from electrical or other measurements and we cannot and do not guarantee the accuracy or correctness of any interpretation, and we shall not, except in the case of gross or willful negligence on our part, be liable or responsible for any loss, costs, damages, or expenses incurred or sustained by anyone resulting from any interpretation made by any of our officers, agents or employees. These interpretations are also subject to our general terms and conditions set out in our current Price Schedule.

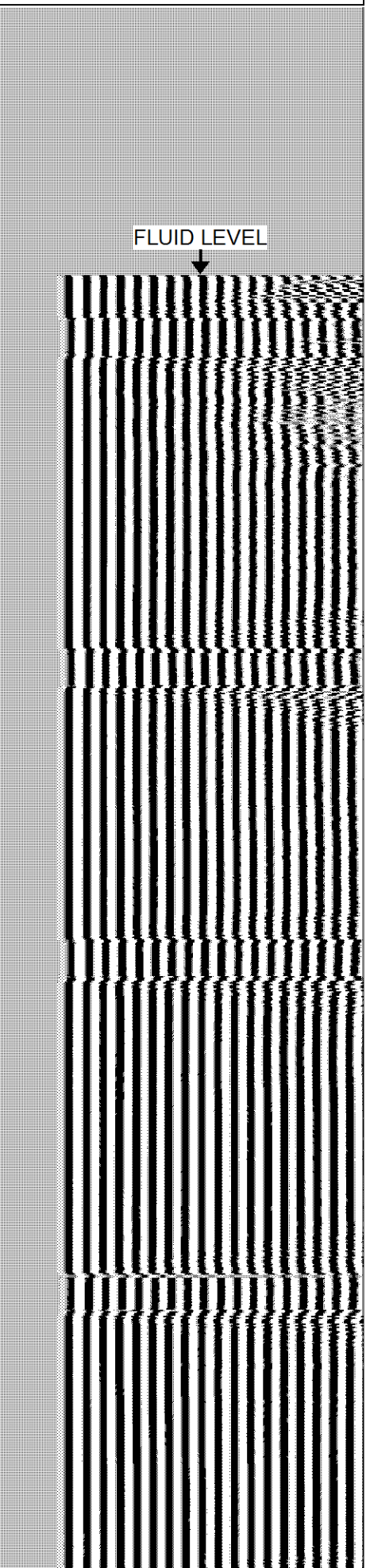
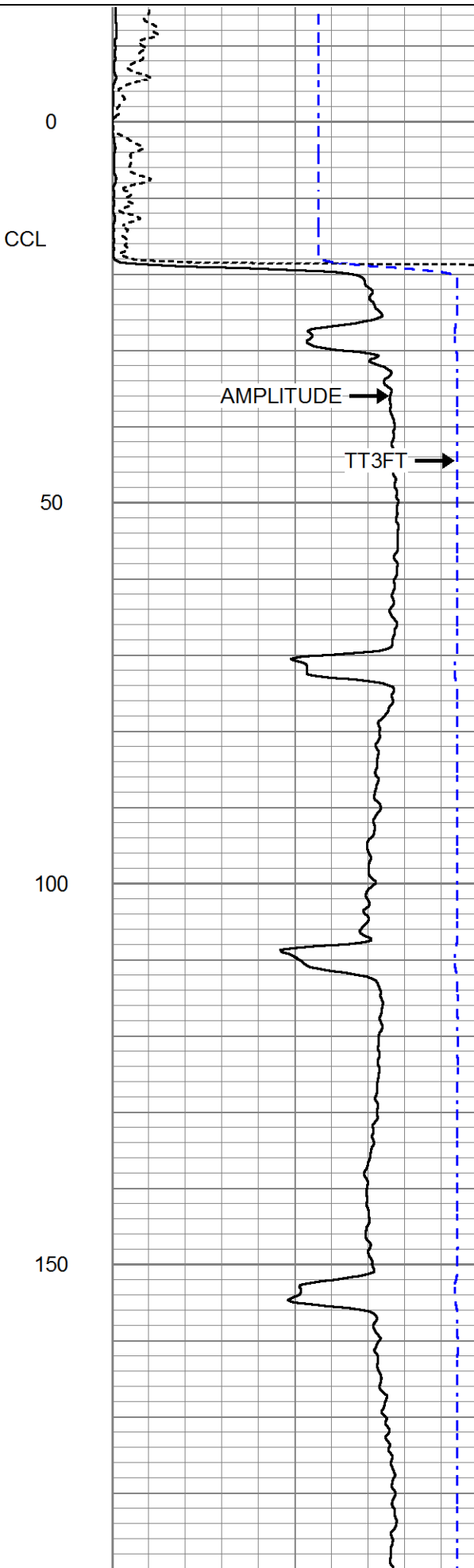
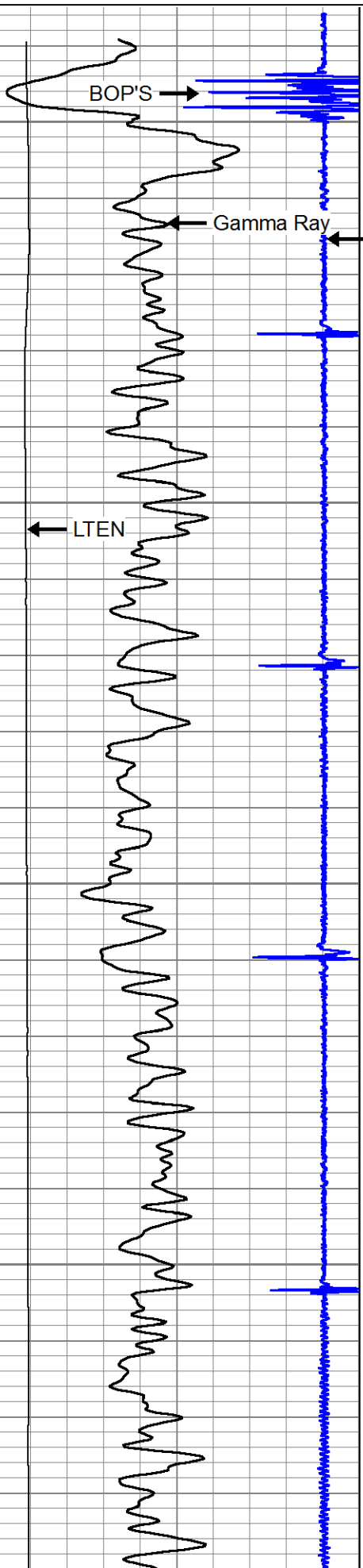
Comments

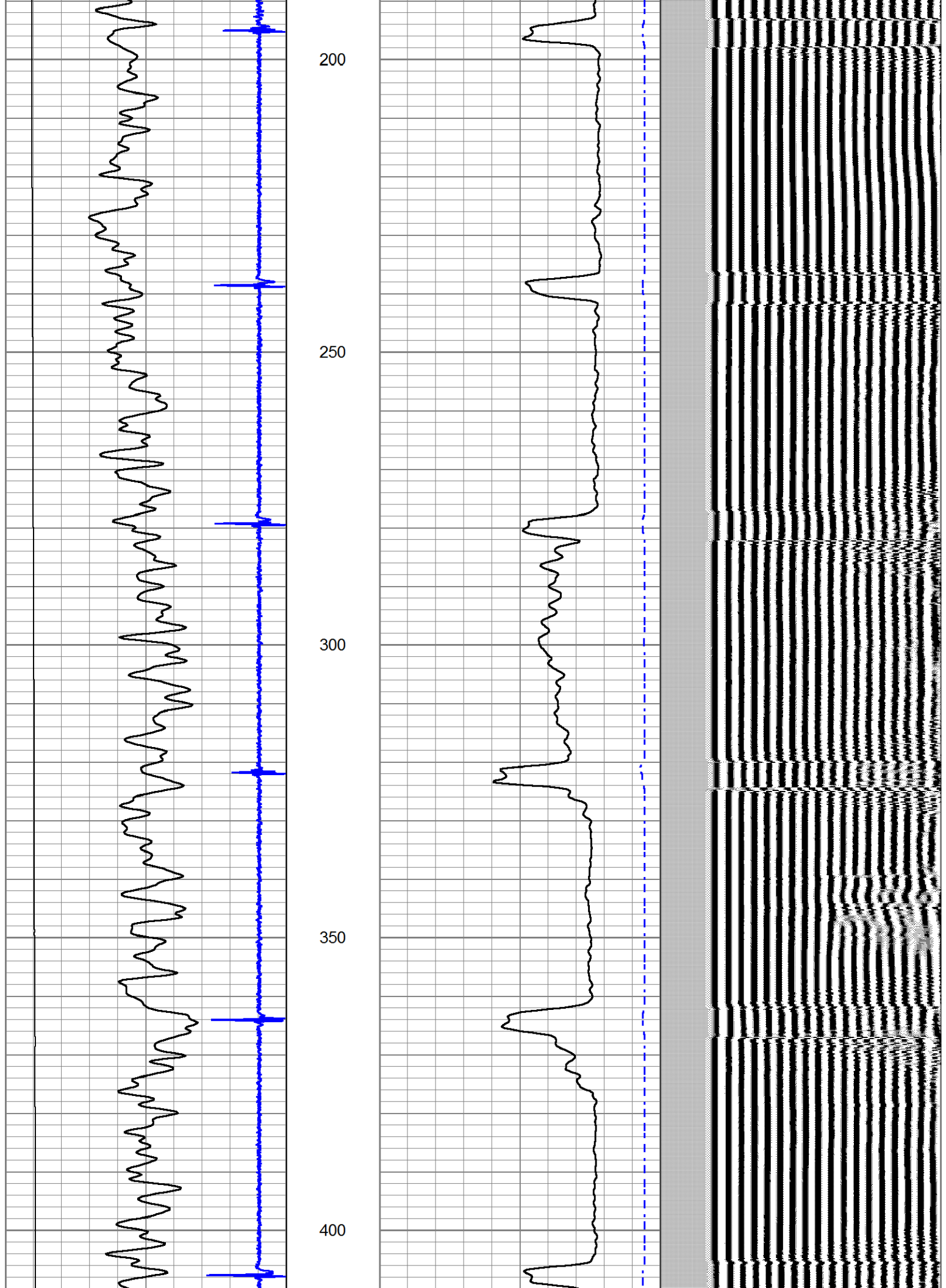
Database File liar #1.db
Dataset Pathname CBL/MAIN_1
Presentation Format cbl_dr
Dataset Creation Thu Jul 15 07:11:06 2021
Charted by Depth in Feet scaled 1:240

9	CCL\$1	-1
0	Gamma Ray (GAPI)	200
0	LTEN (lb)	2000

0	AMP AMPLITUDE (mV)	10	200
0	AMPLITUDE (mV)	100	
1200	TRAVEL TIME (usec)	200	

VDL (usec) 1200





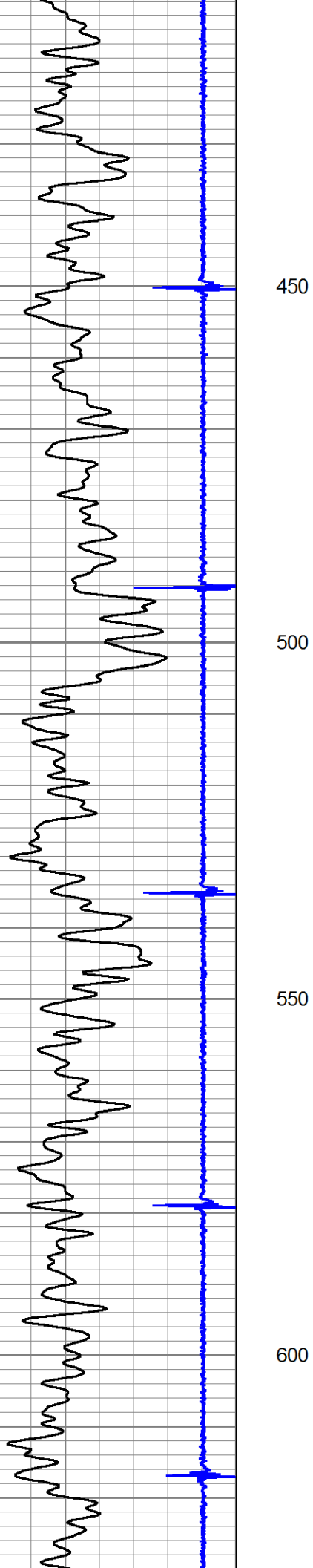
200

250

300

350

400

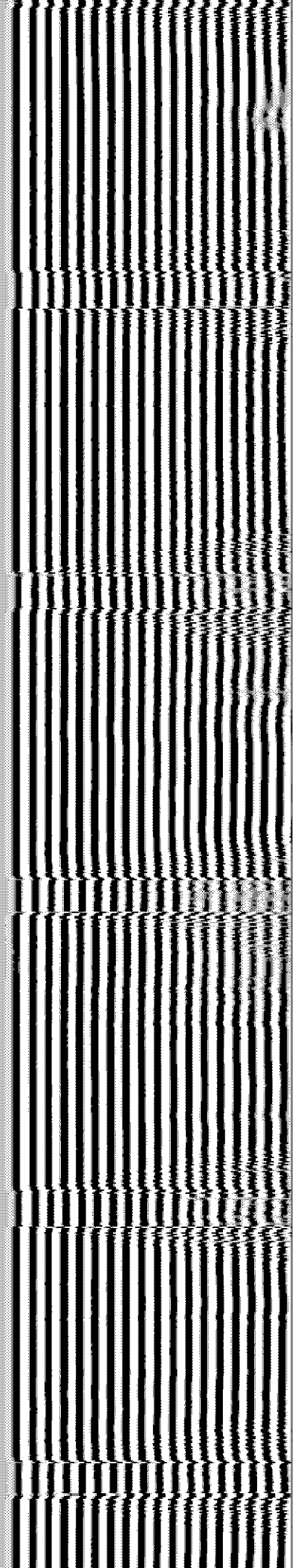
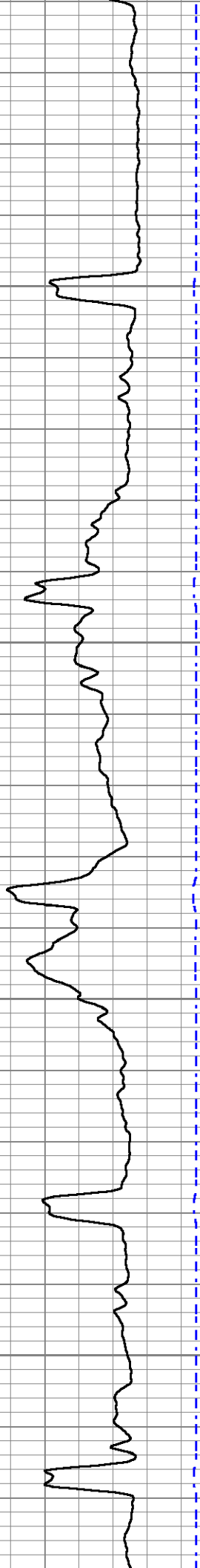


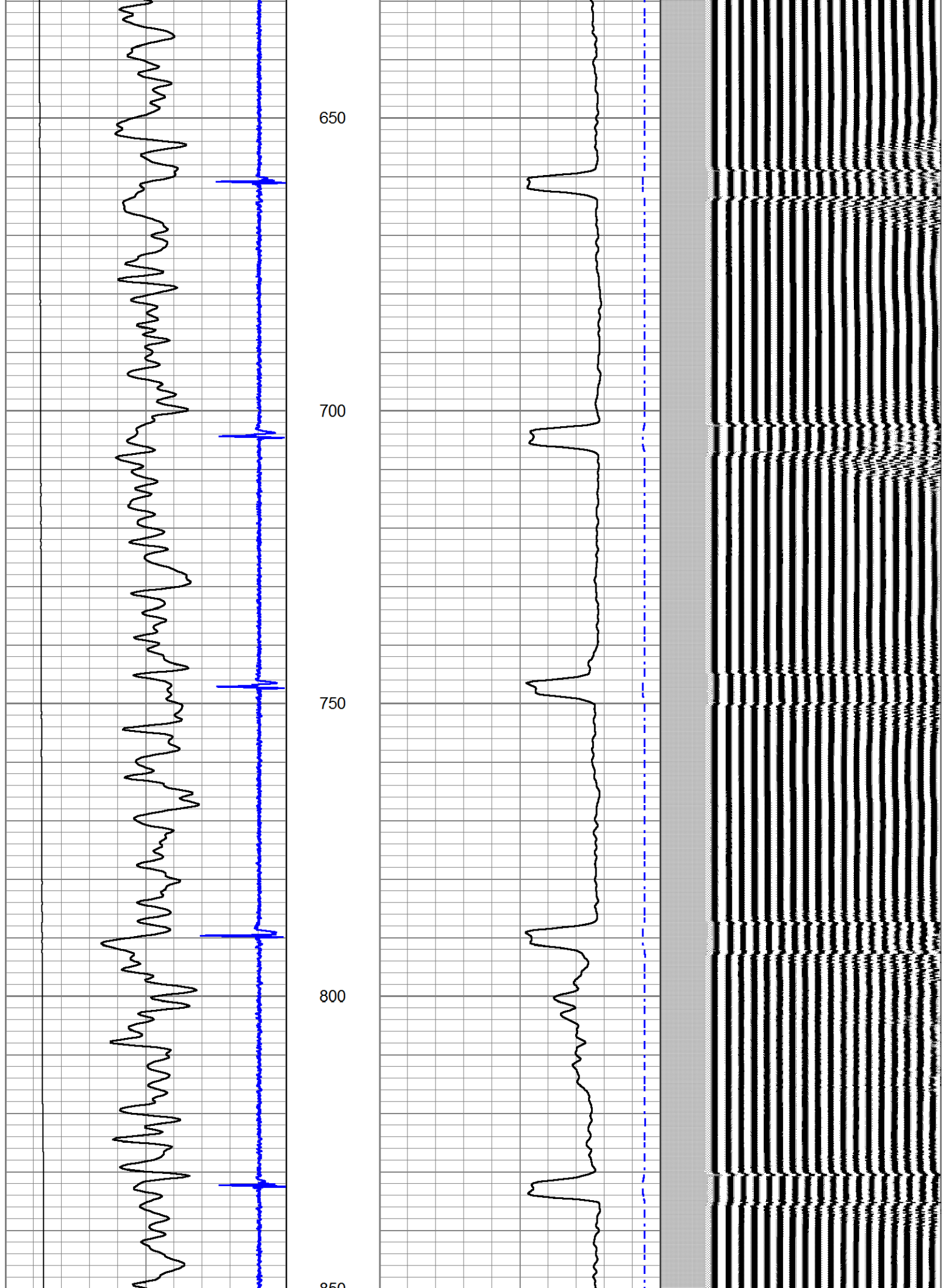
450

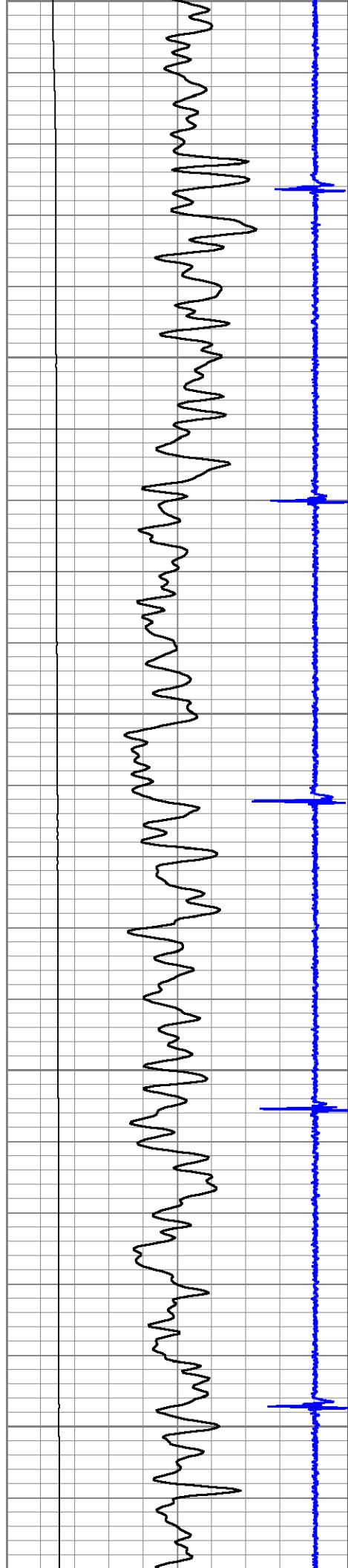
500

550

600







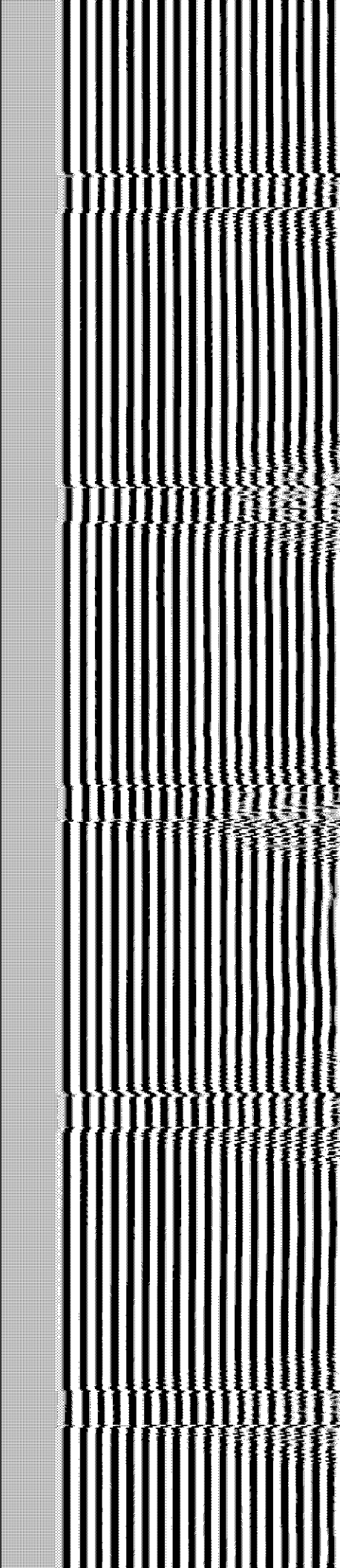
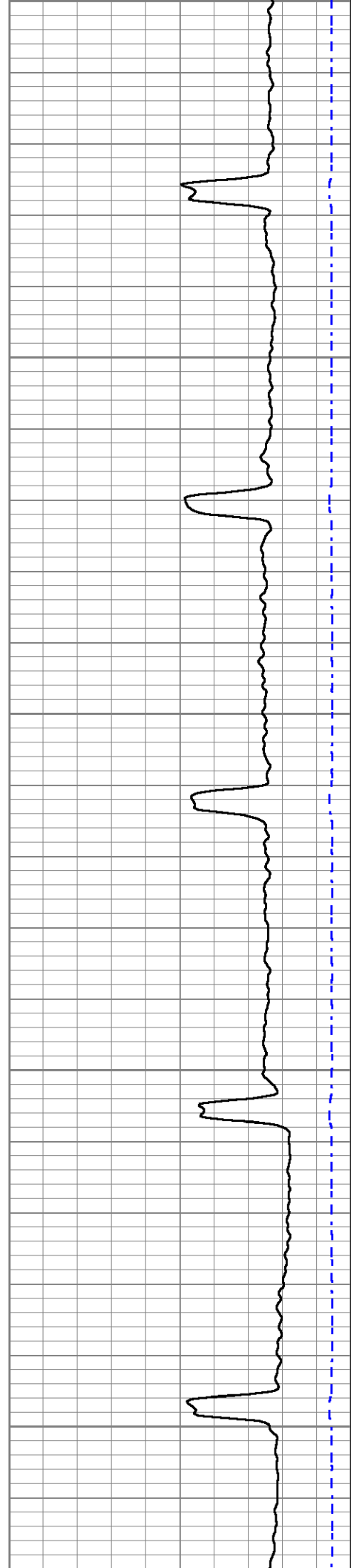
850

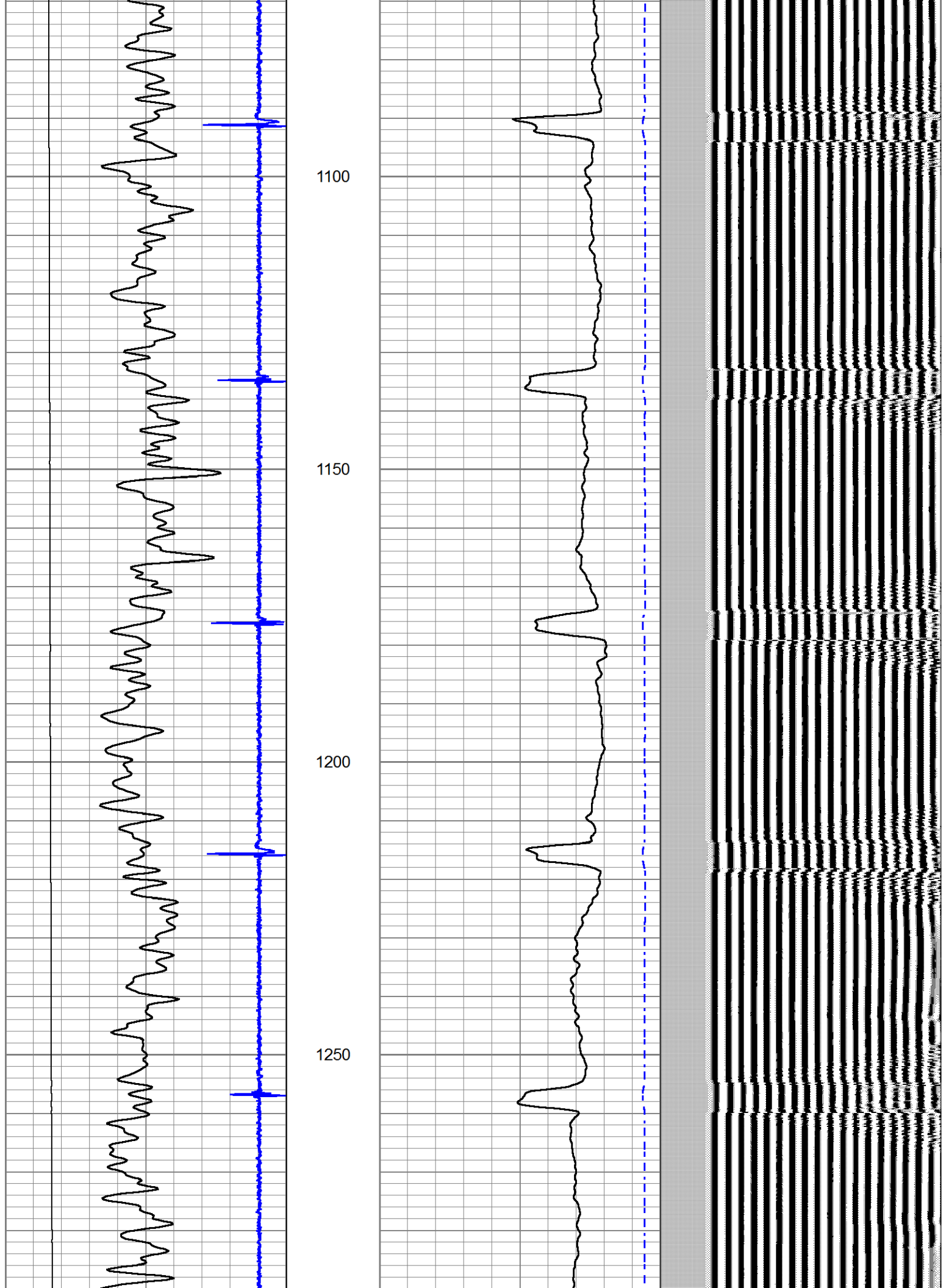
900

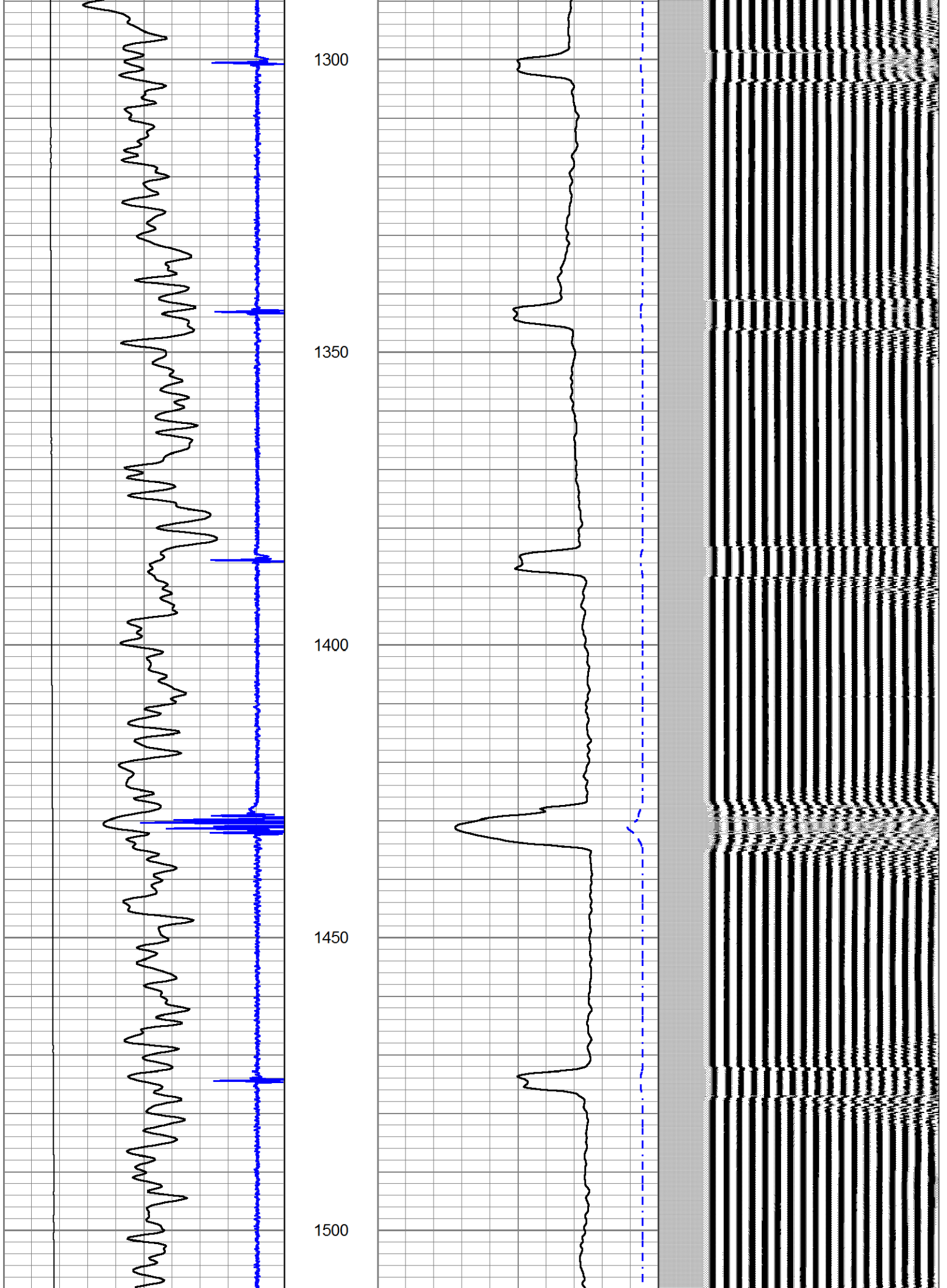
950

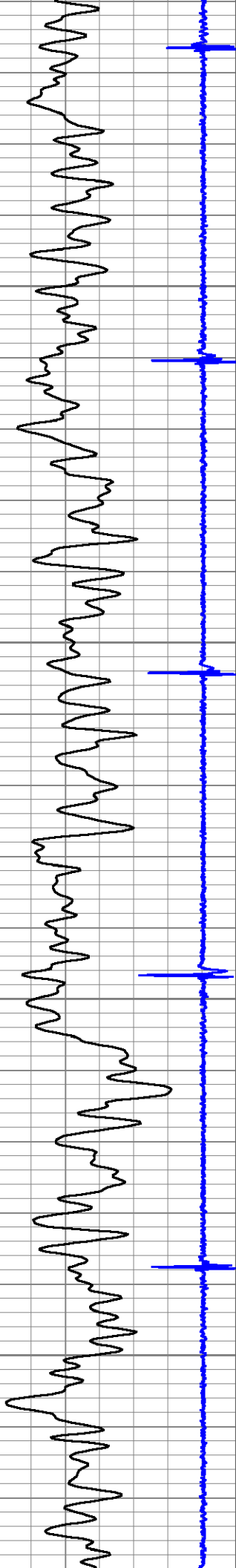
1000

1050







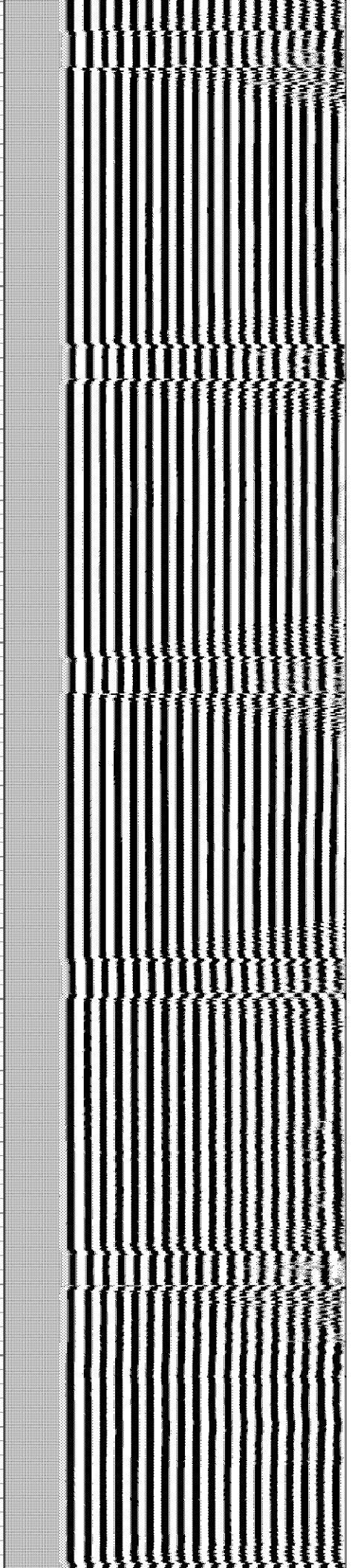
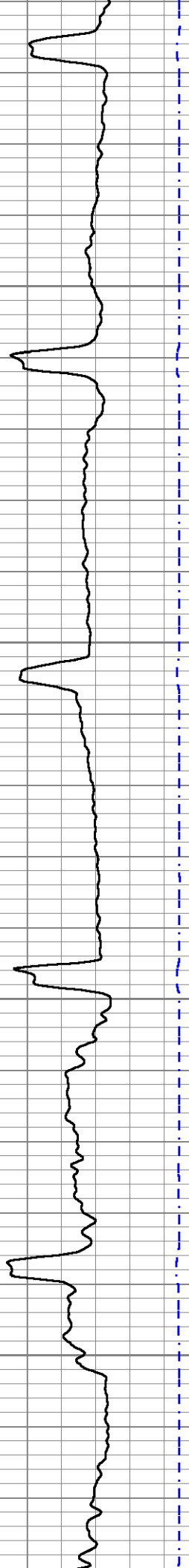


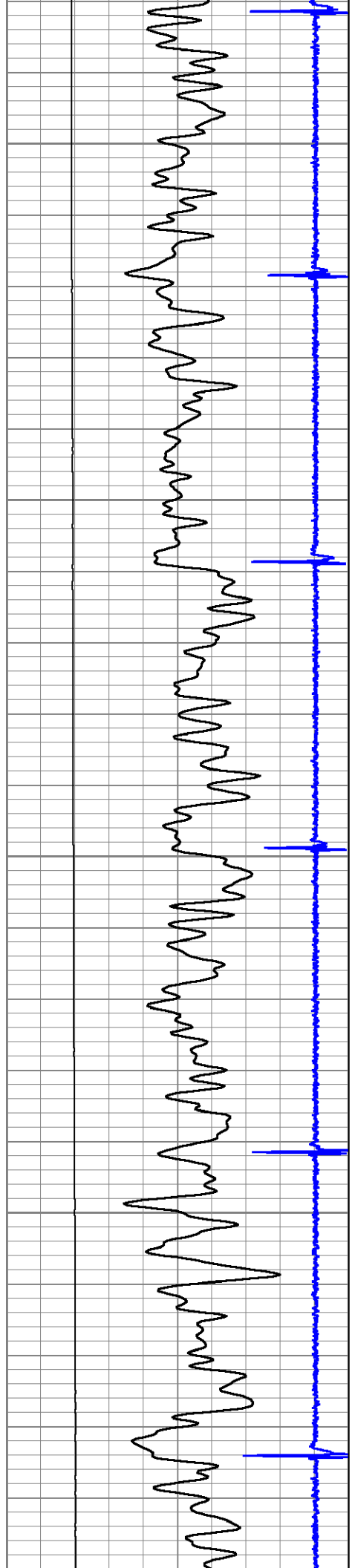
1550

1600

1650

1700





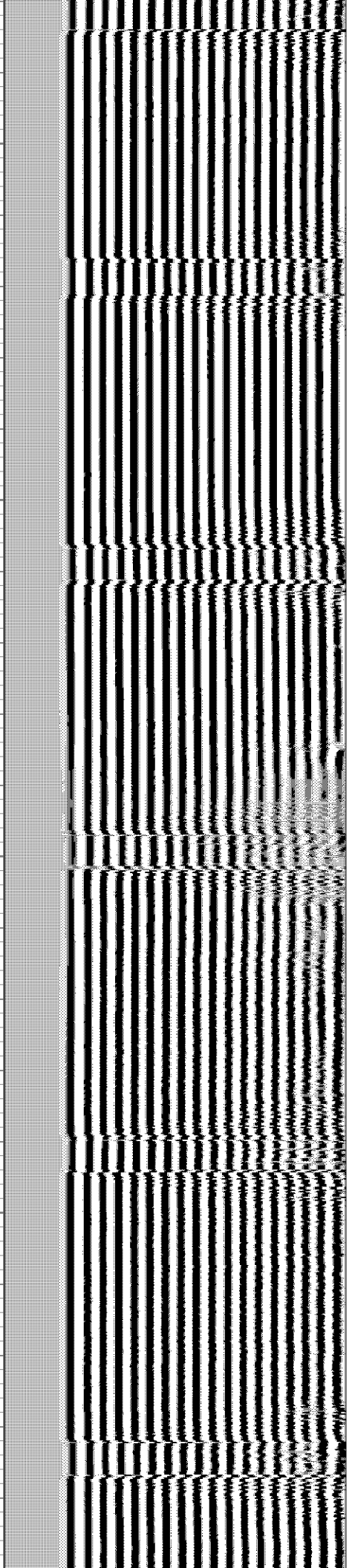
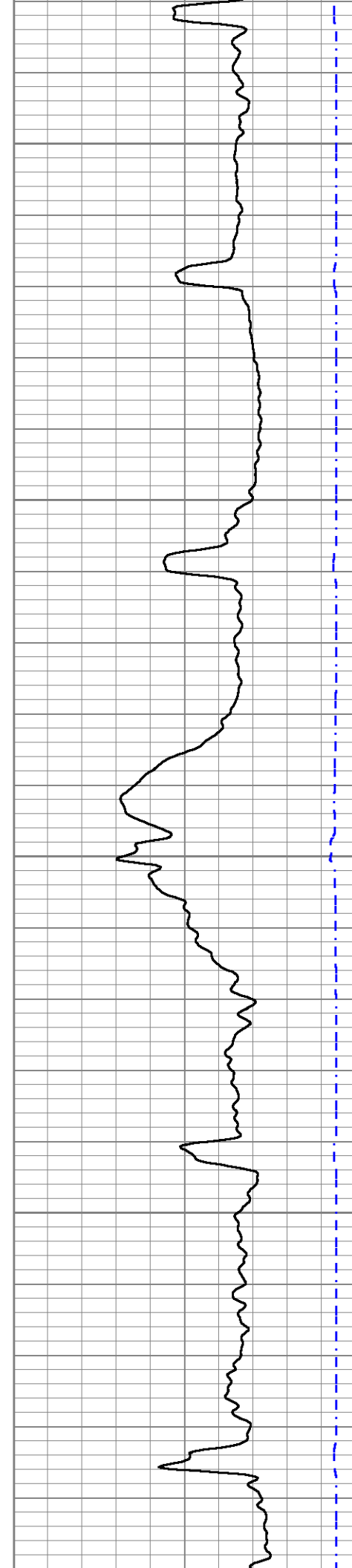
1750

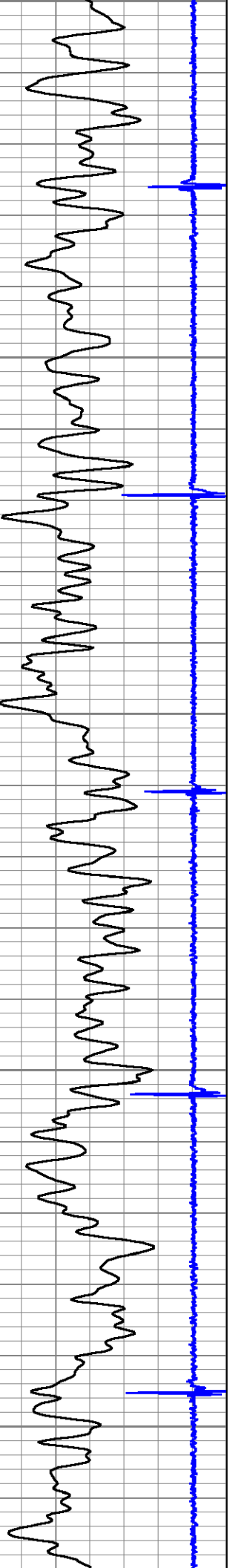
1800

1850

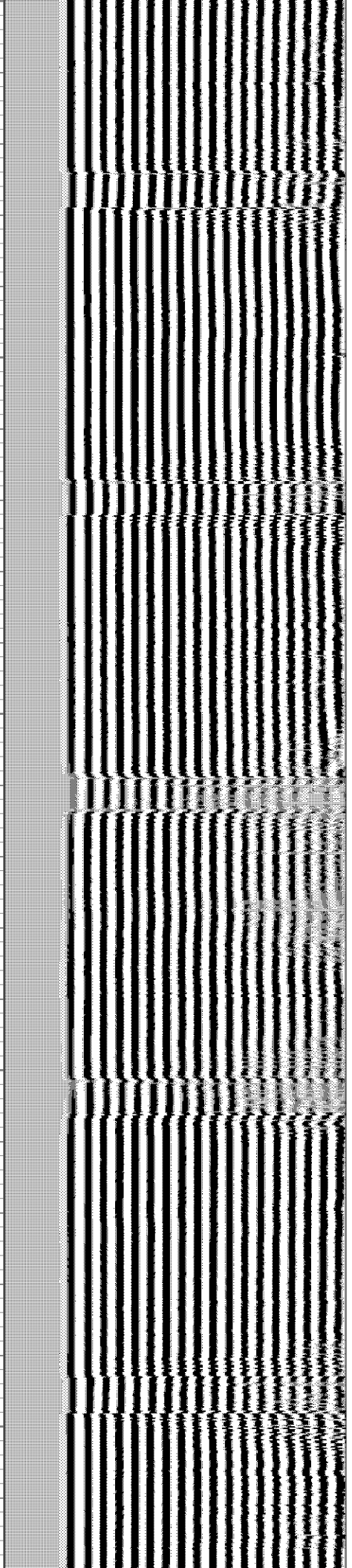
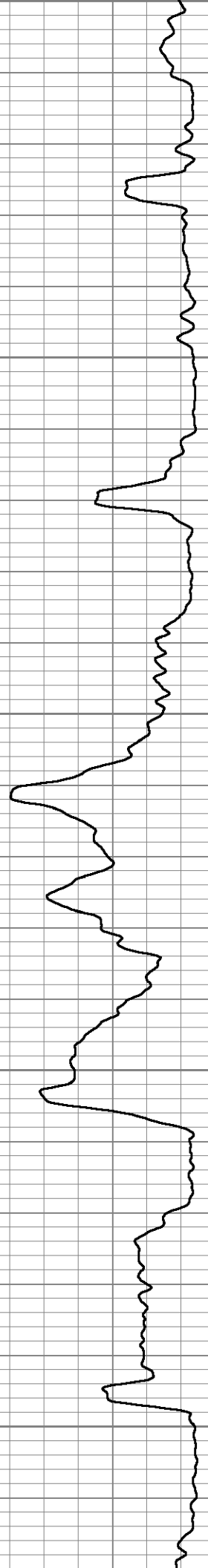
1900

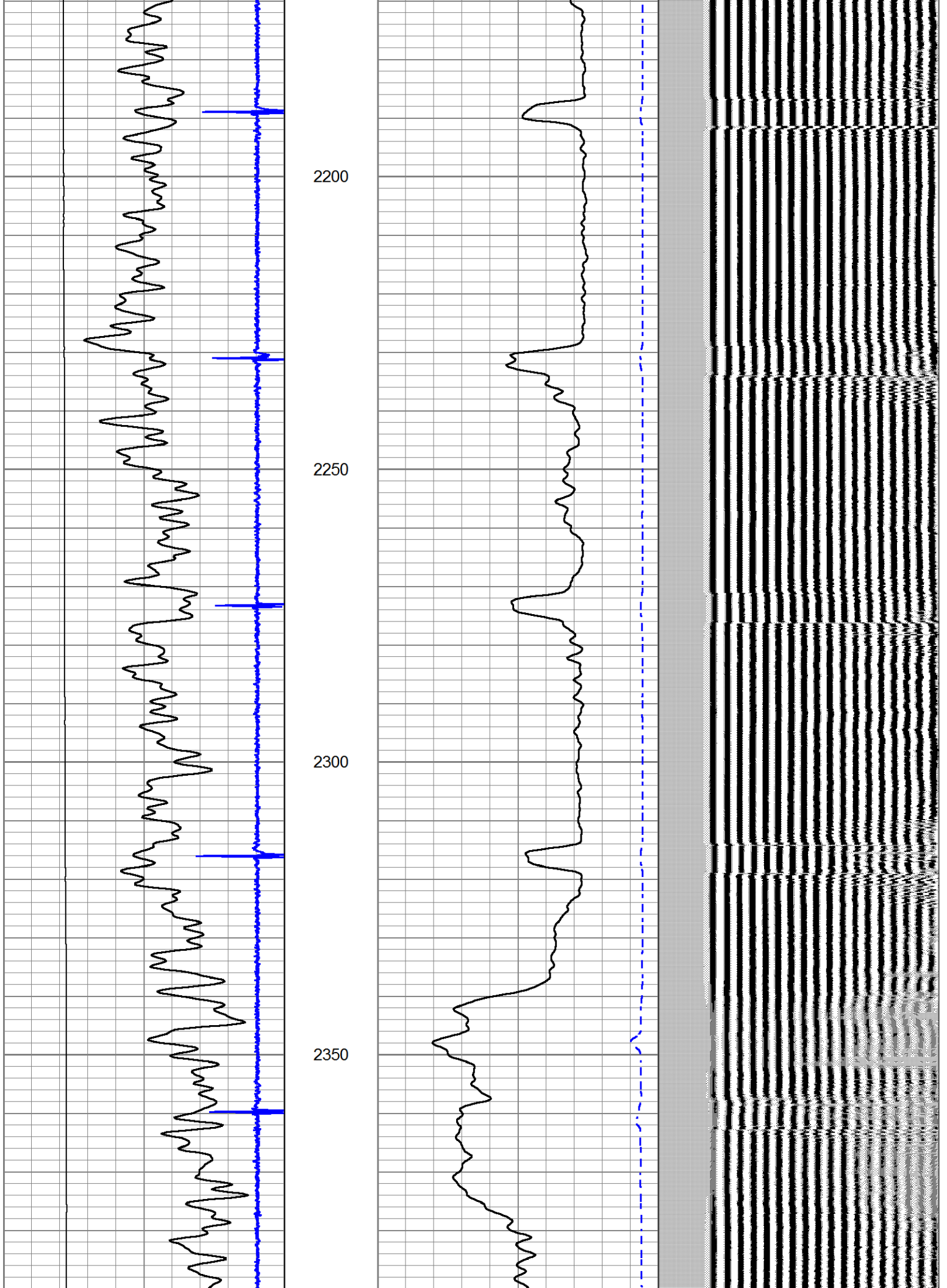
1050

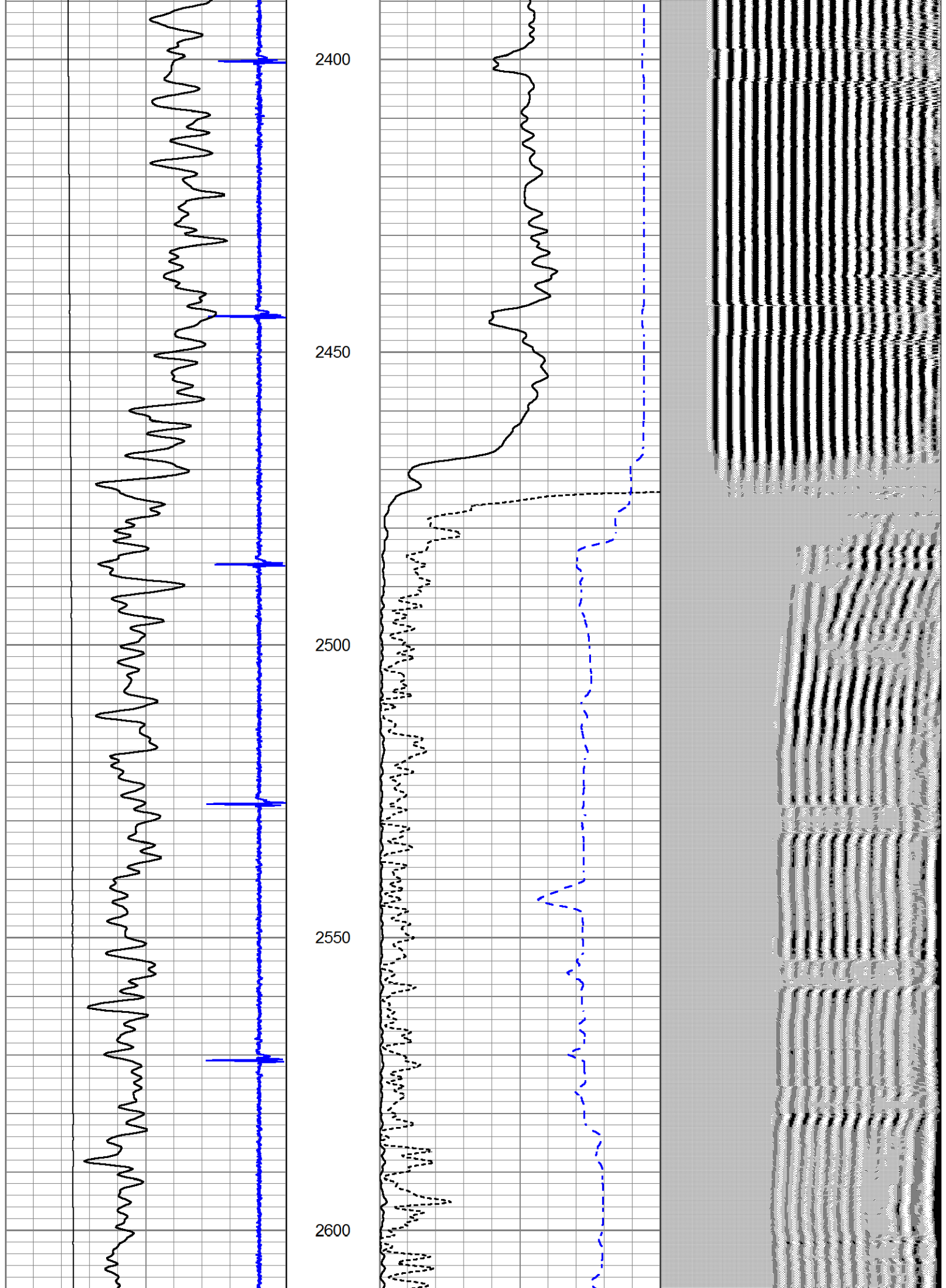


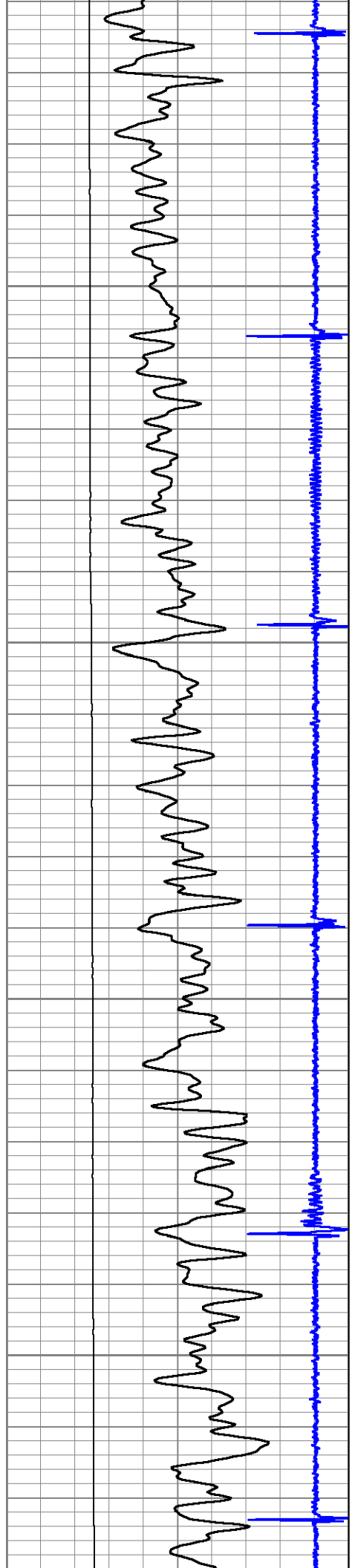


1950
2000
2050
2100
2150







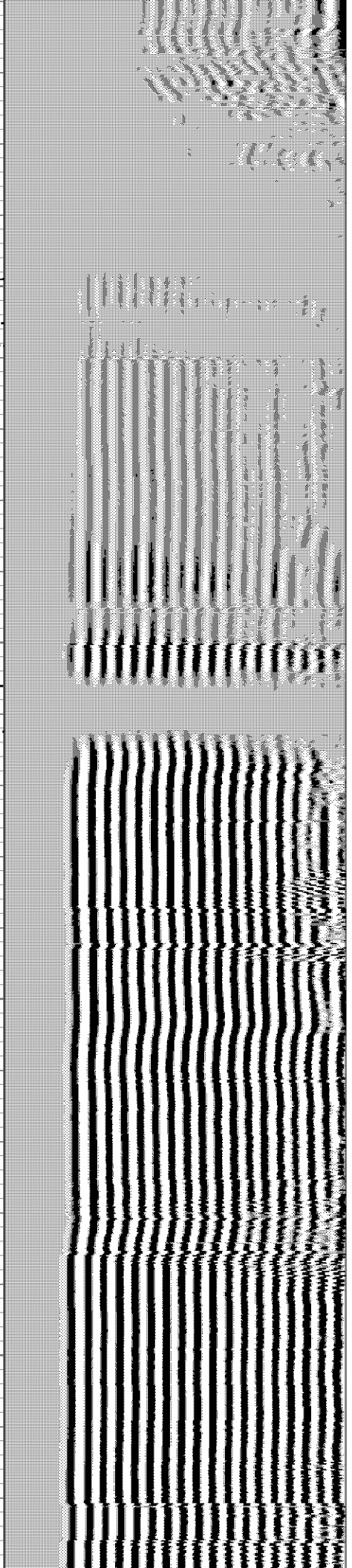
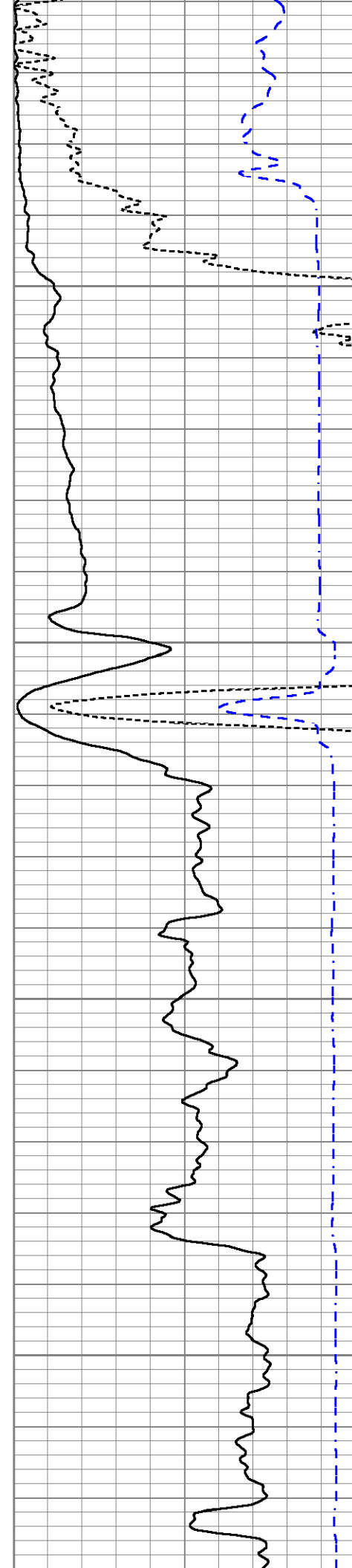


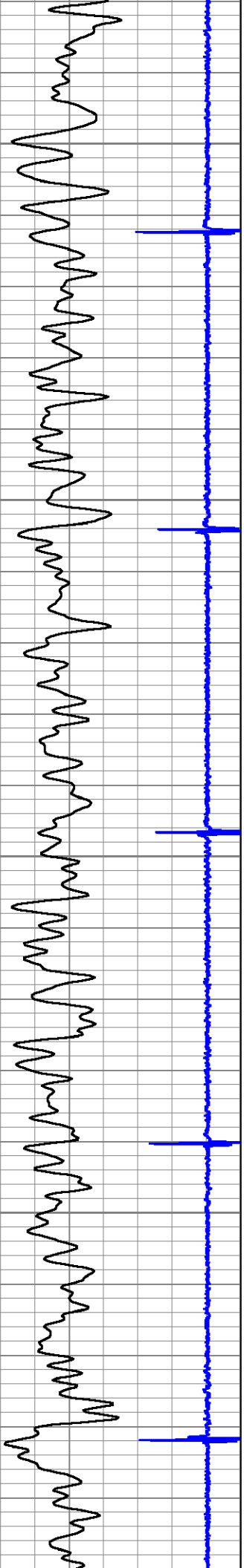
2650

2700

2750

2800





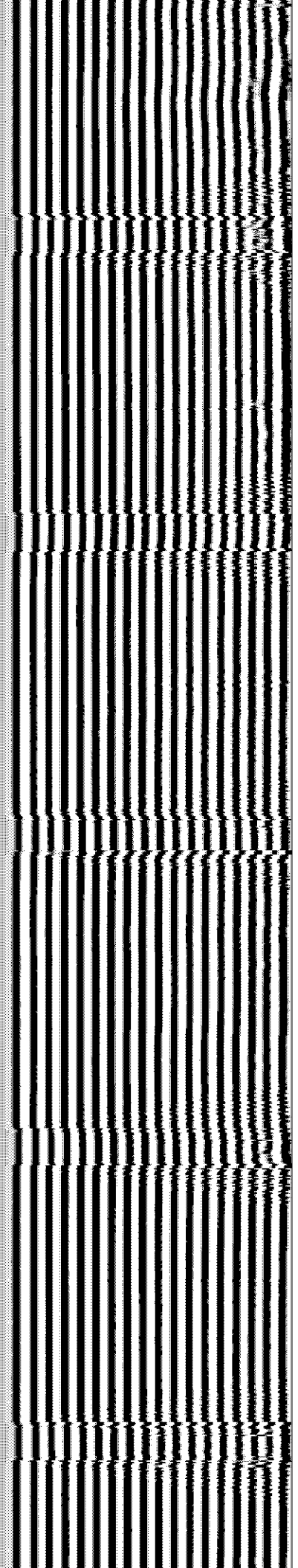
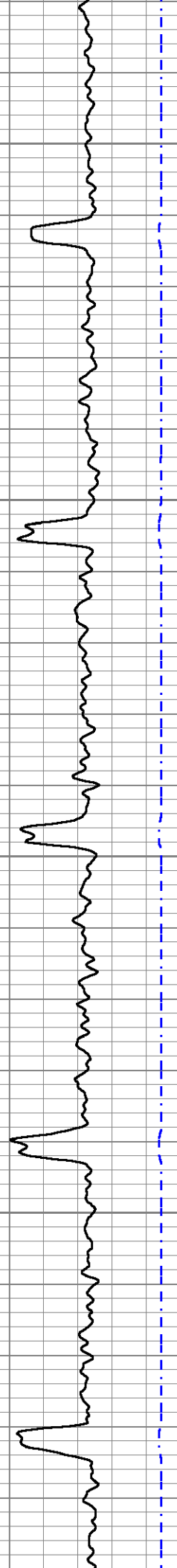
2850

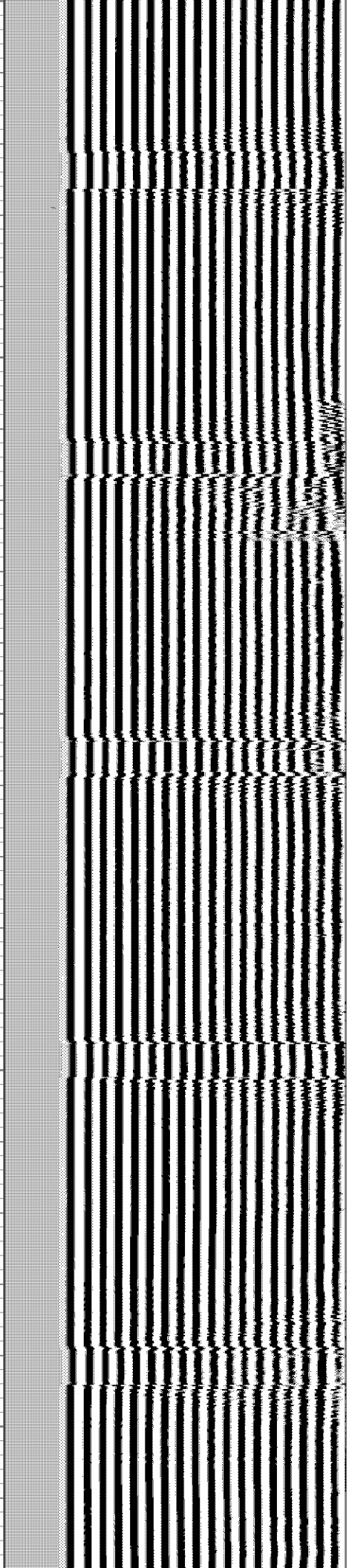
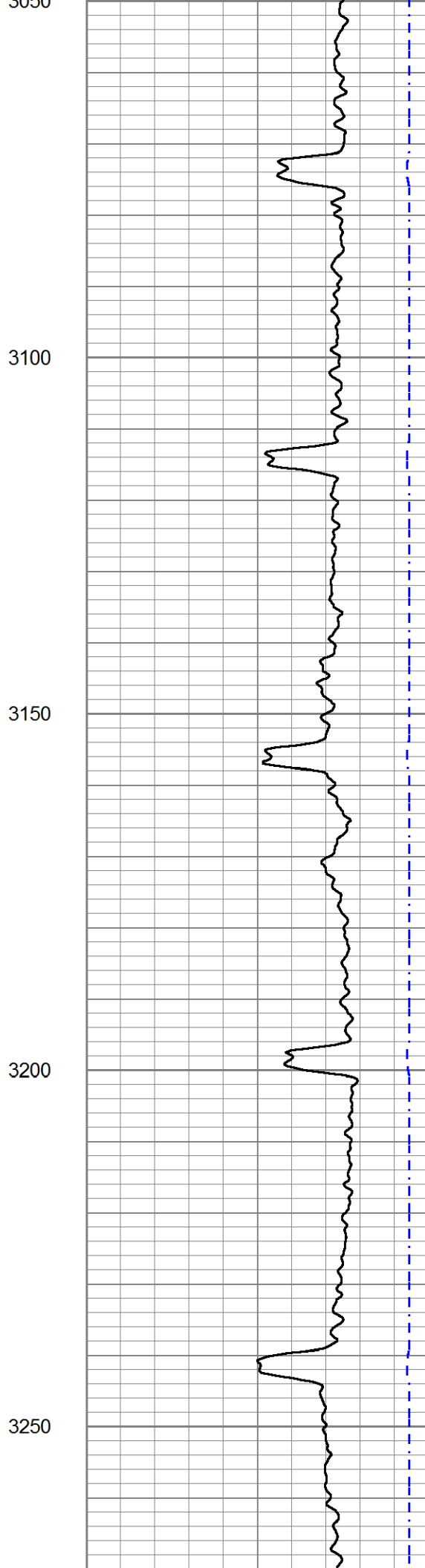
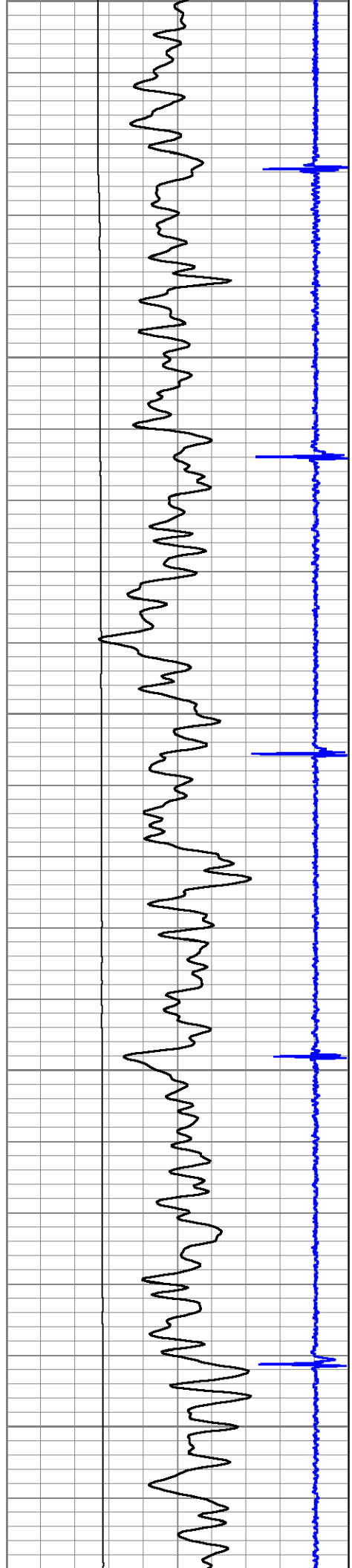
2900

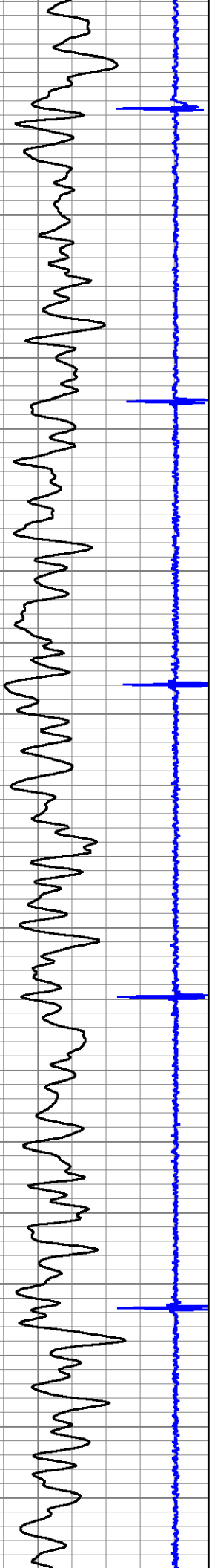
2950

3000

3050





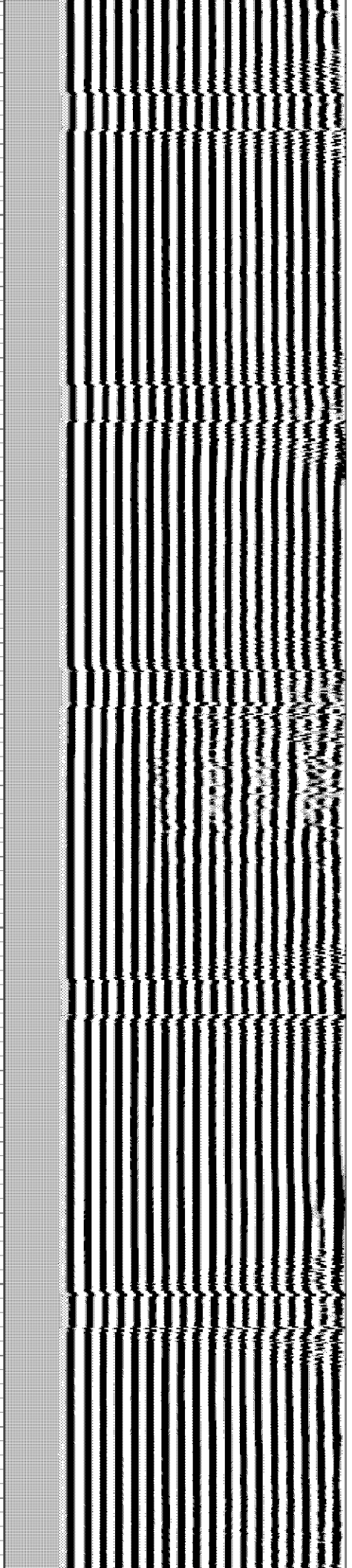
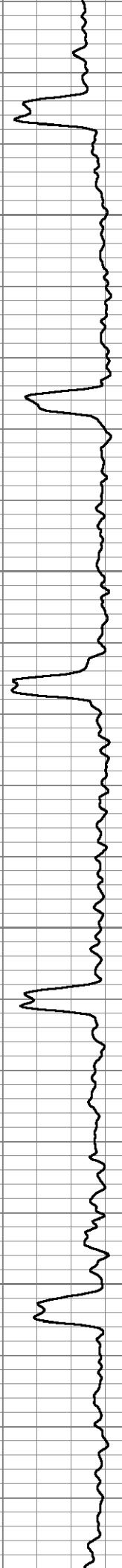


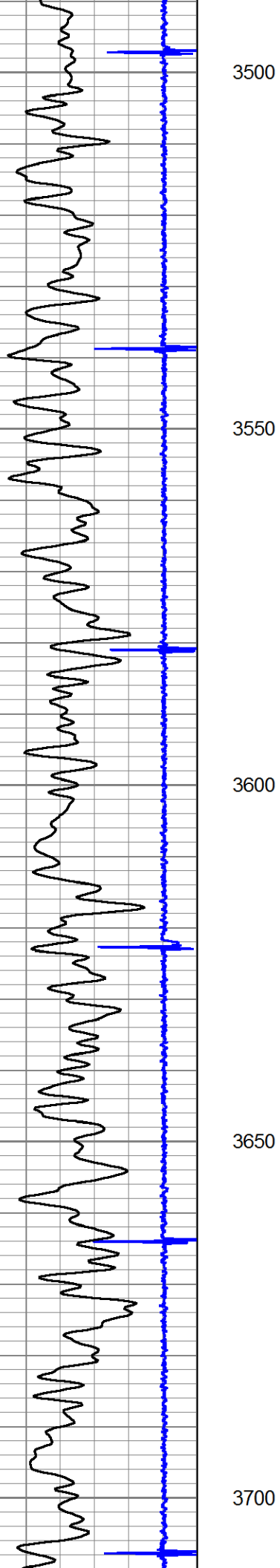
3300

3350

3400

3450





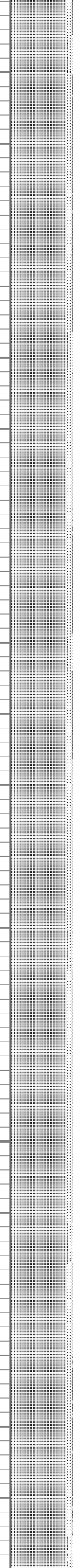
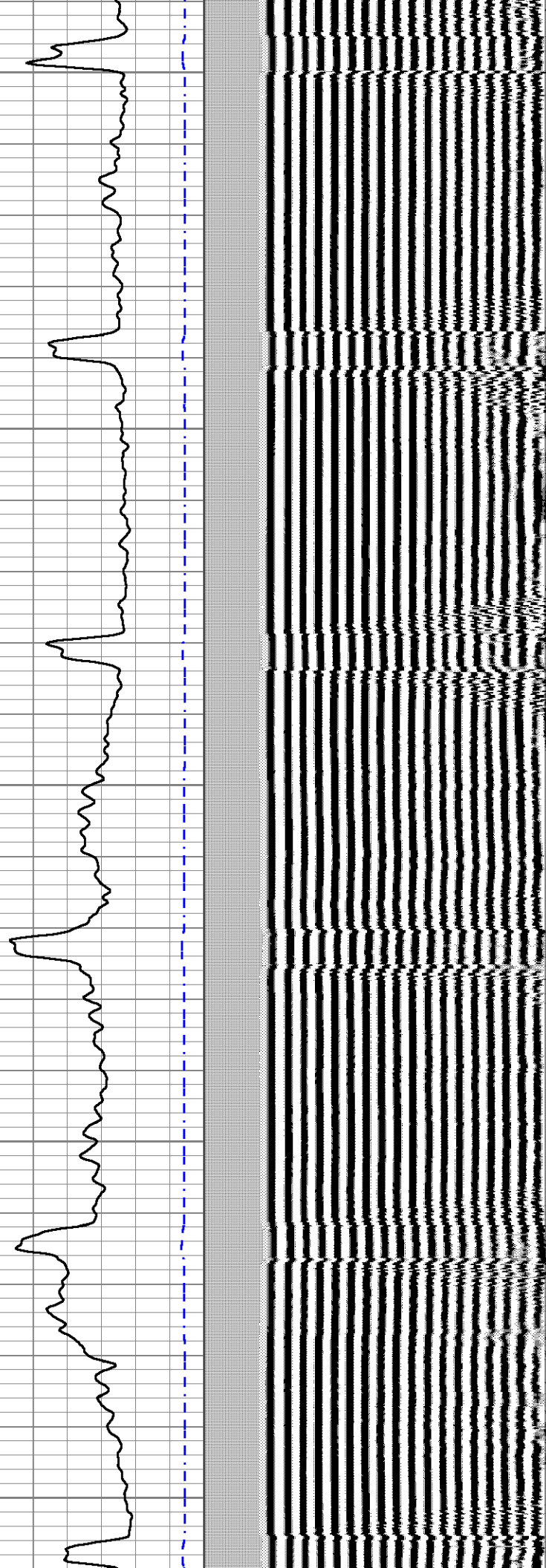
3500

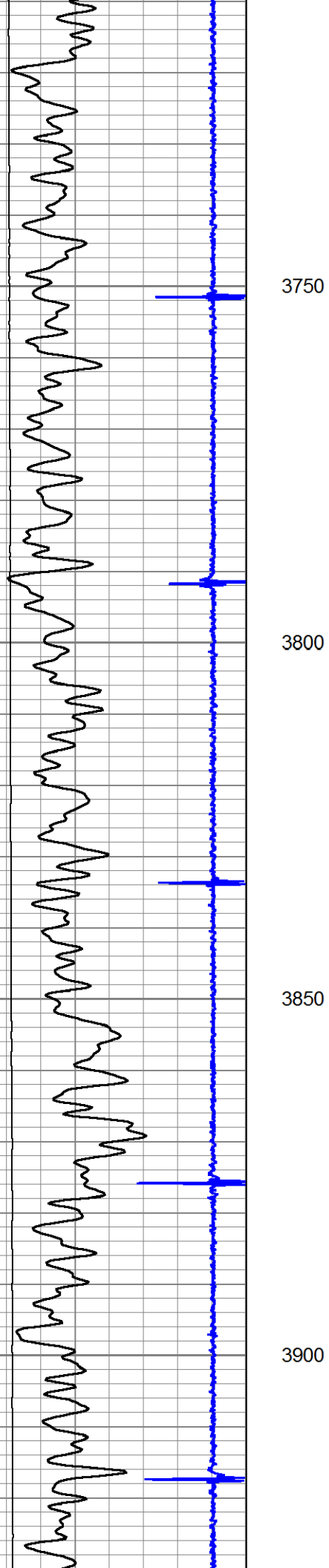
3550

3600

3650

3700



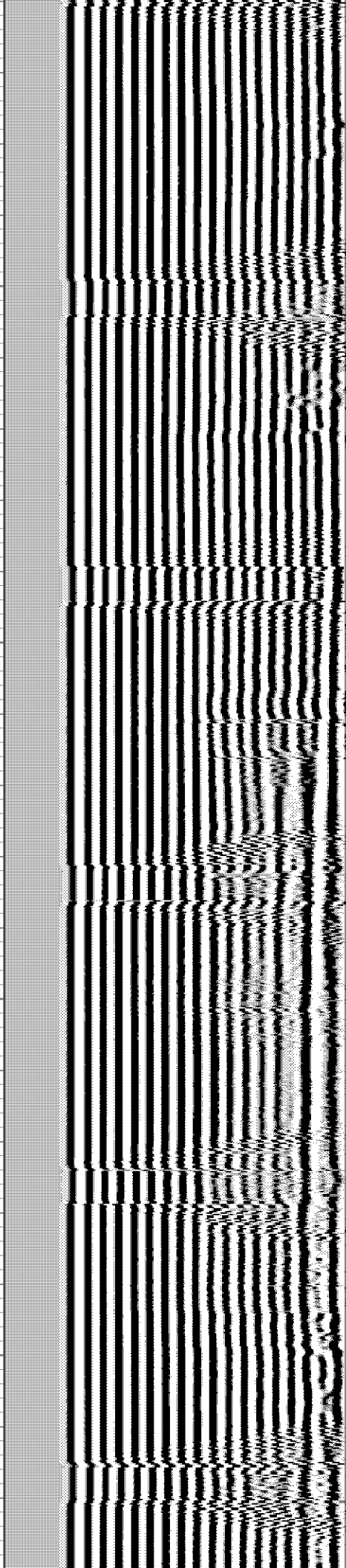
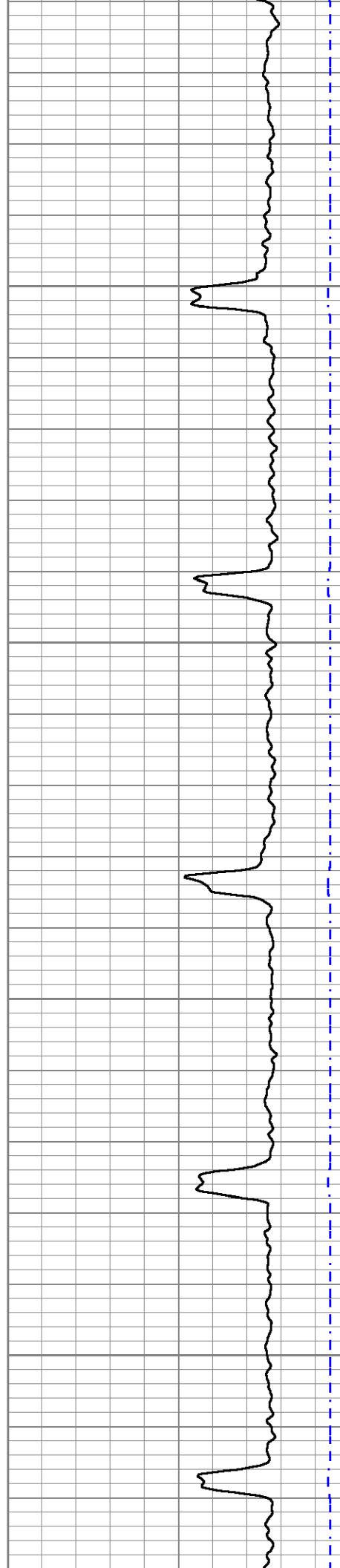


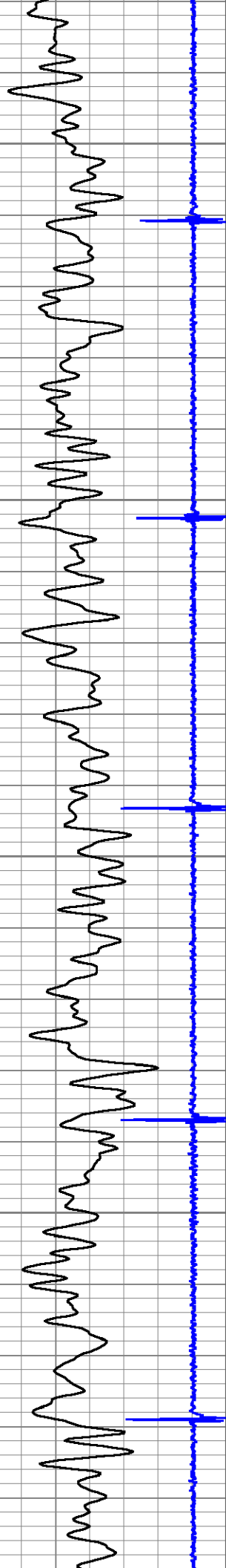
3750

3800

3850

3900





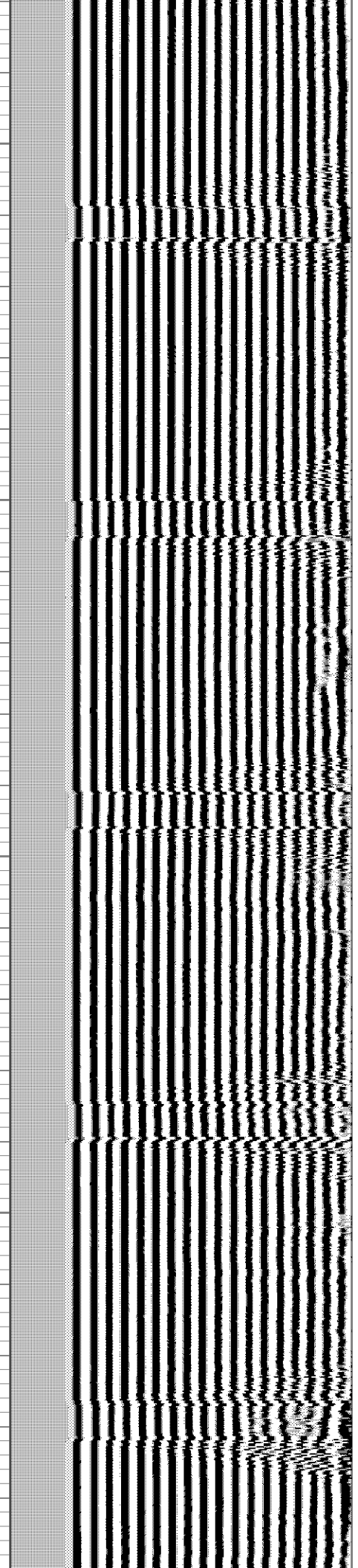
3950

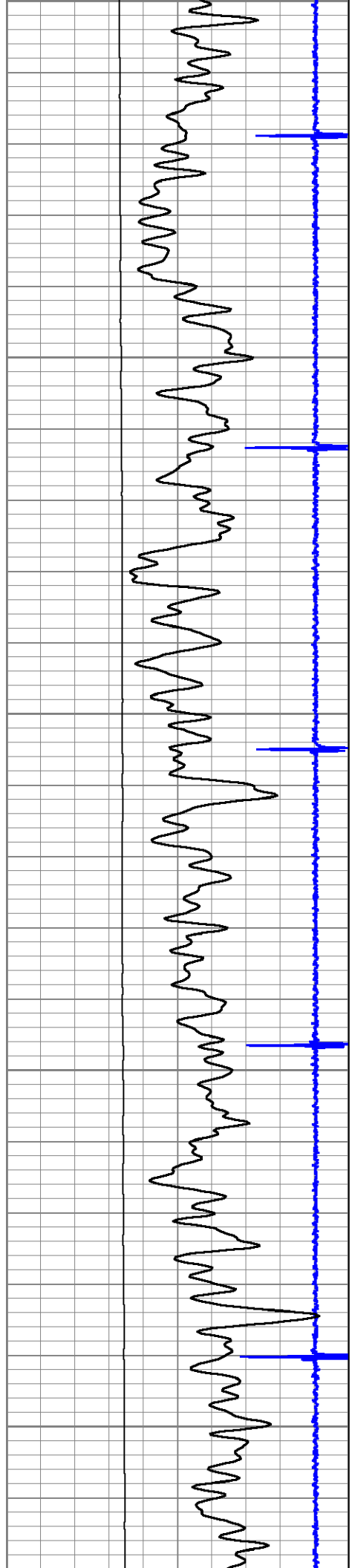
4000

4050

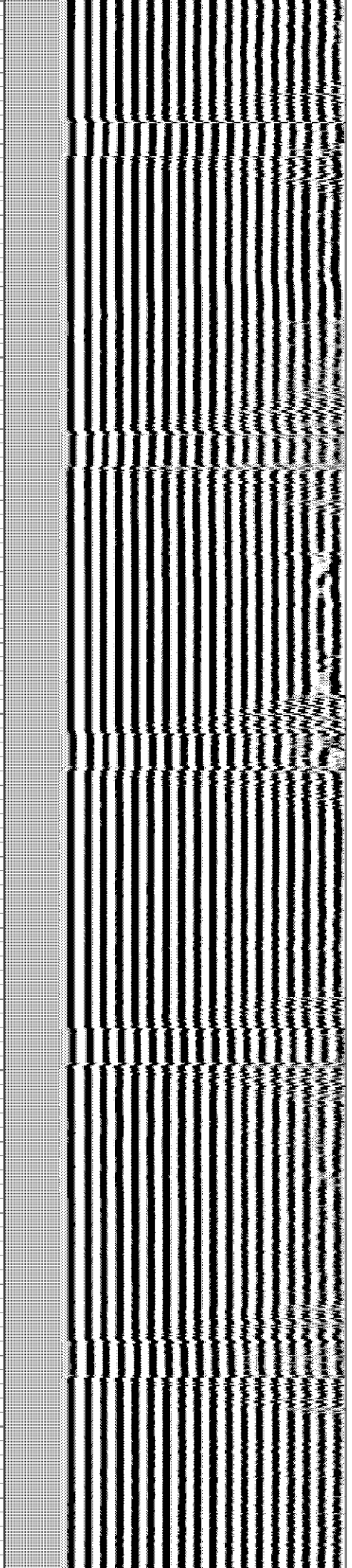
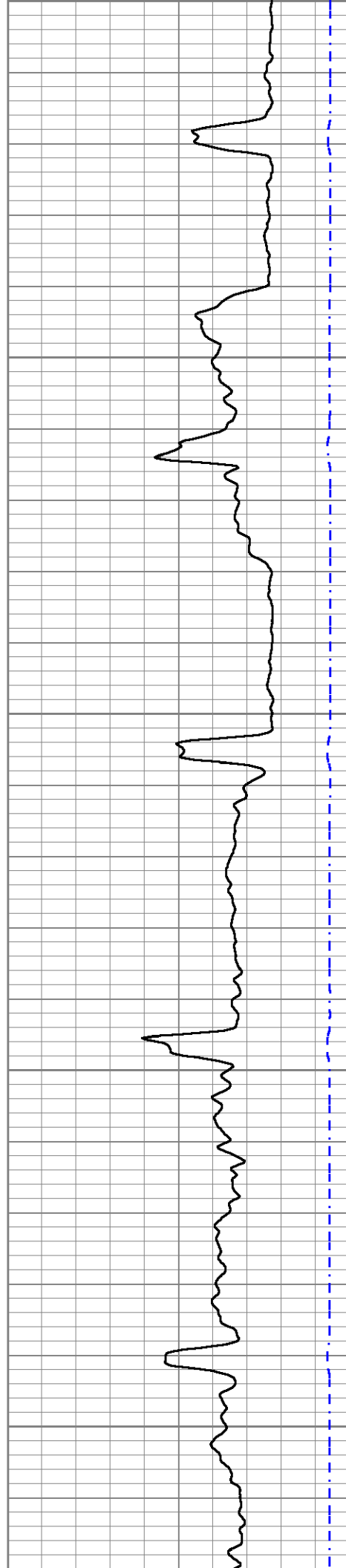
4100

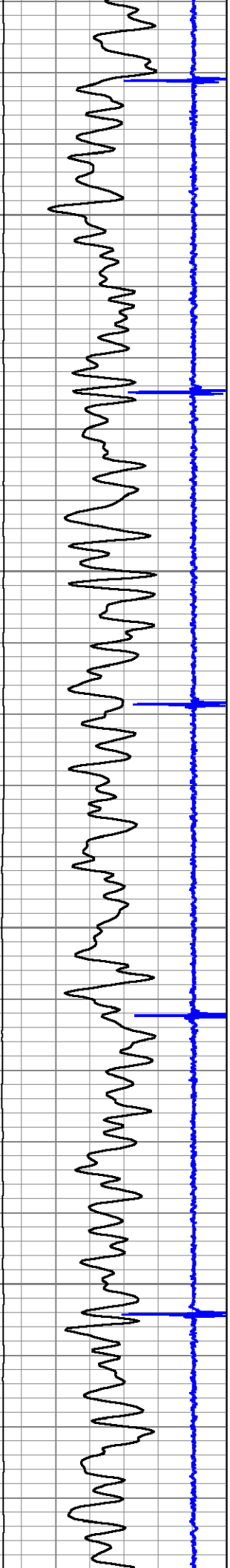
4150





4150
4200
4250
4300
4350



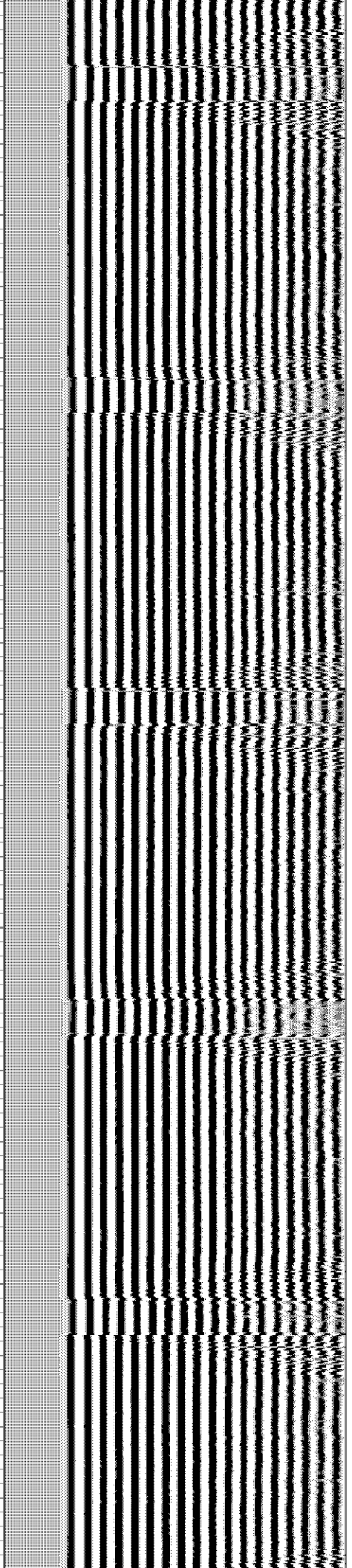
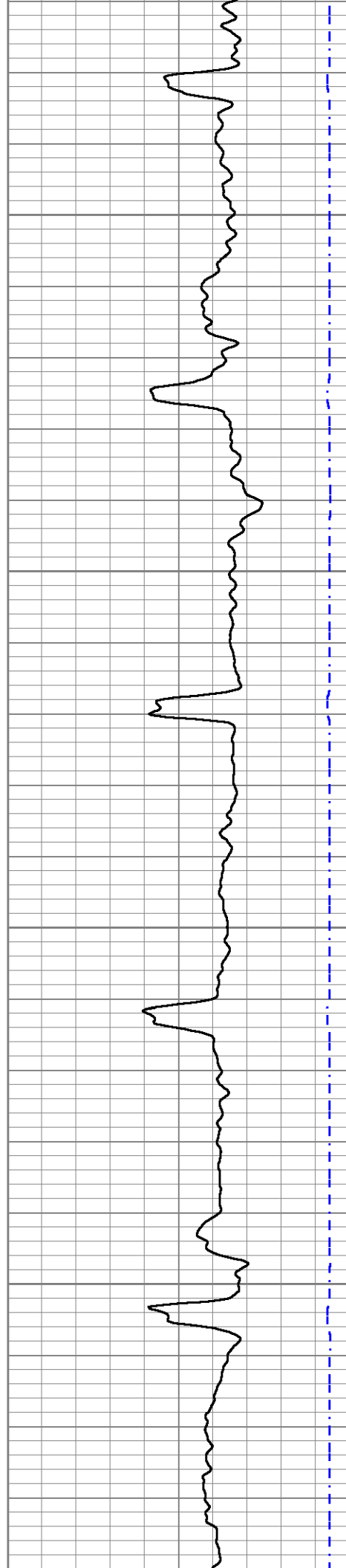


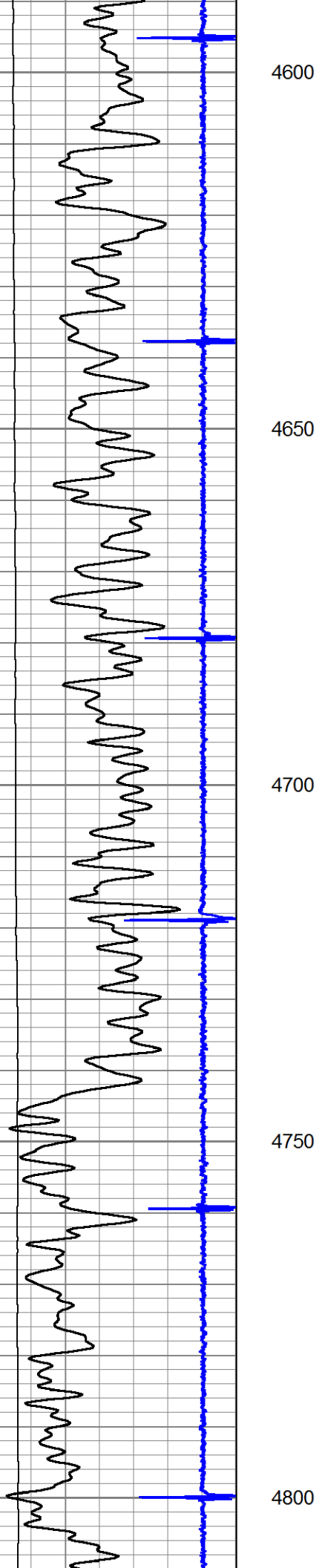
4400

4450

4500

4550





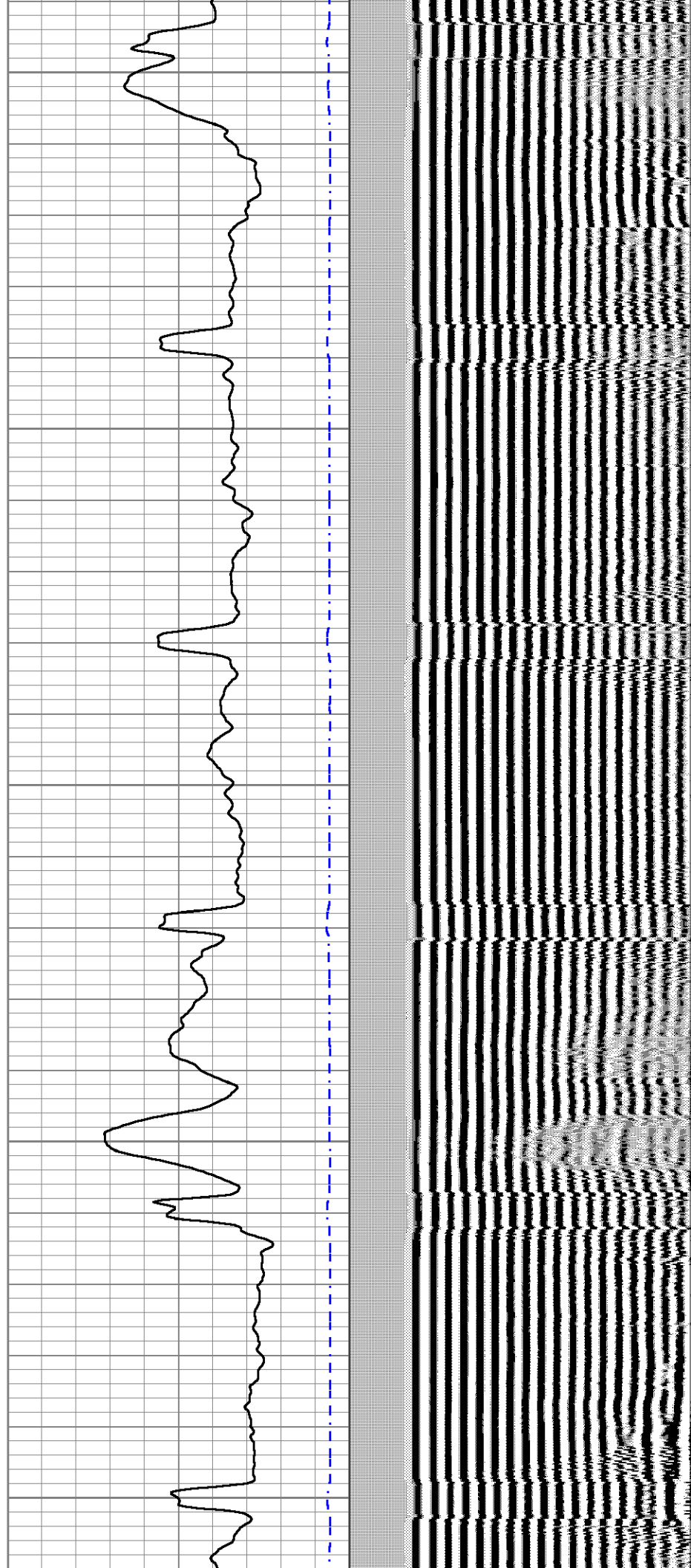
4600

4650

4700

4750

4800



4600

4650

4700

4750

4800

