



Petrox Resources Inc.

12600 W Colfax Ave
Suite C-440
Lakewood, CO 80215

(970) 878-5594 (office)
(303) 803-3998 (Engineering)
(970) 260-6043 (Accounting)

October 25, 2021

Catherine Roy, Reclamation Specialist
Colorado Oil and Gas Conservation Commission
Archuleta County, Colorado

Re: Fosset Gulch Unit 9U#4 FIRR (9/13/2021)
API: 005-007-06235
Doc #: 693903670
Legal: T34N, R5W, Sec. 9U, SWSE
Archuleta County, CO

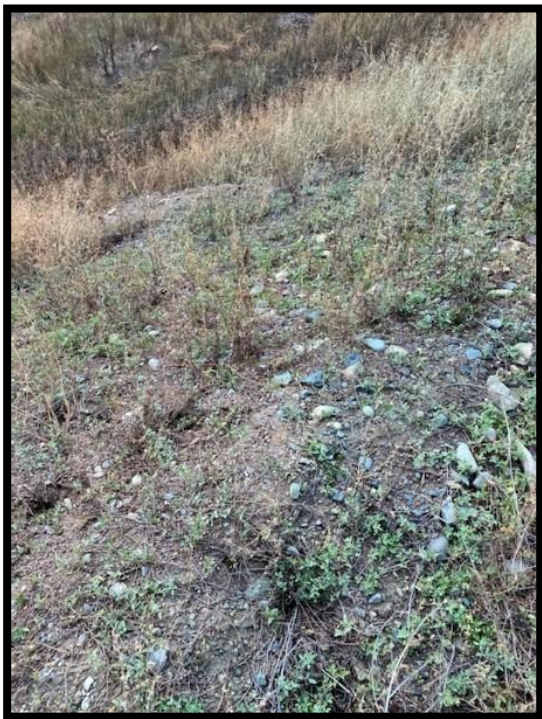
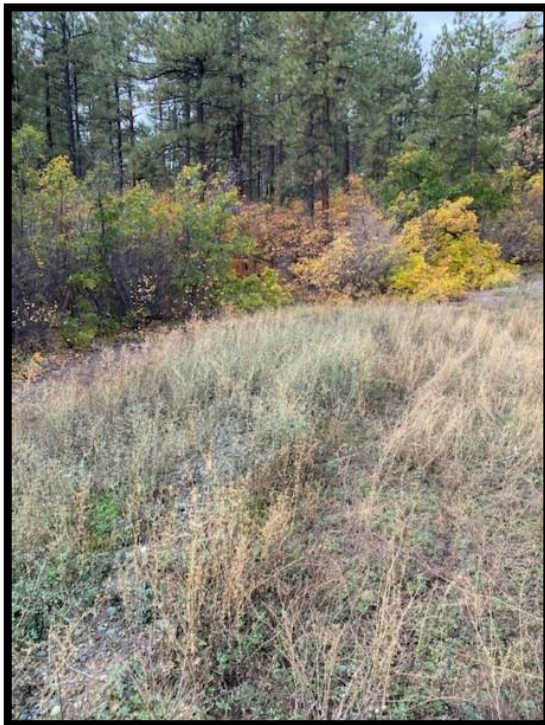
Field Inspection Form Resolution Photos

1. Remove and properly dispose of weed and cable debris
 - All Kochi weeds and cable were removed. Remaining weeds sprayed.



Notes: Cable was removed and hauled away. Kochi weeds removed and hauled away.
All remaining thistle on cut slope not previously sprayed in August, 2021 was sprayed.

2. Revegetation needs to be conducted within the interim reclamation areas, Control weeds in area.
- All weeds on cut and fill slope sprayed October 9th-10th, 2021. Approved San Juan National Forest Seed mix was spread. More seed will be spread after cattle are out of the area and also in Spring of 2022.



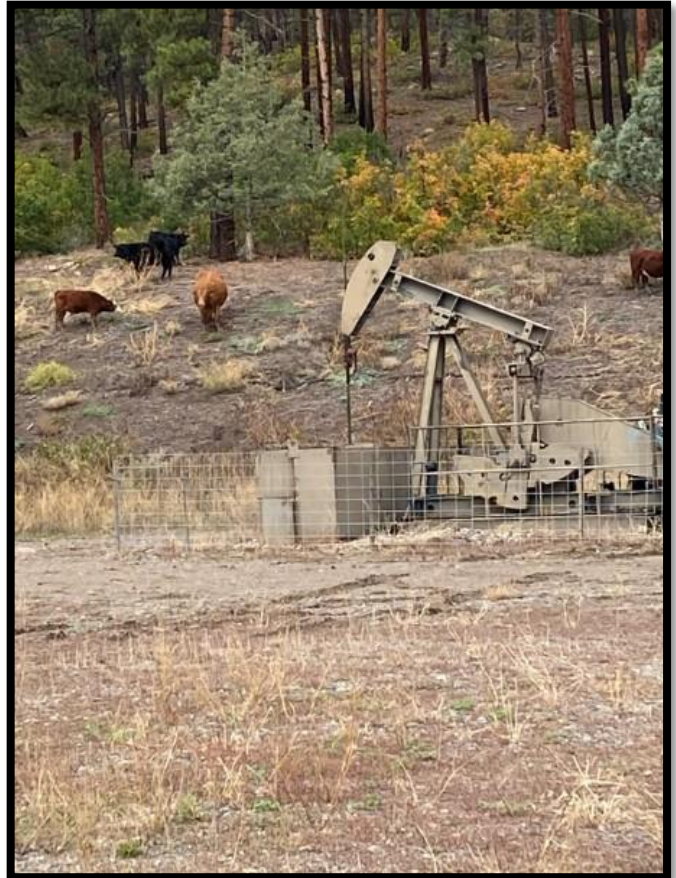


Notes: All noxious weeds including prickly lettuce, kochia, bindweed and musk thistle was sprayed on the fill slope and east side of pad in preparation for revegetation of pad on 10/9/2021. The San Juan Forest approved Surface Use Plan of Operations seed mix was spread and raked in. Petrox will monitor growth through fall 2021 and will add more seed as necessary Spring 2022.

3. Stormwater controls (BMPs) and Erosion Controls need to be installed to stabilize revegetating soils.
- According to the approved Surface Use Plan of Operations with the San Juan National Forest, Petrox is not permitted to fence pad or interim reclamation areas. With cattle in the area, control blankets or mulch will not be laid until cattle are out of the area to ensure that erosion control measures stay in place and are successful. However, waddles were installed in obvious drainage areas. Pictures below



Notes: Waddles were installed in drainage area on south east of cut slope. Cattle got into waddles within 12 hours of installation. Petrox will monitor when cattle are moved out and will reinstall all stormwater and install mulch at that time.



Notes: Cattle on the pad. Petrox decided that mulch would be added after cattle are out of the area to ensure that the cattle stay off the cut and fill slope to ensure that revegetation proceeds successfully.