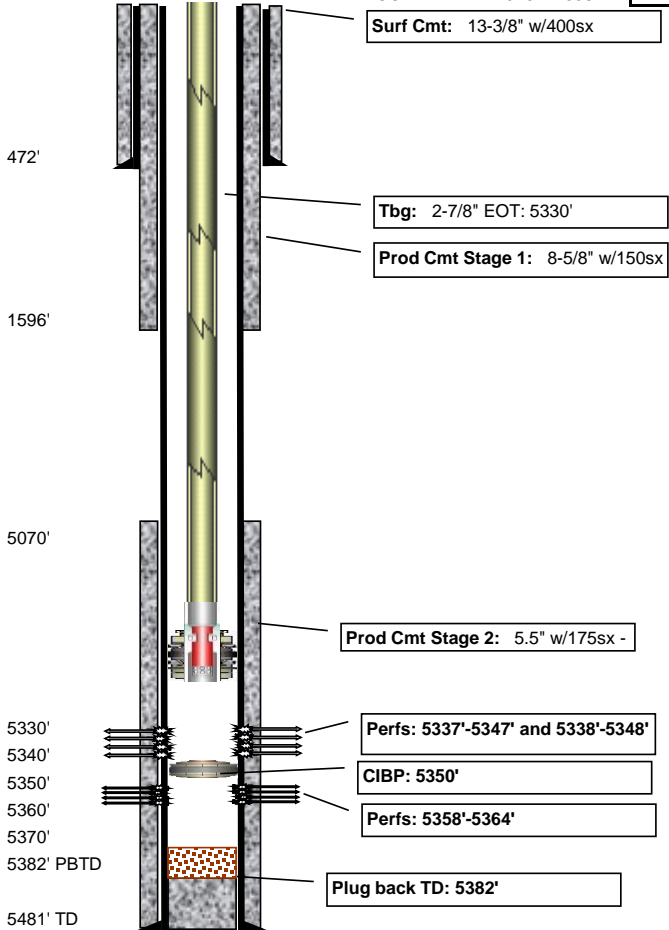


Betty #1

Pumping

API #	Lease ID	Permit #	County	KB	GL	Current production	Sec N/S	Sec E/W	Sec
05-017-07757			Chyenne	4302'	4314'		T15S	R44W	6
	Pumping Unit	Motor	State	TD	PBTD	Initial production	Lease N/S	Lease E/W	Blk
-KB = 12'			CO	5481'	5382'		660' FNL	660' FWL	



Perforations				
Top	Bottom	SPF	Stimulation	OPEN?
5337'	5347'			yes
5338'	5348'			yes
5358'	5364'			no

Casing				
Depth	Size	Wgt (#/ft)	Grade	Description
472'	13-3/8"	54		Surface
1596'	8-5/8"	24		Production Stage 1
5405'	5.5"		15.5	Production Stage 2

Cement			
Hole Size	Sacks	TOC	Description
17.5"	400	0'	Surface
12.25"	150	0'	Production Stage 1
7-7/8"	175	5070'	Production Stage 2

Tubing				
Description	Size	Length	Top	Bot
Tbg	2-7/8"	5330'		

Rods				
Description	Size	Length	Top	Bot
1.5" x 22' PR,				
1.75" x 12" liner, leave 12"				
4' 7/8" Sub	7/8"	4'		
70 7/8" rods	7/8"	1750'		
142 3/4" rods	3/4"	3550'		
Stab bar				
Gas Anchor				
2.5' x 2' x 20' pump				

Pump

Well Logs

Date	BOPD	MCFD	BWPD
------	------	------	------