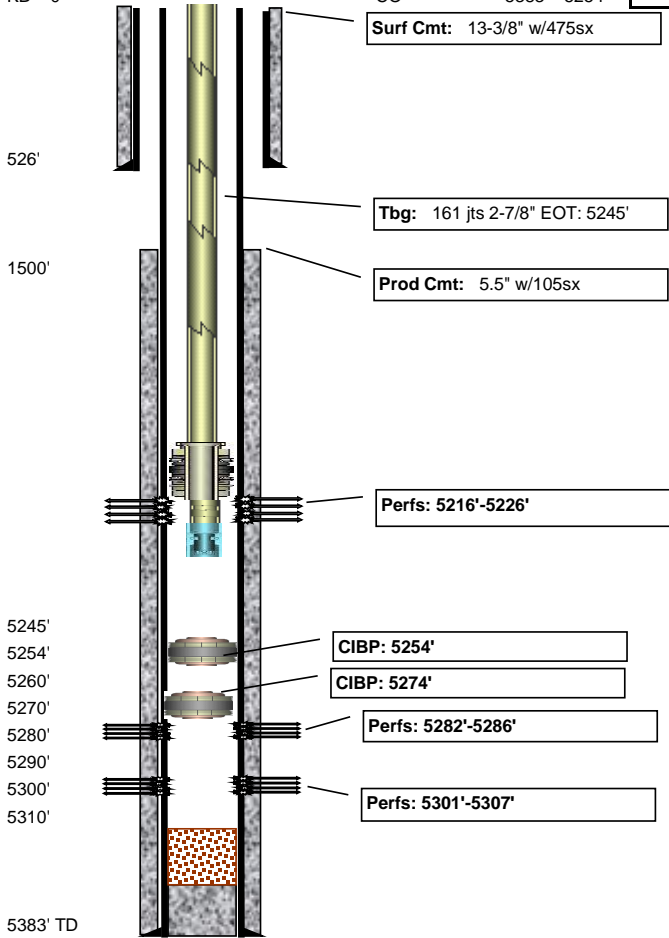


Betty #2

Pumping

API #	Lease ID	Permit #	County	KB	GL	Current production	Sec N/S	Sec E/W	Sec	
05-017-07787			Cheyenne				TWP 15S	RNG 44W	6	
Pumping Unit			Motor	State	TD	PBTD	Initial production	Lease N/S	Lease E/W	Blk
KB = 0'				CO	5383'	5254'		630' FSL	2030' FEL	



Perforations					
Top	Bottom	SPF	Stimulation	OPEN?	
5216'	5226'			yes	
5282'	5286'			no	
5301'	5307'			no	

Casing				
Depth	Size	Wgt (#/ft)	Grade	Description
526'	13-3/8"	54		
5382'	5.5"	15.5		

Cement			
Hole Size	Sacks	TOC	Description
17.5"	475	0'	
7-7/8"	105	1500'	

Tubing					
Description	Size	Length	Top	Bot	
Tubing 161 jts	2-7/8"				
TAC					
Tubing 4 jts	2-7/8"				
Seating Nipple					
MA		3'		5245'	

Rods					
Description	Size	Length	Top	Bot	
22 polished Rod	1.5"				
16' of Pony Rods	7/8"				
70 7/8" Rods	7/8"				
122 3/4" Rods	3/4"				
15 1" Rods	1"				
2' Rod guide					
2.5"x1.25"x20' Pump		0.75"			

Pump
Well Logs

Date	BOPD	MCFD	BWPD
------	------	------	------