



Summit Oil and Gas

PLUG & ABANDON POST JOB REPORT

FAYE #1 05-123-14643
S:13 T:7N R:59W Weld CO

CallSheet #: 78462
Proposal #: 55220



PLUG & ABANDON Post Job Report

Attention: Sam Bradley | (970) 593-8626 | sb@s-companies.com

Summit Oil and Gas

PO Box 983038 | Park City, UT 84098

Dear Sam Bradley,

Thank you for the opportunity to provide cementing services on this well. American Cementing strives to achieve complete customer satisfaction. If you have any questions regarding the services or data provided, please contact American Cementing at any time.

Sincerely,

Scott Pollard

Senior Account Manager | (303) 249-6761 | scott.pollard@americacementing.com

Field Office 1716 E Allison Rd, Cheyenne, WY 82007
Phone: (307) 414-0049

Job Details & Summary

Geometry

Type	Function	OD (in)	ID (in)	Weight (lb/ft)	Top (ft)	Bottom (ft)	Excess (%)
Casing	Outer	8.625	8.097	24	0	387	0
Open Hole	Outer		6.75		387	1286	25
Tubing	Inner	2.875	2.441	6.4	0	1286	0

Equipment / People

Unit Type	Unit	Power Unit
Cement Trailer Float	CTF-193	TRC(TRB)-730
Cement Utility Float	CUF(FIF)-162	LDV-049
Cement Pump Float	CPF-184	TRS-105

Timing

Event	Date/Time
Call Out	9/23/2021 17:00
Depart Facility	9/23/2021 21:15
On Location	9/23/2021 23:00
Rig Up Iron	9/23/2021 23:30
Job Started	9/24/2021 00:30
Job Completed	9/24/2021 02:16
Rig Down Iron	9/24/2021 02:30
Depart Location	9/24/2021 03:00

General Job Information

Metrics	Value
Well Fluid Density	8.4 lb/gal
Well Fluid Type	Water
Rig Circulation Vol	10 bbls
Rig Circulation Time	0.1 hours
Calculated Displacement	3.8 bbls
Actual Displacement	3.5 bbls
Total Spacer to Surface	0 bbls
Total CMT to Surface	2 bbls
Well Topped Out	Yes
Top Out Volume	3 bbls

Job Details

Metrics	Value
Flare Prior to Job	No
Flare During Job	No
Flare at End of Job	No
Well Full Prior to Job	Yes
Well Fluid Density Into Well	8.4 lb/gal
Well Fluid Density Out of Well	8.4 lb/gal

Job Details (cont.)

Metrics	Value
BHCT	89 °F
BHST	102 °F

Water Analysis

Metrics	Value	Recommended
Water Source	Rig Tank	
Temperature	65 °F	50-80 °F
pH Level	7	5.5-8.5
Chlorides	0 mg/L	0-3000 mg/L
Total Alkalinity	100	0-1000
Total Hardness	200 mg/L	0-500 mg/L
Carbonates	0 mg/L	0-100 mg/L
Sulfates	<200 mg/L	0-1500 mg/L
Potassium	150 mg/L	0-3000 mg/L
Iron	0 mg/L	0-300 mg/L

Circulation

Lost Circulation Experienced
No

Job Execution Information

Fluid	Product	Function	Density (lb/gal)	Yield (ft ³ /sk)	Water Rq. (gal/sk)	Water Rq. (gal/bbl)	Volume (sks)	Volume (bbl)	Designed Top (ft)
1	PLUG SLURRY : Surface Plug - 1286	Plug	15.80	1.15	5.00		364.00	74.43	0
2	DISPLACEMENT : Final	DisplacementFinal	8.34			42.00		0.00	0

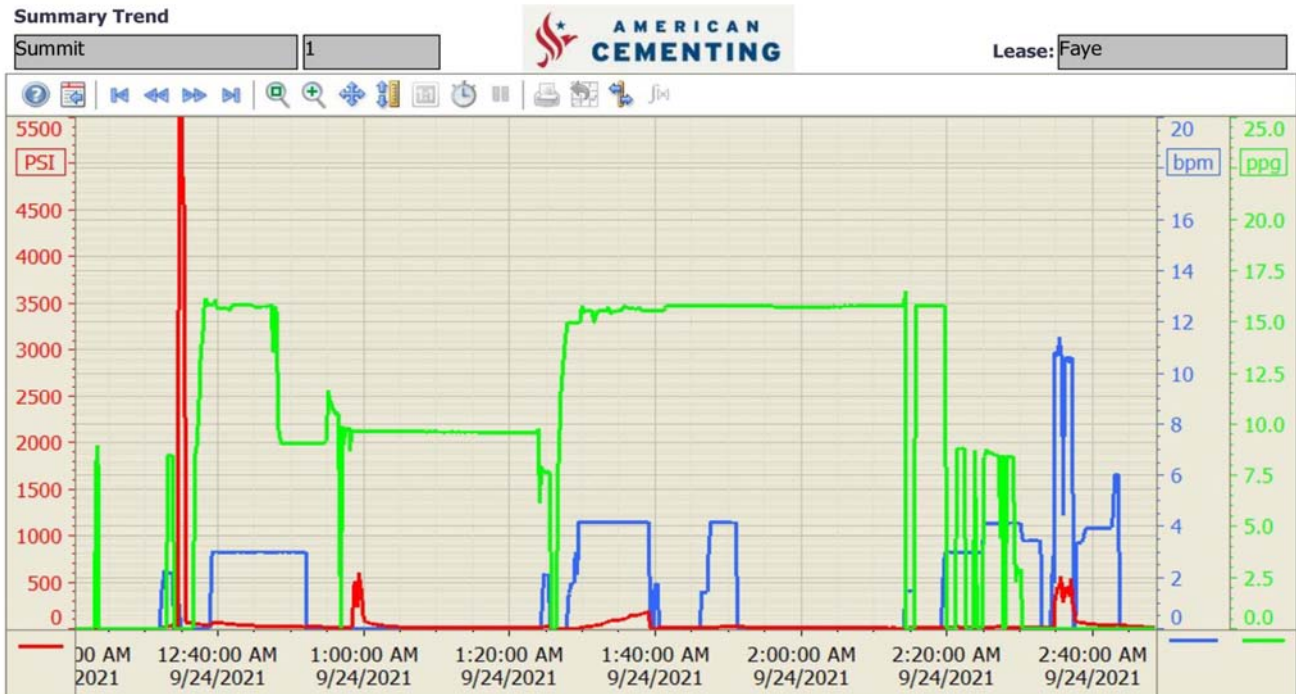
Job Fluid Details

Fluid	Type	Fluid	Product	Function	Conc.	Uom
1	Plug	PLUG SLURRY : Surface Plug - 1286	CLASS G	Cement	100.00	%

Job Logs

Line	Event	Date (MM/DD/YY)	Time (HH:MM)	Density (lb/gal)	Pump Rate (bpm)	Pump Volume (bbls)	Pipe Pressure (psi)	Comment
1	Callot	9/23/2021	17:00					Customer calls with an O/L time of ASAP
2	Travel To Location	9/23/2021	21:15					Leave yard to travel to location
3	Arrive On Location	9/23/2021	23:00					Arrive on location, Pre rig up safety meeting with AC crew before spotting equipment
4	Spot Trucks	9/23/2021	23:10					
5	Rig Up	9/23/2021	23:30					Rig up water, bulk, and treating line
6	Safety Meeting	9/24/2021	00:10					Pre-job safety meeting with AC Crew, Rig crew, and Company man
7	Fill Lines	9/24/2021	00:30	8.34	2	3	74	Fill lines with 3 bbls of fresh water
8	Pressure Test	9/24/2021	00:34	8.34	0	0	6000	Pressure test pumps and lines
9	Pump Cement	9/24/2021	00:38	15.8	3	126	56	Pump 125 sks of cement @15.8 ppg
10	Pump Displacement	9/24/2021	00:50	8.34	3	3.5	30	Pump 3.5 bbls of fresh water displacement
11	Shut Down	9/24/2021	00:52	8.34	0	0	0	Shut down, rig pulls 22 joints of tubing out of hole
12	Rig Up	9/24/2021	01:20					Rig up treating line back to the tubing
13	Fill Lines	9/24/2021	01:24	8.34	3	3	70	Pump 3 bbls of fresh water ahead of cement
14	Pump Cement	9/24/2021	01:27	15.8	4	42	120	Pump cement until we get to surface (238 sks)
15	Displace	9/24/2021	01:39	8.34	2	1	0	Pump 1 bbls to flush lines
16	Shut Down	9/24/2021	01:40					Shut down, rig pulls rest of tubing out of hole
17	Pump Cement	9/24/2021	02:15	15.8	2	1.5	3	Top off well with rest of cement (3 bbls)
18	Shut Down	9/24/2021	02:16					Shut down job complete
19	Safety Meeting	9/24/2021	02:25					Pre-rig down safety meeting
20	Rig Down	9/24/2021	02:30					Rig everything down
21	Leave Location	9/24/2021	03:00					

Pump Diagrams



9/24/2021 2:51:10 AM