



**RADIAL CEMENT  
BOND LOG  
GAMMA RAY/CCL**

Company ANADARKO PETROLEUM CORP.  
Well SARCHET JOHN E UNIT #1  
Field WATTENBERG  
County WELD  
State COLORADO

Company ANADARKO PETROLEUM CORP.  
Well SARCHET JOHN E UNIT #1  
Field WATTENBERG  
County WELD  
State COLORADO

Location: API #: 05-123-07389  
SEC 22 TWP 3N RGE 66W  
SW SW  
990' FSL & 990' FWL  
Permanent Datum GL  
Log Measured From KB=9'  
Drilling Measured From KB  
Elevation 4922'  
Other Services  
Elevation  
K.B. 4931'  
D.F. 4930'  
G.L. 4922'

Date 15 JANUARY 2021

Run Number 1  
Depth Driller 7980'  
Depth Logger 1570'  
Bottom Logged Interval 1570'  
Top Log Interval SURFACE  
Open Hole Size 7.875"  
Type Fluid H2O  
Density / Viscosity ~8.3#  
Max. Recorded Temp. 88\*  
Estimated Cement Top SEE LOG  
Time Well Ready ROA  
Time Logger on Bottom 1215  
Equipment Number 8049  
Location WINDSOR  
Recorded By MCDANIEL  
Witnessed By SETH CHAPPELL

Borehole Record		Tubing Record					
Run Number	Bit	From	To	Size	Weight	From	To
1	1.225"	KB	575'	2.375"	4.7#	KB	7826'
2	7.875"	575'	7980'				

Casing Record Size 8.625" Wgt/Ft 24# Top KB Bottom 575'  
Surface String  
Prot. String  
Production String 4.50" 11.6# KB 7979'  
Liner

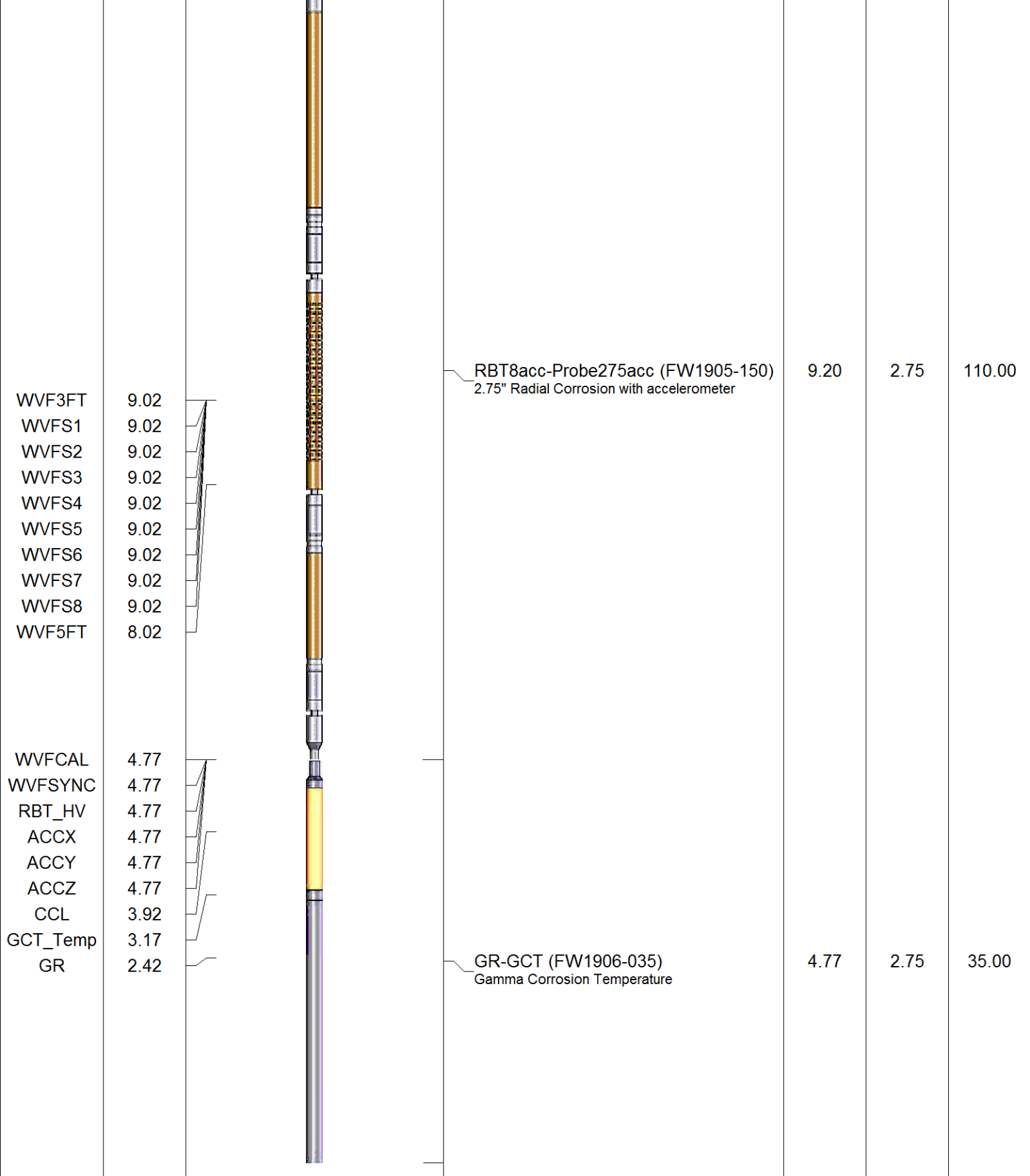
<<< Fold Here >>>

All interpretations are opinions based on inferences from electrical or other measurements and we cannot and do not guarantee the accuracy or correctness of any interpretation, and we shall not, except in the case of gross or willful negligence on our part, be liable or responsible for any loss, costs, damages, or expenses incurred or sustained by anyone resulting from any interpretation made by any of our officers, agents or employees. These interpretations are also subject to our general terms and conditions set out in our current Price Schedule.

**Comments**

**LOG RAN W/ 500 PSI @ SURFACE  
ZEROED LOG AT GROUND LEVEL  
FREE PIPE CAL PERFORMED @ 1495'  
SHOP CAL PERFORMED ON 1/12/2021  
!!!!!!!!!!!!!! THANK YOU FOR CHOOSING CUTTERS WIRELINE SERVICE !!!!!!!!!!!!!!!**

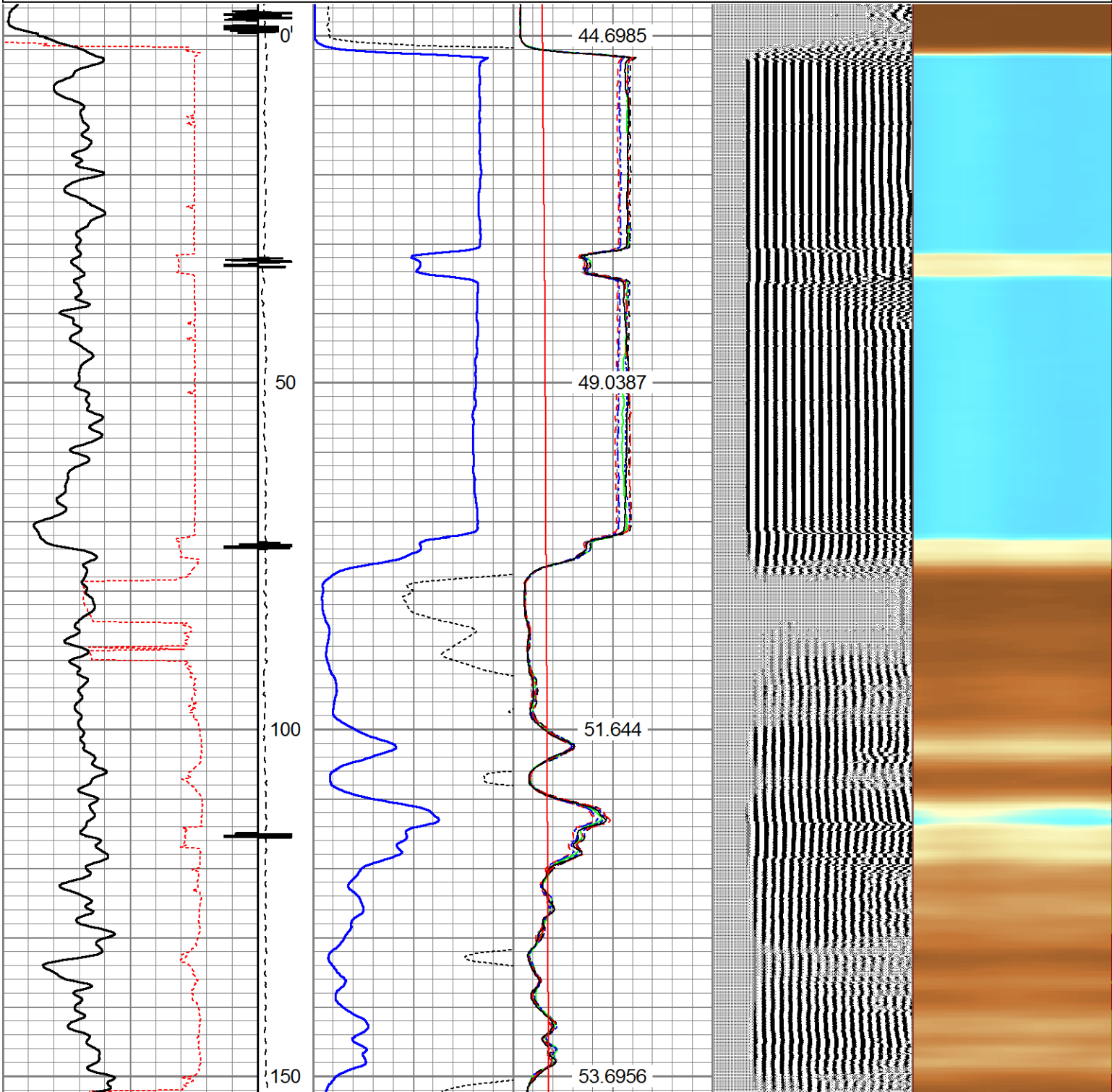
Sensor	Offset (ft)	Schematic	Description	Len (ft)	OD (in)	Wt (lb)
			1.4375CHD Titan Cable Head 1 7/16	1.00	1.44	10.00

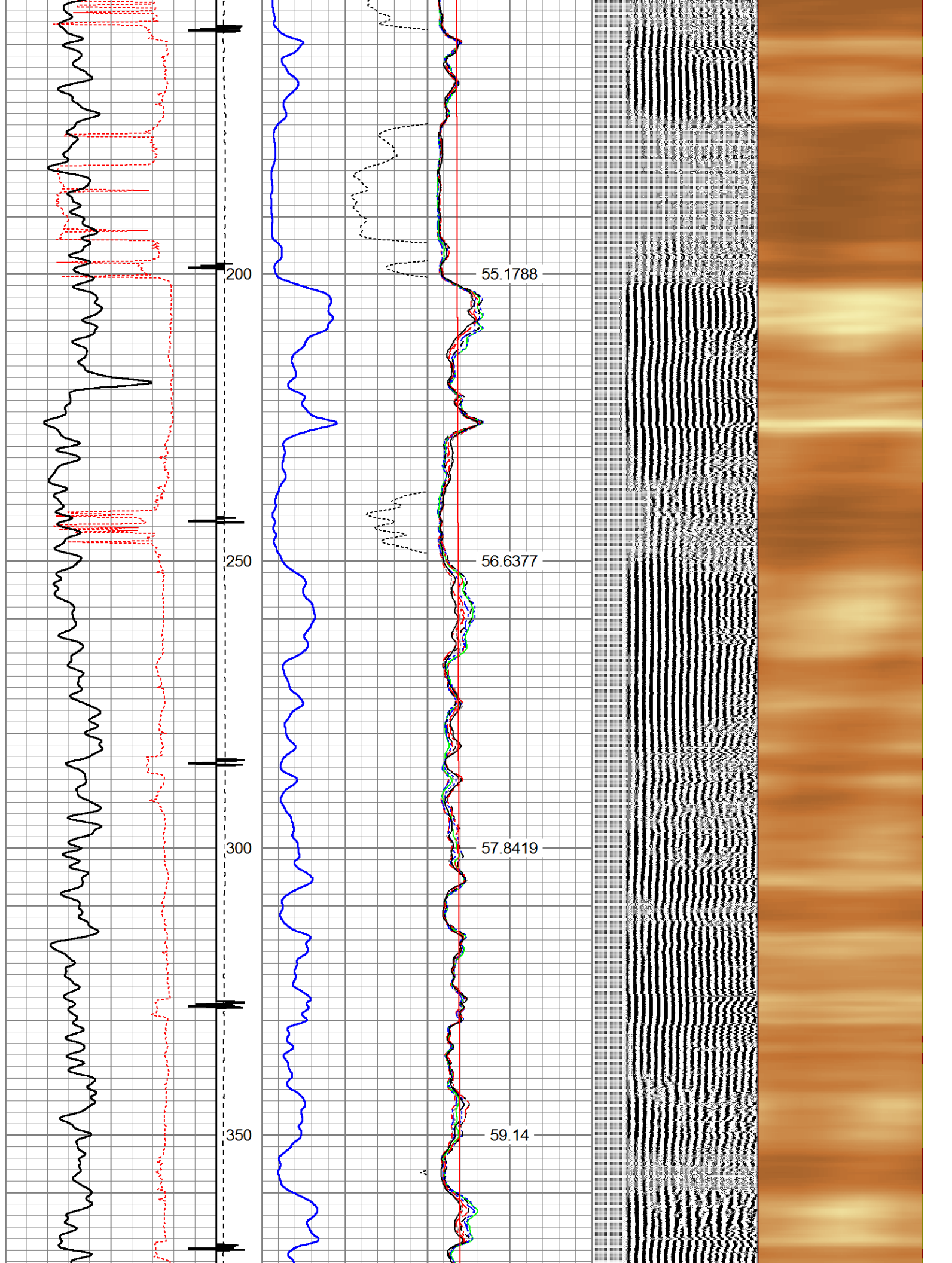


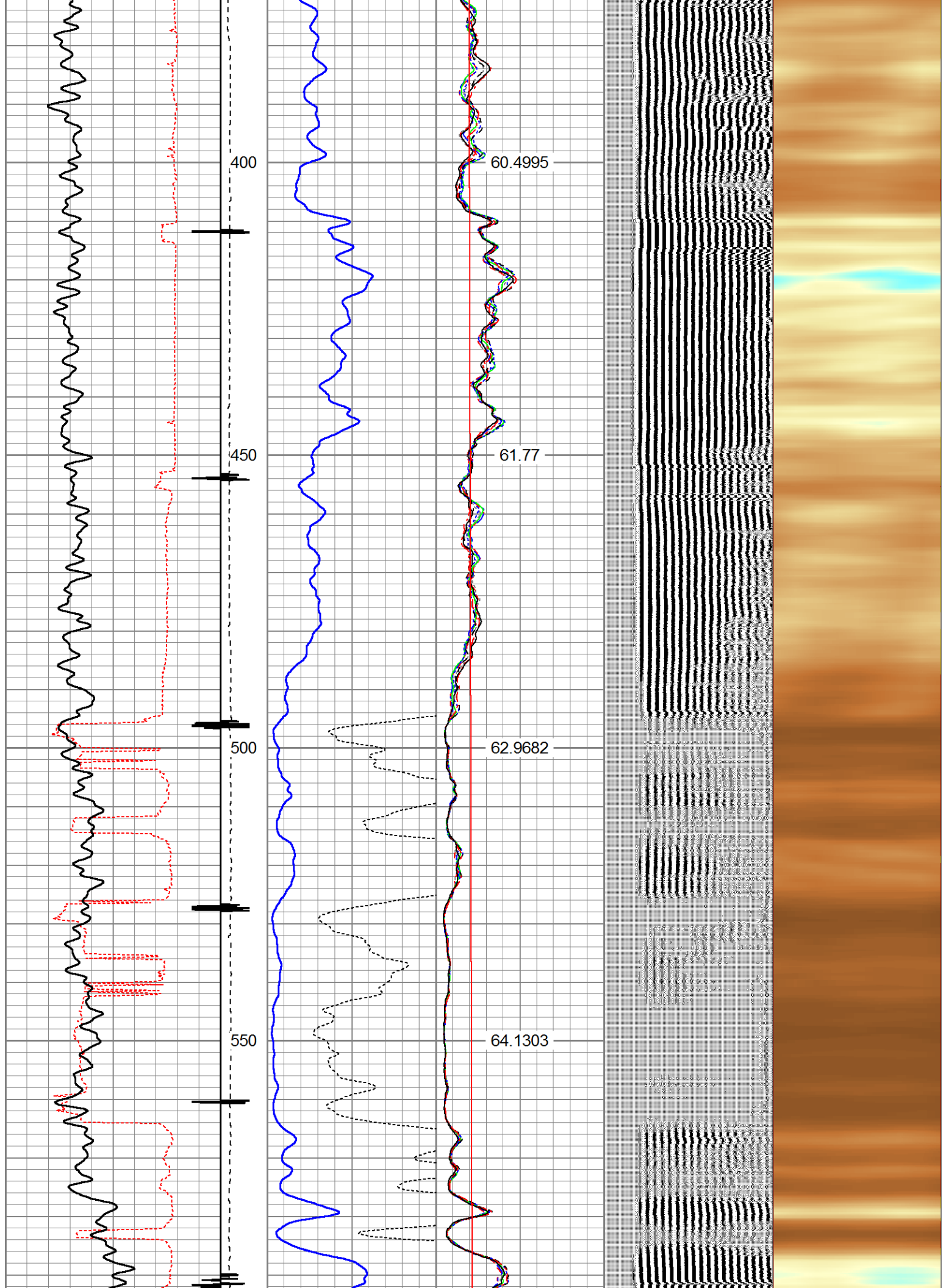
Dataset: 0512307389\_sarchet,johneunit#1\_oxy.db: field/well/run1/pass3  
 Total Length: 14.97 ft  
 Total Weight: 155.00 lb  
 O.D.: 2.75 in

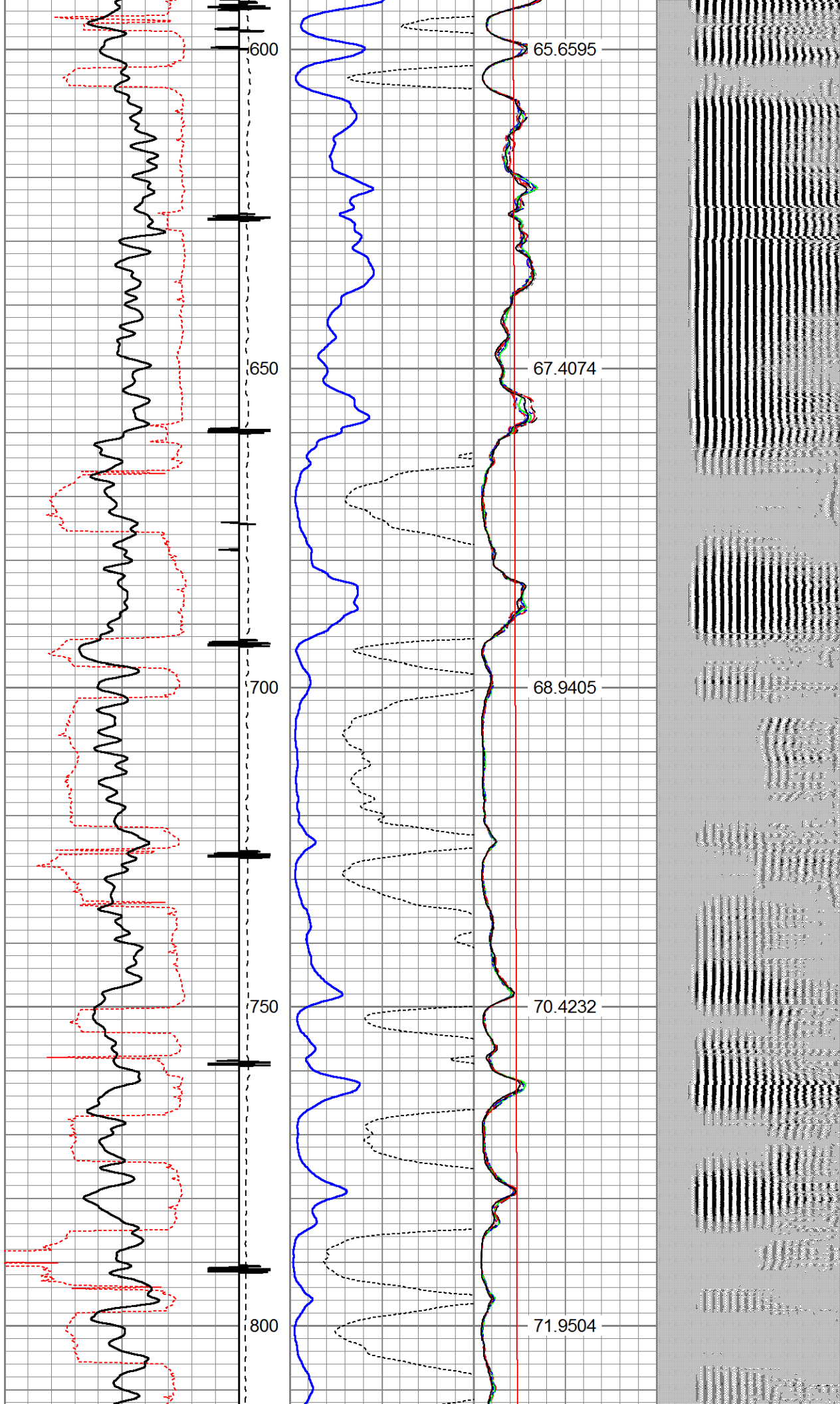
Database File: 0512307389\_sarchet,johneunit#1\_oxy.db  
 Dataset Pathname: pass3  
 Presentation Format: rbl55  
 Dataset Creation: Fri Jan 15 12:11:43 2021 by Log 7.0 B1  
 Charted by: Depth in Feet scaled 1:240

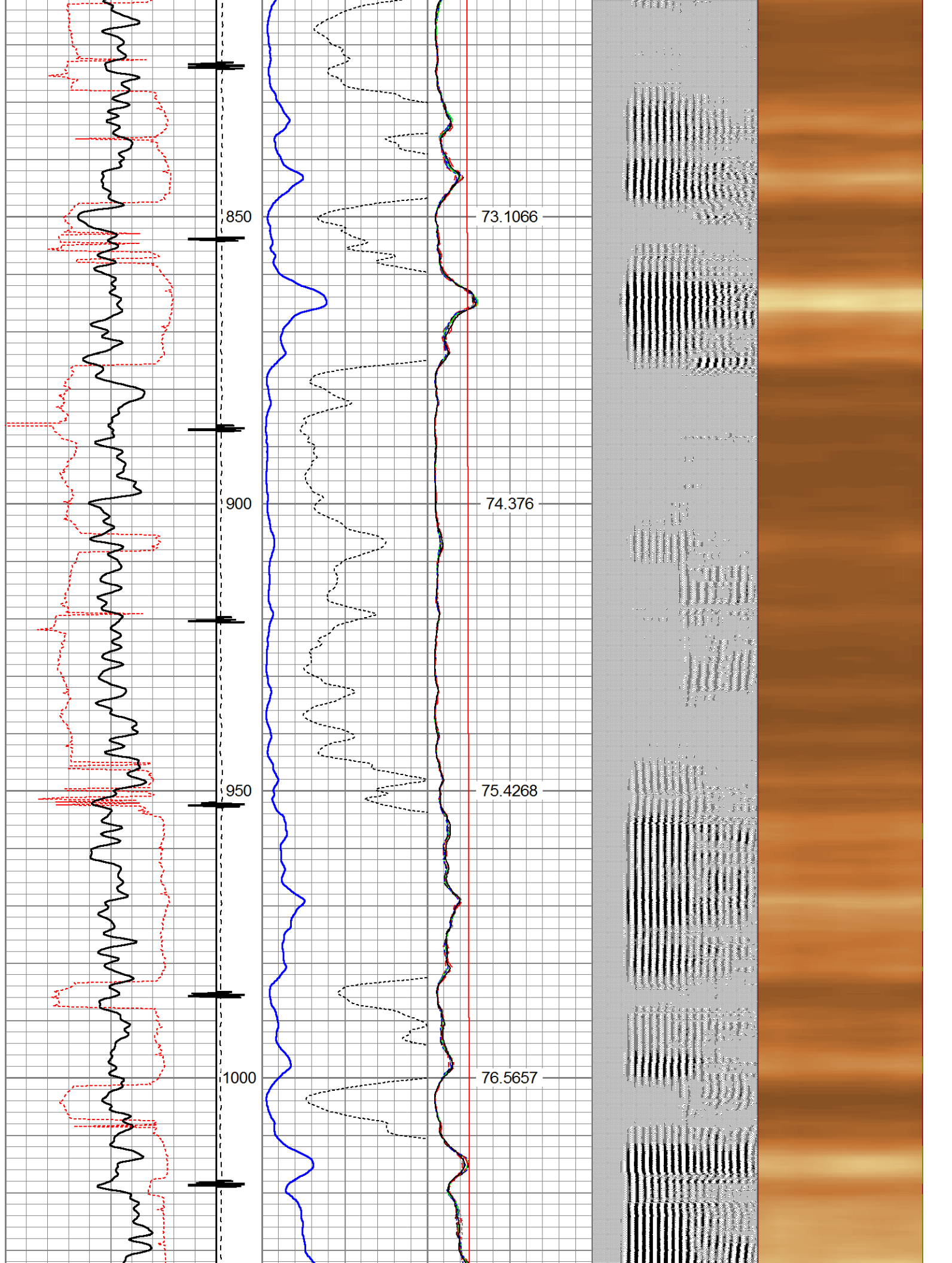
325	TT (usec)	225	LTEN	0	Amplitude (mV)	100	-5	AMPS2	150	200	VDL	1200	Cement Map
0	GR (GAPI)	200	(lb)	0	Amplified Amplitude	10	-5	AMPS3	150				1
			CCL <sup>000</sup>	0	(mV)	10	-5	AMPS4	150				100
							-5	AMPS5	150				
							-5	AMPS6	150				
							-5	AMPS7	150				
							-5	AMPS8	150				
							-5	AMPS1	150				
								GCT_Temp					
							0	(degF)	300				
								GCT_Temp					
								(degF)					

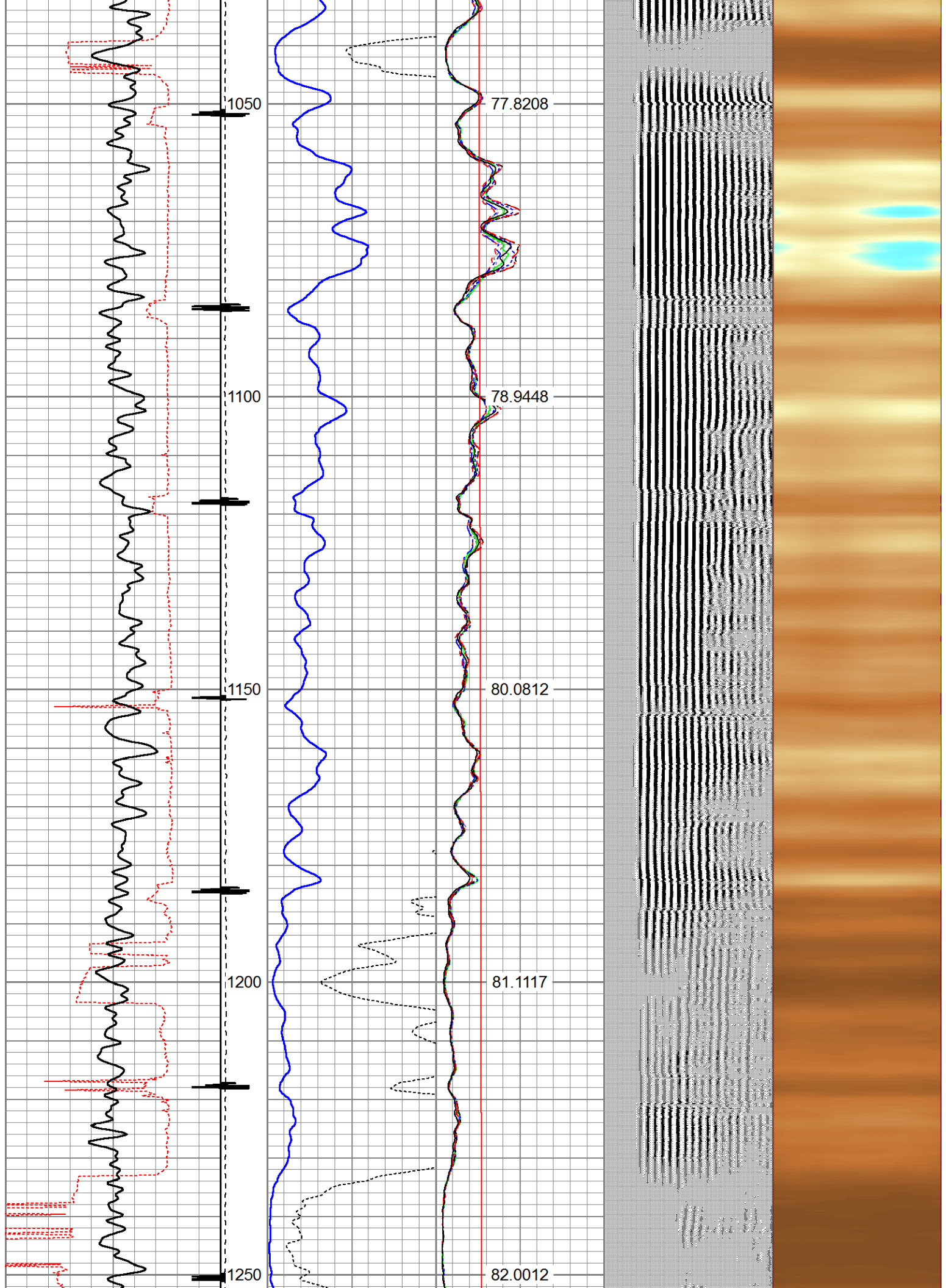


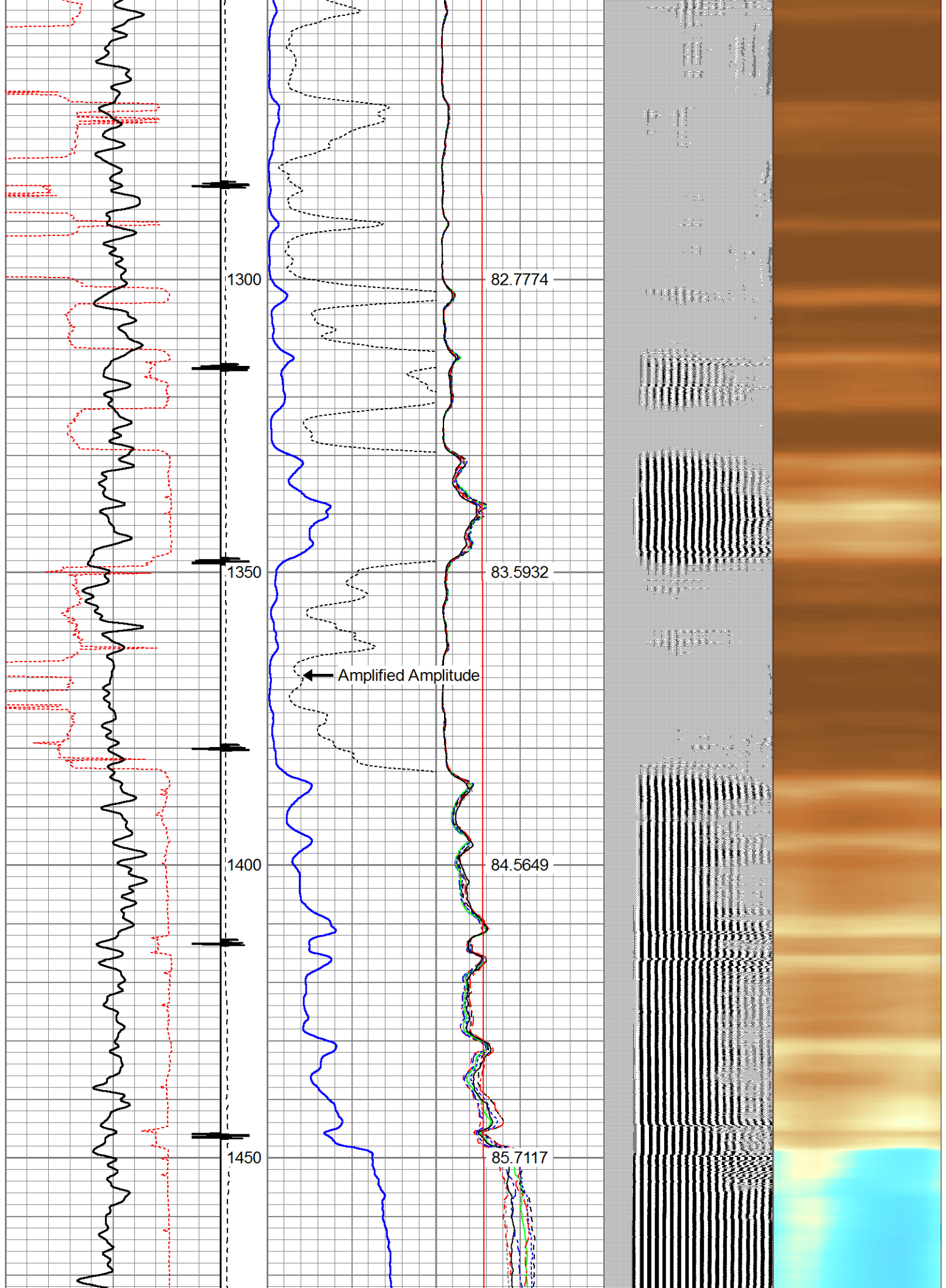


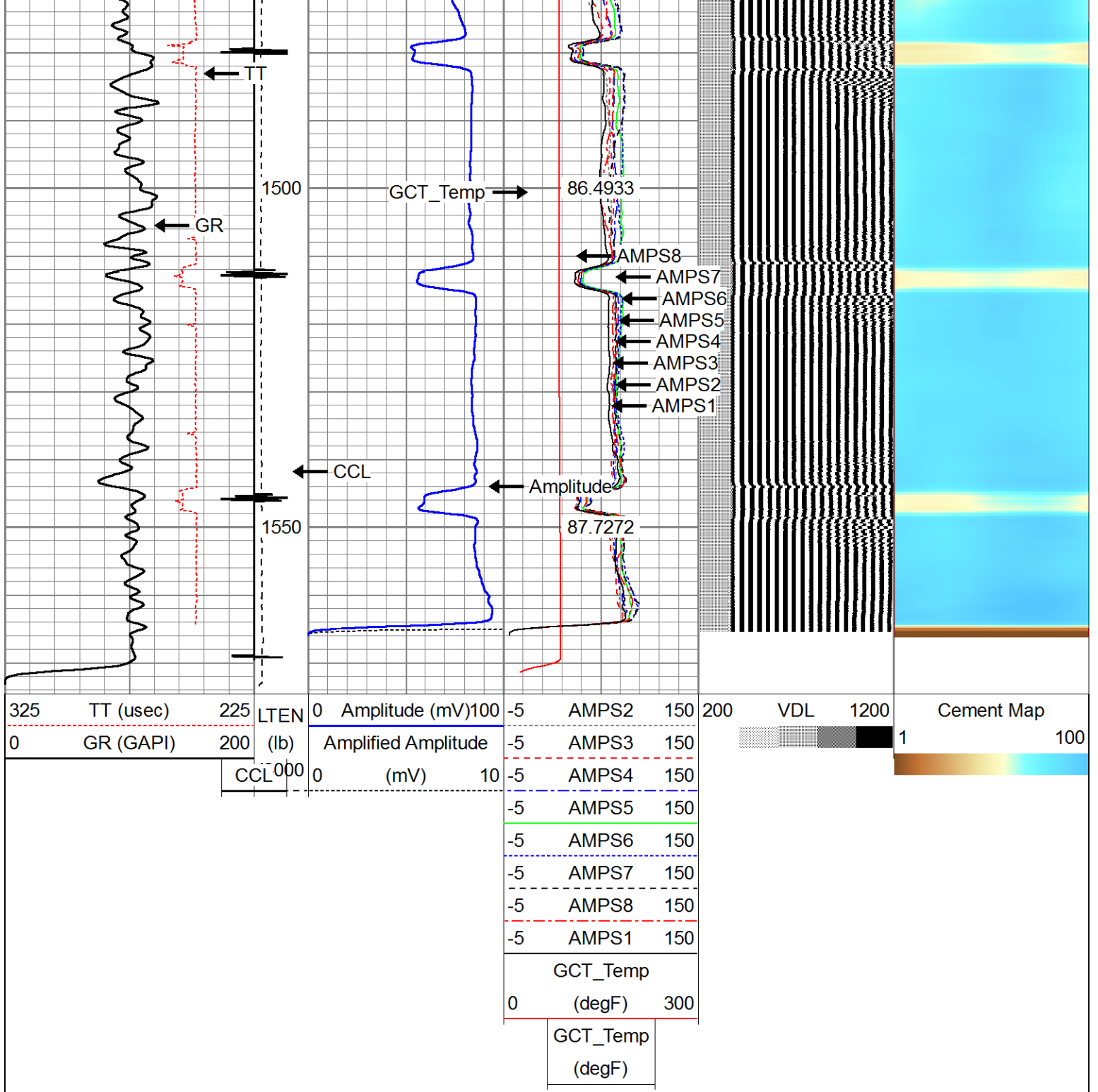












Calibration Report

Database File: 0512307389\_sarchet.johneunit#1\_oxy.db  
 Dataset Pathname: pass3  
 Dataset Creation: Fri Jan 15 12:11:43 2021 by Log 7.0 B1

Gamma Ray Calibration Report

Serial Number: FW1906-035  
 Tool Model: GCT  
 Performed: Sun Jun 13 13:33:21 1993  
 Calibrator Value: 1.0 GAPI  
 Background Reading: 0.0 cps  
 Calibrator Reading: 1.0 cps

## Segmented Cement Bond Log Calibration Report

Serial Number: FW1905-150

Tool Model: Probe275acc

Calibration Casing Diameter: 4.500 in

Calibration Depth: 1495.333 ft

Master Calibration, performed Fri Jan 15 12:09:55 2021:

	Raw (v)		Calibrated (mv)		Results	
	Zero	Cal	Zero	Cal	Gain	Offset
3'	0.000	0.531	0.000	81.196	152.956	-0.000
CAL	0.004	0.819				
5'	0.000	0.516	0.000	81.196	157.322	-0.000
SUM						
S1	0.000	0.373	0.000	81.000	217.367	-0.001
S2	0.000	0.583	0.000	81.000	139.026	-0.000
S3	0.000	0.560	0.000	81.000	144.657	-0.000
S4	0.000	0.546	0.000	81.000	148.410	-0.000
S5	0.000	0.534	0.000	81.000	151.548	-0.000
S6	0.000	0.544	0.000	81.000	148.762	-0.000
S7	0.000	0.564	0.000	81.000	143.583	-0.000
S8	0.000	0.585	0.000	81.000	138.434	-0.000

Internal Reference Calibration, performed Wed Dec 31 17:00:00 1969:

	Raw (v)		Calibrated (v)		Results	
	Zero	Cal	Zero	Cal	Gain	Offset
CAL	0.000	0.000	0.004	0.819	1.000	0.000

Air Zero Calibration, performed Mon Jul 06 14:23:34 2020:

	Raw (v)		Calibrated (v)		Results	
	Zero		Zero		Offset	
3'	0.000		0.000			0.000
5'	0.000		0.000			0.000
SUM						
S1	0.000		0.000			0.000
S2	0.000		0.000			0.000
S3	0.000		0.000			0.000
S4	0.000		0.000			0.000
S5	0.000		0.000			0.000
S6	0.000		0.000			0.000
S7	0.000		0.000			0.000
S8	0.000		0.000			0.000

## Inclinometer Calibration Report

Performed: Sun Jun 13 13:33:21 1993

	Low Read.	High Read.	Low Ref.	High Ref.	
X Accelerometer	0.00	1.00	0.00	1.00	gee
Y Accelerometer	0.00	1.00	0.00	1.00	gee

Z Accelerometer

0.00

1.00

0.00

1.00

gee



Company

ANADARKO PETROLEUM CORP.

Well

SARCHET JOHN E UNIT #1

Field

WATTENBERG

County

WELD

State

COLORADO