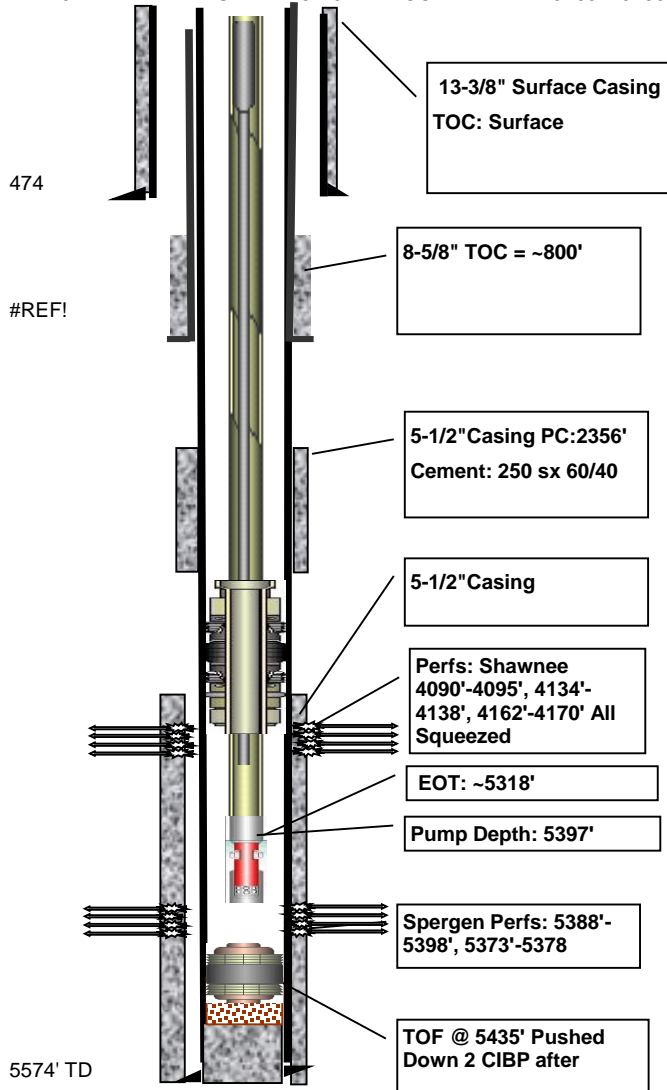


Pepper 1



Producer

API #	Lease ID	Permit #	County	KB	GL	Current production	Sec N/ Sec E/W	Sec	Formation
05-017-07782			Cheyenne	4794'	4788'	3 BOPD	#####		SPGN
Pumping Unit	Motor	State	TD	PBTD	Initial production	Lease	Lease E/W	Blk	Svy
KB = 6'	SENT 228 20	CO	5465'	5435'					



Perforations

Top	Bottom	SPF	Stimulation	OPEN?
4090	4095			N
4134'	4138'			N
4162'	4170'			N
5388	5398			Y
5373	5378			Y

Casing

Depth	Size	Wgt (# Grade)	Description
438	13-3/8"	48	
1700	8-8/5"	24	
5463	5-1/2"	15	

Cement

Casing	Sacks	TOC	Description	OD Hole	Washout
13-3/8"	425	Surf		17.5	
8-8/5"	100	800'		12.25	
5-1/2"	200	4400		7.875	

Tubing

Description	Size	Length	Top	Bot
126 Jts 2-7/8"		4095'	0'	4095'
TAC		3'	4095'	4098'
37 Jts. 2-7/8"		1203'	4098'	5301'
SN		1'	5301'	5302'
MA		16	5302'	5318'

Rods

Description	Size	Length	Top	Bot
22'x1-1/2" Polished Rod	22			-3 19
7/8" Rod Subs	12		19'	31'
73 - 7/8" Rods	1825		31'	1856'
141-3/4" Rods	3525'		1856'	5381'
Stabilizer Sub	2		5381'	5383'
2-1/2"x1-1/4"x16'	16'		5381'	5397'

Pump

2-1/2"x1-1/2"x16'