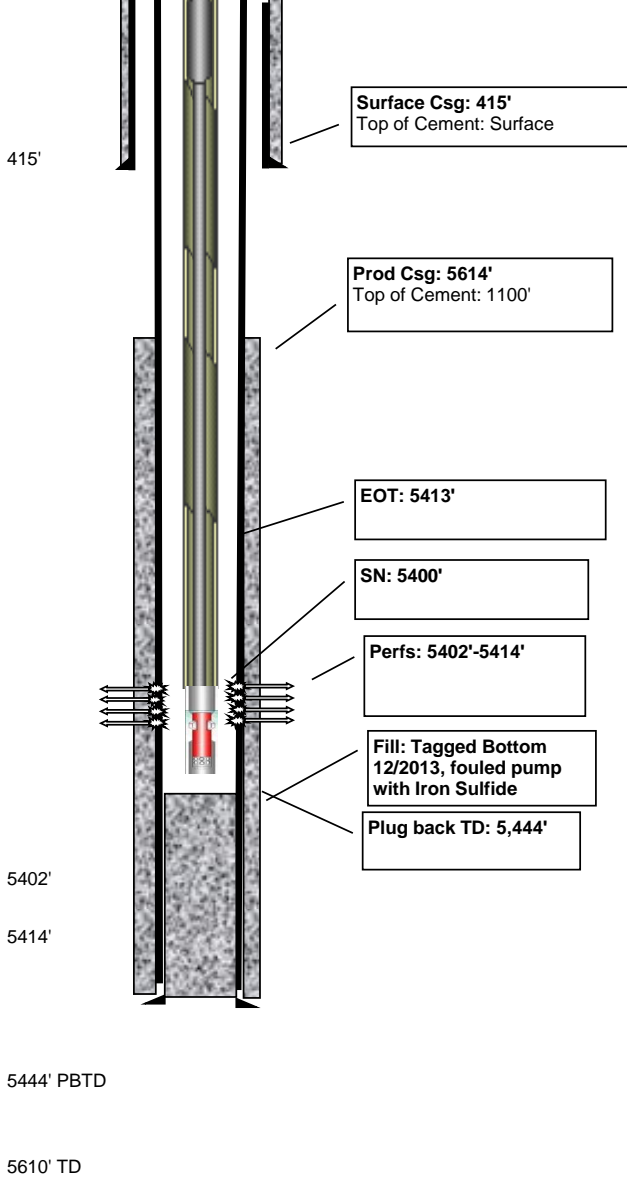


Dolfi 1-35

Pumping

Today - 10/21/2021

API #	Lease ID	Permit #	County	KB	GL	Current production		Sec N/S	Sec E/W	Sec
05-017-07507		95-996	Cheyenne	4356'	4344'	2.5 BOPD	4 BWPD	880' S	960' W	35-15S-45W
	Pumping Unit	Motor	State	TD	PBTD	Initial production		Lease N/S	Lease E/W	Blk
KB = 12'	JEN 160		CO	5610'	5444'	43 BOPD	TSTM 0 BWPD			



Perforations

Top	Bottom	SPF	Stimulation	OPEN?
5402'	5414'		750gal, MCA 15% acid	YES

Total = 12'
Casing

Depth	Size	Wgt (#)	Grade	Description
415'	8-5/8"	24		
5614'	5-1/2"	15.5		DV tool

Cement

Casing	Sacks	TOC	Description
8-5/8"	250	Surface	150 sx lite, 100 sx H
5-1/2"	275	1100; 4910	lower: 75 sx; upper: 200 sx lite

Tubing

Description	Size	Length	Top	Bot
170 jts tbg	2-7/8"	5290'	0'	5290'
Tbg Subs		11'	5290'	5301'
TAC		3'	5301'	5304'
2 jts tbg	2-7/8"	96'	5304'	5400'
SN		1'	5400'	5401'
MA		12'	5401'	5413'

Rods

Description	Size	Length	Top	Bot
Polished Rod		22'	-3'	19'
3 Ponies	7/8"	18'	19'	37'
86 Rods	7/8"	2150'	37'	2187'
117 Rods	3/4"	2925'	2187'	5112'
8 Rods	7/8"	200'	5112'	5312'
3 Sinker Bars	1-1/2"	75'	5312'	5387'
Pump	2-1/2"	16'	5387'	5403'

Pump

2-1/2" X 1-1/2" X 16' RWBC