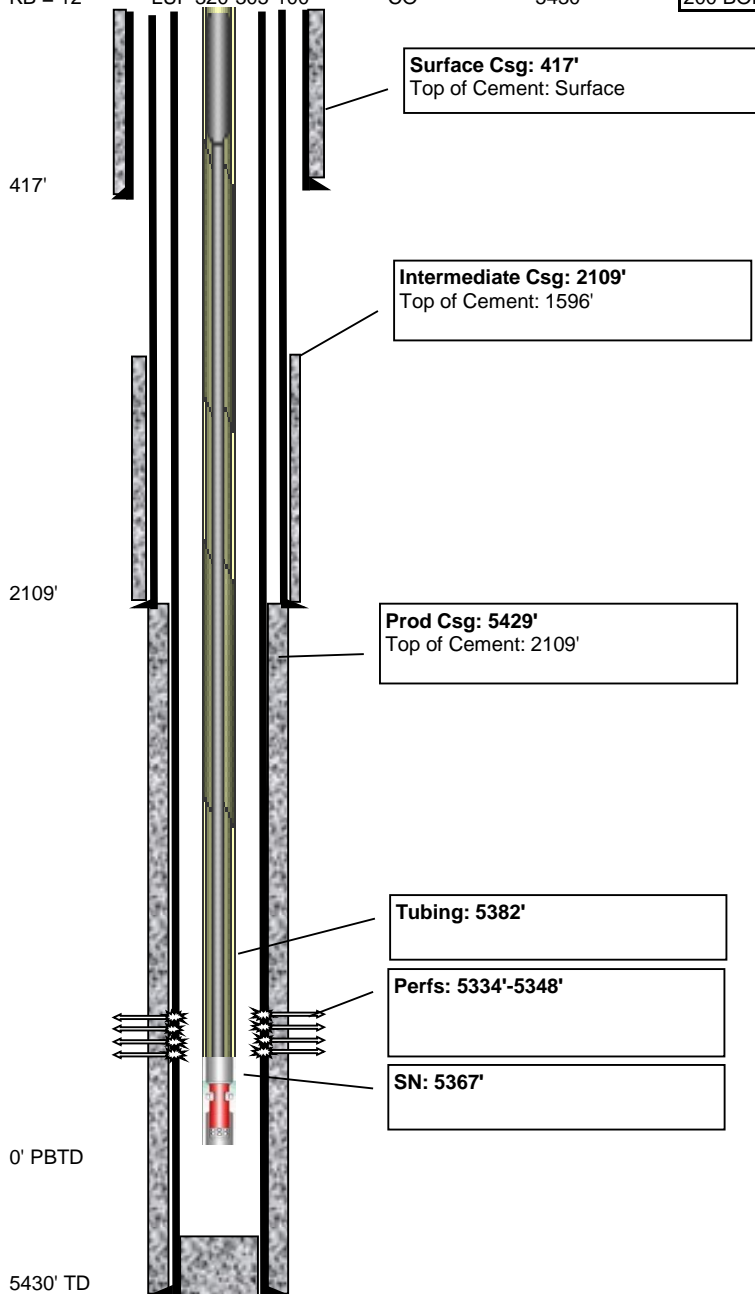


# State 1-30

# Pumping

Today - 10/21/2021

API #	Lease ID	Permit #	County	KB	GL	Current production		Sec N/S	Sec E/W	Sec
05-017-07501		95-778	Cheyenne	4310'	4298'	3.5 BOPD	450 BWPD	600' S	1980' W	30-14S-44W
Pumping Unit		Motor	State	TD	PBTD	Initial production		Lease N/S	Lease E/W	Blk
KB = 12'		LUF 320-305-100	CO	5430'		200 BOPD	0 MCFD 0 BWPD			



## Perforations

Top	Bottom	SPF	Stimulation	OPEN?
5334'	5348'		1250 gal FE 15%	YES

Total = 14'

## Casing

Depth	Size	Wgt (#)	Grade	Description
417'	13-3/8"	48		
2109'	8-5/8"	24		
5429'	5-1/2"	15.5		DV tool

## Cement

Casing	Sacks	TOC	Description
13-3/8"	300	surface	175 sx lite; 125 sx common
8-5/8"	75	1596'	75 sx common
5-1/2"	200	2109, 4900	lower: 75 sx common; upper: 125

## Tubing

Description	Size	Length	Top	Bot
167 jts tbg	2-7/8"	5221'	0'	5221'
Tubing Subs	2-7/8"	10'	5221'	5231'
TAC		3'	5231'	5234'
4 jts tbg		132'	5234'	5366'
SN		1'	5366'	5367'
MA		15'	5367'	5382'

## Rods

Description	Size	Length	Top	Bot
Polished Rod	1-1/4"	22'	-3'	19'
2 Pony Rods	7/8"	8'	19'	27'
98 Rods	7/8"	2450'	27'	2477'
112 Rods	3/4"	2800'	2477'	5277'
Sinker Bars	1-1/2"	75'	5277'	5352'
Pony Rod	1"	3'	5352'	5355'
Pump	2-1/2"	20'	5355'	5375'

## Pump

2-1/2" X 2" X 20' RWBC

State 1-30

Pumping

Today - 10/21/2021

API #	Lease ID	Permit #	County	KB	GL	Current production			Sec N/S	Sec E/W	Sec
05-017-07501		95-778	Cheyenne	4310'	4298'	3.5 BOPD	450 BWPD		600' S	1980' W	30-14S-44W
Pumping Unit		Motor	State	TD	PBTD	Initial production			Lease N/S	Lease E/W	Blk
KB = 12'	LUF 320-305-100		CO	5430'		200 BOPD	0 MCFD	0 BWPD			