



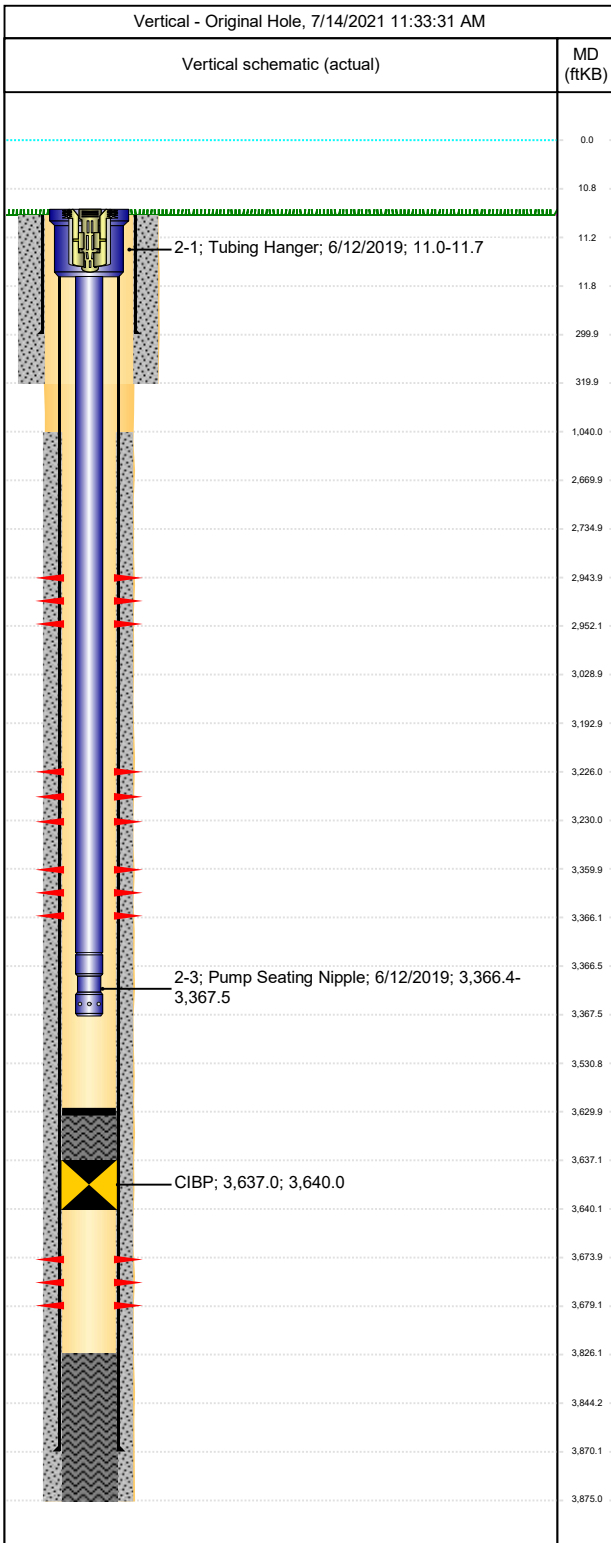
Downhole Well Profile

Well Name: **TOPAZ 8104-14D**

API/UWI 05045129720000	Surface Legal Location NWNW-S14-T8S-R104W-6PM	Field Name Bridle	License #	State/Province CO	Well Configuration Type Vertical
Original KB Elevation (ft) 5,128	KB-Tubing Head Distance (ft) 11	Spud Date 2/24/2007 00:00	Rig Release Date 3/20/2007 00:00	PBTD (All) (ftKB) Original Hole - 3,630.0	Total Depth All (TVD) (ftKB) Original Hole - 3,875.0

Type

Des	Make	Model	WP (psi)	Service	WP Top (psi)	Bore Min (in)



Casing Strings

Csg Des	OD (in)	Wt/Len (lb/ft)	Grade	Top Thread	Set Depth (ftKB)
Surface	8 5/8	24.00	J-55		300.0
Production	5 1/2	17.00	N-80		3,870.0

Perforations

Date	Top (ftKB)	Btm (ftKB)	Linked Zone
4/10/2007	2944	2952	Dakota Sand, Original Hole
4/3/2007	3226	3230	Morrison, Original Hole
4/3/2007	3360	3366	Morrison, Original Hole
3/28/2007	3674	3679	Entrada, Original Hole

Tubing Strings

Tubing Description	Run Date	String Length (ft)	Set Depth (ftKB)
Tubing - Production	6/12/2019	3,356.51	3,367.5

Item Des	Jts	Make	Model	OD (in)	Wt (lb/ft)	Grade	Len (ft)
Tubing Hanger				7 1/16			0.7
Tubing	10 6		T&C Upset	2 3/8	4.70	J-55	3354. 7
Pump Seating Nipple				2 3/8			1.1

Rod Strings

Rod Description	Run Date	String Length (ft)	Set Depth (ftKB)

Item Des	Jts	Make	Model	OD (in)	Wt (lb/ft)	Grade	Len (ft)