

Cementing Service Report

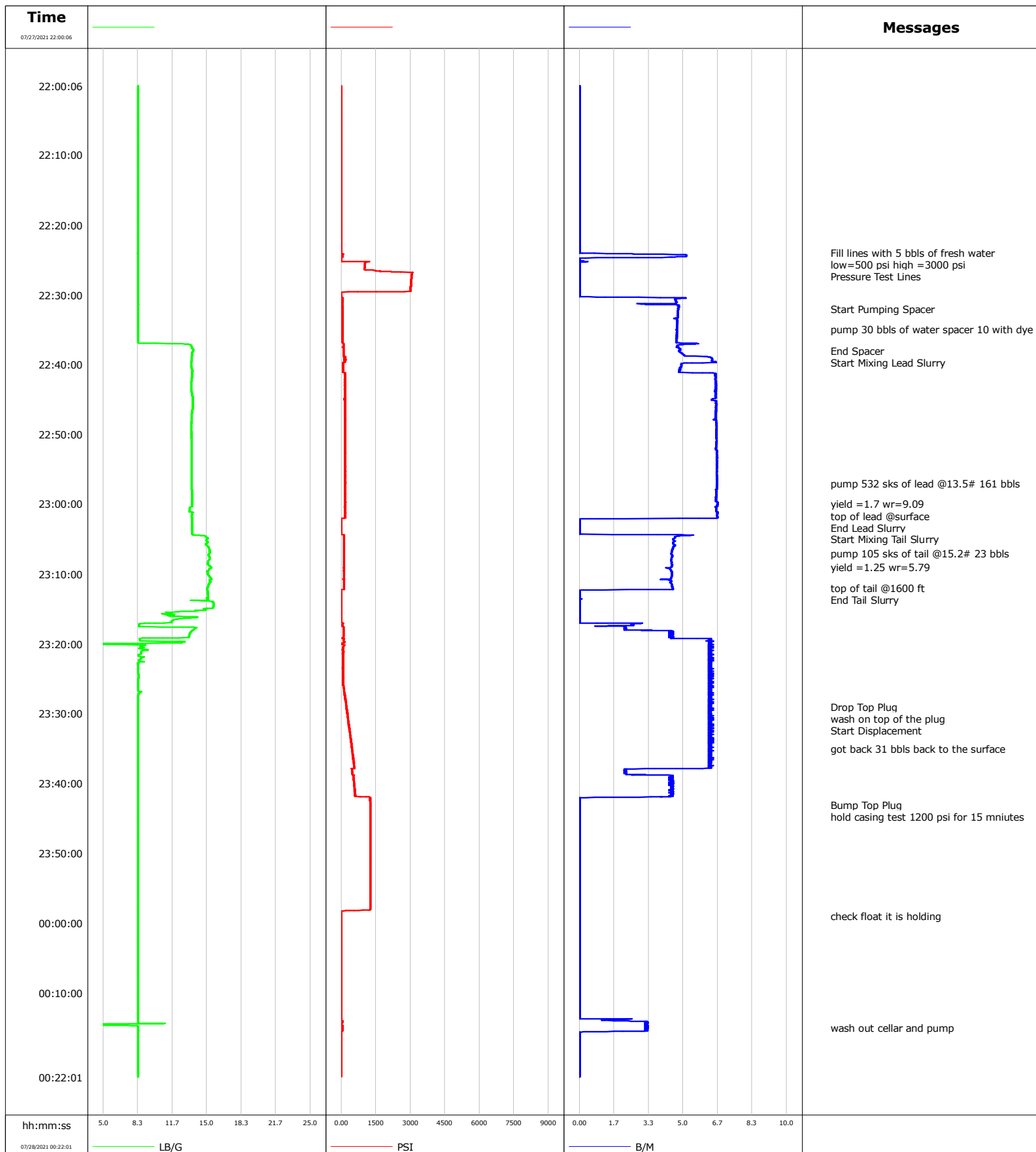
				Customer CHEVRON				Job Number 3232044							
Well RAMPART A33-730			Location (legal) SESE Sec 21, T6N, R64W			Schlumberger Location CWY			Job Start Jul/27/2021						
Field DJ		Formation Name/Type			Deviation deg		Bit Size in		Well MD 1926.0 ft		Well TVD ft				
County WELD		State/Province Colorado			BHP psi		BHST 103 degF		BHCT 85 degF		Pore Press. Gradient lb/gal				
Well Master 066101602		API/UWI 05-123-50924													
Rig Name HP 517		Drilled For Oil & Gas		Service Via Land		Casing/ Liner									
						Depth, ft		Size, in		Weight, lb/ft		Grade	Thread		
Offshore Zone N/A		Well Class New		Well Type Development		110.0		16.0		36.94		A-52A	8RD		
						1946.7		9.6		36.0		J-55	8RD		
Drilling Fluid Type Spud Mud		Max. Density 8.90 lb/gal		Plastic Viscosity cP		Tubing/Drill Pipe									
						T/D		Depth, ft		Size, in		Weight, lb/ft		Grade	Thread
Service Line Cementing		Job Type SURFACE													
Max. Allowed Tub. Press psi		Max. Allowed Ann. Press psi		WH Connection		Perforations/Open Hole									
						Top, ft		Bottom, ft		shot/ft		No. of Shots		Total Interval	
						ft		ft						ft	
						ft		ft						Diameter	
						ft		ft						in	
						Treat Down Casing		Displacement 144.5 bbl		Packer Type		Packer Depth ft			
						Tubing Vol. bbl		Casing Vol. 148.0 bbl		Annular Vol. 17.7 bbl		Openhole Vol. 156.0 bbl			
Casing/Tubing Secured <input type="checkbox"/>		1 Hole Vol. Circulated prior to Cement <input checked="" type="checkbox"/>				Casing Tools				Squeeze Job					
Lift Pressure 800 psi						Shoe Type Float				Squeeze Type					
Pipe Rotated <input type="checkbox"/>		Pipe Reciprocated <input type="checkbox"/>				Shoe Depth 1915.0 ft				Tool Type					
No. Centralizers 17		Top Plugs		Bottom Plugs		Stage Tool Type				Tool Depth ft					
Cement Head Type						Stage Tool Depth ft				Tail Pipe Size in					
Job Scheduled For Jul/27/2021 23:24		Arrived on Location Jul/27/2021 17:00		Leave Location Jul/27/2021 01:00		Collar Type Float				Tail Pipe Depth ft					
						Collar Depth 1871.0 ft				Sqz. Total Vol. bbl					
Date	Time 24-hr clock	CPF1_PRESS PSI		CPF1_TTL_RATE B/M		CPF1_DOWNHOLE_DENSITY LB/G		Message							
07/27/2021	22:00:06	-2		0.0		8.39		Started Acquisition							
07/27/2021	22:24:00	-6		0.0		8.39		Fill lines with 5 bbls of fresh water							
07/27/2021	22:25:00	-5		0.0		8.39		low=500 psi high =3000 psi							
07/27/2021	22:26:00	1015		0.0		8.39		Pressure Test Lines							
07/27/2021	22:32:00	58		4.8		8.39		Start Pumping Spacer							
07/27/2021	22:35:00	54		4.7		8.39		pump 30 bbls of water spacer 10 with dye							
07/27/2021	22:38:00	95		4.8		13.69		End Spacer							
07/27/2021	22:39:00	114		6.3		13.55		Start Mixing Lead Slurry							
07/27/2021	22:57:00	174		6.6		13.56		pump 532 sks of lead @13.5# 161 bbls							
07/27/2021	23:00:00	168		6.7		13.58		yield =1.7 wr=9.09							
07/27/2021	23:01:00	158		6.6		13.34		End Lead Slurry							
07/27/2021	23:05:00	112		4.5		15.06		Start Mixing Tail Slurry							
07/27/2021	23:07:00	114		4.4		15.27		pump 105 sks of tail @15.2# 23 bbls							
07/27/2021	23:09:00	115		4.4		15.39		yield =1.25 wr=5.79							
07/27/2021	23:12:00	112		4.5		15.06		top of tail @1600 ft							
07/27/2021	23:13:00	-10		0.0		15.13		End Tail Slurry							
07/27/2021	23:29:00	226		6.2		8.39		Drop Top Plug							
07/27/2021	23:30:00	268		6.4		8.39		wash on top of the plug							
07/27/2021	23:31:00	298		6.4		8.39		Start Displacement							
07/27/2021	23:35:00	460		6.4		8.39		got back 31 bbls back to the surface							
07/27/2021	23:43:00	1252		0.0		8.39		Bump Top Plug							

Well RAMPART A33-7300			Field DJ		Job Start Jul/27/2021		Customer CHEVERON		Job Number 3232044	
Date	Time 24-hr clock	CPF1_PRESS PSI		CPF1_TTL_RATE B/M		CPF1_DOWNHOLE_DENSITY LB/G		Message		
07/27/2021	23:59:00	-5		0.0		8.39		check float it is holding		

Post Job Summary

Average Pump Rates, bbl/min					Volume of Fluid Injected, bbl			
Slurry 5.5	N2	Mud	Maximum Rate 6.7	Total Slurry 184.0	Mud 0.0	Spacer 30.0	N2	
Treating Pressure Summary, psi					Breakdown Fluid			
Maximum 3088	Final -8	Average 491	Bump Plug to 1200	Breakdown	Type FreshWater	Volume 144.5 bbl	Density 8.34 lb/gal	
Avg. N2 Percent %	Designed Slurry Volume 0.0 bbl	Displacement 144.5 bbl	Mix Water Temp 89 degF	Cement Circulated to Surface?		<input checked="" type="checkbox"/>	Volume 31.0 bbl	
				Washed Thru Perfs		<input type="checkbox"/>	To ft	
Customer or Authorized Representative JIM TURNER			Schlumberger Supervisor ALBERT SNYDER			Circulation Lost <input type="checkbox"/>	Job Completed <input checked="" type="checkbox"/>	
						-	-	

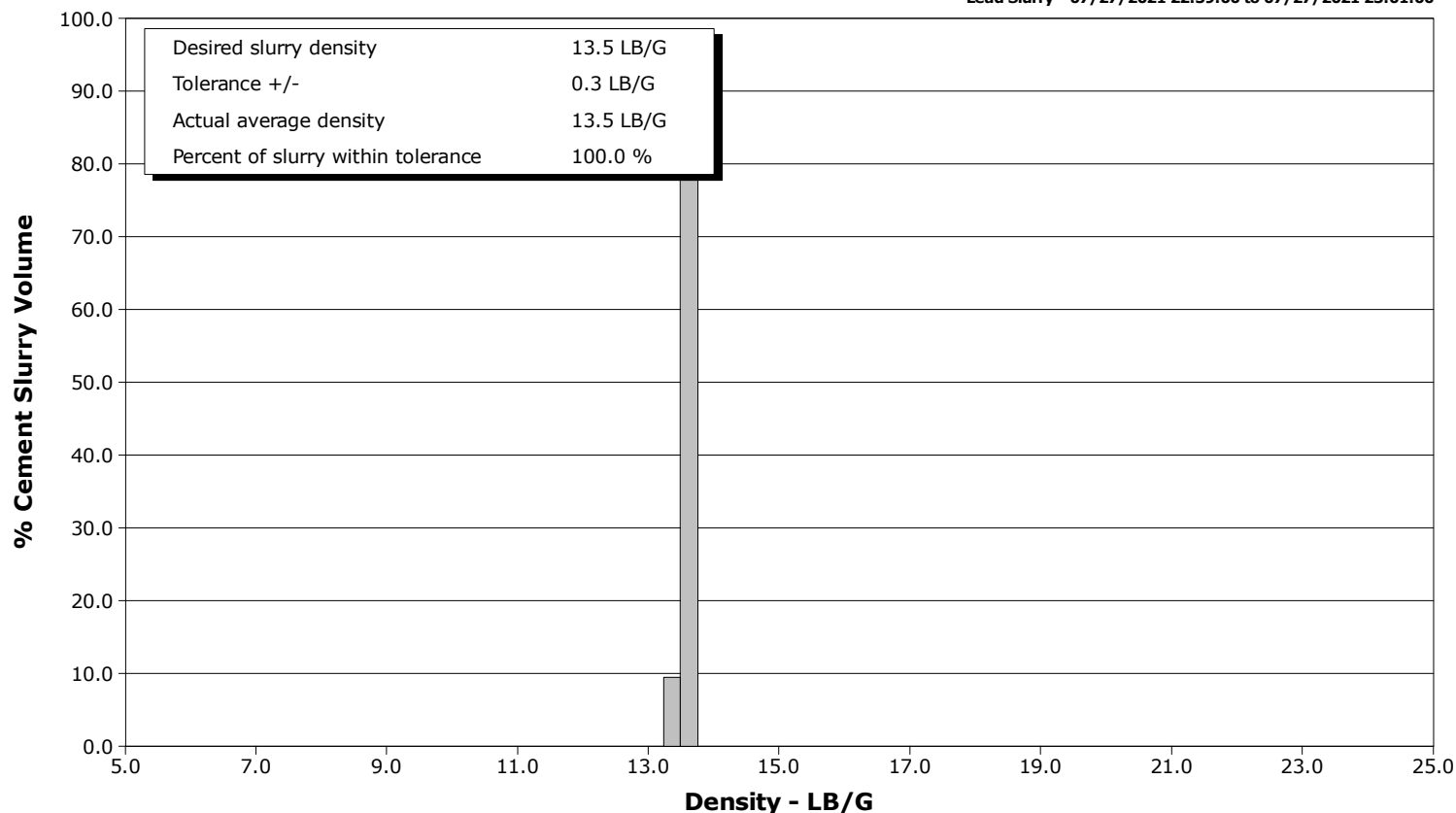
Well	RAMPART	Client	CHEVERON
Field	DJ	SIR No.	3232044
Engineer	ALBERT SNYDER	Job Type	SURFACE
Country	United States	Job Date	07-27-2021



Well RAMPART
Field DJ
Engineer ALBERT SNYDER
Country United States

Client CHEVERON
SIR No. 3232044
Job Type SURFACE
Job Date 07-27-2021

Lead Slurry - 07/27/2021 22:39:00 to 07/27/2021 23:01:00



Tail Slurry - 07/27/2021 23:05:00 to 07/27/2021 23:13:00

