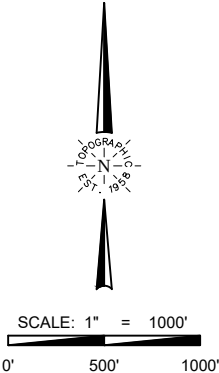




TOPOGRAPHIC
LOYALTY INNOVATION LEGACY
520 Stacy Court Ste B, Lafayette, CO 80026
303.666.0379 www.topographic.com

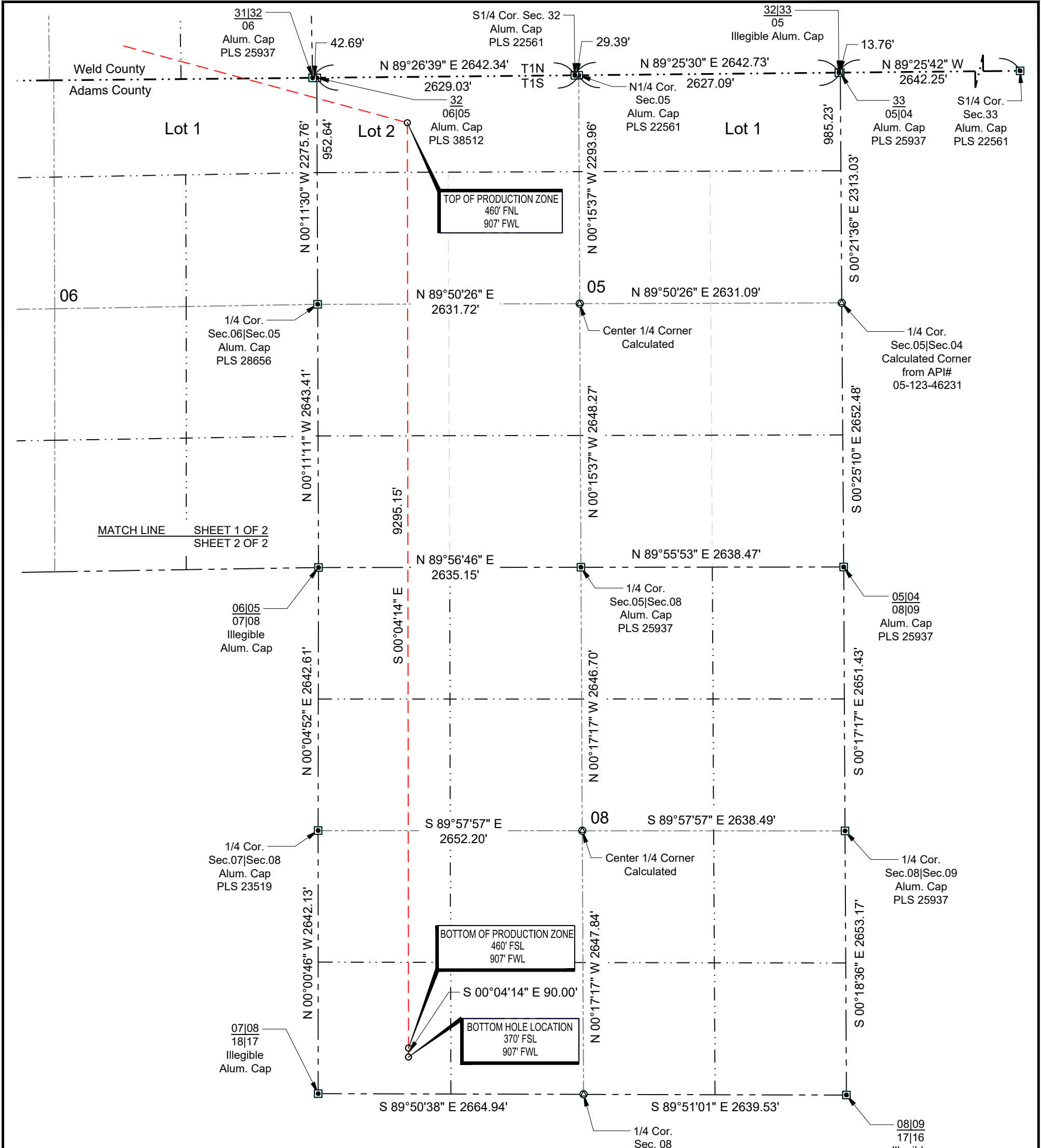
SURVEYOR'S STATEMENT
THE UNDERSIGNED HEREBY STATES THAT THE WELL LOCATION SHOWN HEREON WAS STAKED ON THE GROUND BASED ON EXISTING MONUMENTATION AND/OR PHYSICAL EVIDENCE FOUND IN THE FIELD AND IS CORRECT TO THE BEST OF MY KNOWLEDGE, INFORMATION AND BELIEF.

- NOTES**
- HORIZONTAL (NAD 83) AND VERTICAL (NAVD 88) DATUM IS BASED ON THE TRIMBLE VRS NETWORK. THE LINEAL UNITS OF MEASUREMENT ARE U.S. SURVEY FEET.
 - ALL DIRECTIONS, DISTANCES, AND DIMENSIONS SHOWN HEREON ARE BASED ON COORDINATES FROM THE "COLORADO COORDINATE SYSTEM OF 1983 NORTH ZONE" (TITLE 38, ARTICLE 52 C.R.S.).
 - ALL SECTION LINE DIMENSIONS SHOWN HEREON ARE BASED ON FIELD MEASUREMENTS OF EXISTING MONUMENTS AND/OR PHYSICAL EVIDENCE FOUND IN THE FIELD UNLESS OTHERWISE INDICATED.
 - PHYSICAL FEATURES SHOWN HEREON ARE FOR GRAPHICAL REPRESENTATION ONLY.
 - DISTANCES TO NEAREST SECTION LINES ARE MEASURED PERPENDICULARLY.
 - THIS IS NOT A LAND SURVEY NOR LAND SURVEY PLAT.
 - PDOP READING: 1.7 INSTRUMENT OPERATOR: T. ONLEY



VERDAD RESOURCES COUNTY LINE 3108 14H			
FIELD	04/20/2018	DRAFT	SW
REV 0	09/07/2021	CHECK	ZAK
SHEET : 1 OF 2		JOB: 143531	

WELL LOCATION MAP
S.H.L. SW/4 SE/4, SECTION 31 T1N R65W 6TH PM
TPZ LOT 2, SECTION 05 T1S R65W 6TH PM
BPZ SW/4 SW/4, SECTION 08 T1S R65W 6TH PM
BHL SW/4 SW/4, SECTION 08 T1S R65W 6TH PM
WELD COUNTY, COLORADO



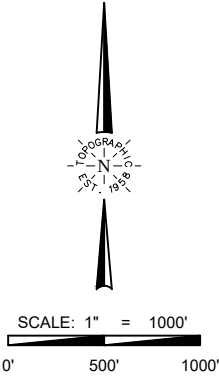
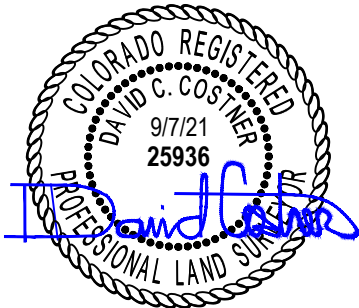
POINT	NAD 83		NAD 27	
SURFACE HOLE LOCATION	N:	1244378.18	N:	244381.07
	E:	3222983.37	E:	2223135.72
	LAT:	N40.0014565	LAT:	N40.0014730
	LONG:	W104.7040397	LONG:	W104.7035166
TOP OF PRODUCTION ZONE	N:	1243605.54	N:	243608.45
	E:	3225836.48	E:	2225988.77
	LAT:	N39.9992648	LAT:	N39.9992813
	LONG:	W104.6938809	LONG:	W104.6933583
BOTTOM OF PRODUCTION ZONE	N:	1234310.40	N:	234313.34
	E:	3225847.92	E:	2226000.34
	LAT:	N39.9737487	LAT:	N39.9737648
	LONG:	W104.6941416	LONG:	W104.6936187
BOTTOM HOLE LOCATION	N:	1234220.40	N:	234223.34
	E:	3225848.03	E:	2226000.45
	LAT:	N39.9735016	LAT:	N39.9735177
	LONG:	W104.6941441	LONG:	W104.6936212



TOPOGRAPHIC
LOYALTY INNOVATION LEGACY
520 Stacy Court Ste B, Lafayette, CO 80026
303.666.0379 www.topographic.com

SURVEYOR'S STATEMENT
THE UNDERSIGNED HEREBY STATES THAT THE WELL LOCATION SHOWN HEREON WAS STAKED ON THE GROUND BASED ON EXISTING MONUMENTATION AND/OR PHYSICAL EVIDENCE FOUND IN THE FIELD AND IS CORRECT TO THE BEST OF MY KNOWLEDGE, INFORMATION AND BELIEF.

- NOTES**
- HORIZONTAL (NAD 83) AND VERTICAL (NAVD 88) DATUM IS BASED ON THE TRIMBLE VRS NETWORK. THE LINEAL UNITS OF MEASUREMENT ARE U.S. SURVEY FEET.
 - ALL DIRECTIONS, DISTANCES, AND DIMENSIONS SHOWN HEREON ARE BASED ON COORDINATES FROM THE "COLORADO COORDINATE SYSTEM OF 1983 NORTH ZONE" (TITLE 38, ARTICLE 52 C.R.S.).
 - ALL SECTION LINE DIMENSIONS SHOWN HEREON ARE BASED ON FIELD MEASUREMENTS OF EXISTING MONUMENTS AND/OR PHYSICAL EVIDENCE FOUND IN THE FIELD UNLESS OTHERWISE INDICATED.
 - PHYSICAL FEATURES SHOWN HEREON ARE FOR GRAPHICAL REPRESENTATION ONLY.
 - DISTANCES TO NEAREST SECTION LINES ARE MEASURED PERPENDICULARLY.
 - THIS IS NOT A LAND SURVEY NOR LAND SURVEY PLAT.
 - PDOP READING: 1.7 INSTRUMENT OPERATOR: T. ONLEY



VERDAD RESOURCES COUNTY LINE 3108 14H			
FIELD	04/20/2018	DRAFT	SW
REV 0	09/07/2021	CHECK	ZAK
SHEET : 2 OF 2		JOB: 143531	

WELL LOCATION MAP
S.H.L. SW/4 SE/4, SECTION 31 T1N R65W 6TH PM
TPZ LOT 2, SECTION 05 T1S R65W 6TH PM
BPZ SW/4 SW/4, SECTION 08 T1S R65W 6TH PM
BHL SW/4 SW/4, SECTION 08 T1S R65W 6TH PM
WELD COUNTY, COLORADO