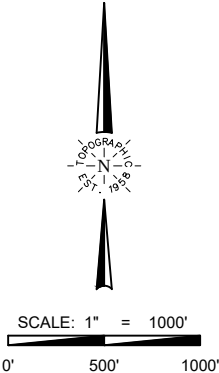




**TOPOGRAPHIC**  
LOYALTY INNOVATION LEGACY  
520 Stacy Court Ste B, Lafayette, CO 80026  
303.666.0379 www.topographic.com

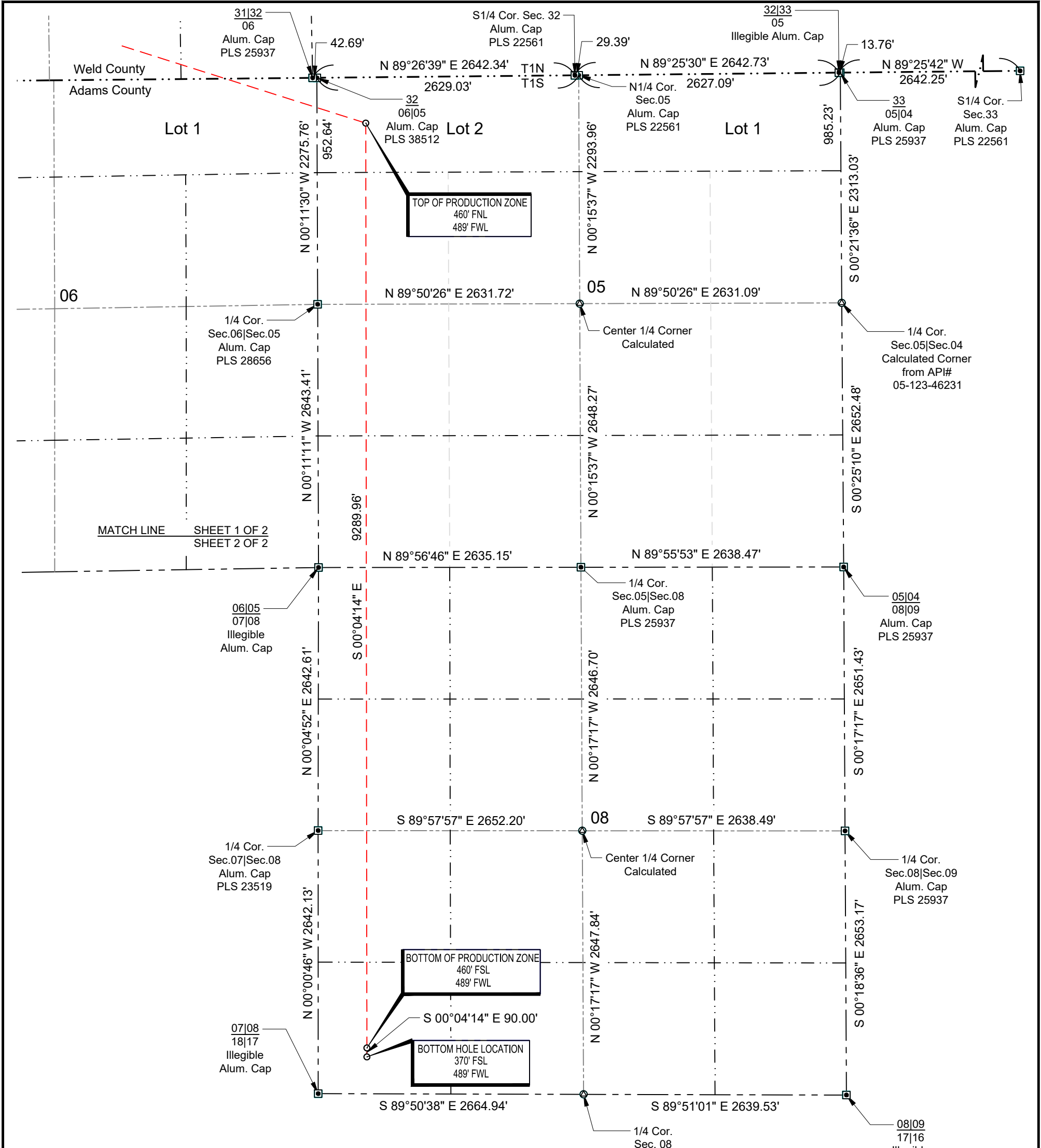
**SURVEYOR'S STATEMENT**  
THE UNDERSIGNED HEREBY STATES THAT THE WELL LOCATION SHOWN HEREON WAS STAKED ON THE GROUND BASED ON EXISTING MONUMENTATION AND/OR PHYSICAL EVIDENCE FOUND IN THE FIELD AND IS CORRECT TO THE BEST OF MY KNOWLEDGE, INFORMATION AND BELIEF.

- NOTES**
- HORIZONTAL (NAD 83) AND VERTICAL (NAVD 88) DATUM IS BASED ON THE TRIMBLE VRS NETWORK. THE LINEAL UNITS OF MEASUREMENT ARE U.S. SURVEY FEET.
  - ALL DIRECTIONS, DISTANCES, AND DIMENSIONS SHOWN HEREON ARE BASED ON COORDINATES FROM THE "COLORADO COORDINATE SYSTEM OF 1983 NORTH ZONE" (TITLE 38, ARTICLE 52 C.R.S.).
  - ALL SECTION LINE DIMENSIONS SHOWN HEREON ARE BASED ON FIELD MEASUREMENTS OF EXISTING MONUMENTS AND/OR PHYSICAL EVIDENCE FOUND IN THE FIELD UNLESS OTHERWISE INDICATED.
  - PHYSICAL FEATURES SHOWN HEREON ARE FOR GRAPHICAL REPRESENTATION ONLY.
  - DISTANCES TO NEAREST SECTION LINES ARE MEASURED PERPENDICULARLY.
  - THIS IS NOT A LAND SURVEY NOR LAND SURVEY PLAT.
  - PDOP READING: 1.7 INSTRUMENT OPERATOR: T. ONLEY



VERDAD RESOURCES COUNTY LINE 3108 13H			
FIELD	04/20/2018	DRAFT	SW
REV 0	09/07/2021	CHECK	ZAK
SHEET : 1 OF 2		JOB: 143531	

**WELL LOCATION MAP**  
S.H.L. SW/4 SE/4, SECTION 31 T1N R65W 6TH PM  
TPZ LOT 2, SECTION 05 T1S R65W 6TH PM  
BPZ SW/4 SW/4, SECTION 08 T1S R65W 6TH PM  
BHL SW/4 SW/4, SECTION 08 T1S R65W 6TH PM  
WELD COUNTY, COLORADO



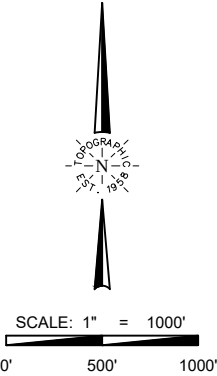
POINT	NAD 83		NAD 27	
SURFACE HOLE LOCATION	N:	1244378.03	N:	244380.92
	E:	3222968.37	E:	2223120.71
	LAT:	N40.0014565	LAT:	N40.0014730
	LONG:	W104.7040933	LONG:	W104.7035702
TOP OF PRODUCTION ZONE	N:	1243601.49	N:	243604.40
	E:	3225418.79	E:	2225571.09
	LAT:	N39.9992641	LAT:	N39.9992806
	LONG:	W104.6953719	LONG:	W104.6948492
BOTTOM OF PRODUCTION ZONE	N:	1234311.54	N:	234314.47
	E:	3225430.22	E:	2225582.64
	LAT:	N39.9737622	LAT:	N39.9737783
	LONG:	W104.6956319	LONG:	W104.6951089
BOTTOM HOLE LOCATION	N:	1234221.54	N:	234224.47
	E:	3225430.33	E:	2225582.76
	LAT:	N39.9735151	LAT:	N39.9735313
	LONG:	W104.6956344	LONG:	W104.6951115



**TOPOGRAPHIC**  
LOYALTY INNOVATION LEGACY  
520 Stacy Court Ste B, Lafayette, CO 80026  
303.666.0379 www.topographic.com

**SURVEYOR'S STATEMENT**  
THE UNDERSIGNED HEREBY STATES THAT THE WELL LOCATION SHOWN HEREON WAS STAKED ON THE GROUND BASED ON EXISTING MONUMENTATION AND/OR PHYSICAL EVIDENCE FOUND IN THE FIELD AND IS CORRECT TO THE BEST OF MY KNOWLEDGE, INFORMATION AND BELIEF.

- NOTES**
- HORIZONTAL (NAD 83) AND VERTICAL (NAVD 88) DATUM IS BASED ON THE TRIMBLE VRS NETWORK. THE LINEAL UNITS OF MEASUREMENT ARE U.S. SURVEY FEET.
  - ALL DIRECTIONS, DISTANCES, AND DIMENSIONS SHOWN HEREON ARE BASED ON COORDINATES FROM THE "COLORADO COORDINATE SYSTEM OF 1983 NORTH ZONE" (TITLE 38, ARTICLE 52 C.R.S.).
  - ALL SECTION LINE DIMENSIONS SHOWN HEREON ARE BASED ON FIELD MEASUREMENTS OF EXISTING MONUMENTS AND/OR PHYSICAL EVIDENCE FOUND IN THE FIELD UNLESS OTHERWISE INDICATED.
  - PHYSICAL FEATURES SHOWN HEREON ARE FOR GRAPHICAL REPRESENTATION ONLY.
  - DISTANCES TO NEAREST SECTION LINES ARE MEASURED PERPENDICULARLY.
  - THIS IS NOT A LAND SURVEY NOR LAND SURVEY PLAT.
  - PDOP READING: 1.7 INSTRUMENT OPERATOR: T. ONLEY



VERDAD RESOURCES COUNTY LINE 3108 13H			
FIELD	04/20/2018	DRAFT	SW
REV 0	09/07/2021	CHECK	ZAK
SHEET : 2 OF 2		JOB: 143531	

**WELL LOCATION MAP**  
S.H.L. SW/4 SE/4, SECTION 31 T1N R6W 6TH PM  
TPZ LOT 2, SECTION 05 T1S R6W 6TH PM  
BPZ SW/4 SW/4, SECTION 08 T1S R6W 6TH PM  
BHL SW/4 SW/4, SECTION 08 T1S R6W 6TH PM  
WELD COUNTY, COLORADO