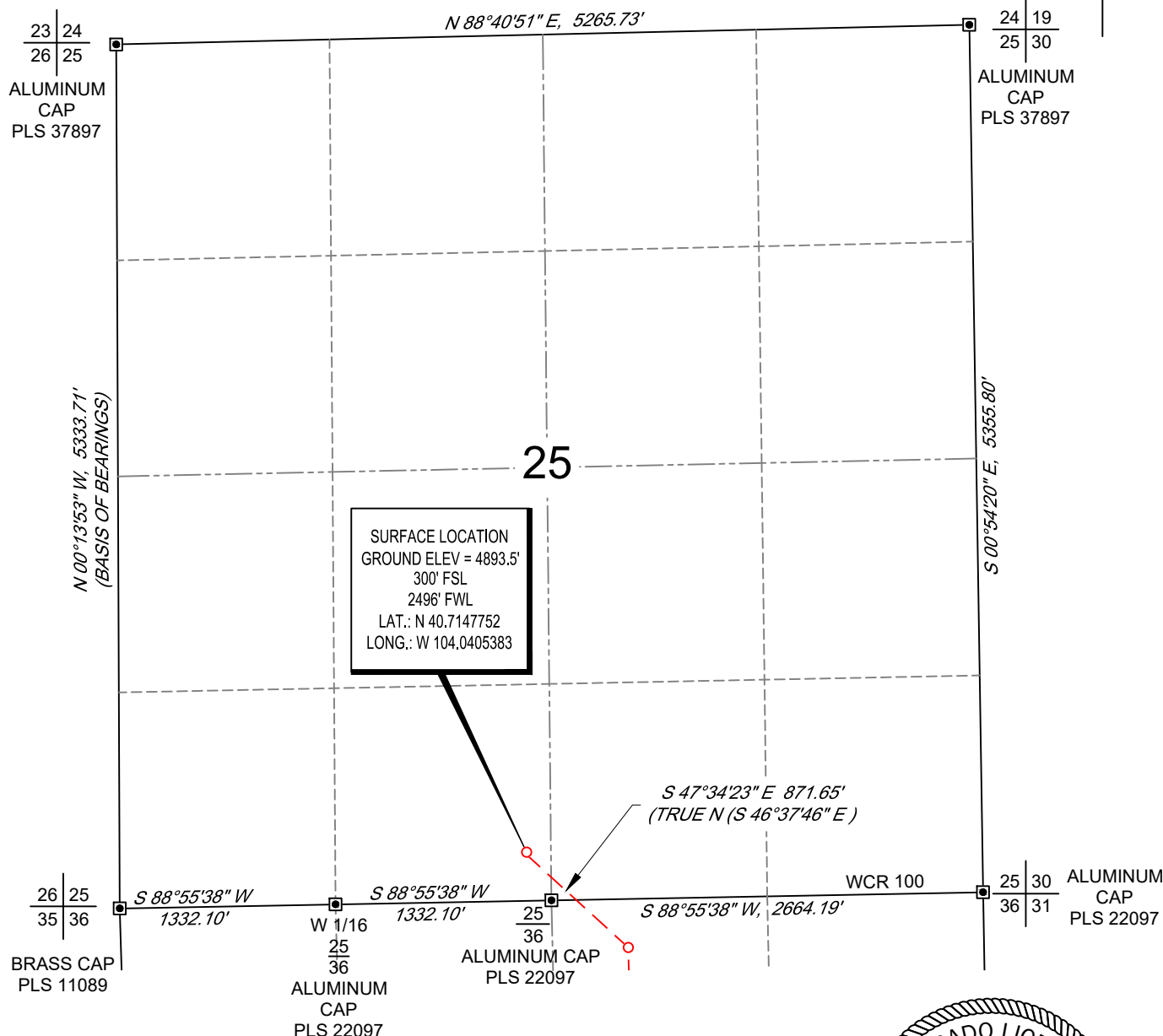


SCALE: 1" = 1000'  
0' 500' 1000'

# WELL LOCATION MAP

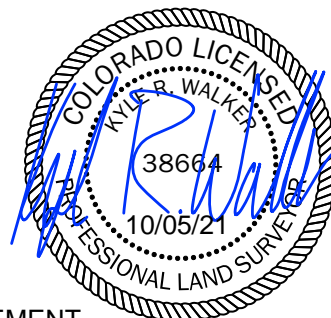
SHL SE/4 SW/4, SECTION 25, TOWNSHIP 9-N, RANGE 60-W  
LP NW/4 NE/4, SECTION 36, TOWNSHIP 9-N, RANGE 60-W  
DP SW/4 SE/4, SECTION 36, TOWNSHIP 9-N, RANGE 60-W  
BPZ, SW/4 NE/4, SECTION 01, TOWNSHIP 8-N, RANGE 60-W  
BHL SW/4 NE/4, SECTION 01, TOWNSHIP 8-N, RANGE 60-W  
WELD COUNTY, COLORADO



## NOTES

1. Horizontal (NAD 83) and vertical (NAVD 88) datum is based on the Trimble VRS Network.
2. All directions, distances, and dimensions shown hereon are based on coordinates from the "Colorado coordinate system of 1983 north zone" (article 52 of title 38, C.R.S.).
3. All section line dimensions shown hereon are based on field measurements of existing monuments and/or physical evidence found in the field unless otherwise indicated.
4. Physical features shown hereon are for graphical representation only.
5. See Form 2A if applicable, for visible improvements within 500' of wellhead.
6. Distances to nearest section lines are measured perpendicularly.
7. This is not a land survey nor land survey plat.

PDOP Reading: 1.5 Instrument Operator: **Joe DiGregorio** Date Surveyed: **02/14/2018**



## SURVEYOR'S STATEMENT

The undersigned hereby states that the well location shown hereon was staked on the ground based on existing monumentation and/or physical evidence found in the field and is correct to the best of my knowledge, information and belief.



VERDAD RESOURCES  
PEGGY 2501-10H

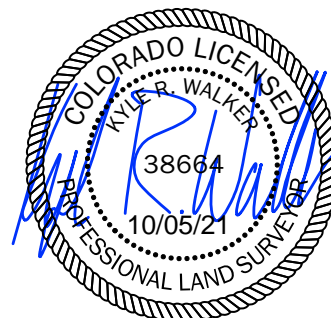
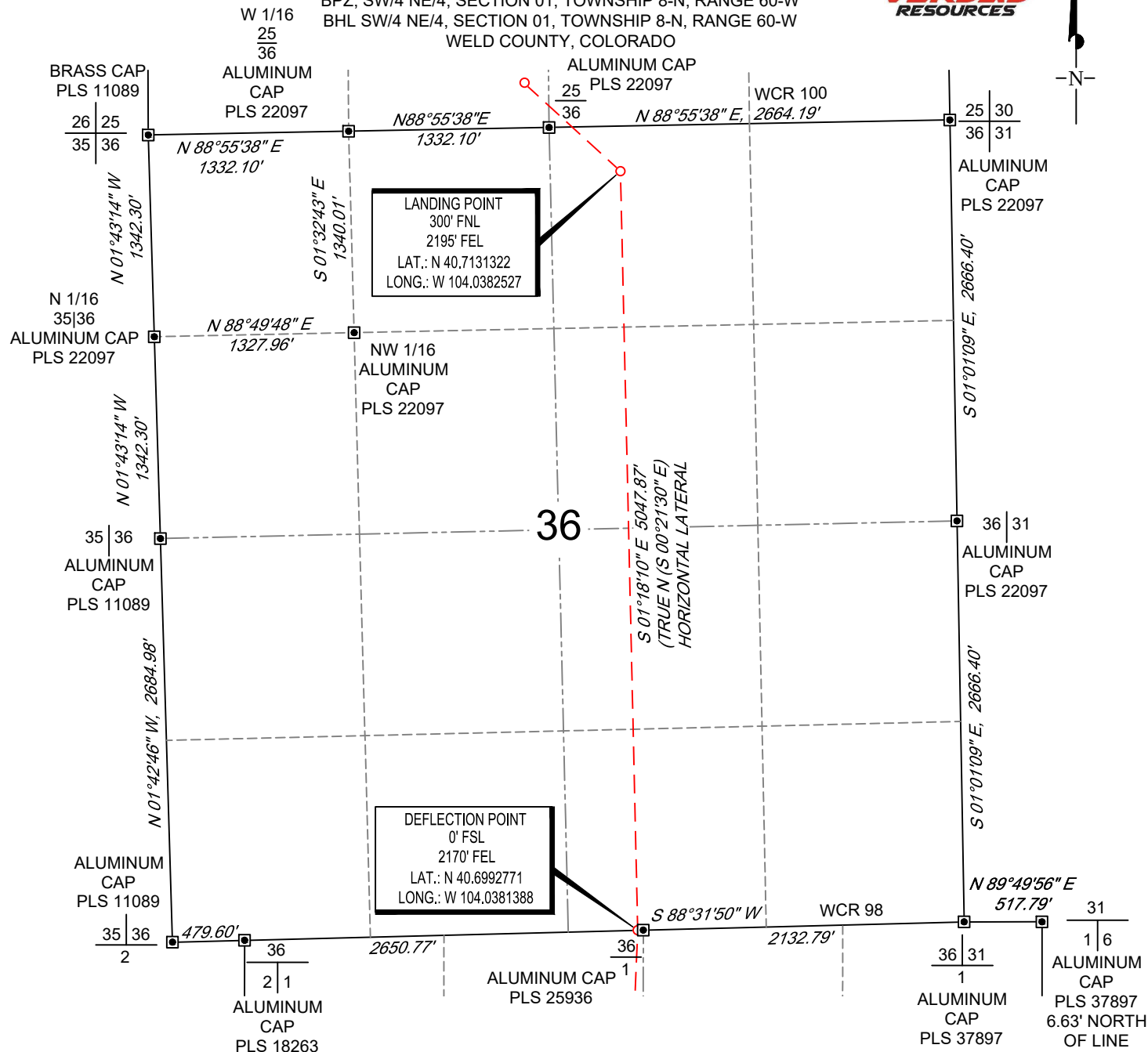
MAPP	10/5/2021	REVISION:	
SHEET :	1 OF 3	INT	DATE
FILE:LO_PEGGY_2501_10H_REV3	SW	10/05/2021	

SCALE: 1" = 1000'

0' 500' 1000'

# HORIZONTAL LATERAL LOCATION MAP

SHL SE/4 SW/4, SECTION 25, TOWNSHIP 9-N, RANGE 60-W  
 LP NW/4 NE/4, SECTION 36, TOWNSHIP 9-N, RANGE 60-W  
 DP SW/4 SE/4, SECTION 36, TOWNSHIP 9-N, RANGE 60-W  
 BPZ, SW/4 NE/4, SECTION 01, TOWNSHIP 8-N, RANGE 60-W  
 BHL SW/4 NE/4, SECTION 01, TOWNSHIP 8-N, RANGE 60-W  
 WELD COUNTY, COLORADO



VERDAD RESOURCES PEGGY 2501-10H	MAPP	10/5/2021	REVISION:	
	SHEET :	2 OF 3	INT	DATE
	FILE:LO_PEGGY_2501_10H_REV3	SW	10/05/2021	



G:\GEOSURV\WELDZNORTH\VERDAD\PEGGY 2501\FINAL PRODUCTS\SILO PEGGY 2501\_10H\_REV3.DWG 10/5/2021 3:51:12 PM swest