

# **VERDAD RESOURCES**

**WATTENBERG FIELD**

**9N-60W-25 PEGGY 2501 PAD**

**PEGGY 2501-08H**

**Plan B**

**Plan: Design #1**

## **Standard Planning Report**

**11 October, 2021**

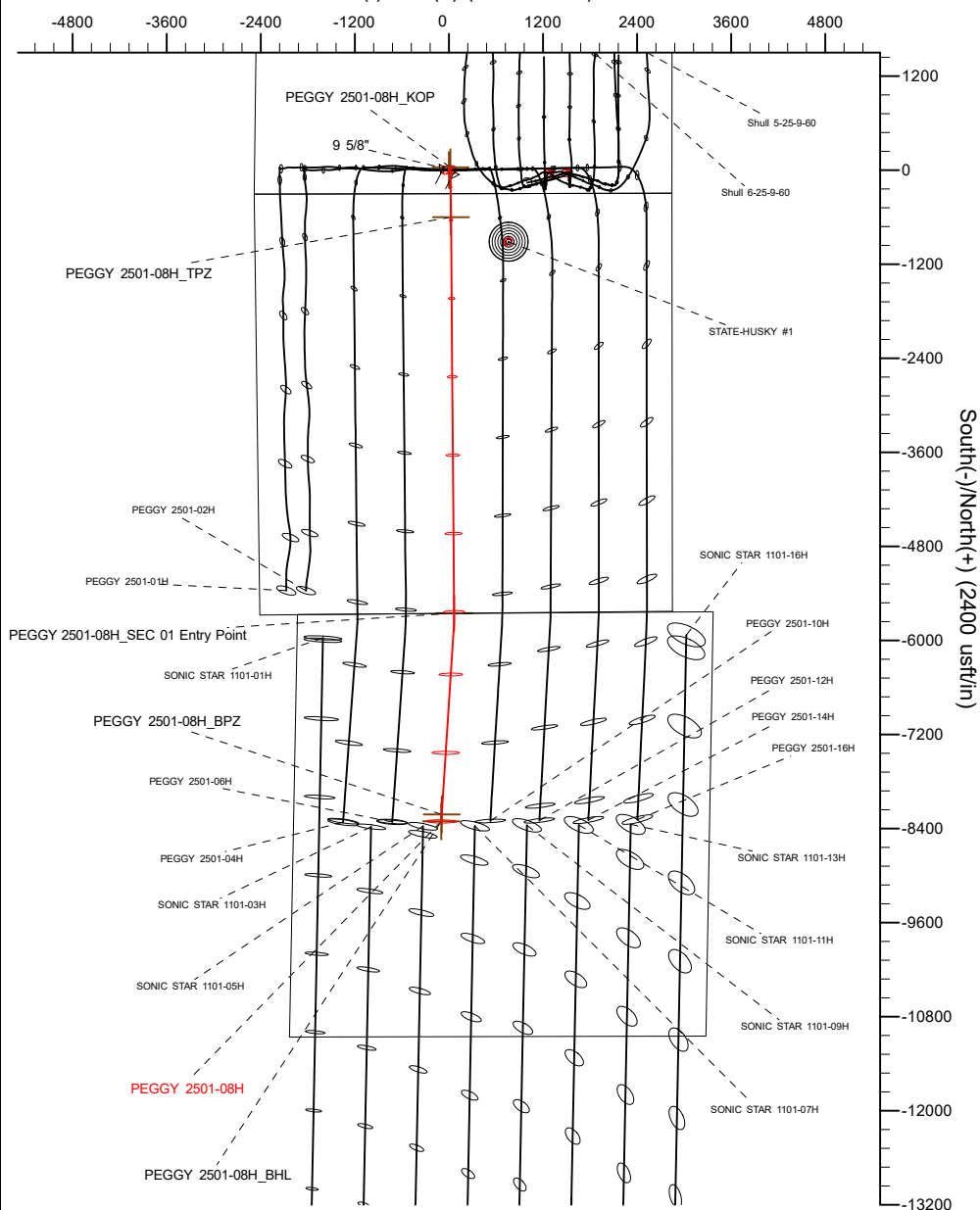
Project: WATTENBERG FIELD  
Site: 9N-60W-25 PEGGY 2501 PAD  
Well: PEGGY 2501-08H  
Wellbore: Plan B  
Design: Design #1

# VERDAD RESOURCES

## CASING DETAILS

TVD	MD	Name	Size
1560.00	1560.03	9 5/8"	9-5/8

West(-)/East(+) (2400 usft/in)



**SHL**  
300' FSL  
2480' FWL

**KOP**  
336' FSL  
2498' FWL

**TPZ**  
300' FNL  
2506' FWL

**SEC 01 Entry**  
0' FSL  
2478' FWL

**BPZ**  
2565' FNL  
1887' FWL

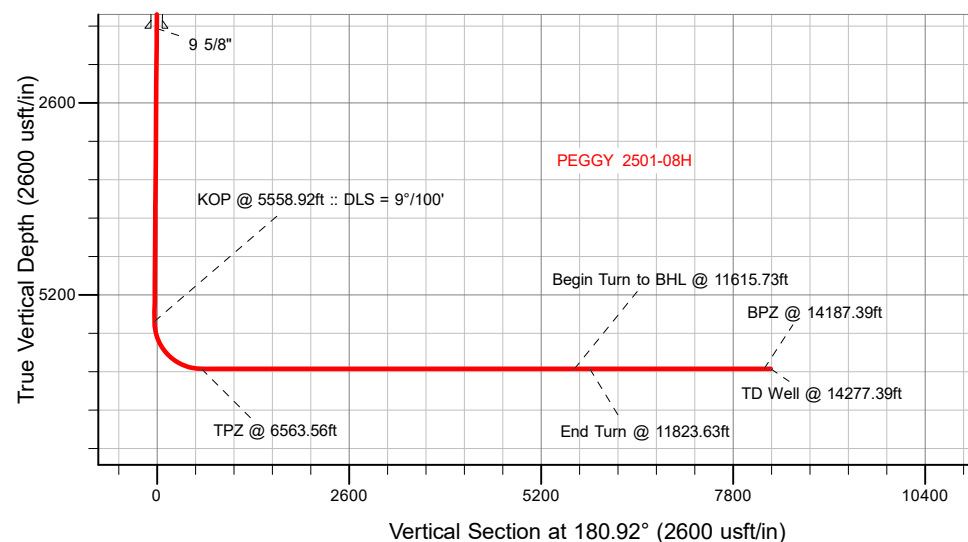
**BHL**  
2655' FNL  
1883' FWL


## SECTION DETAILS

Sec	MD	Inc	Azi	TVD	+N/-S	+E/-W	Dleg	TFace	VSec	Target
1	0.00	0.00	0.00	0.00	0.00	0.00	0.00	0.00	0.00	
2	540.50	0.00	0.00	540.50	0.00	0.00	0.00	0.00	0.00	
3	564.00	0.47	26.93	564.00	0.09	0.04	2.00	26.93	-0.09	
4	5558.92	0.47	26.93	5558.75	36.62	18.60	0.00	0.00	-36.91	
5	6563.56	90.00	179.54	6200.00	-599.95	26.09	9.00	152.61	599.45	
6	11615.73	90.00	179.54	6200.00	-5651.96	66.33	0.00	0.00	5650.17	PEGGY 2501-08H_SEC 01 Entry Point
7	11823.63	90.00	183.70	6200.00	-5859.73	60.44	2.00	90.00	5858.00	
8	14277.39	90.00	183.70	6200.00	-8308.37	-97.97	0.00	0.00	8308.87	PEGGY 2501-08H_BHL

## WELLBORE TARGET DETAILS (LAT/LONG)

Name	MD	TVD	+N/-S	+E/-W	Latitude	Longitude
PEGGY 2501-08H_SHL	0.00	0.00	0.00	0.00	40.714775	-104.040596
PEGGY 2501-08H_KOP	5558.92	5558.75	36.62	18.60	40.714876	-104.040529
PEGGY 2501-08H_TPZ	6563.56	6200.00	-599.95	26.09	40.713128	-104.040502
PEGGY 2501-08H_SEC 01 Entry Point	11615.73	6200.00	-5651.96	66.33	40.699262	-104.040357
PEGGY 2501-08H_BPZ	14187.39	6200.00	-8218.56	-92.43	40.692217	-104.040929
PEGGY 2501-08H_BHL	14277.39	6200.00	-8308.37	-97.97	40.691970	-104.040949



 <p>Azimuths to True North Magnetic North: 7.46°</p> <p>Magnetic Field Strength: 52156.9nT Dip Angle: 66.99° Date: 10/7/2021 Model: IGRF2020</p>	WELL DETAILS: PEGGY 2501-08H	
	GL = 4893'	
	RKB = 16' @ 4909.00usft (RIG)	
	Plan: Design #1 (PEGGY 2501-08H/Plan B)	
	Date: 10/11/2021	

## Planning Report

<b>Database:</b>	EDM 5000.16 Single User Db	<b>Local Co-ordinate Reference:</b>	Well PEGGY 2501-08H
<b>Company:</b>	VERDAD RESOURCES	<b>TVD Reference:</b>	RKB = 16' @ 4909.00usft (RIG)
<b>Project:</b>	WATTENBERG FIELD	<b>MD Reference:</b>	RKB = 16' @ 4909.00usft (RIG)
<b>Site:</b>	9N-60W-25 PEGGY 2501 PAD	<b>North Reference:</b>	True
<b>Well:</b>	PEGGY 2501-08H	<b>Survey Calculation Method:</b>	Minimum Curvature
<b>Wellbore:</b>	Plan B		
<b>Design:</b>	Design #1		

<b>Project</b>	WATTENBERG FIELD		
<b>Map System:</b>	US State Plane 1983	<b>System Datum:</b>	Mean Sea Level
<b>Geo Datum:</b>	North American Datum 1983		
<b>Map Zone:</b>	Colorado Northern Zone		

Site		9N-60W-25 PEGGY 2501 PAD			
Site Position:		Northing:	1,506,564.37 usft	Latitude:	40.714775
From:	Lat/Long	Easting:	3,404,485.26 usft	Longitude:	-104.040843
Position Uncertainty:	0.00 usft	Slot Radius:	13-3/16 "		

Well		PEGGY 2501-08H				
Well Position	+N-S	0.00 usft	Northing:	1,506,565.66 usft	Latitude:	40.714775
	+E-W	0.00 usft	Easting:	3,404,553.53 usft	Longitude:	-104.040596
Position Uncertainty		3.28 usft	Wellhead Elevation:	usft	Ground Level:	4,893.00 usft
Grid Convergence:		0.94 °				

<b>Wellbore</b>	Plan B				
<b>Magnetics</b>	<b>Model Name</b>	<b>Sample Date</b>	<b>Declination (°)</b>	<b>Dip Angle (°)</b>	<b>Field Strength (nT)</b>
	IGRF202013	10/7/2021	7.46	66.99	52,156.91551984

<b>Design</b>	Design #1				
<b>Audit Notes:</b>					
<b>Version:</b>		<b>Phase:</b>	PLAN	<b>Tie On Depth:</b>	0.00
<b>Vertical Section:</b>	<b>Depth From (TVD) (usft)</b>	<b>+N/-S (usft)</b>	<b>+E/-W (usft)</b>	<b>Direction (°)</b>	
	0.00	0.00	0.00	180.92	

<b>Plan Survey Tool Program</b>	<b>Date</b>	10/11/2021			
<b>Depth From (usft)</b>	<b>Depth To (usft)</b>	<b>Survey (Wellbore)</b>	<b>Tool Name</b>	<b>Remarks</b>	
1	0.00	1,560.00	Design #1 (Plan B)	ISCWSA MWD	
				Fixed:v2:standard declination	
2	1,560.00	14,277.39	Design #1 (Plan B)	ISCWSA MWD	
				Fixed:v2:standard declination	

## Planning Report

<b>Database:</b>	EDM 5000.16 Single User Db	<b>Local Co-ordinate Reference:</b>	Well PEGGY 2501-08H
<b>Company:</b>	VERDAD RESOURCES	<b>TVD Reference:</b>	RKB = 16' @ 4909.00usft (RIG)
<b>Project:</b>	WATTENBERG FIELD	<b>MD Reference:</b>	RKB = 16' @ 4909.00usft (RIG)
<b>Site:</b>	9N-60W-25 PEGGY 2501 PAD	<b>North Reference:</b>	True
<b>Well:</b>	PEGGY 2501-08H	<b>Survey Calculation Method:</b>	Minimum Curvature
<b>Wellbore:</b>	Plan B		
<b>Design:</b>	Design #1		

Plan Sections										
Measured Depth (usft)	Inclination (°)	Azimuth (°)	Vertical Depth (usft)	+N/-S (usft)	+E/-W (usft)	Dogleg Rate (°/100usft)	Build Rate (°/100usft)	Turn Rate (°/100usft)	TFO (°)	Target
0.00	0.00	0.00	0.00	0.00	0.00	0.00	0.00	0.00	0.00	
540.50	0.00	0.00	540.50	0.00	0.00	0.00	0.00	0.00	0.00	
564.00	0.47	26.93	564.00	0.09	0.04	2.00	2.00	0.00	26.93	
5,558.92	0.47	26.93	5,558.75	36.62	18.60	0.00	0.00	0.00	0.00	
6,563.56	90.00	179.54	6,200.00	-599.95	26.09	9.00	8.91	15.19	152.61	
11,615.73	90.00	179.54	6,200.00	-5,651.97	66.33	0.00	0.00	0.00	0.00	PEGGY 2501-08H_SI
11,823.63	90.00	183.70	6,200.00	-5,859.73	60.44	2.00	0.00	2.00	90.00	
14,277.39	90.00	183.70	6,200.00	-8,308.37	-97.97	0.00	0.00	0.00	0.00	PEGGY 2501-08H_BI

# Planning Report

<b>Database:</b>	EDM 5000.16 Single User Db	<b>Local Co-ordinate Reference:</b>	Well PEGGY 2501-08H
<b>Company:</b>	VERDAD RESOURCES	<b>TVD Reference:</b>	RKB = 16' @ 4909.00usft (RIG)
<b>Project:</b>	WATTENBERG FIELD	<b>MD Reference:</b>	RKB = 16' @ 4909.00usft (RIG)
<b>Site:</b>	9N-60W-25 PEGGY 2501 PAD	<b>North Reference:</b>	True
<b>Well:</b>	PEGGY 2501-08H	<b>Survey Calculation Method:</b>	Minimum Curvature
<b>Wellbore:</b>	Plan B		
<b>Design:</b>	Design #1		

Planned Survey									
Measured Depth (usft)	Inclination (°)	Azimuth (°)	Vertical Depth (usft)	+N/-S (usft)	+E/-W (usft)	Vertical Section (usft)	Dogleg Rate (°/100usft)	Build Rate (°/100usft)	Turn Rate (°/100usft)
0.00	0.00	0.00	0.00	0.00	0.00	0.00	0.00	0.00	0.00
100.00	0.00	0.00	100.00	0.00	0.00	0.00	0.00	0.00	0.00
200.00	0.00	0.00	200.00	0.00	0.00	0.00	0.00	0.00	0.00
300.00	0.00	0.00	300.00	0.00	0.00	0.00	0.00	0.00	0.00
400.00	0.00	0.00	400.00	0.00	0.00	0.00	0.00	0.00	0.00
500.00	0.00	0.00	500.00	0.00	0.00	0.00	0.00	0.00	0.00
540.50	0.00	0.00	540.50	0.00	0.00	0.00	0.00	0.00	0.00
Begin Nudge @ 540.50ft									
564.00	0.47	26.93	564.00	0.09	0.04	-0.09	2.00	2.00	0.00
Hold Tangent @ 564.00ft									
600.00	0.47	26.93	600.00	0.35	0.18	-0.35	0.00	0.00	0.00
700.00	0.47	26.93	700.00	1.08	0.55	-1.09	0.00	0.00	0.00
800.00	0.47	26.93	799.99	1.81	0.92	-1.83	0.00	0.00	0.00
900.00	0.47	26.93	899.99	2.54	1.29	-2.56	0.00	0.00	0.00
1,000.00	0.47	26.93	999.99	3.27	1.66	-3.30	0.00	0.00	0.00
1,100.00	0.47	26.93	1,099.98	4.01	2.03	-4.04	0.00	0.00	0.00
1,200.00	0.47	26.93	1,199.98	4.74	2.41	-4.78	0.00	0.00	0.00
1,300.00	0.47	26.93	1,299.98	5.47	2.78	-5.51	0.00	0.00	0.00
1,400.00	0.47	26.93	1,399.97	6.20	3.15	-6.25	0.00	0.00	0.00
1,500.00	0.47	26.93	1,499.97	6.93	3.52	-6.99	0.00	0.00	0.00
1,560.03	0.47	26.93	1,560.00	7.37	3.74	-7.43	0.00	0.00	0.00
9 5/8"									
1,600.00	0.47	26.93	1,599.96	7.66	3.89	-7.72	0.00	0.00	0.00
1,700.00	0.47	26.93	1,699.96	8.39	4.26	-8.46	0.00	0.00	0.00
1,800.00	0.47	26.93	1,799.96	9.13	4.64	-9.20	0.00	0.00	0.00
1,900.00	0.47	26.93	1,899.95	9.86	5.01	-9.94	0.00	0.00	0.00
2,000.00	0.47	26.93	1,999.95	10.59	5.38	-10.67	0.00	0.00	0.00
2,100.00	0.47	26.93	2,099.95	11.32	5.75	-11.41	0.00	0.00	0.00
2,200.00	0.47	26.93	2,199.94	12.05	6.12	-12.15	0.00	0.00	0.00
2,300.00	0.47	26.93	2,299.94	12.78	6.49	-12.88	0.00	0.00	0.00
2,400.00	0.47	26.93	2,399.94	13.51	6.86	-13.62	0.00	0.00	0.00
2,500.00	0.47	26.93	2,499.93	14.24	7.24	-14.36	0.00	0.00	0.00
2,600.00	0.47	26.93	2,599.93	14.98	7.61	-15.10	0.00	0.00	0.00
2,700.00	0.47	26.93	2,699.93	15.71	7.98	-15.83	0.00	0.00	0.00
2,800.00	0.47	26.93	2,799.92	16.44	8.35	-16.57	0.00	0.00	0.00
2,900.00	0.47	26.93	2,899.92	17.17	8.72	-17.31	0.00	0.00	0.00
3,000.00	0.47	26.93	2,999.92	17.90	9.09	-18.05	0.00	0.00	0.00
3,100.00	0.47	26.93	3,099.91	18.63	9.47	-18.78	0.00	0.00	0.00
3,200.00	0.47	26.93	3,199.91	19.36	9.84	-19.52	0.00	0.00	0.00
3,300.00	0.47	26.93	3,299.91	20.10	10.21	-20.26	0.00	0.00	0.00
3,400.00	0.47	26.93	3,399.90	20.83	10.58	-20.99	0.00	0.00	0.00
3,500.00	0.47	26.93	3,499.90	21.56	10.95	-21.73	0.00	0.00	0.00
3,600.00	0.47	26.93	3,599.90	22.29	11.32	-22.47	0.00	0.00	0.00
3,700.00	0.47	26.93	3,699.89	23.02	11.69	-23.21	0.00	0.00	0.00
3,800.00	0.47	26.93	3,799.89	23.75	12.07	-23.94	0.00	0.00	0.00
3,900.00	0.47	26.93	3,899.89	24.48	12.44	-24.68	0.00	0.00	0.00
4,000.00	0.47	26.93	3,999.88	25.21	12.81	-25.42	0.00	0.00	0.00
4,100.00	0.47	26.93	4,099.88	25.95	13.18	-26.15	0.00	0.00	0.00
4,200.00	0.47	26.93	4,199.88	26.68	13.55	-26.89	0.00	0.00	0.00
4,300.00	0.47	26.93	4,299.87	27.41	13.92	-27.63	0.00	0.00	0.00
4,400.00	0.47	26.93	4,399.87	28.14	14.29	-28.37	0.00	0.00	0.00
4,500.00	0.47	26.93	4,499.87	28.87	14.67	-29.10	0.00	0.00	0.00
4,600.00	0.47	26.93	4,599.86	29.60	15.04	-29.84	0.00	0.00	0.00

## Planning Report

<b>Database:</b>	EDM 5000.16 Single User Db	<b>Local Co-ordinate Reference:</b>	Well PEGGY 2501-08H
<b>Company:</b>	VERDAD RESOURCES	<b>TVD Reference:</b>	RKB = 16' @ 4909.00usft (RIG)
<b>Project:</b>	WATTENBERG FIELD	<b>MD Reference:</b>	RKB = 16' @ 4909.00usft (RIG)
<b>Site:</b>	9N-60W-25 PEGGY 2501 PAD	<b>North Reference:</b>	True
<b>Well:</b>	PEGGY 2501-08H	<b>Survey Calculation Method:</b>	Minimum Curvature
<b>Wellbore:</b>	Plan B		
<b>Design:</b>	Design #1		

Planned Survey									
Measured Depth (usft)	Inclination (°)	Azimuth (°)	Vertical Depth (usft)	+N/-S (usft)	+E/-W (usft)	Vertical Section (usft)	Dogleg Rate (°/100usft)	Build Rate (°/100usft)	Turn Rate (°/100usft)
4,700.00	0.47	26.93	4,699.86	30.33	15.41	-30.58	0.00	0.00	0.00
4,800.00	0.47	26.93	4,799.86	31.07	15.78	-31.32	0.00	0.00	0.00
4,900.00	0.47	26.93	4,899.85	31.80	16.15	-32.05	0.00	0.00	0.00
5,000.00	0.47	26.93	4,999.85	32.53	16.52	-32.79	0.00	0.00	0.00
5,100.00	0.47	26.93	5,099.85	33.26	16.90	-33.53	0.00	0.00	0.00
5,200.00	0.47	26.93	5,199.84	33.99	17.27	-34.26	0.00	0.00	0.00
5,300.00	0.47	26.93	5,299.84	34.72	17.64	-35.00	0.00	0.00	0.00
5,400.00	0.47	26.93	5,399.84	35.45	18.01	-35.74	0.00	0.00	0.00
5,500.00	0.47	26.93	5,499.83	36.19	18.38	-36.48	0.00	0.00	0.00
5,558.92	0.47	26.93	5,558.75	36.62	18.60	-36.91	0.00	0.00	0.00
KOP @ 5558.92ft :: DLS = 9°/100'									
5,600.00	3.29	175.78	5,599.81	35.59	18.76	-35.89	9.00	6.86	362.33
5,650.00	7.78	177.96	5,649.57	30.78	18.99	-31.08	9.00	8.99	4.37
5,700.00	12.28	178.55	5,698.79	22.07	19.24	-22.38	9.00	9.00	1.18
5,750.00	16.78	178.83	5,747.18	9.53	19.53	-9.84	9.00	9.00	0.55
5,800.00	21.28	178.99	5,794.43	-6.76	19.84	6.44	9.00	9.00	0.32
5,850.00	25.78	179.10	5,840.26	-26.72	20.17	26.39	9.00	9.00	0.21
5,900.00	30.28	179.17	5,884.39	-50.21	20.52	49.87	9.00	9.00	0.15
5,950.00	34.78	179.23	5,926.53	-77.08	20.89	76.74	9.00	9.00	0.12
6,000.00	39.28	179.28	5,966.44	-107.19	21.28	106.83	9.00	9.00	0.09
6,050.00	43.78	179.32	6,003.86	-140.33	21.69	139.96	9.00	9.00	0.08
6,100.00	48.28	179.35	6,038.56	-176.30	22.11	175.92	9.00	9.00	0.07
6,150.00	52.78	179.38	6,070.34	-214.89	22.53	214.50	9.00	9.00	0.06
6,200.00	57.28	179.40	6,098.99	-255.85	22.97	255.44	9.00	9.00	0.05
6,250.00	61.78	179.43	6,124.33	-298.93	23.41	298.51	9.00	9.00	0.05
6,300.00	66.28	179.45	6,146.22	-343.86	23.85	343.44	9.00	9.00	0.04
6,350.00	70.78	179.47	6,164.52	-390.38	24.29	389.94	9.00	9.00	0.04
6,400.00	75.28	179.49	6,179.11	-438.19	24.72	437.74	9.00	9.00	0.04
6,450.00	79.78	179.50	6,189.90	-487.00	25.15	486.53	9.00	9.00	0.04
6,500.00	84.28	179.52	6,196.83	-536.50	25.57	536.02	9.00	9.00	0.03
6,550.00	88.78	179.54	6,199.86	-586.39	25.98	585.90	9.00	9.00	0.03
6,563.56	90.00	179.54	6,200.00	-599.95	26.09	599.45	9.00	9.00	0.03
TPZ @ 6563.56ft									
6,600.00	90.00	179.54	6,200.00	-636.39	26.38	635.88	0.00	0.00	0.00
6,700.00	90.00	179.54	6,200.00	-736.39	27.18	735.85	0.00	0.00	0.00
6,800.00	90.00	179.54	6,200.00	-836.38	27.97	835.83	0.00	0.00	0.00
6,900.00	90.00	179.54	6,200.00	-936.38	28.77	935.80	0.00	0.00	0.00
7,000.00	90.00	179.54	6,200.00	-1,036.38	29.57	1,035.77	0.00	0.00	0.00
7,100.00	90.00	179.54	6,200.00	-1,136.37	30.36	1,135.74	0.00	0.00	0.00
7,200.00	90.00	179.54	6,200.00	-1,236.37	31.16	1,235.71	0.00	0.00	0.00
7,300.00	90.00	179.54	6,200.00	-1,336.37	31.96	1,335.68	0.00	0.00	0.00
7,400.00	90.00	179.54	6,200.00	-1,436.36	32.75	1,435.65	0.00	0.00	0.00
7,500.00	90.00	179.54	6,200.00	-1,536.36	33.55	1,535.62	0.00	0.00	0.00
7,600.00	90.00	179.54	6,200.00	-1,636.36	34.34	1,635.60	0.00	0.00	0.00
7,700.00	90.00	179.54	6,200.00	-1,736.35	35.14	1,735.57	0.00	0.00	0.00
7,800.00	90.00	179.54	6,200.00	-1,836.35	35.94	1,835.54	0.00	0.00	0.00
7,900.00	90.00	179.54	6,200.00	-1,936.35	36.73	1,935.51	0.00	0.00	0.00
8,000.00	90.00	179.54	6,200.00	-2,036.35	37.53	2,035.48	0.00	0.00	0.00
8,100.00	90.00	179.54	6,200.00	-2,136.34	38.33	2,135.45	0.00	0.00	0.00
8,200.00	90.00	179.54	6,200.00	-2,236.34	39.12	2,235.42	0.00	0.00	0.00
8,300.00	90.00	179.54	6,200.00	-2,336.34	39.92	2,335.39	0.00	0.00	0.00
8,400.00	90.00	179.54	6,200.00	-2,436.33	40.72	2,435.36	0.00	0.00	0.00
8,500.00	90.00	179.54	6,200.00	-2,536.33	41.51	2,535.34	0.00	0.00	0.00
8,600.00	90.00	179.54	6,200.00	-2,636.33	42.31	2,635.31	0.00	0.00	0.00

## Planning Report

<b>Database:</b>	EDM 5000.16 Single User Db	<b>Local Co-ordinate Reference:</b>	Well PEGGY 2501-08H
<b>Company:</b>	VERDAD RESOURCES	<b>TVD Reference:</b>	RKB = 16' @ 4909.00usft (RIG)
<b>Project:</b>	WATTENBERG FIELD	<b>MD Reference:</b>	RKB = 16' @ 4909.00usft (RIG)
<b>Site:</b>	9N-60W-25 PEGGY 2501 PAD	<b>North Reference:</b>	True
<b>Well:</b>	PEGGY 2501-08H	<b>Survey Calculation Method:</b>	Minimum Curvature
<b>Wellbore:</b>	Plan B		
<b>Design:</b>	Design #1		

Planned Survey									
Measured Depth (usft)	Inclination (°)	Azimuth (°)	Vertical Depth (usft)	+N/-S (usft)	+E/-W (usft)	Vertical Section (usft)	Dogleg Rate (°/100usft)	Build Rate (°/100usft)	Turn Rate (°/100usft)
8,700.00	90.00	179.54	6,200.00	-2,736.32	43.10	2,735.28	0.00	0.00	0.00
8,800.00	90.00	179.54	6,200.00	-2,836.32	43.90	2,835.25	0.00	0.00	0.00
8,900.00	90.00	179.54	6,200.00	-2,936.32	44.70	2,935.22	0.00	0.00	0.00
9,000.00	90.00	179.54	6,200.00	-3,036.31	45.49	3,035.19	0.00	0.00	0.00
9,100.00	90.00	179.54	6,200.00	-3,136.31	46.29	3,135.16	0.00	0.00	0.00
9,200.00	90.00	179.54	6,200.00	-3,236.31	47.09	3,235.13	0.00	0.00	0.00
9,300.00	90.00	179.54	6,200.00	-3,336.30	47.88	3,335.10	0.00	0.00	0.00
9,400.00	90.00	179.54	6,200.00	-3,436.30	48.68	3,435.08	0.00	0.00	0.00
9,500.00	90.00	179.54	6,200.00	-3,536.30	49.48	3,535.05	0.00	0.00	0.00
9,600.00	90.00	179.54	6,200.00	-3,636.29	50.27	3,635.02	0.00	0.00	0.00
9,700.00	90.00	179.54	6,200.00	-3,736.29	51.07	3,734.99	0.00	0.00	0.00
9,800.00	90.00	179.54	6,200.00	-3,836.29	51.87	3,834.96	0.00	0.00	0.00
9,900.00	90.00	179.54	6,200.00	-3,936.28	52.66	3,934.93	0.00	0.00	0.00
10,000.00	90.00	179.54	6,200.00	-4,036.28	53.46	4,034.90	0.00	0.00	0.00
10,100.00	90.00	179.54	6,200.00	-4,136.28	54.25	4,134.87	0.00	0.00	0.00
10,200.00	90.00	179.54	6,200.00	-4,236.28	55.05	4,234.85	0.00	0.00	0.00
10,300.00	90.00	179.54	6,200.00	-4,336.27	55.85	4,334.82	0.00	0.00	0.00
10,400.00	90.00	179.54	6,200.00	-4,436.27	56.64	4,434.79	0.00	0.00	0.00
10,500.00	90.00	179.54	6,200.00	-4,536.27	57.44	4,534.76	0.00	0.00	0.00
10,600.00	90.00	179.54	6,200.00	-4,636.26	58.24	4,634.73	0.00	0.00	0.00
10,700.00	90.00	179.54	6,200.00	-4,736.26	59.03	4,734.70	0.00	0.00	0.00
10,800.00	90.00	179.54	6,200.00	-4,836.26	59.83	4,834.67	0.00	0.00	0.00
10,900.00	90.00	179.54	6,200.00	-4,936.25	60.63	4,934.64	0.00	0.00	0.00
11,000.00	90.00	179.54	6,200.00	-5,036.25	61.42	5,034.61	0.00	0.00	0.00
11,100.00	90.00	179.54	6,200.00	-5,136.25	62.22	5,134.59	0.00	0.00	0.00
11,200.00	90.00	179.54	6,200.00	-5,236.24	63.01	5,234.56	0.00	0.00	0.00
11,300.00	90.00	179.54	6,200.00	-5,336.24	63.81	5,334.53	0.00	0.00	0.00
11,400.00	90.00	179.54	6,200.00	-5,436.24	64.61	5,434.50	0.00	0.00	0.00
11,500.00	90.00	179.54	6,200.00	-5,536.23	65.40	5,534.47	0.00	0.00	0.00
11,600.00	90.00	179.54	6,200.00	-5,636.23	66.20	5,634.44	0.00	0.00	0.00
11,615.73	90.00	179.54	6,200.00	-5,651.97	66.33	5,650.17	0.00	0.00	0.00
Begin Turn to BHL @ 11615.73ft									
11,700.00	90.00	181.23	6,200.00	-5,736.23	65.76	5,734.43	2.00	0.00	2.00
11,800.00	90.00	183.23	6,200.00	-5,836.14	61.87	5,834.40	2.00	0.00	2.00
11,823.63	90.00	183.70	6,200.00	-5,859.73	60.44	5,858.00	2.00	0.00	2.00
End Turn @ 11823.63ft									
11,900.00	90.00	183.70	6,200.00	-5,935.94	55.51	5,934.29	0.00	0.00	0.00
12,000.00	90.00	183.70	6,200.00	-6,035.73	49.05	6,034.17	0.00	0.00	0.00
12,100.00	90.00	183.70	6,200.00	-6,135.52	42.60	6,134.05	0.00	0.00	0.00
12,200.00	90.00	183.70	6,200.00	-6,235.32	36.14	6,233.93	0.00	0.00	0.00
12,300.00	90.00	183.70	6,200.00	-6,335.11	29.69	6,333.81	0.00	0.00	0.00
12,400.00	90.00	183.70	6,200.00	-6,434.90	23.23	6,433.70	0.00	0.00	0.00
12,500.00	90.00	183.70	6,200.00	-6,534.69	16.77	6,533.58	0.00	0.00	0.00
12,600.00	90.00	183.70	6,200.00	-6,634.48	10.32	6,633.46	0.00	0.00	0.00
12,700.00	90.00	183.70	6,200.00	-6,734.27	3.86	6,733.34	0.00	0.00	0.00
12,800.00	90.00	183.70	6,200.00	-6,834.06	-2.59	6,833.23	0.00	0.00	0.00
12,900.00	90.00	183.70	6,200.00	-6,933.86	-9.05	6,933.11	0.00	0.00	0.00
13,000.00	90.00	183.70	6,200.00	-7,033.65	-15.51	7,032.99	0.00	0.00	0.00
13,100.00	90.00	183.70	6,200.00	-7,133.44	-21.96	7,132.87	0.00	0.00	0.00
13,200.00	90.00	183.70	6,200.00	-7,233.23	-28.42	7,232.75	0.00	0.00	0.00
13,300.00	90.00	183.70	6,200.00	-7,333.02	-34.87	7,332.64	0.00	0.00	0.00
13,400.00	90.00	183.70	6,200.00	-7,432.81	-41.33	7,432.52	0.00	0.00	0.00
13,500.00	90.00	183.70	6,200.00	-7,532.60	-47.79	7,532.40	0.00	0.00	0.00
13,600.00	90.00	183.70	6,200.00	-7,632.40	-54.24	7,632.28	0.00	0.00	0.00

## Planning Report

<b>Database:</b>	EDM 5000.16 Single User Db	<b>Local Co-ordinate Reference:</b>	Well PEGGY 2501-08H
<b>Company:</b>	VERDAD RESOURCES	<b>TVD Reference:</b>	RKB = 16' @ 4909.00usft (RIG)
<b>Project:</b>	WATTENBERG FIELD	<b>MD Reference:</b>	RKB = 16' @ 4909.00usft (RIG)
<b>Site:</b>	9N-60W-25 PEGGY 2501 PAD	<b>North Reference:</b>	True
<b>Well:</b>	PEGGY 2501-08H	<b>Survey Calculation Method:</b>	Minimum Curvature
<b>Wellbore:</b>	Plan B		
<b>Design:</b>	Design #1		

Planned Survey										
Measured Depth (usft)	Inclination (°)	Azimuth (°)	Vertical Depth (usft)	+N/-S (usft)	+E/-W (usft)	Vertical Section (usft)	Dogleg Rate (°/100usft)	Build Rate (°/100usft)	Turn Rate (°/100usft)	
13,700.00	90.00	183.70	6,200.00	-7,732.19	-60.70	7,732.16	0.00	0.00	0.00	
13,800.00	90.00	183.70	6,200.00	-7,831.98	-67.15	7,832.05	0.00	0.00	0.00	
13,900.00	90.00	183.70	6,200.00	-7,931.77	-73.61	7,931.93	0.00	0.00	0.00	
14,000.00	90.00	183.70	6,200.00	-8,031.56	-80.07	8,031.81	0.00	0.00	0.00	
14,100.00	90.00	183.70	6,200.00	-8,131.35	-86.52	8,131.69	0.00	0.00	0.00	
14,187.39	90.00	183.70	6,200.00	-8,218.56	-92.16	8,218.98	0.00	0.00	0.00	
BPZ @ 14187.39ft										
14,200.00	90.00	183.70	6,200.00	-8,231.14	-92.98	8,231.58	0.00	0.00	0.00	
14,277.39	90.00	183.70	6,200.00	-8,308.37	-97.97	8,308.87	0.00	0.00	0.00	
TD Well @ 14277.39ft										

Casing Points					
Measured Depth (usft)	Vertical Depth (usft)	Name	Casing Diameter (")	Hole Diameter (")	
1,560.03	1,560.00	9 5/8"	9-5/8	13-1/2	

Plan Annotations					
Measured Depth (usft)	Vertical Depth (usft)	Local Coordinates			
		+N/-S (usft)	+E/-W (usft)	Comment	
540.50	540.50	0.00	0.00	Begin Nudge @ 540.50ft	
564.00	564.00	0.09	0.04	Hold Tangent @ 564.00ft	
5,558.92	5,558.75	36.62	18.60	KOP @ 5558.92ft :: DLS = 9°/100'	
6,563.56	6,200.00	-599.95	26.09	TPZ @ 6563.56ft	
11,615.73	6,200.00	-5,651.97	66.33	Begin Turn to BHL @ 11615.73ft	
11,823.63	6,200.00	-5,859.73	60.44	End Turn @ 11823.63ft	
14,187.39	6,200.00	-8,218.56	-92.16	BPZ @ 14187.39ft	
14,277.39	6,200.00	-8,308.37	-97.97	TD Well @ 14277.39ft	