



# Verdad Resources LLC



Borehole:	Well:	Field:	Structure:
Original Hole	KBL 1930 09H	CO, Weld County (NAD 83 NZ) - 2019	Verdad Resources 19-02N-63W (KBL 1930 Pad)

Gravity & Magnetic Parameters				Surface Location				Miscellaneous			
Model:	HDMG 2021	Dip:	66.472°	Date:	30-Jul-2021	Lat:	N 40 7 17.79	Northing:	1288791.78ftUS	Grid Conv:	0.6602°
MagDec:	8.009°	FS:	51854.529nT	Gravity FS:	999.019mgn (9.80665 Based)	Lon:	W 104 28 41.44	Easting:	3285750.59ftUS	Scale Fact:	0.99995937
								Plan: KBL 1930 09H MWD 0' to 14638' Definitive			

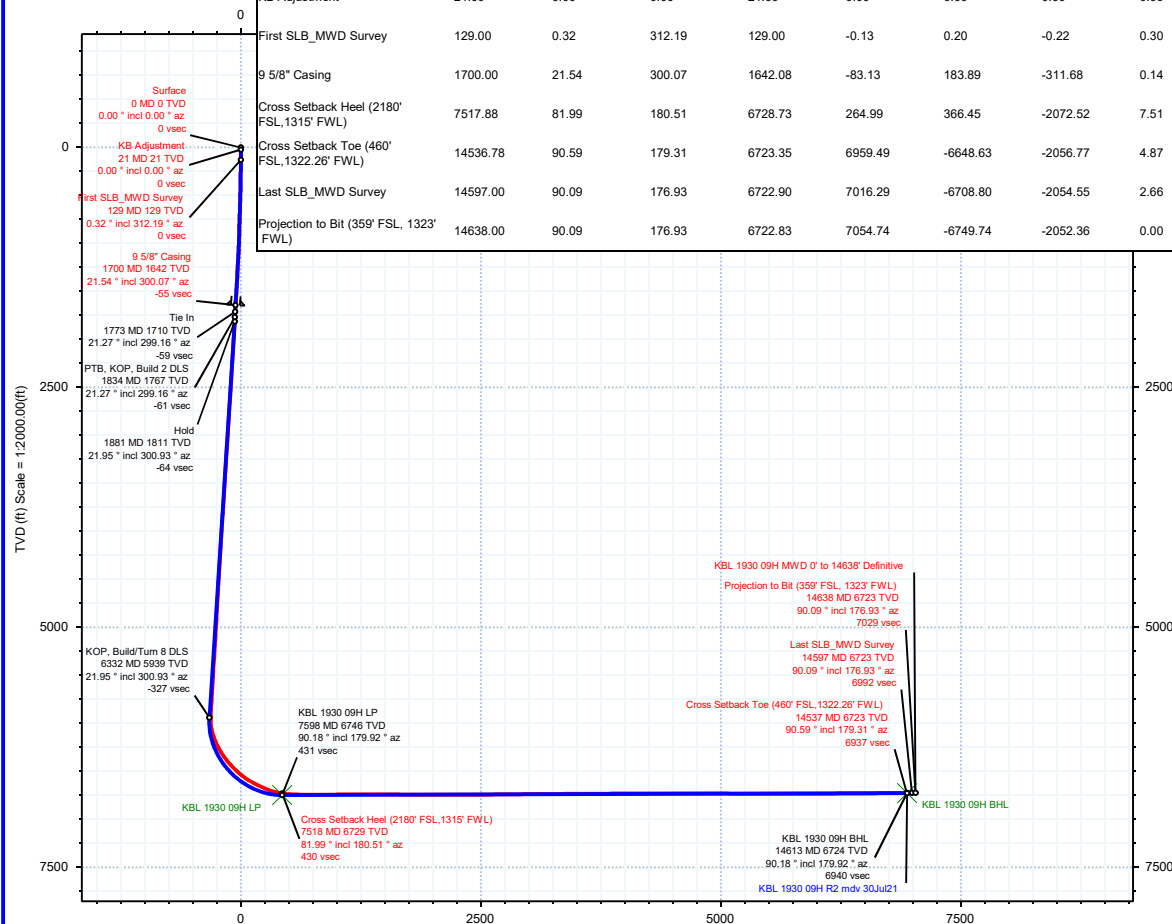
Surface Location									
Northing:		Easting:		Latitude:		Longitude:		VSec Azimuth:	
1288791.78431693		3285750.59467773		N 40 7 17.79		W 104 28 41.44		197.26	
Target Description			Grid Coord				Local Coord		
Target Name	Latitude	Longitude	Northing	Easting	TVD	VSec	N(+)/S(-)	E(+)/W(-)	
KBL 1930 Pad Sec 19-30 460' SB	N 40 7 17.79	W 104 28 41.82	1288791.80	3285720.67	4881.00	8.53	0.36	-29.92	
KBL 1930 Pad Sec 19-30	N 40 7 17.79	W 104 28 41.82	1288791.80	3285720.67	4881.00	8.53	0.36	-29.92	
KBL 1930 Pad Sec 19 - Mid line	N 40 7 17.79	W 104 28 41.82	1288791.80	3285720.67	4881.00	8.53	0.36	-29.92	
KBL 1930 09H BHL	N 40 6 12.08	W 104 29 8.02	1282120.06	3283761.54	6724.00	6962.21	-6648.65	-2065.89	
KBL 1930 09H LP	N 40 7 21.41	W 104 29 8.15	1289134.40	3283671.51	6746.00	265.64	366.57	-2075.09	
Critical Points									
Critical Point		MD	INCL	AZIM	TVD	VSEC	N(+)/S(-)	E(+)/W(-)	DLS
Surface		0.00	0.00	0.00	0.00	0.00	0.00	0.00	
KB Adjustment		21.00	0.00	0.00	21.00	0.00	0.00	0.00	0.00
First SLB_MWD Survey		129.00	0.32	312.19	129.00	-0.13	0.20	-0.22	0.30
9 5/8" Casing		1700.00	21.54	300.07	1642.08	-83.13	183.89	-311.68	0.14
Cross Setback Heel (2180' FSL,1315' FWL)		7517.88	81.99	180.51	6728.73	264.99	366.45	-2072.52	7.51
Cross Setback Toe (460' FSL,1322.26' FWL)		14536.78	90.59	179.31	6723.35	6959.49	-6648.63	-2056.77	4.87
Last SLB_MWD Survey		14597.00	90.09	176.93	6722.90	7016.29	-6708.80	-2054.55	2.66
Projection to Bit (359' FSL, 1323' FWL)		14638.00	90.09	176.93	6722.83	7054.74	-6749.74	-2052.36	0.00

0

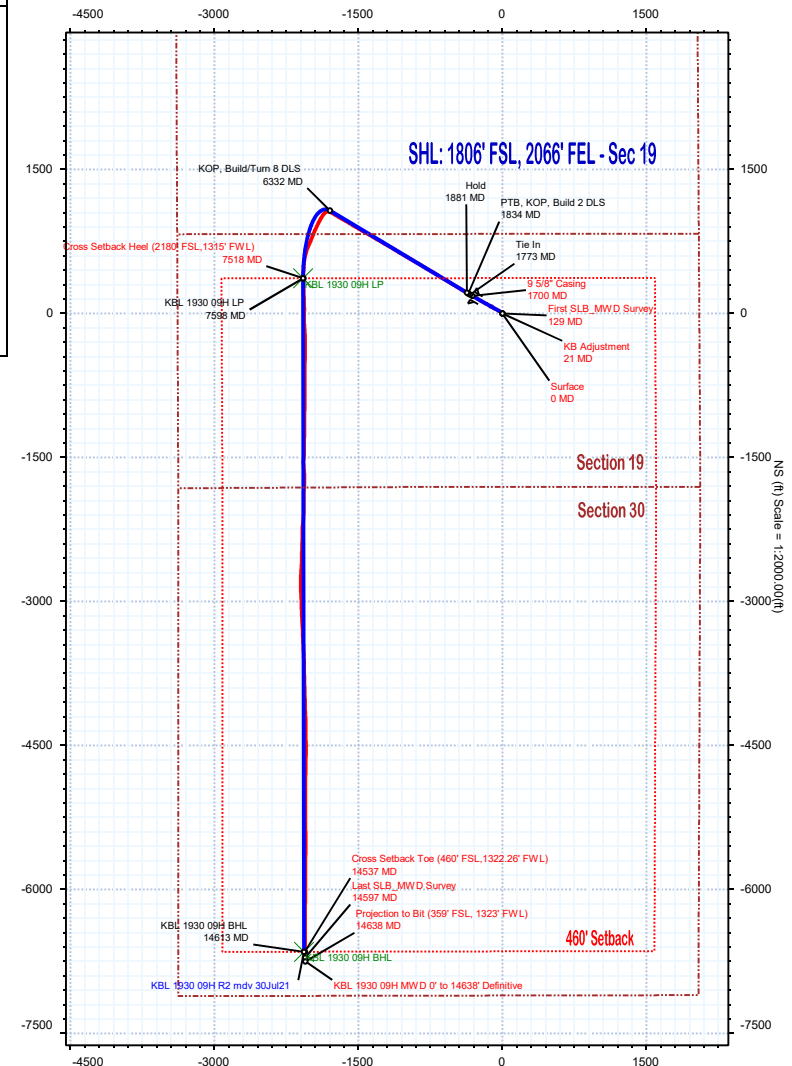
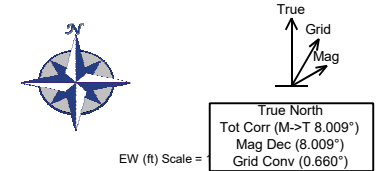
Surface  
0 MD 0 TVD  
0.00 ° incl 0.00 ° az  
0 vsec

KB Adjustment  
21 MD 21 TVD  
0.00 ° incl 0.00 ° az  
0 vsec

First SLB\_MWD Survey  
129 MD 129 TVD  
0.32 ° incl 312.19 ° az  
0 vsec



Vertical Section (ft) Azim = 201.82° Scale = 1:2000.00(ft) Origin = 0N/-S, 0E/-W



## KBL 1930 09H MWD 0' to 14638' Definitive Survey Geodetic Report

(Def Survey)

**Report Date:** August 05, 2021 - 08:14 AM  
**Client:** Verdad Resources LLC  
**Field:** CO, Weld County (NAD 83 NZ) - 2019  
**Structure / Slot:** Verdad Resources 19-02N-63W (KBL 1930 Pad) / KBL 1930 09H  
**Well:** KBL 1930 09H  
**Borehole:** Original Hole  
**UWI / API#:** Unknown / 05-123-50882  
**Survey Name:** KBL 1930 09H MWD 0' to 14638' Definitive  
**Survey Date:** July 30, 2021  
**Tort / AHD / DDI / ERD Ratio:** 308.262 ° / 9992.013 ft / 6.825 / 1.482  
**Coordinate Reference System:** NAD83 Colorado State Plane, Northern Zone, US Feet  
**Location Lat / Long:** N 40° 7' 17.78520", W 104° 28' 41.43720"  
**Location Grid N/E Y/X:** N 1288791.784 ftUS, E 3285750.595 ftUS  
**CRS Grid Convergence Angle:** 0.6602 °  
**Grid Scale Factor:** 0.99995937  
**Version / Patch:** 2.10.824.0

**Survey / DLS Computation:** Minimum Curvature / Lubinski  
**Vertical Section Azimuth:** 197.260 ° (True North)  
**Vertical Section Origin:** 0.000 ft, 0.000 ft  
**TVD Reference Datum:** KB 21ft  
**TVD Reference Elevation:** 4881.000 ft above MSL  
**Seabed / Ground Elevation:** 4860.000 ft above MSL  
**Magnetic Declination:** 8.009 °  
**Total Gravity Field Strength:** 999.0189mgn (9.80665 Based)  
**Gravity Model:** GARM  
**Total Magnetic Field Strength:** 51854.529 nT  
**Magnetic Dip Angle:** 66.472 °  
**Declination Date:** July 30, 2021  
**Magnetic Declination Model:** HDGM 2021  
**North Reference:** True North  
**Grid Convergence Used:** 0.0000 °  
**Total Corr Mag North→True North:** 8.0091 °  
**Local Coord Referenced To:** Well Head

Comments	MD (ft)	Incl (°)	Azim True (°)	TVD (ft)	VSEC (ft)	NS (ft)	EW (ft)	DLS (°/100ft)	Northing (ftUS)	Easting (ftUS)	Latitude (°)	Longitude (°)
Surface	0.00	0.00	0.00	0.00	0.00	0.00	0.00	N/A	1288791.78	3285750.59	40.121607	-104.478177
KB Adjustment	21.00	0.00	0.00	21.00	0.00	0.00	0.00	0.00	1288791.78	3285750.59	40.121607	-104.478177
First SLB_MWD Survey	129.00	0.32	312.19	129.00	-0.13	0.20	-0.22	0.30	1288791.98	3285750.37	40.121608	-104.478178
	217.00	0.49	17.36	217.00	-0.61	0.73	-0.29	0.52	1288792.51	3285750.29	40.121609	-104.478178
	299.00	1.45	327.42	298.99	-1.63	1.94	-0.75	1.46	1288793.71	3285749.83	40.121612	-104.478180
	388.00	2.83	309.75	387.92	-3.19	4.29	-3.04	1.70	1288796.04	3285747.50	40.121619	-104.478188
	478.00	4.82	310.35	477.72	-5.53	8.16	-7.63	2.21	1288799.85	3285742.87	40.121629	-104.478204
	568.00	6.90	305.67	567.24	-8.72	13.76	-14.91	2.37	1288805.37	3285735.53	40.121645	-104.478230
	658.00	9.13	301.43	656.36	-12.17	20.64	-25.39	2.56	1288812.13	3285724.97	40.121664	-104.478268
	748.00	11.63	300.78	744.88	-16.04	29.00	-39.28	2.78	1288820.33	3285710.98	40.121687	-104.478317
	838.00	13.55	298.68	832.71	-20.25	38.71	-56.33	2.19	1288829.84	3285693.83	40.121713	-104.478378
	928.00	15.01	297.30	919.93	-24.37	49.11	-75.93	1.67	1288840.02	3285674.10	40.121742	-104.478449
	1018.00	17.28	299.80	1006.37	-29.31	61.10	-97.89	2.64	1288851.75	3285652.01	40.121775	-104.478527
	1108.00	19.57	299.47	1091.76	-35.40	75.16	-122.62	2.55	1288865.53	3285627.12	40.121813	-104.478615
	1198.00	21.49	299.20	1176.04	-42.00	90.62	-150.13	2.14	1288880.67	3285599.43	40.121856	-104.478714
	1288.00	22.10	299.04	1259.60	-48.86	106.88	-179.33	0.68	1288896.59	3285570.06	40.121900	-104.478818
	1378.00	22.08	299.91	1343.00	-56.02	123.54	-208.79	0.36	1288912.90	3285540.40	40.121946	-104.478924
	1468.00	21.96	300.53	1426.43	-63.59	140.52	-237.95	0.29	1288929.55	3285511.05	40.121993	-104.479028
	1558.00	21.62	300.73	1510.00	-71.32	157.54	-266.70	0.39	1288946.23	3285482.11	40.122039	-104.479131
	1648.00	21.49	300.22	1593.71	-78.87	174.31	-295.19	0.25	1288962.67	3285453.42	40.122085	-104.479233
9 5/8" Casing	1700.00	21.54	300.07	1642.08	-83.13	183.89	-311.68	0.14	1288972.06	3285436.83	40.122112	-104.479291
	1738.00	21.57	299.96	1677.43	-86.21	190.87	-323.77	0.14	1288978.90	3285424.66	40.122131	-104.479335
	1773.00	21.27	299.16	1710.01	-88.93	197.18	-334.89	1.20	1288985.08	3285413.47	40.122148	-104.479374
	1881.00	21.43	299.68	1810.60	-97.22	216.49	-369.13	0.23	1289004.00	3285379.01	40.122201	-104.479497
	1970.00	20.99	299.98	1893.57	-104.22	232.50	-397.06	0.50	1289019.69	3285350.90	40.122245	-104.479597
	2060.00	20.99	299.89	1977.60	-111.30	248.59	-425.00	0.03	1289035.45	3285322.77	40.122289	-104.479697
	2149.00	21.13	301.22	2060.65	-118.65	264.85	-452.54	0.56	1289051.39	3285295.05	40.122334	-104.479795
	2239.00	21.20	302.37	2144.58	-126.81	281.97	-480.16	0.47	1289068.19	3285267.24	40.122381	-104.479894
	2328.00	21.58	300.16	2227.45	-134.66	298.81	-507.90	1.00	1289084.71	3285239.30	40.122427	-104.479993
	2418.00	20.13	301.90	2311.55	-142.27	315.32	-535.37	1.76	1289100.90	3285211.65	40.122473	-104.480091
	2507.00	21.15	301.31	2394.84	-150.04	331.75	-562.09	1.17	1289117.02	3285184.75	40.122518	-104.480187
	2597.00	20.97	299.62	2478.83	-157.43	348.15	-589.96	0.70	1289133.10	3285156.69	40.122563	-104.480287
	2686.00	21.45	300.20	2561.80	-164.48	364.21	-617.87	0.58	1289148.83	3285128.60	40.122607	-104.480386
	2775.00	21.41	301.94	2644.65	-172.24	380.99	-645.72	0.72	1289165.29	3285100.56	40.122653	-104.480486
	2865.00	21.93	301.95	2728.28	-180.67	398.58	-673.92	0.57	1289182.55	3285072.16	40.122701	-104.480587
	2954.00	21.24	301.64	2811.04	-188.89	415.83	-701.75	0.79	1289199.48	3285044.13	40.122748	-104.480686
	3043.00	22.28	299.33	2893.70	-196.42	432.55	-730.18	1.51	1289215.87	3285015.51	40.122794	-104.480788
	3133.00	22.46	300.93	2976.93	-204.05	449.75	-759.80	0.71	1289232.73	3284985.69	40.122842	-104.480894
	3222.00	22.23	301.71	3059.24	-212.27	467.33	-788.71	0.43	1289249.98	3284956.58	40.122890	-104.480997
	3311.00	22.32	300.52	3141.61	-220.35	484.76	-817.59	0.52	1289267.07	3284927.51	40.122938	-104.481101
	3401.00	22.29	300.03	3224.87	-228.04	501.98	-847.09	0.21	1289283.95	3284897.82	40.122985	-104.481206
	3490.00	22.02	301.37	3307.30	-235.84	519.12	-875.95	0.64	1289300.75	3284868.76	40.123032	-104.481309
	3580.00	22.44	300.52	3390.61	-243.90	536.63	-905.15	0.58	1289317.92	3284839.36	40.123080	-104.481414
	3669.00	22.17	300.99	3472.95	-251.78	553.90	-934.18	0.36	1289334.86	3284810.14	40.123127	-104.481517
	3759.00	22.15	299.63	3556.30	-259.45	571.03	-963.48	0.57	1289351.65	3284780.64	40.123174	-104.481622
	3849.00	21.91	300.49	3639.73	-266.92	587.94	-992.70	0.45	1289368.22	3284751.23	40.123221	-104.481727
	3938.00	22.35	300.59	3722.18	-274.63	604.98	-1021.57	0.50	1289384.92	3284722.16	40.123268	-104.481830
	4028.00	22.86	301.21	3805.26	-282.78	622.74	-1051.25	0.62	1289402.35	3284692.28	40.123316	-104.481936
	4117.00	22.26	300.96	3887.45	-290.94	640.37	-1080.50	0.68	1289419.64	3284662.84	40.123365	-104.482041
	4206.00	22.17	300.93	3969.85	-298.90	657.67	-1109.36	0.10	1289436.60	3284633.78	40.123412	-104.482144
	4296.00	20.95	301.02	4053.55	-306.74	674.69	-1137.72	1.36	1289453.29	3284605.23	40.123459	-104.482245
	4386.00	22.15	300.62	4137.26	-314.49	691.63	-1166.11	1.35	1289469.90	3284576.65	40.123505	-104.482347
	4475.00	22.04	299.12	4219.72	-321.80	708.30	-1195.14	0.65	1289486.24	3284547.43	40.123551	-104.482451
	4565.00	22.33	300.18	4303.05	-329.09	725.12	-1224.67	0.55	1289502.71	3284517.70	40.123597	-104.482555
	4654.00	22.46	301.07	4385.34	-336.93	742.39	-1253.85	0.40	1289519.65	3284488.33	40.123645	-104.482661
	4744.00	22.11	300.19	4468.62	-344.83	759.78	-1283.22	0.54	1289536.70	3284458.76	40.123693	-104.482766
	4833.00	21.15	299.74	4551.35	-352.05	776.17	-1311.64	1.10	1289552.76	3284430.16	40.123738	-104.482867
	4923.00	21.53	301.51	4635.18	-359.62	792.86	-1339.81	0.83	1289569.12	3284401.79	40.123783	-104.482968
	5012.00	22.16	300.66	4717.79	-367.53	809.96	-1368.18	0.79	1289585.89	3284373.23	40.123830	-104.483069
	5102.00	21.39	300.17	4801.37	-375.13	826.86	-1396.97	0.88	1289602.46	3284344.25	40.123877	-104.483172
	5192.00	21.73	296.33	4885.07	-381.43	842.50	-1426.09	1.61	1289617.76	3284314.95	40.123920	-104.483276
	5281.00	22.35	300.58	4967.57	-387.92	858.41	-1455.43	1.92	1289633.34	3284285.43	40.123963	-104.483381
	5370.00	22.21	300.71	5049.93	-395.73	875.61	-1484.46	0.17	1289650.20	3284256.20	40.124010	-104.483485
	5460.00	22.20	301.33	5133.25	-403.82	893.14	-1513.61	0.26	1289667.39	3284226.86	40.124059	-104.483589
	5549.00	21.32	300.26	5215.91	-411.55	910.04	-1541.95	1.08	1289683.95	3284198.32	40.124105	-104.483691
	5638.00	21.97	301.32	5298.63	-419.23	926.84	-1570.15	0.85	1289700.44	3284169.93	40.124151	-104.483792
	5728.00	22.04	300.58	5382.08	-427.21	944.19	-1599.07	0.32	1289717.44	3284140.82	40.124199	-104.483895
	5817.00	21.86	300.50	5464.62	-434.85	961.10	-1627.73	0.21	1289734.02	3284111.97	40.124245	-104.483997
	5907.00	21.70	299.43	5548.20	-442.20	977.77	-1656.66	0.48	1289750.36	3284082.85	40.124291	-104.484101
	5996.00	21.63	300.43	5630.91	-449.40	994.17	-1685.14	0.42	1289766.43	3284054.19	40.124336	-104.484203
	6085.00	22.18	300.62	5713.48	-457.02	1011.03	-1713.74	0.62	1289782.96	3284025.39	40.124382	-104.484305
	6175.00	22.15	300.45	5796.83	-464.82	1028.28	-1742.98	0.08	1289799.87	3283995.95	40.124429	-104.484

Comments	MD (ft)	Incl (°)	Azim True (°)	TVD (ft)	VSEC (ft)	NS (ft)	EW (ft)	DLS (°/100ft)	Northing (ftUS)	Easting (ftUS)	Latitude (°)	Longitude (°)
	6712.00	31.91	208.84	6294.80	-375.97	982.42	-1894.81	7.86	1289752.26	3283844.67	40.124304	-104.484953
	6801.00	36.66	205.99	6368.32	-326.63	937.90	-1917.81	5.63	1289707.48	3283822.18	40.124181	-104.485035
	6890.00	43.07	205.26	6436.59	-270.22	886.48	-1942.45	7.22	1289655.79	3283798.14	40.124040	-104.485123
	6980.00	47.01	202.60	6500.18	-206.99	828.27	-1968.22	4.85	1289597.29	3283773.04	40.123880	-104.485215
	7069.00	53.76	202.50	6556.90	-138.76	764.99	-1994.50	7.58	1289533.71	3283747.50	40.123707	-104.485309
	7159.00	60.88	202.54	6605.46	-63.37	695.06	-2023.50	7.91	1289463.45	3283719.31	40.123515	-104.485413
	7248.00	64.64	195.57	6646.23	15.64	620.32	-2049.22	8.14	1289388.42	3283694.45	40.123310	-104.485505
	7339.00	67.82	186.27	6682.97	98.27	538.66	-2064.90	9.98	1289306.59	3283679.72	40.123085	-104.485561
	7429.00	75.43	181.77	6711.34	181.31	453.54	-2070.80	9.69	1289221.41	3283674.79	40.122852	-104.485582
Cross Setback Heel (2180' FSL, 1315' FWL)	7517.88	81.99	180.51	6728.73	264.99	366.45	-2072.52	7.51	1289134.31	3283674.08	40.122613	-104.485588
	7519.00	82.07	180.49	6728.89	266.05	365.34	-2072.53	7.51	1289133.20	3283674.08	40.122610	-104.485588
	7606.00	87.88	177.83	6736.51	348.38	278.73	-2071.25	7.34	1289046.61	3283676.36	40.122372	-104.485583
	7695.00	87.71	177.38	6739.93	432.13	189.87	-2067.54	0.54	1288957.81	3283681.10	40.122128	-104.485570
	7785.00	89.98	178.78	6741.74	517.11	99.95	-2064.52	2.96	1288867.93	3283685.15	40.121881	-104.485559
	7874.00	89.83	180.65	6741.89	601.97	10.95	-2064.08	2.11	1288778.95	3283686.61	40.121637	-104.485558
	7964.00	90.48	179.81	6741.64	688.02	-79.04	-2064.44	1.18	1288688.96	3283687.29	40.121390	-104.485559
	8054.00	90.35	175.23	6740.99	772.71	-168.93	-2060.54	5.09	1288599.13	3283692.22	40.121143	-104.485545
	8143.00	90.67	179.29	6740.19	856.32	-257.81	-2056.29	4.57	1288510.31	3283697.50	40.120899	-104.485530
	8233.00	90.36	180.56	6739.38	942.22	-347.80	-2056.17	1.46	1288420.33	3283698.66	40.120652	-104.485529
	8322.00	90.48	180.47	6738.73	1027.45	-436.80	-2056.97	0.16	1288331.33	3283698.88	40.120408	-104.485532
	8411.00	90.24	180.35	6738.17	1112.63	-525.79	-2057.61	0.30	1288242.34	3283699.27	40.120163	-104.485534
	8501.00	89.67	181.18	6738.24	1198.92	-615.78	-2058.81	1.12	1288152.34	3283699.10	40.119916	-104.485539
	8590.00	89.57	180.65	6738.83	1284.32	-704.77	-2060.23	0.61	1288063.35	3283698.71	40.119672	-104.485544
	8680.00	89.78	179.97	6739.34	1370.41	-794.77	-2060.72	0.79	1287973.36	3283699.26	40.119425	-104.485545
	8770.00	89.69	179.69	6739.76	1456.28	-884.77	-2060.45	0.33	1287883.37	3283700.56	40.119178	-104.485544
	8859.00	89.41	180.22	6740.46	1541.25	-973.76	-2060.38	0.67	1287794.39	3283701.66	40.118934	-104.485544
	8949.00	89.38	180.86	6741.41	1627.43	-1063.75	-2061.23	0.71	1287704.40	3283701.85	40.118687	-104.485547
	9038.00	89.75	180.60	6742.08	1712.75	-1152.74	-2062.36	0.50	1287615.40	3283701.74	40.118442	-104.485551
	9128.00	89.94	180.42	6742.33	1798.93	-1242.74	-2063.16	0.29	1287525.41	3283701.98	40.118195	-104.485554
	9217.00	90.25	181.89	6742.17	1884.44	-1331.72	-2064.95	1.69	1287436.42	3283701.22	40.117951	-104.485560
	9307.00	89.71	179.67	6742.21	1970.73	-1421.71	-2066.17	2.54	1287346.43	3283701.03	40.117704	-104.485565
	9396.00	89.75	184.56	6742.63	2056.62	-1510.62	-2069.46	5.50	1287257.49	3283698.77	40.117460	-104.485576
	9486.00	90.56	174.79	6742.39	2142.30	-1600.50	-2068.95	10.90	1287167.61	3283700.31	40.117213	-104.485574
	9575.00	90.42	177.91	6741.63	2225.43	-1689.31	-2063.28	3.52	1287078.88	3283707.00	40.116970	-104.485554
	9665.00	90.33	182.55	6741.04	2311.46	-1779.28	-2063.64	5.15	1286988.92	3283707.68	40.116723	-104.485555
	9754.00	90.26	182.35	6740.59	2397.50	-1868.20	-2067.45	0.23	1286899.97	3283704.90	40.116478	-104.485569
	9844.00	89.97	179.98	6740.41	2483.97	-1958.17	-2069.28	2.66	1286809.98	3283704.10	40.116232	-104.485576
	9934.00	90.60	180.38	6739.96	2570.00	-2048.17	-2069.57	0.83	1286719.99	3283704.85	40.115984	-104.485577
	10023.00	90.90	184.73	6738.79	2656.05	-2137.05	-2073.53	4.90	1286631.07	3283701.91	40.115740	-104.485591
	10113.00	90.66	184.58	6737.57	2743.88	-2226.75	-2080.84	0.32	1286541.30	3283695.64	40.115494	-104.485617
	10202.00	90.17	179.21	6736.93	2829.66	-2315.67	-2083.78	6.07	1286452.36	3283693.73	40.115250	-104.485627
	10292.00	90.39	182.28	6736.49	2915.94	-2405.65	-2084.95	3.42	1286362.38	3283693.59	40.115003	-104.485631
	10381.00	90.37	181.94	6735.89	3001.84	-2494.58	-2088.22	0.38	1286273.41	3283691.34	40.114759	-104.485643
	10471.00	90.44	180.65	6735.26	3088.37	-2584.56	-2090.26	1.44	1286183.42	3283690.34	40.114512	-104.485650
	10560.00	90.72	185.13	6734.36	3174.55	-2673.42	-2094.74	5.04	1286094.52	3283686.89	40.114268	-104.485666
	10650.00	90.20	180.32	6733.63	3261.64	-2763.28	-2099.01	5.38	1286004.61	3283683.65	40.114021	-104.485682
	10739.00	90.31	179.43	6733.24	3346.58	-2852.28	-2098.82	1.00	1285915.63	3283684.87	40.113777	-104.485681
	10828.00	90.56	176.63	6732.57	3430.60	-2941.22	-2095.76	3.16	1285826.74	3283688.95	40.113533	-104.485670
	10918.00	90.15	179.14	6732.02	3515.49	-3031.15	-2092.44	2.82	1285736.86	3283693.31	40.113286	-104.485658
	11007.00	90.42	176.85	6731.58	3599.50	-3120.09	-2089.32	2.59	1285647.96	3283697.45	40.113042	-104.485647
	11097.00	90.52	177.31	6730.84	3683.97	-3209.97	-2084.73	0.52	1285558.15	3283703.08	40.112795	-104.485630
	11187.00	90.22	177.40	6730.26	3768.59	-3299.87	-2080.58	0.35	1285468.30	3283708.27	40.112549	-104.485616
	11276.00	90.97	177.04	6729.34	3852.20	-3388.76	-2076.27	0.93	1285379.47	3283713.60	40.112305	-104.485600
	11366.00	90.02	177.99	6728.56	3936.91	-3478.67	-2072.37	1.49	1285289.62	3283718.53	40.112058	-104.485586
	11455.00	89.76	177.55	6728.74	4020.81	-3567.60	-2068.91	0.57	1285200.73	3283723.02	40.111814	-104.485574
	11545.00	89.76	179.19	6729.12	4105.96	-3657.56	-2066.35	1.82	1285110.81	3283726.62	40.111567	-104.485565
	11634.00	90.32	178.03	6729.06	4190.28	-3746.53	-2064.19	1.44	1285021.88	3283729.80	40.111322	-104.485557
	11724.00	89.47	178.73	6729.23	4275.44	-3836.49	-2061.65	1.22	1284931.95	3283733.38	40.111075	-104.485548
	11813.00	89.86	178.32	6729.75	4359.72	-3925.46	-2059.36	0.63	1284843.02	3283736.69	40.110831	-104.485539
	11903.00	89.89	178.82	6729.95	4444.98	-4015.44	-2057.12	0.55	1284753.08	3283739.97	40.110584	-104.485531
	11992.00	90.18	178.78	6729.90	4529.40	-4104.42	-2055.25	0.33	1284664.13	3283742.86	40.110340	-104.485525
	12081.00	90.27	176.33	6729.55	4613.18	-4193.33	-2051.46	2.75	1284575.28	3283747.67	40.110096	-104.485511
	12171.00	89.48	179.72	6729.74	4698.14	-4283.26	-2048.36	3.86	1284485.39	3283751.81	40.109849	-104.485500
	12260.00	90.30	180.48	6729.91	4783.18	-4372.26	-2048.52	1.26	1284396.40	3283752.68	40.109605	-104.485501
	12350.00	90.34	177.73	6729.41	4868.69	-4462.24	-2047.11	3.05	1284306.45	3283755.13	40.109358	-104.485496
	12439.00	89.49	181.18	6729.54	4953.41	-4551.22	-2046.26	3.99	1284217.48	3283757.00	40.109114	-104.485492
	12529.00	89.61	181.29	6730.25	5039.91	-4641.20	-2048.20	0.18	1284127.49	3283756.10	40.108867	-104.485499
	12618.00	89.93	180.23	6730.60	5125.24	-4730.19	-2049.38	1.25	1284038.50	3283755.94	40.108622	-104.485504
	12708.00	90.00	181.79	6730.66	5211.65	-4820.17	-2050.97	1.73	1283948.51	3283755.39	40.108375	-104.485509
	12797.00	90.20	179.15	6730.51	5296.84	-4909.16	-2051.70	2.97	1283859.52	3283755.69	40.108131	-104.485512
	12886.00	89.75	180.22	6730.55	5381.69	-4998.15	-2051.21	1.30	1283770.54	3283757.20	40.107887	-104.485510
	12976.00	89.60	180.82	6731.06	5467.88	-5086.15	-2052.03	0.69	1283680.55	3283757.41	40.107640	-104.485513
	13065.00	89.31	181.00	6731.91	5553.27	-5177.13	-2053.45	0.39	1283591.55	3283757.02	40.107395	-104.485518
	13155.00	90.16	179.59	6732.33	5639.35	-5267.13	-2053.92	1.83	1283501.56	3283757.59	40.107148	-104.485520
	13245.00	90.48	177.76	6731.83	5724.66	-5357.10	-2051.84	2.07	1283411.63	3283760.70	40.106901	-104.485512
	13334.00	90.13	179.12	6731.36	5808.90	-5446.06	-2049.42	1.58	1283322.70	3283764.15	40.106657	-104.485503
	13424.00	89.65	180.71	6731.53	5894.80	-5536.06	-2049.29	1.85	1283232.72	3283765.32	40.106410	-104.485503
	13513.00	89.74	18									

Comments	MD (ft)	Incl (°)	Azim True (°)	TVD (ft)	VSEC (ft)	NS (ft)	EW (ft)	DLS (°/100ft)	Northing (ftUS)	Easting (ftUS)	Latitude (°)	Longitude (°)
Survey Error Model: Survey Program:	ISCWSA Rev 0 *** 3-D 95.000% Confidence 2.7955 sigma											
Description	Part	MD From (ft)	MD To (ft)	EOU Freq (ft)	Hole Size	Casing Diameter (in)	Survey Tool Type	Borehole / Survey				
	1	0.000	21.000	1/98.425	13.500	9.625	NAL_MWD_PLUS_0.5_DEG- Depth Only	Original Hole / KBL 1930 09H MWD 0' to 14638' Definitive				
	1	21.000	21.000	Act Stns	13.500	9.625	NAL_MWD_PLUS_0.5_DEG- Depth Only	Original Hole / KBL 1930 09H MWD 0' to 14638' Definitive				
	1	21.000	1773.000	Act Stns	13.500	9.625	NAL_MWD_PLUS_0.5_DEG	Original Hole / KBL 1930 09H MWD 0' to 14638' Definitive				
	1	1773.000	14638.000	Act Stns	8.500	5.500	NAL_MWD_PLUS_0.5_DEG	Original Hole / KBL 1930 09H MWD 0' to 14638' Definitive				