



Verdad Resources LLC

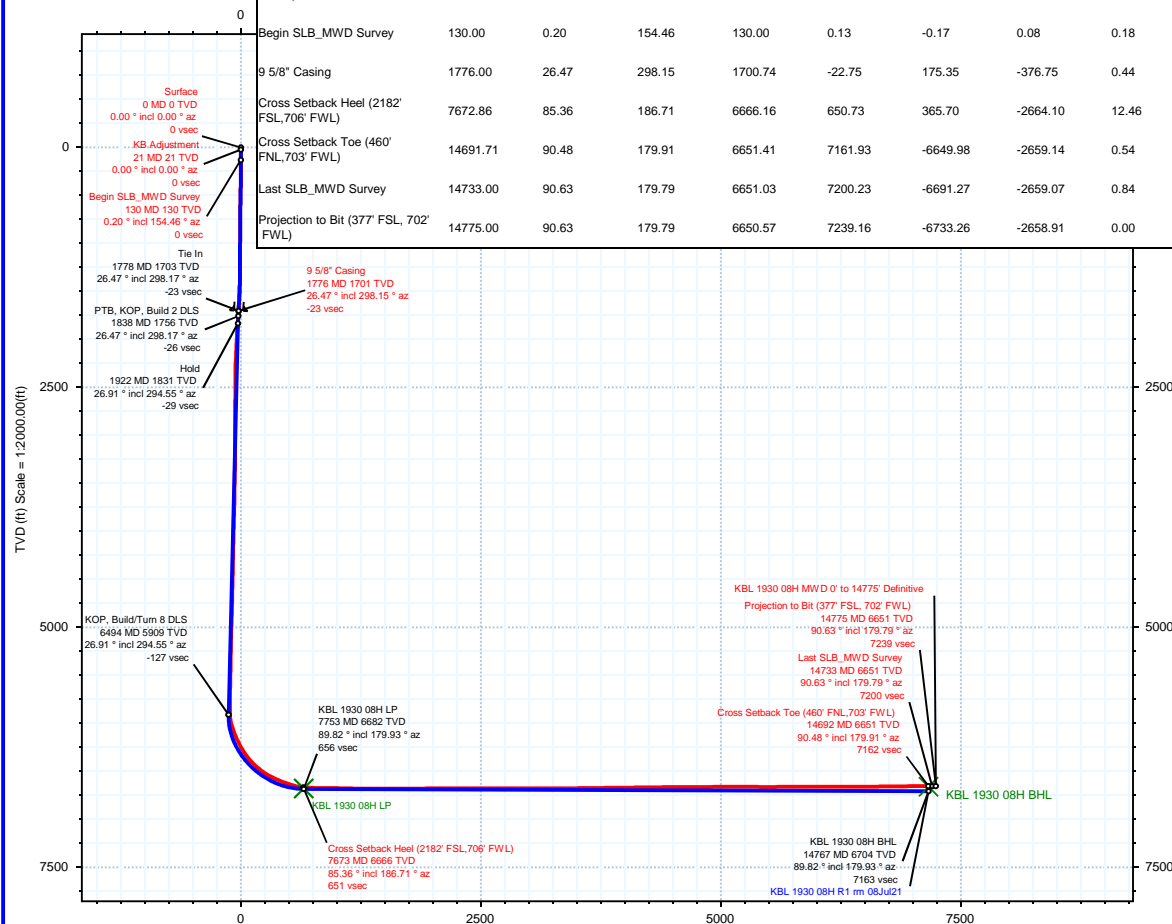


Borehole: Original Hole	Well: KBL 1930 08H	Field: CO, Weld County (NAD 83 NZ) - 2019	Structure: Verdad Resources 19-02N-63W (KBL 1930 Pad)
-----------------------------------	------------------------------	---	---

Gravity & Magnetic Parameters Model: HDGM 2021 Dip: 66.473° Date: 26-Jul-2021 MagDec: 8.01° FS: 51855.613NT Gravity FS: 999.019mgn (9.80665 Based)	Surface Location NAD83 Colorado State Plane, Northern Zone, US Feet Lat: N 40 7 17.79 Northing: 1288791.61ftUS Grid Conv: 0.6602° Lon: W 104 28 41.63 Easting: 3285735.77ftUS Scale Fact: 0.99995937	Miscellaneous Slot: KBL 1930 08H TVD Ref: KB 21ft(4881ft above MSL) Plan: KBL 1930 08H MWD 0' to 14775' Definitive
---	---	--

Surface Location									
Northing: 1288791.6135313		Easting: 3285735.7739982		Latitude: N 40 7 17.79		Longitude: W 104 28 41.63		VSec Azimuth: 201.82	
Target Description				Grid Coord				Local Coord	
Target Name		Latitude	Longitude	Northing	Easting	TVD	VSec	N(+)/S(-)	E(+)/W(-)
KBL 1930 Pad Sec 19-30 460' SB		N 40 7 17.79	W 104 28 41.82	1288791.80	3285720.67	4881.00	5.28	0.36	-15.10
KBL 1930 Pad Sec 19-30		N 40 7 17.79	W 104 28 41.82	1288791.80	3285720.67	4881.00	5.28	0.36	-15.10
KBL 1930 Pad Sec 19 - Mid line		N 40 7 17.79	W 104 28 41.82	1288791.80	3285720.67	4881.00	5.28	0.36	-15.10
KBL 1930 08H BHL		N 40 6 12.07	W 104 29 15.90	1282111.61	3283149.55	6659.00	7163.48	-6650.05	-2663.13
KBL 1930 08H LP		N 40 7 21.37	W 104 29 16.03	1289124.13	3283059.71	6677.00	655.91	363.35	-2672.17

Critical Points									
Critical Point	MD	INCL	AZIM	TVD	VSEC	N(+)/S(-)	E(+)/W(-)	DLS	
Surface	0.00	0.00	0.00	0.00	0.00	0.00	0.00	0.00	
KB Adjustment	21.00	0.00	0.00	21.00	0.00	0.00	0.00	0.00	
Begin SLB_MWD Survey	130.00	0.20	154.46	130.00	0.13	-0.17	0.08	0.18	
9 5/8" Casing	1776.00	26.47	298.15	1700.74	-22.75	175.35	-376.75	0.44	
Cross Setback Heel (2182' FSL, 706' FWL)	7672.86	85.36	186.71	6666.16	650.73	365.70	-2664.10	12.46	
Cross Setback Toe (460' FNL, 703' FWL)	14691.71	90.48	179.91	6651.41	7161.93	-6649.98	-2659.14	0.54	
Last SLB_MWD Survey	14733.00	90.63	179.79	6651.03	7200.23	-6691.27	-2659.07	0.84	
Projection to Bit (377' FSL, 702' FWL)	14775.00	90.63	179.79	6650.57	7239.16	-6733.26	-2658.91	0.00	



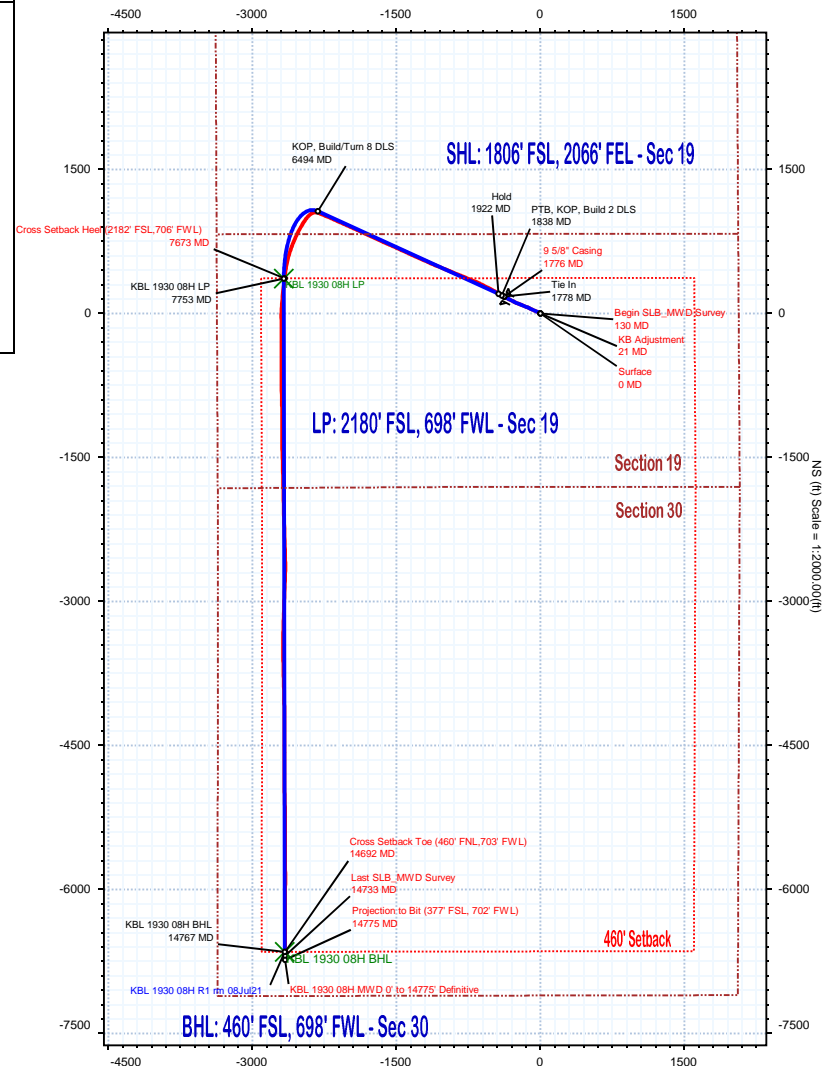
Vertical Section (ft) Azim = 201.82° Scale = 1:2000.00(ft) Origin = 0N/-S, 0E/-W

Proposal



True North
Tot Corr (M->T 8.010°)
Mag Dec (8.010°)
Grid Conv (0.660°)

EW (ft) Scale =



KBL 1930 08H MWD 0' to 14775' Definitive Survey Geodetic Report

(Def Survey)

Report Date: August 03, 2021 - 12:47 PM
Client: Verdad Resources LLC
Field: CO, Weld County (NAD 83 NZ) - 2019
Structure / Slot: Verdad Resources 19-02N-63W (KBL 1930 Pad) / KBL 1930 08H
Well: KBL 1930 08H
Borehole: Original Hole
UWI / API#: Unknown / 05-123-50889
Survey Name: KBL 1930 08H MWD 0' to 14775' Definitive
Survey Date: July 26, 2021
Tort / AHD / DDI / ERD Ratio: 246.256 ° / 10463.450 ft / 6.756 / 1.567
Coordinate Reference System: NAD83 Colorado State Plane, Northern Zone, US Feet
Location Lat / Long: N 40° 7' 17.78520", W 104° 28' 41.62800"
Location Grid N/E Y/X: N 1288791.614 ftUS, E 3285735.774 ftUS
CRS Grid Convergence Angle: 0.6602 °
Grid Scale Factor: 0.99995937
Version / Patch: 2.10.826.8

Survey / DLS Computation: Minimum Curvature / Lubinski
Vertical Section Azimuth: 201.820 ° (True North)
Vertical Section Origin: 0.000 ft, 0.000 ft
TVD Reference Datum: KB 21ft
TVD Reference Elevation: 4881.000 ft above MSL
Seabed / Ground Elevation: 4860.000 ft above MSL
Magnetic Declination: 8.010 °
Total Gravity Field Strength: 999.0189mgn (9.80665 Based)
Gravity Model: GARM
Total Magnetic Field Strength: 51855.613 nT
Magnetic Dip Angle: 66.473 °
Declination Date: July 26, 2021
Magnetic Declination Model: HDGM 2021
North Reference: True North
Grid Convergence Used: 0.0000 °
Total Corr Mag North->True North: 8.0101 °
Local Coord Referenced To: Well Head

Comments	MD (ft)	Incl (°)	Azim True (°)	TVD (ft)	VSEC (ft)	NS (ft)	EW (ft)	DLS (°/100ft)	Northing (ftUS)	Easting (ftUS)	Latitude (°)	Longitude (°)
Surface	0.00	0.00	0.00	0.00	0.00	0.00	0.00	N/A	1288791.61	3285735.77	40.121607	-104.478230
KB Adjustment	21.00	0.00	0.00	21.00	0.00	0.00	0.00	0.00	1288791.61	3285735.77	40.121607	-104.478230
Begin												
SLB_MWD	130.00	0.20	154.46	130.00	0.13	-0.17	0.08	0.18	1288791.44	3285735.86	40.121607	-104.478230
Survey												
	218.00	0.30	292.34	218.00	0.23	-0.22	-0.06	0.53	1288791.39	3285735.71	40.121606	-104.478230
	300.00	1.45	301.72	299.99	0.05	0.40	-1.15	1.41	1288792.00	3285734.62	40.121608	-104.478234
	389.00	3.01	303.07	388.92	-0.60	2.27	-4.06	1.75	1288793.84	3285731.69	40.121613	-104.478245
	479.00	4.94	301.36	478.70	-1.70	5.58	-9.35	2.15	1288797.08	3285726.36	40.121622	-104.478263
	569.00	7.26	302.75	568.18	-3.42	10.67	-17.44	2.58	1288802.08	3285718.21	40.121636	-104.478292
	659.00	9.12	296.27	657.26	-5.05	16.91	-28.62	2.30	1288808.19	3285706.96	40.121653	-104.478332
	749.00	11.29	289.85	745.84	-5.31	23.05	-43.31	2.72	1288814.17	3285692.20	40.121670	-104.478385
	839.00	13.17	293.14	833.79	-5.24	30.08	-61.03	2.23	1288820.98	3285674.41	40.121690	-104.478448
	929.00	14.98	295.31	921.09	-6.18	39.08	-80.97	2.09	1288829.76	3285654.37	40.121714	-104.478520
	1019.00	16.61	296.02	1007.68	-7.83	49.70	-103.05	1.82	1288840.12	3285632.16	40.121743	-104.478598
	1109.00	18.54	293.61	1093.48	-9.22	61.07	-127.72	2.29	1288851.21	3285607.36	40.121775	-104.478687
	1199.00	20.56	290.68	1178.29	-9.36	72.38	-155.62	2.49	1288862.20	3285579.34	40.121806	-104.478786
	1289.00	22.46	291.65	1262.02	-8.99	84.31	-186.39	2.15	1288873.77	3285548.44	40.121838	-104.478896
	1379.00	24.59	292.69	1344.53	-9.22	97.88	-219.65	2.41	1288886.95	3285515.02	40.121876	-104.479015
	1469.00	26.11	294.38	1425.87	-10.39	113.28	-254.96	1.87	1288901.94	3285479.93	40.121918	-104.479142
	1559.00	26.48	297.05	1506.56	-13.11	130.58	-290.87	1.38	1288918.82	3285443.43	40.121965	-104.479270
	1649.00	26.54	297.47	1587.09	-16.91	148.98	-326.58	0.22	1288936.81	3285407.07	40.122016	-104.479398
	1739.00	26.49	297.79	1667.63	-20.98	167.61	-362.18	0.17	1288955.03	3285371.70	40.122067	-104.479525
9 5/8" Casing	1776.00	26.47	298.15	1700.74	-22.75	175.35	-376.75	0.44	1288962.60	3285357.04	40.122088	-104.479577
	1778.00	26.47	298.17	1702.54	-22.85	175.77	-377.54	0.44	1288963.01	3285356.25	40.122089	-104.479580
	1959.00	26.69	301.42	1864.41	-34.09	216.00	-447.79	0.81	1289002.43	3285285.54	40.122200	-104.479831
	2048.00	27.50	296.60	1943.66	-39.13	235.63	-483.22	2.63	1289021.65	3285249.89	40.122254	-104.479958
	2138.00	27.06	298.94	2023.65	-43.40	254.84	-519.72	1.29	1289040.43	3285213.17	40.122307	-104.480088
	2227.00	27.04	296.24	2102.91	-47.47	273.58	-555.58	1.38	1289058.76	3285177.10	40.122358	-104.480217
	2317.00	27.21	296.95	2183.01	-50.89	291.95	-592.28	0.41	1289076.71	3285140.20	40.122408	-104.480348
	2406.00	27.14	297.54	2262.19	-54.73	310.56	-628.42	0.31	1289094.90	3285103.85	40.122459	-104.480477
	2496.00	26.93	292.04	2342.37	-56.86	327.70	-665.51	2.79	1289111.61	3285066.56	40.122507	-104.480610
	2585.00	27.06	291.56	2421.67	-56.84	342.70	-703.02	0.28	1289126.18	3285028.88	40.122548	-104.480744
	2674.00	27.16	292.17	2500.89	-56.88	357.81	-740.66	0.33	1289140.85	3284991.07	40.122589	-104.480878
	2764.00	26.79	292.59	2581.10	-57.28	373.35	-778.41	0.46	1289155.96	3284953.14	40.122632	-104.481013
	2853.00	26.91	293.60	2660.50	-58.17	389.13	-815.39	0.53	1289171.30	3284915.99	40.122675	-104.481146
	2942.00	27.10	291.61	2739.80	-58.73	404.65	-852.69	1.04	1289186.40	3284878.51	40.122718	-104.481279
	3031.00	27.08	291.74	2819.04	-58.62	419.62	-890.35	0.07	1289200.93	3284840.68	40.122759	-104.481414
	3121.00	27.09	292.17	2899.17	-58.72	434.94	-928.36	0.22	1289215.81	3284802.51	40.122801	-104.481550
	3210.00	26.54	291.83	2978.60	-58.85	449.98	-965.58	0.64	1289230.42	3284765.11	40.122842	-104.481683
	3300.00	26.97	292.33	3058.97	-59.03	465.21	-1003.12	0.53	1289245.22	3284727.40	40.122884	-104.481817
	3390.00	26.93	292.32	3139.19	-59.39	480.71	-1040.86	0.04	1289260.28	3284689.49	40.122926	-104.481952
	3479.00	26.69	292.13	3218.62	-59.67	495.89	-1078.02	0.29	1289275.03	3284652.16	40.122968	-104.482085
	3569.00	26.82	292.01	3298.99	-59.85	511.12	-1115.56	0.15	1289289.82	3284614.44	40.123010	-104.482219
	3658.00	26.14	296.88	3378.66	-61.31	527.20	-1151.82	2.08	1289305.49	3284578.01	40.123054	-104.482349
	3748.00	26.93	293.41	3459.18	-63.28	543.95	-1188.36	1.51	1289321.81	3284541.28	40.123100	-104.482479
	3837.00	26.71	293.40	3538.61	-64.39	559.90	-1225.21	0.24	1289337.34	3284504.25	40.123144	-104.482611
	3927.00	26.32	293.80	3619.14	-65.63	575.99	-1262.04	0.48	1289353.00	3284467.24	40.123188	-104.482743
	4016.00	26.45	294.18	3698.86	-67.13	592.07	-1298.18	0.24	1289368.66	3284430.92	40.123232	-104.482872
	4106.00	27.82	294.21	3778.95	-68.83	608.90	-1335.62	1.52	1289385.05	3284393.28	40.123278	-104.483006
	4195.00	26.86	296.37	3858.01	-71.29	626.34	-1372.58	1.55	1289402.07	3284356.13	40.123326	-104.483138
	4285.00	26.90	293.29	3938.29	-73.43	643.42	-1409.49	1.55	1289418.73	3284319.02	40.123370	-104.483270
	4374.00	26.98	294.52	4017.63	-74.89	659.76	-1446.36	0.64	1289434.64	3284281.97	40.123418	-104.483402
	4464.00	27.50	294.01	4097.65	-76.65	676.69	-1483.92	0.63	1289451.13	3284244.22	40.123464	-104.483536
	4553.00	27.00	294.41	4176.77	-78.35	693.40	-1521.08	0.60	1289467.41	3284206.87	40.123510	-104.483669
	4643.00	26.90	294.56	4257.00	-80.25	710.31	-1558.21	0.14	1289483.89	3284169.55	40.123557	-104.483802
	4732.00	27.03	293.08	4336.32	-81.65	726.60	-1595.12	0.77	1289499.76	3284132.45	40.123601	-104.483934
	4822.00	26.79	294.95	4416.58	-83.21	743.17	-1632.33	0.98	1289515.90	3284095.06	40.123647	-104.484067
	4912.00	27.05	294.45	4496.83	-85.26	760.20	-1669.34	0.38	1289532.50	3284057.85	40.123694	-104.484199
	5001.00	26.82	294.63	4576.18	-87.17	776.94	-1706.01	0.28	1289548.82	3284020.99	40.123740	-104.484330
	5090.00	26.84	294.03	4655.60	-88.93	793.49	-1742.61	0.30	1289564.94	3283984.21	40.123785	-104.484461
	5180.00	26.62	294.56	4735.98	-90.68	810.15	-1779.51	0.36	1289581.17	3283947.13	40.123831	-104.484593
	5269.00	26.59	294.97	4815.56	-92.73	826.84	-1815.70	0.21	1289597.45	3283910.75	40.123877	-104.484723
	5359.00	26.67	293.91	4896.01	-94.57	843.53	-1852.42	0.54	1289613.71	3283873.83	40.123922	-104.484854
	5448.00	26.98	296.19	4975.43	-96.83	860.54	-1888.80	1.21	1289630.30	3283837.26	40.123969	-104.484984
	5537.00	27.02	294.61	5054.73	-99.35	877.87	-1925.30	0.81	1289647.20	3283800.57	40.124017	-104.485115
	5627.00	26.75	294.18	5135.01	-101.18	894.68	-1962.36	0.37	1289663.58	3283763.32	40.124063	-104.485247
	5716.00	26.63	294.13	5214.52	-102.81	911.03	-1998.84	0.14	1289679.52	3283726.66	40.124108	-104.485377
	5806.00	26.78	293.62	5294.92	-104.26	927.40	-2035.82	0.31	1289695.46	3283689.49	40.124153	-104.485510
	5895.00	26.39	294.50	5374.51	-105.82	943.64	-2072.19	0.63	1289711.27	3283652.93	40.124197	-104.485640
	5985.00	26.09	294.00	5455.24	-107.50	959.98	-2108.47	0.41	1289727.20	3283616.47	40.124242	-104.485770
	6074.00	26.55	294.35	5535.01	-109.13	976.14	-2144.47	0.54	1289742.94	3283580.29	40.124286	-104.485898
	6163.00	26.45	293.44	5614.66	-110.56	992.23	-2180.77	0.47	1289758.61	3283543.81	40.124330	-104.486028
	6253.00	26.71	293.23	5695.15	-111.63	1008.18	-2217.75	0.31	1289774.13	3283506.65	40.124374	-104.486160
	6343.00	26.44	293.53	5775.64	-112.72	1024.15	-2254.71	0.33	1289789.68	3283469.51	40.124418	-104

Comments	MD (ft)	Incl (°)	Azim True (°)	TVD (ft)	VSEC (ft)	NS (ft)	EW (ft)	DLS (°/100ft)	Northing (ftUS)	Easting (ftUS)	Latitude (°)	Longitude (°)
	6700.00	23.98	231.29	6097.80	-66.49	1031.68	-2397.89	8.73	1289795.55	3283326.25	40.124439	-104.486804
	6789.00	25.92	220.58	6178.53	-32.30	1005.58	-2424.68	5.51	1289769.14	3283299.77	40.124367	-104.486900
	6879.00	30.76	214.58	6257.74	8.81	971.66	-2450.56	6.24	1289734.93	3283274.29	40.124274	-104.486993
	6968.00	36.29	211.76	6331.90	56.99	930.49	-2477.37	6.45	1289693.46	3283247.95	40.124161	-104.487089
	7057.00	43.63	208.55	6400.08	113.51	881.05	-2505.95	8.56	1289643.69	3283219.94	40.124025	-104.487191
	7147.00	49.40	205.76	6461.99	178.50	822.95	-2535.67	6.79	1289585.25	3283190.90	40.123866	-104.487297
	7237.00	56.48	203.41	6516.20	250.19	757.66	-2565.47	8.13	1289519.63	3283161.86	40.123686	-104.487404
	7326.00	63.79	200.16	6560.50	327.30	686.02	-2594.01	8.80	1289447.67	3283134.15	40.123490	-104.487506
	7415.00	68.59	195.94	6596.43	408.49	608.63	-2619.17	6.92	1289370.00	3283109.88	40.123277	-104.487596
	7505.00	70.91	191.57	6627.59	492.06	526.64	-2639.22	5.23	1289287.79	3283090.78	40.123052	-104.487667
	7594.00	75.67	188.35	6653.18	575.45	442.72	-2653.93	6.37	1289203.70	3283077.03	40.122822	-104.487720
Cross Setback Heel (2182' FSL, 706' FWL)	7672.86	85.36	186.71	6666.16	650.73	365.70	-2664.10	12.46	1289126.58	3283067.75	40.122610	-104.487756
	7684.00	86.73	186.48	6666.92	661.45	354.66	-2665.38	12.46	1289115.52	3283066.60	40.122580	-104.487761
	7773.00	89.02	186.07	6670.22	747.13	266.26	-2675.10	2.61	1289027.02	3283057.90	40.122337	-104.487795
	7863.00	89.71	186.23	6671.22	833.78	176.78	-2684.75	0.79	1288937.45	3283049.28	40.122092	-104.487830
	7992.00	89.04	183.28	6672.62	957.08	48.25	-2695.44	2.35	1288808.80	3283040.07	40.121739	-104.487868
	8082.00	88.98	179.32	6674.17	1041.34	-41.69	-2697.48	4.39	1288718.84	3283039.07	40.121492	-104.487875
	8171.00	88.62	180.11	6676.04	1123.78	-130.67	-2697.05	0.98	1288629.88	3283040.53	40.121248	-104.487874
	8261.00	89.22	179.92	6677.74	1207.33	-220.66	-2697.08	0.70	1288539.91	3283041.54	40.121001	-104.487874
	8350.00	90.05	179.90	6678.31	1289.90	-309.65	-2696.94	0.93	1288450.92	3283042.70	40.120757	-104.487873
	8439.00	90.09	179.24	6678.20	1372.27	-398.65	-2696.28	0.74	1288361.94	3283044.38	40.120512	-104.487871
	8529.00	90.21	179.53	6677.97	1455.46	-488.65	-2695.31	0.35	1288271.97	3283046.38	40.120265	-104.487867
	8618.00	90.40	181.37	6677.49	1538.34	-577.64	-2696.01	2.08	1288182.98	3283046.71	40.120021	-104.487870
	8708.00	89.89	179.65	6677.26	1622.18	-667.63	-2696.81	2.00	1288092.98	3283046.95	40.119774	-104.487873
	8798.00	90.13	178.81	6677.25	1705.27	-757.62	-2695.60	0.97	1288003.02	3283049.20	40.119527	-104.487868
	8887.00	89.99	178.87	6677.16	1787.21	-846.60	-2693.79	0.16	1287914.07	3283052.03	40.119283	-104.487862
	8977.00	90.09	178.30	6677.09	1869.91	-936.57	-2691.57	0.63	1287824.13	3283055.29	40.119036	-104.487854
	9066.00	90.30	180.03	6676.79	1952.04	-1025.56	-2690.28	1.95	1287735.17	3283057.61	40.118791	-104.487849
	9156.00	90.23	178.58	6676.37	2035.18	-1115.55	-2689.19	1.62	1287645.20	3283059.73	40.118544	-104.487845
	9245.00	90.29	181.11	6675.98	2117.70	-1204.54	-2688.95	2.85	1287556.22	3283061.00	40.118300	-104.487844
	9335.00	90.06	179.60	6675.70	2201.46	-1294.54	-2689.51	1.70	1287466.23	3283061.47	40.118053	-104.487846
	9424.00	89.93	178.91	6675.71	2283.65	-1383.53	-2688.35	0.79	1287377.26	3283063.66	40.117809	-104.487842
	9514.00	89.70	177.90	6676.00	2366.24	-1473.49	-2685.85	1.15	1287287.33	3283067.20	40.117562	-104.487833
	9603.00	90.34	178.49	6675.97	2447.78	-1562.45	-2683.05	0.98	1287198.42	3283071.02	40.117318	-104.487823
	9693.00	89.84	179.13	6675.82	2530.62	-1652.43	-2681.18	0.90	1287108.47	3283073.92	40.117071	-104.487816
	9782.00	90.19	178.77	6675.80	2612.62	-1741.41	-2679.55	0.56	1287019.52	3283076.58	40.116826	-104.487811
	9872.00	89.92	178.50	6675.71	2695.35	-1831.39	-2677.41	0.42	1286929.58	3283079.76	40.116579	-104.487803
	9962.00	89.96	178.32	6675.80	2777.94	-1921.35	-2674.91	0.20	1286839.65	3283083.30	40.116332	-104.487794
	10051.00	90.18	179.05	6675.70	2859.78	-2010.33	-2672.86	0.85	1286750.71	3283086.37	40.116088	-104.487787
	10141.00	90.21	178.75	6675.39	2942.68	-2100.31	-2671.13	0.33	1286660.75	3283089.13	40.115841	-104.487780
	10230.00	90.17	178.14	6675.10	3024.37	-2189.28	-2668.72	0.69	1286571.83	3283092.57	40.115597	-104.487772
	10320.00	89.94	178.06	6675.01	3106.77	-2279.23	-2665.74	0.26	1286481.92	3283096.59	40.115350	-104.487761
	10409.00	90.13	177.95	6674.96	3188.19	-2368.17	-2662.64	0.25	1286393.02	3283100.71	40.115106	-104.487750
	10499.00	90.02	178.78	6674.84	3270.75	-2458.14	-2660.07	0.94	1286303.10	3283104.31	40.114859	-104.487741
	10588.00	90.00	178.51	6674.83	3352.57	-2547.11	-2657.97	0.30	1286214.15	3283107.44	40.114615	-104.487733
	10678.00	90.68	180.06	6674.30	3435.70	-2637.10	-2656.85	1.88	1286126.19	3283109.60	40.114368	-104.487729
	10767.00	90.39	182.11	6673.47	3518.93	-2726.07	-2658.54	2.33	1286035.20	3283108.93	40.114123	-104.487735
	10856.00	90.66	181.90	6672.66	3602.66	-2815.02	-2661.66	0.39	1285946.24	3283106.84	40.113879	-104.487746
	10946.00	90.65	182.05	6671.63	3687.30	-2904.96	-2664.76	0.16	1285856.27	3283104.77	40.113632	-104.487757
	11035.00	91.03	181.56	6670.32	3770.92	-2993.90	-2667.56	0.70	1285767.30	3283103.00	40.113388	-104.487767
	11125.00	90.61	182.18	6669.03	3855.51	-3083.85	-2670.49	0.84	1285677.34	3283101.10	40.113141	-104.487778
	11215.00	90.64	182.18	6668.05	3940.27	-3173.77	-2673.91	0.04	1285587.38	3283098.72	40.112894	-104.487790
	11304.00	90.17	181.00	6667.42	4023.77	-3262.74	-2676.39	1.43	1285498.40	3283097.27	40.112650	-104.487799
	11394.00	90.52	181.18	6666.88	4107.94	-3352.72	-2678.10	0.44	1285408.40	3283096.60	40.112403	-104.487805
	11483.00	90.60	179.24	6666.01	4190.68	-3441.71	-2678.43	2.17	1285319.42	3283097.29	40.112159	-104.487806
	11573.00	90.61	181.19	6665.06	4274.35	-3531.70	-2678.77	2.17	1285229.43	3283097.99	40.111912	-104.487807
	11662.00	90.70	177.58	6664.05	4356.60	-3620.67	-2677.82	4.06	1285140.48	3283099.96	40.111668	-104.487804
	11752.00	91.07	179.64	6662.66	4439.30	-3710.63	-2675.63	2.33	1285050.56	3283103.18	40.111421	-104.487796
	11841.00	90.46	177.87	6661.46	4521.17	-3799.60	-2673.70	2.10	1284961.62	3283106.14	40.111177	-104.487789
	11931.00	90.12	178.64	6661.01	4603.67	-3889.55	-2670.96	0.93	1284871.71	3283109.92	40.110930	-104.487779
	12020.00	90.27	179.38	6660.70	4685.70	-3978.54	-2669.42	0.85	1284782.75	3283112.49	40.110685	-104.487773
	12109.00	89.91	178.20	6660.57	4767.61	-4067.52	-2667.54	1.38	1284693.80	3283115.39	40.110441	-104.487767
	12199.00	90.27	180.14	6660.43	4850.66	-4157.50	-2666.24	2.19	1284603.84	3283117.73	40.110194	-104.487762
	12288.00	90.01	180.14	6660.22	4933.37	-4246.50	-2666.45	0.29	1284514.85	3283118.54	40.109950	-104.487763
	12378.00	90.25	179.08	6660.02	5016.69	-4336.50	-2665.84	1.21	1284424.87	3283120.19	40.109703	-104.487761
	12467.00	89.86	179.64	6659.93	5098.93	-4425.49	-2664.84	0.77	1284335.90	3283122.21	40.109458	-104.487757
	12557.00	90.01	180.88	6660.03	5182.64	-4515.49	-2665.25	1.39	1284245.91	3283122.84	40.109211	-104.487758
	12646.00	90.02	180.24	6660.01	5265.58	-4604.49	-2666.12	0.72	1284156.91	3283123.00	40.108967	-104.487761
	12736.00	89.83	179.15	6660.13	5348.95	-4694.48	-2665.64	1.22	1284066.93	3283124.51	40.108720	-104.487760
	12825.00	89.84	180.27	6660.38	5431.40	-4783.48	-2665.19	1.25	1283977.95	3283125.99	40.108476	-104.487758
	12914.00	90.07	179.42	6660.45	5513.93	-4872.48	-2664.94	0.99	1283888.96	3283127.26	40.108231	-104.487757
	13004.00	90.33	179.75	6660.14	5597.24	-4962.48	-2664.29	0.47	1283798.98	3283128.95	40.107984	-104.487755
	13093.00	90.03	178.08	6659.87	5679.22	-5051.46	-2662.61	1.91	1283710.03	3283131.66	40.107740	-104.487749
	13183.00	90.03	178.58	6659.82	5761.76	-5141.42	-2659.99	0.56	1283620.11	3283135.32	40.107493	-104.487739
	13273.00	89.73	179.35	6660.01	5844.70	-5231.40	-2658.36	0.91	1283530.15	3283137.98	40.107246	-104.487733
	13362.00	90.27	179.70	6660.01	5927.04	-5320.40	-2657.62	0.71	1283441.17	3283139.74	40.107002	-104.487731
	13452.00	89.97	181.50	6659.82	6010.93	-5410.39	-2658.56	2.03	1283351.18	3283139.84	40.106755	-104.487734
	13541.00	90.21										

Comments	MD (ft)	Incl (°)	Azim True (°)	TVD (ft)	VSEC (ft)	NS (ft)	EW (ft)	DLS (°/100ft)	Northing (ftUS)	Easting (ftUS)	Latitude (°)	Longitude (°)
Survey Program:												
Description	Part	MD From (ft)	MD To (ft)	EOU Freq (ft)	Hole Size	Casing Diameter (in)	Survey Tool Type	Borehole / Survey				
	1	0.000	21.000	1/98.425	13.500	9.625	NAL_MWD_PLUS_0.5_DEG- Depth Only	Original Hole / KBL 1930 08H MWD 0' to 14775' Definitive				
	1	21.000	21.000	Act Stns	13.500	9.625	NAL_MWD_PLUS_0.5_DEG- Depth Only	Original Hole / KBL 1930 08H MWD 0' to 14775' Definitive				
	1	21.000	1778.000	Act Stns	13.500	9.625	NAL_MWD_PLUS_0.5_DEG	Original Hole / KBL 1930 08H MWD 0' to 14775' Definitive				
	1	1778.000	14775.000	Act Stns	8.500	5.500	NAL_MWD_PLUS_0.5_DEG	Original Hole / KBL 1930 08H MWD 0' to 14775' Definitive				