



# Verdad Resources LLC

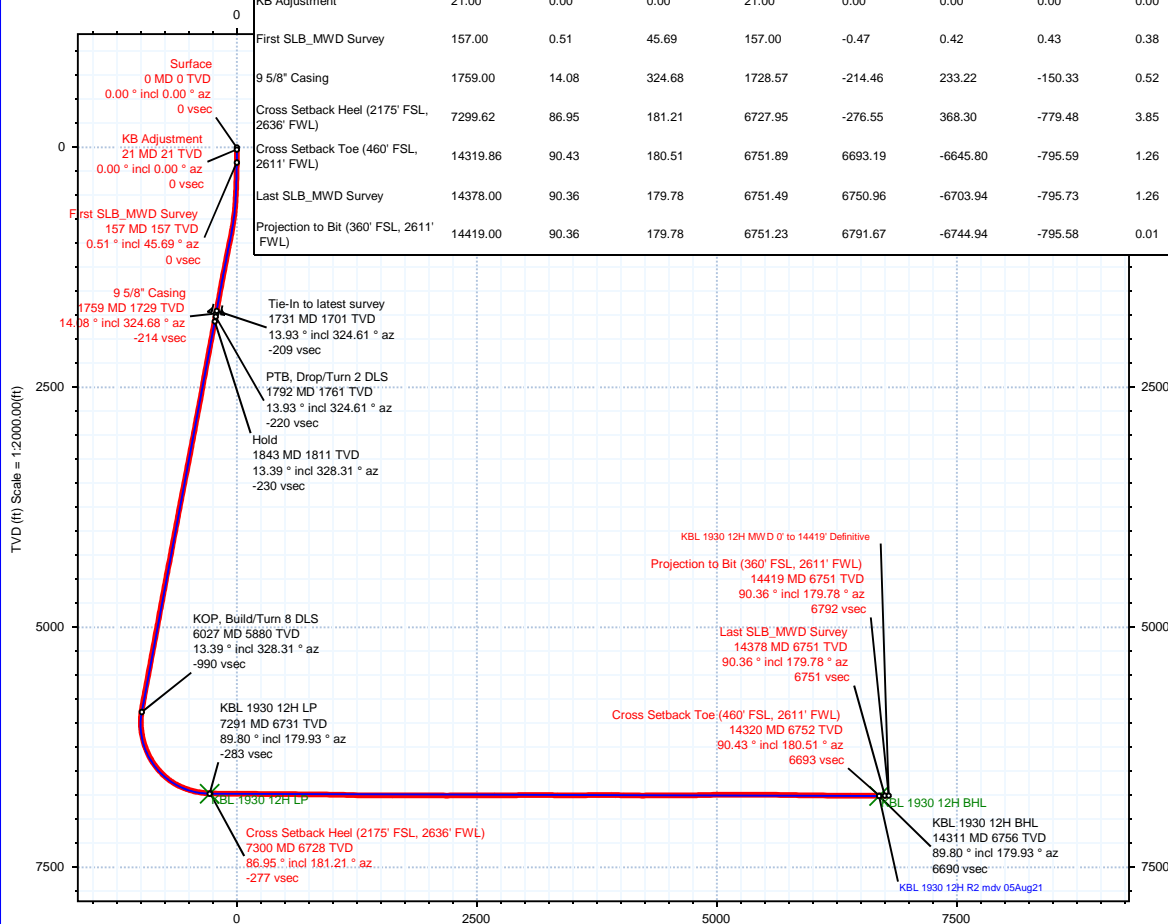


<b>Borehole:</b>  Original Hole	<b>Well:</b>  KBL 1930 12H	<b>Field:</b>  CO, Weld County (NAD 83 NZ) - 2019	<b>Structure:</b>  Verdad Resources 19-02N-63W (KBL 1930 Pad)
---------------------------------------	----------------------------------	---	---

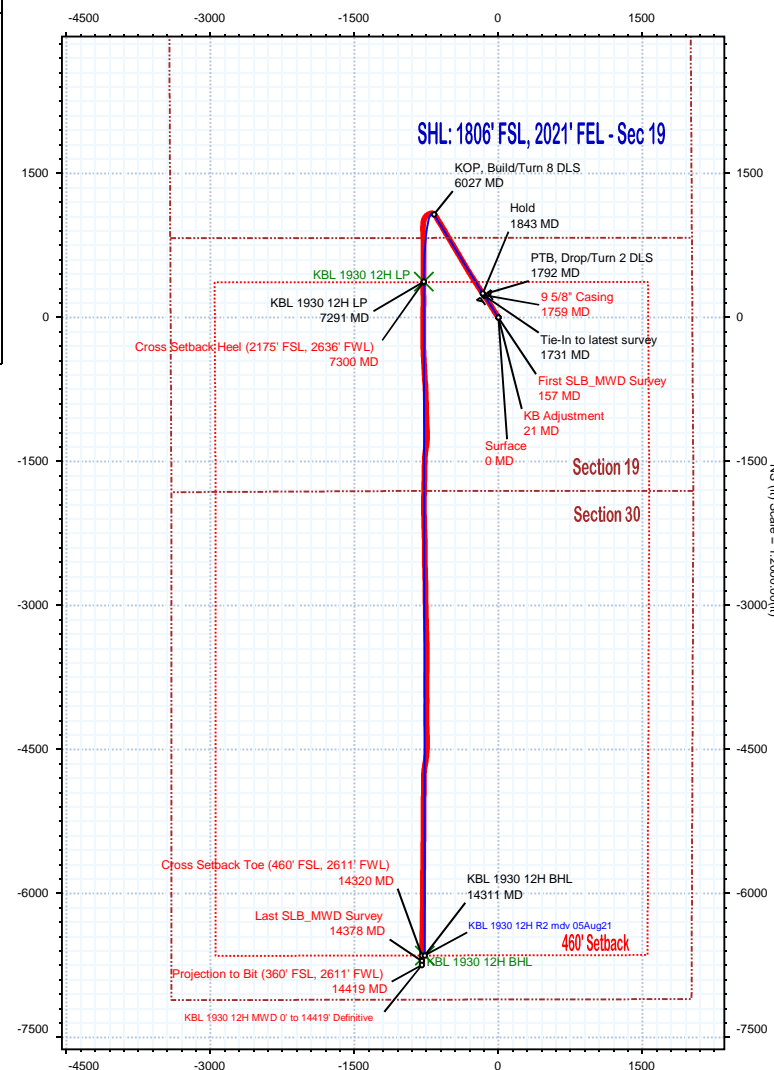
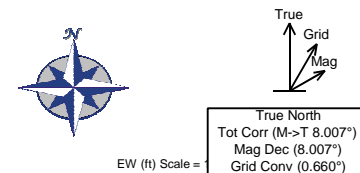
<b>Gravity &amp; Magnetic Parameters</b> Model: HDGM 2021 Dip: 66.471° Date: 08-Aug-2021 MagDec: 8.007° FS: 51852.083nT Gravity FS: 999.019mgn (9.80665 Based)	<b>Surface Location</b> NAD83 Colorado State Plane, Northern Zone, US Feet Lat: N 40 7 17.78 Northing: 1288791.77ftUS Grid Conv: 0.6603° Lon: W 104 28 41.05 Easting: 3285780.8ftUS Scale Fact: 0.99995937	<b>Miscellaneous</b> Slot: KBL 1930 12H TVD Ref: KB 21ft(4881ft above MSL) Plan: KBL 1930 12H MWD 0' to 14419' Definitive
--	---	---

Target Description		Surface Location							
		Grid Coord							
Target Name	Latitude	Longitude	Northing	Easting	TVD	VSec	N(+)/S(-)	E(+)/W(-)	Local Coord
KBL 1930 Pad Sec 19-30 460' SB	N 40 7 17.79	W 104 28 41.82	1288791.80	3285720.67	4881.00	6.17	0.73	-60.13	
KBL 1930 Pad Sec 19-30	N 40 7 17.79	W 104 28 41.82	1288791.80	3285720.67	4881.00	6.17	0.73	-60.13	
KBL 1930 Pad Sec 19 - Mid line	N 40 7 17.79	W 104 28 41.82	1288791.80	3285720.67	4881.00	6.17	0.73	-60.13	
KBL 1930 12H LP	N 40 7 21.48	W 104 28 51.03	1289156.94	3285001.35	6731.00	-282.85	374.14	-775.22	
KBL 1930 12H BHL	N 40 6 12.11	W 104 28 50.91	1282137.86	3285091.26	6756.00	6689.83	-6645.81	-766.21	

Critical Points								
Critical Point	MD	INCL	AZIM	TVD	VSEC	N(+)/S(-)	E(+)/W(-)	DLS
Surface	0.00	0.00	0.00	0.00	0.00	0.00	0.00	
KB Adjustment	21.00	0.00	0.00	21.00	0.00	0.00	0.00	0.00
First SLB_MWD Survey	157.00	0.51	45.69	157.00	-0.47	0.42	0.43	0.38
9 5/8" Casing	1759.00	14.08	324.68	1728.57	-214.46	233.22	-150.33	0.52
Cross Setback Heel (2175' FSL, 2636' FWL)	7299.62	86.95	181.21	6727.95	-276.55	368.30	-779.48	3.85
Cross Setback Toe (460' FSL, 2611' FWL)	14319.86	90.43	180.51	6751.89	6693.19	-6645.80	-795.59	1.26
Last SLB_MWD Survey	14378.00	90.36	179.78	6751.49	6750.96	-6703.94	-795.73	1.26
Projection to Bit (360' FSL, 2611' FWL)	14419.00	90.36	179.78	6751.23	6791.67	-6744.94	-795.58	0.01



Vertical Section (ft) Azim = 186.58° Scale = 1:2000.00(ft) Origin = 0N/-S, 0E/-W



## KBL 1930 12H MWD 0' to 14419' Definitive Survey Geodetic Report

(Def Survey)

**Report Date:** August 16, 2021 - 03:18 PM  
**Client:** Verdad Resources LLC  
**Field:** CO, Weld County (NAD 83 NZ) - 2019  
**Structure / Slot:** Verdad Resources 19-02N-63W (KBL 1930 Pad) / KBL 1930 12H  
**Well:** KBL 1930 12H  
**Borehole:** Original Hole  
**UWI / API#:** Unknown / 05-123-50886  
**Survey Name:** KBL 1930 12H MWD 0' to 14419' Definitive  
**Survey Date:** August 08, 2021  
**Tort / AHD / DDI / ERD Ratio:** 303.985 ° / 9178.353 ft / 6.775 / 1.359  
**Coordinate Reference System:** NAD83 Colorado State Plane, Northern Zone, US Feet  
**Location Lat / Long:** N 40° 7' 17.78160", W 104° 28' 41.04840"  
**Location Grid N/E Y/X:** N 1288791.768 ftUS, E 3285780.800 ftUS  
**CRS Grid Convergence Angle:** 0.6603 °  
**Grid Scale Factor:** 0.99995937  
**Version / Patch:** 2.10.824.0

**Survey / DLS Computation:** Minimum Curvature / Lubinski  
**Vertical Section Azimuth:** 186.580 ° (True North)  
**Vertical Section Origin:** 0.000 ft, 0.000 ft  
**TVD Reference Datum:** KB 21ft  
**TVD Reference Elevation:** 4881.000 ft above MSL  
**Seabed / Ground Elevation:** 4860.000 ft above MSL  
**Magnetic Declination:** 8.007 °  
**Total Gravity Field Strength:** 999.0189mgn (9.80665 Based)  
**Gravity Model:** GARM  
**Total Magnetic Field Strength:** 51852.083 nT  
**Magnetic Dip Angle:** 66.471 °  
**Declination Date:** August 08, 2021  
**Magnetic Declination Model:** HDGM 2021  
**North Reference:** True North  
**Grid Convergence Used:** 0.0000 °  
**Total Corr Mag North→True North:** 8.0069 °  
**Local Coord Referenced To:** Well Head

Comments	MD (ft)	Incl (°)	Azim True (°)	TVD (ft)	VSEC (ft)	NS (ft)	EW (ft)	DLS (°/100ft)	Northing (ftUS)	Easting (ftUS)	Latitude (°)	Longitude (°)
Surface	0.00	0.00	0.00	0.00	0.00	0.00	0.00	N/A	1288791.77	3285780.80	40.121606	-104.478069
KB Adjustment	21.00	0.00	0.00	21.00	0.00	0.00	0.00	0.00	1288791.77	3285780.80	40.121606	-104.478069
First SLB_MWD Survey	157.00	0.51	45.69	157.00	-0.47	0.42	0.43	0.38	1288792.20	3285781.23	40.121607	-104.478067
9 5/8" Casing	217.00	0.80	15.07	216.99	-1.09	1.01	0.73	0.74	1288792.79	3285781.52	40.121609	-104.478066
	299.00	1.48	353.74	298.98	-2.69	2.62	0.77	0.96	1288794.40	3285781.54	40.121613	-104.478066
	388.00	2.37	332.98	387.93	-5.34	5.40	-0.19	1.25	1288797.17	3285780.54	40.121621	-104.478070
	478.00	3.79	317.27	477.80	-8.83	9.24	-3.06	1.82	1288800.98	3285777.63	40.121631	-104.478080
	568.00	5.80	314.96	567.48	-13.60	14.64	-8.30	2.24	1288806.31	3285772.34	40.121646	-104.478099
	658.00	7.63	325.46	656.86	-20.92	22.78	-14.90	2.44	1288814.37	3285765.64	40.121669	-104.478122
	748.00	9.85	326.76	745.81	-31.34	34.14	-22.51	2.48	1288825.65	3285757.90	40.121700	-104.478149
	838.00	12.35	326.71	834.12	-44.64	48.63	-32.01	2.78	1288840.02	3285748.23	40.121739	-104.478183
	928.00	14.44	328.77	921.67	-60.89	66.27	-43.12	2.38	1288857.53	3285736.92	40.121788	-104.478223
	1018.00	15.22	328.29	1008.67	-79.03	85.92	-55.14	0.88	1288877.04	3285724.67	40.121842	-104.478266
	1108.00	13.51	328.30	1095.85	-96.56	104.91	-66.88	1.90	1288895.90	3285712.72	40.121894	-104.478308
	1198.00	13.81	328.05	1183.30	-113.21	122.97	-78.09	0.34	1288913.82	3285701.30	40.121944	-104.478348
	1288.00	14.34	327.40	1270.60	-130.25	141.47	-89.78	0.61	1288932.19	3285689.40	40.121994	-104.478390
	1378.00	13.21	328.66	1358.01	-147.01	159.65	-101.13	1.30	1288950.23	3285677.84	40.122044	-104.478431
	1468.00	13.41	329.13	1445.59	-163.40	177.39	-111.83	0.25	1288967.85	3285666.93	40.122093	-104.478469
	1558.00	13.07	325.57	1533.20	-179.37	194.74	-122.94	0.98	1288985.07	3285655.63	40.122141	-104.478509
	1648.00	13.57	324.00	1620.78	-194.82	211.68	-134.90	0.69	1289001.87	3285643.47	40.122187	-104.478551
	1731.00	13.93	324.61	1701.40	-209.42	227.70	-146.41	0.47	1289017.75	3285631.78	40.122231	-104.478593
	1759.00	14.08	324.68	1728.57	-214.46	233.22	-150.33	0.52	1289023.23	3285627.80	40.122246	-104.478607
	1875.00	14.68	324.98	1840.94	-235.95	256.77	-166.92	0.52	1289046.59	3285610.94	40.122311	-104.478666
	1965.00	13.27	327.64	1928.27	-252.51	274.83	-178.99	1.72	1289064.51	3285598.66	40.122360	-104.478709
	2054.00	13.74	327.72	2014.81	-268.69	292.40	-190.10	0.53	1289081.94	3285587.35	40.122409	-104.478749
	2144.00	13.38	325.41	2102.30	-284.85	310.01	-201.72	0.72	1289099.42	3285575.53	40.122457	-104.478790
	2233.00	13.53	327.74	2188.86	-300.71	327.29	-213.13	0.63	1289116.57	3285563.92	40.122504	-104.478831
	2323.00	13.70	327.58	2276.33	-317.19	345.19	-224.46	0.19	1289134.33	3285552.39	40.122554	-104.478872
	2412.00	13.67	328.41	2362.81	-333.65	363.04	-235.62	0.22	1289152.05	3285541.03	40.122603	-104.478912
	2502.00	12.53	326.09	2450.47	-349.43	380.20	-246.63	1.39	1289169.09	3285529.81	40.122650	-104.478951
	2591.00	12.87	325.79	2537.29	-364.28	396.41	-257.59	0.38	1289185.17	3285518.67	40.122694	-104.478990
	2680.00	13.67	329.04	2623.91	-380.12	413.62	-268.57	1.23	1289202.25	3285507.49	40.122741	-104.479029
	2770.00	13.42	327.57	2711.41	-396.67	431.56	-279.64	0.47	1289220.06	3285496.21	40.122791	-104.479069
	2859.00	13.77	327.35	2797.91	-412.91	449.20	-290.90	0.40	1289237.57	3285484.76	40.122839	-104.479109
	2948.00	13.32	327.65	2884.44	-429.09	466.78	-302.10	0.52	1289255.01	3285473.36	40.122887	-104.479149
	3038.00	13.63	330.07	2971.96	-445.67	484.72	-312.94	0.72	1289272.83	3285462.31	40.122937	-104.479188
	3127.00	13.48	327.30	3058.48	-462.13	502.54	-323.77	0.75	1289290.53	3285451.27	40.122985	-104.479227
	3216.00	13.27	330.67	3145.07	-478.43	520.18	-334.38	0.91	1289308.04	3285440.46	40.123034	-104.479265
	3306.00	13.44	329.94	3232.64	-495.19	538.24	-344.68	0.27	1289325.97	3285429.95	40.123083	-104.479302
	3395.00	13.49	329.13	3319.19	-511.74	556.10	-355.19	0.22	1289343.72	3285419.24	40.123133	-104.479339
	3485.00	13.68	329.55	3406.67	-528.57	574.29	-365.97	0.24	1289361.78	3285408.25	40.123182	-104.479378
	3575.00	13.78	329.78	3494.10	-545.65	592.73	-376.76	0.13	1289380.09	3285397.25	40.123233	-104.479416
	3664.00	13.83	328.82	3580.53	-562.55	610.99	-387.61	0.26	1289398.23	3285386.19	40.123283	-104.479455
	3753.00	13.06	331.72	3667.09	-579.21	628.95	-397.88	1.14	1289416.06	3285375.72	40.123332	-104.479492
	3843.00	13.61	329.41	3754.66	-596.00	647.02	-408.08	0.85	1289434.01	3285365.30	40.123382	-104.479528
	3933.00	13.57	327.35	3842.14	-612.61	665.03	-419.17	0.54	1289451.89	3285354.01	40.123432	-104.479568
	4022.00	13.27	328.75	3928.71	-628.77	682.55	-430.11	0.50	1289469.29	3285342.88	40.123480	-104.479607
	4112.00	13.50	330.15	4016.27	-645.38	700.49	-440.69	0.44	1289487.10	3285332.08	40.123529	-104.479645
	4201.00	13.52	328.88	4102.81	-661.96	718.40	-451.24	0.33	1289504.89	3285321.33	40.123578	-104.479683
	4291.00	13.12	327.30	4190.39	-678.19	736.00	-462.19	0.60	1289522.36	3285310.18	40.123626	-104.479722
	4380.00	13.60	330.28	4276.98	-694.45	753.59	-472.84	0.95	1289539.83	3285299.33	40.123675	-104.479760
	4470.00	13.91	329.56	4364.40	-711.61	772.11	-483.56	0.39	1289558.22	3285288.39	40.123725	-104.479798
	4559.00	13.15	329.68	4450.93	-728.24	790.06	-494.09	0.85	1289576.05	3285277.66	40.123775	-104.479836
4649.00	13.75	327.55	4538.46	-744.73	807.92	-505.00	0.87	1289593.79	3285266.54	40.123824	-104.479875	
4738.00	12.53	330.16	4625.13	-760.72	825.23	-515.48	1.52	1289610.97	3285255.86	40.123871	-104.479912	
4828.00	13.55	329.21	4712.81	-776.96	842.76	-525.74	1.15	1289628.37	3285245.41	40.123919	-104.479949	
4917.00	13.58	329.43	4799.32	-793.57	860.71	-536.39	0.07	1289646.20	3285234.55	40.123969	-104.479987	
5007.00	11.83	331.33	4887.12	-809.53	877.90	-546.19	1.99	1289663.28	3285224.55	40.124016	-104.480022	
5097.00	13.20	329.64	4974.98	-825.28	894.87	-555.81	1.57	1289680.13	3285214.74	40.124062	-104.480056	
5186.00	13.52	328.30	5061.57	-841.57	912.49	-566.41	0.50	1289697.63	3285203.93	40.124111	-104.480094	
5275.00	13.28	329.16	5148.14	-857.86	930.12	-577.12	0.35	1289715.14	3285193.02	40.124159	-104.480133	
5365.00	13.45	329.08	5235.70	-874.38	947.98	-587.80	0.19	1289732.87	3285182.14	40.124208	-104.480171	
5454.00	12.97	329.36	5322.35	-890.55	965.46	-598.21	0.54	1289750.23	3285171.52	40.124256	-104.480208	
5544.00	13.41	327.98	5409.97	-906.75	983.00	-608.90	0.60	1289767.65	3285160.64	40.124304	-104.480246	
5633.00	13.51	328.44	5496.53	-922.99	1000.61	-619.81	0.16	1289785.13	3285149.52	40.124353	-104.480285	
5722.00	13.32	329.01	5583.10	-939.29	1018.25	-630.53	0.26	1289802.64	3285138.60	40.124401	-104.480324	
5812.00	13.50	328.98	5670.65	-955.83	1036.14	-641.28	0.20	1289820.41	3285127.65	40.124450	-104.480362	
5901.00	12.98	327.68	5757.28	-971.84	1053.49	-651.98	0.67	1289837.63	3285116.75	40.124498	-104.480400	
5990.00	13.01	325.40	5844.00	-987.16	1070.18	-663.02	0.58	1289854.19	3285105.52	40.124544	-104.480440	
6080.00	11.33	298.88	5932.05	-998.14	1082.80	-676.52	6.42	1289866.65	3285091.88	40.124578	-104.480488	
6169.00	14.32	262.44	6018.95	-998.77	1085.58	-695.12	9.50	1289869.22	3285073.25	40.124586	-104.480555	
6259.00	18.14	247.98	6105.38	-989.34	1078.85	-719.16	6.15	1289862.22	3285049.28	40.124567	-104.480641	
6348.00	21.87	231.61	6189.06	-970.97	1063.35	-745.03	7.52	1289846.41	3285023.60	40.124525	-104.480733	
6438.00	22.99	208.63	6272.41	-942.78	1037.46	-766.63	9.77	1289820.28	3285002.29	40.124454	-104.480810	
6527.00	28.25	191.21	6352.75	-905.60	1001.47	-779.08	10.26	1289784.15	3284990.26	40.124355	-104.480855	
6617.00	35.98	182.36	6428.97	-857.91	954.07	-784.32	8.03	1289736.69	3284985.57	40.124225	-104.480874	

Comments	MD (ft)	Incl (°)	Azim True (°)	TVD (ft)	VSEC (ft)	NS (ft)	EW (ft)	DLS (°/100ft)	Northing (ftUS)	Easting (ftUS)	Latitude (°)	Longitude (°)
Cross Setback Heel (2175' FSL, 2636' FWL)	6795.00	49.48	177.68	6559.67	-738.87	833.92	-781.50	7.84	1289616.59	3284989.78	40.123895	-104.480863
	6885.00	57.21	179.31	6613.37	-667.44	761.80	-779.65	8.70	1289544.50	3284992.46	40.123697	-104.480857
	6974.00	65.80	179.72	6655.79	-589.89	683.66	-779.00	9.66	1289466.38	3284994.01	40.123483	-104.480855
	7064.00	71.79	179.58	6688.33	-506.63	599.79	-778.49	6.66	1289382.52	3284995.48	40.123252	-104.480853
	7153.00	78.65	179.97	6711.02	-421.24	513.79	-778.16	7.71	1289296.53	3284996.80	40.123016	-104.480852
	7242.00	84.82	180.57	6723.81	-333.74	425.76	-778.58	6.97	1289208.51	3284997.40	40.122775	-104.480853
	7299.62	86.95	181.21	6727.95	-276.55	368.30	-779.48	3.85	1289151.04	3284997.16	40.122617	-104.480856
	7332.00	88.14	181.57	6729.34	-244.33	335.96	-780.26	3.85	1289118.70	3284996.75	40.122528	-104.480859
	7422.00	89.42	179.26	6731.25	-154.88	245.99	-780.92	2.94	1289028.73	3284997.13	40.122281	-104.480861
	7511.00	89.71	180.12	6731.92	-66.53	156.99	-780.44	1.02	1288939.75	3284998.64	40.122037	-104.480860
	7600.00	89.76	180.65	6732.33	21.95	68.00	-781.04	0.60	1288850.76	3284999.06	40.121793	-104.480862
	7690.00	89.88	180.13	6732.61	111.43	-22.00	-781.66	0.60	1288760.76	3284999.48	40.121546	-104.480864
	7779.00	89.15	179.33	6733.36	199.79	-111.00	-781.24	1.22	1288671.78	3285000.92	40.121301	-104.480862
7869.00	89.41	180.05	6734.50	289.13	-200.99	-780.75	0.84	1288581.81	3285002.45	40.121054	-104.480861	
7958.00	90.06	180.39	6734.91	377.58	-289.98	-781.09	0.83	1288492.81	3285003.14	40.120810	-104.480862	
8048.00	88.65	177.14	6735.92	466.72	-379.94	-779.15	3.94	1288402.89	3285006.12	40.120563	-104.480855	
8138.00	90.33	176.57	6736.72	555.42	-469.80	-774.21	1.96	1288313.10	3285012.09	40.120316	-104.480837	
8227.00	89.29	177.13	6737.03	643.14	-558.66	-769.32	1.33	1288224.30	3285018.00	40.120072	-104.480820	
8316.00	89.44	176.24	6738.02	730.81	-647.51	-764.18	1.02	1288135.52	3285024.17	40.119829	-104.480801	
8406.00	89.30	176.86	6739.01	819.43	-737.34	-758.76	0.71	1288045.77	3285030.62	40.119582	-104.480782	
8495.00	89.49	178.46	6739.95	907.34	-826.26	-755.13	1.81	1287956.90	3285035.28	40.119338	-104.480769	
8585.00	89.35	179.50	6740.86	996.55	-916.24	-753.52	1.17	1287866.95	3285037.92	40.119091	-104.480763	
8675.00	88.54	177.66	6742.52	1085.65	-1006.19	-751.30	2.23	1287777.03	3285041.18	40.118844	-104.480755	
8764.00	88.04	177.33	6745.17	1173.50	-1095.06	-747.41	0.67	1287688.21	3285046.09	40.118600	-104.480741	
8854.00	88.13	177.56	6748.17	1262.31	-1184.93	-743.41	0.27	1287598.41	3285051.13	40.118353	-104.480727	
8943.00	90.15	183.06	6749.51	1350.73	-1273.88	-743.89	6.58	1287509.46	3285051.67	40.118109	-104.480729	
9033.00	89.92	190.31	6749.45	1440.67	-1363.20	-754.36	8.06	1287420.02	3285042.24	40.117864	-104.480766	
9122.00	90.73	182.73	6748.95	1529.60	-1451.56	-764.46	8.56	1287331.56	3285033.15	40.117621	-104.480802	
9212.00	89.68	181.04	6748.62	1619.29	-1541.51	-767.42	2.22	1287241.59	3285031.23	40.117374	-104.480813	
9301.00	89.39	181.13	6749.35	1707.88	-1630.49	-769.11	0.34	1287152.59	3285030.57	40.117130	-104.480819	
9391.00	89.91	182.01	6749.89	1797.53	-1720.45	-771.57	1.13	1287062.61	3285029.14	40.116883	-104.480828	
9480.00	90.71	180.60	6749.41	1886.15	-1809.42	-773.60	1.81	1286973.63	3285028.13	40.116639	-104.480835	
9570.00	90.36	181.79	6748.57	1975.75	-1899.40	-775.48	1.37	1286883.64	3285027.29	40.116392	-104.480842	
9659.00	89.27	178.64	6748.86	2064.19	-1988.39	-775.82	3.75	1286794.66	3285027.98	40.116148	-104.480843	
9749.00	89.21	179.02	6750.05	2153.36	-2078.36	-773.98	0.42	1286704.72	3285030.86	40.115901	-104.480836	
9839.00	90.90	178.18	6749.96	2242.48	-2168.33	-771.78	2.10	1286614.78	3285034.10	40.115654	-104.480828	
9928.00	89.55	177.75	6749.61	2330.48	-2257.27	-768.62	1.59	1286525.89	3285038.28	40.115410	-104.480817	
10018.00	90.30	178.70	6749.72	2419.52	-2347.22	-765.84	1.34	1286435.97	3285042.10	40.115163	-104.480807	
10107.00	91.04	180.50	6748.68	2507.85	-2436.21	-765.22	2.19	1286347.00	3285043.74	40.114918	-104.480805	
10197.00	89.21	179.94	6748.48	2597.29	-2526.21	-765.57	2.14	1286257.02	3285044.43	40.114671	-104.480806	
10286.00	89.23	177.45	6749.70	2685.44	-2615.17	-763.54	2.79	1286168.09	3285047.48	40.114427	-104.480799	
10376.00	90.76	179.39	6749.71	2774.52	-2705.13	-761.06	2.75	1286078.17	3285051.00	40.114180	-104.480790	
10465.00	91.17	177.71	6748.21	2862.63	-2794.08	-758.81	1.94	1285989.25	3285054.27	40.113936	-104.480782	
10555.00	91.15	181.39	6746.39	2951.92	-2884.05	-758.10	4.09	1285899.30	3285056.02	40.113689	-104.480779	
10644.00	89.94	178.17	6745.54	3040.28	-2973.03	-757.76	3.86	1285810.33	3285057.39	40.113445	-104.480778	
10733.00	90.14	179.16	6745.48	3128.43	-3062.00	-755.68	1.13	1285721.39	3285060.49	40.113201	-104.480771	
10823.00	90.43	178.52	6745.03	3217.60	-3151.98	-753.86	0.78	1285631.44	3285063.34	40.112954	-104.480764	
10913.00	87.00	178.42	6747.05	3306.67	-3241.91	-751.46	3.81	1285541.55	3285066.78	40.112707	-104.480756	
11002.00	90.88	178.26	6748.70	3394.72	-3330.84	-748.88	4.36	1285452.66	3285070.38	40.112463	-104.480746	
11091.00	90.79	178.62	6747.40	3482.81	-3419.80	-746.46	0.41	1285363.74	3285073.83	40.112218	-104.480738	
11181.00	89.55	179.66	6747.14	3572.05	-3509.79	-745.11	1.81	1285273.78	3285076.22	40.111971	-104.480733	
11270.00	90.85	180.84	6746.82	3660.50	-3598.78	-745.50	1.98	1285184.79	3285076.85	40.111727	-104.480734	
11360.00	91.00	181.53	6745.37	3750.09	-3688.75	-747.36	0.78	1285094.81	3285076.03	40.111480	-104.480741	
11449.00	88.33	180.45	6745.88	3838.66	-3777.73	-748.89	3.24	1285005.82	3285075.53	40.111236	-104.480746	
11539.00	90.83	179.89	6746.54	3928.09	-3867.72	-749.15	2.84	1284915.84	3285076.30	40.110989	-104.480747	
11628.00	86.93	178.21	6748.27	4016.28	-3956.67	-747.67	4.77	1284826.92	3285078.81	40.110745	-104.480742	
11718.00	90.71	182.16	6750.13	4105.67	-4046.61	-747.97	6.08	1284736.98	3285079.55	40.110498	-104.480743	
11807.00	89.14	179.54	6750.24	4194.21	-4135.59	-749.29	3.44	1284647.99	3285079.25	40.110254	-104.480748	
11897.00	91.61	179.09	6749.65	4283.48	-4225.58	-748.21	2.79	1284558.03	3285081.37	40.110007	-104.480744	
11986.00	90.66	177.02	6747.89	4371.48	-4314.50	-745.19	2.56	1284469.15	3285085.41	40.109763	-104.480733	
12075.00	89.37	178.24	6747.87	4459.39	-4403.42	-741.52	1.99	1284380.28	3285090.11	40.109518	-104.480720	
12165.00	89.40	183.66	6748.83	4548.92	-4493.37	-743.01	6.02	1284290.32	3285089.65	40.109272	-104.480725	
12254.00	90.33	187.32	6749.04	4637.88	-4581.95	-751.52	4.24	1284201.66	3285082.16	40.109028	-104.480756	
12344.00	90.74	190.52	6748.20	4727.79	-4670.84	-765.47	3.58	1284112.61	3285069.24	40.108784	-104.480806	
12434.00	91.41	181.67	6746.51	4817.68	-4760.23	-775.02	9.86	1284023.13	3285060.72	40.108539	-104.480840	
12523.00	91.30	179.86	6744.40	4906.20	-4849.19	-776.21	2.04	1283934.16	3285060.55	40.108295	-104.480844	
12612.00	91.00	180.68	6742.62	4994.64	-4938.17	-776.63	0.98	1283845.18	3285061.16	40.108051	-104.480845	
12702.00	90.22	181.14	6741.67	5084.19	-5028.16	-778.07	1.00	1283755.19	3285060.76			

Comments	MD (ft)	Incl (°)	Azim True (°)	TVD (ft)	VSEC (ft)	NS (ft)	EW (ft)	DLS (°/100ft)	Northing (ftUS)	Easting (ftUS)	Latitude (°)	Longitude (°)
		1	0.000	21.000	1/98.425	13.500	9.625	NAL_MWD_PLUS_0.5_DEG- Depth Only		Original Hole / KBL 1930 12H MWD 0' to 14419' Definitive		
		1	21.000	21.000	Act Stns	13.500	9.625	NAL_MWD_PLUS_0.5_DEG- Depth Only		Original Hole / KBL 1930 12H MWD 0' to 14419' Definitive		
		1	21.000	1731.000	Act Stns	13.500	9.625	NAL_MWD_PLUS_0.5_DEG		Original Hole / KBL 1930 12H MWD 0' to 14419' Definitive		
		1	1731.000	14419.000	Act Stns	8.500	5.500	NAL_MWD_PLUS_0.5_DEG		Original Hole / KBL 1930 12H MWD 0' to 14419' Definitive		