



Verdad Resources LLC



Borehole: Original Hole	Well: KBL 1930 11H	Field: CO, Weld County (NAD 83 NZ) - 2019	Structure: Verdad Resources 19-02N-63W (KBL 1930 Pad)
---------------------------------------	----------------------------------	---	---

Gravity & Magnetic Parameters Model: HDGM 2021 Dip: 66.472° Date: 03-Aug-2021 MagDec: 8.008° FS: 51853.444Nt Gravity FS: 999.019mgn (9.80665 Based)	Surface Location NAD83 Colorado State Plane, Northern Zone, US Feet Lat: N 40 7 17.78 Northing: 1288791.59ftUS Grid Conv: 0.6603° Lon: W 104 28 41.24 Easting: 3285765.7ftUS Scale Fact: 0.99995937	Miscellaneous Slot: KBL 1930 11H TVD Ref: KB 21ft(4881ft above MSL) Plan: KBL 1930 11H MWD 0' to 14431' Definitive
--	--	--

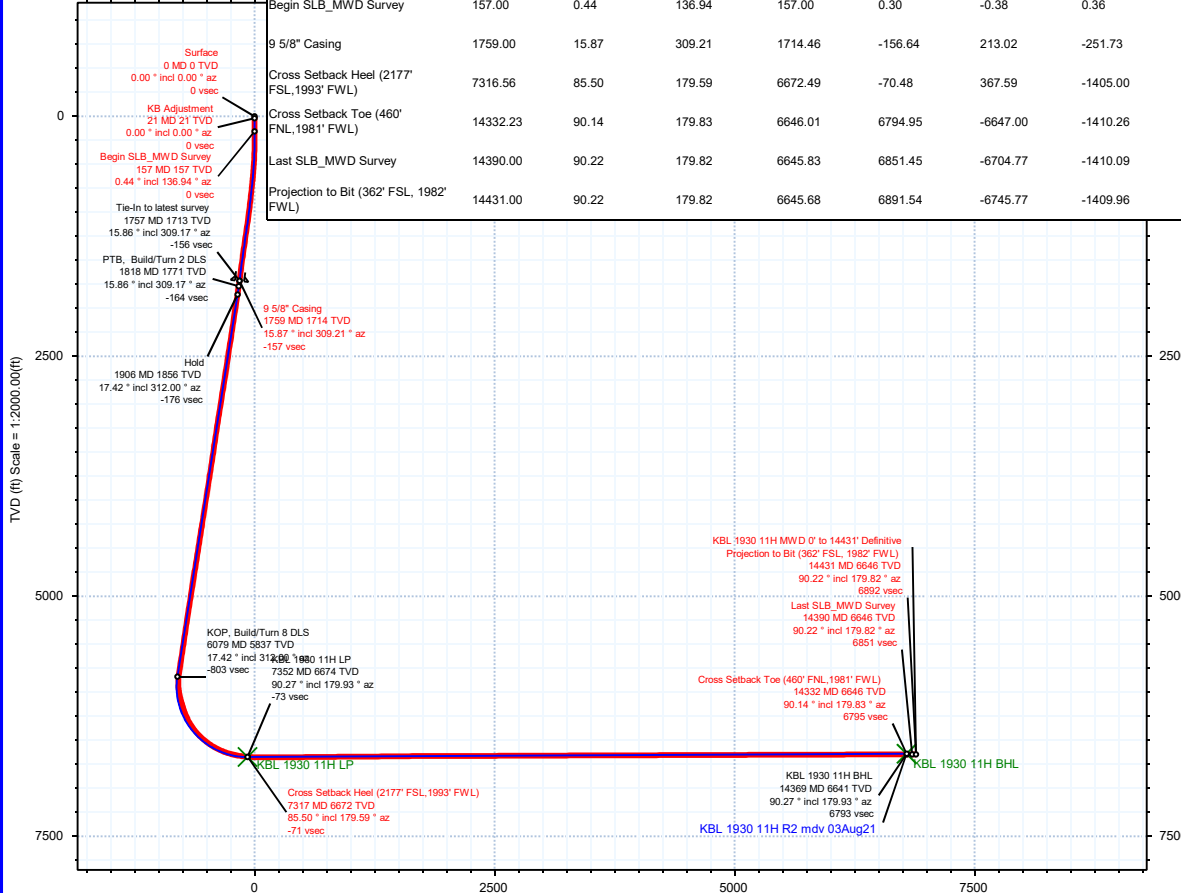
Northing: 1288791.59407925 Easting: 3285765.69919044 Latitude: N 40 7 17.78 Longitude: W 104 28 41.24 VSec Azimuth: 191.88		Surface Location	
Target Description	Grid Coord	Latitude	Longitude
KBL 1930 Pad Sec 19-30 460' SB	N 40 7 17.79 W 104 28 41.82 1288791.80 3285720.67 4881.00 8.56	KBL 1930 Pad Sec 19-30	N 40 7 17.79 W 104 28 41.82 1288791.80 3285720.67 4881.00 8.56
Heel Cross	N 40 7 21.41 W 104 28 59.33 1289142.92 3284356.60 4881.00 -70.44	KBL 1930 Pad Sec 19 - Mid line	N 40 7 17.79 W 104 28 41.82 1288791.80 3285720.67 4881.00 8.56
KBL 1930 11H BHL	N 40 6 12.09 W 104 28 59.24 1282128.97 3284444.30 6641.00 6792.68	KBL 1930 11H LP	N 40 7 21.44 W 104 28 59.35 1289145.87 3284354.60 6674.00 -72.95



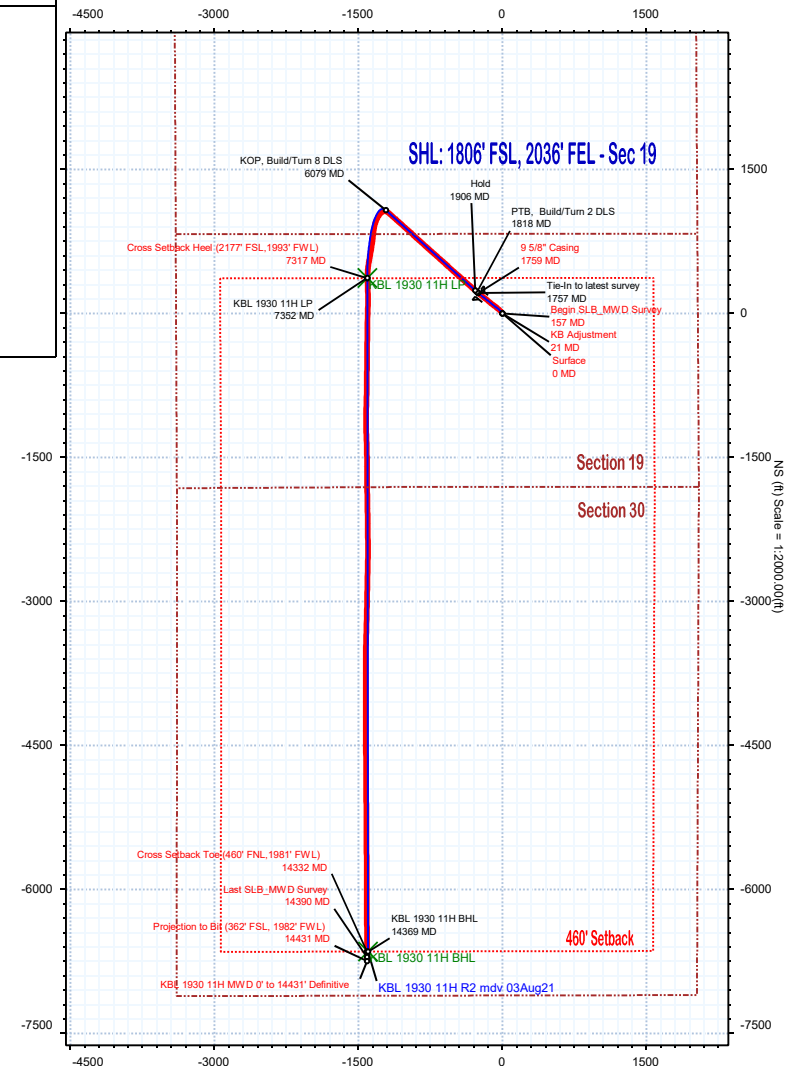
EW (ft) Scale =

True North
Tot Corr (M->T 8.008°)
Mag Dec (8.008°)
Grid Conv (0.660°)

Critical Points								
Critical Point	MD	INCL	AZIM	TVD	VSEC	N(+)/S(-)	E(+)/W(-)	DLS
Surface	0.00	0.00	0.00	0.00	0.00	0.00	0.00	0.00
KB Adjustment	21.00	0.00	0.00	21.00	0.00	0.00	0.00	0.00
Begin SLB_MWD Survey	157.00	0.44	136.94	157.00	0.30	-0.38	0.36	0.32
9 5/8" Casing	1759.00	15.87	309.21	1714.46	-156.64	213.02	-251.73	0.86
Cross Setback Heel (2177' FSL, 1993' FWL)	7316.56	85.50	179.59	6672.49	-70.48	367.59	-1405.00	8.81
Cross Setback Toe (460' FNL, 1981' FWL)	14332.23	90.14	179.83	6646.01	6794.95	-6647.00	-1410.26	0.13
Last SLB_MWD Survey	14390.00	90.22	179.82	6645.83	6851.45	-6704.77	-1410.09	0.13
Projection to Bit (362' FSL, 1982' FWL)	14431.00	90.22	179.82	6645.68	6891.54	-6745.77	-1409.96	0.01



Vertical Section (ft) Azim = 191.88° Scale = 1:2000.00(ft) Origin = 0N/-S, 0E/-W



KBL 1930 11H MWD 0' to 14431' Definitive Survey Geodetic Report

(Def Survey)

Report Date: August 12, 2021 - 03:04 PM
Client: Verdad Resources LLC
Field: CO, Weld County (NAD 83 NZ) - 2019
Structure / Slot: Verdad Resources 19-02N-63W (KBL 1930 Pad) / KBL 1930 11H
Well: KBL 1930 11H
Borehole: Original Hole
UWI / API#: Unknown / 05-123-50883
Survey Name: KBL 1930 11H MWD 0' to 14431' Definitive
Survey Date: August 03, 2021
Tort / AHD / DDI / ERD Ratio: 203.931 ° / 9493.067 ft / 6.622 / 1.422
Coordinate Reference System: NAD83 Colorado State Plane, Northern Zone, US Feet
Location Lat / Long: N 40° 7' 17.78160", W 104° 28' 41.24280"
Location Grid N/E Y/X: N 1288791.594 ftUS, E 3285765.699 ftUS
CRS Grid Convergence Angle: 0.6603 °
Grid Scale Factor: 0.99995937
Version / Patch: 2.10.824.0

Survey / DLS Computation: Minimum Curvature / Lubinski
Vertical Section Azimuth: 191.880 ° (True North)
Vertical Section Origin: 0.000 ft, 0.000 ft
TVD Reference Datum: KB 21ft
TVD Reference Elevation: 4881.000 ft above MSL
Seabed / Ground Elevation: 4860.000 ft above MSL
Magnetic Declination: 8.008 °
Total Gravity Field Strength: 999.0189mgn (9.80665 Based)
Gravity Model: GARM
Total Magnetic Field Strength: 51853.444 nT
Magnetic Dip Angle: 66.472 °
Declination Date: August 03, 2021
Magnetic Declination Model: HDGM 2021
North Reference: True North
Grid Convergence Used: 0.0000 °
Total Corr Mag North→True North: 8.0081 °
Local Coord Referenced To: Well Head

Comments	MD (ft)	Incl (°)	Azim True (°)	TVD (ft)	VSEC (ft)	NS (ft)	EW (ft)	DLS (°/100ft)	Northing (ftUS)	Easting (ftUS)	Latitude (°)	Longitude (°)
Surface	0.00	0.00	0.00	0.00	0.00	0.00	0.00	N/A	1288791.59	3285765.70	40.121606	-104.478123
KB Adjustment	21.00	0.00	0.00	21.00	0.00	0.00	0.00	0.00	1288791.59	3285765.70	40.121606	-104.478123
Begin												
SLB_MWD	157.00	0.44	136.94	157.00	0.30	-0.38	0.36	0.32	1288791.22	3285766.06	40.121605	-104.478122
Survey												
	217.00	0.19	169.33	217.00	0.52	-0.65	0.53	0.50	1288790.95	3285766.24	40.121604	-104.478121
	299.00	1.13	313.99	298.99	0.22	-0.22	-0.02	1.57	1288791.37	3285765.68	40.121605	-104.478123
	388.00	2.44	321.35	387.95	-1.45	1.87	-1.84	1.49	1288793.44	3285763.84	40.121611	-104.478130
	478.00	4.46	327.19	477.78	-5.16	6.31	-4.93	2.28	1288797.84	3285760.70	40.121623	-104.478141
	568.00	6.83	326.76	567.34	-11.42	13.73	-9.76	2.63	1288805.21	3285755.78	40.121644	-104.478158
	658.00	9.21	320.52	656.45	-19.70	23.76	-17.28	2.81	1288815.15	3285748.15	40.121671	-104.478185
	748.00	11.48	311.95	744.99	-28.68	35.31	-28.52	3.04	1288826.57	3285736.78	40.121703	-104.478225
	838.00	13.44	309.56	832.87	-38.03	47.96	-43.24	2.25	1288839.05	3285721.91	40.121738	-104.478278
	928.00	14.82	307.96	920.14	-47.95	61.70	-60.38	1.59	1288852.59	3285704.61	40.121775	-104.478339
	1018.00	17.18	306.65	1006.65	-58.58	76.72	-80.13	2.65	1288867.38	3285684.70	40.121817	-104.478410
	1108.00	17.96	307.42	1092.45	-70.13	93.09	-101.81	0.90	1288883.50	3285662.83	40.121862	-104.478487
	1198.00	17.87	310.04	1178.09	-82.63	110.40	-123.40	0.90	1288900.56	3285641.04	40.121909	-104.478564
	1288.00	16.91	309.19	1263.97	-95.15	127.56	-144.12	1.10	1288917.47	3285620.12	40.121956	-104.478638
	1378.00	17.38	309.18	1349.97	-107.32	144.32	-164.69	0.52	1288934.00	3285599.37	40.122002	-104.478712
	1468.00	17.72	308.04	1435.78	-119.53	161.25	-185.89	0.54	1288950.68	3285577.97	40.122049	-104.478788
	1558.00	17.08	307.20	1521.67	-131.22	177.68	-207.21	0.76	1288966.87	3285556.47	40.122094	-104.478864
	1648.00	16.43	308.35	1607.84	-142.55	193.57	-227.72	0.81	1288982.52	3285535.78	40.122137	-104.478937
	1738.00	16.01	309.53	1694.26	-153.98	209.37	-247.27	0.59	1288998.09	3285516.04	40.122181	-104.479007
	1757.00	15.86	309.17	1712.53	-156.38	212.67	-251.30	0.95	1289001.35	3285511.97	40.122190	-104.479022
9 5/8" Casing	1759.00	15.87	309.21	1714.46	-156.64	213.02	-251.73	0.86	1289001.69	3285511.51	40.122191	-104.479023
	1877.00	16.66	311.48	1827.73	-172.40	234.43	-276.91	0.86	1289022.80	3285486.12	40.122250	-104.479113
	1966.00	17.25	311.25	1912.86	-185.17	251.58	-296.39	0.67	1289039.73	3285466.44	40.122297	-104.479183
	2055.00	17.41	311.59	1997.82	-198.25	269.12	-316.27	0.21	1289057.04	3285446.36	40.122345	-104.479254
	2145.00	17.43	311.57	2083.69	-211.60	287.00	-336.43	0.02	1289074.69	3285426.00	40.122394	-104.479326
	2234.00	17.04	310.49	2168.70	-224.44	304.31	-356.31	0.57	1289091.77	3285405.92	40.122441	-104.479397
	2324.00	17.14	311.85	2254.73	-237.38	321.72	-376.22	0.46	1289108.94	3285385.82	40.122489	-104.479468
	2413.00	17.36	311.44	2339.72	-250.48	339.25	-395.94	0.28	1289126.24	3285365.90	40.122537	-104.479539
	2503.00	17.49	312.61	2425.59	-264.01	357.29	-415.96	0.42	1289144.06	3285345.67	40.122587	-104.479610
	2592.00	17.10	311.23	2510.57	-277.26	374.97	-435.64	0.64	1289161.51	3285325.79	40.122635	-104.479681
	2682.00	17.35	311.48	2596.53	-290.37	392.58	-455.64	0.29	1289178.88	3285305.58	40.122684	-104.479752
	2771.00	17.24	311.89	2681.51	-303.52	410.18	-475.40	0.18	1289196.25	3285285.62	40.122732	-104.479823
	2860.00	17.32	312.40	2766.49	-316.85	427.92	-495.01	0.19	1289213.76	3285265.82	40.122781	-104.479893
	2950.00	17.30	312.70	2852.42	-330.51	446.03	-514.74	0.10	1289231.64	3285245.88	40.122830	-104.479964
	3039.00	17.19	311.61	2937.41	-343.81	463.73	-534.30	0.39	1289249.12	3285226.11	40.122879	-104.480034
	3128.00	17.32	311.01	3022.41	-356.78	481.16	-554.13	0.25	1289266.31	3285206.09	40.122927	-104.480104
	3218.00	17.22	313.24	3108.35	-370.23	499.08	-573.94	0.74	1289284.00	3285186.07	40.122976	-104.480175
	3307.00	16.90	312.68	3193.44	-383.71	516.87	-593.05	0.41	1289301.58	3285166.76	40.123025	-104.480244
	3397.00	16.29	311.74	3279.69	-396.70	534.14	-612.08	0.74	1289318.63	3285147.53	40.123072	-104.480312
	3486.00	17.24	311.48	3364.90	-409.43	551.19	-631.28	1.07	1289335.45	3285128.14	40.123119	-104.480380
	3576.00	16.45	311.30	3451.04	-422.28	568.44	-650.85	0.88	1289352.47	3285108.37	40.123166	-104.480450
	3665.00	17.05	310.17	3536.26	-434.66	585.18	-670.29	0.77	1289368.98	3285088.74	40.123212	-104.480520
	3755.00	17.09	312.13	3622.30	-447.57	602.56	-690.18	0.64	1289386.14	3285068.65	40.123260	-104.480591
	3844.00	17.01	311.72	3707.38	-460.64	620.00	-709.60	0.16	1289403.35	3285049.04	40.123308	-104.480660
	3934.00	17.37	311.97	3793.36	-473.93	637.74	-729.41	0.41	1289420.86	3285029.02	40.123357	-104.480731
	4024.00	17.40	311.65	3879.25	-487.34	655.67	-749.46	0.11	1289438.56	3285008.77	40.123406	-104.480803
	4113.00	17.30	312.29	3964.20	-500.65	673.43	-769.19	0.24	1289456.08	3284988.83	40.123455	-104.480873
	4202.00	17.44	311.96	4049.14	-514.04	691.25	-788.90	0.19	1289473.68	3284968.92	40.123503	-104.480944
	4292.00	17.38	312.35	4135.02	-527.61	709.32	-808.87	0.15	1289491.52	3284948.75	40.123553	-104.481015
	4381.00	17.47	312.85	4219.93	-541.23	727.36	-828.48	0.20	1289509.33	3284928.92	40.123603	-104.481085
	4471.00	17.05	311.84	4305.88	-554.77	745.35	-848.22	0.57	1289527.09	3284908.98	40.123652	-104.481156
	4560.00	17.33	312.56	4390.90	-568.05	763.02	-867.71	0.39	1289544.54	3284889.29	40.123700	-104.481226
	4650.00	17.62	311.82	4476.75	-581.69	781.17	-887.73	0.41	1289562.45	3284869.06	40.123750	-104.481297
	4739.00	17.08	311.23	4561.70	-594.82	798.77	-907.60	0.63	1289579.82	3284848.99	40.123799	-104.481368
	4829.00	17.09	312.41	4647.73	-608.01	816.40	-927.30	0.39	1289597.22	3284829.09	40.123847	-104.481439
	4918.00	17.50	311.96	4732.71	-621.36	834.16	-946.91	0.49	1289614.75	3284809.28	40.123896	-104.481509
	5008.00	17.30	312.12	4818.59	-634.88	852.18	-966.89	0.23	1289632.54	3284789.10	40.123945	-104.481580
	5098.00	17.37	311.90	4904.50	-648.34	870.13	-986.81	0.11	1289650.26	3284768.97	40.123994	-104.481652
	5187.00	17.34	311.73	4989.45	-661.59	887.83	-1006.60	0.07	1289667.73	3284748.98	40.124043	-104.481722
	5276.00	17.28	314.60	5074.42	-675.34	905.94	-1025.91	0.96	1289685.62	3284729.46	40.124093	-104.481791
	5366.00	17.23	311.85	5160.37	-689.23	924.22	-1045.36	0.91	1289703.67	3284709.80	40.124143	-104.481861
	5455.00	17.35	311.34	5245.35	-702.34	941.79	-1065.14	0.22	1289721.00	3284689.82	40.124191	-104.481932
	5545.00	16.88	310.44	5331.36	-715.19	959.13	-1085.17	0.60	1289738.11	3284669.60	40.124239	-104.482003
	5634.00	16.93	312.57	5416.52	-727.98	976.27	-1104.54	0.70	1289755.03	3284650.03	40.124286	-104.482073
	5723.00	16.59	310.21	5501.74	-740.62	993.24	-1123.79	0.86	1289771.78	3284630.59	40.124332	-104.482141
	5813.00	17.51	311.34	5587.78	-753.37	1010.48	-1143.77	1.09	1289788.78	3284610.41	40.124380	-104.482213
	5902.00	17.11	311.60	5672.75	-766.45	1028.02	-1163.61	0.46	1289806.09	3284590.37	40.124428	-104.482284
	5992.00	17.08	311.63	5758.77	-779.57	1045.58	-1183.39	0.04	1289823.43	3284570.39	40.124476	-104.482355
	6081.00	15.85	305.04	5844.13	-790.84	1061.25	-1203.12	2.50	1289838.86	3284550.48	40.124519	-

Comments	MD (ft)	Incl (°)	Azim True (°)	TVD (ft)	VSEC (ft)	NS (ft)	EW (ft)	DLS (°/100ft)	Northing (ftUS)	Easting (ftUS)	Latitude (°)	Longitude (°)
	6707.00	41.61	191.47	6418.06	-604.66	898.58	-1334.28	11.37	1289674.70	3284421.21	40.124073	-104.482894
	6797.00	47.99	186.21	6481.91	-541.41	835.97	-1343.85	8.19	1289611.99	3284412.36	40.123901	-104.482928
	6886.00	55.07	187.04	6537.25	-472.07	766.80	-1351.91	7.99	1289542.73	3284405.10	40.123711	-104.482957
	6976.00	62.38	188.92	6583.94	-395.38	690.69	-1362.63	8.32	1289466.50	3284395.26	40.123502	-104.482995
	7065.00	69.20	190.42	6620.42	-314.32	610.72	-1376.28	7.82	1289386.39	3284382.53	40.123282	-104.483044
	7154.00	76.32	190.00	6646.78	-229.41	527.12	-1391.33	8.01	1289302.63	3284368.44	40.123053	-104.483098
	7244.00	81.38	184.51	6664.19	-141.46	439.59	-1402.44	8.21	1289214.97	3284358.35	40.122813	-104.483138
Cross Setback Heel (2177' FSL, 1993' FWL)	7316.56	85.50	179.59	6672.49	-70.48	367.59	-1405.00	8.81	1289142.95	3284356.62	40.122615	-104.483147
	7333.00	86.44	178.48	6673.64	-54.49	351.19	-1404.72	8.81	1289126.56	3284357.08	40.122570	-104.483146
	7423.00	89.41	178.20	6676.90	32.94	261.30	-1402.12	3.31	1289036.71	3284360.72	40.122323	-104.483137
	7512.00	90.32	178.83	6677.11	119.53	172.33	-1399.81	1.24	1288947.77	3284364.05	40.122079	-104.483128
	7602.00	90.34	182.24	6676.59	207.76	82.35	-1400.65	3.79	1288857.79	3284364.25	40.121832	-104.483131
	7691.00	90.13	181.05	6676.23	295.34	-6.61	-1403.20	1.35	1288768.81	3284362.72	40.121588	-104.483140
	7780.00	90.27	181.31	6675.92	382.79	-95.59	-1405.04	0.33	1288679.82	3284361.92	40.121343	-104.483147
	7870.00	90.52	180.53	6675.30	471.15	-185.58	-1406.48	0.92	1288589.83	3284361.51	40.121096	-104.483152
	7960.00	90.01	180.48	6674.88	559.38	-275.58	-1407.28	0.57	1288499.83	3284361.75	40.120849	-104.483155
	8049.00	90.55	180.06	6674.45	646.56	-364.57	-1407.70	0.77	1288410.84	3284362.35	40.120605	-104.483156
	8139.00	90.66	179.65	6673.49	734.58	-454.57	-1407.48	0.47	1288320.86	3284363.62	40.120358	-104.483156
	8228.00	90.90	182.52	6672.28	821.99	-543.53	-1409.16	3.24	1288231.88	3284362.95	40.120114	-104.483162
	8318.00	90.44	180.30	6671.23	910.48	-633.49	-1411.38	2.52	1288141.91	3284361.77	40.119867	-104.483170
	8407.00	90.31	180.82	6670.65	997.74	-722.49	-1412.25	0.59	1288052.91	3284361.93	40.119623	-104.483173
	8496.00	90.46	180.58	6670.05	1085.05	-811.48	-1413.33	0.31	1287963.92	3284361.87	40.119378	-104.483176
	8586.00	90.63	181.59	6669.20	1173.45	-901.46	-1415.03	1.14	1287873.93	3284361.21	40.119131	-104.483183
	8676.00	90.26	181.69	6668.50	1262.01	-991.42	-1417.60	0.43	1287783.95	3284359.68	40.118884	-104.483192
	8765.00	90.52	181.08	6667.90	1349.52	-1080.39	-1419.75	0.74	1287694.96	3284358.56	40.118640	-104.483199
	8855.00	90.85	178.77	6666.83	1437.56	-1170.38	-1419.63	2.59	1287604.99	3284359.71	40.118393	-104.483199
	8945.00	90.41	177.29	6665.83	1524.93	-1260.32	-1416.53	1.71	1287515.09	3284363.84	40.118146	-104.483188
	9034.00	90.41	178.51	6665.19	1611.29	-1349.25	-1413.28	1.37	1287426.20	3284368.13	40.117902	-104.483176
	9123.00	90.45	179.04	6664.52	1697.97	-1438.23	-1411.38	0.59	1287337.26	3284371.05	40.117658	-104.483169
	9213.00	89.93	178.70	6664.22	1785.66	-1528.21	-1409.61	0.68	1287247.31	3284373.86	40.117411	-104.483163
	9302.00	90.34	180.42	6664.00	1872.61	-1617.20	-1408.93	1.98	1287158.33	3284375.56	40.117167	-104.483161
	9392.00	90.05	180.34	6663.69	1960.80	-1707.20	-1409.53	0.33	1287068.34	3284375.99	40.116920	-104.483163
	9481.00	90.39	178.72	6663.35	2047.74	-1796.20	-1408.81	1.86	1286979.36	3284377.74	40.116675	-104.483160
	9571.00	90.11	179.02	6662.96	2135.43	-1886.18	-1407.03	0.45	1286889.41	3284380.55	40.116428	-104.483154
	9661.00	90.42	179.40	6662.55	2223.24	-1976.17	-1405.79	0.54	1286799.44	3284382.83	40.116181	-104.483149
	9750.00	90.21	178.57	6662.06	2309.99	-2065.15	-1404.21	0.96	1286710.49	3284385.44	40.115937	-104.483144
	9840.00	89.94	179.94	6661.95	2397.81	-2155.14	-1403.04	1.55	1286620.52	3284387.64	40.115690	-104.483139
	9930.00	90.18	179.24	6661.85	2485.75	-2245.14	-1402.39	0.83	1286530.54	3284389.33	40.115443	-104.483137
	10019.00	90.32	178.76	6661.46	2572.51	-2334.12	-1400.83	0.56	1286441.58	3284391.91	40.115199	-104.483131
	10113.00	90.16	179.94	6661.07	2664.27	-2428.11	-1399.76	1.27	1286347.61	3284394.07	40.114941	-104.483128
	10202.00	90.38	180.69	6660.65	2751.46	-2517.11	-1400.25	0.88	1286258.62	3284394.61	40.114696	-104.483129
	10292.00	90.29	181.34	6660.13	2839.84	-2607.10	-1401.85	0.73	1286168.63	3284394.05	40.114449	-104.483135
	10381.00	90.13	181.10	6659.80	2927.30	-2696.07	-1403.74	0.33	1286079.64	3284393.18	40.114205	-104.483142
	10471.00	90.27	181.31	6659.49	3015.75	-2786.05	-1405.63	0.28	1285989.65	3284392.33	40.113958	-104.483149
	10560.00	90.10	180.71	6659.20	3103.15	-2875.04	-1407.19	0.70	1285900.65	3284391.79	40.113714	-104.483154
	10650.00	90.38	180.95	6658.82	3191.48	-2965.03	-1408.49	0.41	1285810.66	3284391.53	40.113467	-104.483159
	10739.00	90.37	181.55	6658.24	3278.95	-3054.01	-1410.43	0.67	1285721.67	3284390.61	40.113223	-104.483166
	10829.00	90.36	181.12	6657.67	3367.42	-3143.98	-1412.52	0.47	1285631.68	3284389.56	40.112976	-104.483173
	10918.00	90.39	181.10	6657.09	3454.85	-3232.96	-1414.24	0.04	1285542.69	3284388.86	40.112731	-104.483179
	11008.00	90.45	181.91	6656.42	3543.38	-3322.93	-1416.60	0.90	1285452.71	3284387.54	40.112484	-104.483188
	11097.00	89.94	181.84	6656.12	3631.02	-3411.88	-1419.52	0.58	1285363.73	3284385.65	40.112240	-104.483198
	11187.00	90.03	180.75	6656.15	3719.49	-3501.85	-1421.56	1.22	1285273.74	3284384.65	40.111993	-104.483205
	11276.00	89.94	180.35	6656.17	3806.76	-3590.85	-1422.41	0.46	1285184.75	3284384.82	40.111749	-104.483208
	11366.00	90.16	179.94	6656.09	3894.88	-3680.85	-1422.64	0.52	1285094.75	3284385.63	40.111502	-104.483209
	11455.00	90.13	180.10	6655.86	3981.98	-3769.85	-1422.67	0.19	1285005.76	3284386.62	40.111258	-104.483209
	11545.00	90.24	180.32	6655.57	4070.12	-3859.85	-1423.01	0.27	1284915.77	3284387.33	40.111010	-104.483210
	11634.00	90.24	179.89	6655.19	4157.24	-3948.85	-1423.17	0.48	1284826.78	3284388.19	40.110766	-104.483211
	11724.00	90.14	179.45	6654.89	4245.21	-4038.84	-1422.65	0.50	1284736.80	3284389.75	40.110519	-104.483209
	11813.00	90.28	179.65	6654.57	4332.15	-4127.84	-1421.96	0.27	1284647.82	3284391.46	40.110275	-104.483207
	11903.00	90.26	180.17	6654.14	4420.20	-4217.84	-1421.82	0.58	1284557.83	3284392.64	40.110028	-104.483206
	11992.00	90.10	180.05	6653.86	4507.33	-4306.84	-1422.00	0.23	1284468.84	3284393.49	40.109783	-104.483207
	12081.00	90.12	179.73	6653.69	4594.38	-4395.84	-1421.82	0.37	1284379.85	3284394.68	40.109539	-104.483206
	12171.00	90.17	179.71	6653.46	4682.36	-4485.84	-1421.38	0.06	1284289.87	3284396.17	40.109292	-104.483204
	12260.00	90.27	179.47	6653.12	4769.32	-4574.83	-1420.74	0.29	1284200.89	3284397.83	40.109048	-104.483202
	12350.00	90.12	179.72	6652.81	4857.26	-4664.83	-1420.10	0.33	1284110.91	3284399.50	40.108801	-104.483200
	12439.00	90.11	179.77	6652.64	4944.27	-4753.83	-1419.71	0.05	1284021.92	3284400.93	40.108556	-104.483198
	12529.00	90.37	179.65	6652.27	5032.25	-4843.83	-1419.25	0.32	1283931.94	3284402.42	40.108309	-104.483197
	12618.00	90.36	180.01	6651.71	5119.29	-4932.83	-1418.99	0.40	1283842.96	3284403.71	40.108065	-104.483196
	12708.00	90.25	179.14	6651.23	5207.22	-5022.82	-1418.32	0.97	1283752.98	3284405.41	40.107818	-104.483193
	12797.00	90.16	179.66	6650.91	5294.11	-5111.82	-1417.39	0.59	1283664.00	3284407.37	40.107574	-104.483190
	12887.00	90.08	180.21	6650.71	5382.16	-5201.81	-1417.29	0.61	1283574.02	3284408.50	40.107327	-104.483190
	12976.00	90.41	179.71	6650.32	5469.24	-5290.81	-1417.23	0.67	1283485.03	3284409.59	40.107082	-104.483190
	13066.00	90.09	179.53	6649.93	5557.19	-5380.81	-1416.64	0.41	1283395.05	3284411.22	40.106835	-104.483187
	13155.00	90.28	179.39	6649.64	5644.11	-5469.81	-1415.80	0.27	1283306.07	3284413.08	40.106591	-104.483184
	13245.00	90.03	179.55	6649.40	5732.00	-5559.80	-1414.96	0.34	1283216.09	3284414.96	40.106344	-104.483181
	13334.00	90.23	179.23	6649.20	5818.90	-5648.80	-1414.01	0.43	1283127.12	3284416.94	40.106100	-104.483178
	13424.00	90.17	179.71	6648.89	5906.79	-5738.79	-1413.17	0.55	1283037.14	3284418.81	40.105853	-104.483175
	13513.00	90.03	180									

Comments	MD (ft)	Incl (°)	Azim True (°)	TVD (ft)	VSEC (ft)	NS (ft)	EW (ft)	DLS (°/100ft)	Northing (ftUS)	Easting (ftUS)	Latitude (°)	Longitude (°)
Description	Part	MD From (ft)	MD To (ft)	EOU Freq (ft)	Hole Size (in)	Casing Diameter (in)	Survey Tool Type	Borehole / Survey				
	1	0.000	21.000	1/98.425	13.500	9.625	NAL_MWD_PLUS_0.5_DEG- Depth Only	Original Hole / KBL 1930 11H MWD 0' to 14431' Definitive				
	1	21.000	21.000	Act Stns	13.500	9.625	NAL_MWD_PLUS_0.5_DEG- Depth Only	Original Hole / KBL 1930 11H MWD 0' to 14431' Definitive				
	1	21.000	1757.000	Act Stns	13.500	9.625	NAL_MWD_PLUS_0.5_DEG	Original Hole / KBL 1930 11H MWD 0' to 14431' Definitive				
	1	1757.000	14431.000	Act Stns	8.500	5.500	NAL_MWD_PLUS_0.5_DEG	Original Hole / KBL 1930 11H MWD 0' to 14431' Definitive				