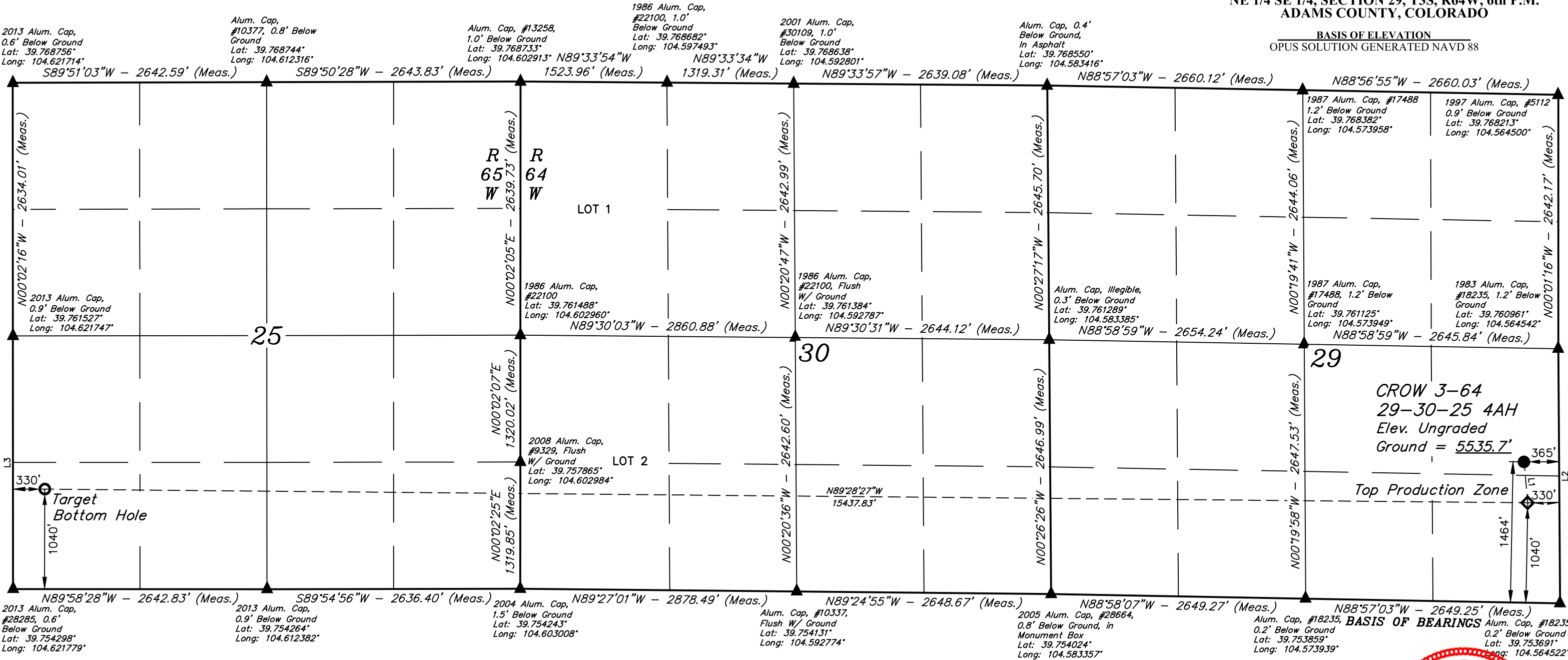


T3S, R64W, 6th P.M.

CRESTONE PEAK RESOURCES OPERATING LLC

CROW 3-64 29-30-25 4AH
NE 1/4 SE 1/4, SECTION 29, T3S, R64W, 6th P.M.
ADAMS COUNTY, COLORADO

BASIS OF ELEVATION
OPUS SOLUTION GENERATED NAVD 88

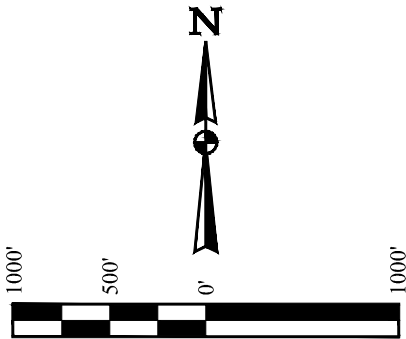


LINE TABLE		
LINE	DIRECTION	LENGTH
L1	S05°07'07"E	426.88'
L2	N00°24'20"W	2649.11'
L3	N00°02'44"W	2634.07'

NOTE:
Distances referenced
on plat to section lines
are perpendicular.

LEGEND:

- = PROPOSED WELLHEAD.
- ◇ = TOP PRODUCTION ZONE.
- ⊕ = TARGET BOTTOM HOLE.
- ▲ = SECTION CORNERS LOCATED. (NAD 83)



PDOP = 1.2

NAD 83 (SURFACE LOCATION)	NAD 83 (TOP PRODUCTION ZONE)	NAD 83 (TARGET BOTTOM HOLE)
LATITUDE = 39°45'27.84" (39.757734°)	LATITUDE = 39°45'23.64" (39.756567°)	LATITUDE = 39°45'25.73" (39.757148°)
LONGITUDE = 104°33'56.99" (104.565831°)	LONGITUDE = 104°33'56.53" (104.565703°)	LONGITUDE = 104°37'14.14" (104.620593°)
NAD 27 (SURFACE LOCATION)	NAD 27 (TOP PRODUCTION ZONE)	NAD 27 (TARGET BOTTOM HOLE)
LATITUDE = 39°45'27.89" (39.757748°)	LATITUDE = 39°45'23.69" (39.756581°)	LATITUDE = 39°45'25.78" (39.757161°)
LONGITUDE = 104°33'55.12" (104.565311°)	LONGITUDE = 104°33'54.66" (104.565183°)	LONGITUDE = 104°37'12.26" (104.620071°)
STATE PLANE NAD 83 (CO. NORTH)	STATE PLANE NAD 83 (CO. NORTH)	STATE PLANE NAD 83 (CO. NORTH)
N: 1155979.93' E: 3262635.55'	N: 1155555.09' E: 3262676.04'	N: 1155608.95' E: 3247242.18'
STATE PLANE NAD 27 (CO. NORTH)	STATE PLANE NAD 27 (CO. NORTH)	STATE PLANE NAD 27 (CO. NORTH)
N: 155983.62' E: 2262788.69'	N: 155558.78' E: 2262829.19'	N: 155612.43' E: 2247395.47'

CERTIFICATION
THIS IS TO CERTIFY THAT THE ABOVE PLAT WAS PREPARED FROM FIELD
NOTES OF ACTUAL SURVEYS MADE BY ME OR UNDER MY SUPERVISION,
AND THAT THE SAME ARE TRUE AND CORRECT TO THE BEST OF MY
KNOWLEDGE AND BELIEF.

REGISTERED LAND SURVEYOR
REGISTRATION NO. 28285
STATE OF COLORADO
28285-03-21



UELS, LLC
Corporate Office * 85 South 200 East
Vernal, UT 84078 * (435) 789-1017

SURVEYED BY	GREG WEIMER	04-20-21	SCALE
DRAWN BY	J.J.	05-03-21	1" = 1000'

WELL LOCATION PLAT