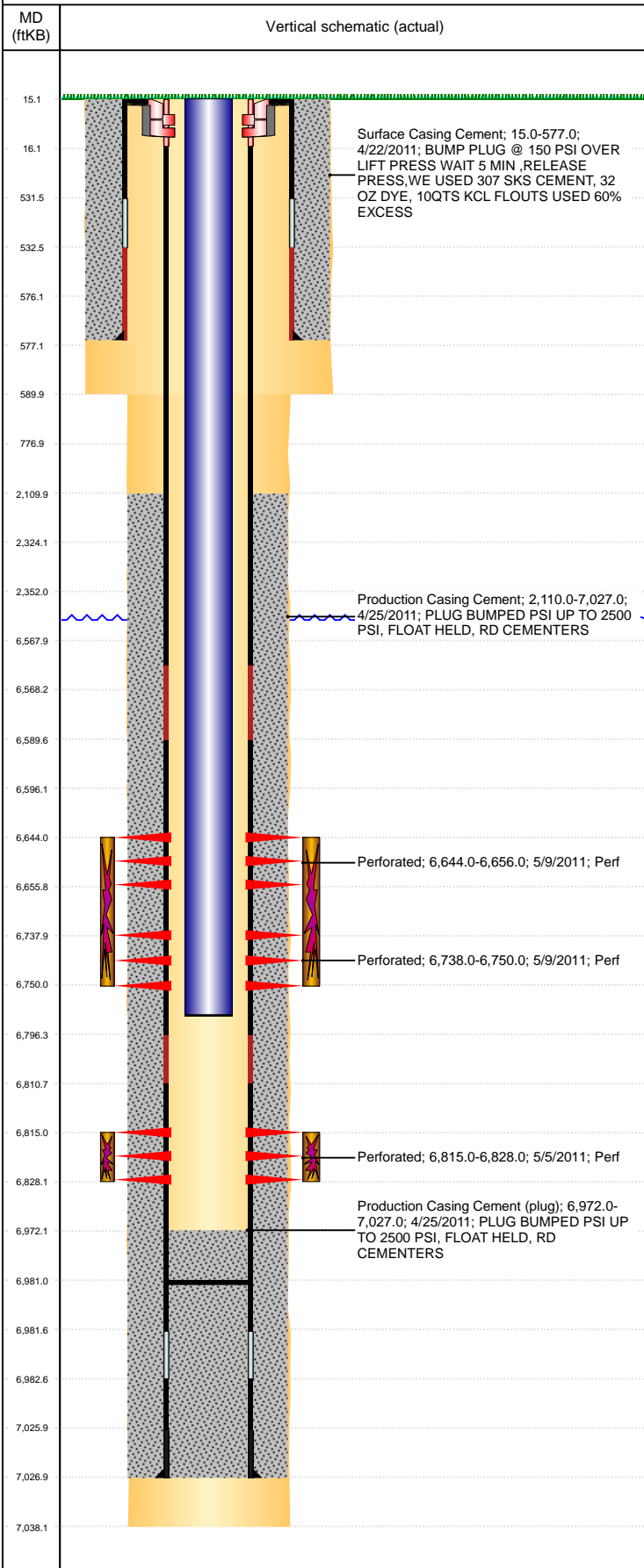


Well Name: MARLEY C01-28D

DEVIATED, ORIGINAL HOLE, 10/5/2021 3:19:21 PM



Well Header										
API 05-123-31508		Business Unit DJ BASIN		District 15		Well Config DEVIATED				
KB - GL / MSL (ft... 15.00		Spud Date 4/21/2011		P & A Date		Well Production Status PR			SoRT No	
Comment										
Surface Location (Congressional)										
Qtr 3 NE	Qtr 4 NW	Section 1	Twnshp 4	Twنش... N	Range 64	Rng E/... W	Actual Latitude (°) 40.34698477		Actual Longitude (°) -104.50090400	
Wellbore Sections										
Section Des			Size (in)		Act Top, MD (ftKB)		Act Btm, MD (ftKB)			
SURFACE			12 1/4		15		590			
PRODUCTION			7 7/8		590		7,038			
Casing Strings										
Csg Des			Run Date	OD (in)	Wt/Len (lb/ft)	Grade	Top, MD (ftKB)	MD (ftKB)		
Surface			4/22/2011	8 5/8	24.00	J-55	14.9	577.0		
Production			4/25/2011	4 1/2	11.60	M-80	15.0	7,027.0		
Cement										
Des					Start Date		Top (ftKB)		Btm (ftKB)	
Surface Casing Cement					4/22/2011		15.0		577.0	
Production Casing Cement					4/25/2011		2,110.0		7,027.0	
Zone Statuses										
Zone Name		Status Date	Status	Fluid Type	Job				Prod Method	
NIOBRARA		7/15/2011	PR		DRILLING/COMPLETION - ORIGINAL, 4/21/2011...					
CODELL		7/15/2011	PR		DRILLING/COMPLETION - ORIGINAL, 4/21/2011...					
Perforation Data										
Linked Zone			Bnch/Stg	Entered Shot Total	Top (ftKB)		Btm (ftKB)		Date	
NIOBRARA, ORIGINAL HOLE			A	24	6,644.00		6,656.00		5/9/2011	
NIOBRARA, ORIGINAL HOLE			B	24	6,738.00		6,750.00		5/9/2011	
CODELL, ORIGINAL HOLE				52	6,815.00		6,828.00		5/5/2011	
Stimulation Intervals										
Zone				Start Date		Top (ftKB)		Btm (ftKB)		
NIOBRARA, ORIGINAL HOLE				5/9/2011		6,644.0		6,750.0		
CODELL, ORIGINAL HOLE				5/9/2011		6,815.0		6,828.0		
Other In Hole										
Run Date		Des			Make	OD (in)	Top (ftKB)	Btm (ftKB)		
Logs										
Date		Type				Top, MD (ftKB)		Btm, MD (ftKB)		
4/25/2011		BOREHOLE VOLUME				578.0		7,014.0		
4/25/2011		SPECTRAL DENSITY/Pe/DSN				578.0		7,034.0		
		NEUTRON/SP/ARRAY								
		COMPENSATED TRUE RESISTIVITY								
5/4/2011		CBL/CCL/GR				1,940.0		6,971.0		
Plug Back Total Depths										
Date		Type		Com				Depth (ftKB)		
5/4/2011		CEMENT PLUG		DEPTH LOGGER ON CBL				6,972.0		
10/18/2011		PLUG REMNANTS						6,981.0		